

T8S, R100W, 6th P.M.

R 100  
W 99

Encana OIL & GAS (USA) INC.

Well location, DHS2C-13 012 8100 (SURFACE LOCATION), located as shown in LOT 4 of Section 12, T8S, R100W, 6th P.M., Garfield County, Colorado.

VERTICAL CONTROL DATUM: NAVD88

[Derived from: N.G.S. O.P.U.S. Solution

NOTE:  
SEE SHEET 6A FOR EXISTING IMPROVEMENTS  
WITHIN 400' OF THE PROPOSED WELL  
DISTURBANCE.

Sheet 1n of 10

N00°10'29"E - 2637.73' (Meas.)

1919 Brass Cap  
0.6' High  
Lat: 39.382339°  
Long: 108.504258°

COCO 012653

C.C. 1919 Brass Cap  
2.3' High  
Lat: 39.382344°  
Long: 108.489022°

A.P. 1919 Brass Cap  
2.2' High  
Lat: 39.381967°  
Long: 108.489092°

LOT 1

NOTE:  
THE PROPERTY LINE IS LOCATED NORTH  
269' FROM THE PROPOSED WELL HEAD.

THE LEASE LINE IS LOCATED NORTH 919'  
FROM THE START OF PRODUCING  
INTERVAL.

LOT 2

S89°36'50"E - 3955.45' (Meas. To True)

S89°36'50"E - 3949.64' (Meas. To C.C.)

1919 Brass Cap  
2.1' High  
Lat: 39.375097°  
Long: 108.504283°

12

C.C. 1919 Brass Cap  
0.6' High  
Lat: 39.375025°  
Long: 108.490319°

LOT 3

DHS2C-13 012 8100

Elev. Ungraded Ground = 6722.5'

Elev. Graded Ground = 6724.7'

NOTE:  
THE PROPOSED BOTTOM HOLE FOR THIS  
WELL IS LOCATED IN LOT 4 OF SECTION 13,  
T8S, R100W, 6th P.M. AT A DISTANCE OF  
650' FSL 470' FEL. IT BEARS S00°13'52"W  
5013.78' FROM THE START OF PRODUCING  
INTERVAL.

LOT 4  
484'  
1050'  
351'  
400'

DHS2C-13 012 8100  
START OF PRODUCING  
INTERVAL

1919 Brass Cap  
0.4' High  
Lat: 39.367819°  
Long: 108.504308°

N89°51'09"W - 3607.30' (Meas. To True)

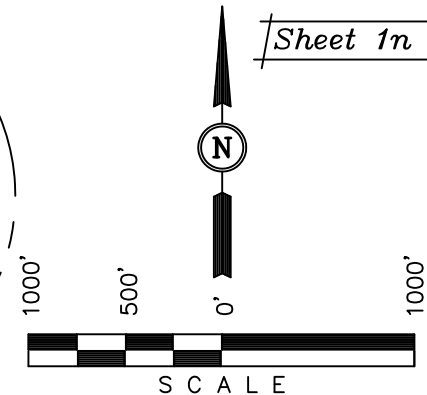
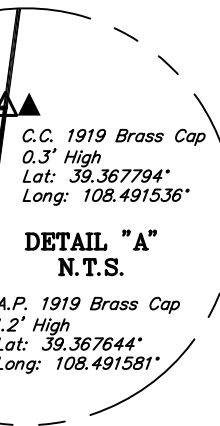
N89°51'09"W - 3612.68' (Meas. To C.C.)

SEE DETAIL "A"  
@ UPPER RIGHT

### LINE TABLE

LINE	DIRECTION	LENGTH
L1	S04°06'20"E	652.61'

PDOP = 1.3



### CERTIFICATE

THIS IS TO CERTIFY THAT THE ABOVE PLAT WAS PREPARED AND LOCATION AS SHOWN WAS STAKED ON THE GROUND FROM FIELD NOTES OF ACTUAL SURVEYS MADE BY ME OR UNDER MY SUPERVISION AND THAT THE SAME ARE TRUE AND CORRECT TO THE BEST OF MY KNOWLEDGE AND BELIEF.

REGISTERED LAND SURVEYOR  
REGISTRATION NO. 17492  
STATE OF COLORADO  
08-01-12

UINTAH ENGINEERING & LAND SURVEYING  
85 SOUTH 200 EAST - VERNAL, UTAH 84078  
(435) 789-1017

### LEGEND:

└─┘ = 90° SYMBOL

● = PROPOSED WELL HEAD.

▲ = SECTION CORNERS LOCATED

△ = SECTION CORNERS  
RE-ESTAB.

(Not Set on Ground)

NAD 83 (START OF PRODUCING INTERVAL)

LATITUDE = 39°22'08.02" (39.368894)

LONGITUDE = 108°29'33.41" (108.492614)

NAD 27 (START OF PRODUCING INTERVAL)

LATITUDE = 39°22'08.10" (39.368917)

LONGITUDE = 108°29'31.08" (108.491967)

NAD 83 (SURFACE LOCATION)

LATITUDE = 39°22'14.45" (39.370681)

LONGITUDE = 108°29'34.01" (108.492781)

NAD 27 (SURFACE LOCATION)

LATITUDE = 39°22'14.53" (39.370703)

LONGITUDE = 108°29'31.68" (108.492133)

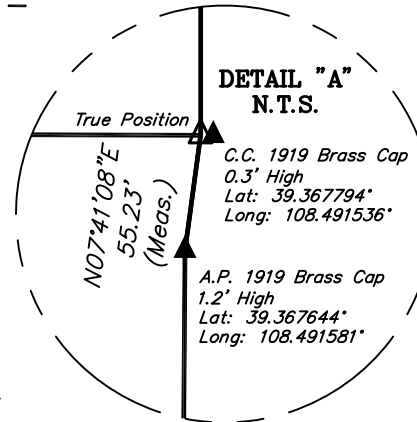
SCALE 1" = 1000'	DATE SURVEYED: 04-14-12	DATE DRAWN: 06-01-12
PARTY B.J. T.M. T.B.	REFERENCES G.L.O. PLAT	
WEATHER COOL	FILE Encana OIL & GAS (USA) INC.	

# Encana OIL & GAS (USA) INC.

Well location, DHS2C-13 012 8100 (TARGET BOTTOM HOLE), located as shown in LOT 4 of Section 13, T8S, R100W, 6th P.M., Garfield County, Colorado.

VERTICAL CONTROL DATUM: NAVD88

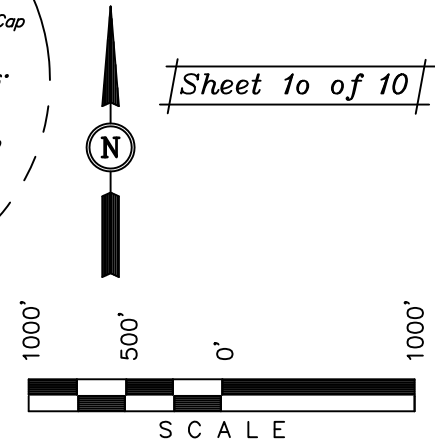
[Derived from: N.G.S. O.P.U.S. Solution]



Sheet 10 of 10

## LEGEND:

- └─┘ = 90° SYMBOL
- = PROPOSED WELL HEAD.
- ▲ = SECTION CORNERS LOCATED.
- △ = SECTION CORNERS RE-ESTAB. (Not Set on Ground)



## CERTIFICATE

THIS IS TO CERTIFY THAT THE ABOVE PLAT WAS PREPARED AND LOCATION AS SHOWN WAS STAKED ON THE GROUND FROM FIELD NOTES OF ACTUAL SURVEYS MADE BY ME OR UNDER MY SUPERVISION AND THAT THE SAME ARE TRUE AND CORRECT TO THE BEST OF MY KNOWLEDGE AND BELIEF.

REGISTERED LAND SURVEYOR  
REGISTRATION NO. 17492  
STATE OF COLORADO  
06-01-12

**UINTAH ENGINEERING & LAND SURVEYING**  
85 SOUTH 200 EAST - VERNAL, UTAH 84078  
(435) 789-1017

SCALE 1" = 1000'	DATE SURVEYED: 04-14-12	DATE DRAWN: 06-01-12
PARTY B.J. T.M. T.B.	REFERENCES G.L.O. PLAT	
WEATHER COOL	FILE Encana OIL & GAS (USA) INC.	

T8S, R100W, 6th P.M. R 100 99

S89°51'09"E - 3607.30' (Meas. To True)  
S89°51'09"E - 3612.68' (Meas. To C.C.)

1919 Brass Cap  
0.4' High  
Lat: 39.367819°  
Long: 108.504308°

GARFIELD COUNTY  
MESA COUNTY

LOT 1

COCO 013423

LOT 2

A.P. 3 TR 46  
1919 Brass Cap  
0.2' High  
Lat: 39.360553°  
Long: 108.491667°

COCO 012750

13

LOT 3

LOT 4

DHS2C-13 012 8100  
TARGET BOTTOM HOLE

0.68' G.L.O.

470'

C.C. 1919 Brass Cap  
0.6' High  
Lat: 39.353342°  
Long: 108.490792°

NOTE:  
THE TARGET BOTTOM HOLE BEARS  
S00°13'52"W 5013.78' FROM THE START OF  
PRODUCING INTERVAL WHICH IS LOCATED IN  
LOT 4 OF SECTION 12, T8S, R100W, 6th  
P.M. AT A DISTANCE OF 400' FSL 351' FEL.

NOTE:  
THE LEASE LINE IS LOCATED NORTH  
1975' FROM THE TARGET BOTTOM HOLE.

1919 Brass Cap  
1.3' High  
Lat: 39.360600°  
Long: 108.504336°

1919 Brass Cap  
1.2' High  
Lat: 39.353372°  
Long: 108.504361°

DETAIL "A"  
N.T.S.

W.C. 1919 Brass Cap  
1.9' High  
Lat: 39.353358°  
Long: 108.495089°

W.C. NE Cor. Sec. 1  
1956 B.L.M. Brass Cap  
2.2' High  
Lat: 39.309900°  
Long: 108.487789°

SE Cor. Sec. 36  
A.P. Re-Established Using  
Grant Boundary Method

True Position  
N89°59'17"W 1798.25' (Meas.)  
N89°24'18"W 1754.05' (Meas.)  
N 1/4 Cor. Sec. 6  
1930 G.L.O. Brass Cap  
1.0' High  
Lat: 39.309847°  
Long: 108.497250°

NAD 83 (TARGET BOTTOM HOLE)  
LATITUDE = 39°21'18.48" (39.355133)  
LONGITUDE = 108°29'33.67" (108.492686)  
NAD 27 (TARGET BOTTOM HOLE)  
LATITUDE = 39°21'18.56" (39.355156)  
LONGITUDE = 108°29'31.34" (108.492039)

SEE DETAIL "A" @ LEFT