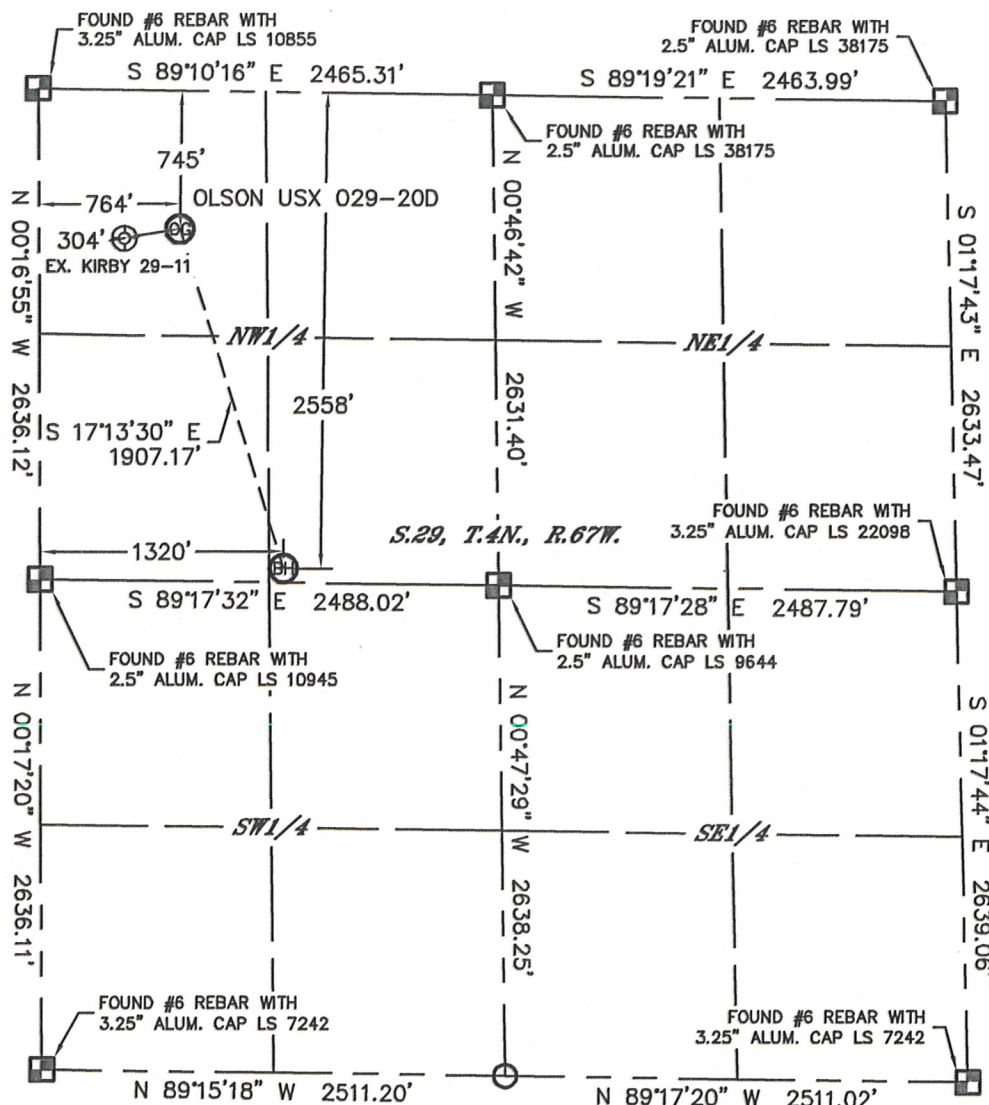


# WELL LOCATION CERTIFICATE

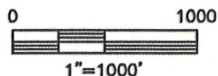
THIS MAP DOES NOT REPRESENT A BOUNDARY SURVEY

SECTION: 29  
TOWNSHIP: 4N  
RANGE: 67W



In accordance with a request from Matt Campbell with Noble Energy Inc. Lat40°, Inc. has determined the surface location of the OLSON USX 029-20D to be 745' from the NORTH line and 764' from the WEST line and the bottom hole to be 2558' from the NORTH line and 1320' from the WEST line as measured at right angles from the section lines of Section 29, Township 4 North, Range 67 West of the Sixth Principal Meridian, County of Weld, State of Colorado.

I hereby state that this Well Location Certificate was prepared by me, or under my direct supervision, that the fieldwork was completed on 1/23/12, for and on behalf of Noble Energy Inc. That this is not a Land Survey Plat or an Improvement Survey Plat, and that it is not to be relied upon for establishment of fence, building, or other future improvement lines.



## NOTE:

- 1) Bearings shown are Grid Bearings of the Colorado State Plane Coordinate System, North Zone, North American Datum 1983/2007. The lineal dimensions as contained herein are based upon the "U.S. Survey Foot."
- 2) Ground elevations are based on an observed GPS elevation (NAVD 1988 DATUM).
- 3) NEAREST EXISTING WELL: KIRBY 29-11, 304'
- 4) IMPROVEMENTS: See LOCATION DRAWING for all visible improvements within 400' of disturbed area.
- 5) SURFACE USE: CROP FIELD
- 6) INSTRUMENT OPERATOR: ADAM KELLY

## NOTE

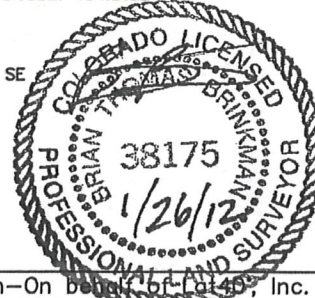
According to Colorado law, you must commence any legal action based upon any defect in this W.L.C. within three years after you discover such defect. In no event, may any action based upon any defect in this survey be commenced more than ten years after the date of the certificate shown hereon. (13-80-105 C.R.S.)

## LEGEND

- = ALIQUOT MONUMENT AS DESCRIBED
- = CALCULATED POSITION

SURFACE LOCATION  
LATITUDE: 40.28938°N  
LONGITUDE: 104.92032°W  
PDOP: 1.4  
ELEV: 4931'  
1/4, 1/4: NW1/4 NW1/4  
NEAREST PROPERTY LINE: ±337' SE

BOTTOM HOLE  
LATITUDE: 40.28437°N  
LONGITUDE: 104.91834°W



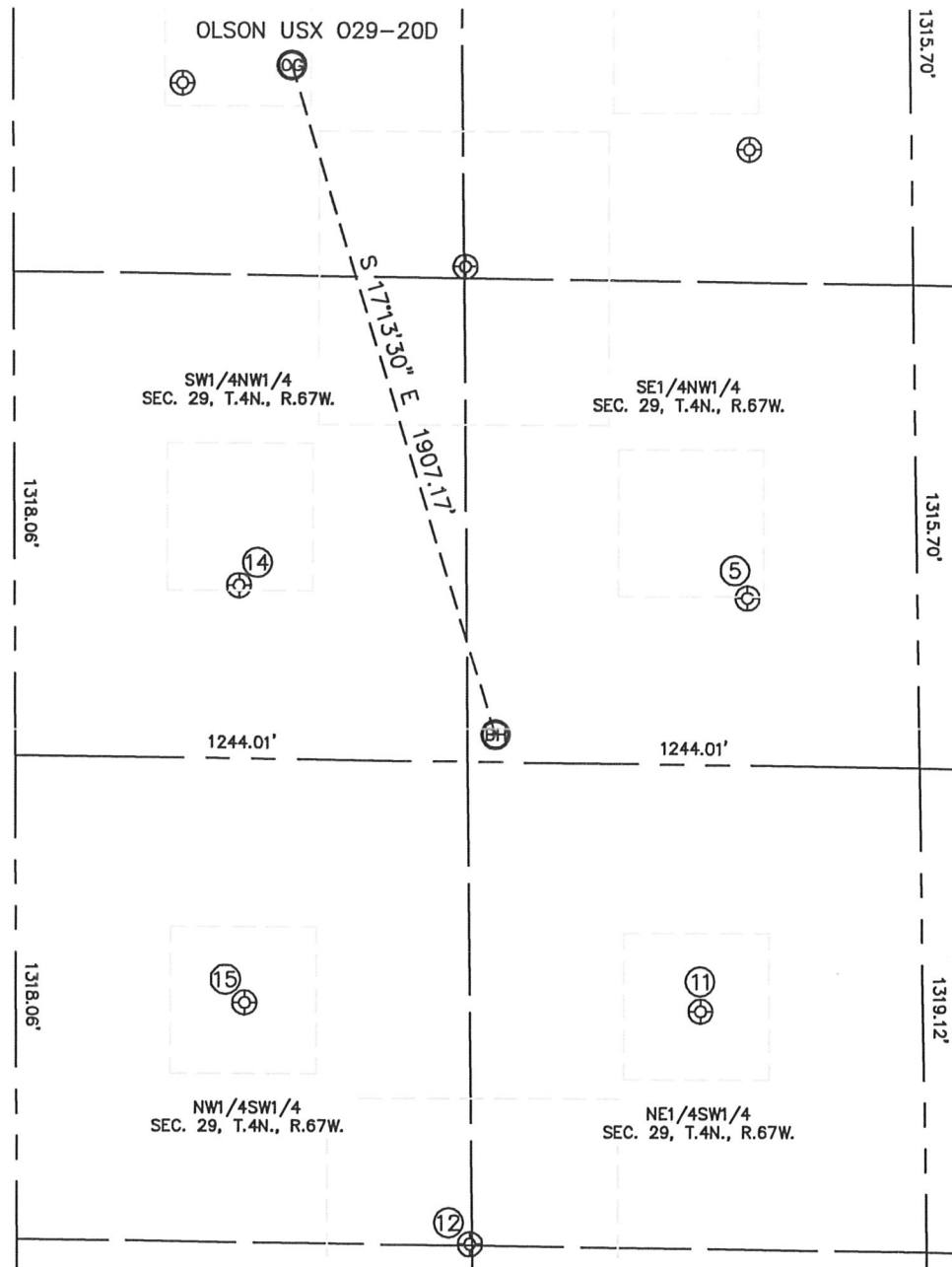
Brian T. Brinkman—On behalf of Lat40°, Inc.  
Colorado Licensed Professional  
Land Surveyor No. 38175

DATE: 1-23-2012  
PROJECT#: 2011071

# SITE SKETCH

OLSON USX 029-20D

SECTION: 29  
TOWNSHIP: 4N  
RANGE: 67W



⑤  
OLSON 29-22  
SE1/4NW1/4  
2175' FNL  
2016' FWL  
LAT-40.28538°N  
LONG-104.91584°W  
PDOP: 2.6  
ELEV: 4958'

⑪  
OLSON 23-29  
NE1/4SW1/4  
1965' FSL  
1881' FWL  
LAT-40.28229°N  
LONG-104.91633°W  
PDOP: 1.6  
ELEV: 4984'

⑫  
OLSON USX 029-25  
NW1/4SW1/4  
1322' FSL  
1244' FWL  
LAT-40.28056°N  
LONG-104.91862°W  
PDOP: 1.5  
ELEV: 4994'

⑭  
OLSON 29-12  
SW1/4NW1/4  
2162' FNL  
616' FWL  
LAT-40.28550°N  
LONG-104.92086°W  
PDOP: 2.1  
ELEV: 4951'

⑮  
OLSON 13-29  
NW1/4SW1/4  
1970' FSL  
627' FWL  
LAT-40.28237°N  
LONG-104.92083°W  
PDOP: 2.0  
ELEV: 4977'

