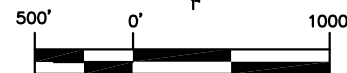
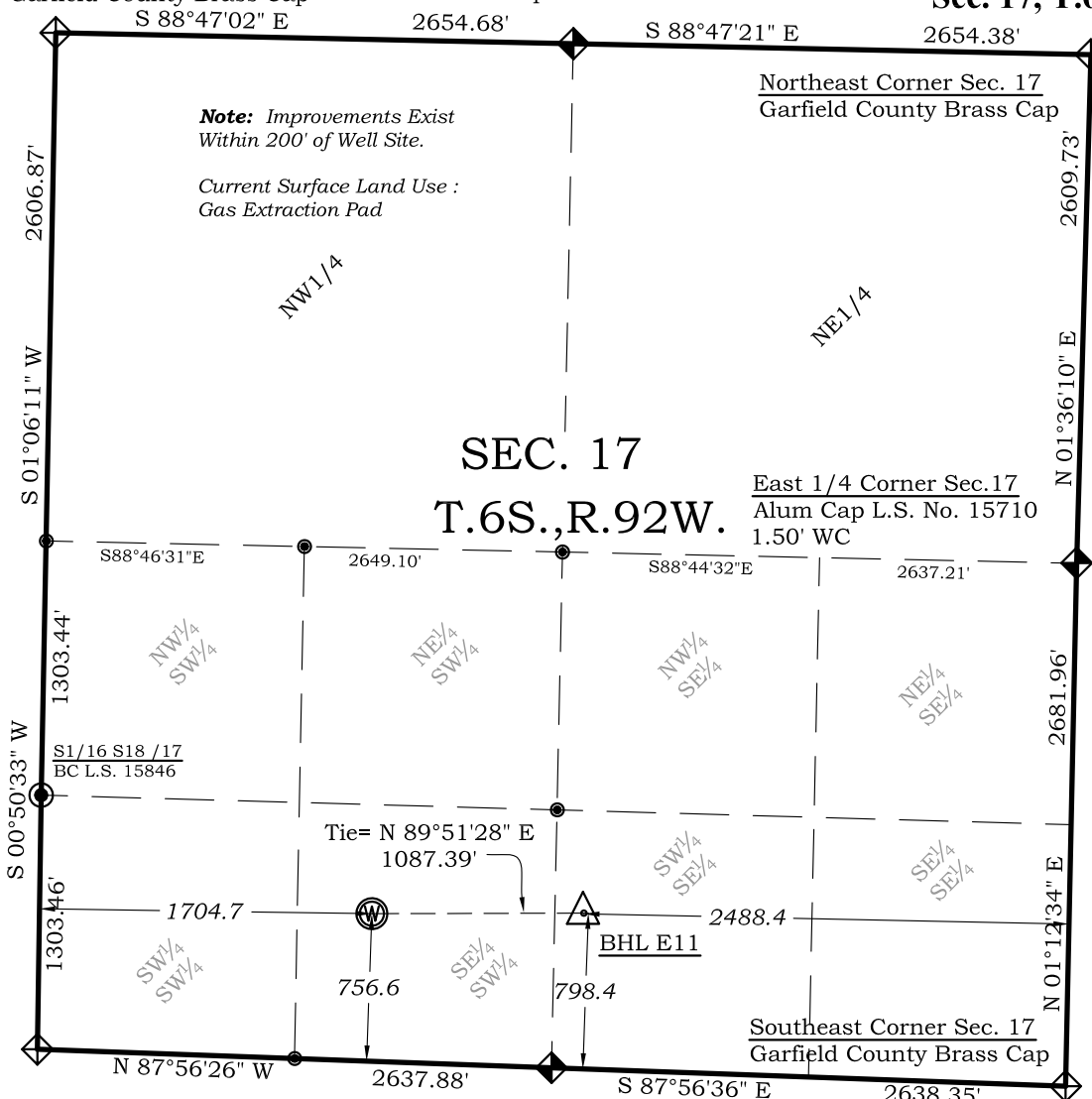


Well Location Plat Gentry E11

Northwest Corner Sec. 17
Garfield County Brass Cap
S 88°47'02" E

North 1/4 Corner Sec.17
Brass Cap L.S. No.15846

Sec. 17, T.6S., R.92W.



Graphic Scale in Feet
1"= 1000'

Legend

- Field Surveyed Section Corner
- Field Surveyed Quarter Corner
- Calculated Section Corner Location
- Field Surveyed 1/6 Corner

Bottom Hole: Gentry E11

798' FSL
2488' FEL
NAD83
Lat: 39.521672328°N
Long: 107.689987610°W

NAD27
Lat: 39.521691801°N
Long: 107.689371600°W

Surface: Gentry E11

757' FSL
1705' FWL
Gnd El= 5665.0
Pad El= 5665.0
NAD83
Lat: 39.521575669°N
Long: 107.693839106°W

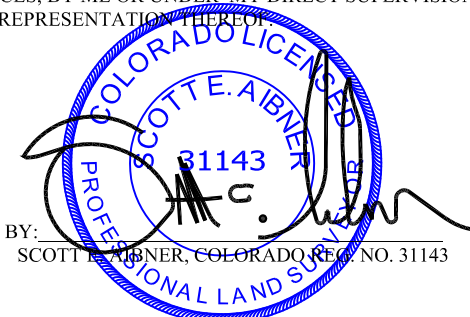
NAD27
Lat: 39.521595145°N
Long: 107.693222957°W
UTM 13 NORTH
NAD 1983
NORTHING
14363896.752
EASTING
880712.156

Prepared For Antero Resources:

Proposed Gentry E11 Well Situate in The SE 1/4 SW 1/4
Section 17, Township 6 South, Range 92 West of the 6 th.
Principal Meridian, County of Garfield, State of Colorado

SURVEYOR'S CERTIFICATE

I, SCOTT E. AIBNER, A REGISTERED LAND SURVEYOR, LICENSED UNDER THE LAWS OF THE STATE OF COLORADO DO HEREBY CERTIFY THAT THE SURVEY SHOWN HEREON WAS PREPARED BY RIVER VALLEY SURVEY, INC., FOR ANTERO RESOURCES, BY ME OR UNDER MY DIRECT SUPERVISION AND THAT THIS PLAT IS A TRUE REPRESENTATION THEREOF.

BY: 
SCOTT E. AIBNER, COLORADO REG. NO. 31143

Notes:

- 1.) LATITUDE AND LONGITUDE COORDINATES ARE DIFFERENTIALLY CORRECTED AND BASED ON PUBLISHED NGS CONTROL STATION "WDP-5".
- 2.) SYSTEM: UTM ZONE: 13 NORTH DATUM: NAD 1983 (CONUS)
- 3.) ELEVATIONS ARE BASED ON NAVD OF 1929.
- 4.) ALL BOTTOM AND TOP HOLE LOCATIONS ARE MEASURED 90 DEGREES FROM SECTION LINE.
- 5.) USGS QUADRANGLE MAP "SILT CO".
- 6.) CURRENT SURFACE LAND USE: GAS PAD
- 7.) PDOP AT THE TIME OF LOCATION OF SURFACE WELL = 1.8



River Valley Survey, Inc.
110 East 3rd. Street, Suite 213
Rifle, Colorado 81650
Ph: 970-379-7846

Project: Gentry E Pad

Proj. No. 06001-13

Field Date: 01-19-07

Scale: 1"= 1000'

Date: 05-18-12

Sheet: 1 of 7

Well Location Plat
Prepared For Antero Resources

Situate In:
SE 1/4 SW 1/4 Section 17, T6S., R. 92 W.
of the 6th P.M., Garfield County,
Colorado

