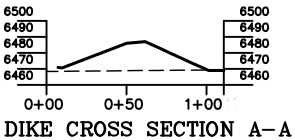
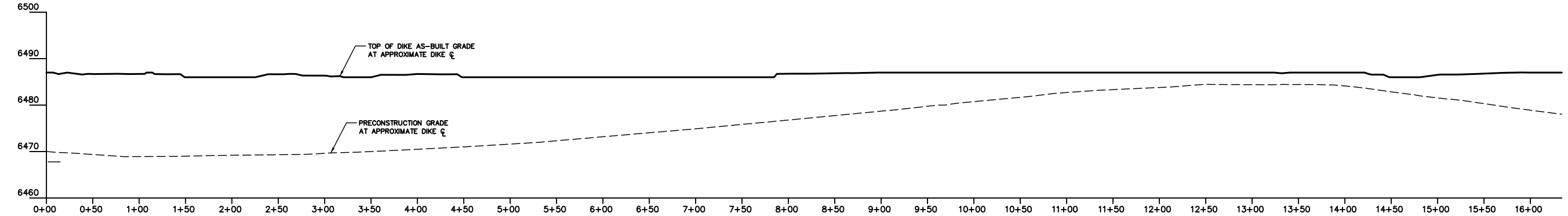


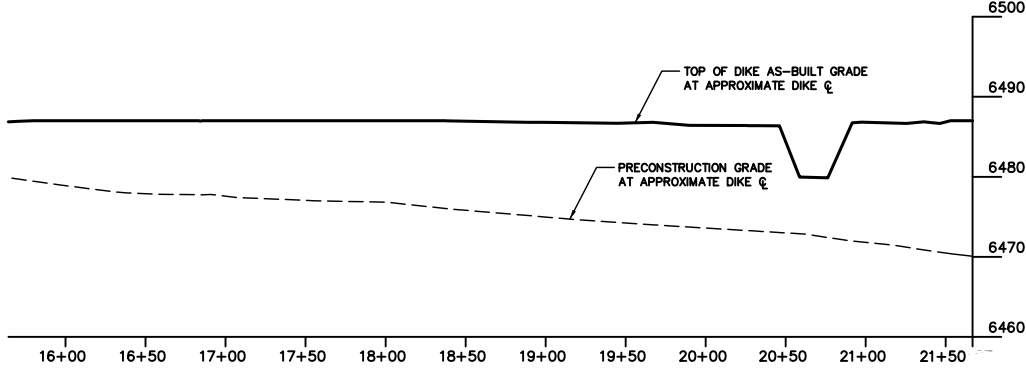
GENERAL NOTES:
- THIS IS AN AS-BUILT OF THE EXISTING HOLDING PONDS LOCATED AS DESCRIBED.
- DASHED CONTOURS REPRESENT PRE CONSTRUCTION GRADE AT 5' INTERVALS.
- SOLID CONTOURS REPRESENT THE AS-BUILT GRADE AT 1' INTERVALS.
- QUICKSILVER RESOURCES CUT BREACHES IN EACH DIKE TO OBTAIN A MAX WATER DEPTH TO OVERFLOW OF 10'
- GLEN MCELROY MEASURED AND SURVEYED THE BREACHES FOR VERIFICATION.



LARGE PIT VOLUME
VOLUME AT TOP OF BREACH = ±364,243 bbl
VOLUME LESS 2' FREEBOARD = ±279,422 bbl



PROFILE AROUND THE DIKE (APPROXIMATE CENTERLINE OF DIKE)



PROFILE AROUND THE DIKE (CONTINUED)

WATER DEPTH CALCULATION

THE SURVEYOR MEASURED FROM THE TOP EDGE OF THE PIT TO THE ICE ALONG THE SLOPE OF THE INSIDE DIKE. HE ALSO MEASURED THE SLOPE OF THE INSIDE DIKE WITH AN INCLINOMETER. ONE OF THOSE MEASUREMENTS WAS: SD=31' GRADIENT=45% THE OTHER DIMENSIONS WERE CALCULATED.

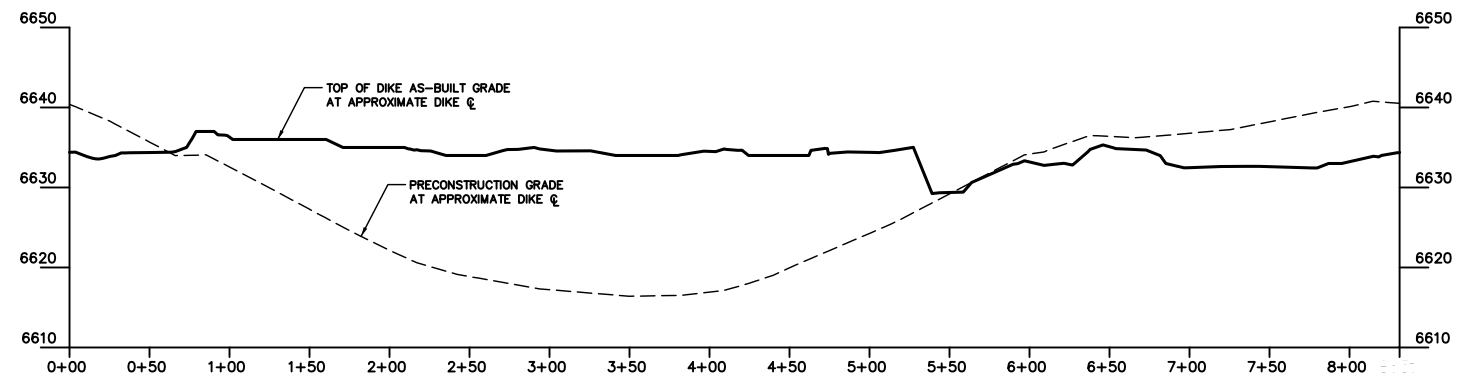
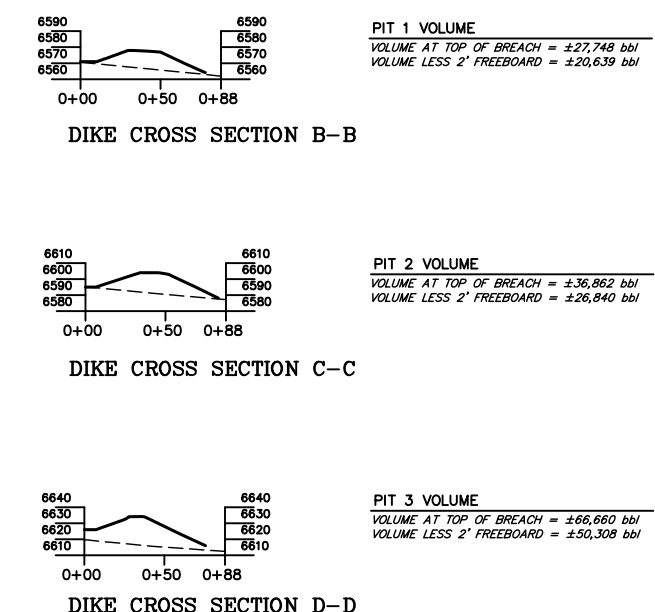
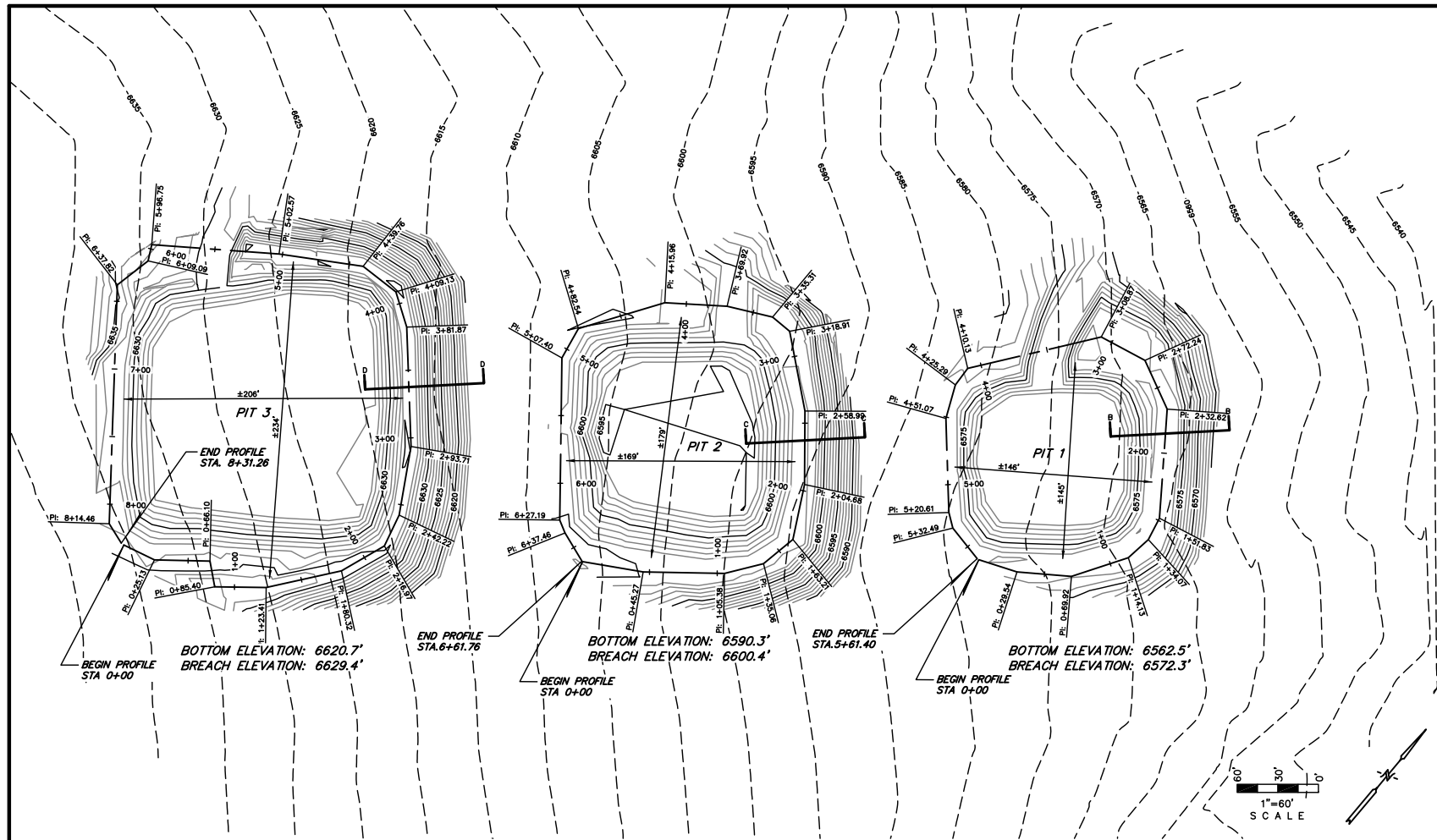
ENGINEER
THIS AS-BUILT WAS PREPARED UNDER MY SUPERVISION
AND IS TRUE TO THE BEST OF MY KNOWLEDGE



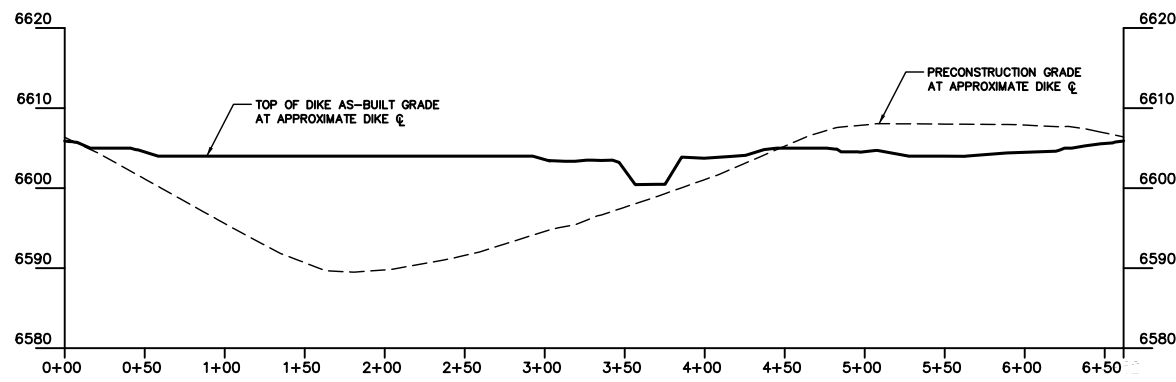
UES
- SINCE 1984 -
UNTAEH ENGINEERING
& LAND SURVEYING
85 SOUTH 200 EAST
VERNAL, UTAH 84078
PHONE: (435) 788-1017
ues@uesinc.com

QUICKSILVER RESOURCES, INC.
ZENON WATER PIT AS-BUILT DRAWINGS
LOCATED IN
SECTION 12, T7N, R93W, 6th P.M.
MOFFAT COUNTY, COLORADO

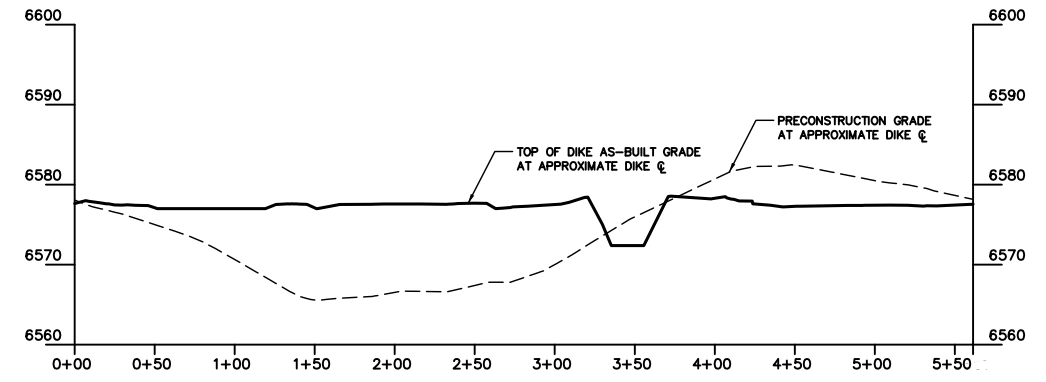
DATE:	2-22-10
REVISED:	3-5-10 (ADDED ICE LINE & VOLUMES)
1-23-12	(ADDED BREACHES & PIT BOTTOM ELEVATIONS)
6-13-12	(ADDED BREACHES TO PLAN & PROFILE VIEWS)
PROJECT NO:	210-1225
SURVEYED:	BH
DRAWN BY:	HNM
ELECTRONIC FILE:	PITS.DWG
FILE:	2 3 2 0 2



PIT 3 PROFILE AROUND THE DIKE (APPROXIMATE CENTERLINE OF DIKE)



PIT 2 PROFILE AROUND THE DIKE (APPROXIMATE CENTERLINE OF DIKE)



PIT 1 PROFILE AROUND THE DIKE (APPROXIMATE CENTERLINE OF DIKE)