

The Road to Excellence Starts with Safety

Sold To #: 300721	Ship To #: 2880074	Quote #:	Sales Order #: 8490160
Customer: WILLIAMS PRODUCTION RMT INC - EBUS	Customer Rep: Wilson, W.C.		
Well Name: NR	Well #: 512-3	API/UWI #: 05-045-20524	
Field: Rulison	City (SAP): RIFLE	County/Parish: Garfield	State: Colorado
Lat: N 39.553 deg. OR N 39 deg. 33 min. 10.044 secs.	Long: W 107.877 deg. OR W -108 deg. 7 min. 21.536 secs.		
Contractor: H&P 280	Rig/Platform Name/Num: H&P 280		
Job Purpose: Cement Surface Casing			
Well Type: Development Well	Job Type: Cement Surface Casing		
Sales Person: KOHL, KYLE	Srv Supervisor: KUKUS, CRAIG	MBU ID Emp #: 369124	

Job Personnel

HES Emp Name	Exp Hrs	Emp #	HES Emp Name	Exp Hrs	Emp #	HES Emp Name	Exp Hrs	Emp #
ANDERSON, ADAM S	6	456683	KUKUS, CRAIG A	6	369124	LYNGSTAD, FREDRICK D	6	403742
WALPOLE, DARREN Livingston	6	485294						

Equipment

HES Unit #	Distance-1 way	HES Unit #	Distance-1 way	HES Unit #	Distance-1 way	HES Unit #	Distance-1 way
10744648C	60 mile	10857016	60 mile	10867322	60 mile	10897891	60 mile
10938658	60 mile	10998508	60 mile	10998508	60 mile	11259883	60 mile

Job Hours

Date	On Location Hours	Operating Hours	Date	On Location Hours	Operating Hours	Date	On Location Hours	Operating Hours
11/7/11	6	4						

TOTAL Total is the sum of each column separately

Job

Formation Name	Job	Job Times	Date	Time	Time Zone
Formation Depth (MD)	Top Bottom	Called Out	07 - Nov - 2011	13:00	MST
Form Type	BHST	On Location	07 - Nov - 2011	17:30	MST
Job depth MD	2420. ft	Job Started	07 - Nov - 2011	21:34	MST
Water Depth	Wk Ht Above Floor	Job Completed	07 - Nov - 2011	22:52	MST
Perforation Depth (MD)	From To	Departed Loc	08 - Nov - 2011	00:10	MST

Well Data

Description	New / Used	Max pressure psig	Size in	ID in	Weight lbm/ft	Thread	Grade	Top MD ft	Bottom MD ft	Top TVD ft	Bottom TVD ft
-------------	------------	-------------------	---------	-------	---------------	--------	-------	-----------	--------------	------------	---------------

Sales/Rental/3rd Party (HES)

Description	Qty	Qty uom	Depth	Supplier
PLUG,CMTG,TOP,9 5/8,HWE,8.16 MIN/9.06 MA	1	EA		

Tools and Accessories

Type	Size	Qty	Make	Depth	Type	Size	Qty	Make	Depth	Type	Size	Qty	Make
Guide Shoe					Packer					Top Plug	9 5/8	1	HES
Float Shoe					Bridge Plug					Bottom Plug			
Float Collar					Retainer					SSR plug set			
Insert Float										Plug Container	9 5/8	1	HES
Stage Tool										Centralizers			

Miscellaneous Materials

Gelling Agt	Conc	Surfactant	Conc	Acid Type	Qty	Conc	%
Treatment Fld	Conc	Inhibitor	Conc	Sand Type	Size	Qty	

Fluid Data

Stage/Plug #: 1	Fluid Name	Qty	Qty uom	Mixing Density lbm/gal	Yield ft ³ /sk	Mix Fluid Gal/sk	Rate bbl/min	Total Mix Fluid Gal/sk
Fluid #	Stage Type							

Stage/Plug #: 1									
Fluid #	Stage Type	Fluid Name	Qty	Qty uom	Mixing Density lbm/gal	Yield ft ³ /sk	Mix Fluid Gal/sk	Rate bbl/min	Total Mix Fluid Gal/sk
1	Water Spacer		20.00	bbl	8.34	.0	.0	4	
2	Lead Cement	VERSACEM (TM) SYSTEM (452010)	435.0	sacks	12.3	2.38	13.75	8	13.75
		13.75 Gal FRESH WATER							
3	Tail Cement	VERSACEM (TM) SYSTEM (452010)	160.0	sacks	12.8	2.11	11.75	7.5	11.75
		11.75 Gal FRESH WATER							
4	Displacement Fluid		186.00	bbl	8.34	.0	.0	10	
Calculated Values		Pressures		Volumes					
Displacement	186.5	Shut In: Instant		Lost Returns	0	Cement Slurry	244	Pad	
Top Of Cement	SURFACE	5 Min		Cement Returns	36	Actual Displacement	186	Treatment	
Frac Gradient		15 Min		Spacers	20	Load and Breakdown		Total Job	451
Rates									
Circulating	RIG	Mixing	8	Displacement	10	Avg. Job	9		
Cement Left In Pipe	Amount	37.07 ft	Reason	Shoe Joint					
Frac Ring # 1 @	ID	Frac ring # 2 @	ID	Frac Ring # 3 @	ID	Frac Ring # 4 @	ID		
The Information Stated Herein Is Correct				Customer Representative Signature					

The Road to Excellence Starts with Safety

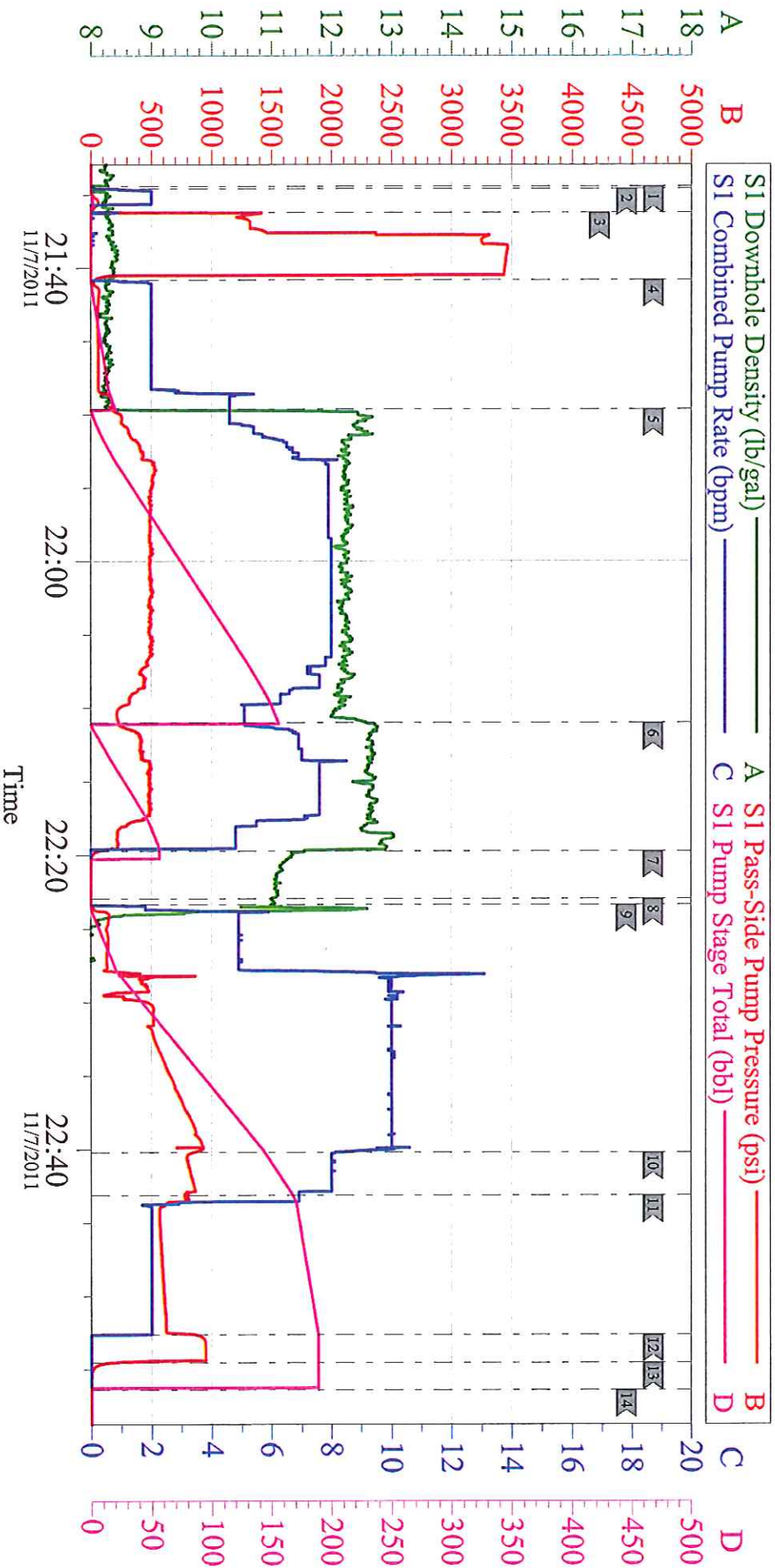
Sold To #: 300721		Ship To #: 2880074		Quote #:		Sales Order #: 8490160	
Customer: WILLIAMS PRODUCTION RMT INC - EBUS				Customer Rep: Wilson, W.C.			
Well Name: NR			Well #: 512-3			API/UWI #: 05-045-20524	
Field: Rulison		City (SAP): RIFLE		County/Parish: Garfield		State: Colorado	
Legal Description:							
Lat: N 39.553 deg. OR N 39 deg. 33 min. 10.044 secs.				Long: W 107.877 deg. OR W -108 deg. 7 min. 21.536 secs.			
Contractor: H&P 280			Rig/Platform Name/Num: H&P 280				
Job Purpose: Cement Surface Casing						Ticket Amount:	
Well Type: Development Well			Job Type: Cement Surface Casing				
Sales Person: KOHL, KYLE			Srcv Supervisor: KUKUS, CRAIG			MBU ID Emp #: 369124	

Activity Description	Date/Time	Cht #	Rate bbl/min	Volume bbl		Pressure psig		Comments
				Stage	Total	Tubing	Casing	
Call Out	11/07/2011 13:00							
Depart Yard Safety Meeting	11/07/2011 15:45							SAFETY MEETING INVOLVING THE ENTIRE CMT CREW
Arrive At Loc	11/07/2011 17:30							RIG RUNNING CSG
Assessment Of Location Safety Meeting	11/07/2011 17:35							ASSESSMENT OF LOCATION INVOLVING THE ENTIRE CMT CREW
Pre-Rig Up Safety Meeting	11/07/2011 17:40							SAFETY MEETING INVOLVING THE ENTIRE CMT CREW
Rig-Up Equipment	11/07/2011 17:45							RIG UP TO STAND PIPE / WATER TO UP RIGHT AND DAY TANK
Circulate Well	11/07/2011 20:30							RIG
Pre-Job Safety Meeting	11/07/2011 21:15							SAFETY MEETING INVOLVING EVERYONE ON LOCATION
Start Job	11/07/2011 21:34							TD 2420 FT TP 2406.8 FT SJ 37.07 FT OH 13 1/2IN MUD WT 9.9 # PIPE 53 JTS 9 5/8 IN 32.3# 1 JT 41.55 FT 30 FT LANDING JT
Other	11/07/2011 21:34		2	2			76.0	FILL LINES WITH FRESH WATER
Pressure Test	11/07/2011 21:36		0.5			3500.0		PRESSURE TEST GOOD
Pump Spacer 1	11/07/2011 21:40		4	20			180.0	FRESH WATER SPACER

Cementing Job Log

Activity Description	Date/Time	Cht #	Rate bbl/ min	Volume bbl		Pressure psig		Comments
				Stage	Total	Tubing	Casing	
Pump Lead Cement	11/07/2011 21:49		8	184.4			536.0	PUMP 435 SKS LEAD CEMENT AT 12.3 PPG 2.38 Y 13.75 GAL/SK
Pump Tail Cement	11/07/2011 22:11		7.5	60.1			510.0	PUMP 160 SKS TAIL CEMENT AT 12.8 PPG 2.11 Y 11.75 GAL/SK
Shutdown	11/07/2011 22:19							READY TUB FOR WASH UP ON TOP OF PLUG
Drop Top Plug	11/07/2011 22:22							PLUG LEFT THE PLUG CONTAINER
Pump Displacement	11/07/2011 22:23		10	186.5			980.0	PUMP FRESH WATER DISPLACEMENT
Slow Rate	11/07/2011 22:40		8	150			810.0	SLOW RATE
Slow Rate	11/07/2011 22:43		2	176			600.0	SLOW RATE LAST 10 BBLS TO 2 BBLMIN
Bump Plug	11/07/2011 22:52		2	186.5			980.0	PLUG LANDED AT 640 PSI
Check Floats	11/07/2011 22:54							FLOATS HELD / GOT 1 BBL BACK TO TANKS
End Job	11/07/2011 22:56							HAD GOOD RETURNS THRU OUT THE JOB / GOT CEMENT TO SURFACE TOTAL BACK 36 BBLS
Pre-Rig Down Safety Meeting	11/07/2011 23:00							SAFETY MEETING INVOLVING THE ENTIRE CMT CREW
Rig-Down Equipment	11/07/2011 23:05							RIG FLOOR DOWN / WASH TO PIT AND BLOW DOWN PUMP
Safety Meeting - Departing Location	11/08/2011 00:05							SAFETY MEETING INVOLVING THE ENTIRE CMT CREW
Comment	11/08/2011 00:10							THANK YOU FOR USING HALLIBURTON, CRAIG KUKUS AND CREW

WILLIAMS PRODUCTION SURFACE NR 512-3



Local Event Log

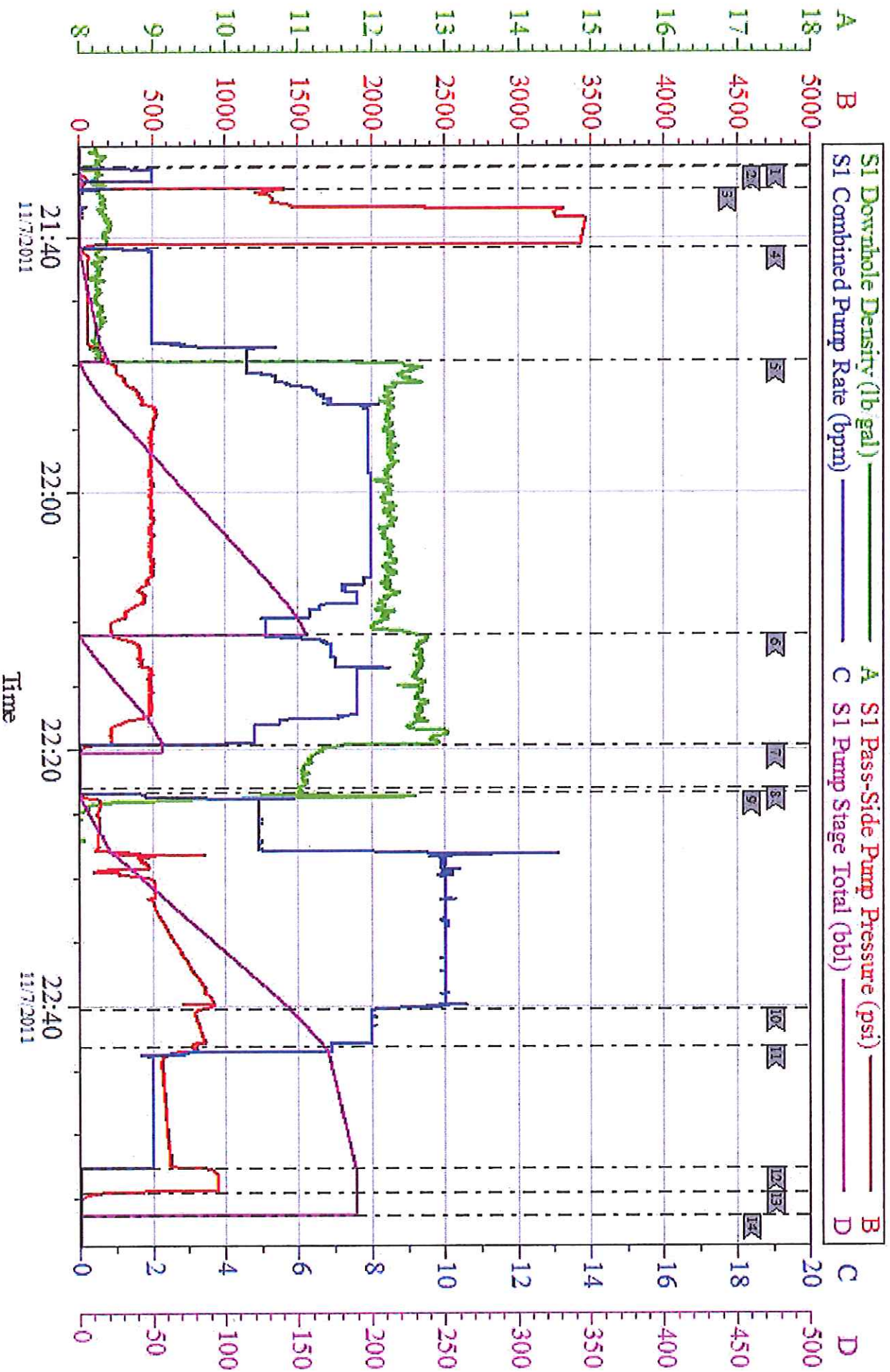
1	START JOB	21:34:24	2	PRIME LINES	21:34:33	3	PRESSURE TEST LINES	21:36:12
4	PUMP H2O SPACER AHEAD	21:40:48	5	PUMP LEAD CEMENT	21:49:38	6	PUMP TAIL CEMENT	22:11:01
7	SHUT DOWN	22:19:42	8	DROP PLUG	22:22:57	9	PUMP H2O DISPLACEMENT	22:23:21
10	SLOW RATE	22:40:12	11	SLOW RATE	22:43:08	12	BUMP PLUG	22:52:37
13	CHECK FLOATS	22:54:33	14	END JOB	22:56:23			

Customer: **WILLIAMS**
Well Description: **NR 512-3**
Company Rep: **WC WILSON**

Job Date: **07-Nov-2011**
Job Type: **SURFACE**
Cement Supervisor: **CRAIG KUKUS**

Sales Order #: **8490160**
ADC Used: **YES**
Elite #/Operator: **E 6 ADAM ANDERSON**

WILLIAMS PRODUCTION SURFACE NR 512-3



Customer: **WILLIAMS**
Well Description: **NR 512-3**
Company Rep: **WC WILSON**

Job Date: **07-Nov-2011**
Job Type: **SURFACE**
Cement Supervisor: **CRAIG KUNKUS**

Sales Order #: **8490160**
ADC Used: **YES**
Elite #/Operator: **E 6 ADAM ANDERSON**