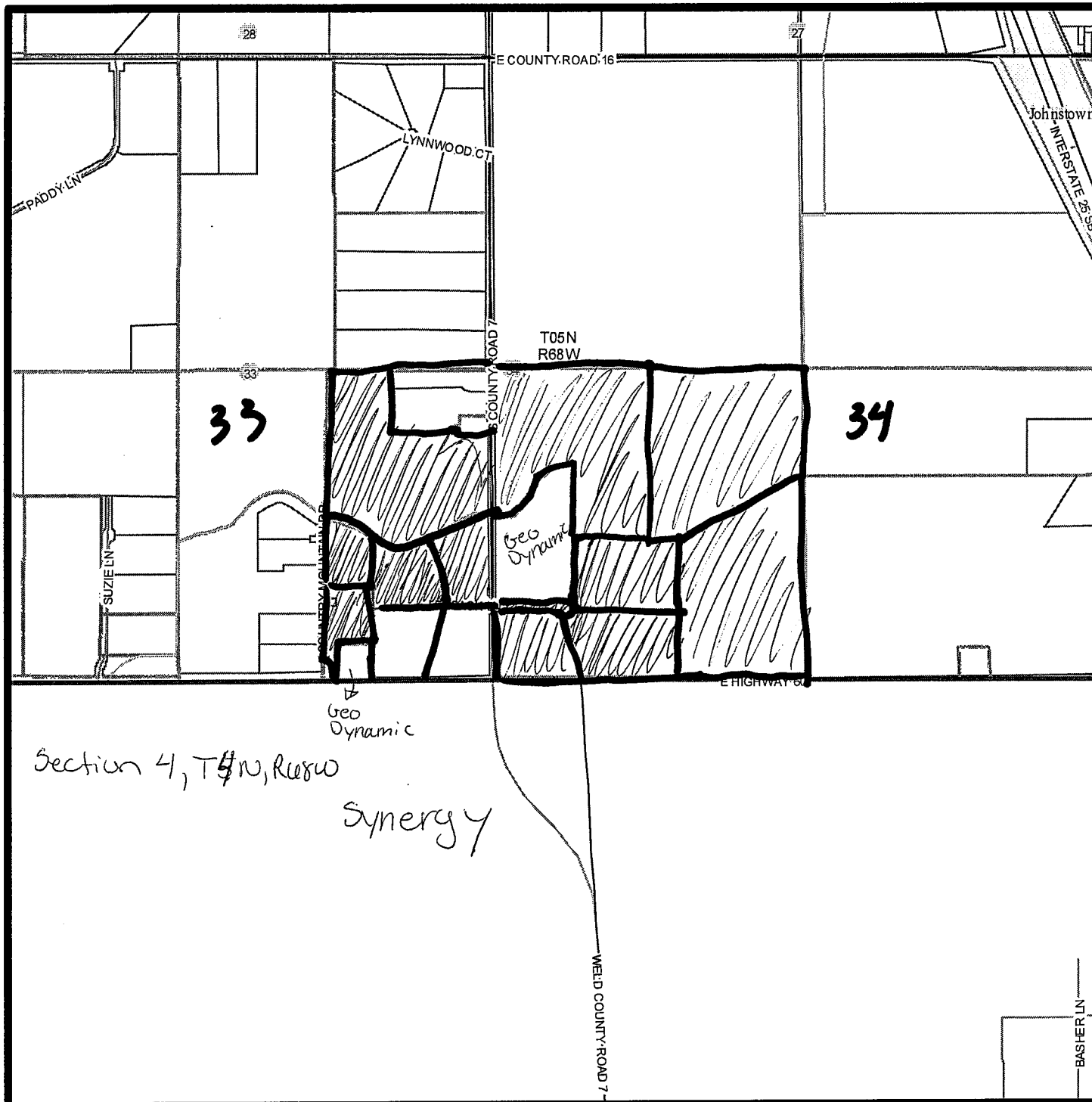


SE4-33-SN-68W and SW4-34-SN-68W



Tax Parcel

7/3/2012

Legend

- Subdivisions
- Tax Parcels
- Platted Blocks
- Buildings
- Garages
- Rocky Mountain National Park (Larimer Portion)
- Parks and Recreation
- School Property
- Natural Resource Areas
- Incorporated Areas



Created by Larimer County GIS
using data from multiple sources. Larimer County
makes no warranty as to the accuracy. This product
may not reflect recent updates prior to the date of
printing.

