

Whiting Oil & Gas

Well Name: **WOLF #36-3624H**

Surface Location: WOLF #36-3624H PAD 36-10N-59W

North American Datum 1983 , US State Plane 1983 , Colorado Northern Zone

Ground Elevation: 4925.0

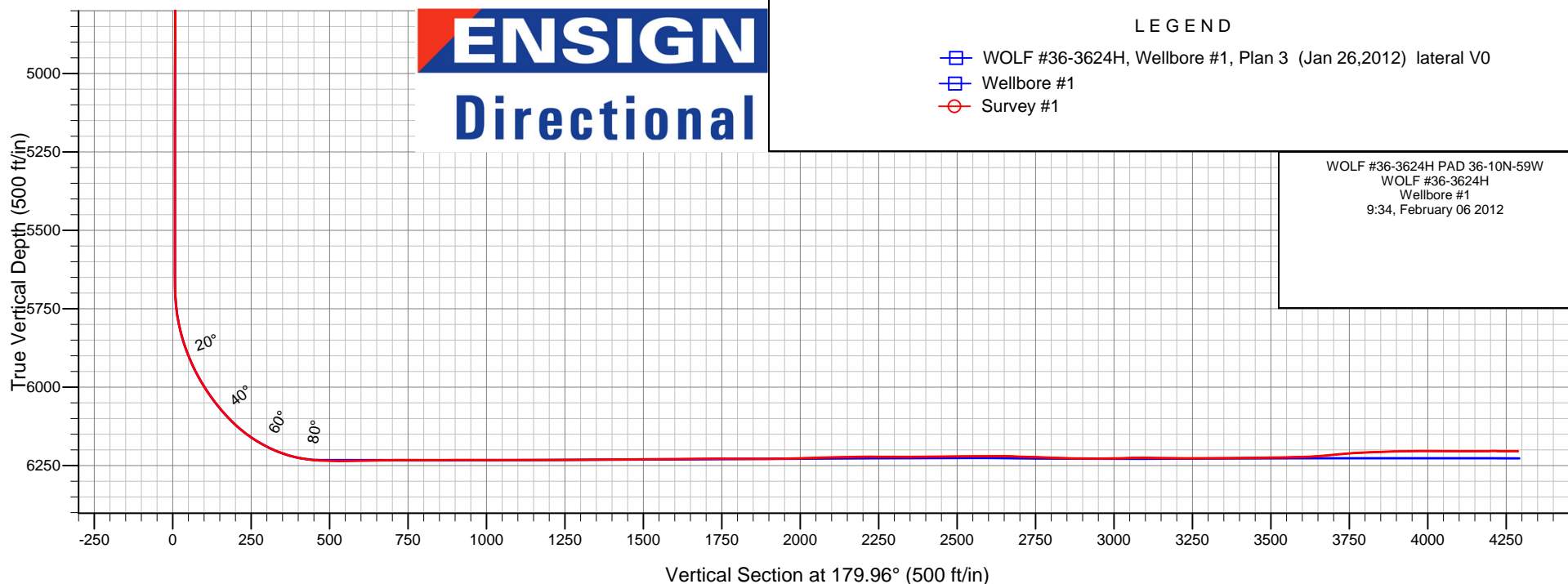
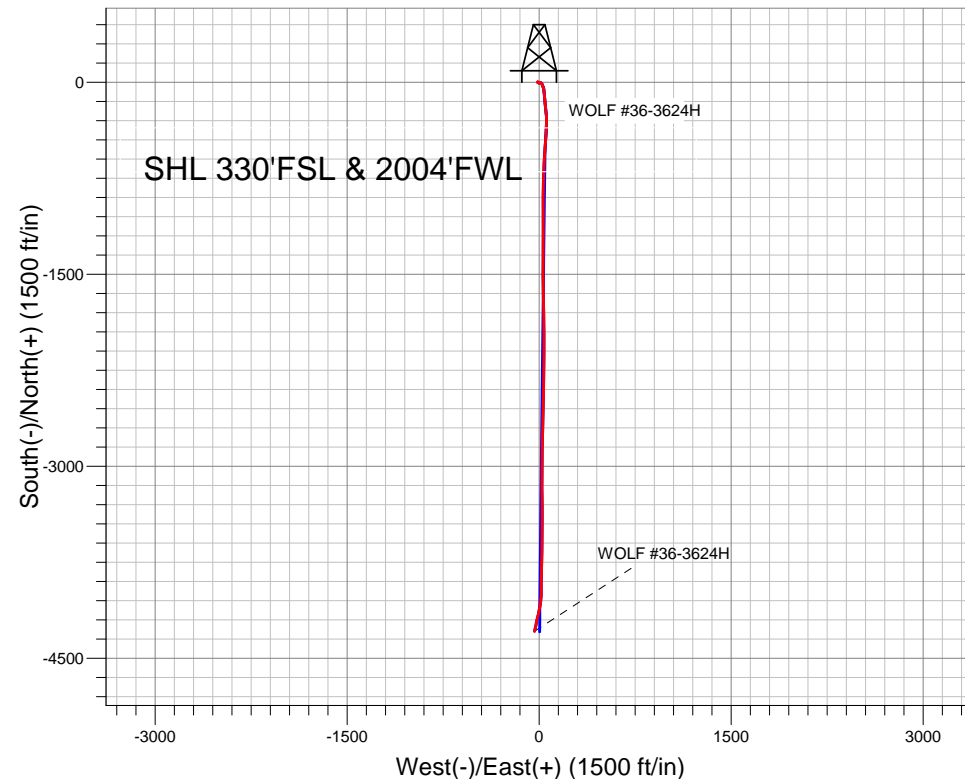
+N/-S	+E/-W	Northing	Easting	Latitude	Longitude	Slot
0.0	0.0	1538510.09	3434891.04	40.801019	-103.929136	
ENSIGN RIG 14 RKB @ 4940.0ft (ENSIGN RIG 14)						

FINAL SURVEY

Projected Bottom Hole Location

10300' MD 6204' TVD 4288' S & 37' W of
SHL

89.7 degree Incl @ 192.8 degree AZM





Directional

Whiting Oil & Gas

SEC.36-T10N-R59W

WOLF #36-3624H PAD 36-10N-59W

WOLF #36-3624H

Wellbore #1

Survey: Survey #1

Standard Survey Report

06 February, 2012

Survey										
Measured Depth (ft)	Inclination (°)	Azimuth (°)	Vertical Depth (ft)	+N-S (ft)	+E-W (ft)	Vertical Section (ft)	Dogleg Rate (°/100ft)	Build Rate (°/100ft)	Turn Rate (°/100ft)	
0.0	0.00	0.00	0.0	0.0	0.0	0.0	0.00	0.00	0.00	
2.0	0.00	251.30	2.0	0.0	0.0	0.0	0.09	0.09	0.00	
HARDLINE SH 660'FNL										
4.3	0.00	251.30	4.3	0.0	0.0	0.0	0.09	0.09	0.00	
BH HARDLINE 660'FSL										
219.0	0.20	251.30	219.0	-0.1	-0.4	0.1	0.09	0.09	0.00	
526.0	0.20	271.30	526.0	-0.3	-1.4	0.3	0.02	0.00	6.51	
802.0	0.30	255.70	802.0	-0.4	-2.6	0.4	0.04	0.04	-5.65	
1,167.0	0.40	295.30	1,167.0	-0.1	-4.7	0.1	0.07	0.03	10.85	
1,560.0	1.10	279.30	1,560.0	1.1	-9.6	-1.1	0.18	0.18	-4.07	
1,595.0	1.00	280.70	1,594.9	1.2	-10.3	-1.2	0.29	-0.29	4.00	
1,781.0	0.50	280.90	1,780.9	1.6	-12.7	-1.6	0.27	-0.27	0.11	

Company:	Whiting Oil & Gas	Local Co-ordinate Reference:	Well WOLF #36-3624H
Project:	SEC.36-T10N-R59W	TVD Reference:	RKB @ 4940.0ft (ENSIGN RIG 14)
Site:	WOLF #36-3624H PAD 36-10N-59W	MD Reference:	RKB @ 4940.0ft (ENSIGN RIG 14)
Well:	WOLF #36-3624H	North Reference:	True
Wellbore:	Wellbore #1	Survey Calculation Method:	Minimum Curvature
Design:	Wellbore #1	Database:	Landmark

Survey										
Measured Depth (ft)	Inclination (°)	Azimuth (°)	Vertical Depth (ft)	+N/-S (ft)	+E/-W (ft)	Vertical Section (ft)	Dogleg Rate (°/100ft)	Build Rate (°/100ft)	Turn Rate (°/100ft)	
1,967.0	0.40	117.60	1,966.9	1.5	-12.9	-1.5	0.48	-0.05	-87.80	
2,153.0	0.80	134.60	2,152.9	0.3	-11.4	-0.3	0.23	0.22	9.14	
2,339.0	0.90	128.50	2,338.9	-1.6	-9.3	1.6	0.07	0.05	-3.28	
2,529.0	0.60	99.50	2,528.9	-2.7	-7.2	2.6	0.25	-0.16	-15.26	
2,720.0	0.60	98.10	2,719.9	-3.0	-5.2	3.0	0.01	0.00	-0.73	
2,909.0	0.90	93.30	2,908.9	-3.2	-2.7	3.2	0.16	0.16	-2.54	
3,098.0	0.80	95.30	3,097.8	-3.4	0.1	3.4	0.06	-0.05	1.06	
3,289.0	0.60	58.50	3,288.8	-3.0	2.3	3.0	0.25	-0.10	-19.27	
3,479.0	0.60	65.70	3,478.8	-2.1	4.0	2.1	0.04	0.00	3.79	
3,669.0	0.50	37.10	3,668.8	-1.0	5.4	1.0	0.15	-0.05	-15.05	
3,859.0	0.20	59.60	3,858.8	-0.2	6.2	0.2	0.17	-0.16	11.84	
4,049.0	1.10	145.00	4,048.8	-1.5	7.5	1.5	0.58	0.47	44.95	
4,239.0	1.10	135.90	4,238.8	-4.3	9.9	4.3	0.09	0.00	-4.79	
4,429.0	1.10	124.60	4,428.7	-6.6	12.6	6.6	0.11	0.00	-5.95	
4,651.0	1.00	109.10	4,650.7	-8.5	16.2	8.5	0.14	-0.05	-6.98	
4,810.0	0.50	72.90	4,809.7	-8.7	18.2	8.7	0.42	-0.31	-22.77	
5,000.0	0.40	355.60	4,999.7	-7.8	18.9	7.8	0.30	-0.05	-40.68	
5,190.0	0.20	109.80	5,189.7	-7.3	19.2	7.3	0.27	-0.11	60.11	
5,380.0	0.40	280.70	5,379.7	-7.3	18.8	7.3	0.31	0.11	89.95	
5,603.0	0.10	193.20	5,602.7	-7.3	18.0	7.3	0.18	-0.13	-39.24	
5,630.0	0.10	81.60	5,629.7	-7.3	18.1	7.3	0.61	0.00	-413.33	
5,661.0	0.30	181.30	5,660.7	-7.4	18.1	7.4	1.07	0.65	321.61	
5,693.0	1.80	165.10	5,692.7	-8.0	18.2	8.0	4.73	4.69	-50.63	
5,725.0	4.60	154.00	5,724.6	-9.6	18.9	9.6	8.92	8.75	-34.69	
5,757.0	7.90	157.30	5,756.4	-12.8	20.3	12.8	10.37	10.31	10.31	
5,788.0	11.30	154.20	5,787.0	-17.5	22.5	17.5	11.09	10.97	-10.00	
5,820.0	14.70	154.40	5,818.1	-24.0	25.6	24.0	10.63	10.63	0.63	
5,852.0	17.90	158.00	5,848.9	-32.2	29.2	32.2	10.48	10.00	11.25	
5,883.0	20.80	163.50	5,878.1	-41.9	32.5	41.9	11.04	9.35	17.74	
5,914.0	23.00	169.50	5,906.9	-53.1	35.2	53.2	10.12	7.10	19.35	
5,946.0	25.60	174.00	5,936.0	-66.2	37.1	66.2	9.97	8.13	14.06	
5,978.0	28.30	175.60	5,964.6	-80.6	38.4	80.6	8.74	8.44	5.00	
6,009.0	31.30	174.90	5,991.4	-96.0	39.6	96.0	9.74	9.68	-2.26	
6,041.0	34.40	174.40	6,018.3	-113.2	41.3	113.3	9.72	9.69	-1.56	
6,073.0	37.10	174.60	6,044.3	-131.9	43.0	131.9	8.45	8.44	0.63	
6,104.0	40.10	174.40	6,068.5	-151.1	44.9	151.1	9.69	9.68	-0.65	
6,136.0	43.10	174.40	6,092.4	-172.2	47.0	172.3	9.38	9.38	0.00	
6,168.0	46.30	173.90	6,115.2	-194.6	49.3	194.7	10.06	10.00	-1.56	
6,200.0	50.20	173.70	6,136.5	-218.4	51.9	218.4	12.20	12.19	-0.63	
6,232.0	55.00	174.40	6,155.9	-243.6	54.5	243.7	15.10	15.00	2.19	
6,263.0	58.80	176.50	6,172.9	-269.5	56.5	269.6	13.51	12.26	6.77	
6,295.0	62.60	179.70	6,188.5	-297.4	57.4	297.4	14.73	11.88	10.00	
6,326.0	66.70	182.00	6,201.8	-325.4	57.0	325.4	14.83	13.23	7.42	
6,358.0	71.10	182.50	6,213.3	-355.2	55.8	355.3	13.83	13.75	1.56	
6,389.0	76.00	183.50	6,222.1	-384.9	54.3	384.9	16.11	15.81	3.23	
6,424.0	81.70	183.90	6,228.8	-419.2	52.1	419.2	16.32	16.29	1.14	
6,508.0	89.30	183.70	6,235.4	-502.7	46.5	502.7	9.05	9.05	-0.24	
6,539.0	89.80	183.70	6,235.7	-533.6	44.5	533.6	1.61	1.61	0.00	
6,570.0	90.30	183.30	6,235.6	-564.5	42.6	564.6	2.07	1.61	-1.29	
6,600.0	90.90	183.30	6,235.3	-594.5	40.9	594.5	2.00	2.00	0.00	
6,631.0	91.20	183.40	6,234.8	-625.4	39.1	625.5	1.02	0.97	0.32	
6,662.0	91.70	183.20	6,234.0	-656.4	37.3	656.4	1.74	1.61	-0.65	
6,692.0	91.10	182.60	6,233.2	-686.3	35.8	686.3	2.83	-2.00	-2.00	
6,723.0	90.30	182.30	6,232.9	-717.3	34.5	717.3	2.76	-2.58	-0.97	

Company:	Whiting Oil & Gas	Local Co-ordinate Reference:	Well WOLF #36-3624H
Project:	SEC.36-T10N-R59W	TVD Reference:	RKB @ 4940.0ft (ENSIGN RIG 14)
Site:	WOLF #36-3624H PAD 36-10N-59W	MD Reference:	RKB @ 4940.0ft (ENSIGN RIG 14)
Well:	WOLF #36-3624H	North Reference:	True
Wellbore:	Wellbore #1	Survey Calculation Method:	Minimum Curvature
Design:	Wellbore #1	Database:	Landmark

Survey										
Measured Depth (ft)	Inclination (°)	Azimuth (°)	Vertical Depth (ft)	+N/-S (ft)	+E/-W (ft)	Vertical Section (ft)	Dogleg Rate (°/100ft)	Build Rate (°/100ft)	Turn Rate (°/100ft)	
6,754.0	90.20	181.60	6,232.7	-748.3	33.4	748.3	2.28	-0.32	-2.26	
6,785.0	90.00	180.90	6,232.7	-779.3	32.7	779.3	2.35	-0.65	-2.26	
6,816.0	89.90	180.60	6,232.7	-810.3	32.3	810.3	1.02	-0.32	-0.97	
6,846.0	90.10	180.40	6,232.7	-840.3	32.1	840.3	0.94	0.67	-0.67	
6,877.0	90.30	180.50	6,232.6	-871.3	31.8	871.3	0.72	0.65	0.32	
6,907.0	90.10	180.10	6,232.5	-901.3	31.7	901.3	1.49	-0.67	-1.33	
6,938.0	89.80	179.80	6,232.5	-932.3	31.7	932.3	1.37	-0.97	-0.97	
6,968.0	90.00	179.70	6,232.6	-962.3	31.8	962.3	0.75	0.67	-0.33	
6,999.0	89.70	180.00	6,232.7	-993.2	31.9	993.3	1.37	-0.97	0.97	
7,030.0	89.80	179.90	6,232.8	-1,024.2	31.9	1,024.3	0.46	0.32	-0.32	
7,055.7	90.06	179.81	6,232.8	-1,049.9	32.0	1,050.0	1.05	1.00	-0.33	
WP 1										
7,060.0	90.10	179.80	6,232.8	-1,054.2	32.0	1,054.3	1.05	1.00	-0.33	
7,091.0	89.80	179.90	6,232.8	-1,085.2	32.1	1,085.3	1.02	-0.97	0.32	
7,122.0	90.00	179.90	6,232.9	-1,116.2	32.1	1,116.3	0.65	0.65	0.00	
7,152.0	89.80	180.40	6,232.9	-1,146.2	32.1	1,146.3	1.80	-0.67	1.67	
7,183.0	90.10	180.10	6,233.0	-1,177.2	31.9	1,177.3	1.37	0.97	-0.97	
7,214.0	90.50	180.00	6,232.8	-1,208.2	31.9	1,208.3	1.33	1.29	-0.32	
7,245.0	90.90	180.00	6,232.4	-1,239.2	31.9	1,239.3	1.29	1.29	0.00	
7,276.0	90.70	180.40	6,232.0	-1,270.2	31.8	1,270.3	1.44	-0.65	1.29	
7,307.0	90.50	180.20	6,231.7	-1,301.2	31.6	1,301.3	0.91	-0.65	-0.65	
7,340.0	90.50	180.20	6,231.4	-1,334.2	31.5	1,334.3	0.00	0.00	0.00	
7,371.0	90.60	180.20	6,231.1	-1,365.2	31.4	1,365.3	0.32	0.32	0.00	
7,403.0	90.60	180.30	6,230.8	-1,397.2	31.3	1,397.3	0.31	0.00	0.31	
7,434.0	89.80	179.90	6,230.6	-1,428.2	31.2	1,428.3	2.89	-2.58	-1.29	
7,466.0	90.30	179.90	6,230.6	-1,460.2	31.3	1,460.3	1.56	1.56	0.00	
7,498.0	90.50	180.10	6,230.4	-1,492.2	31.3	1,492.3	0.88	0.63	0.63	
7,530.0	90.30	180.00	6,230.2	-1,524.2	31.2	1,524.3	0.70	-0.63	-0.31	
7,555.8	90.38	180.00	6,230.0	-1,550.0	31.2	1,550.0	0.31	0.31	0.00	
WP 2										
7,562.0	90.40	180.00	6,230.0	-1,556.2	31.2	1,556.3	0.31	0.31	0.00	
7,594.0	90.10	180.20	6,229.8	-1,588.2	31.2	1,588.3	1.13	-0.94	0.63	
7,625.0	90.50	180.10	6,229.7	-1,619.2	31.1	1,619.3	1.33	1.29	-0.32	
7,657.0	90.80	179.40	6,229.3	-1,651.2	31.2	1,651.3	2.38	0.94	-2.19	
7,689.0	91.00	178.60	6,228.8	-1,683.2	31.8	1,683.2	2.58	0.63	-2.50	
7,721.0	90.50	178.50	6,228.4	-1,715.2	32.6	1,715.2	1.59	-1.56	-0.31	
7,752.0	89.60	178.20	6,228.4	-1,746.2	33.5	1,746.2	3.06	-2.90	-0.97	
7,784.0	89.40	178.10	6,228.6	-1,778.2	34.5	1,778.2	0.70	-0.63	-0.31	
7,816.0	89.70	178.60	6,228.9	-1,810.2	35.5	1,810.2	1.82	0.94	1.56	
7,847.0	90.00	178.60	6,229.0	-1,841.2	36.2	1,841.2	0.97	0.97	0.00	
7,879.0	90.40	179.20	6,228.9	-1,873.1	36.8	1,873.2	2.25	1.25	1.88	
7,911.0	90.70	179.30	6,228.6	-1,905.1	37.3	1,905.2	0.99	0.94	0.31	
7,942.0	90.30	180.00	6,228.3	-1,936.1	37.4	1,936.2	2.60	-1.29	2.26	
7,974.0	91.00	180.20	6,227.9	-1,968.1	37.4	1,968.2	2.28	2.19	0.63	
8,007.0	91.50	180.10	6,227.2	-2,001.1	37.3	2,001.2	1.55	1.52	-0.30	
8,038.0	91.50	180.10	6,226.4	-2,032.1	37.2	2,032.1	0.00	0.00	0.00	
8,055.8	91.67	179.98	6,225.9	-2,049.9	37.2	2,050.0	1.16	0.97	-0.65	
WP 3										
8,069.0	91.80	179.90	6,225.5	-2,063.1	37.2	2,063.1	1.16	0.97	-0.65	
8,101.0	91.90	180.00	6,224.5	-2,095.1	37.3	2,095.1	0.44	0.31	0.31	
8,133.0	91.60	179.70	6,223.5	-2,127.1	37.4	2,127.1	1.33	-0.94	-0.94	
8,164.0	91.50	179.60	6,222.6	-2,158.1	37.5	2,158.1	0.46	-0.32	-0.32	
8,196.0	90.50	179.60	6,222.1	-2,190.1	37.8	2,190.1	3.13	-3.13	0.00	
8,227.0	89.90	180.10	6,222.0	-2,221.1	37.9	2,221.1	2.52	-1.94	1.61	

Company:	Whiting Oil & Gas	Local Co-ordinate Reference:	Well WOLF #36-3624H
Project:	SEC.36-T10N-R59W	TVD Reference:	RKB @ 4940.0ft (ENSIGN RIG 14)
Site:	WOLF #36-3624H PAD 36-10N-59W	MD Reference:	RKB @ 4940.0ft (ENSIGN RIG 14)
Well:	WOLF #36-3624H	North Reference:	True
Wellbore:	Wellbore #1	Survey Calculation Method:	Minimum Curvature
Design:	Wellbore #1	Database:	Landmark

Survey

Measured Depth (ft)	Inclination (°)	Azimuth (°)	Vertical Depth (ft)	+N/-S (ft)	+E/-W (ft)	Vertical Section (ft)	Dogleg Rate (°/100ft)	Build Rate (°/100ft)	Turn Rate (°/100ft)
8,259.0	89.90	180.40	6,222.0	-2,253.1	37.7	2,253.1	0.94	0.00	0.94
8,290.0	89.80	181.10	6,222.1	-2,284.1	37.3	2,284.1	2.28	-0.32	2.26
8,322.0	90.10	181.20	6,222.1	-2,316.0	36.7	2,316.1	0.99	0.94	0.31
8,354.0	90.30	181.30	6,222.0	-2,348.0	36.0	2,348.1	0.70	0.63	0.31
8,385.0	89.80	181.70	6,222.0	-2,379.0	35.2	2,379.1	2.07	-1.61	1.29
8,417.0	90.10	181.60	6,222.0	-2,411.0	34.2	2,411.0	0.99	0.94	-0.31
8,448.0	90.50	181.60	6,221.9	-2,442.0	33.4	2,442.0	1.29	1.29	0.00
8,481.0	91.00	181.40	6,221.4	-2,475.0	32.5	2,475.0	1.63	1.52	-0.61
8,512.0	90.50	181.40	6,221.0	-2,506.0	31.7	2,506.0	1.61	-1.61	0.00
8,544.0	90.30	181.80	6,220.8	-2,538.0	30.9	2,538.0	1.40	-0.63	1.25
8,556.3	90.42	181.95	6,220.7	-2,550.3	30.4	2,550.3	1.56	0.94	1.25
WP 4									
8,576.0	90.60	182.20	6,220.6	-2,569.9	29.7	2,570.0	1.56	0.94	1.25
8,608.0	90.50	182.50	6,220.3	-2,601.9	28.4	2,601.9	0.99	-0.31	0.94
8,639.0	90.20	183.00	6,220.1	-2,632.9	26.9	2,632.9	1.88	-0.97	1.61
8,671.0	88.40	181.50	6,220.5	-2,664.8	25.7	2,664.9	7.32	-5.63	-4.69
8,703.0	87.60	180.40	6,221.6	-2,696.8	25.1	2,696.8	4.25	-2.50	-3.44
8,734.0	87.80	180.30	6,222.8	-2,727.8	25.0	2,727.8	0.72	0.65	-0.32
8,766.0	88.00	180.20	6,224.0	-2,759.8	24.8	2,759.8	0.70	0.63	-0.31
8,797.0	88.10	180.30	6,225.0	-2,790.8	24.7	2,790.8	0.46	0.32	0.32
8,829.0	88.20	180.50	6,226.1	-2,822.7	24.5	2,822.8	0.70	0.31	0.63
8,861.0	89.00	180.50	6,226.9	-2,854.7	24.2	2,854.7	2.50	2.50	0.00
8,892.0	89.20	180.40	6,227.3	-2,885.7	23.9	2,885.7	0.72	0.65	-0.32
8,924.0	89.40	180.30	6,227.7	-2,917.7	23.7	2,917.7	0.70	0.63	-0.31
8,956.0	90.40	180.30	6,227.8	-2,949.7	23.6	2,949.7	3.13	3.13	0.00
8,987.0	90.30	180.50	6,227.6	-2,980.7	23.4	2,980.7	0.72	-0.32	0.65
9,019.0	90.90	181.10	6,227.3	-3,012.7	22.9	3,012.7	2.65	1.88	1.88
9,051.0	92.20	181.30	6,226.4	-3,044.7	22.2	3,044.7	4.11	4.06	0.63
9,056.3	91.98	181.12	6,226.2	-3,050.0	22.1	3,050.0	5.32	-4.06	-3.44
WP 5									
9,083.0	90.90	180.20	6,225.5	-3,076.7	21.8	3,076.7	5.32	-4.06	-3.44
9,114.0	89.20	179.30	6,225.5	-3,107.7	22.0	3,107.7	6.20	-5.48	-2.90
9,146.0	89.10	179.40	6,226.0	-3,139.7	22.3	3,139.7	0.44	-0.31	0.31
9,177.0	89.30	179.30	6,226.4	-3,170.7	22.7	3,170.7	0.72	0.65	-0.32
9,209.0	89.30	179.40	6,226.8	-3,202.7	23.0	3,202.7	0.31	0.00	0.31
9,241.0	89.80	179.40	6,227.1	-3,234.7	23.4	3,234.7	1.56	1.56	0.00
9,288.0	90.40	179.70	6,227.0	-3,281.7	23.7	3,281.7	1.43	1.28	0.64
9,319.0	90.10	179.90	6,226.8	-3,312.7	23.9	3,312.7	1.16	-0.97	0.65
9,351.0	90.40	180.10	6,226.7	-3,344.7	23.9	3,344.7	1.13	0.94	0.63
9,382.0	90.90	180.60	6,226.4	-3,375.7	23.7	3,375.7	2.28	1.61	1.61
9,414.0	91.00	180.40	6,225.8	-3,407.6	23.4	3,407.7	0.70	0.31	-0.63
9,445.0	90.60	179.90	6,225.4	-3,438.6	23.3	3,438.7	2.07	-1.29	-1.61
9,477.0	90.70	179.70	6,225.0	-3,470.6	23.4	3,470.7	0.70	0.31	-0.63
9,508.0	90.90	180.30	6,224.6	-3,501.6	23.4	3,501.7	2.04	0.65	1.94
9,540.0	91.00	180.30	6,224.1	-3,533.6	23.2	3,533.6	0.31	0.31	0.00
9,556.4	90.95	180.35	6,223.8	-3,550.0	23.2	3,550.0	0.44	-0.31	0.31
WP 6									
9,572.0	90.90	180.40	6,223.5	-3,565.6	23.0	3,565.6	0.44	-0.31	0.31
9,604.0	91.50	181.00	6,222.9	-3,597.6	22.7	3,597.6	2.65	1.88	1.88
9,635.0	92.90	181.50	6,221.7	-3,628.6	22.0	3,628.6	4.80	4.52	1.61
9,666.0	95.10	182.40	6,219.5	-3,659.5	20.9	3,659.5	7.66	7.10	2.90
9,698.0	95.40	182.90	6,216.6	-3,691.3	19.5	3,691.3	1.82	0.94	1.56
9,730.0	95.10	181.90	6,213.7	-3,723.2	18.1	3,723.2	3.25	-0.94	-3.13

Company:	Whiting Oil & Gas	Local Co-ordinate Reference:	Well WOLF #36-3624H
Project:	SEC.36-T10N-R59W	TVD Reference:	RKB @ 4940.0ft (ENSIGN RIG 14)
Site:	WOLF #36-3624H PAD 36-10N-59W	MD Reference:	RKB @ 4940.0ft (ENSIGN RIG 14)
Well:	WOLF #36-3624H	North Reference:	True
Wellbore:	Wellbore #1	Survey Calculation Method:	Minimum Curvature
Design:	Wellbore #1	Database:	Landmark

Survey

Measured Depth (ft)	Inclination (°)	Azimuth (°)	Vertical Depth (ft)	+N/-S (ft)	+E/-W (ft)	Vertical Section (ft)	Dogleg Rate (°/100ft)	Build Rate (°/100ft)	Turn Rate (°/100ft)
9,761.0	94.00	180.40	6,211.2	-3,754.1	17.5	3,754.1	5.99	-3.55	-4.84
9,793.0	92.70	179.90	6,209.3	-3,786.0	17.4	3,786.0	4.35	-4.06	-1.56
9,825.0	92.50	180.30	6,207.9	-3,818.0	17.4	3,818.0	1.40	-0.63	1.25
9,856.0	92.40	179.90	6,206.5	-3,848.9	17.3	3,848.9	1.33	-0.32	-1.29
9,888.0	91.50	179.90	6,205.5	-3,880.9	17.4	3,880.9	2.81	-2.81	0.00
9,920.0	90.70	181.00	6,204.8	-3,912.9	17.1	3,912.9	4.25	-2.50	3.44
9,951.0	90.80	180.40	6,204.4	-3,943.9	16.7	3,943.9	1.96	0.32	-1.94
9,983.0	90.70	181.20	6,204.0	-3,975.9	16.3	3,975.9	2.52	-0.31	2.50
10,014.0	89.60	181.90	6,203.9	-4,006.9	15.5	4,006.9	4.21	-3.55	2.26
10,046.0	89.50	185.20	6,204.2	-4,038.8	13.5	4,038.8	10.32	-0.31	10.31
10,058.3	89.62	186.47	6,204.3	-4,051.1	12.2	4,051.1	10.35	0.94	10.31
WP 7									
10,078.0	89.80	188.50	6,204.4	-4,070.6	9.7	4,070.6	10.35	0.94	10.31
10,109.0	90.40	190.50	6,204.3	-4,101.2	4.5	4,101.2	6.74	1.94	6.45
10,141.0	90.10	192.10	6,204.2	-4,132.5	-1.7	4,132.5	5.09	-0.94	5.00
10,173.0	90.00	193.10	6,204.2	-4,163.8	-8.7	4,163.8	3.14	-0.31	3.13
10,205.0	90.50	193.50	6,204.0	-4,194.9	-16.1	4,194.9	2.00	1.56	1.25
10,237.0	89.30	191.30	6,204.1	-4,226.2	-22.9	4,226.1	7.83	-3.75	-6.88
10,253.0	89.70	192.80	6,204.2	-4,241.8	-26.3	4,241.8	9.70	2.50	9.38
10,295.5	89.70	192.80	6,204.4	-4,283.2	-35.7	4,283.2	0.00	0.00	0.00
BHL 660'FSL & 1957'FWL									
10,300.0	89.70	192.80	6,204.5	-4,287.6	-36.7	4,287.6	0.00	0.00	0.00

Checked By: _____ Approved By: _____ Date: _____