



CEMENT BOND LOG  
GAMMA RAY  
COLLAR CORRELATION LOG

Company	WHITING OIL & GAS CORP.
Well	WOLF 36-3624H
Field	RED TAIL
County	WELD
State	COLORADO

Country USA

Company	WHITTING OIL & GAS CORP.	
Well	WOLF 36-3624H	
Field	RED TAIL	
County	WELD	
State	COLORADO	Country USA

Location: API #: 05-123-34787-0000

NE  
NW

SEC 36 TWP 10N RGE 59W

Permanent Datum	GROUND LEVEL	Elevation	4925
Log Measured From	KELLY BUSHING		
Drilling Measured From	KELLY BUSHING		

NONE

Elevation	
K.B. 4940	
D.F. 4939	
G.L. 4925	

Date	15-MAR-2012
------	-------------

Run Number	ONE
1	100

Depth Logger	5602
--------------	------

Bottom Logged Interval	5596
------------------------	------

Top Log Interval	20
------------------	----

Open Hole Size	8-3/4"
Type Fluid	WATER

Density / Viscosity	8341B/GAI
Type Fluid	WATER

Max. Recorded Temp.	NOT RECORDED
---------------------	--------------

Estimated Cement Top	1824
----------------------	------

Time Well Ready	N/A
-----------------	-----

Time Logger on Bottom	N/A
-----------------------	-----

Equipment Number	HD 119
------------------	--------

Recorded By	SAM HOBBER
Location	F.I. LUPION, C

Witnessed By	MIKE STAB
Reviewed by	SAVI HOFFER

Wellbore ID	Wellbore Name
	Borehole Record

Run Number	Bit	From	To
------------	-----	------	----


--	--	--	--	--


Casing Record	Size	Wgt
---------------	------	-----

Surface String	9-5/8"	36#
----------------	--------	-----

Prot. String	7"	29#
	4.400"	4.400"

Production String	4-1/2"	11.6
-------------------	--------	------

--	--	--

[illegible][illegible]


&lt;&lt;&lt; Fold Here &gt;&gt;&gt;

All interpretations are opinions based on inferences from electrical or other measurements and we cannot and do not guarantee the accuracy or correctness of any interpretation, and we shall not, except in the case of gross or willful negligence on our part, be liable or responsible for any loss, costs, damages, or expenses incurred or sustained by anyone resulting from any interpretation made by any of our officers, agents or employees. These interpretations are also subject to our general terms and conditions set out in our current Price Schedule.

## Comments


CEMENT BOND LOG IS FIRST RUN IN HOLE.  
RUN CBL FROM ABOVE BRIDGE PLUG AT 5635'.  
RUN CBL UNDER 1000# PSI SURFACE PRESSURE.  
ESTIMATED CEMENT TOP AT 1824'.

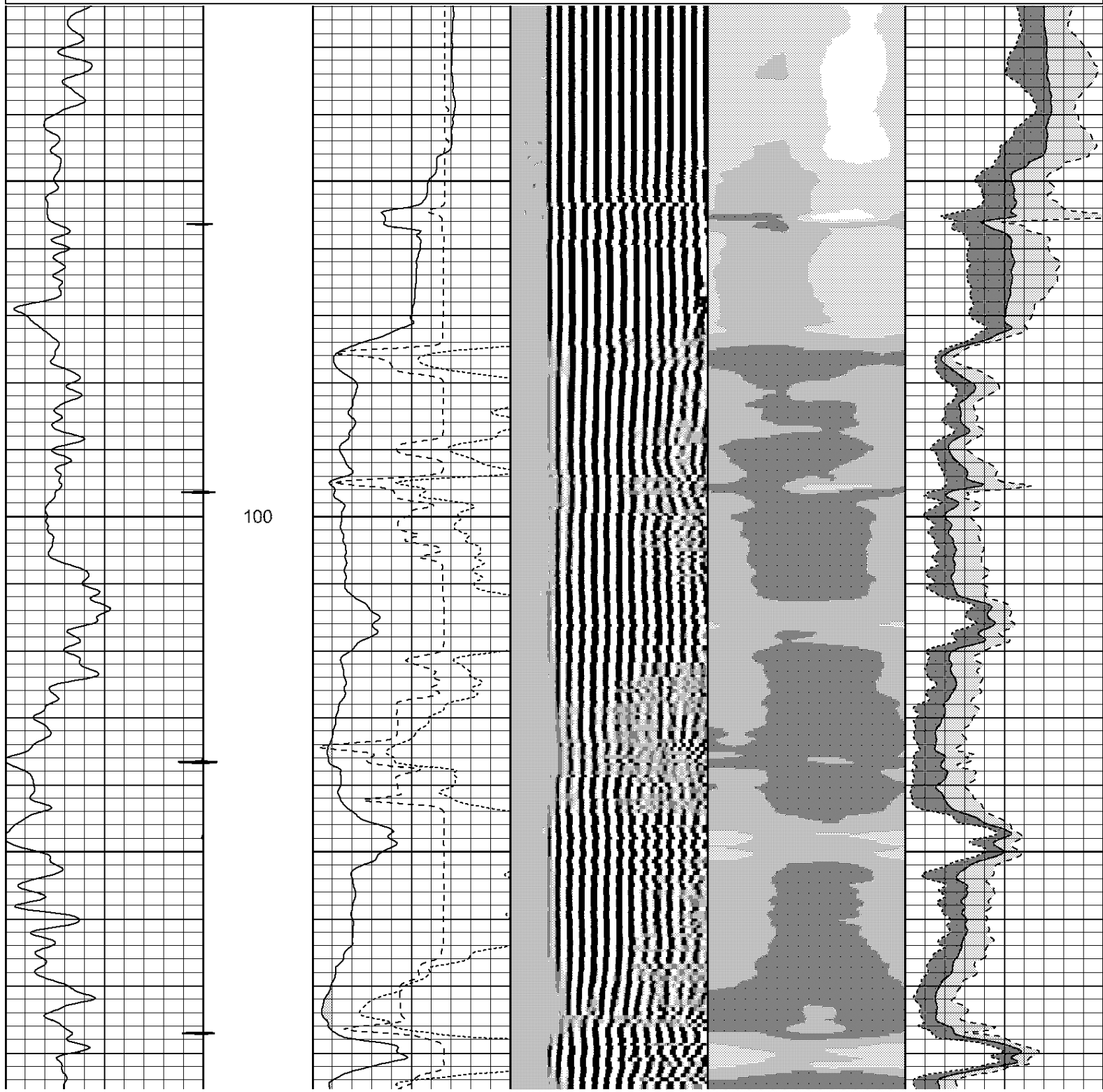
THANK YOU FOR USING PURE ENERGY SERVICES!!

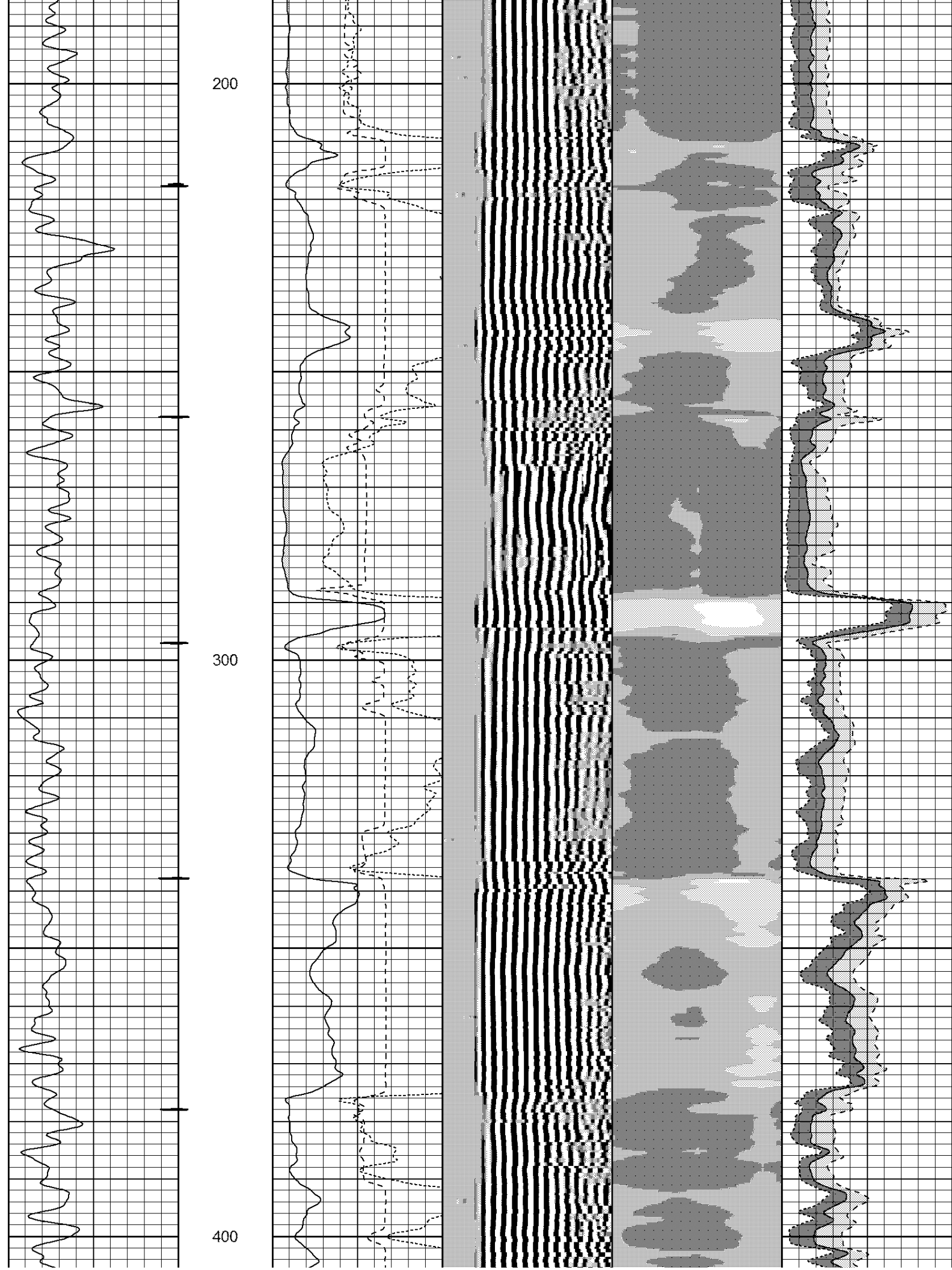
Sensor	Offset (ft)	Schematic	Description	Len (ft)	OD (in)	Wt (lb)
						

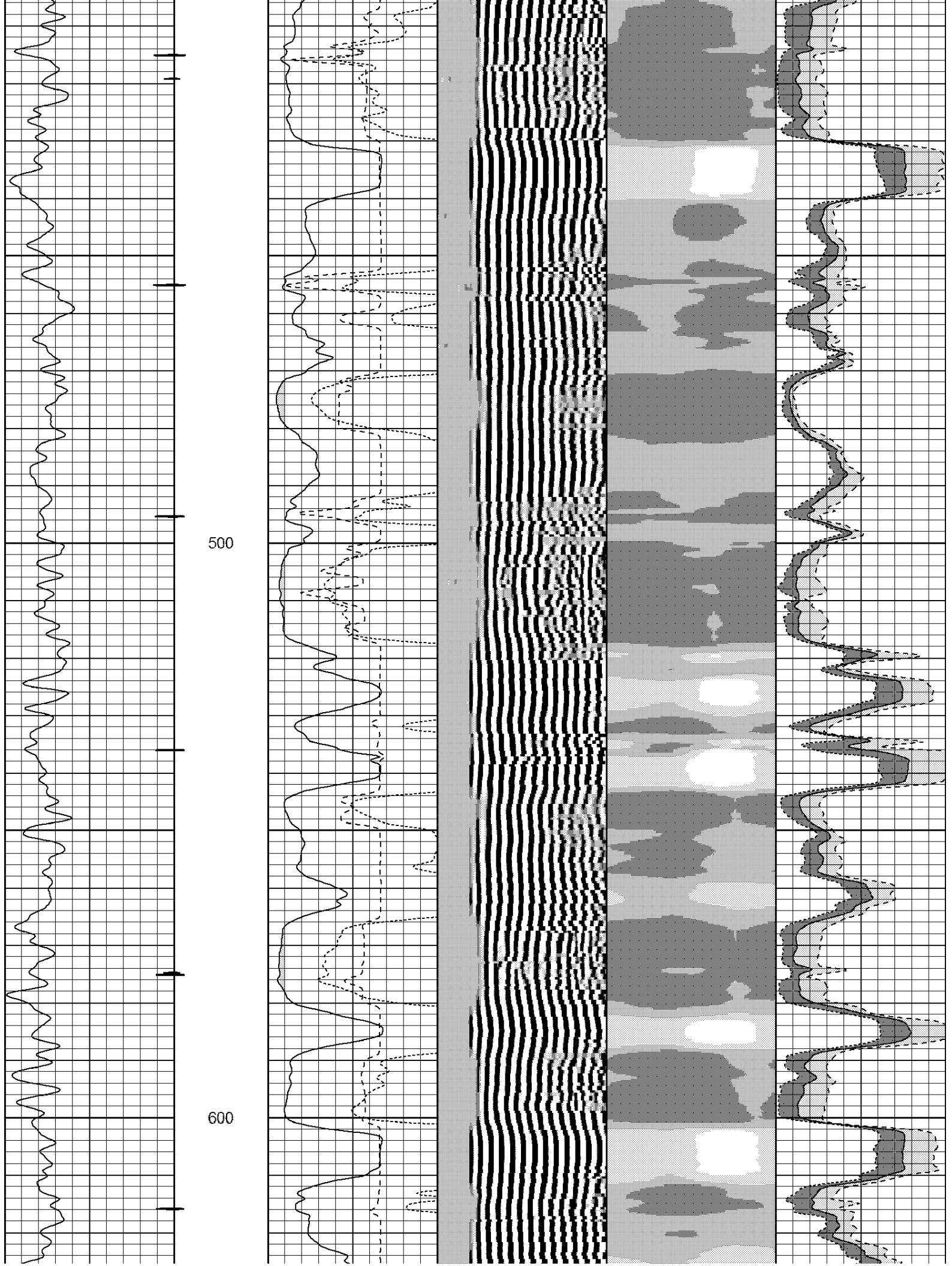
			CENT-TEKCO (101)	2.73	2.75	10.00
WVFS1	16.00					
WVFS2	16.00					
WVFS3	16.00		TEKSCBL-TEKCO275 (0001)	9.33	2.75	100.00
WVFS4	16.00					
WVFS5	16.00					
WVFS6	16.00					
WVFS7	16.00					
WVFS8	16.00					
WV3FT	15.25					
WVFCAL	15.25					
WV5FT	14.25					
WVFSYNC	10.42		CENT-TEKCO (101)	2.73	2.75	10.00
CCL	6.83		CCL-2.75 (TEKCO) 2.75 TEKCO CCL	1.55	2.75	10.00
GR	3.79		GR-TEKCO (101SGR) 2.75 HIGH TEMP LOGGING GR	3.41	2.75	25.00
			CENT-TEKCO (101)	2.73	2.75	10.00
Dataset: whiting_wolf_36-3624h.db: field/well/run1/pass4 Total Length: 22.48 ft Total Weight: 165.00 lb O.D. 2.75 in						

Database File: whiting\_wolf\_36-3624h.db  
 Dataset Pathname: pass4  
 Presentation Format: p\_rcbl  
 Dataset Creation: Thu Mar 15 09:30:05 2012 by Log SCH 120126  
 Charted by: Depth in Feet scaled 1:240

Gamma Ray		3' Amplitude		5' Variable Density Log		Cement Map		Average Amplitude	
30	(GAPI) 130	0	(mV) 100	200	1200	0	80	0	100
CCL		3' Amplitude x 5						Minimum Amplitude	
		0 (mV) 20						0 100	
		3' Travel Time						Maximum Amplitude	
		650 (usec) 150						0 100	

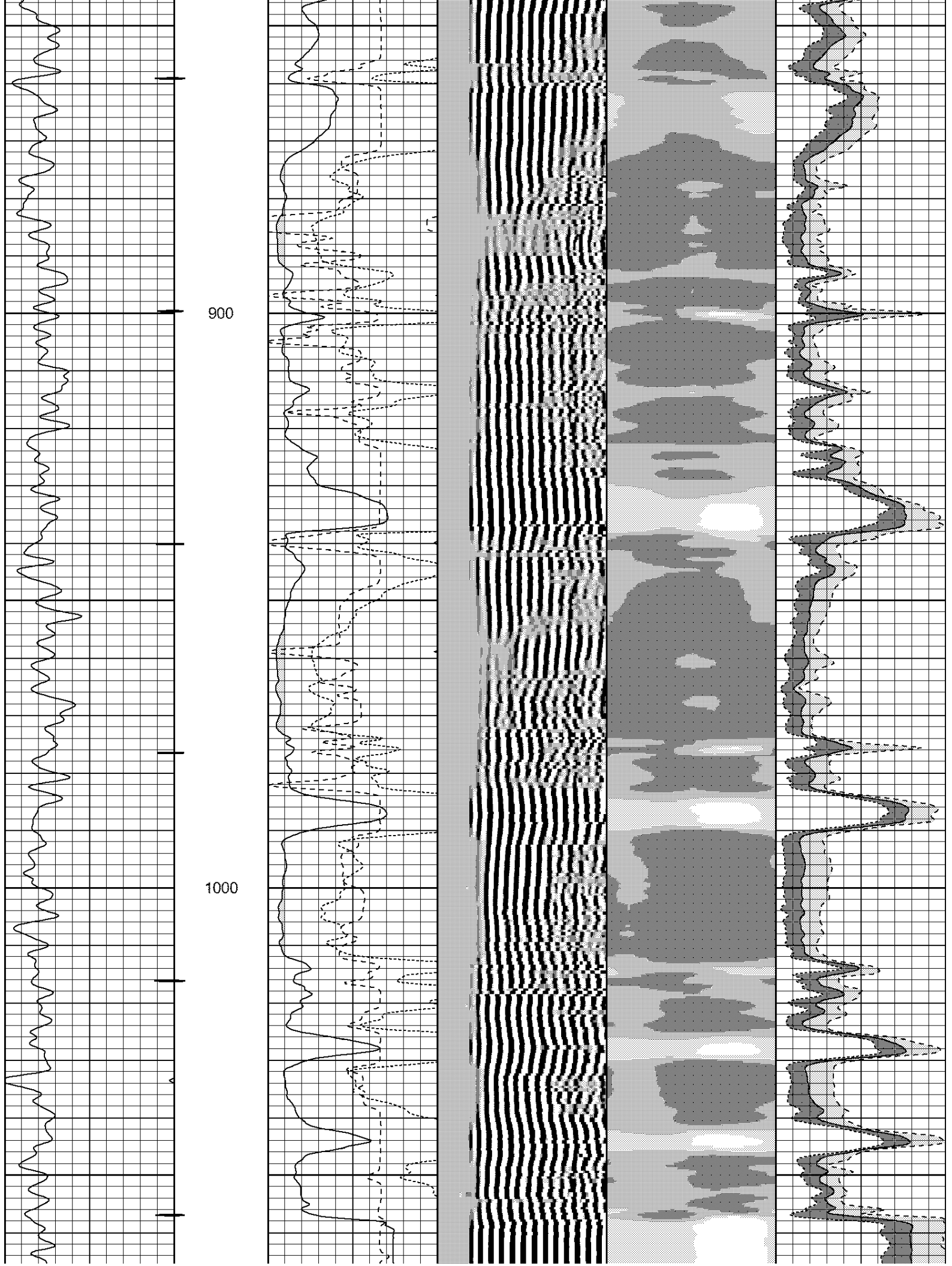






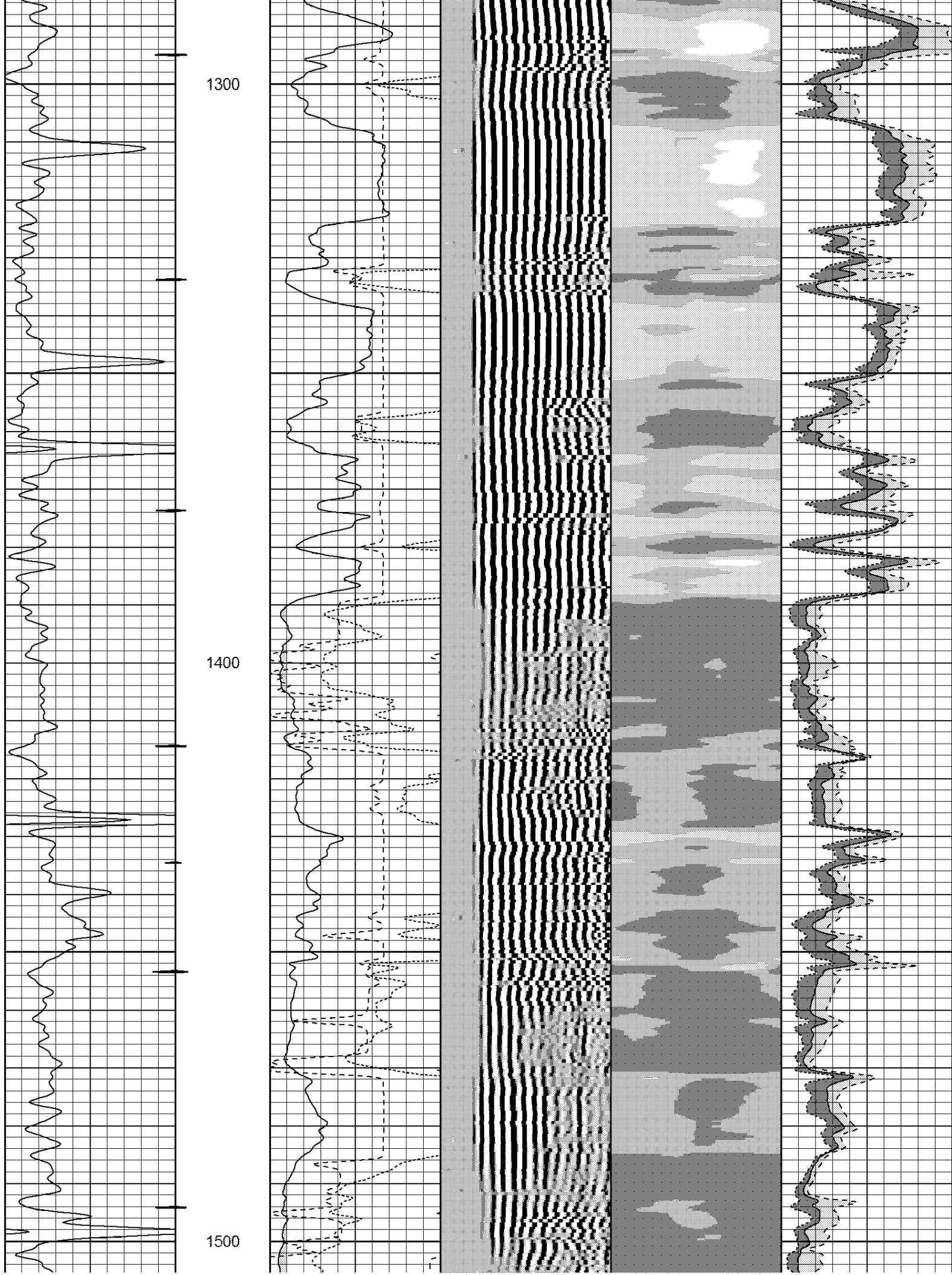


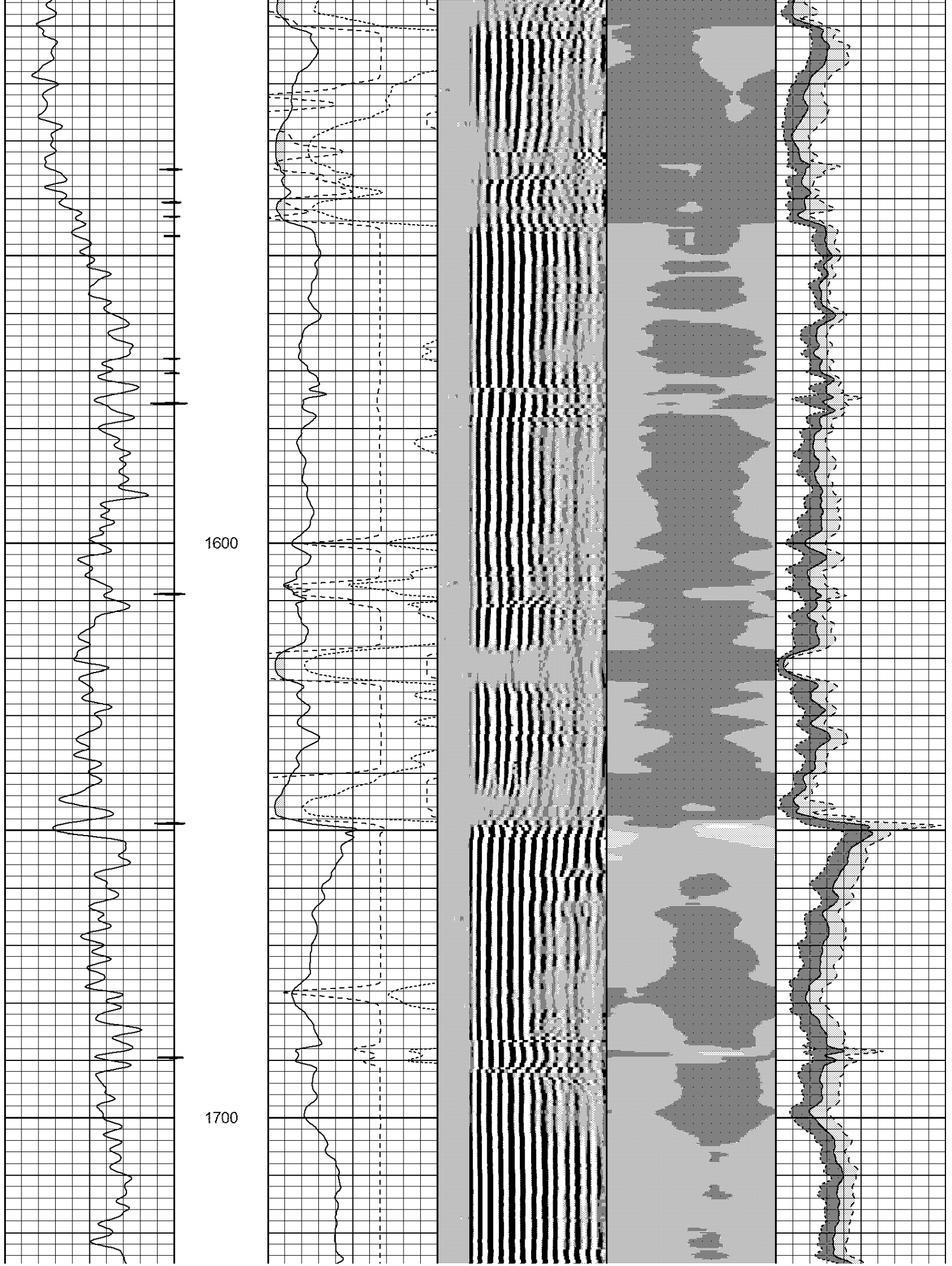


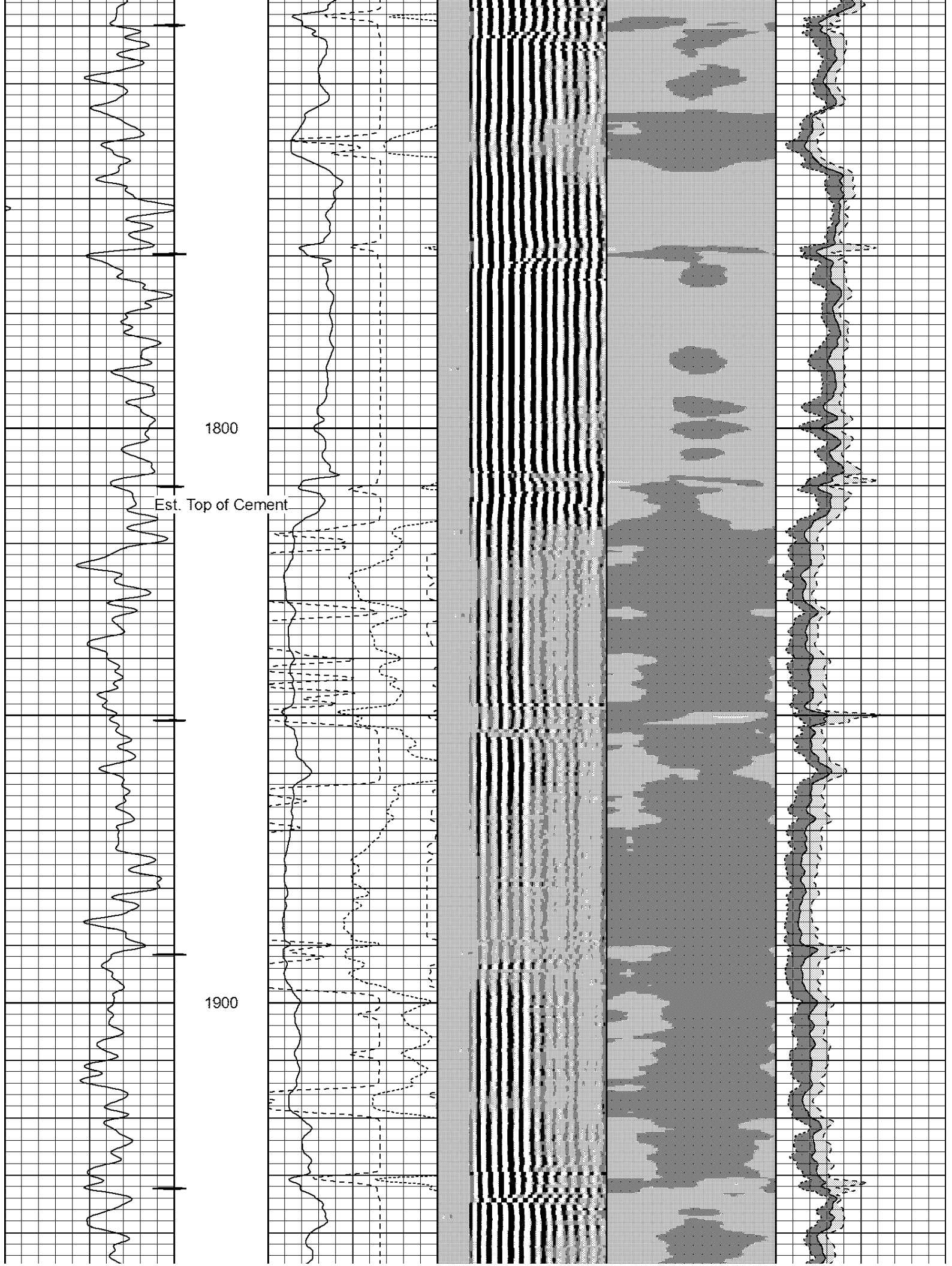


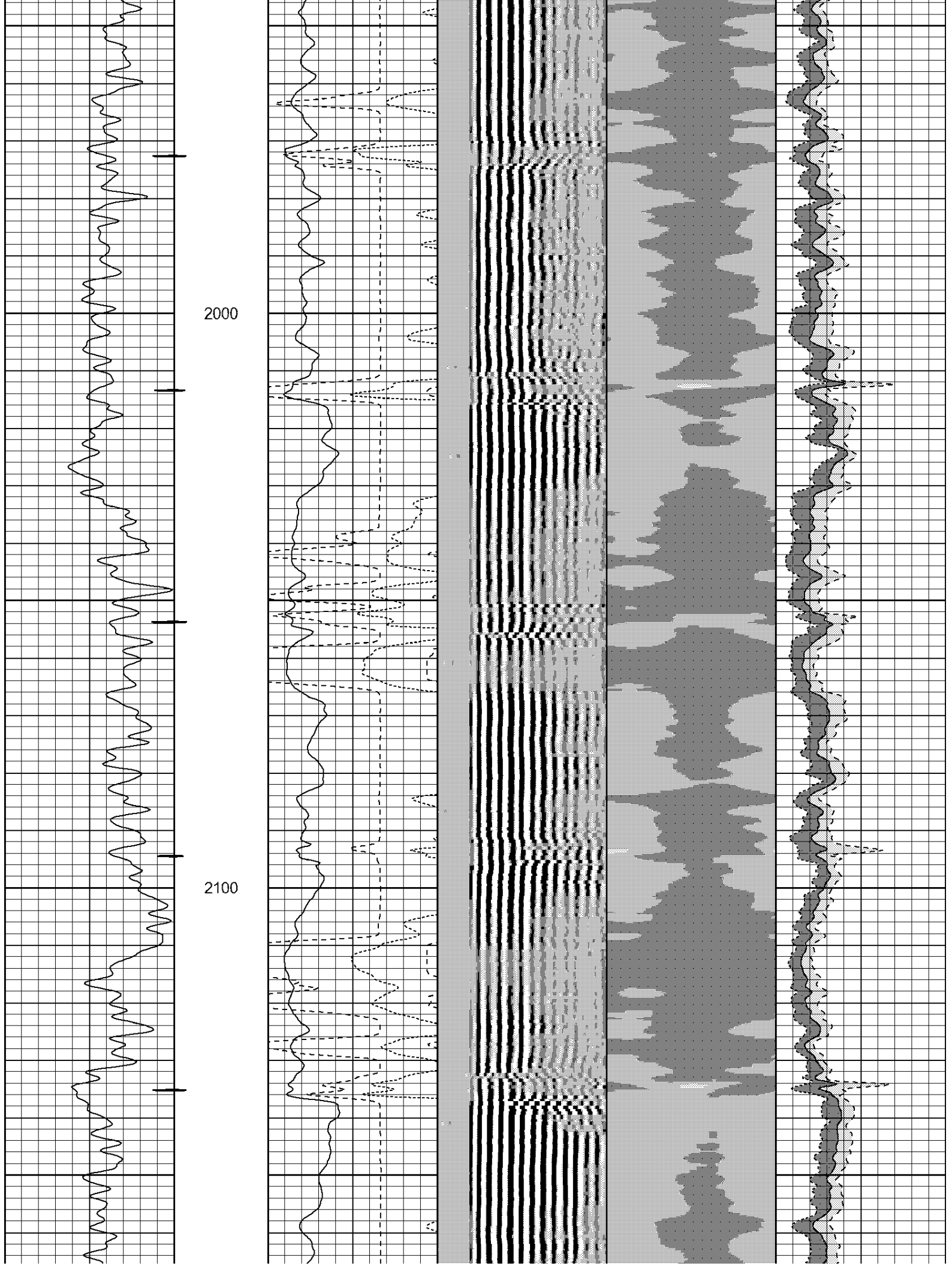




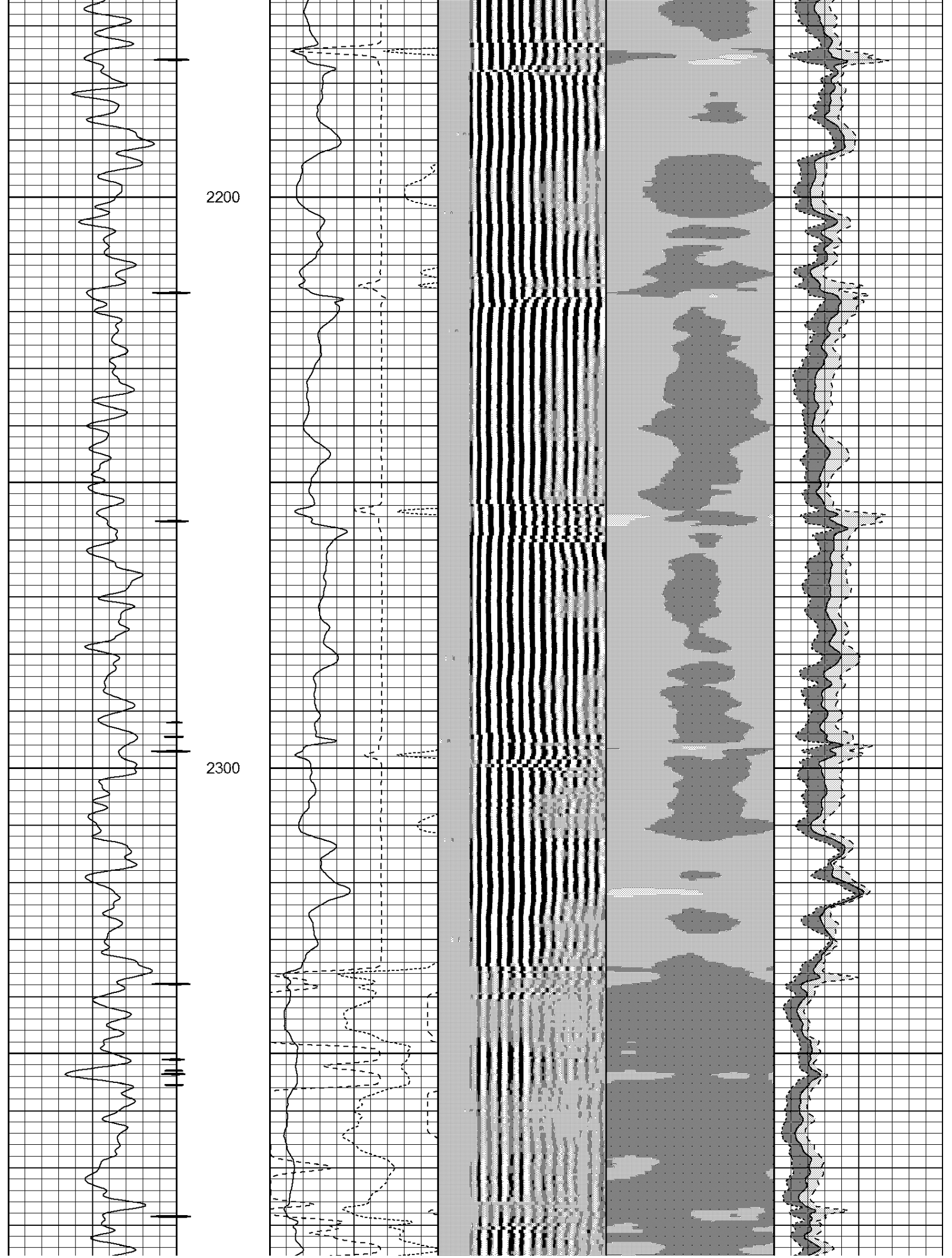




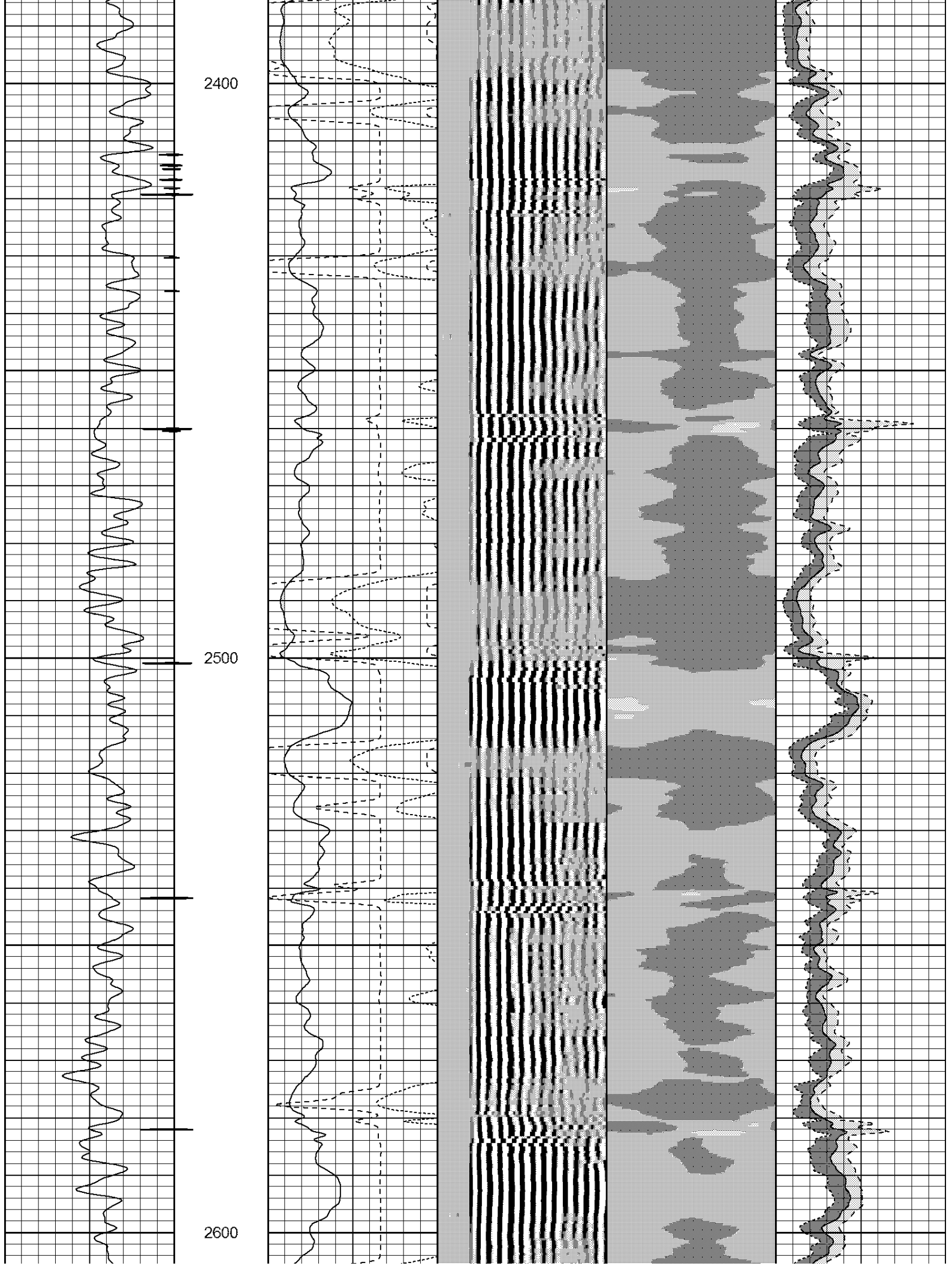


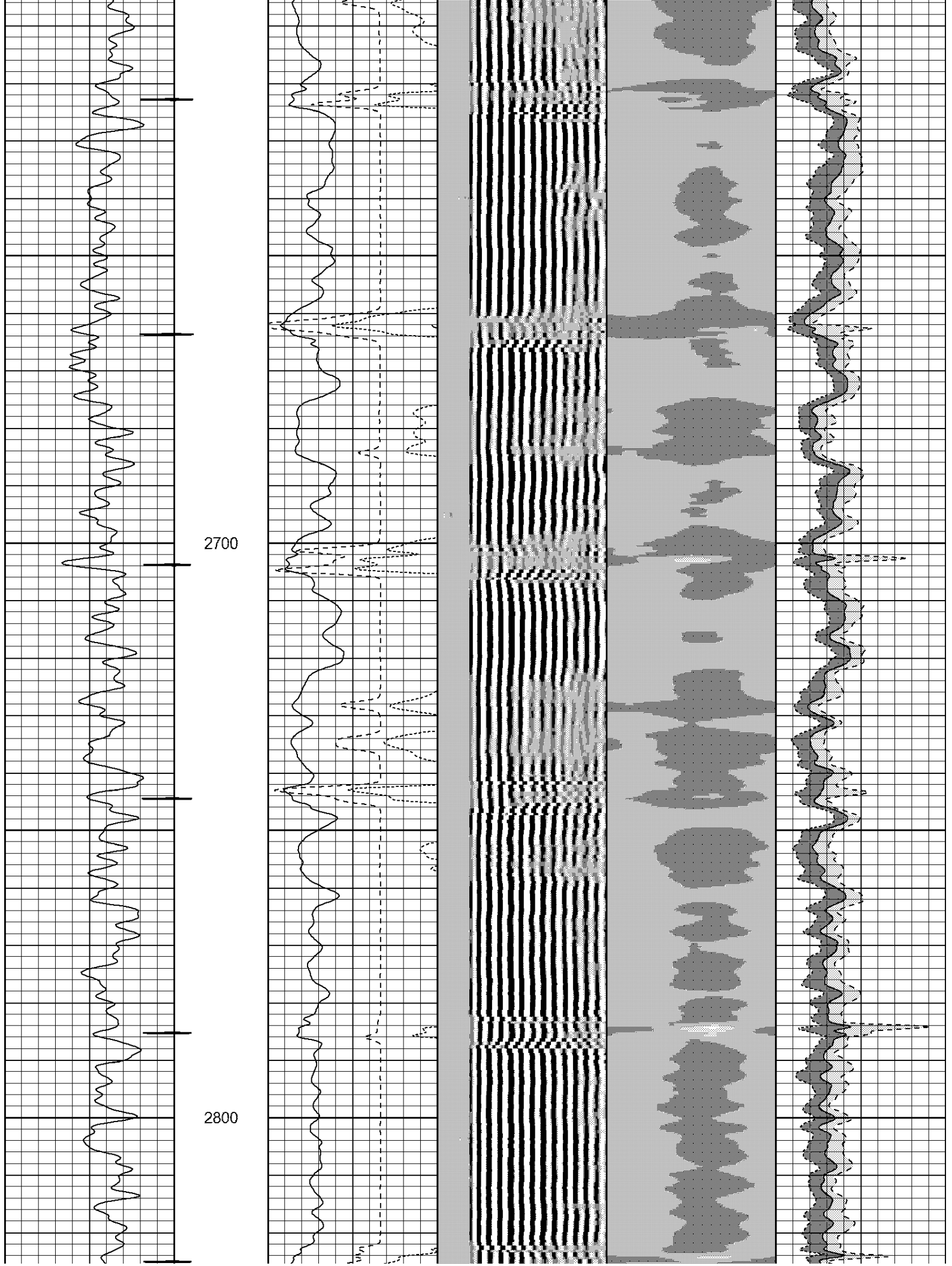


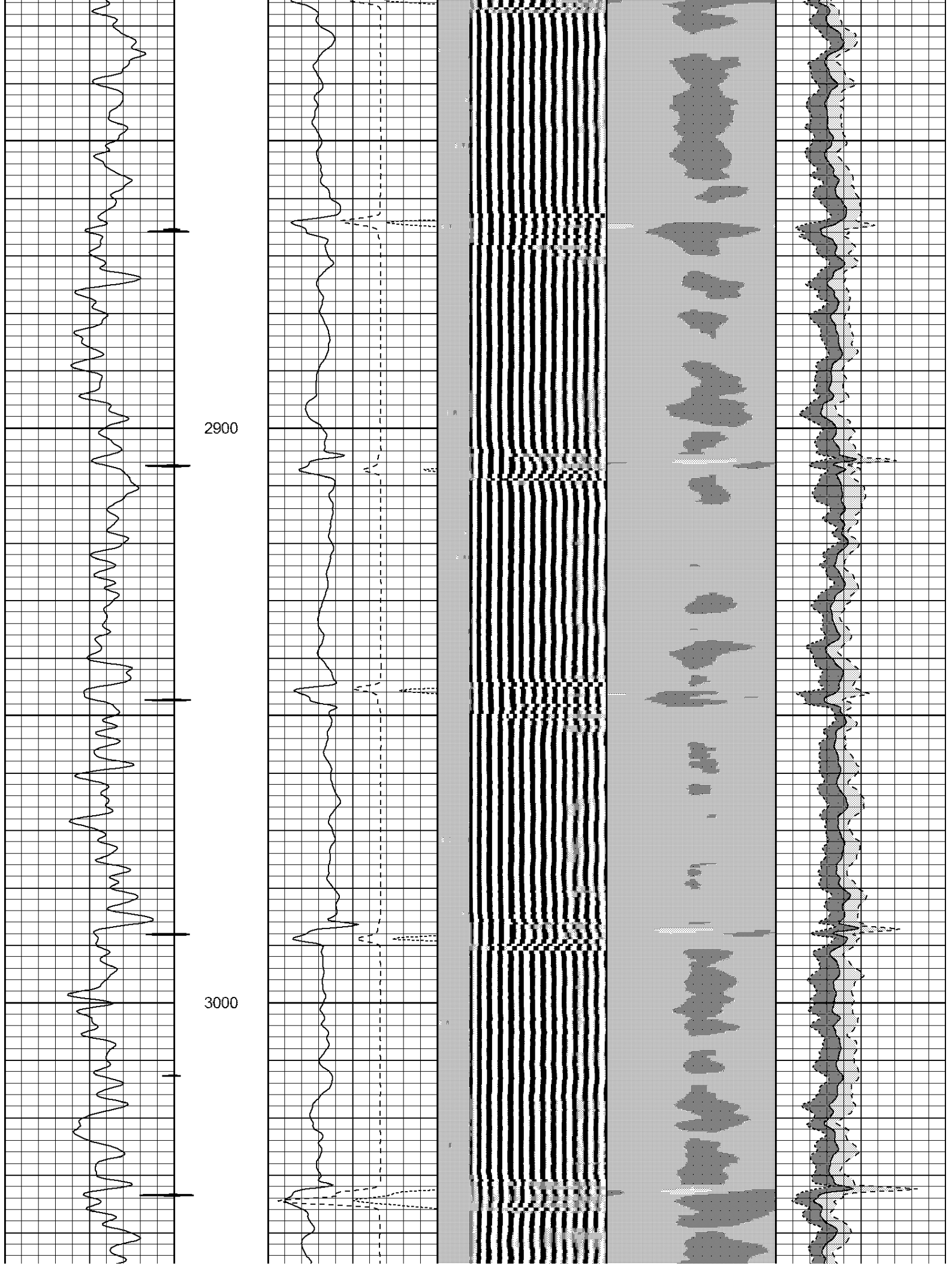


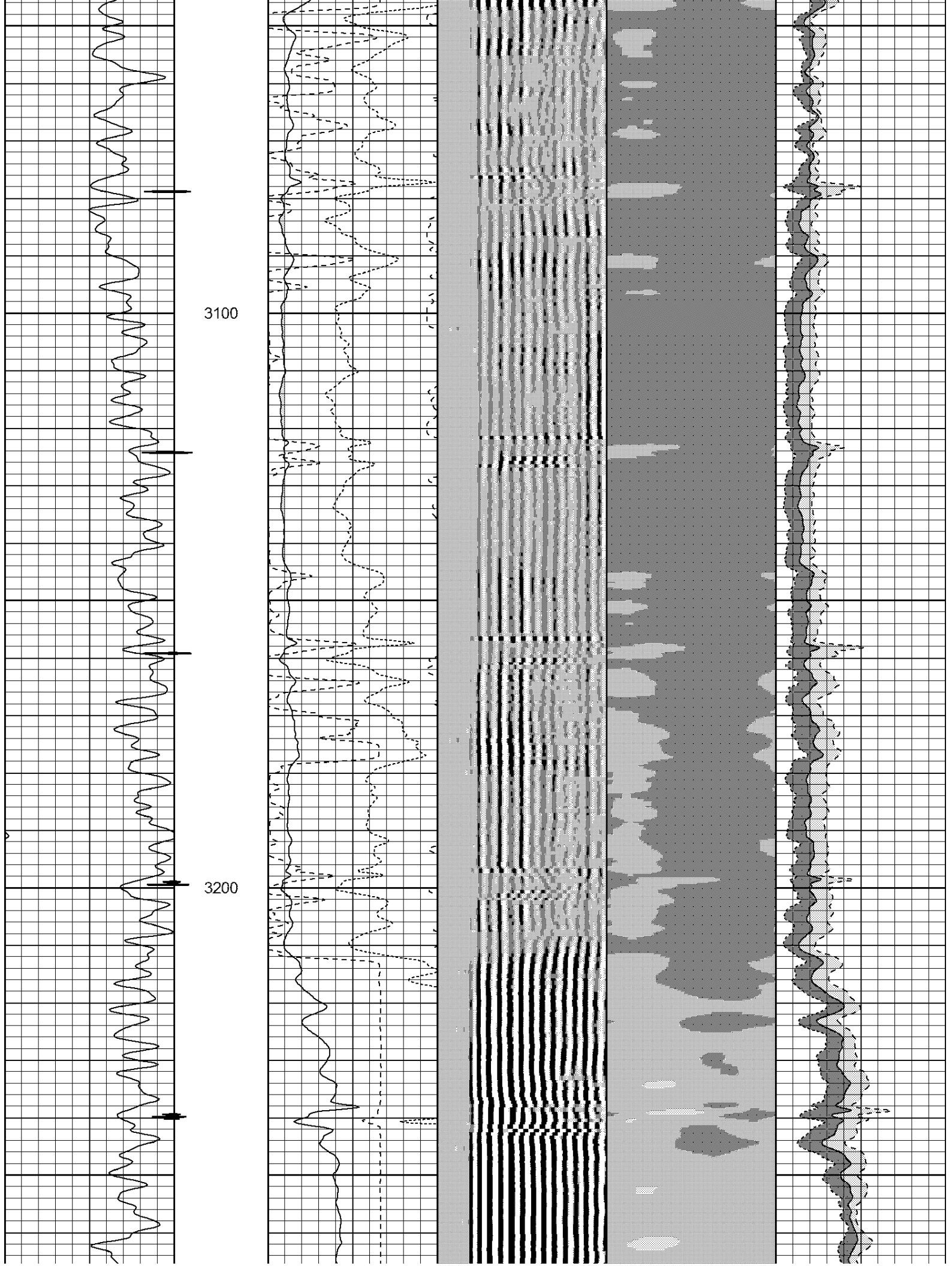








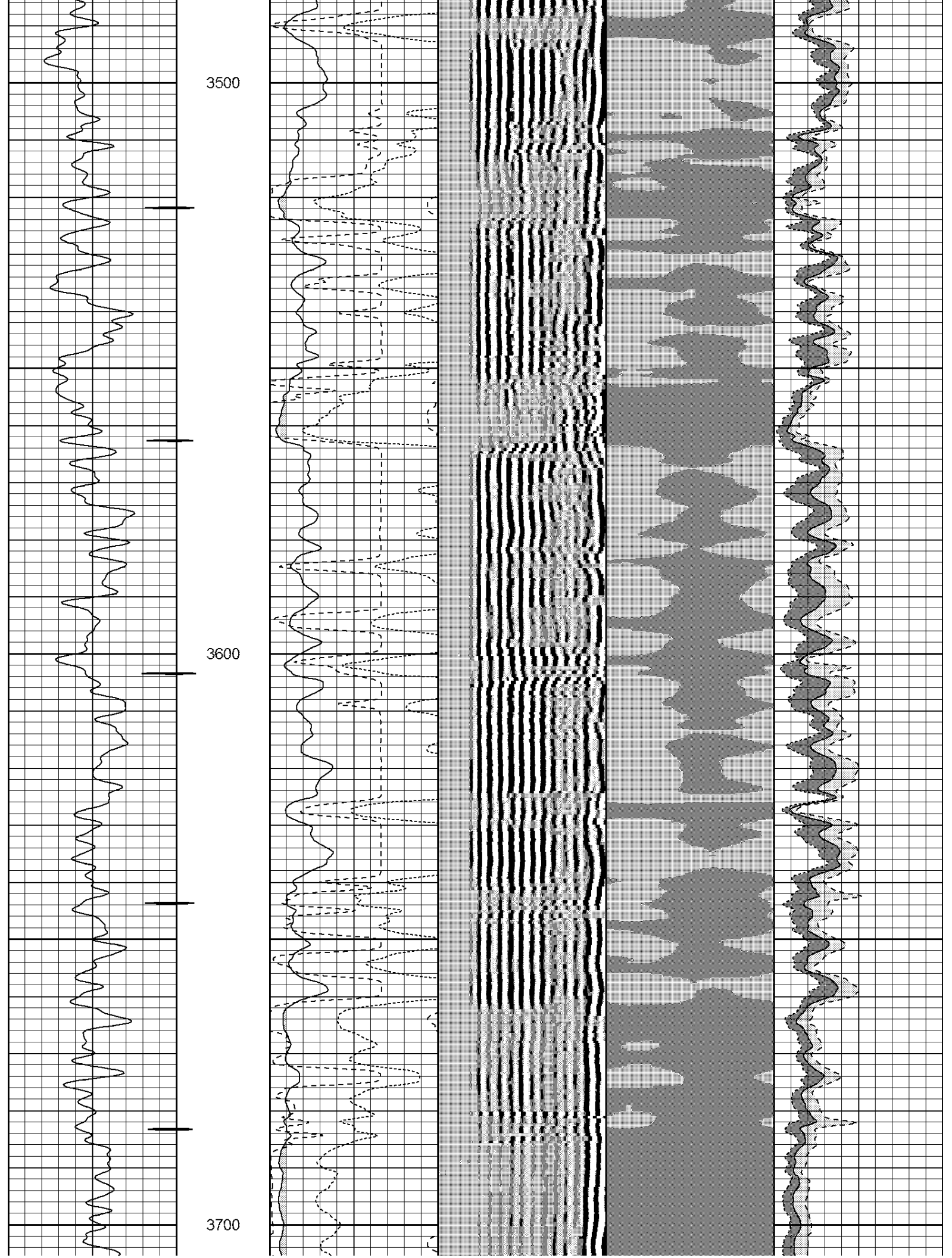


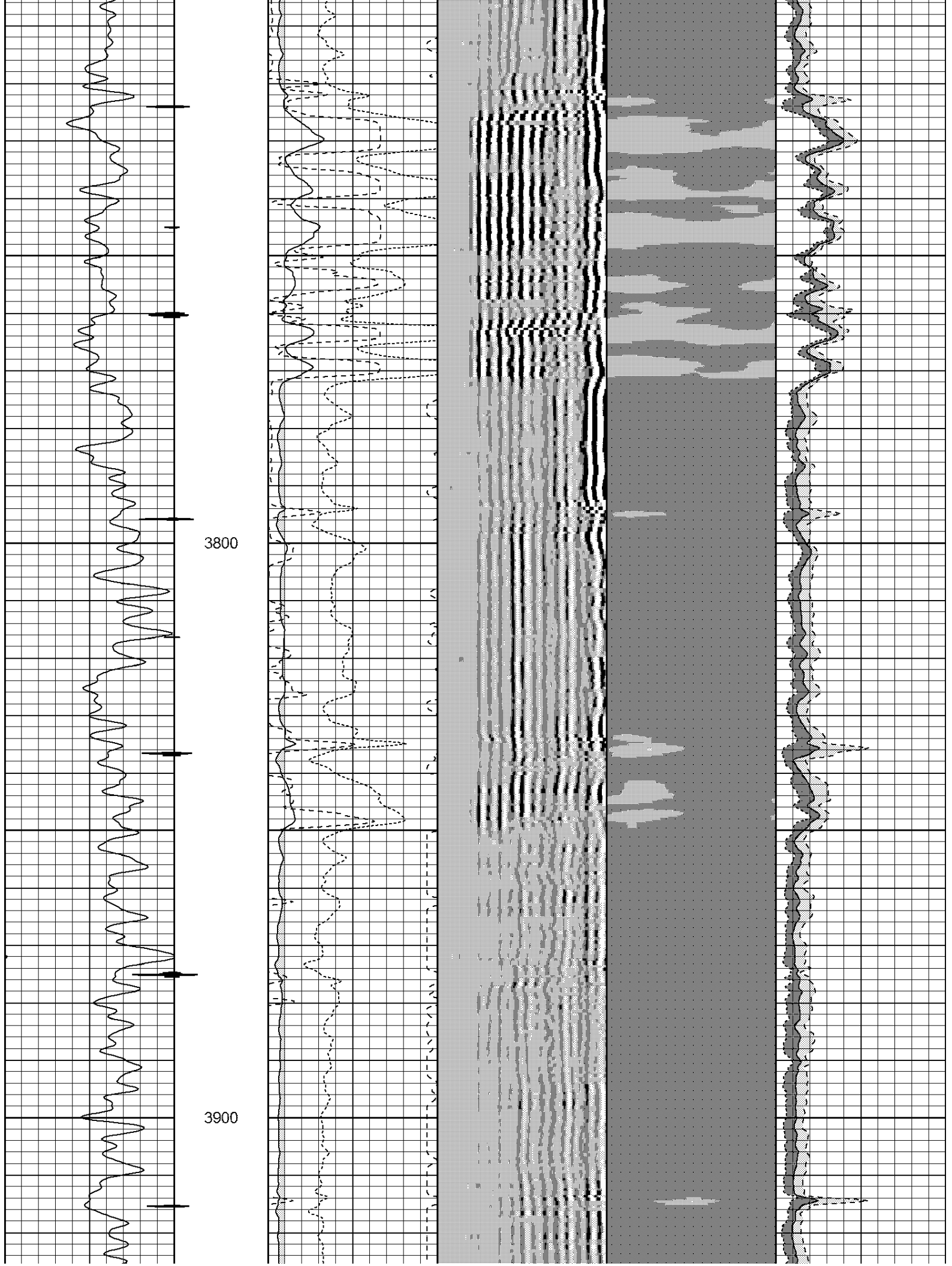


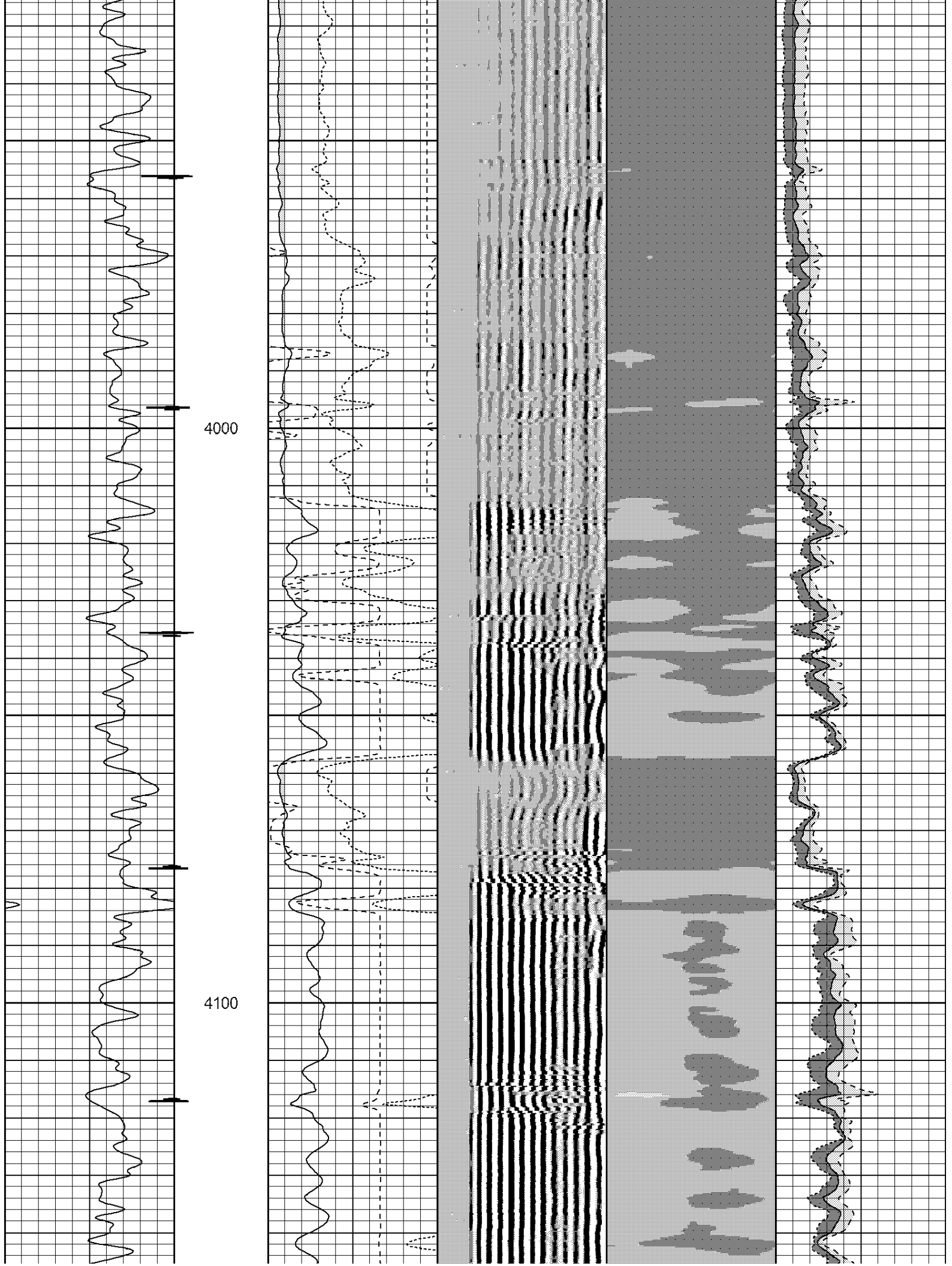


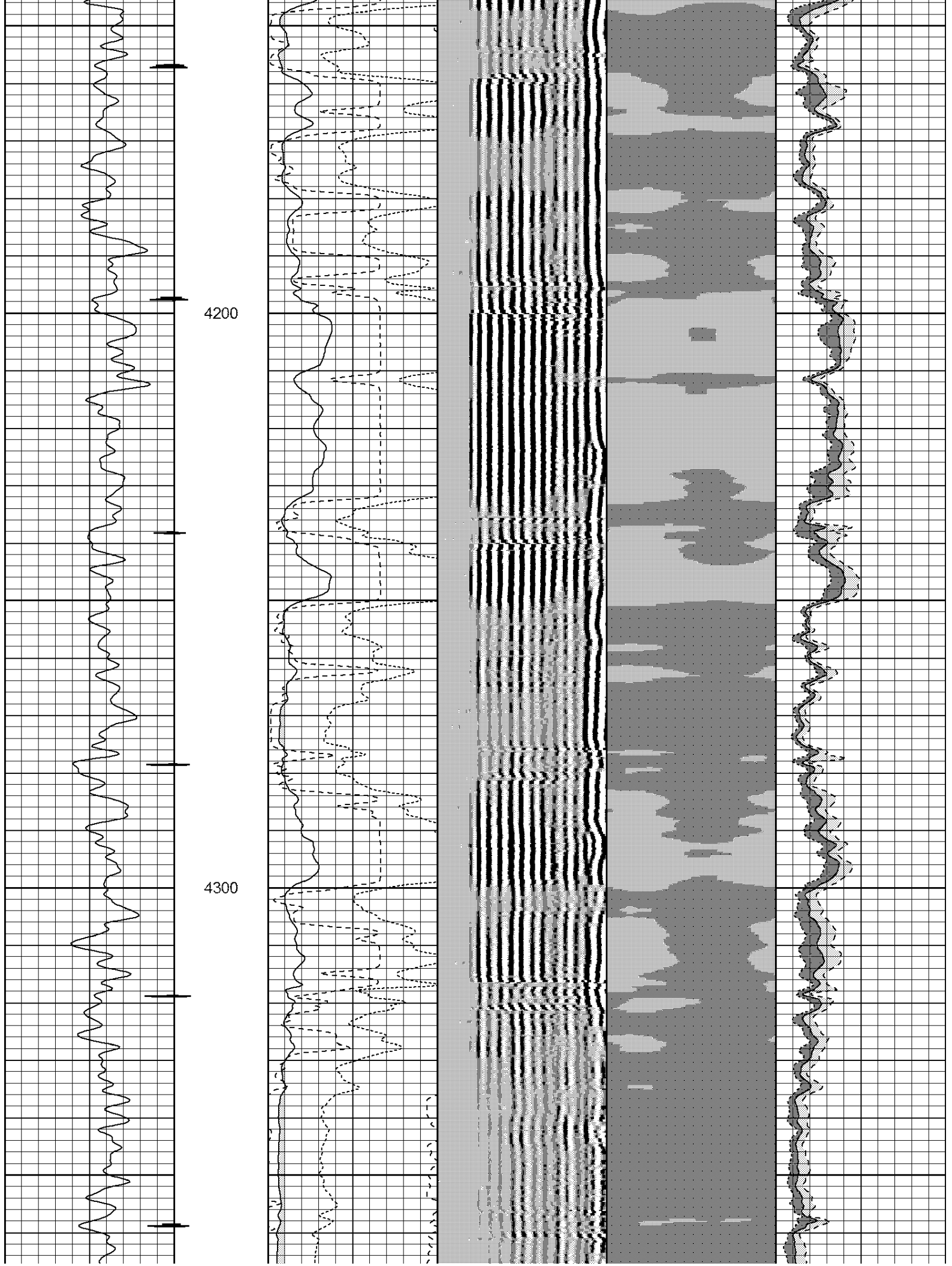








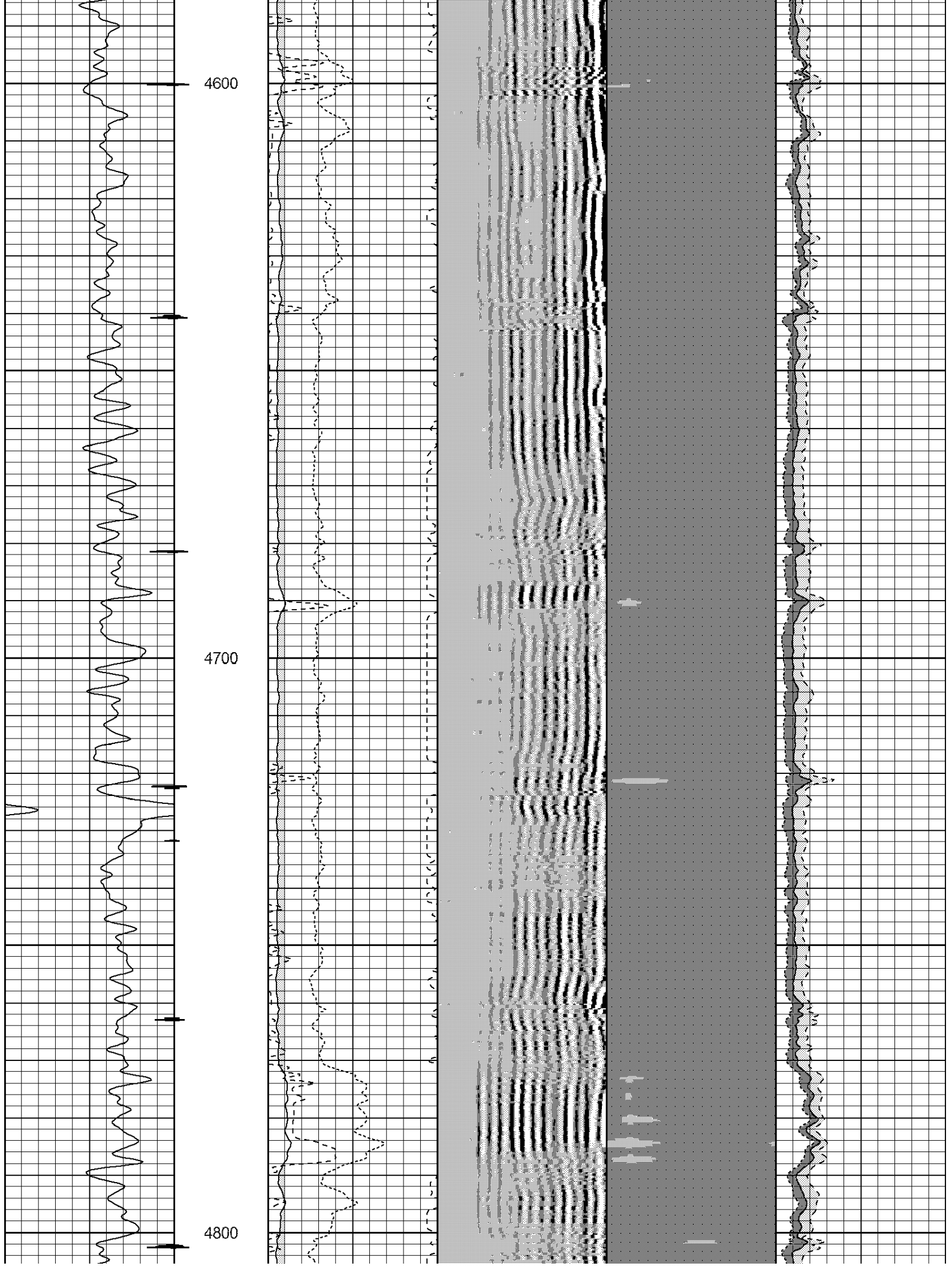


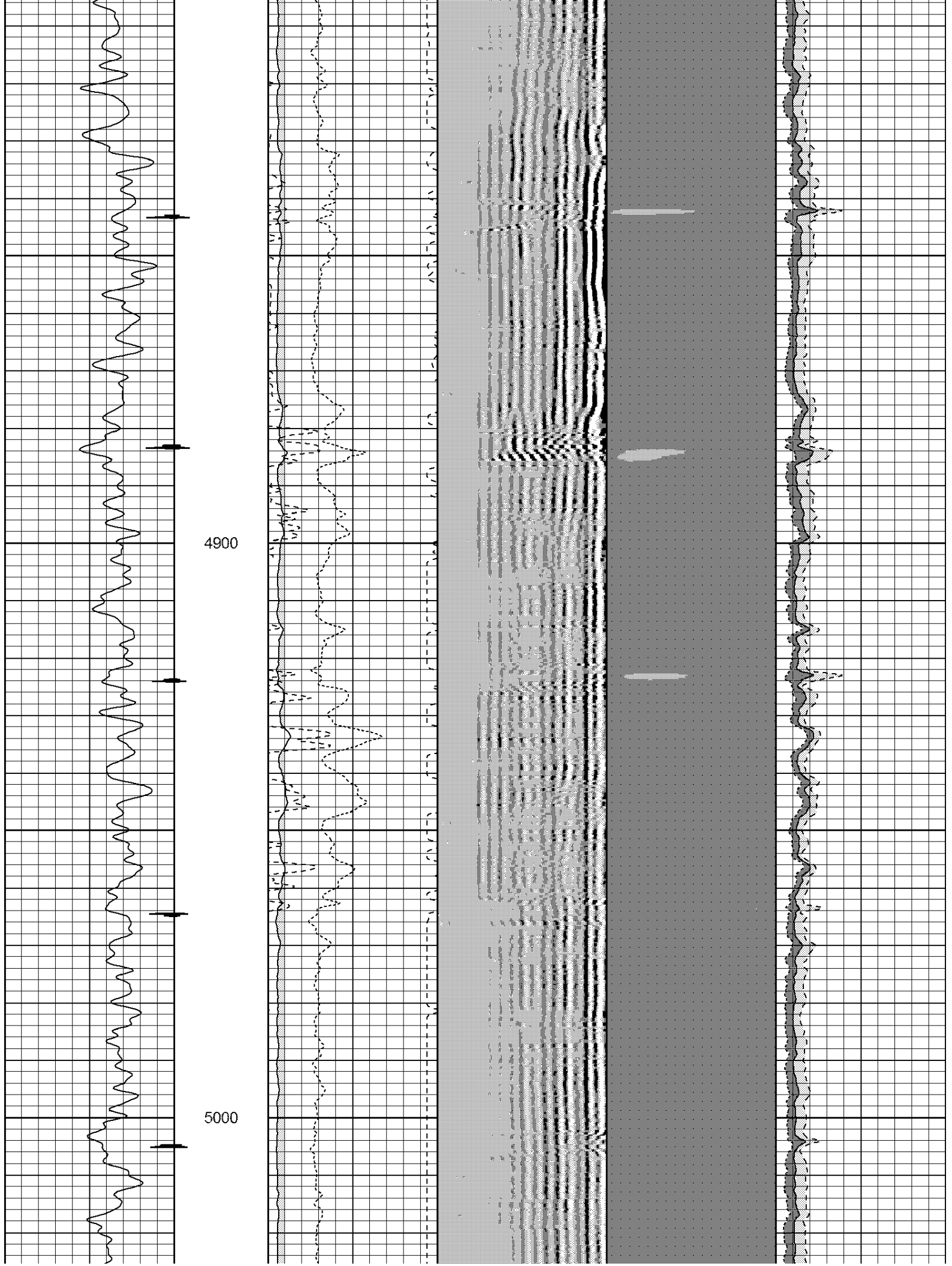


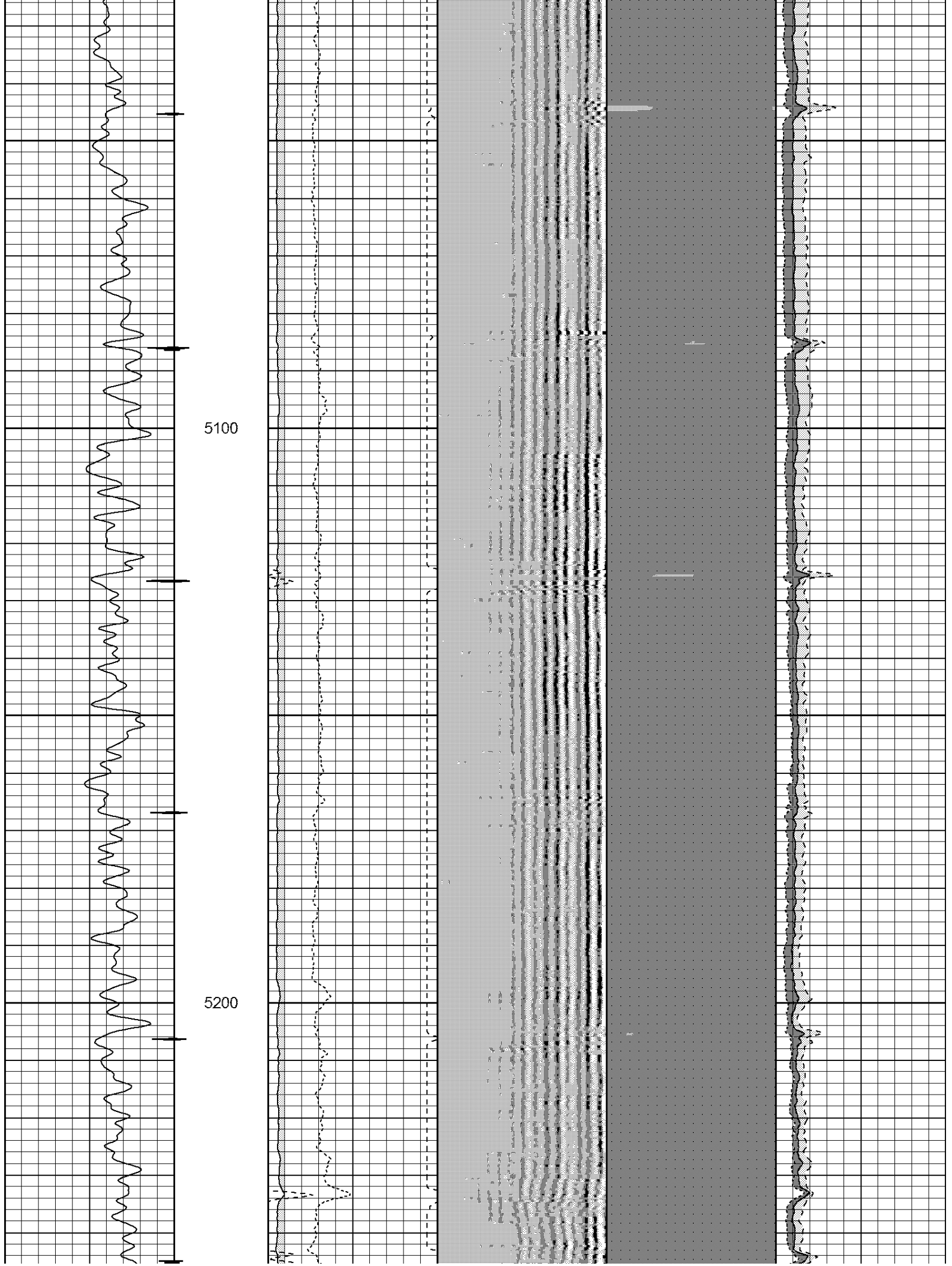


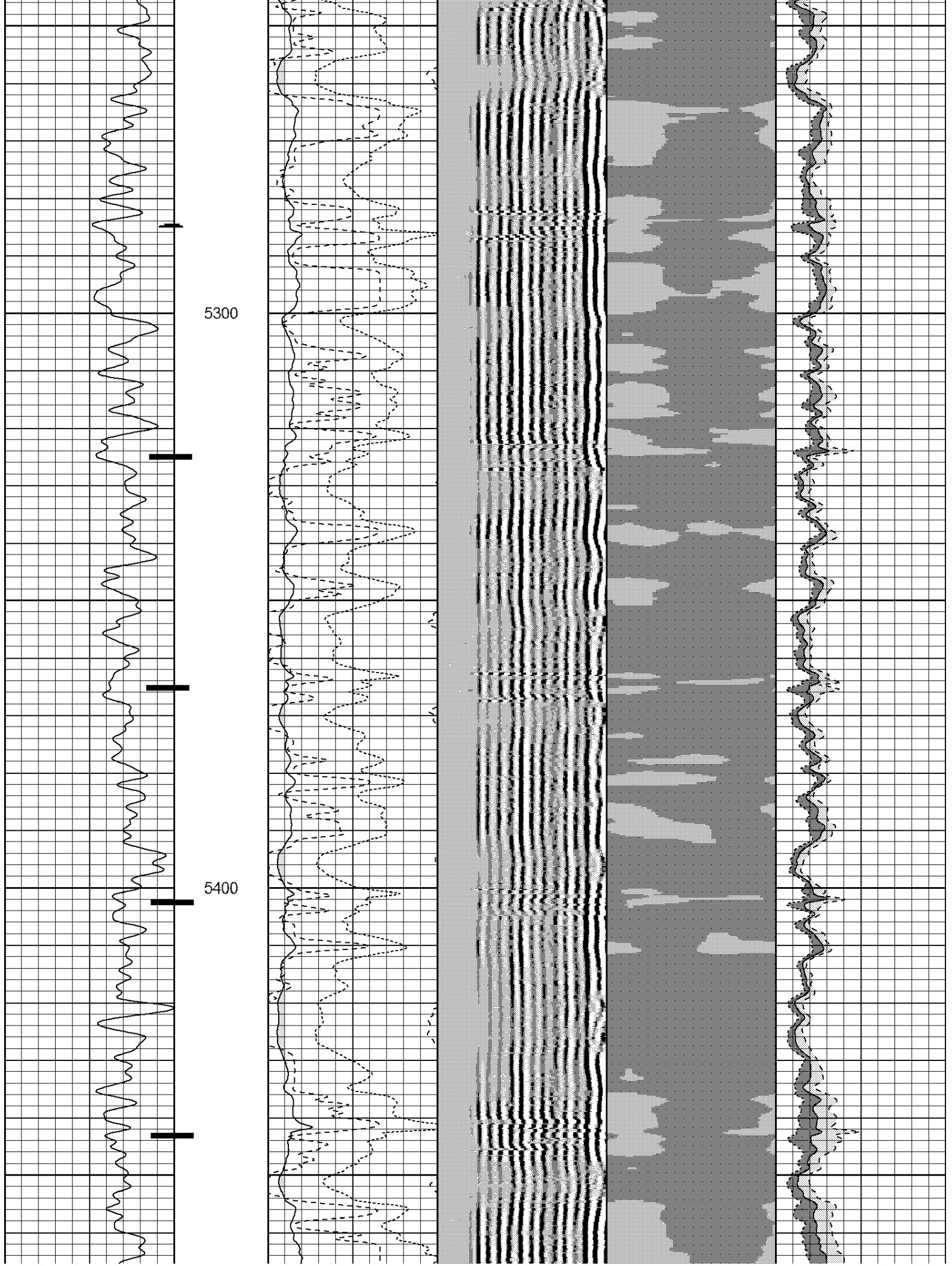




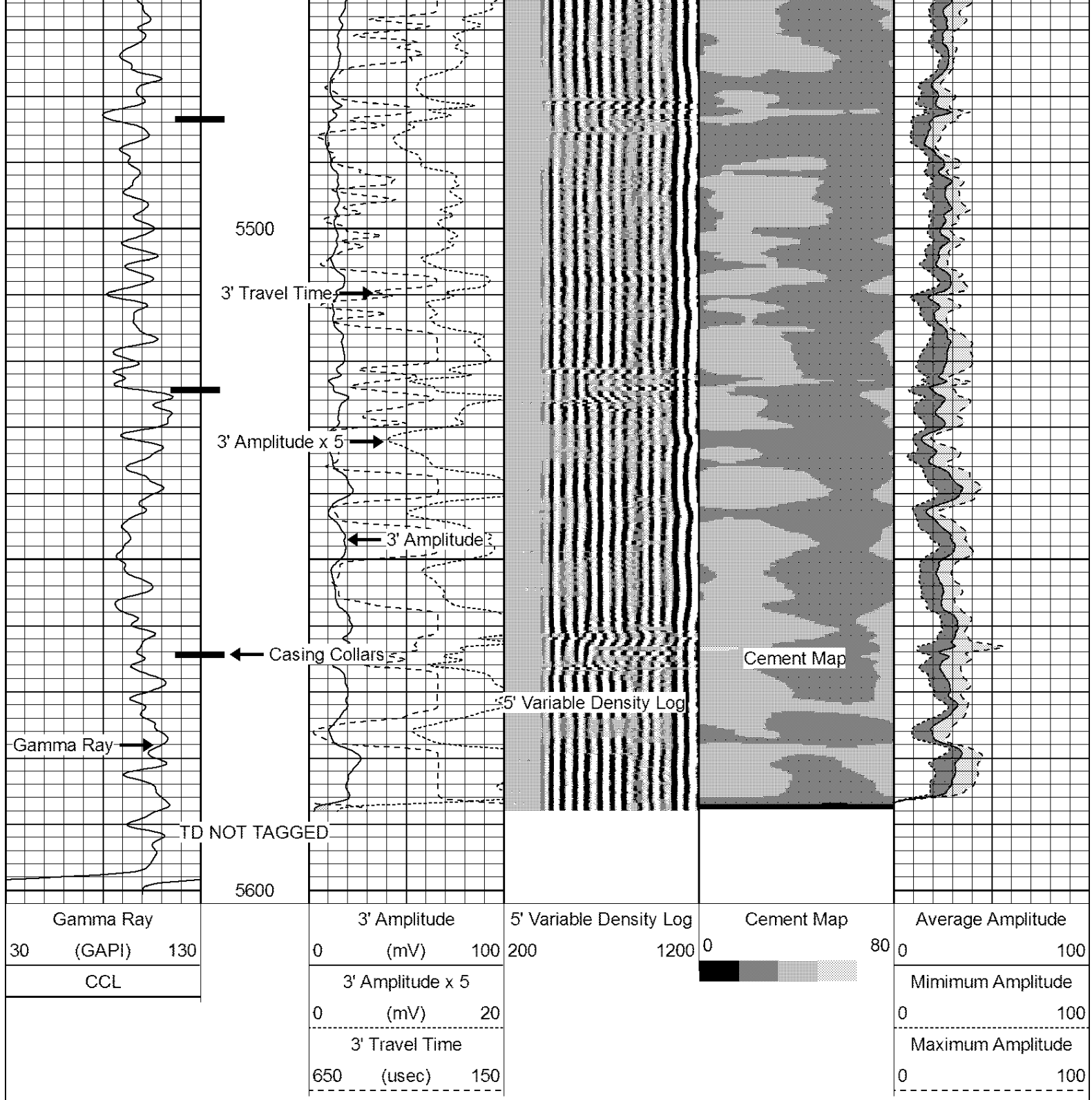












Company WHITING OIL & GAS CORP.  
 Well WOLF 36-3624H  
 Field RED TAIL  
 County WELD  
 State COLORADO

Country USA