

WPX Energy Rocky Mountain LLC

NR 512-3

API #05-045-20524-00

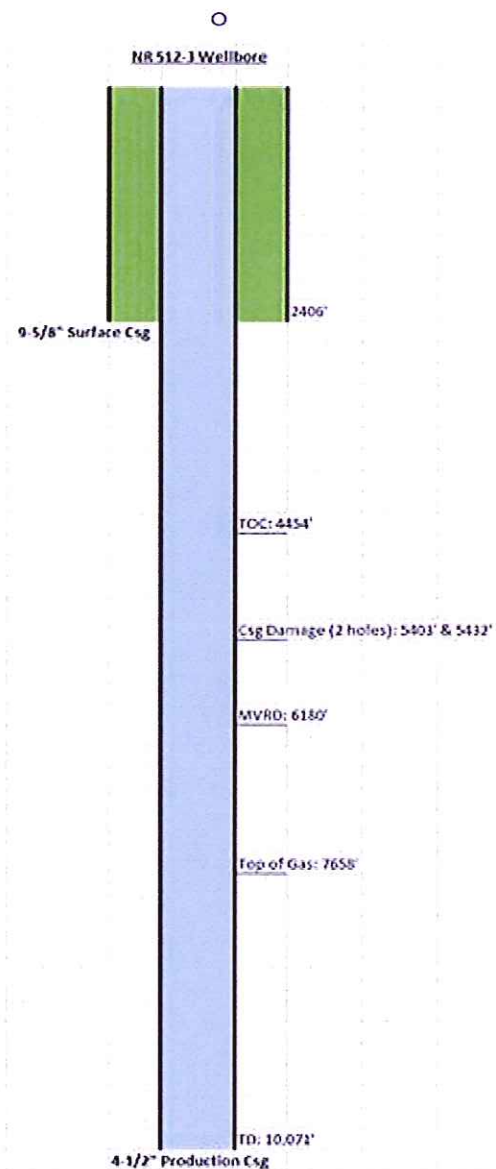
1915' FSL x 1744' FWL - (NESW) - SHL

2784' FNL x 590' FWL - (SWNW) - BHL

Section 3-T6S-R94W

Garfield Co., Colorado

- Wellbore diagram outlining TOC, damage, MVRD, TOG, and TD



Note: Not to scale