

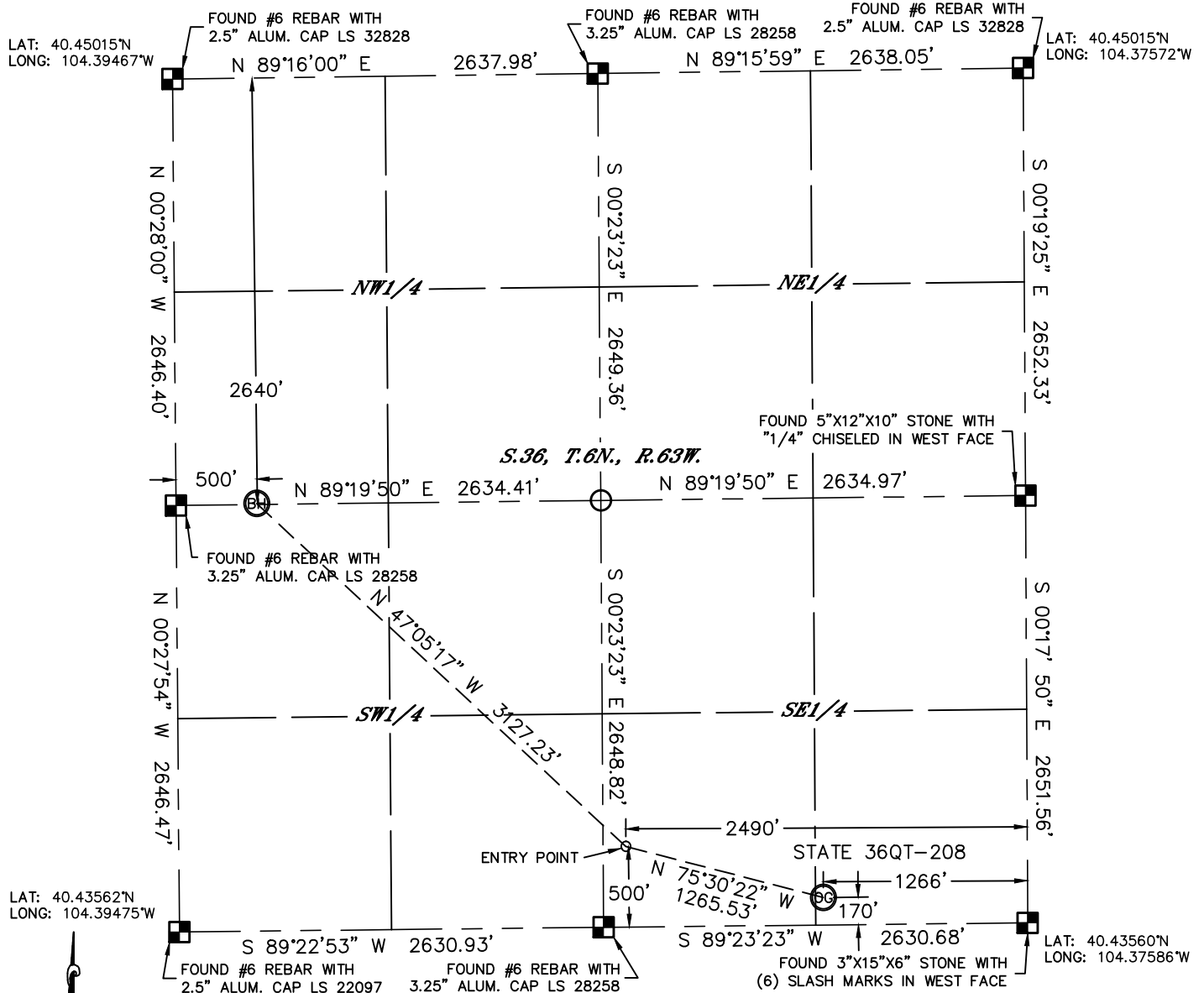


Lat40°, Inc. 1635 Foxtrail Drive, Suite 325 Loveland, CO 970-776-3321

WELL LOCATION CERTIFICATE

SECTION: 36
TOWNSHIP: 6N
RANGE: 63W

THIS MAP DOES NOT REPRESENT A BOUNDARY SURVEY



In accordance with a request from Al Bragg with PDC Energy Lat40°, Inc. has determined the surface location of the STATE 36QT-208 to be 170' from the SOUTH line and 1266' from the EAST line and the bottom hole to be 2640' from the NORTH line and 500' from the WEST line as measured at right angles from the section lines of Section 36, Township 6 North, Range 63 West of the Sixth Principal Meridian, County of Weld, State of Colorado.

I hereby state that this Well Location Certificate was prepared by me, or under my direct supervision, that the fieldwork was completed on 12/8/11, for and on behalf of PDC Energy That this is not a Land Survey Plat or an Improvement Survey Plat, and that it is not to be relied upon for establishment of fence, building, or other future improvement lines.

NOTE:

- 1) Bearings shown are Grid Bearings of the Colorado State Plane Coordinate System, North Zone, North American Datum 1983/2007. The lineal dimensions as contained herein are based upon the "U.S. Survey Foot."
- 2) Ground elevations are based on an observed GPS elevation (NAVD 1988 DATUM).
- 3) IMPROVEMENTS: See LOCATION DRAWING for all visible improvements within 400' of disturbed area.
- 4) SURFACE USE: EX. WELL LOCATION / RANGELAND
- 5) INSTRUMENT OPERATOR: ADAM KELLY

SURFACE LOCATION

LATITUDE: 40.43607°N
LONGITUDE: 104.38040°W
PDOP: 1.4
ELEV: 4714'
1/4, 1/4: SE1/4SE1/4
NEAREST PROPERTY LINE: 170' S

ENTRY POINT

LATITUDE: 40.43698°N
LONGITUDE: 104.38479°W

BOTTOM HOLE

LATITUDE: 40.44291°N
LONGITUDE: 104.39292°W

NOTE

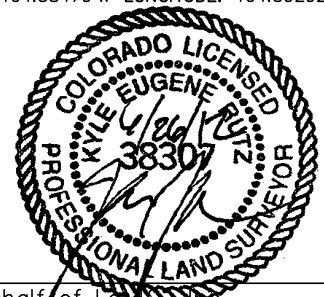
According to Colorado law, you must commence any legal action based upon any defect in this W.L.C. within three years after you discover such defect. In no event, may any action based upon any defect in this survey be commenced more than ten years after the date of the certificate shown hereon. (13-80-105 C.R.S.)

LEGEND

- = ALIQUOT MONUMENT AS DESCRIBED
○ = CALCULATED POSITION

Kyle E. Rutz—On behalf of Lat40°, Inc.
Colorado Licensed Professional
Land Surveyor No. 38307

DATE: rev.6/25/12
PROJECT#: 2011336

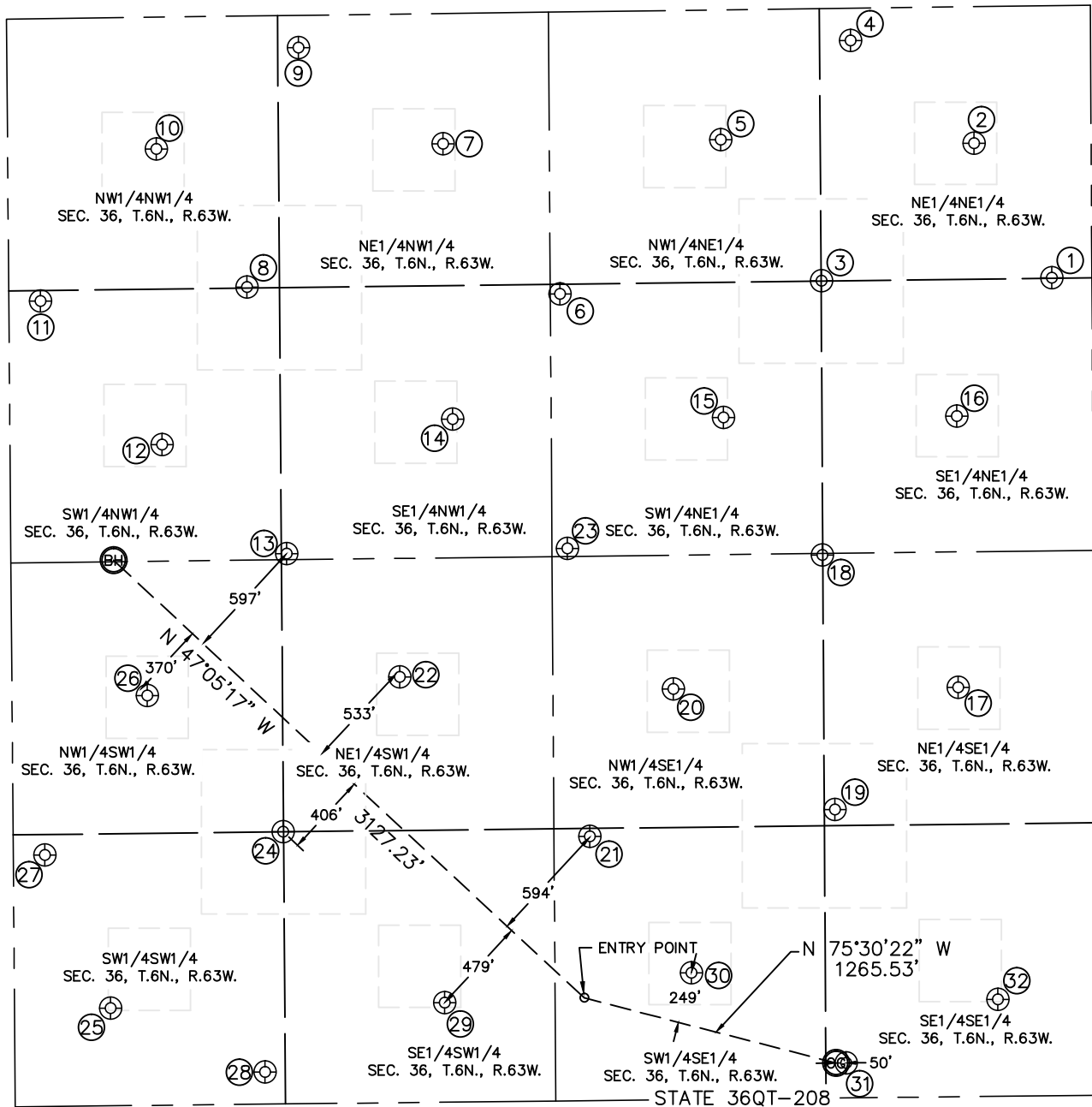




SITE SKETCH

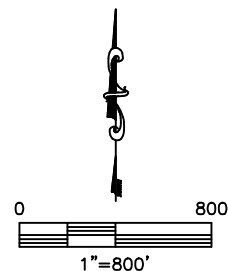
STATE 36QT-208

SECTION: 36
TOWNSHIP: 6N
RANGE: 63W



①
WELLS RANCH 36V
NE1/4NE1/4
1324' FNL
195' FEL
LAT-40.44652°N
LONG-104.37645°W
PDOP:1.7
ELEV: 4695'

②
WELLS RANCH 41-36
NE1/4NE1/4
664' FNL
570' FEL
LAT-40.44833°N
LONG-104.37778°W
PDOP:1.6
ELEV: 4698'





SITE SKETCH

STATEQT-208

SECTION: 36
TOWNSHIP: 6N
RANGE: 63W

③

WELLS RANCH 36C
NE1/4NE1/4
1324' FNL
1316' FEL
LAT-40.44652°N
LONG-104.38048°W
PDOP: 3.1
ELEV: 4706'

④

WELLS RANCH 36R
NE1/4NE1/4
157' FNL
1168' FEL
LAT-40.44972°N
LONG-104.37992°W
PDOP: 3.1
ELEV: 4708'

⑤

WELLS RANCH 31-36
NW1/4NE1/4
632' FNL
1803' FEL
LAT-40.44842°N
LONG-104.38221°W
PDOP: 2.4
ELEV: 4716'

⑥

WELLS RANCH 36N
SW1/4NE1/4
1372' FNL
2590' FEL
LAT-40.44639°N
LONG-104.38506°W
PDOP: 2.5
ELEV: 4733'

⑦

WELLS RANCH 21-36
NE1/4NW1/4
634' FNL
2120' FWL
LAT-40.44841°N
LONG-104.38707°W
PDOP: 2.8
ELEV: 4737'

⑧

WELLS RANCH 36A
NW1/4NW1/4
1319' FNL
1159' FWL
LAT-40.44653°N
LONG-104.39053°W
PDOP: 2.7
ELEV: 4789'

⑨

WELLS RANCH 36J
NE1/4NW1/4
157' FNL
1420' FWL
LAT-40.44972°N
LONG-104.38957°W
PDOP: 3.9
ELEV: 4765'

⑩

WELLS RANCH 11-36
NW1/4NW1/4
642' FNL
724' FWL
LAT-40.44839°N
LONG-104.39208°W
PDOP: 4.8
ELEV: 4795'

⑪

WELLS RANCH 36F
SW1/4NW1/4
1375' FNL
154' FWL
LAT-40.44638°N
LONG-104.39414°W
PDOP: 3.1
ELEV: 4797'

⑫

WELLS RANCH 12-36
SW1/4NW1/4
2081' FNL
740' FWL
LAT-40.44444°N
LONG-104.39205°W
PDOP: 2.2
ELEV: 4791'

⑬

WELLS RANCH 36K
SE1/4NW1/4
2619' FNL
1343' FWL
LAT-40.44296°N
LONG-104.38989°W
PDOP: 2.5
ELEV: 4779'

⑭

WELLS RANCH 22-36
SE1/4NW1/4
1974' FNL
2155' FWL
LAT-40.44473°N
LONG-104.38696°W
PDOP: 2.3
ELEV: 4754'

⑮

WELLS RANCH 32-36
SW1/4NE1/4
1983' FNL
1797' FEL
LAT-40.44471°N
LONG-104.38222°W
PDOP: 4.3
ELEV: 4721'

⑯

WELLS RANCH 42-36
SE1/4NE1/4
1991' FNL
662' FEL
LAT-40.44469°N
LONG-104.37815°W
PDOP: 3.0
ELEV: 4702'

⑰

WELLS RANCH 43-36
NE1/4SE1/4
1991' FSL
662' FEL
LAT-40.44107°N
LONG-104.37818°W
PDOP: 1.4
ELEV: 4695'

⑱

WELLS RANCH 36S
NE1/4SE1/4
2642' FSL
1320' FEL
LAT-40.44286°N
LONG-104.38053°W
PDOP: 2.0
ELEV: 4705'

⑲

WELLS RANCH 36D
NE1/4SE1/4
1403' FSL
1266' FEL
LAT-40.43946°N
LONG-104.38037°W
PDOP: 2.5
ELEV: 4715'

⑳

WELLS RANCH 33-36
NW1/4SE1/4
1999' FSL
2049' FEL
LAT-40.44109°N
LONG-104.38316°W
PDOP: 1.8
ELEV: 4726'

㉑

WELLS RANCH 36P
SW1/4SE1/4
1285' FSL
2458' FEL
LAT-40.43914°N
LONG-104.38465°W
PDOP: 2.1
ELEV: 4731'

㉒

WELLS RANCH 23-36
NE1/4SW1/4
2072' FSL
1888' FWL
LAT-40.44130°N
LONG-104.38794°W
PDOP: 2.4
ELEV: 4775'

㉓

WELLS RANCH 36O
SW1/4NE1/4
2610' FNL
2561' FEL
LAT-40.44299°N
LONG-104.38498°W
PDOP: 1.8
ELEV: 4731'

㉔

WELLS RANCH 36B
NW1/4SW1/4
1324' FSL
1314' FWL
LAT-40.43925°N
LONG-104.39001°W
PDOP: 1.4
ELEV: 4776'

㉕

WELLS RANCH 14-36
SW1/4SW1/4
475' FSL
468' FWL
LAT-40.43692°N
LONG-104.39307°W
PDOP: 1.7
ELEV: 4742'

㉖

WELLS RANCH 13-36
NW1/4SW1/4
1994' FSL
659' FWL
LAT-40.44109°N
LONG-104.39236°W
PDOP: 1.9
ELEV: 4776'

㉗

WELLS RANCH 36H
SW1/4SW1/4
1224' FSL
154' FWL
LAT-40.43898°N
LONG-104.39418°W
PDOP: 1.9
ELEV: 4749'

㉘

WELLS RANCH 36L
SW1/4SW1/4
156' FSL
1216' FWL
LAT-40.43605°N
LONG-104.39038°W
PDOP: 1.4
ELEV: 4744'

㉙

WELLS RANCH 24-36
SE1/4SW1/4
484' FSL
2094' FWL
LAT-40.43694°N
LONG-104.38723°W
PDOP: 1.3
ELEV: 4741'

㉚

WELLS RANCH 34-36
SW1/4SE1/4
617' FSL
1968' FEL
LAT-40.43730°N
LONG-104.38291°W
PDOP: 1.3
ELEV: 4722'

㉛

WELLS RANCH 36T
SE1/4SE1/4
170' FSL
1216' FEL
LAT-40.43607°N
LONG-104.38022°W
PDOP: 1.3
ELEV: 4714'

㉜

WELLS RANCH 44-36
SE1/4SE1/4
472' FSL
476' FEL
LAT-40.43689°N
LONG-104.37755°W
PDOP: 1.3
ELEV: 4705'