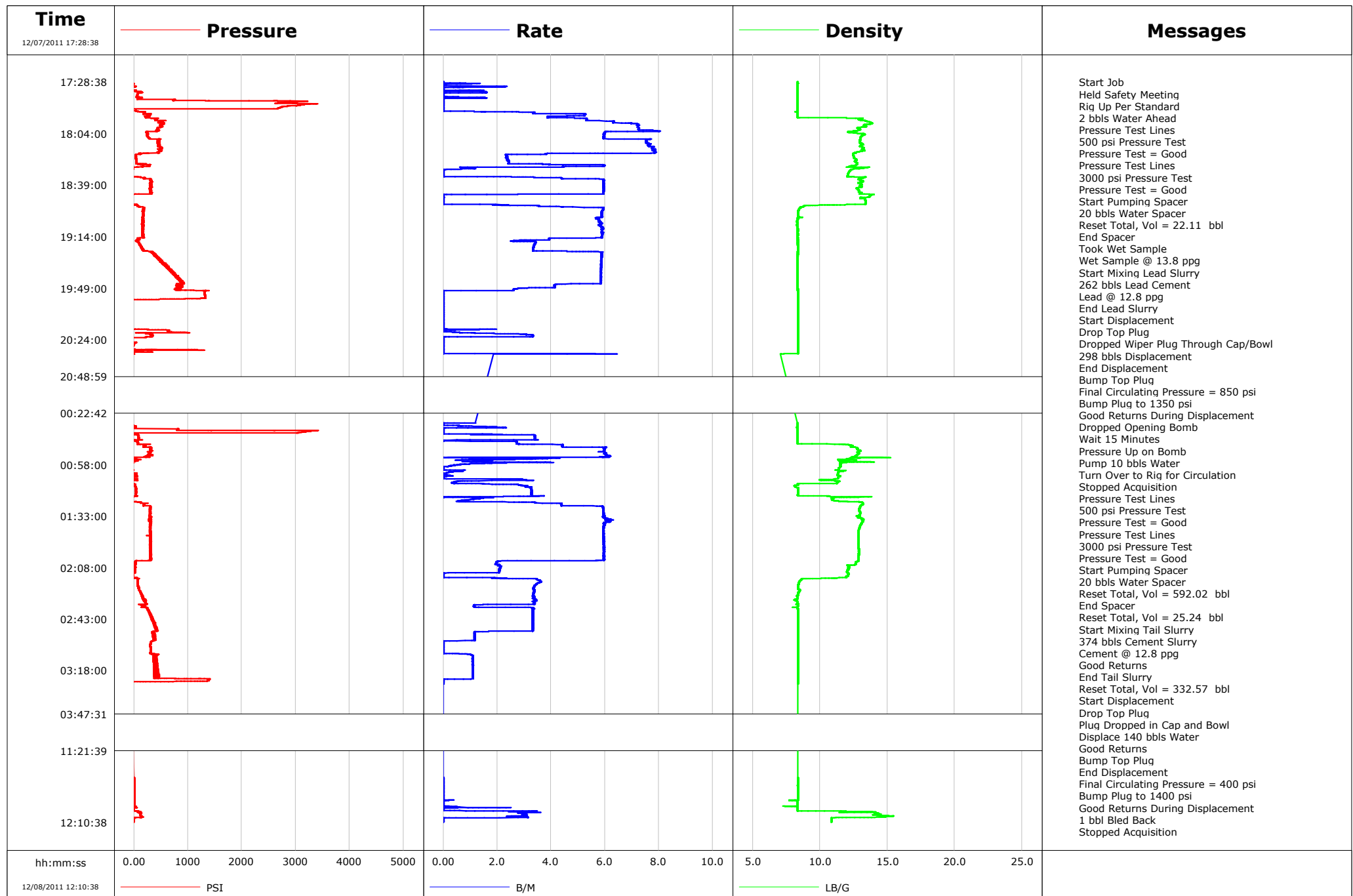


Well RGU 11-36-198
Field Ryan Gulch Unit
Engineer Ryan Bowditch
Country United States

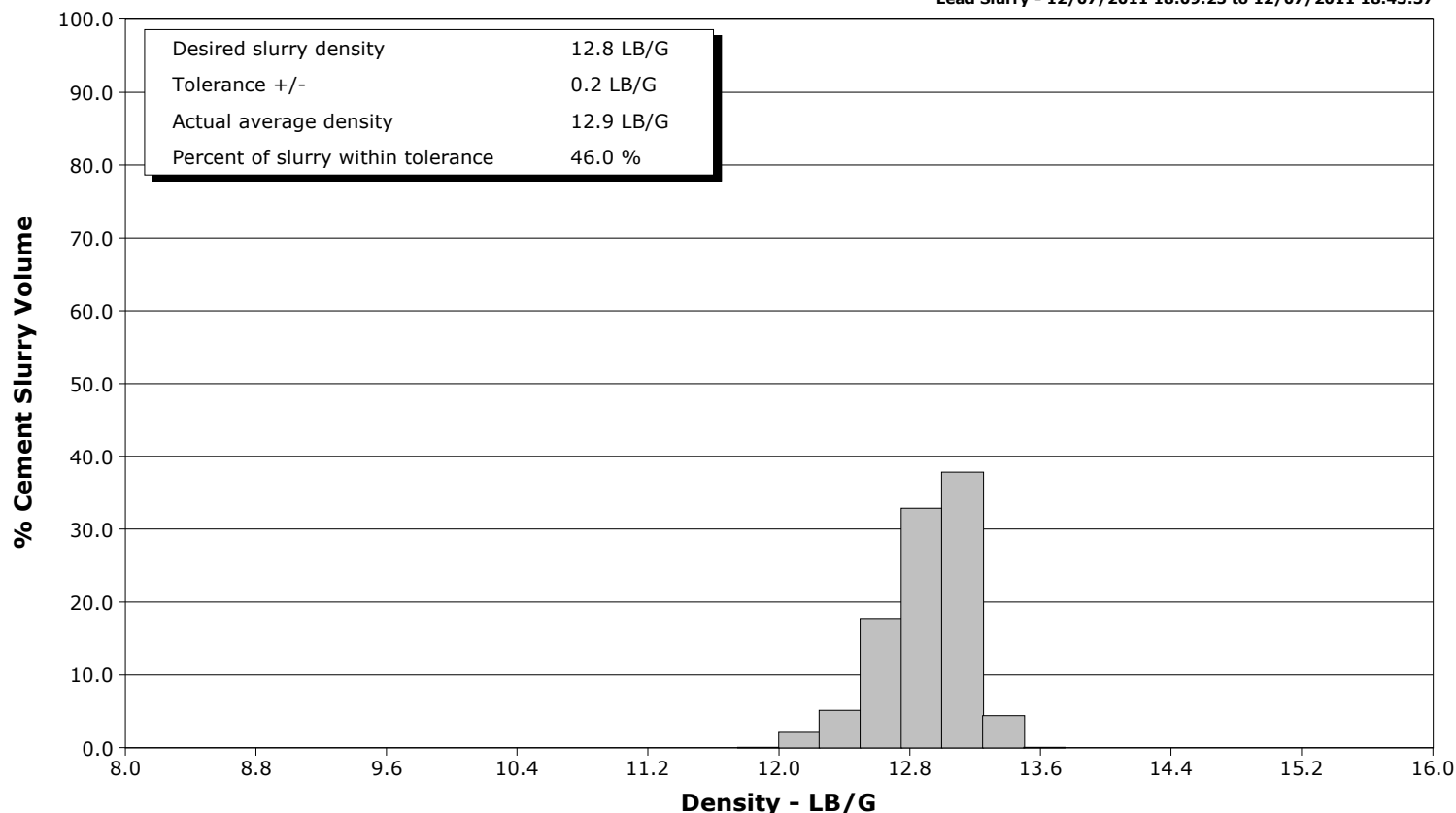
Client Williams
SIR No. BUNM-00609
Job Type 9 5/8" 2-Stage Surface
Job Date 12-07-2011



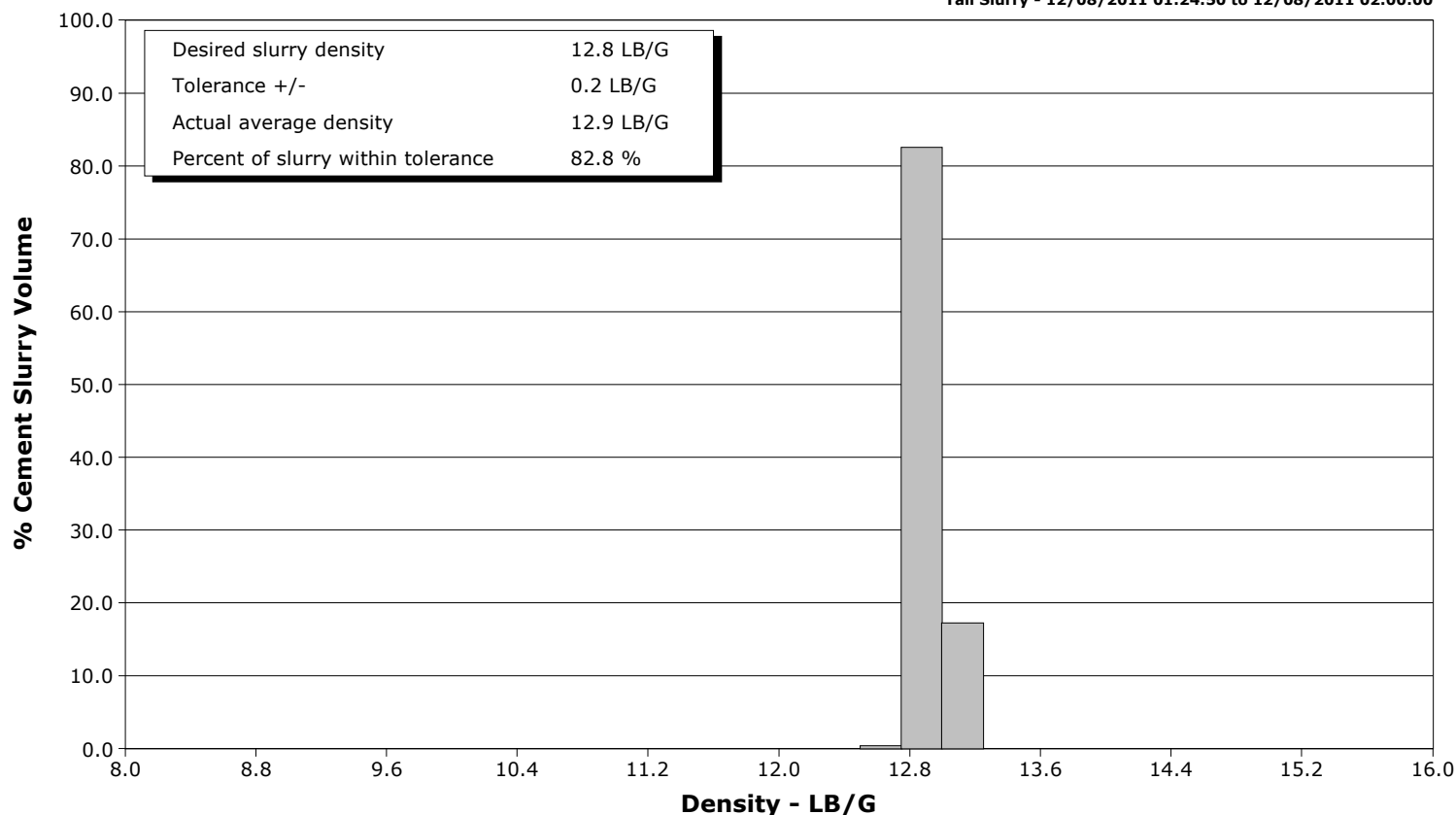
Well RGU 11-36-198
Field Ryan Gulch Unit
Engineer Ryan Bowditch
Country United States

Client Williams
SIR No. BUNM-00609
Job Type 9 5/8" 2-Stage Surface
Job Date 12-07-2011

Lead Slurry - 12/07/2011 18:09:25 to 12/07/2011 18:43:37



Tail Slurry - 12/08/2011 01:24:50 to 12/08/2011 02:00:00



					Customer Williams			Job Number BUNM-00609	
Well RGU 11-36-198			Location (legal) RGU 24-25-198			Schlumberger Location Grand Junction, CO		Job Start Dec/07/2011	
Field Ryan Gulch Unit		Formation Name/Type Shale		Deviation 15 deg		Bit Size 13.5 in		Well MD 3854.0 ft	
County Rio Blanco		State/Province Colorado		BHP psi		BHST 122 degF		BHCT 88 degF	
Well Master 0631336006		API/UWI						Pore Press. Gradient lb/gal	
Rig Name Frontier 10		Drilled For Gas		Service Via Land		Casing/Liner			
						Depth, ft		Size, in	
						Weight, lb/ft		Grade	
						Thread			
Offshore Zone		Well Class New		Well Type Development		80.0		18.0	
						3854.0		9.6	
						94.0		K55	
						36.0		K55	
Drilling Fluid Type		Max. Density lb/gal		Plastic Viscosity cP		Tubing/Drill Pipe			
						T/D		Depth, ft	
						Size, in		Weight, lb/ft	
						Grade		Thread	
Service Line Cementing		Job Type 9 5/8" 2-Stage Surface				0.0		0.0	
						0.0		0.0	
Max. Allowed Tub. Press 3000 psi		Max. Allowed Ann. Press 500 psi		WH Connection Single Cement head		Perforations/Open Hole			
						Top, ft		Bottom, ft	
						shot/ft		No. of Shots	
						ft		ft	
						ft		ft	
						Treat Down Casing		Displacement 298.0 bbl	
						Packer Type		Packer Depth ft	
						Tubing Vol. bbl		Casing Vol. 301.6 bbl	
						Annular Vol. 354.0 bbl		Openhole Vol. 530.0 bbl	
Service Instructions Cement 9 5/8" 1st Stage with: 20 bbls Water 262 bbls 12.8 ppq Cement (854 sks @ 1.72 cft/sk) Displace 298 bbls Water Cement 2nd Stage with: 20 bbls Water 374 bbls 12.8 ppq Cement (1220 sks @ 1.72 cft/sk) Displace 140 bbls Water									
Casing/Tubing Secured <input checked="" type="checkbox"/>		1 Hole Vol. Circulated prior to Cement <input checked="" type="checkbox"/>				Casing Tools		Squeeze Job	
Lift Pressure 850 psi						Shoe Type Float		Squeeze Type	
Pipe Rotated <input type="checkbox"/>		Pipe Reciprocated <input type="checkbox"/>				Shoe Depth 3854.0 ft		Tool Type	
No. Centralizers		Top Plugs 1		Bottom Plugs		Stage Tool Type		Tool Depth ft	
Cement Head Type Single						Stage Tool Depth ft		Tail Pipe Size in	
Job Scheduled For Dec/07/2011		Arrived on Location Dec/07/2011		Leave Location Dec/07/2011		Collar Type Float		Tail Pipe Depth ft	
						Collar Depth 3854.0 ft		Sqz. Total Vol. bbl	
Date	Time 24-hr clock	Treating Pressure PSI	Flow Rate B/M	Density LB/G	Volume BBL	Solid Fraction NULL	Message		
12/07/2011	17:28:38	-43	0.0	8.34	0.0	0	Started Acquisition		
12/07/2011	17:28:39	-43	0.0	8.34	0.0	0	Held Safety Meeting		
12/07/2011	17:28:40	-43	0.0	8.35	0.0	0	2 bbls Water Ahead		
12/07/2011	17:30:18	-17	0.0	8.34	0.4	0			
12/07/2011	17:31:58	-34	0.5	8.34	1.0	0			
12/07/2011	17:33:38	-34	0.0	8.34	1.5	0			
12/07/2011	17:35:18	69	0.6	8.34	1.8	0			
12/07/2011	17:36:58	62	0.0	8.34	3.2	0			
12/07/2011	17:38:38	52	0.0	8.34	3.2	0			
12/07/2011	17:40:18	60	0.0	8.34	4.3	0			
12/07/2011	17:41:00	735	0.0	8.34	4.3	0	Pressure Test Lines		
12/07/2011	17:41:01	735	0.0	8.34	4.3	0	Pressure Test = Good		
12/07/2011	17:41:58	3112	0.0	8.34	4.3	0			
12/07/2011	17:43:38	3342	0.0	8.34	4.3	0			
12/07/2011	17:45:18	2811	0.0	8.35	4.3	0			
12/07/2011	17:46:30	2687	0.0	8.34	4.3	0	Pressure Test Lines		
12/07/2011	17:46:31	2687	0.0	8.34	4.3	0	Pressure Test = Good		
12/07/2011	17:46:58	2648	0.0	8.34	4.3	0			
12/07/2011	17:48:38	31	0.0	8.34	4.3	0			
12/07/2011	17:50:18	301	4.5	8.34	8.5	0			
12/07/2011	17:51:02	290	5.2	8.34	12.3	0	Start Pumping Spacer		

Well			Field		Job Start		Customer		Job Number	
RGU 11-36-198			Ryan Gulch Unit		Dec/07/2011		Williams		BUNM-00609	
Date	Time 24-hr clock	Treating Pressure PSI	Flow Rate B/M	Density LB/G	Volume BBL	Solid Fraction NULL	Message			
12/07/2011	17:51:58	241	4.6	8.34	17.1	0				
12/07/2011	17:53:14	292	4.6	10.56	22.1	0	Reset Total, Vol = 22.11 bbl			
12/07/2011	17:53:17	316	5.1	12.64	22.3	0	End Spacer			
12/07/2011	17:53:38	419	5.3	13.08	24.2	0				
12/07/2011	17:55:18	494	6.0	13.36	33.1	0				
12/07/2011	17:56:28	507	6.3	13.78	40.4	0	Took Wet Sample			
12/07/2011	17:56:58	538	7.0	13.86	43.8	0				
12/07/2011	17:58:38	524	7.2	13.35	55.7	0				
12/07/2011	17:59:32	477	7.2	13.18	62.2	0	Wet Sample @ 13.8 ppg			
12/07/2011	18:00:18	441	7.3	12.78	67.8	0				
12/07/2011	18:01:58	436	7.9	12.63	80.1	0				
12/07/2011	18:03:38	247	6.0	12.68	91.1	0				
12/07/2011	18:05:18	245	6.0	13.11	101.0	0				
12/07/2011	18:06:58	293	5.9	12.99	110.9	0				
12/07/2011	18:08:38	453	7.5	12.95	122.7	0				
12/07/2011	18:09:25	446	7.5	12.93	128.6	0	Start Mixing Lead Slurry			
12/07/2011	18:09:27	464	7.5	12.93	128.9	0	262 bbls Lead Cement			
12/07/2011	18:09:28	465	7.5	12.93	129.0	0	Lead @ 12.8 ppg			
12/07/2011	18:10:18	430	7.6	12.96	135.3	0				
12/07/2011	18:11:58	451	7.6	13.07	148.0	0				
12/07/2011	18:13:38	514	7.7	13.23	160.8	0				
12/07/2011	18:15:18	491	7.8	13.30	173.8	0				
12/07/2011	18:16:58	459	7.8	12.64	186.9	0				
12/07/2011	18:18:38	36	2.4	12.46	193.9	0				
12/07/2011	18:20:18	35	2.3	12.51	197.8	0				
12/07/2011	18:21:58	42	2.4	12.72	201.7	0				
12/07/2011	18:23:38	40	2.4	12.71	205.8	0				
12/07/2011	18:25:18	276	5.9	12.69	211.3	0				
12/07/2011	18:26:58	-26	0.6	13.64	219.3	0				
12/07/2011	18:28:38	-33	0.0	12.28	220.4	0				
12/07/2011	18:30:18	-34	0.0	12.13	220.4	0				
12/07/2011	18:31:58	-34	0.0	12.06	220.4	0				
12/07/2011	18:33:38	119	3.2	13.33	221.4	0				
12/07/2011	18:35:18	307	5.9	12.88	229.4	0				
12/07/2011	18:36:58	309	5.9	13.03	239.3	0				
12/07/2011	18:38:38	319	5.9	13.09	249.2	0				
12/07/2011	18:40:18	321	6.0	13.05	259.1	0				
12/07/2011	18:41:58	296	6.0	12.80	269.0	0				
12/07/2011	18:43:37	312	5.9	12.85	278.8	8	End Lead Slurry			
12/07/2011	18:43:38	312	5.9	12.85	278.9	8				
12/07/2011	18:45:18	-29	0.3	13.98	288.3	0				
12/07/2011	18:46:58	-29	0.0	13.63	288.3	0				
12/07/2011	18:48:38	-30	0.0	13.34	288.3	0				
12/07/2011	18:50:18	-30	0.0	13.37	288.3	0				
12/07/2011	18:51:58	-30	0.0	13.36	288.3	0				
12/07/2011	18:53:38	111	4.4	8.76	292.6	0				
12/07/2011	18:54:48	180	5.9	8.49	298.9	0	Start Displacement			
12/07/2011	18:54:50	172	5.9	8.47	299.1	0	Dropped Wiper Plug Through Cap/Bowl			
12/07/2011	18:55:18	169	5.9	8.43	301.9	0				
12/07/2011	18:56:58	161	5.9	8.37	311.7	0				
12/07/2011	18:58:38	176	5.9	8.36	321.5	0				
12/07/2011	19:00:18	159	5.9	8.36	331.3	0				
12/07/2011	19:01:58	171	5.8	8.34	340.9	0				
12/07/2011	19:03:38	158	5.8	8.26	350.5	0				

Well			Field		Job Start	Customer		Job Number
RGU 11-36-198			Ryan Gulch Unit		Dec/07/2011	Williams		BUNM-00609
Date	Time 24-hr clock	Treating Pressure PSI	Flow Rate B/M	Density LB/G	Volume BBL	Solid Fraction NULL	Message	
12/07/2011	19:06:58	159	5.9	8.31	369.9	0		
12/07/2011	19:08:38	153	5.9	8.35	379.8	0		
12/07/2011	19:10:18	151	5.9	8.35	389.6	99		
12/07/2011	19:11:58	165	5.9	8.35	399.4	0		
12/07/2011	19:13:38	172	5.9	8.35	409.2	0		
12/07/2011	19:15:18	90	3.9	8.35	418.3	0		
12/07/2011	19:16:58	33	2.6	8.35	424.2	0		
12/07/2011	19:18:38	92	3.4	8.35	429.5	0		
12/07/2011	19:20:18	128	3.4	8.35	435.1	0		
12/07/2011	19:21:58	143	3.3	8.35	440.7	0		
12/07/2011	19:23:38	184	3.3	8.35	446.2	0		
12/07/2011	19:25:18	340	5.9	8.35	455.0	0		
12/07/2011	19:26:58	377	5.9	8.35	464.8	0		
12/07/2011	19:28:38	455	5.9	8.35	474.5	0		
12/07/2011	19:30:18	475	5.9	8.35	484.3	0		
12/07/2011	19:31:58	556	5.9	8.35	494.1	0		
12/07/2011	19:33:38	589	5.9	8.35	503.8	0		
12/07/2011	19:35:18	642	5.9	8.35	513.6	0		
12/07/2011	19:36:58	672	5.9	8.35	523.3	0		
12/07/2011	19:38:38	721	5.9	8.35	533.1	0		
12/07/2011	19:40:18	740	5.9	8.35	542.8	0		
12/07/2011	19:41:58	837	5.8	8.35	552.6	0		
12/07/2011	19:43:38	868	5.9	8.35	562.3	0		
12/07/2011	19:45:18	922	5.8	8.35	572.0	0		
12/07/2011	19:46:58	795	4.1	8.35	580.5	0		
12/07/2011	19:48:38	814	4.1	8.35	587.4	0		
12/07/2011	19:50:18	865	2.6	8.35	592.3	0		
12/07/2011	19:51:13	1308	0.0	8.35	593.5	0	End Displacement	
12/07/2011	19:51:16	1312	0.0	8.35	593.5	0	Bump Top Plug	
12/07/2011	19:51:18	1315	0.0	8.35	593.5	0	Final Circulating Pressure = 850 psi	
12/07/2011	19:51:20	1314	0.0	8.35	593.5	0	Bump Plug to 1350 psi	
12/07/2011	19:51:58	1311	0.0	8.35	593.5	0		
12/07/2011	19:53:38	1316	0.0	8.36	593.5	0		
12/07/2011	19:55:18	1322	0.0	8.36	593.5	0		
12/07/2011	19:56:58	69	0.0	8.36	593.5	0		
12/07/2011	19:58:38	-37	0.0	8.36	593.5	0		
12/07/2011	20:00:18	-36	0.0	8.36	593.5	0		
12/07/2011	20:01:58	-36	0.0	8.36	593.5	0		
12/07/2011	20:03:38	-36	0.0	8.36	593.5	0		
12/07/2011	20:05:18	-36	0.0	8.36	593.5	0		
12/07/2011	20:06:58	-36	0.0	8.36	593.5	0		
12/07/2011	20:08:38	-36	0.0	8.36	593.5	0		
12/07/2011	20:09:54	-36	0.0	8.36	593.5	0	Dropped Opening Bomb	
12/07/2011	20:10:18	-36	0.0	8.36	593.5	0		
12/07/2011	20:11:58	-36	0.0	8.36	593.5	0		
12/07/2011	20:13:38	-36	0.0	8.36	593.5	0		
12/07/2011	20:15:18	-37	0.0	8.36	593.5	0		
12/07/2011	20:16:58	-33	0.1	8.36	593.5	0		
12/07/2011	20:17:05	25	1.8	8.37	593.6	0	Pressure Up on Bomb	
12/07/2011	20:18:38	633	0.0	8.36	594.3	0		
12/07/2011	20:20:18	339	2.8	8.36	596.1	0		
12/07/2011	20:20:26	313	3.0	8.36	596.5	0	Pump 10 bbls Water	
12/07/2011	20:20:27	340	3.0	8.36	596.5	0	Turn Over to Rig for Circulation	
12/07/2011	20:21:58	317	3.3	8.36	601.4	0		

Well RGU 11-36-198			Field Ryan Gulch Unit		Job Start Dec/07/2011		Customer Williams	Job Number BUNM-00609
Date	Time 24-hr clock	Treating Pressure PSI	Flow Rate B/M	Density LB/G	Volume BBL	Solid Fraction NULL	Message	
12/07/2011	20:25:18	-38	0.0	8.36	602.2	0		
12/07/2011	20:26:58	-42	0.0	8.36	602.2	0		
12/07/2011	20:28:38	-41	0.0	8.36	602.2	0		
12/07/2011	20:30:18	-41	0.0	8.36	602.2	0		
12/07/2011	20:31:58	93	0.0	8.36	602.2	0		
12/07/2011	20:33:38	-35	0.0	8.36	602.2	0		
12/08/2011	00:30:18	-39	0.0	8.35	2.5	0		
12/08/2011	00:31:58	32	1.3	8.35	0.5	0		
12/08/2011	00:33:38	816	0.0	8.35	2.4	0		
12/08/2011	00:33:59	799	0.0	8.35	2.4	0	Pressure Test Lines	
12/08/2011	00:34:00	799	0.0	8.35	2.4	0	500 psi Pressure Test	
12/08/2011	00:35:00	3336	0.0	8.35	2.4	0	Pressure Test Lines	
12/08/2011	00:35:18	3248	0.0	8.35	2.4	0		
12/08/2011	00:36:58	-31	0.0	8.35	2.4	0		
12/08/2011	00:38:18	78	3.4	8.35	5.3	0	Start Pumping Spacer	
12/08/2011	00:38:19	75	3.4	8.35	5.3	0	20 bbls Water Spacer	
12/08/2011	00:38:38	78	3.4	8.35	6.4	0		
12/08/2011	00:40:02	77	3.4	8.35	11.1	0	Reset Total, Vol = 592.02 bbl	
12/08/2011	00:40:18	77	3.4	8.35	12.0	0		
12/08/2011	00:41:58	36	1.5	8.35	15.1	0		
12/08/2011	00:43:38	63	2.7	8.35	19.6	0		
12/08/2011	00:45:18	189	4.4	12.39	25.9	0		
12/08/2011	00:46:58	312	6.0	12.78	34.7	0		
12/08/2011	00:47:13	316	6.0	12.76	36.2	0	End Spacer	
12/08/2011	00:47:15	304	6.0	12.76	36.4	0	Reset Total, Vol = 25.24 bbl	
12/08/2011	00:48:38	316	6.0	13.00	44.6	0		
12/08/2011	00:50:18	292	6.0	12.90	54.6	0		
12/08/2011	00:51:58	340	6.1	12.66	64.6	0		
12/08/2011	00:53:38	-16	3.8	12.35	71.8	0		
12/08/2011	00:55:18	8	1.8	11.41	75.3	0		
12/08/2011	00:56:58	-24	1.8	11.60	78.7	0		
12/08/2011	00:58:38	-32	0.3	11.51	80.1	0		
12/08/2011	01:00:18	-34	0.0	11.41	80.3	0		
12/08/2011	01:01:58	-28	0.5	11.89	80.4	0		
12/08/2011	01:03:38	-34	0.1	11.30	81.1	0		
12/08/2011	01:05:18	-28	0.2	11.30	81.1	0		
12/08/2011	01:06:58	-34	0.0	11.33	81.3	0		
12/08/2011	01:08:38	54	3.1	10.10	84.0	0		
12/08/2011	01:10:18	-33	0.3	11.27	85.6	0		
12/08/2011	01:11:58	18	2.9	8.31	88.3	0		
12/08/2011	01:13:38	33	3.2	8.36	93.4	0		
12/08/2011	01:15:18	36	3.3	8.36	98.8	0		
12/08/2011	01:16:58	40	3.2	8.35	104.2	0		
12/08/2011	01:18:38	35	3.3	8.35	109.7	0		
12/08/2011	01:20:18	-31	0.8	11.18	113.6	0		
12/08/2011	01:21:58	-23	0.9	10.90	115.6	0		
12/08/2011	01:23:38	112	3.2	13.08	117.5	0		
12/08/2011	01:24:50	196	4.4	13.19	122.2	0	Start Mixing Tail Slurry	
12/08/2011	01:24:51	196	4.4	13.19	122.3	0	374 bbls Cement Slurry	
12/08/2011	01:25:18	180	4.4	13.13	124.3	0		
12/08/2011	01:26:58	296	5.9	12.95	132.9	0		
12/08/2011	01:28:38	300	5.9	12.90	142.7	0		
12/08/2011	01:30:18	303	5.9	12.96	152.6	0		
12/08/2011	01:31:58	295	6.0	12.92	162.5	0		

Well			Field		Job Start	Customer		Job Number
RGU 11-36-198			Ryan Gulch Unit		Dec/07/2011	Williams		BUNM-00609
Date	Time 24-hr clock	Treating Pressure PSI	Flow Rate B/M	Density LB/G	Volume BBL	Solid Fraction NULL	Message	
12/08/2011	01:35:18	295	6.0	13.10	182.5	0		
12/08/2011	01:36:58	309	6.1	13.18	192.6	0		
12/08/2011	01:38:38	297	6.0	13.04	202.6	0		
12/08/2011	01:40:18	294	6.0	12.94	212.6	0		
12/08/2011	01:41:58	296	5.9	12.89	222.5	0		
12/08/2011	01:43:38	305	5.9	12.88	232.4	0		
12/08/2011	01:45:18	305	5.9	12.87	242.3	0		
12/08/2011	01:46:58	297	6.0	12.87	252.2	0		
12/08/2011	01:48:38	302	5.9	12.85	262.1	0		
12/08/2011	01:50:18	295	6.0	12.87	272.0	0		
12/08/2011	01:51:58	304	6.0	12.87	281.9	0		
12/08/2011	01:53:38	299	6.0	12.88	291.9	0		
12/08/2011	01:55:18	299	6.0	12.88	301.8	0		
12/08/2011	01:56:58	309	6.0	12.88	311.7	0		
12/08/2011	01:58:38	298	6.0	12.88	321.7	0		
12/08/2011	02:00:00	303	5.9	12.86	329.8	0	Good Returns	
12/08/2011	02:00:18	311	5.9	12.86	331.6	0		
12/08/2011	02:01:58	313	5.9	12.87	341.5	0		
12/08/2011	02:03:38	33	2.1	12.84	350.8	0		
12/08/2011	02:05:18	19	1.9	12.63	354.1	0		
12/08/2011	02:06:58	25	2.1	12.12	357.4	75		
12/08/2011	02:08:38	25	2.1	12.15	360.9	98		
12/08/2011	02:10:18	26	2.1	12.04	364.4	99		
12/08/2011	02:11:58	-20	0.0	12.10	367.1	0		
12/08/2011	02:13:38	-19	0.0	12.08	367.1	0		
12/08/2011	02:15:18	46	1.8	10.87	367.7	0		
12/08/2011	02:15:45	72	3.4	8.67	368.9	0	Reset Total, Vol = 332.57 bbl	
12/08/2011	02:15:49	68	3.5	8.64	369.2	0	Start Displacement	
12/08/2011	02:15:50	68	3.5	8.64	369.2	0	Drop Top Plug	
12/08/2011	02:15:51	68	3.5	8.64	369.3	0	Plug Dropped in Cap and Bowl	
12/08/2011	02:16:58	64	3.6	8.53	373.2	0		
12/08/2011	02:18:38	60	3.5	8.41	379.2	0		
12/08/2011	02:20:18	71	3.4	8.38	384.9	0		
12/08/2011	02:21:58	86	3.3	8.37	390.5	0		
12/08/2011	02:23:38	100	3.4	8.50	396.1	0		
12/08/2011	02:25:18	120	3.4	8.39	401.7	0		
12/08/2011	02:26:58	152	3.3	8.38	407.3	0		
12/08/2011	02:28:38	169	3.4	8.33	412.9	0		
12/08/2011	02:30:18	197	3.5	8.18	418.5	0		
12/08/2011	02:31:58	213	3.4	8.35	424.2	0		
12/08/2011	02:33:38	195	1.1	8.36	428.9	0		
12/08/2011	02:35:18	230	3.2	8.33	431.0	0		
12/08/2011	02:36:58	266	3.3	8.36	436.6	87		
12/08/2011	02:38:38	278	3.3	8.36	442.1	98		
12/08/2011	02:40:18	319	3.3	8.36	447.6	0		
12/08/2011	02:41:58	320	3.3	8.36	453.2	0		
12/08/2011	02:43:38	343	3.3	8.36	458.7	0		
12/08/2011	02:45:18	351	3.3	8.36	464.2	0		
12/08/2011	02:46:58	384	3.3	8.36	469.8	0		
12/08/2011	02:47:48	403	3.3	8.36	472.5	0	Good Returns	
12/08/2011	02:48:38	388	3.3	8.36	475.3	0		
12/08/2011	02:50:18	433	3.3	8.36	480.8	0		
12/08/2011	02:51:58	350	1.2	8.36	485.3	0		
12/08/2011	02:53:38	385	1.2	8.36	487.3	0		

Well			Field		Job Start	Customer		Job Number
RGU 11-36-198			Ryan Gulch Unit		Dec/07/2011	Williams		BUNM-00609
Date	Time 24-hr clock	Treating Pressure PSI	Flow Rate B/M	Density LB/G	Volume BBL	Solid Fraction NULL	Message	
12/08/2011	02:56:58	389	1.2	8.37	491.2	0		
12/08/2011	02:58:38	312	0.0	8.37	492.3	0		
12/08/2011	03:00:18	304	0.0	8.37	492.3	0		
12/08/2011	03:01:58	304	0.0	8.37	492.3	0		
12/08/2011	03:03:38	306	0.0	8.37	492.3	0		
12/08/2011	03:05:18	306	0.0	8.37	492.3	0		
12/08/2011	03:06:58	370	0.8	8.37	492.5	0		
12/08/2011	03:08:38	381	1.1	8.37	494.3	0		
12/08/2011	03:10:18	372	1.1	8.37	496.1	0		
12/08/2011	03:11:58	408	1.1	8.37	497.9	0		
12/08/2011	03:13:38	391	1.1	8.37	499.7	0		
12/08/2011	03:15:18	417	1.1	8.37	501.6	0		
12/08/2011	03:16:58	395	1.1	8.37	503.4	0		
12/08/2011	03:18:38	387	1.1	8.37	505.2	0		
12/08/2011	03:20:18	440	1.1	8.37	507.0	0		
12/08/2011	03:21:58	402	1.1	8.37	508.9	0		
12/08/2011	03:23:38	930	1.1	8.37	510.7	0		
12/08/2011	03:24:32	1391	0.0	8.37	511.1	0	Bump Top Plug	
12/08/2011	03:24:33	1390	0.0	8.37	511.1	0	End Displacement	
12/08/2011	03:24:34	1390	0.0	8.37	511.1	0	Final Circulating Pressure = 400 psi	
12/08/2011	03:24:51	1386	0.0	8.37	511.1	0	Good Returns During Displacement	
12/08/2011	03:25:18	1316	0.0	8.37	511.1	0		
12/08/2011	03:26:03	-40	0.0	8.37	511.1	0	1 bbl Bled Back	
12/08/2011	03:26:58	-38	0.0	8.37	511.1	0		
12/08/2011	11:40:26	1	0.0	8.37	17.8	0	Begin Top Out	
12/08/2011	11:40:28	1	0.0	8.37	17.8	0	Reset Total, Vol = 142.11 bbl	
12/08/2011	11:41:58	7	0.0	8.37	17.8	0		
12/08/2011	11:43:38	1	0.0	8.37	17.8	0		
12/08/2011	11:45:18	1	0.0	8.37	17.8	0		
12/08/2011	11:46:58	1	0.0	8.35	17.8	0		
12/08/2011	11:48:38	5	0.0	8.36	17.8	0		
12/08/2011	11:50:18	5	0.0	8.36	17.8	0		
12/08/2011	11:51:58	2	0.0	8.36	17.8	0		
12/08/2011	11:53:38	2	0.0	8.36	17.8	0		
12/08/2011	11:55:18	2	0.0	8.36	17.8	0		
12/08/2011	11:56:58	2	0.0	8.35	17.8	0		
12/08/2011	11:58:38	2	0.0	8.35	17.8	0		
12/08/2011	12:00:18	29	0.1	8.34	0.1	0		
12/08/2011	12:01:58	-1	0.0	8.34	0.7	0		
12/08/2011	12:03:38	123	3.2	14.10	2.8	0		
12/08/2011	12:05:18	114	2.9	14.33	7.8	0		
12/08/2011	12:06:58	167	2.5	14.85	12.5	0		
12/08/2011	12:08:38	-3	0.0	10.83	14.6	0		
12/08/2011	12:10:18	-3	0.0	10.84	14.6	0		

Well RGU 11-36-198	Field Ryan Gulch Unit	Job Start Dec/07/2011	Customer Williams	Job Number BUNM-00609
------------------------------	---------------------------------	---------------------------------	-----------------------------	---------------------------------

Post Job Summary

Average Pump Rates, bbl/min					Volume of Fluid Injected, bbl					
Slurry 4.0	N2		Mud	Maximum Rate 8.0	Total Slurry 636.0	Mud 0.0		Spacer 40.0	N2	
Treating Pressure Summary, psi					Breakdown Fluid					
Maximum 3414	Final 8	Average 332	Bump Plug to 1300	Breakdown	Type		Volume bbl		Density lb/gal	
Avg. N2 Percent %		Designed Slurry Volume 636.0 bbl		Displacement 298.0 bbl		Mix Water Temp 50 degF		Cement Circulated to Surface? <input checked="" type="checkbox"/>		Volume 155.0 bbl
								Washed Thru Perfs <input type="checkbox"/>		To ft
Customer or Authorized Representative Brent Bascom				Schlumberger Supervisor Ryan Bowditch				Circulation Lost <input type="checkbox"/>		Job Completed <input checked="" type="checkbox"/>
								-		-