

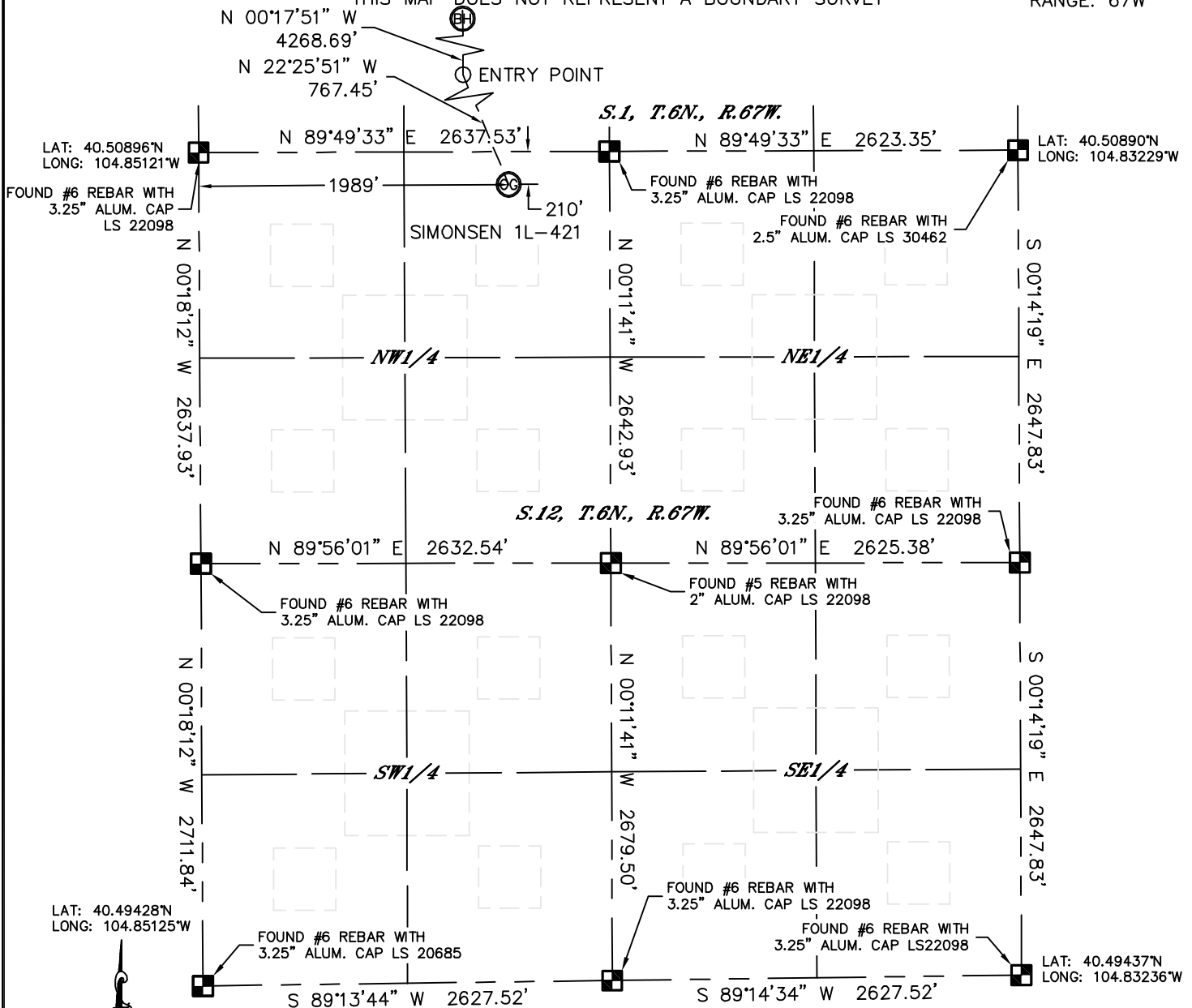


Lat40°, Inc. 1635 Foxtrail Drive, Suite 325 Loveland, CO 970-776-3321

WELL LOCATION CERTIFICATE

SECTION: 12
TOWNSHIP: 6N
RANGE: 67W

THIS MAP DOES NOT REPRESENT A BOUNDARY SURVEY



In accordance with a request from Al Bragg with PDC ENERGY Lat40°, Inc. has determined the surface location of the SIMONSEN 1L-421 to be 210' from the NORTH line and 1989' from the WEST line as measured at right angles from the section lines of Section 12, Township 6 North, Range 67 West and the bottom hole to be 500' from the NORTH line and 1700' from the WEST line as measured at right angles from the section lines of Section 1, Township 6 North, Range 67 West of the Sixth Principal Meridian, County of Weld, State of Colorado.

I hereby state that this Well Location Certificate was prepared by me, or under my direct supervision, that the fieldwork was completed on 4/25/2012, for and on behalf of PDC ENERGY. That this is not a Land Survey Plat or an Improvement Survey Plat, and that it is not to be relied upon for establishment of fence, building, or other future improvement lines.

NOTE:

- 1) Bearings shown are Grid Bearings of the Colorado State Plane Coordinate System, North Zone, North American Datum 1983/2007. The lineal dimensions as contained herein are based upon the "U.S. Survey Foot."
- 2) Ground elevations are based on an observed GPS elevation (NAVD 1988 DATUM).
- 3) IMPROVEMENTS: See LOCATION DRAWING for all visible improvements within 400' of disturbed area.
- 4) SURFACE USE: CROP LAND
- 5) INSTRUMENT OPERATOR: ADAM KELLY

SURFACE LOCATION

LAT: 40.50836°N
LONG: 104.84406°W
PDOP: 1.6
ELEV: 4880'
1/4,1/4: NE1/4NW1/4
NEAREST PROPERTY LINE: 210' NORTH

ENTRY HOLE

LAT: 40.51032°N
LONG: 104.84509°W

BOTTOM HOLE

LAT: 40.52203°N
LONG: 104.84506°W

NOTE

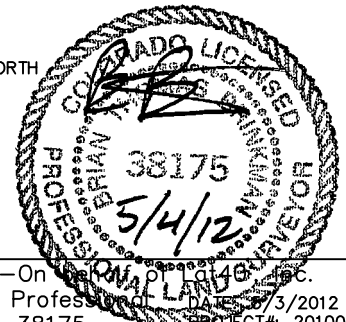
According to Colorado law, you must commence any legal action based upon any defect in this W.L.C. within three years after you discover such defect. In no event, may any action based upon any defect in this survey be commenced more than ten years after the date of the certificate shown hereon. (13-80-105 C.R.S.)

LEGEND

- = ALIQUOT MONUMENT AS DESCRIBED
- = CALCULATED POSITION

SHEET 1 OF 2

Brian T. Brinkman—On
Colorado Licensed Professional Land Surveyor No. 38175
PROJECT#: 2010056



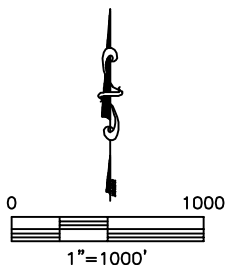
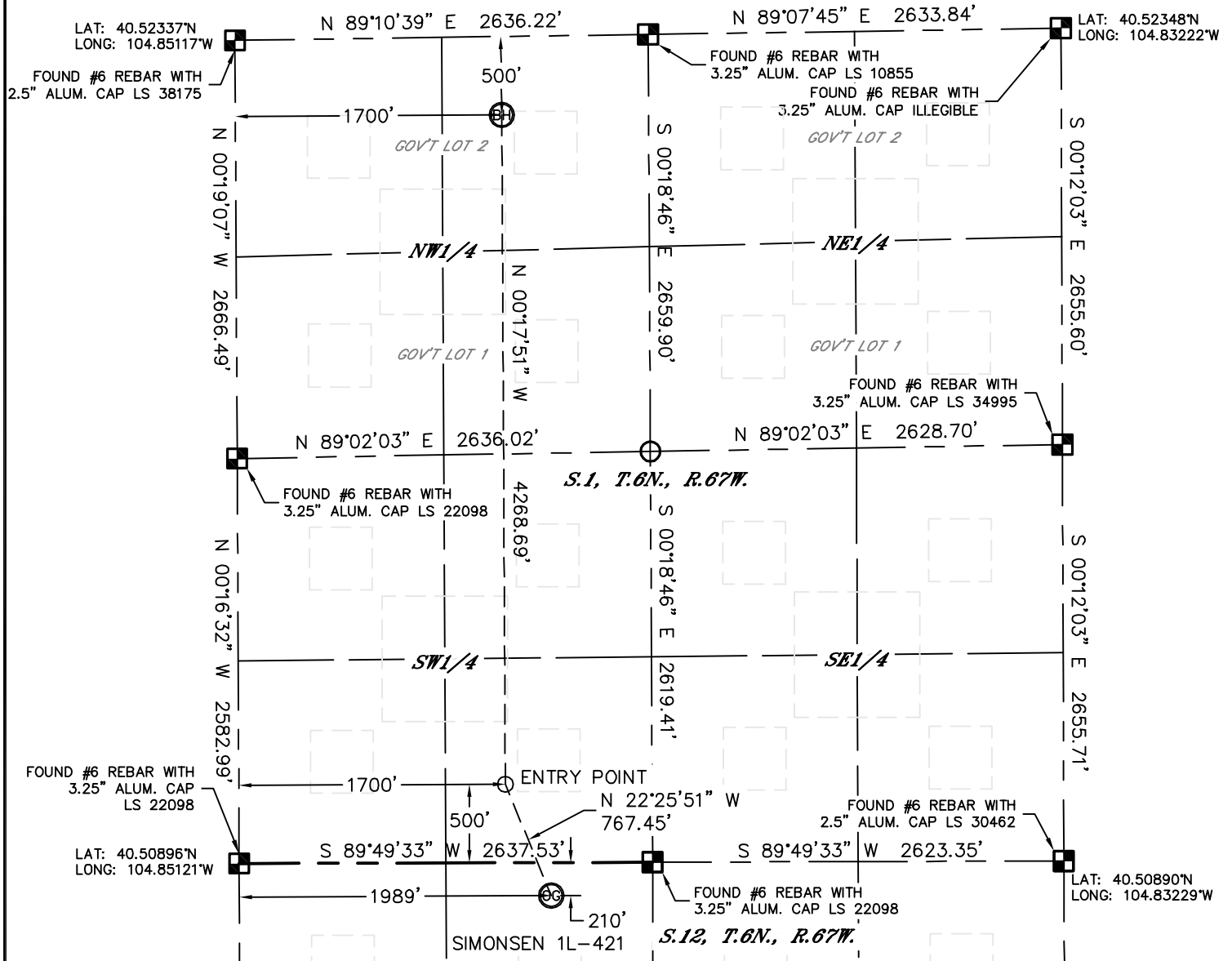


Lat40°, Inc. 1635 Foxtrail Drive, Suite 325 Loveland, CO 970-776-3321

WELL LOCATION CERTIFICATE

THIS MAP DOES NOT REPRESENT A BOUNDARY SURVEY



SECTION: 12
TOWNSHIP: 6N
RANGE: 67W



NOTE

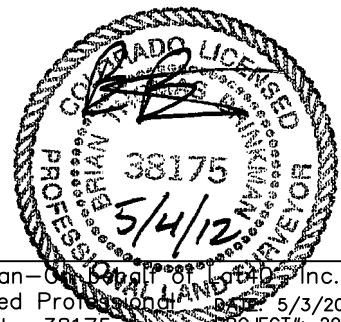
According to Colorado law, you must commence any legal action based upon any defect in this W.L.C. within three years after you discover such defect. In no event, may any action based upon any defect in this survey be commenced more than ten years after the date of the certificate shown hereon. (13-80-105 C.R.S.)

LEGEND

-  = ALIQUOT MONUMENT AS DESCRIBED
-  = CALCULATED POSITION

SHEET 2 OF 2

Brian T. Brinkman—Owner of Lat40°, Inc.
Colorado Licensed Professional Surveyor
Land Surveyor No. 38175
PROJECT#: 2010056



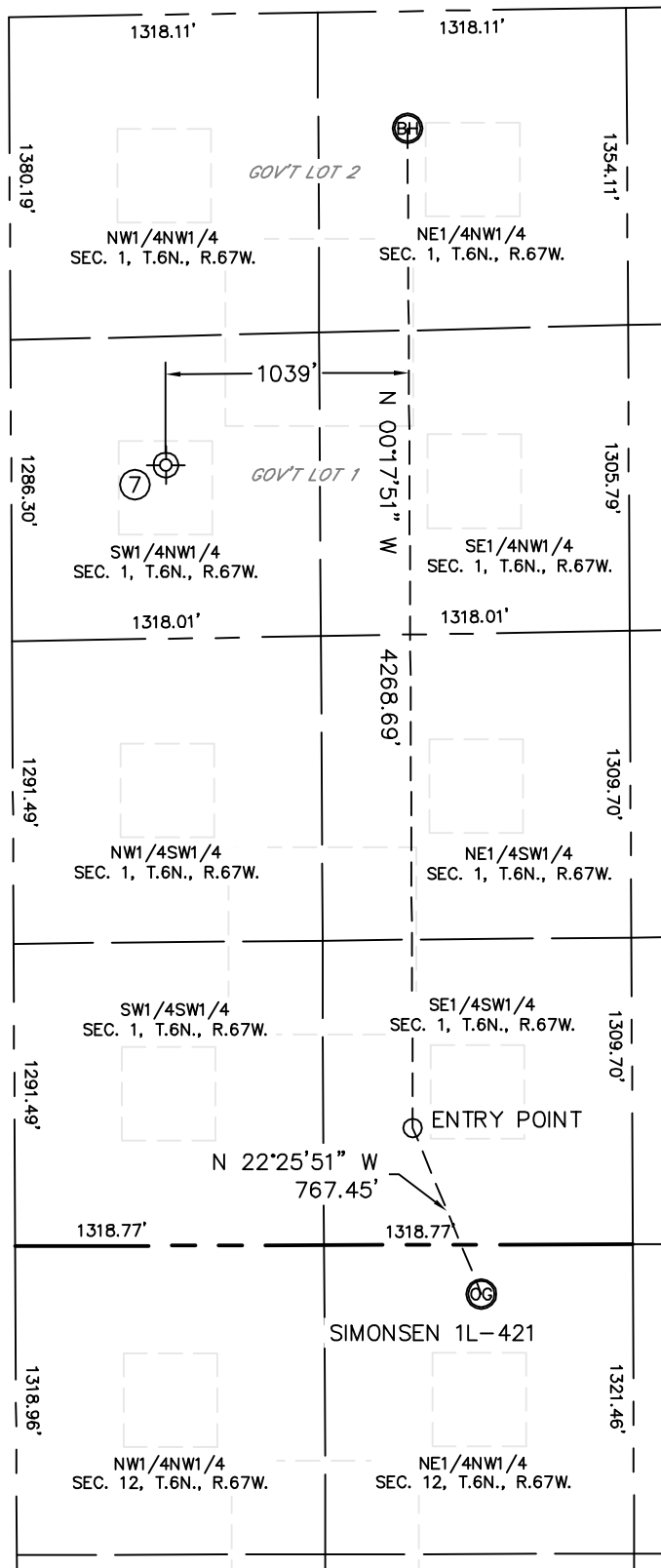


Lat40°, Inc. 1635 Foxtrail Drive, Suite 325 Loveland, CO 970-776-3321

SITE SKETCH

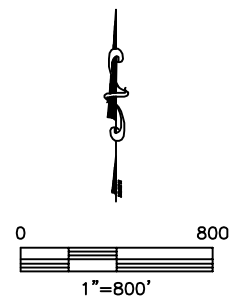
SIMONSEN 1L-421

SECTION: 12
TOWNSHIP: 6N
RANGE: 67W



⑦

COLLINS 1
(Dry & Abandoned)
SW1/4NW1/4
1923' FNL (COGCC)
660' FWL (COGCC)
LAT-40.518062°N (COGCC)
LONG-104.848765°W (COGCC)
PDOP: N/A
ELEV: 4875' (COGCC)



DATE: 5/3/2012
PROJECT#: 2010056