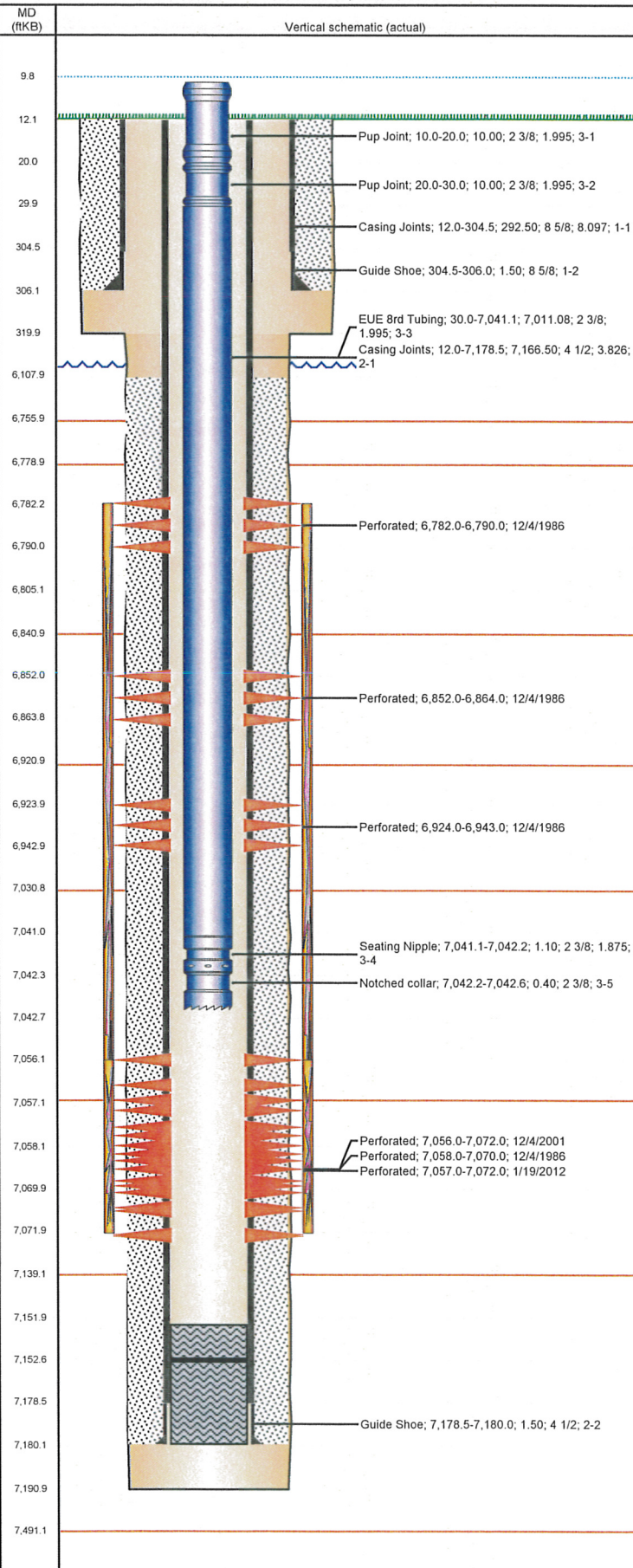


# Frac Wellbore Schematic Report

**Well Name: BEEBE DRAW RG26-15**

VERTICAL - ORIGINAL HOLE, 7/2/2012 1:18:14 PM



## Well Header

API	Business Unit	District	Well Config
05-123-13247	WATTENBERG	15	VERTICAL
Original KB Elevation (ft)	KB - GL / MSL (ftKB)	Spud Date	P & A Date
4,752.00	12.00	11/19/1986	

Comment  
WELL FILE MINIMAL & SKETCHY. MOST OF THE INFO WAS TAKE FROM WELLBORE DIAGRAMS IN FILE & STATE REPORTS.

Directions To Well  
WCR 40 & 47, WEST 0.1, NORTHWEST ON WEST SIDE OF DITCH 0.1, WEST 0.1, NORTH 0.1 INTO.

Current PBTD (ftKB)  
ORIGINAL HOLE - 7,152.6

## Surface Location (Congressional)

Quarter 1	Quarter 2	Quarter 3	Quarter 4	Section	Township	Twnshp N...	Range	Rng E/W Dir
		SW	SE	26	4	N	65	W

## Bottom Hole Location

North-South Distance (ft)	From N or S Line	East-West Distance (ft)	From E or W Line

## Plug Back Total Depths

Date	Depth (ftKB)	Method	Com
11/24/1986	7,096.0	CASED HOLE LOG	DEPTH LOGGER ON CBL
1/19/2012	7,099.4	TAG	C/O, TBG TALLY MEASUREMENT.

## Wellbore Sections

Section Des	Size (in)	Act Top (ftKB)	Act Btm (ftKB)
SURFACE	12 1/4	12.0	320.0
PRODUCTION	7 7/8	320.0	7,191.0

## Zone Statuses

Zone Name	Status Date	Status	Job
CODELL	12/10/1986	PR	DRILLING/COMPLETION - ORIGINAL, 11/19/1986 00:00
CODELL	12/14/2001	PR	RE-FRAC, 12/3/2001 00:00
CODELL	3/9/2012	PR	TRI-FRAC, 1/18/2012 06:00
NIOBRARA	12/10/1986	PR	DRILLING/COMPLETION - ORIGINAL, 11/19/1986 00:00

## Casing Strings

Csg Des	Run Date	OD (in)	Wt/Len (lb/ft)	Grade	Top (ftKB)	Set Depth (ftKB)
Surface	11/19/1986	8 5/8	24.00	?	12.0	306.0
Production	11/24/1986	4 1/2	15.10	?	12.0	7,180.0

## Cement

Des	Top (ftKB)	Btm (ftKB)
SURFACE CASING CEMENT	12.0	306.0
PRODUCTION CASING CEMENT	6,108.0	7,180.0

## Tubing Components

Item Des	OD (in)	Wt (lb/ft)	Grade	Jts	Len (ft)
Pup Joint	2 3/8	4.70	J-55	1	10.00
Pup Joint	2 3/8	4.70	J-55	1	10.00
EUE 8rd Tubing	2 3/8	4.70	J-55	211	7,011.08
Seating Nipple	2 3/8			1	1.10
Notched collar	2 3/8	4.70	J-55	1	0.40

## Perforation Data

Zone	Bnch/St g	Entered Shot Total	Top (ftKB)	Btm (ftKB)	Date
NIOBRARA, ORIGINAL HOLE	A	2	6,782.0	6,790.0	12/4/1986
NIOBRARA, ORIGINAL HOLE	B	5	6,852.0	6,864.0	12/4/1986
NIOBRARA, ORIGINAL HOLE	C	3	6,924.0	6,943.0	12/4/1986
CODELL, ORIGINAL HOLE		64	7,056.0	7,072.0	12/4/2001
CODELL, ORIGINAL HOLE		30	7,057.0	7,072.0	1/19/2012
CODELL, ORIGINAL HOLE		5	7,058.0	7,070.0	12/4/1986

## Stimulations & Treatments

Bnch/St g	Date	Zone	Primary Job Type
	12/6/1986	NIOBRARA-CODELL, ORIGINAL HOLE	DRILLING/COMPLETION - ORIGINAL

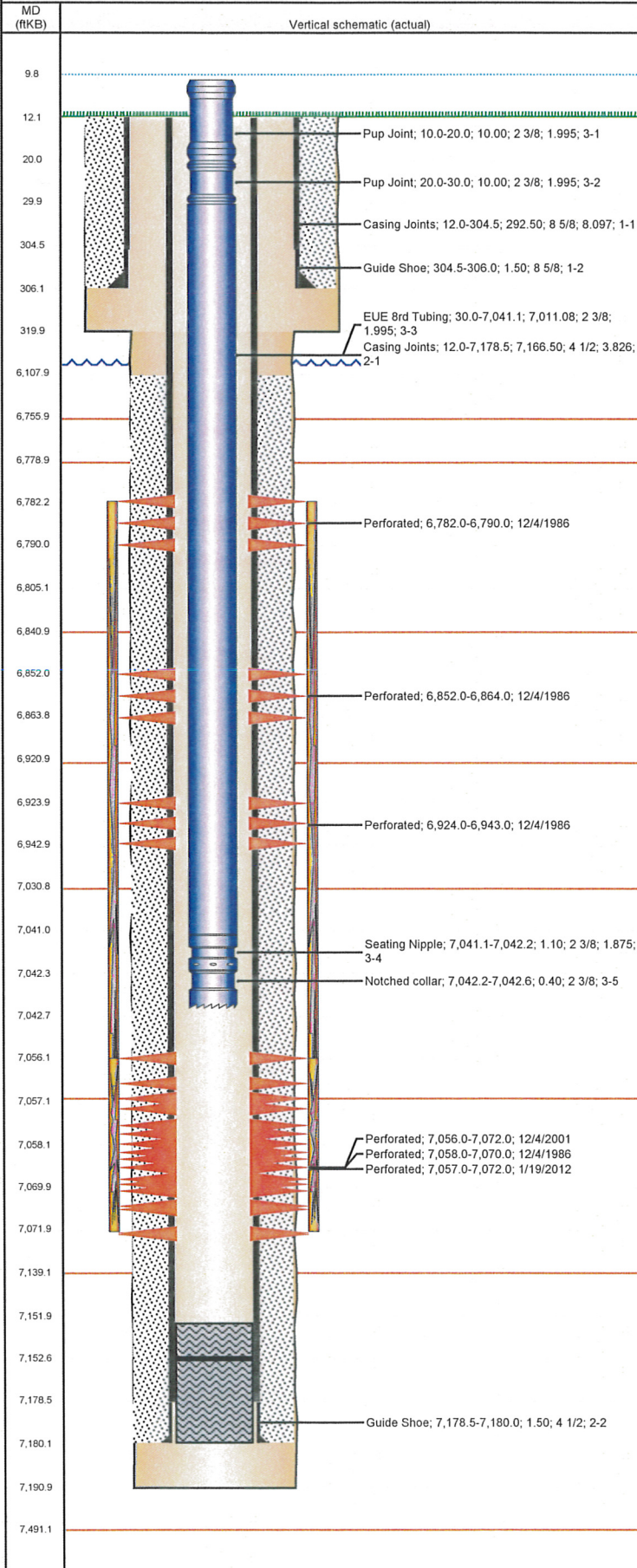
Comment  
C/N LIMITED ENTRY

Total Add Amount	Total Clean Volume...	Vol Slurry Tot (gal)	Vol Gas Tot (MCF)
Proppant Bulk Sand 222000 lb		71442.00	
Avg Treat Pressure (psi)	Max Treat Pressure (psi)	Avg Treat Rate (bbl/min)	Max Treat Rate (bbl/min)
5,400.0	5,900.0		



**Well Name: BEEBE DRAW RG26-15**

VERTICAL - ORIGINAL HOLE, 7/2/2012 1:18:15 PM



## Stimulations & Treatments

Bnch/Stg	Date	Zone	Primary Job Type	
	12/13/2001	CODELL, ORIGINAL HOLE	RE-FRAC	
Comment				
DURING CRF, HAD SIGNS OF NIO COMMUNICATION				
Total Add Amount		Total Clean Volume...	Vol Slurry Tot (gal)	Vol Gas Tot (MCF)
Proppant Ottawa 246940 lb			129696.01	
Avg Treat Pressure (psi)		Max Treat Pressure (psi)	Avg Treat Rate (bbl/min)	Max Treat Rate (bbl/min)
4,350.0		4,790.0	11.00	11.30
Bnch/Stg	Date	Zone	Primary Job Type	
	1/26/2012	CODELL, ORIGINAL HOLE	TRI-FRAC	
Comment				
(COD TRF) JOB WENT AS PLANNED 5 MIN SIP 3155				
Total Add Amount		Total Clean Volume...	Vol Slurry Tot (gal)	Vol Gas Tot (MCF)
Proppant Ottawa 251395.698 lb		130542.72	141978.06	
Avg Treat Pressure (psi)		Max Treat Pressure (psi)	Avg Treat Rate (bbl/min)	Max Treat Rate (bbl/min)
5,757.0		7,100.0	18.90	19.20

## Other In Hole

Run Date	Des	OD (in)	Top (ftKB)	Btm (ftKB)

## Logs

Date	Type	Top (ftKB)	Btm (ftKB)
11/25/1986	COMPENSATED DENSITY	289.0	7,200.0
11/25/1986	INDUCTION	289.0	7,200.0
12/1/1986	CEMENT BOND	289.0	7,200.0