

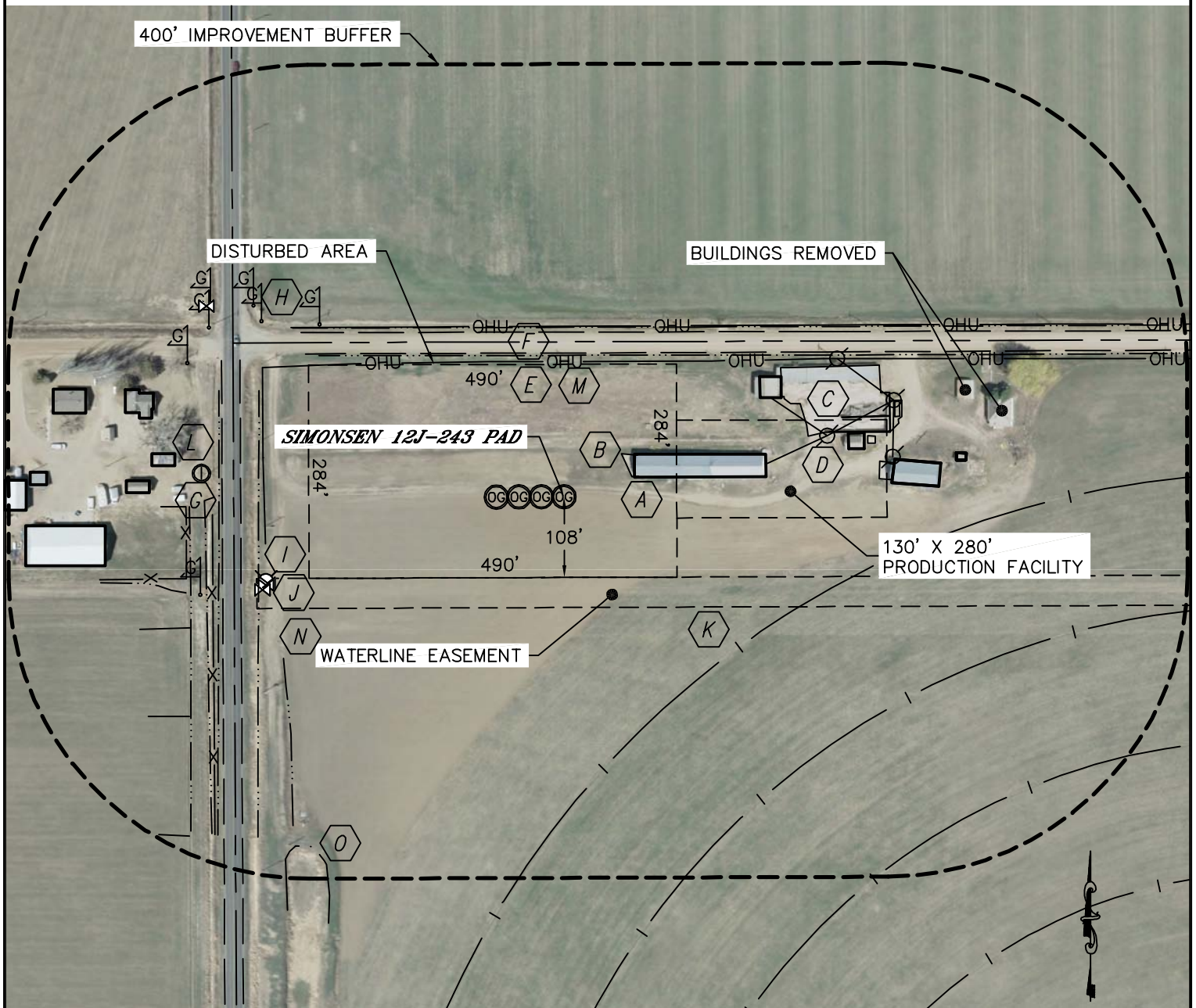


Lat40°, Inc. 1635 Foxtrail Drive, Suite 325 Loveland, CO 970-776-3321

LOCATION DRAWING

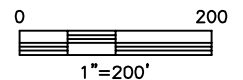
SIMONSEN 12J-243 PAD

SECTION: 12
TOWNSHIP: 6N
RANGE: 67W



IMPROVEMENTS:

(MEASURED FROM PROPOSED SIMONSEN 12J-243 LOCATION)



- | | | |
|--|---|---|
| A BUILDING 97' NE, 292' NE, 437' E, 520' W, 552' NW, 559' NW, 612' SW, 646' NW, 689' W & 716' W | G FENCE 469' & 503' W | L IRRIGATION WELL 484' NW |
| B CONCRETE SLAB 94' & 321' NE | H GAS MARKER 399', 466', 486', 524', 536' & 533' NW, 502' SW | M BARROW DITCH 188' & 226' N, 407' & 460' W |
| C CONCRETE WALL 364' & 385' NE | I FIRE HYDRANT 413' SW | N DITCH 389' W, 431' SW, 499' W, 520' SW, 528' SW, 578' SW & 673' SW |
| D UTILITY POLE 360', 407', 441' & 457' NE | J WATER VALVE 411', 413', & 420' SW, 540' NW | O POND 575' SW |
| E OVERHEAD UTILITY LINE 180' N, 227' N, 272' NE & 399' W | K IRRIGATION PIVOT TRACK 301', 477', & 655' SE | |
| F ROAD 191' N (COUNTY ROAD 72) & 431' W (COUNTY ROAD 23) | | |

NEAREST: BUILDING 97' NE, PUBLIC ROAD 191' N (CR 72),
ABOVE GROUND UTILITY 180' N, RAILROAD 1860' NW (ABANDONED), PROPERTY LINE 206' N

DATE: 5/3/2012
PROJECT#: 2010056