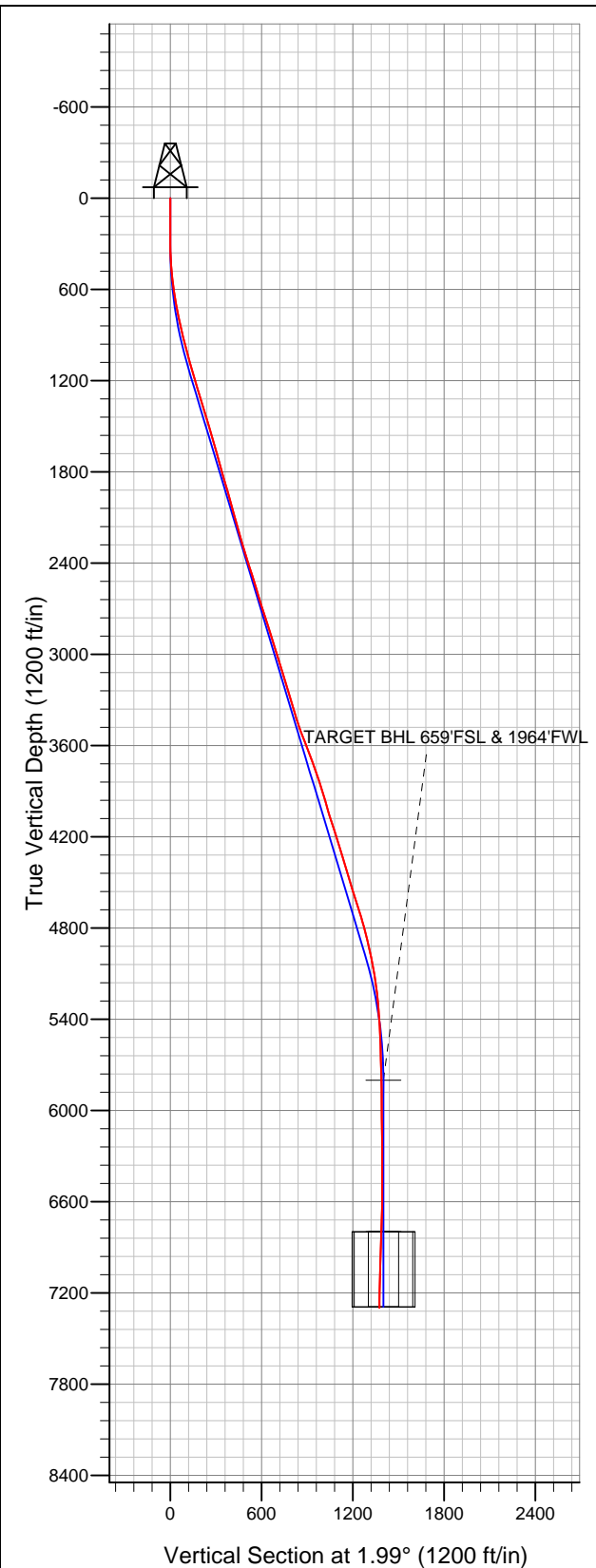


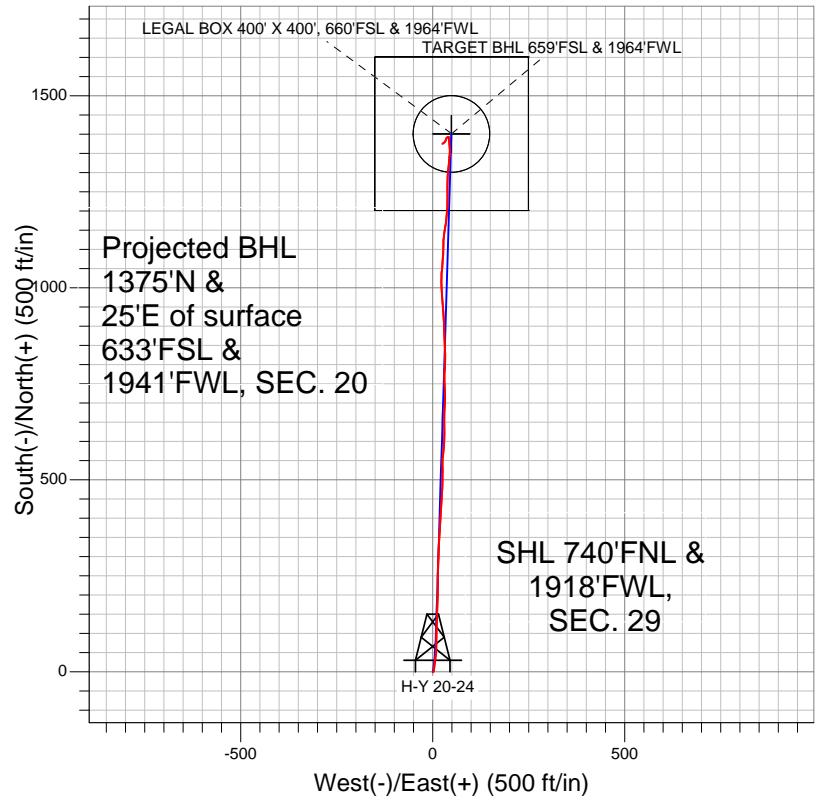
Well Name: H-Y 20-24

Surface Location: H-Y (West) Pad Sec.29-T6N-R67W
 North American Datum 1983 US State Plane 1983Colorado Northern Zone
 Ground Elevation: 4784.0

+N/-S	+E/-W	Northing	Easting	Latitude	Longitude	Slot
0.0	0.0	1412074.06	3161504.44	40.463094	-104.919569	
Original Well Elev			WELL @ 4798.0ft (Original Well Elev)			



Great Western



- LEGEND
- Wellbore #1
 - H-Y 20-24, Wellbore #1, Plan #1 (5-14-12) R V0
 - Survey #1

Final Survey Plot

Projected Final Survey -
 7495'MD & 7298'TVD @ 1375'VS
 1.60 deg Inc 234.00 deg AZ

Project: SEC.29-T6N-R67W
 Site: H-Y (West) Pad Sec.29-T6N-R67W
 Well: H-Y 20-24
 Plan: Wellbore #1



Great Western

SEC.29-T6N-R67W

H-Y (West) Pad Sec.29-T6N-R67W

H-Y 20-24

Wellbore #1

Survey: Survey #1

Standard Survey Report

21 May, 2012

Survey	Wellbore Data									
	Measured Depth (ft)	Inclination (°)	Azimuth (°)	Vertical Depth (ft)	+N/-S (ft)	+E/-W (ft)	Vertical Section (ft)	Dogleg Rate (°/100ft)	Build Rate (°/100ft)	Turn Rate (°/100ft)
Main Survey	0.0	0.00	0.00	0.0	0.0	0.0	0.0	0.00	0.00	0.00
	124.0	0.40	118.20	124.0	-0.2	0.4	-0.2	0.32	0.32	0.00
	215.0	0.60	80.00	215.0	-0.3	1.1	-0.2	0.42	0.22	-41.98
	306.0	1.20	32.90	306.0	0.6	2.1	0.7	0.99	0.66	-51.76
	397.0	3.00	10.90	396.9	3.7	3.1	3.9	2.13	1.98	-24.18
	488.0	5.30	3.00	487.7	10.3	3.8	10.4	2.60	2.53	-8.68
	579.0	7.20	8.50	578.1	20.1	4.8	20.3	2.19	2.09	6.04
	669.0	9.20	7.40	667.2	32.8	6.6	33.0	2.23	2.22	-1.22
	762.0	11.30	5.00	758.7	49.3	8.3	49.5	2.30	2.26	-2.58
	857.0	13.20	2.70	851.6	69.4	9.7	69.7	2.06	2.00	-2.42
	949.0	13.80	359.70	941.0	90.9	10.1	91.2	1.00	0.65	-3.26
	1,044.0	15.60	0.00	1,032.9	115.0	10.0	115.2	1.90	1.89	0.32
	1,139.0	16.30	1.40	1,124.2	141.1	10.4	141.3	0.84	0.74	1.47

Company:	Great Western	Local Co-ordinate Reference:	Well H-Y 20-24
Project:	SEC.29-T6N-R67W	TVD Reference:	WELL @ 4798.0ft (Original Well Elev)
Site:	H-Y (West) Pad Sec.29-T6N-R67W	MD Reference:	WELL @ 4798.0ft (Original Well Elev)
Well:	H-Y 20-24	North Reference:	True
Wellbore:	Wellbore #1	Survey Calculation Method:	Minimum Curvature
Design:	Wellbore #1	Database:	Landmark

Survey										
Measured Depth (ft)	Inclination (°)	Azimuth (°)	Vertical Depth (ft)	+N/-S (ft)	+E/-W (ft)	Vertical Section (ft)	Dogleg Rate (°/100ft)	Build Rate (°/100ft)	Turn Rate (°/100ft)	
1,234.0	16.00	3.70	1,215.5	167.5	11.5	167.8	0.74	-0.32	2.42	
1,329.0	17.80	2.00	1,306.4	195.0	12.9	195.4	1.96	1.89	-1.79	
1,422.0	17.20	0.20	1,395.1	223.0	13.4	223.3	0.87	-0.65	-1.94	
1,516.0	16.50	0.00	1,485.0	250.2	13.5	250.6	0.75	-0.74	-0.21	
1,609.0	16.20	1.40	1,574.3	276.4	13.8	276.7	0.53	-0.32	1.51	
1,704.0	16.10	3.40	1,665.5	302.8	14.9	303.2	0.59	-0.11	2.11	
1,797.0	15.20	1.30	1,755.1	327.9	15.9	328.2	1.14	-0.97	-2.26	
1,891.0	16.10	3.90	1,845.6	353.2	17.1	353.6	1.21	0.96	2.77	
1,985.0	16.50	3.90	1,935.8	379.5	18.9	380.0	0.43	0.43	0.00	
2,080.0	15.00	4.10	2,027.3	405.3	20.7	405.7	1.58	-1.58	0.21	
2,173.0	15.30	1.30	2,117.0	429.5	21.8	430.0	0.85	0.32	-3.01	
2,268.0	15.20	5.80	2,208.7	454.4	23.4	455.0	1.25	-0.11	4.74	
2,363.0	17.10	1.80	2,299.9	480.8	25.1	481.4	2.32	2.00	-4.21	
2,457.0	18.60	0.60	2,389.4	509.6	25.7	510.2	1.64	1.60	-1.28	
2,551.0	17.30	359.00	2,478.8	538.6	25.6	539.1	1.48	-1.38	-1.70	
2,646.0	16.40	6.00	2,569.8	566.0	26.7	566.6	2.33	-0.95	7.37	
2,739.0	17.30	4.80	2,658.8	592.9	29.3	593.5	1.04	0.97	-1.29	
2,834.0	18.50	359.70	2,749.2	622.0	30.4	622.7	2.08	1.26	-5.37	
2,928.0	16.50	359.20	2,838.8	650.3	30.1	650.9	2.13	-2.13	-0.53	
3,024.0	17.70	2.70	2,930.6	678.5	30.6	679.2	1.65	1.25	3.65	
3,118.0	17.40	2.00	3,020.2	706.8	31.8	707.5	0.39	-0.32	-0.74	
3,211.0	17.60	356.90	3,108.9	734.8	31.5	735.4	1.66	0.22	-5.48	
3,305.0	16.50	359.20	3,198.8	762.3	30.5	762.9	1.37	-1.17	2.45	
3,399.0	16.70	4.40	3,288.9	789.1	31.4	789.7	1.59	0.21	5.53	
3,493.0	16.10	0.20	3,379.0	815.6	32.5	816.2	1.41	-0.64	-4.47	
3,587.0	19.60	357.40	3,468.5	844.4	31.8	845.0	3.83	3.72	-2.98	
3,682.0	20.70	358.60	3,557.7	877.1	30.7	877.6	1.24	1.16	1.26	
3,776.0	20.80	356.30	3,645.6	910.4	29.2	910.8	0.87	0.11	-2.45	
3,870.0	20.80	355.50	3,733.5	943.7	26.8	944.0	0.30	0.00	-0.85	
3,964.0	18.30	356.50	3,822.0	975.0	24.6	975.3	2.68	-2.66	1.06	
4,059.0	16.10	357.20	3,912.8	1,003.1	23.0	1,003.3	2.33	-2.32	0.74	
4,153.0	16.10	1.80	4,003.1	1,029.1	22.8	1,029.3	1.36	0.00	4.89	
4,247.0	18.20	6.00	4,092.9	1,056.8	24.7	1,057.0	2.59	2.23	4.47	
4,342.0	17.60	3.00	4,183.3	1,085.9	27.0	1,086.1	1.16	-0.63	-3.16	
4,436.0	17.50	0.20	4,272.9	1,114.2	27.8	1,114.5	0.90	-0.11	-2.98	
4,531.0	17.30	9.40	4,363.6	1,142.4	30.2	1,142.8	2.90	-0.21	9.68	
4,626.0	17.10	7.20	4,454.4	1,170.2	34.3	1,170.7	0.72	-0.21	-2.32	
4,722.0	15.80	5.00	4,546.4	1,197.2	37.2	1,197.8	1.50	-1.35	-2.29	
4,817.0	18.90	359.90	4,637.1	1,225.5	38.3	1,226.1	3.63	3.26	-5.37	
4,913.0	16.70	0.40	4,728.5	1,254.9	38.3	1,255.4	2.30	-2.29	0.52	
5,008.0	14.10	0.40	4,820.1	1,280.1	38.5	1,280.6	2.74	-2.74	0.00	
5,104.0	13.20	6.00	4,913.4	1,302.7	39.7	1,303.3	1.66	-0.94	5.83	
5,199.0	12.00	5.50	5,006.1	1,323.3	41.8	1,323.9	1.27	-1.26	-0.53	
5,294.0	9.50	5.10	5,099.4	1,340.9	43.5	1,341.6	2.63	-2.63	-0.42	
5,390.0	7.10	1.30	5,194.4	1,354.8	44.3	1,355.5	2.56	-2.50	-3.96	
5,484.0	5.40	357.10	5,287.8	1,365.0	44.2	1,365.7	1.87	-1.81	-4.47	
5,580.0	4.00	354.90	5,383.5	1,372.8	43.7	1,373.5	1.47	-1.46	-2.29	
5,674.0	2.60	354.20	5,477.4	1,378.2	43.2	1,378.9	1.49	-1.49	-0.74	
5,770.0	1.90	354.90	5,573.3	1,382.0	42.8	1,382.6	0.73	-0.73	0.73	
5,865.0	1.50	354.80	5,668.2	1,384.8	42.6	1,385.4	0.42	-0.42	-0.11	
5,960.0	1.20	5.80	5,763.2	1,387.0	42.5	1,387.6	0.42	-0.32	11.58	
5,997.0	1.08	6.16	5,800.3	1,387.7	42.6	1,388.4	0.32	-0.32	0.96	
TARGET BHL 659'FSL & 1964'FWL										
6,055.0	0.90	6.90	5,858.2	1,388.7	42.7	1,389.4	0.32	-0.32	1.28	

Company:	Great Western	Local Co-ordinate Reference:	Well H-Y 20-24
Project:	SEC.29-T6N-R67W	TVD Reference:	WELL @ 4798.0ft (Original Well Elev)
Site:	H-Y (West) Pad Sec.29-T6N-R67W	MD Reference:	WELL @ 4798.0ft (Original Well Elev)
Well:	H-Y 20-24	North Reference:	True
Wellbore:	Wellbore #1	Survey Calculation Method:	Minimum Curvature
Design:	Wellbore #1	Database:	Landmark

Survey										
Measured Depth (ft)	Inclination (°)	Azimuth (°)	Vertical Depth (ft)	+N/-S (ft)	+E/-W (ft)	Vertical Section (ft)	Dogleg Rate (°/100ft)	Build Rate (°/100ft)	Turn Rate (°/100ft)	
6,244.0	0.40	0.20	6,047.2	1,390.9	42.9	1,391.5	0.27	-0.26	-3.54	
6,433.0	0.60	324.40	6,236.2	1,392.3	42.3	1,393.0	0.19	0.11	-18.94	
6,623.0	0.70	275.80	6,426.2	1,393.3	40.6	1,393.8	0.29	0.05	-25.58	
6,812.0	1.20	238.60	6,615.1	1,392.3	37.8	1,392.8	0.41	0.26	-19.68	
6,994.4	2.44	198.25	6,797.4	1,387.7	34.9	1,388.0	0.94	0.68	-22.13	
LEGAL BOX 400' X 400', 660'FSL & 1964'FWL - TARGET CIRCLE 659'FSL & 1964'FWL										
7,001.0	2.50	197.60	6,804.0	1,387.4	34.8	1,387.8	0.94	0.84	-9.77	
7,190.0	1.90	214.80	6,992.9	1,380.9	31.8	1,381.2	0.47	-0.32	9.10	
7,380.0	1.50	236.30	7,182.8	1,376.9	27.9	1,377.1	0.39	-0.21	11.32	
7,445.0	1.60	234.00	7,247.8	1,375.9	26.5	1,376.0	0.18	0.15	-3.54	
7,495.0	1.60	234.00	7,297.8	1,375.1	25.4	1,375.1	0.00	0.00	0.00	

Checked By: _____	Approved By: _____	Date: _____
-------------------	--------------------	-------------