
WILLIAMS PRODUCTION RMT INC - EBUS

**RGU 413-24-198
SULPHUR CREEK
Garfield County , Colorado**

Cement Multiple Stages
16-Sep-2011

Post Job Report

The Road to Excellence Starts with Safety

Sold To #: 300721	Ship To #: 2877488	Quote #:	Sales Order #: 8459935
Customer: WILLIAMS PRODUCTION RMT INC - EBUS	Customer Rep: Bascom, Kenny		
Well Name: RGU	Well #: 413-24-198	API/UWI #: 05-103-11616	
Field: SULPHUR CREEK	City (SAP): UNKNOWN	County/Parish: Garfield	State: Colorado
Lat: N 39.947 deg. OR N 39 deg. 56 min. 47.447 secs.	Long: W 108.348 deg. OR W -109 deg. 39 min. 8.752 secs.		
Contractor: FRONTIER	Rig/Platform Name/Num: FRONTIER 10		
Job Purpose: Cement Multiple Stages			
Well Type: Development Well	Job Type: Cement Multiple Stages		
Sales Person: SCOTT, KYLE	Srv Supervisor: TRIPLETT, MICHEAL	MBU ID Emp #: 447908	

Job Personnel

HES Emp Name	Exp Hrs	Emp #	HES Emp Name	Exp Hrs	Emp #	HES Emp Name	Exp Hrs	Emp #
DEUSSEN, EDWARD Eric	15.5	485182	MILLER, KEVIN Paul	15.5	443040	TRIPLETT, MICHEAL Anthony	15.5	447908
WALPOLE, DARREN Livingston	15.5	485294	WILKERSON, JAMES Michael	15.5	496763			

Equipment

HES Unit #	Distance-1 way	HES Unit #	Distance-1 way	HES Unit #	Distance-1 way	HES Unit #	Distance-1 way
10567589C	90 mile	10951246	90 mile	10995027	90 mile	11583915	90 mile

Job Hours

Date	On Location Hours	Operating Hours	Date	On Location Hours	Operating Hours	Date	On Location Hours	Operating Hours
09/16/2011	15.5	5.5						

TOTAL Total is the sum of each column separately

Job

Job Times

Formation Name	Top	Bottom	Called Out	Date	Time	Time Zone
Formation Depth (MD)			On Location	15 - Sep - 2011	20:30	MST
Form Type		BHST	Job Started	16 - Sep - 2011	03:00	MST
Job depth MD	3870. ft	Job Depth TVD	Job Completed	16 - Sep - 2011	07:33	MST
Water Depth		Wk Ht Above Floor	Departed Loc	16 - Sep - 2011	16:33	MST
Perforation Depth (MD)	From	To		16 - Sep - 2011	17:30	MST

Well Data

Description	New / Used	Max pressure psig	Size in	ID in	Weight lbm/ft	Thread	Grade	Top MD ft	Bottom MD ft	Top TVD ft	Bottom TVD ft
-------------	------------	-------------------	---------	-------	---------------	--------	-------	-----------	--------------	------------	---------------

Tools and Accessories

Type	Size	Qty	Make	Depth	Type	Size	Qty	Make	Depth	Type	Size	Qty	Make
Guide Shoe					Packer					Top Plug			
Float Shoe					Bridge Plug					Bottom Plug			
Float Collar					Retainer					SSR plug set			
Insert Float										Plug Container			
Stage Tool										Centralizers			

Miscellaneous Materials

Gelling Agt	Conc	Surfactant	Conc	Acid Type	Qty	Conc	%
Treatment Fld	Conc	Inhibitor	Conc	Sand Type	Size	Qty	

Fluid Data

Stage/Plug #: 1	Fluid #	Stage Type	Fluid Name	Qty	Qty uom	Mixing Density lbm/gal	Yield ft3/sk	Mix Fluid Gal/sk	Rate bbl/min	Total Mix Fluid Gal/sk
-----------------	---------	------------	------------	-----	---------	------------------------	--------------	------------------	--------------	------------------------

Stage/Plug #: 1	Fluid #	Stage Type	Fluid Name	Qty	Qty uom	Mixing Density uom	Yield uom	Mix Fluid uom	Rate uom	Total Mix Fluid uom
-----------------	---------	------------	------------	-----	---------	--------------------	-----------	---------------	----------	---------------------

Stage/Plug #: 1									
Fluid #	Stage Type	Fluid Name	Qty	Qty uom	Mixing Density lbm/gal	Yield ft ³ /sk	Mix Fluid Gal/sk	Rate bbl/min	Total Mix Fluid Gal/sk
1	Fresh Water Spacer		20.00	bbl	8.33			4	
2	1 st Stage Lead Cement	ECONOCEM (TM) SYSTEM (452992)	300.0	sacks	12.8	1.77	9.37	6	9.37
	0.25 lbm	POLY-E-FLAKE (101216940)							
	0.3 %	HR-5, 50 LB SK (100005050)							
	9.37 Gal	FRESH WATER							
3	1st Stage Tail Cement	VARICEM (TM) CEMENT (452009)	486.0	sacks	12.8	1.97	11.07	6	11.07
	0.25 lbm	POLY-E-FLAKE (101216940)							
	11.07 Gal	FRESH WATER							
4	Displacement		298.00	bbl	8.33			6	
5	Fresh Water Spacer		20.00	bbl	8.33			4	
6	2 nd Stage Tail Cement	VARICEM (TM) CEMENT (452009)	912.0	sacks	12.8	1.97	11.07	6	11.07
	0.25 lbm	POLY-E-FLAKE (101216940)							
	11.07 Gal	FRESH WATER							
7	Displacement		135.00	bbl	8.33			3	
Calculated Values		Pressures		Volumes					
Displacement	295.1	Shut In: Instant		Lost Returns	0	Cement Slurry	410	Pad	
Top Of Cement	SURFACE	5 Min		Cement Returns	109	Actual Displacement		Treatment	
Frac Gradient		15 Min		Spacers	20	Load and Breakdown		Total Job	1066
Rates									
Circulating	5	Mixing	6	Displacement	4	Avg. Job	5		
Cement Left In Pipe	Amount	45.41 ft	Reason	Shoe Joint					
Frac Ring # 1 @	ID	Frac ring # 2 @	ID	Frac Ring # 3 @	ID	Frac Ring # 4 @	ID		
The Information Stated Herein Is Correct				Customer Representative Signature					

The Road to Excellence Starts with Safety

Sold To #: 300721		Ship To #: 2877488		Quote #:		Sales Order #: 8459935	
Customer: WILLIAMS PRODUCTION RMT INC - EBUS				Customer Rep: Bascom, Kenny			
Well Name: RGU			Well #: 413-24-198			API/UWI #: 05-103-11616	
Field: SULPHUR CREEK		City (SAP): UNKNOWN		County/Parish: Garfield		State: Colorado	
Legal Description:							
Lat: N 39.947 deg. OR N 39 deg. 56 min. 47.447 secs.				Long: W 108.348 deg. OR W -109 deg. 39 min. 8.752 secs.			
Contractor: FRONTIER			Rig/Platform Name/Num: FRONTIER 10				
Job Purpose: Cement Multiple Stages						Ticket Amount:	
Well Type: Development Well			Job Type: Cement Multiple Stages				
Sales Person: SCOTT, KYLE			Srv Supervisor: TRIPLETT, MICHEAL			MBU ID Emp #: 447908	

Activity Description	Date/Time	Cht #	Rate bbl/min	Volume bbl		Pressure psig		Comments
				Stage	Total	Tubing	Casing	
Call Out	09/15/2011 20:30							
Pre-Convoy Safety Meeting	09/15/2011 23:25							
Crew Leave Yard	09/15/2011 23:30							
Arrive At Loc	09/16/2011 03:00							RIG WAS STILL RUNNING CASING WAITED UNTIL DONE WITH CASING TO RIG UP
Assessment Of Location Safety Meeting	09/16/2011 03:15							COULDN'T SPOT TRUCK UNTIL CASING WAS DONE BEING RAN.
Other	09/16/2011 05:30							SPOT EQUIPMENT, 1 RCM PUMP TRUCK
Pre-Rig Up Safety Meeting	09/16/2011 05:45							GO OVER JSA AND HAVE CREW SIGN
Rig-Up Equipment	09/16/2011 05:50							
Pre-Job Safety Meeting	09/16/2011 07:15							GO OVER JOB PROCEDURES AND SAFETY INFORMATION
Start Job	09/16/2011 07:33							TD:3880', TP:3862.66', SJ:45.41, MW:9.0 PPG, CASING: 9.625 36#, OH: 13.5" TO 1700' THEN 14.75" TO SURFACE. TWO STAGE CEMENT JOB. TOOL SET AT 1740.41', YP:15, PV:13, TEMP: 77
Activity Description	Date/Time	Cht	Rate bbl/min	Volume bbl		Pressure psig		Comments

Sold To # : 300721

Ship To # :2877488

Quote # :

Sales Order # :

8459935

SUMMIT Version: 7.2.27

Friday, September 16, 2011 05:07:00

		#		Stage	Total	Tubing	Casing	
Test Lines	09/16/2011 07:36						3000	PRESSURE TEST PUMPS AND LINES. STARTED AT 3144 PSI ENDED AT 3140 PSI, LOST 4 PSI IN TWO MINUTES.
Pump Spacer	09/16/2011 07:41		4	20			256.0	FRESH WATER
Pump 1st Stage Lead Slurry	09/16/2011 07:51		6	105.2			297.0	300 SACKS MIXED @ 12.8, 1.97 YIELD, 9.37 GALS/SACK.
Pump 1st Stage Tail Slurry	09/16/2011 08:08		6	170.5			292.0	486SACKS MIXED @ 12.8, 1.97 YIELD, 11.07 GALS/SACK
Shutdown	09/16/2011 08:41							
Drop Dart	09/16/2011 08:43							
Pump Displacement	09/16/2011 08:44		6	295.1			800.0	FRESHWATER
Slow Rate	09/16/2011 09:37		2	280.1			640.0	SLOWED RATE LAST 15BBLSTO 4 BBLS/MIN, THEN TO 2 BBLS/MIN LAST 10 BBLS OF DISPLACEMENT
Bump Plug	09/16/2011 09:50			295.1			820.0	BUMP PLUG AND WENT 600PSI OVER TO 1235PSI
Check Floats	09/16/2011 09:53							FLOATS HELD
Drop Opening Device For Multiple Stage Cementer	09/16/2011 09:55							DROP BOMB WAIT 15 MINUTES TO REACH BOTTOM THE PRESSURE UP TO 500 PSI AND OPEN TOOL.
Open Multiple Stage Cementer	09/16/2011 10:08		1	1			150.0	PRESSURED UP TO 500 PSI THEN DROPPED TO 150 PSI.
Circulate Well	09/16/2011 10:09		3	10			150.0	PUMP 10 BBLS TO ESTABLISH CIRCULATION, THEN TURNED OVER TO RIG..
End Job	09/16/2011 10:15							RIG CIRULATED THE WELL AT 5 BBLS/MIN, NO CEMENT RETURNS.
Other	09/16/2011 10:20							WAIT ON 1ST STAGE CEMENT TO SET UP AND

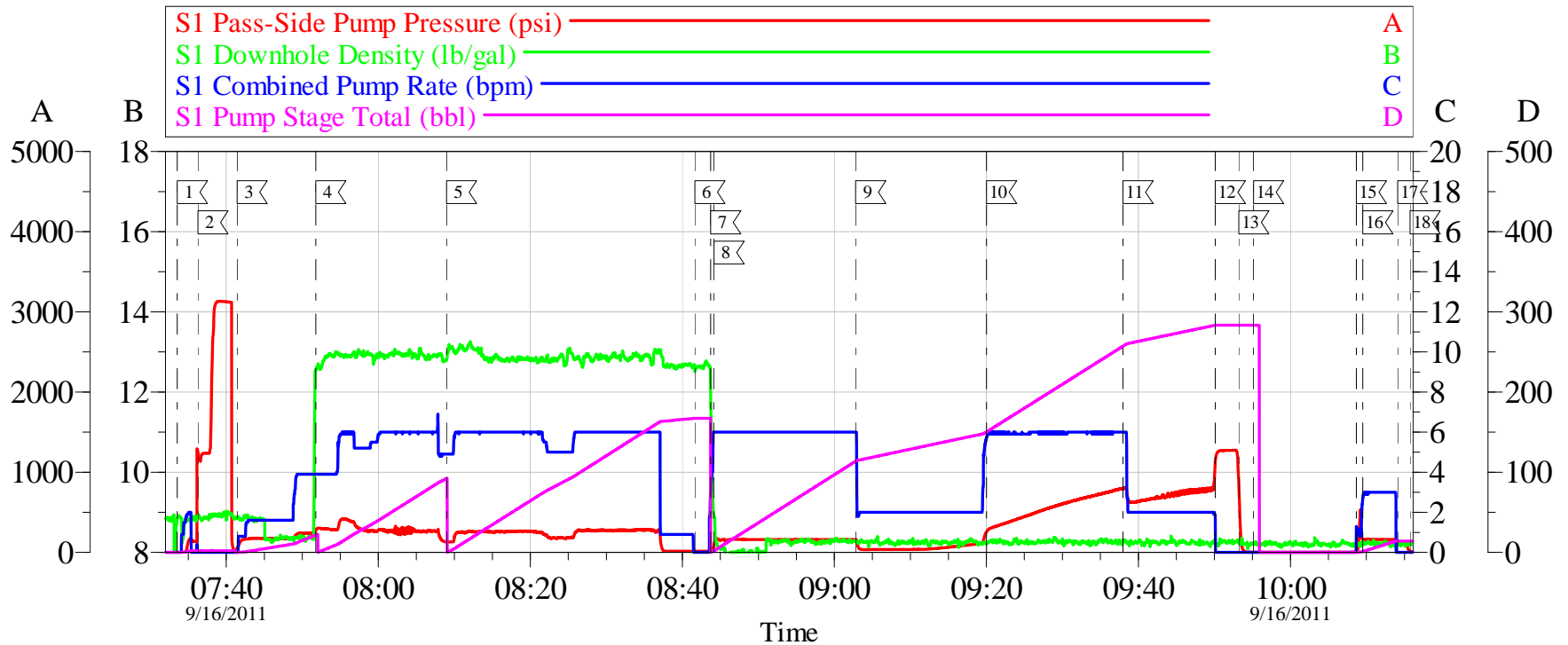
Activity Description	Date/Time	Cht #	Rate bbl/min	Volume bbl		Pressure psig		Comments
				Stage	Total	Tubing	Casing	
Pre-Job Safety Meeting	09/16/2011 14:00							GO OVER JOB PROCEDURES AND SAFETY INFORMATION.
Start Job	09/16/2011 14:10							START SECOND STAGE. TOOL AT 1740.41'
Pressure Test	09/16/2011 14:12						3000.	PRESSURE TEST PUMPS AND LINES. STARTED AT 3154 PSI AND ENDED AT 3172 PSI, LOST 0 PSI IN TWO MINUTES.
Pump Spacer	09/16/2011 14:18		6	20			118.0	FRESHWATER
Pump 2nd Stage Tail Slurry	09/16/2011 14:27		6	320			300.0	912 SACKS MIXED @ 12.8 PPG, 1.97 YIELD, 11.07 GALS/SACK
Shutdown	09/16/2011 15:19							
Drop Plug	09/16/2011 15:23							DROP CLOSING PLUG
Pump Displacement	09/16/2011 15:25		3	134.5			520.0	FRESHWATER
Slow Rate	09/16/2011 15:58		1	124.5			520.0	SLOWRATE LAST 10 BBLS PRIOR TO BUMPING PLUG.
Close Multiple Stage Cementer	09/16/2011 16:28			134.5			1200.	PRESSURE UP ON TOOL, TOOL CLOSED AT 1200 PSI WENT TO 1450 PSI..
Check Floats	09/16/2011 16:32							FLOATS HELD
End Job	09/16/2011 16:33							HAD GOOD CIRCULATION THROUGHOUT JOB. GOT CEMENT RETURNS WITH 10 BBLS AWAY ON DISPLACEMENT. GOT 110 BBLS OF CEMENT TO SURFACE. NO SUGAR USED. BOOSTER PUMP NOT USED.
Post-Job Safety Meeting (Pre Rig-Down)	09/16/2011 16:40							
Rig-Down Equipment	09/16/2011 16:45							

Cementing Job Log

Activity Description	Date/Time	Cht #	Rate bbl/ min	Volume bbl		Pressure psig		Comments
				Stage	Total	Tubing	Casing	
Pre-Convoy Safety Meeting	09/16/2011 17:25							
Crew Leave Location	09/16/2011 17:30							THANKS FOR USING HALLIBURTON MIKE TRIPLETT AND CREW

WILLIAMS

1ST STAGE SURFACE RGU 413-24-198



Local Event Log

1 START JOB	07:33:33	2 PRESSURE TEST	07:36:16
3 START FRESHWATER SPACER	07:41:25	4 START LEAD CEMENT	07:51:46
5 START TAIL CEMENT	08:08:58	6 SHUTDOWN	08:41:39
7 DROP DART	08:43:44	8 START DISPLACEMENT	08:44:10
9 SLOWRATE PRIOR TO GOING THROUGH TOOL	09:02:49	10 BRINGRATE BACK UP	09:20:01
11 SLOWRATE	09:37:58	12 BUMP PLUG	09:50:06
13 CHECK FLOATS	09:53:12	14 DROP BOMB	09:55:09
15 PRESSURE UP ON TOOL	10:08:40	16 PUMP 10 BBLS	10:09:31
17 SHUTDOWN	10:14:06	18 END JOB	10:15:44

Customer: WILLIAMS
Well Description: RGU 413-24-198
ADC USED: YES

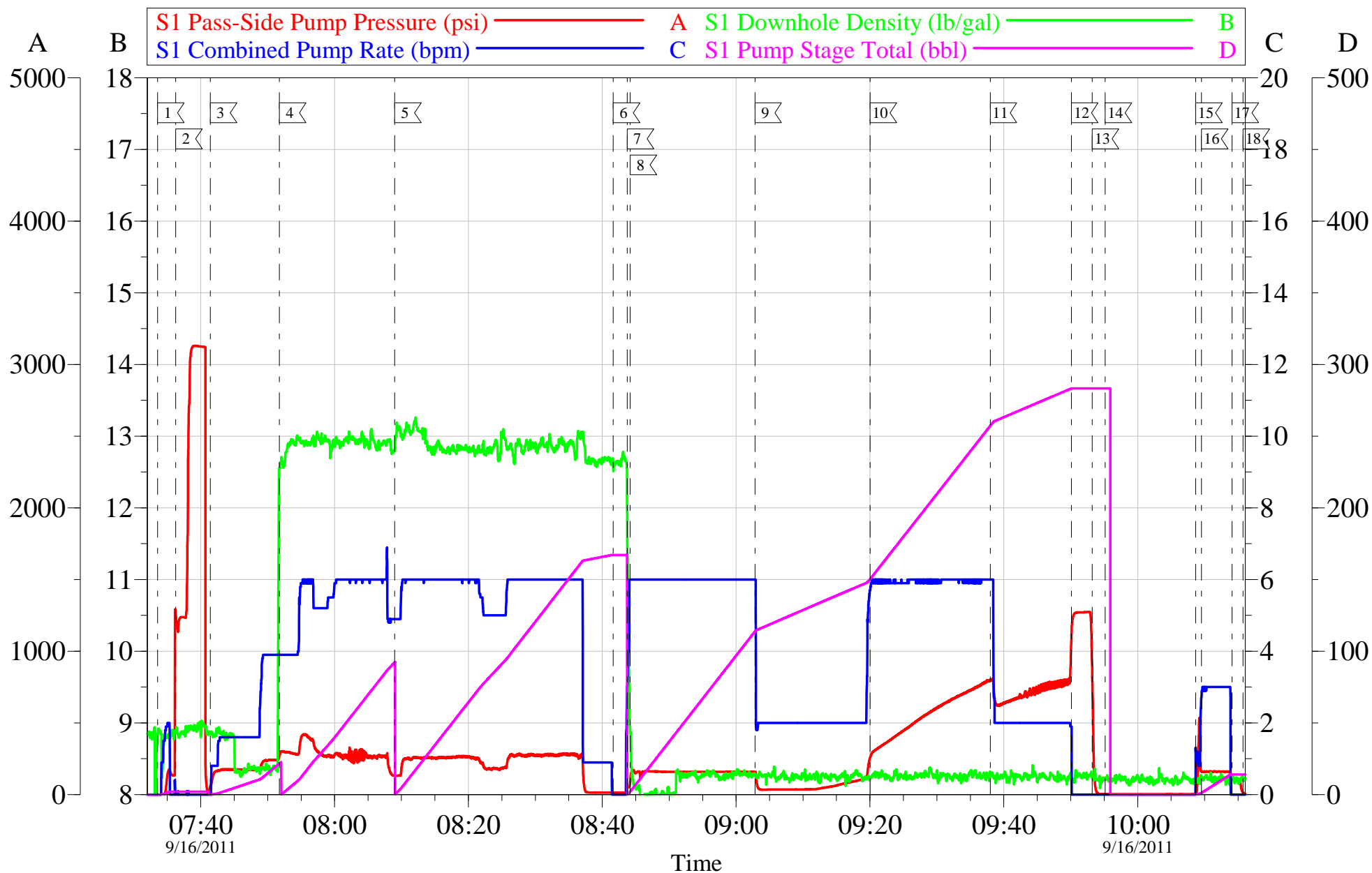
Job Date: 16-Sep-2011
JOB TYPE: 2 STAGE SURFACE
SERVICE SUPERVISOR: MIKE TRIPLETT

Sales Order #: 8459935
COMPANY REP: KENNY BASCOM
ELITE/OPERATER 3/ ED DEUSSEN

OptiCem v6.4.9
16-Sep-11 11:35

WILLIAMS

1ST STAGE SURFACE RGU 413-24-198

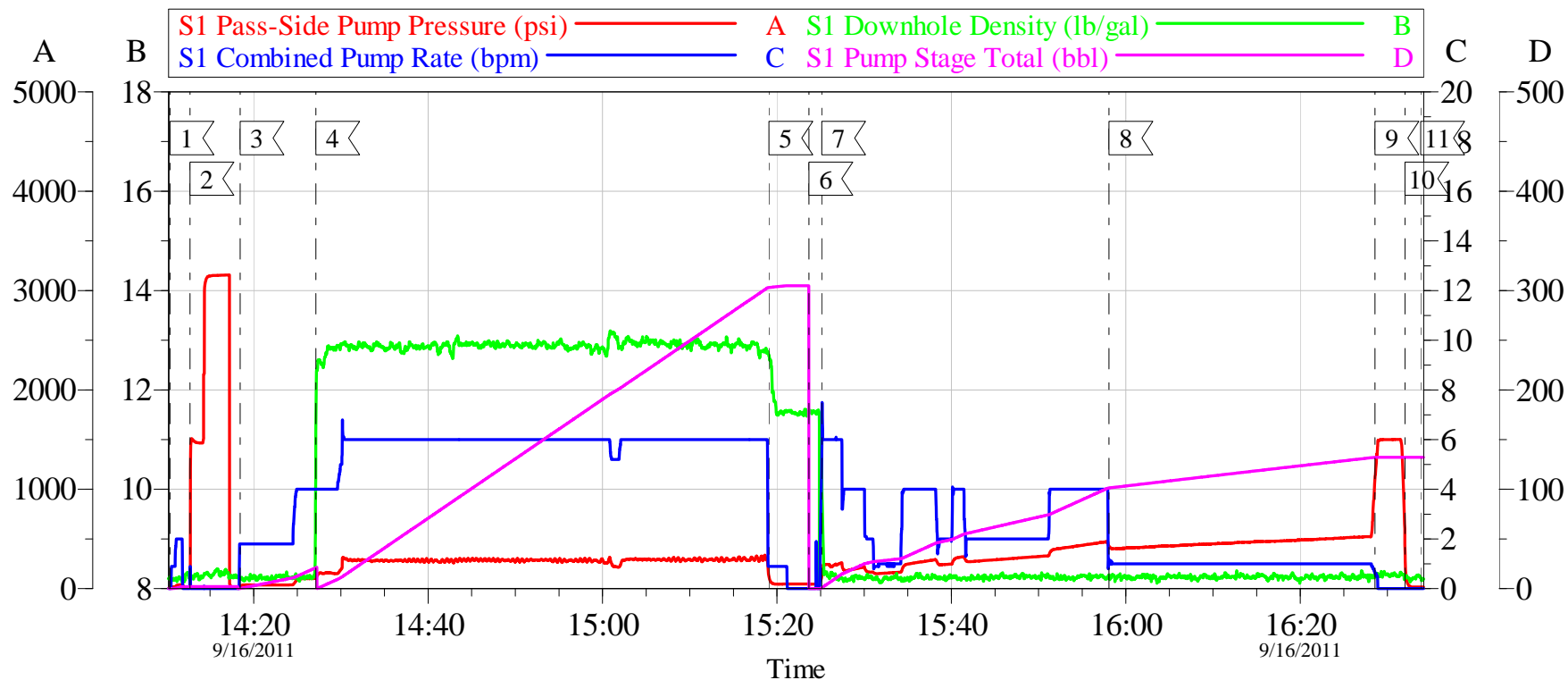


Customer:	WILLIAMS	Job Date:	16-Sep-2011	Sales Order #:	8459935
Well Description:	RGU 413-24-198	JOB TYPE:	2 STAGE SURFACE	COMPANY REP:	KENNY BASCOM
ADC USED:	YES	SERVICE SUPERVISOR:	MIKE TRIPLET	ELITE/OPERATER	3/ ED DEUSSEN

OptiCem v6.4.9
16-Sep-11 11:37

WILLIAMS

2ND STAGE SURFACE RGU 413-24-198



Local Event Log

1	START JOB	14:10:24	2	PRESSURE TEST	14:12:42
3	START FRESHWATER SPACER	14:18:26	4	START TAIL CEMENT	14:27:07
5	SHUTDOWN	15:19:05	6	DROP CLOSING PLUG	15:23:40
7	START DISPLACEMENT	15:25:08	8	SLOWRATE	15:58:05
9	CLOSE TOOL	16:28:34	10	CHECK FLOATS	16:32:01
11	END JOB	16:33:49			

Customer: WILLIAMS
Well Description: RGU 413-24-198
ADC USED: YES

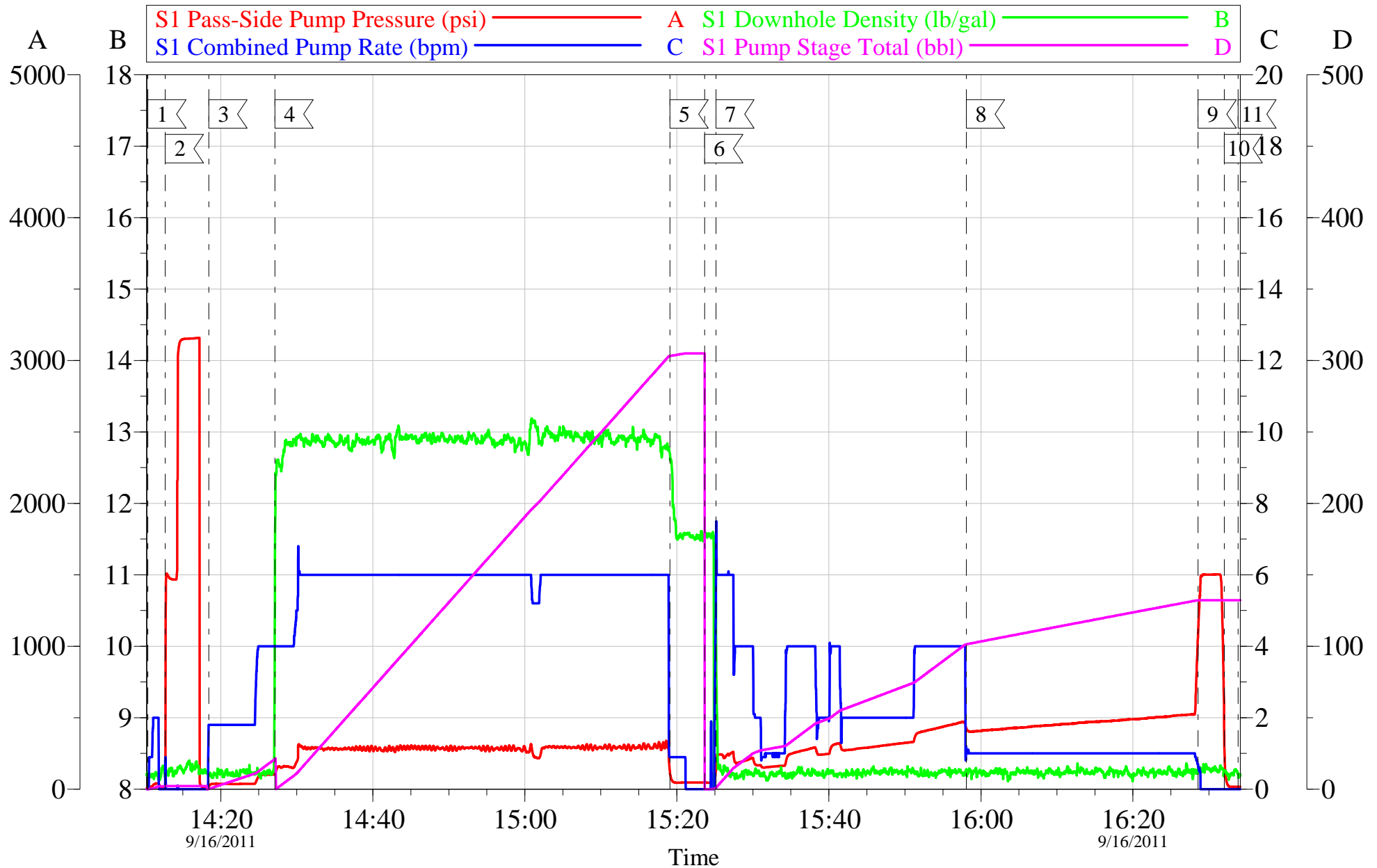
Job Date: 16-Sep-2011
JOB TYPE: SURFACE 2ND STAGE
SERVICE SUPERVISOR: MIKE TRIPLETT

Sales Order #: 8459935
COMPANY REP: KENNY BASCOM
ELITE/OPERATER 3/ ED DEUSSEN

OptiCem v6.4.9
16-Sep-11 16:42

WILLIAMS

2ND STAGE SURFACE RGU 413-24-198



Customer:	WILLIAMS	Job Date:	16-Sep-2011	Sales Order #:	8459935
Well Description:	RGU 413-24-198	JOB TYPE:	SURFACE 2ND STAGE	COMPANY REP:	KENNY BASCOM
ADC USED:	YES	SERVICE SUPERVISOR:	MIKE TRIPLETT	ELITE/OPERATER	3/ ED DEUSSEN

OptiCem v6.4.9
16-Sep-11 16:43

HALLIBURTON

Water Analysis Report

Company: WILLIAMS
Submitted by: MIKE TRIPLETT
Attention: LAB
Lease: RGU
Well #: 413-24-198

Date: 12/21/2010
Date Rec.: 9/16/2011
S.O.#: 8459935
Job Type: SURFACE

Specific Gravity	<i>MAX</i>	<i>1</i>
pH	<i>8</i>	<i>9</i>
Potassium (K)	<i>5000</i>	<i>250</i> Mg / L
Calcium (Ca)	<i>500</i>	<i>0</i> Mg / L
Iron (FE2)	<i>300</i>	<i>0</i> Mg / L
Chlorides (Cl)	<i>3000</i>	<i>425</i> Mg / L
Sulfates (SO ₄)	<i>1500</i>	<i>-200</i> Mg / L
Chlorine (Cl ₂)		<i>0</i> Mg / L
Temp	<i>40-80</i>	<i>50</i> Deg
Total Dissolved Solids		<i>50</i> Mg / L

Respectfully: MIKE TRIPLETT

Title: CEMENTING SUPERVISOR

Location: Grand Junction, CO

NOTICE:

This report is limited to the described sample tested. Any person using or relying on this report agrees that Halliburton shall not be liable for any loss or damage whether due to act or omission resulting from such report or

Sales Order #: 8459935	Line Item: 10	Survey Conducted Date: 9/16/2011
Customer: WILLIAMS PRODUCTION RMT INC - EBUS		Job Type (BOM): CMT MULTIPLE STAGES BOM
Customer Representative: KENNY BACOM		API / UWI: (leave blank if unknown) 05-103-11616
Well Name: RGU		Well Number: 413-24-198
Well Type: Development Well	Well Country: United States of America	
H2S Present:	Well State: Colorado	Well County: Garfield

Dear Customer,

We hope that you were satisfied with the service quality of this job performed by Halliburton. It is the aim of our management and service personnel to deliver equipment and service of a standard unmatched in the service sector of the energy industry.

Please take the time to let us know if our performance met with your satisfaction. Please be as critical as possible to ensure we constantly improve our service. Your comments are of great value to us and are intended for the exclusive use of Halliburton.

CUSTOMER SATISFACTION SURVEY

CATEGORY	CUSTOMER SATISFACTION RESPONSE	
Survey Conducted Date	The date the survey was conducted	9/16/2011
Survey Interviewer	The survey interviewer is the person who initiated the survey.	MICHEAL TRIPLETT (HB15721)
Customer Participation	Did the customer participate in this survey? (Y/N)	Yes
Customer Representative	Enter the Customer representative name	KENNY BACOM
HSE	Was our HSE performance satisfactory? Circle Y or N	Yes
Equipment	Were you satisfied with our Equipment? Circle Y or N	Yes
Personnel	Were you satisfied with our people? Circle Y or N	Yes
Customer Comment	Customer's Comment	
Job DVA	Did we provide job DVA above our normal service today? Circle Y or N	Yes
Time	Please enter hours in decimal format to nearest quarter hour.	0
Other	Enter short text for other efficiencies gained.	N/A
Customer Initials	Customer's Initials	BB
Please provide details	Please describe how the job efficiencies were gained.	N/A

CUSTOMER SIGNATURE