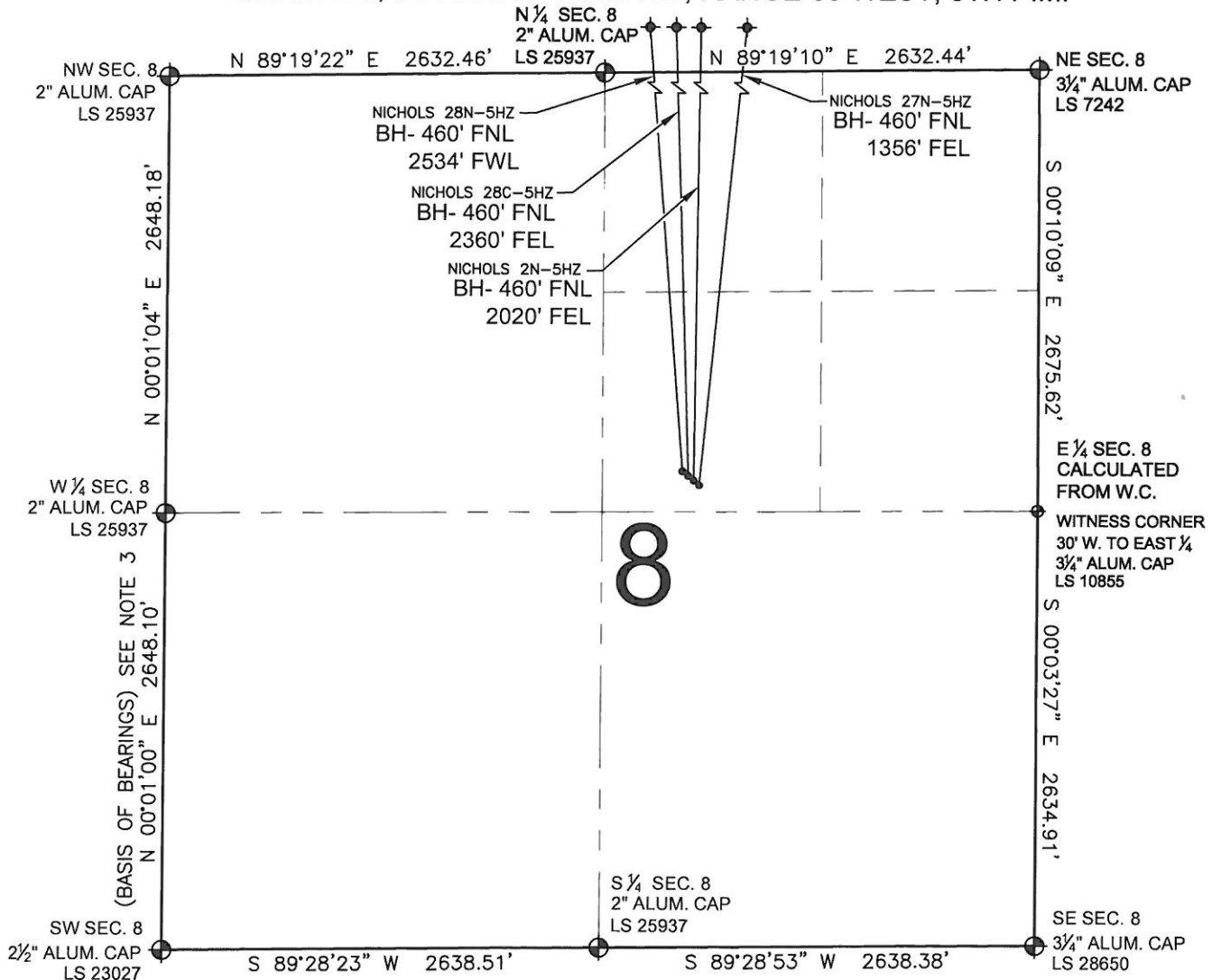


PAD DRAWING: NICHOLS 4 PAD SWNE

SECTION 8, TOWNSHIP 2 NORTH, RANGE 65 WEST, 6TH P.M.

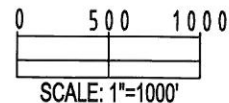


NOTES:

NICHOLS 28N-5HZ TO BE AT 2452' FNL, 2127' FEL.
BOTTOM HOLE AT 460' FNL & 2534' FWL.
NICHOLS 28C-5HZ TO BE AT 2469' FNL, 2102' FEL.
BOTTOM HOLE AT 460' FNL & 2360' FEL.
NICHOLS 2N-5HZ TO BE AT 2486' FNL, 2077' FEL.
BOTTOM HOLE AT 460' FNL & 2020' FEL.
NICHOLS 27N-5HZ TO BE AT 2504' FNL, 2053' FEL.
BOTTOM HOLE AT 460' FNL & 1356' FEL.

LEGEND

⊕ = EXISTING MONUMENT ♦ = BOTTOM HOLE BH= BOTTOM HOLE
● = PROPOSED WELL ◆ = EXISTING WELL



NOTES:

1. THIS FIELD SURVEY CONFORMS TO THE MINIMUM STANDARDS SET BY THE C.O.G.C.C., RULE NO. 215
2. HORIZONTAL POSITIONS AND ORTHOMETRIC ELEVATIONS SHOWN AT THE WELL HEAD, ARE BASED ON GPS-RTK POSITIONS DERIVED FROM MINIMUM 2-HOUR STATIC OBSERVATIONS CORRECTED BY THE NATIONAL GEODETIC SURVEY ONLINE POSITIONING USER SERVICE, O.P.U.S. DATUM: HORIZONTAL = NAD83/2007, VERTICAL = NAVD88
3. THE BASIS OF BEARINGS ARE STATE PLANE COORDINATE SYSTEM GRID BEARINGS SHOWN HEREON BETWEEN THE DESCRIBED THE MONUMENTS SHOWN HEREON.
4. GRID DISTANCES ARE SHOWN, AS MEASURED IN THE FIELD, WITH TIES TO WELLS MEASURED PERPENDICULAR TO SECTION LINES.

PREPARED BY:

PFS

Petroleum Field Services, LLC
1801 W. 13th Ave.
Denver, CO 80204



KERR-MCGEE OIL & GAS ONSHORE LP

FIELD DATE:
03-15-12

PAD NAME:
NICHOLS 4 PAD SWNE

DRAWING DATE:
03-20-12

SURFACE LOCATION:
WELD COUNTY, COLORADO

BY:
KAG

SW 1/4 NE 1/4, SEC. 8, T2N, R65W, 6TH P.M.

