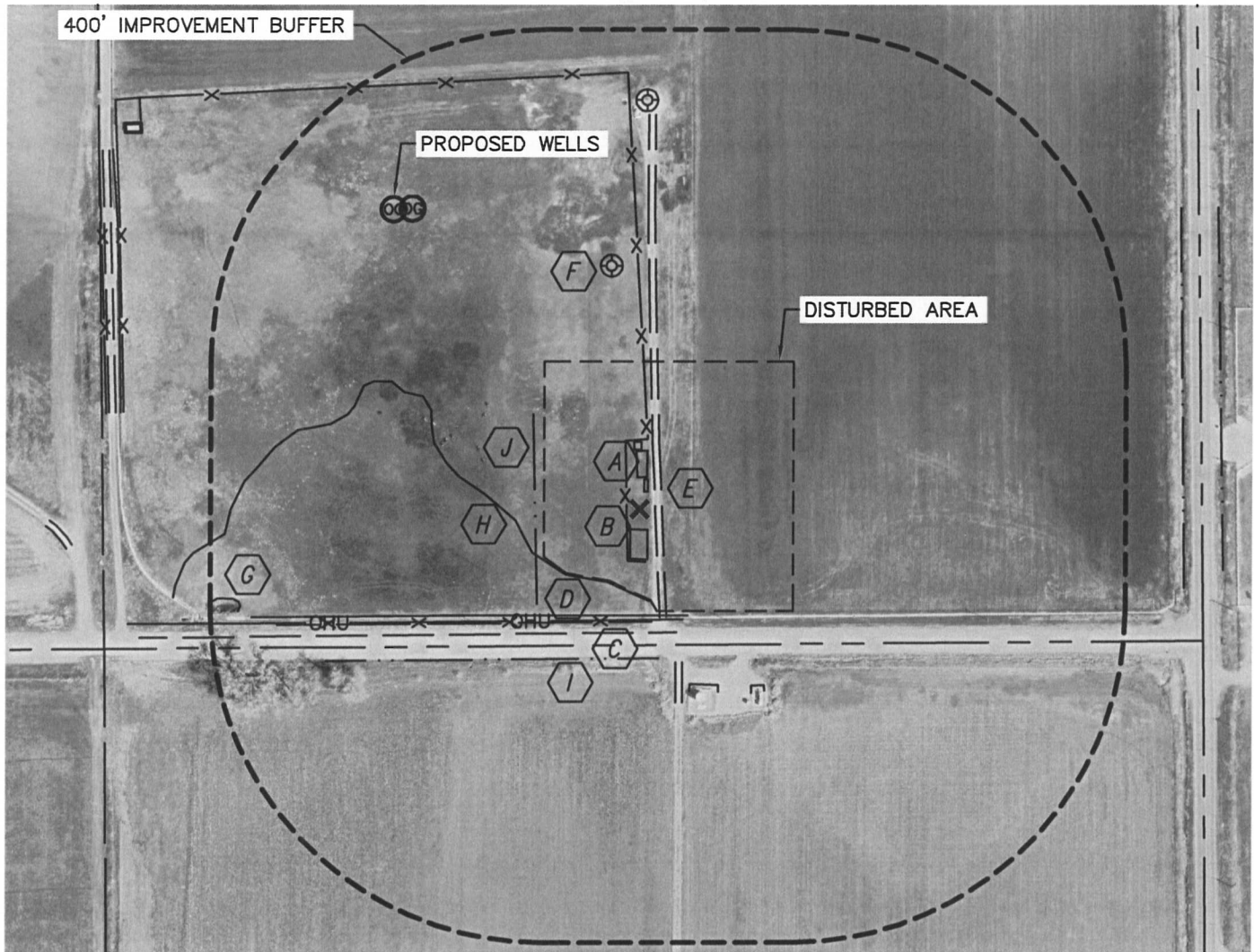


Lat40°, Inc. 1635 Foxtrail Drive, Suite 325 Loveland, CO 970-776-3321

PRODUCTION FACILITY LOCATION DRAWING

BETZ PC G16-69HN, G09-22D

SECTION: 9
TOWNSHIP: 4N
RANGE: 65W



IMPROVEMENTS:

REFERENCE POINT LOCATION:

LATITUDE: 40.32016°N

LONGITUDE: 104.66102°W

ELEV: 4721'

PDOP: 1.7

DATE: 10/4/11

OPERATOR: KYLE RUTZ

1/41/4: SE1/4SE1/4

FSL: 164'

FEL: 677'

DISTANCE TO WELL: 454'

ASSOCIATED NEW WELLS:

BETZ PC G16-69HN,

BETZ PC G09-22D

ASSOCIATED EXISTING WELLS:

BETZ PC G10-33D



EXISTING PRODUCTION EQUIPMENT (NOBLE) 25' S, 22' N, 219' SE, 252' SE



FENCE 15' W, 63' S, 84' N, 526' N, 136' S



COUNTY ROAD 46 149' S



OVERHEAD UTILITY 133' S



FIELD ROAD 19' E, 191' SE



EX. WELL 295' NW, 493' N



POND 494' SW



WET AREA PER SAVAGE DRAWING 96' SW



BARROW DITCH 180' S



DITCH 126' W, 128' S

LEGEND

✕ - REFERENCE POINT
ALL DISTANCES ARE APPROXIMATE.

NEAREST: BUILDING 752' NW,
PUBLIC ROAD (CR 46) 149' S, ABOVE GROUND UTILITY 133' S,
RAILROAD 5280'+, PROPERTY LINE 164' S

