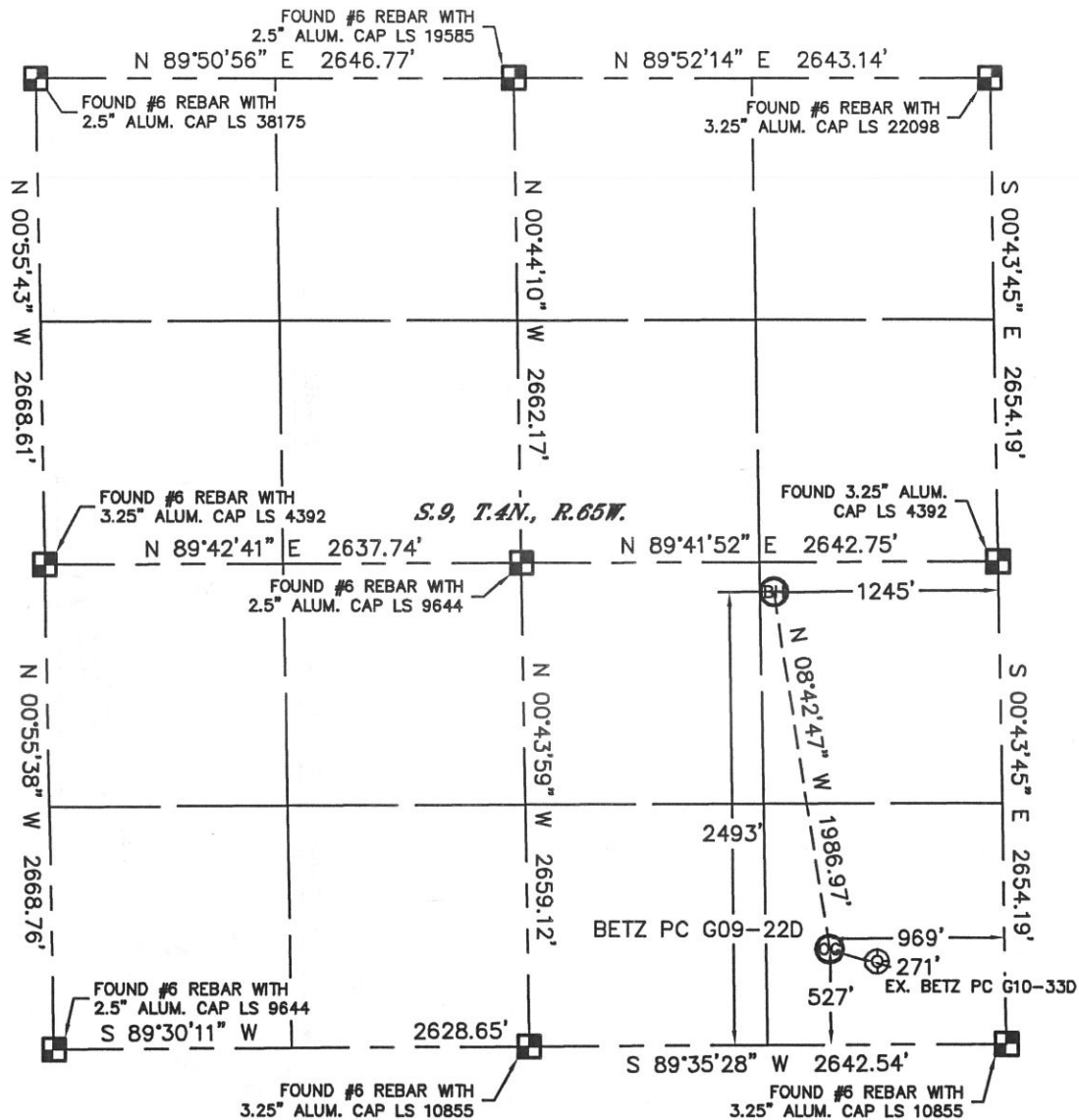


WELL LOCATION CERTIFICATE

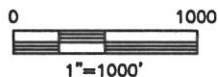
THIS MAP DOES NOT REPRESENT A BOUNDARY SURVEY

SECTION: 9
TOWNSHIP: 4N
RANGE: 65W



In accordance with a request from Ryan Hawkins with Noble Energy Inc. Lat40°, Inc. has determined the surface location of the BETZ PC G09-22D to be 527' from the SOUTH line and 969' from the EAST line and the bottom hole to be 2493' from the SOUTH line and 1245' from the EAST line as measured at right angles from the section lines of Section 9, Township 4 North, Range 65 West of the Sixth Principal Meridian, County of Weld, State of Colorado.

I hereby state that this Well Location Certificate was prepared by me, or under my direct supervision, that the fieldwork was completed on 10/4/11, for and on behalf of Noble Energy Inc. That this is not a Land Survey Plat or an Improvement Survey Plat, and that it is not to be relied upon for establishment of fence, building, or other future improvement lines.



NOTE:

- 1) Bearings shown are Grid Bearings of the Colorado State Plane Coordinate System, North Zone, North American Datum 1983/2007. The lineal dimensions as contained herein are based upon the "U.S. Survey Foot."
- 2) Ground elevations are based on an observed GPS elevation (NAVD 1988 DATUM).
- 3) NEAREST EXISTING WELL: BETZ PC G10-33D, 271'
- 4) IMPROVEMENTS: See LOCATION DRAWING for all visible improvements within 400' of disturbed area.
- 5) SURFACE USE: PASTURE
- 6) INSTRUMENT OPERATOR: KYLE RUTZ

SURFACE LOCATION
LATITUDE: 40.32116°N
LONGITUDE: 104.66208°W
PDOP: 0.8
ELEV: 4719'
1/4, 1/4: SE1/4SE1/4
NEAREST PROPERTY LINE: 352' WEST

BOTTOM HOLE
LATITUDE: 40.32656°N
LONGITUDE: 104.66309°W

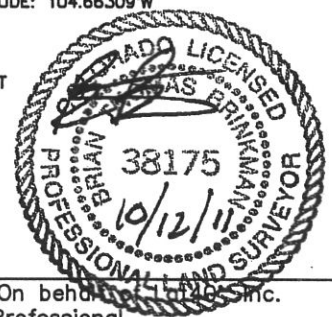
NOTE

According to Colorado law, you must commence any legal action based upon any defect in this W.L.C. within three years after you discover such defect. In no event, may any action based upon any defect in this survey be commenced more than ten years after the date of the certificate shown hereon. (13-80-105 C.R.S.)

LEGEND

- = ALIQUOT MONUMENT AS DESCRIBED
- = CALCULATED POSITION

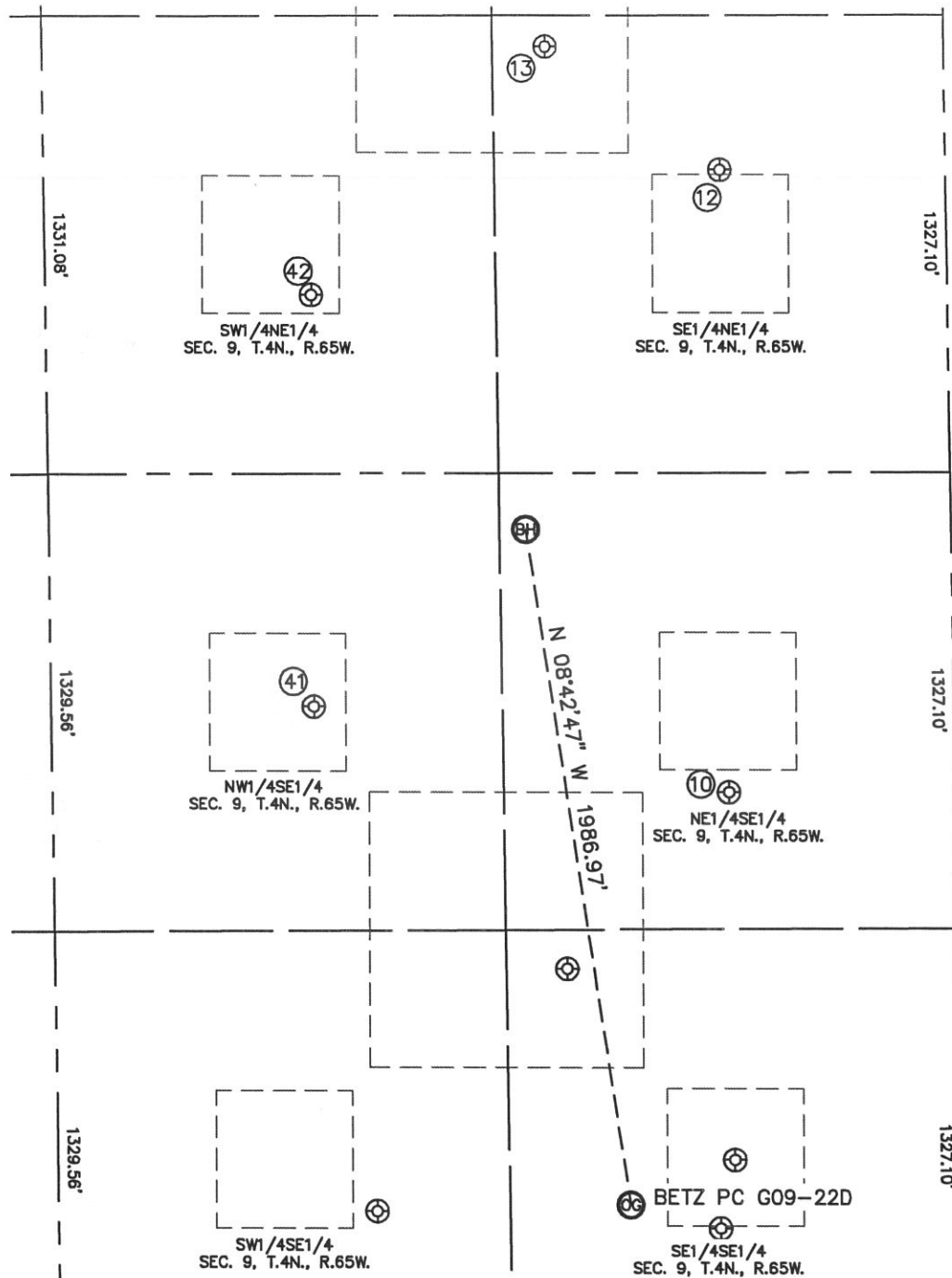
Brian T. Brinkman—On behalf of Lat40°, Inc.
Colorado Licensed Professional
Land Surveyor No. 38175
PROJECT#: 2011275



SITE SKETCH

BETZ PC G09-22D

SECTION: 9
TOWNSHIP: 4N
RANGE: 65W



⑩

BETZ 1
NE1/4SE1/4
1726' FSL
662' FEL
LAT-40.32445°N
LONG-104.66099°W
PDOP: 2.0
ELEV: 4706'

⑫

BETZ 9-14
SE1/4NE1/4
1777' FNL
660' FEL
LAT-40.32941°N
LONG-104.66100°W
PDOP: 2.1
ELEV: 4689'

⑬

BETZ 9-15
SE1/4NE1/4
1419' FNL
1168' FEL
LAT-40.33041°N
LONG-104.66283°W
PDOP: 1.3
ELEV: 4687'

④①

RUPERT 1
NW1/4SE1/4
1981' FSL
1875' FEL
LAT-40.32516°N
LONG-104.66534°W
PDOP: 4.6
ELEV: 4717'

④②

RUPERT 32-9
SW1/4NE1/4
2141' FNL
1865' FEL
LAT-40.32844°N
LONG-104.66532°W
PDOP: 2.9
ELEV: 4697'

