

NOBLE ENERGY INC.

SPIKE STATE D22-10

NWSE 12-3N-64W

2000' FSL & 2150' FEL

Weld County, Colorado

Wattenberg

CURRENT WELLBORE SCHEMATIC with PROPOSED P&A

6/22/2012

API: 05-123-16067
COGCC #

GL Elev: 4821
KB Elev: 4834

Spud Date: 8/31/1992

Surface Casing :

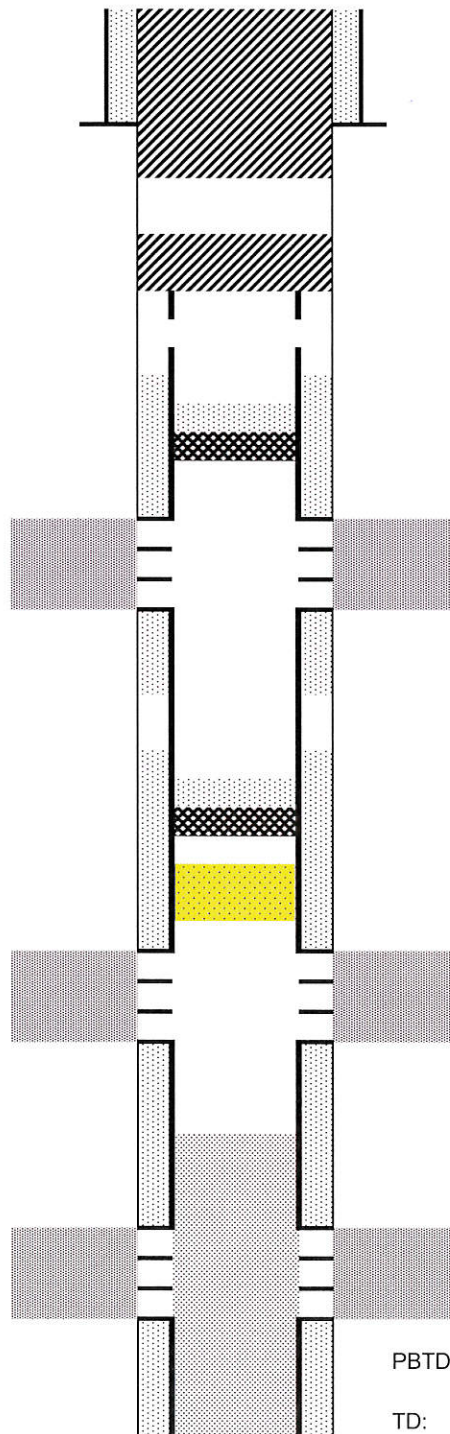
8-5/8" 24# @ 563' (13jts)
Cement: 390SX
TOC: Surface

TOC @ 3450' (squeeze)

TOC @ 6194' (tail)

Production Casing :

3-1/2" 9.2# J-55 @ 7151' (234jts)
Cement: 410sx + 227sx (09/04/92)
TD: 09/04/92



Cut surface casing off 4'-6' below surface.

Pump approx 275 sx shoe plug @ 620' (WILL TAG)
Will cement to surface after tag.

Pump 100 sx stub plug @ 3300'
Cut and pull casing @ 3300'

Circulating Perfs: 3438'

CIBP 2 @ 4280' w/ 2 sx cement on top

Sussex Perfs: 4382'- 4434' (15 holes)

CIBP 1 @ 6570' w/ 2 sx cement on top

Fish 6670'-6673'

Niobrara Perfs: 6746'- 6762' (64 holes)

Tagged Sand Plug @ 6825'

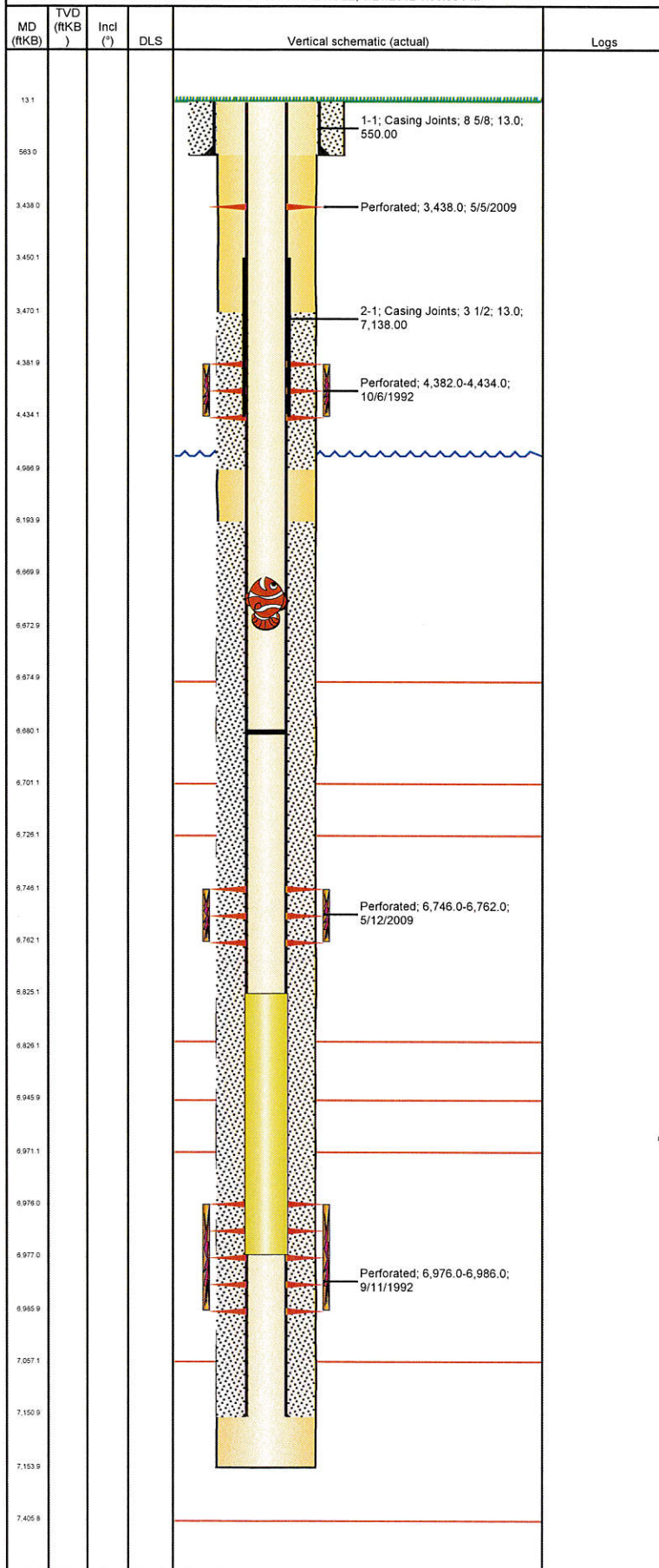
Codell Perfs: 6976'-6986' (40 holes)

PBTD: 7147'

TD: 7154'

Well Name: SPIKE STATE D22-10

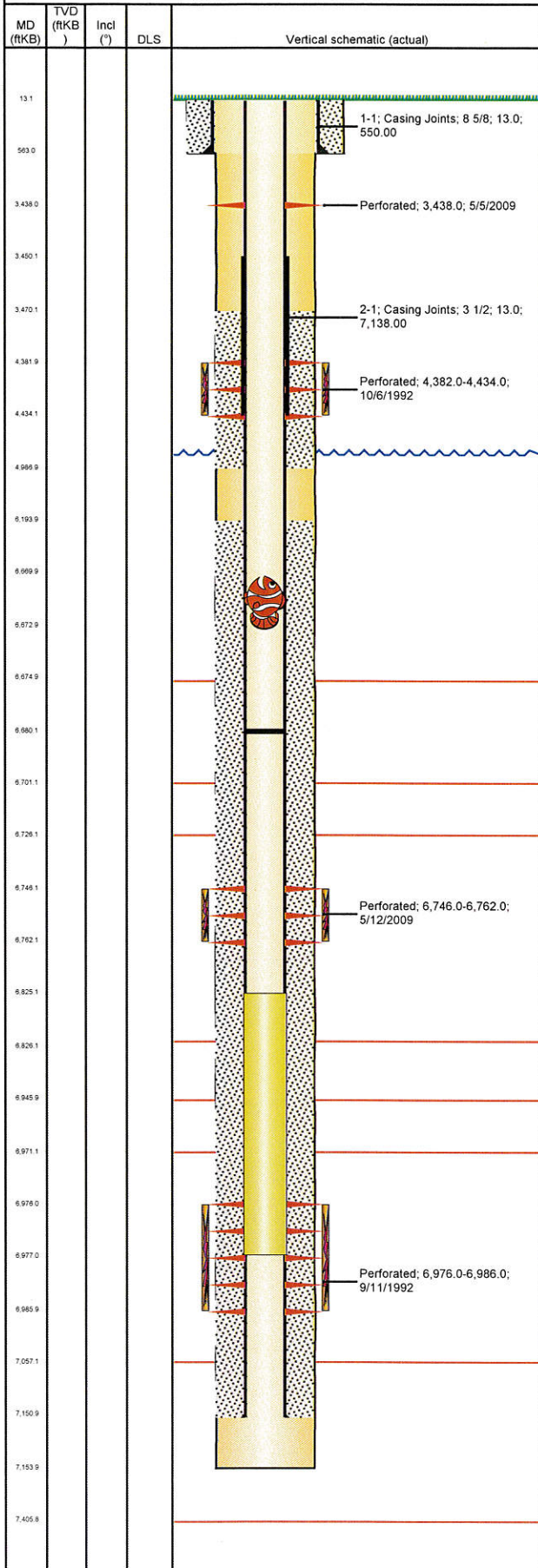
VERTICAL - ORIGINAL HOLE, 6/21/2012 1:56:00 PM



Well Header									
API 05-123-16067		Business Unit WATTENBERG			District 15		Well Config VERTICAL		
Original KB Elevation (ft) 4,834.00		KB - GL / MSL (ftKB) 13.00			Spud Date 8/31/1992		P & A Date		
Comment PERF CIRCULATING HOLES @ 3438'. 8-05-09 HALF OF PACKER STUCK AT 6,680' ABANDON MILLING ATTEMPTS FOR NOW.									
Directions To Well WCR 34 & WCR 53, (# 1993) EAST 1.1 MILE TO FOUR WAY. CONTINUE EAST, NORTH, EAST, AND SOUTH 2.3 MILES TO DOUBLE CATTLE GUARD. SOUTHWEST 0.8, WEST 0.1 INTO									
Surface Location (Congressional)									
Quarter 1	Quarter 2	Quarter 3 NW	Quarter 4 SE	Section 22	Township 3	Twnshp... N	Range 64	Rng E/W... W	
Bottom Hole Location									
North-South Distance (ft)			From N or S Line		East-West Distance (ft)			From E or W Line	
Plug Back Total Depths									
Date		Depth (ftKB)		Method		Com			
9/4/1992		7,147.0		CASING TALLY		PUSH PACKER TO THIS POINT. NEED TO BURN... PACKER STUCK IN HOLE. ABANDON MILLING AT...			
4/24/2009		6,977.0		TUBING TALLY					
7/16/2009		6,298.0		TUBING TALLY					
8/5/2009		6,680.0		TUBING TALLY					
Wellbore Sections									
Section Des				Size (in)		Act Top (ftKB)		Act Btm (ftKB)	
SURFACE				12 1/4		13.0		563.0	
PRODUCTION				7 7/8		563.0		7,154.0	
Zone Statuses									
Zone Name		Status Date		Status		Job			
SUSSEX		10/20/1992		PR		DRILLING/COMPLETION - ORIGINAL, 8/31/1992 00:00			
SUSSEX		2/1/1993		PR		DRILLING/COMPLETION - ORIGINAL, 8/31/1992 00:00			
SUSSEX		4/28/2009		AB		RECOMPLETION, 4/24/2009 06:00			
NIOBRARA		5/30/2009		PR		RECOMPLETION, 4/24/2009 06:00			
NIOBRARA		6/26/2009		SI		RECOMPLETION, 4/24/2009 06:00			
CODELL		10/7/1992		SI		DRILLING/COMPLETION - ORIGINAL, 8/31/1992 00:00			
CODELL		2/1/1993		PR		DRILLING/COMPLETION - ORIGINAL, 8/31/1992 00:00			
CODELL		4/27/2009		SI		RECOMPLETION, 4/24/2009 06:00			
Casing Strings									
Surface Casing, 563.0ftKB									
Casing Description Surface Casing		Run Date 8/31/1992		OD (in) 8 5/8	Wt/Len (l... 24.00	Grade	Top (ftKB) 13.0	Set Depth... 563.0	
Production, 7,151.0ftKB									
Casing Description Production		Run Date 9/4/1992		OD (in) 3 1/2	Wt/Len (l... 9.20	Grade J-55	Top (ftKB) 13.0	Set Depth... 7,151.0	
Cement									
Description SURFACE CASING CEMENT						Top Depth (ftKB) 13.0		Bottom Depth (ftKB) 563.0	
Description PRODUCTION CASING CEMENT						Top Depth (ftKB) 3,470.0		Bottom Depth (ftKB) 4,987.0	
Description PRODUCTION CASING CEMENT						Top Depth (ftKB) 6,194.0		Bottom Depth (ftKB) 7,151.0	
Description CEMENT SQUEEZE						Top Depth (ftKB) 3,450.0		Bottom Depth (ftKB) 4,434.0	
Tubing Components									
Item Des		OD (in)	Wt (lb/ft)	Grade	Jts	Len (ft)		Btm (ftKB)	Btm (TVD) (ftKB)
Perforation Data									
Zone		Bnch/St g	Entered Shot Total	Top (ftKB)		Btm (ftKB)		Date	
SUSSEX, ORIGINAL HOLE			2	3,438.0		3,438.0		5/5/2009	
SUSSEX, ORIGINAL HOLE			15	4,382.0		4,434.0		10/6/1992	
NIOBRARA, ORIGINAL HOLE			64	6,746.0		6,762.0		5/12/2009	
CODELL, ORIGINAL HOLE			40	6,976.0		6,986.0		9/11/1992	

Well Name: SPIKE STATE D22-10

VERTICAL - ORIGINAL HOLE, 6/21/2012 1:56:01 PM



Stimulations & Treatments

Date	Zone	Primary Job Type
9/14/1992	CODELL, ORIGINAL HOLE	DRILLING/COMPLETION - ORIGINAL
Technical Result	Tech Result Details	Tech Result Note
Comment		
Date	Zone	Primary Job Type
10/8/1992	SUSSEX, ORIGINAL HOLE	DRILLING/COMPLETION - ORIGINAL
Technical Result	Tech Result Details	Tech Result Note
Comment		
Date	Zone	Primary Job Type
5/29/2009	NIOBRARA, ORIGINAL HOLE	RECOMPLETION
Technical Result	Tech Result Details	Tech Result Note
Success	According to Plan	
Comment		
(NIOBRARA RECOMPLETE): ISIP - 3354 PSI. CUT 100 BBLS OFF FR PAD DUE TO WATER SHORTAGE. INC FR LOADING T/ 3 GPT DUE TO HIGH TREATING PRESSURE. TREATMENT WENT WELL. NOLTE FLAT. POST ISIP - 3464 PSI. AVG VISC - 17.59 CP. AVG TEMP - 72.18F. AVG PH - 10.49.		

Other In Hole

Run Date	Des	OD (in)	Top (ftKB)	Btm (ftKB)
5/11/2009	Sand plug	3 1/2	6,825.0	6,977.0
7/21/2009	Packer	3 1/2	6,670.0	6,673.0

Logs

Date	Type	Top (ftKB)	Btm (ftKB)
9/4/1992	Compensated Density	3,800.0	7,123.0
9/4/1992	Induction	3,800.0	7,123.0
9/11/1992	Sonic	3,390.0	7,028.0
5/5/2009	CEMENT BOND	2,930.0	3,615.0