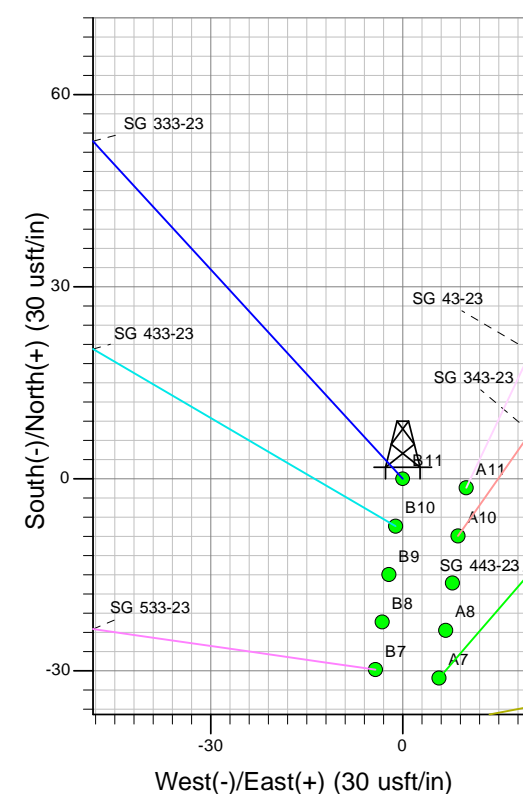
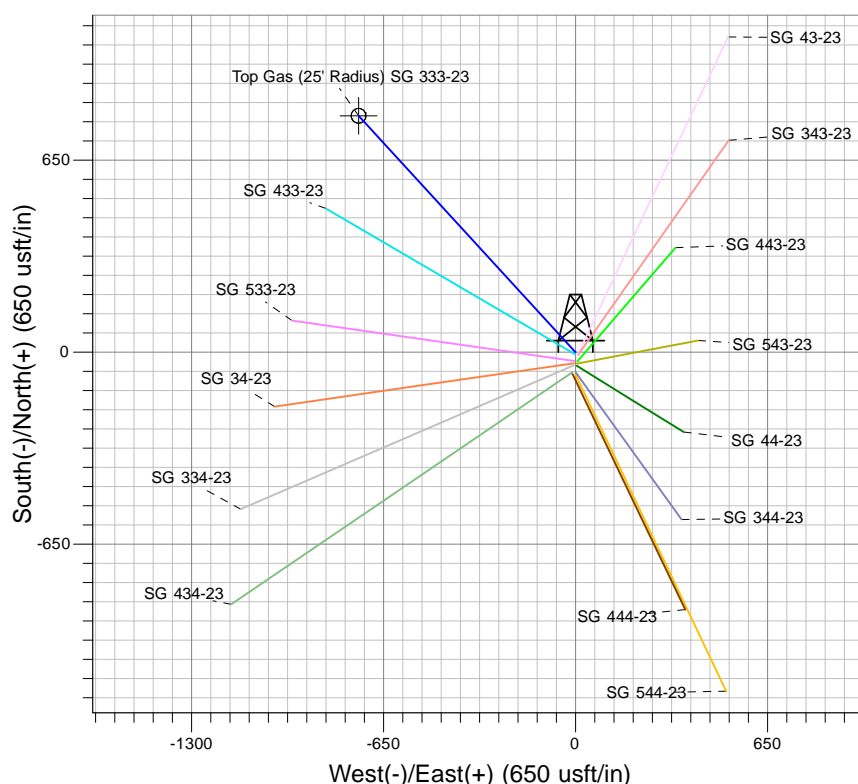
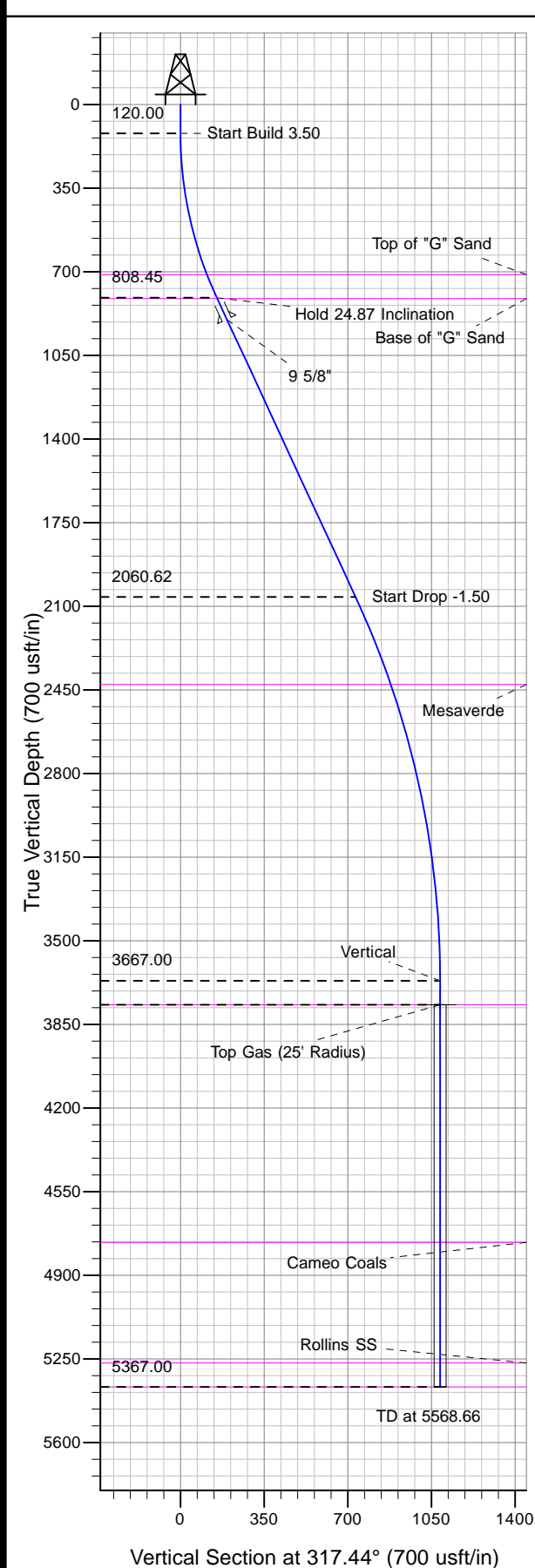




Well Name: SG 333-23  
 Surface Location: SG 44-23 Pad  
 North American Datum 1983 , US State Plane 1983 , Colorado Central Zone  
 Ground Elevation: 5030.00

+N/-S	+E/-W	Northing	Easting	Latitude	Longitude	Slot
0.00	0.00	1587825.90	2273918.60	39.41914	-108.07046	B11

KELLY BUSHING @ 5052.00usft (Cyclone 17)



Project: SG 23-07S-096W  
 Site: SG 44-23 Pad  
 Well: SG 333-23  
 Design #2 14Jun12 kjs

Azimuths to True North  
 Magnetic North: 10.30°  
 Magnetic Field  
 Strength: 52205.6snT  
 Dip Angle: 65.67°  
 Date: 10/20/2011  
 Model: IGRF2005-10

#### ANNOTATIONS

MD	Inc	Azi	TVD	+N/-S	+E/-W	Vsect	Departure	Annotation
120.00	0.00	0.0000	120.00	0.00	0.00	0.00	0.00	Start Build 3.50
830.55	24.8692	317.44	808.45	111.82	-102.67	151.80	151.80	Hold 24.87 Inclination
2210.71	24.8692	317.44	2060.62	539.36	-495.22	732.22	732.22	Start Drop -1.50
3868.66	0.0000	0.00	3667.00	800.27	-734.77	1086.43	1086.43	Vertical
3968.66	0.0000	0.00	3767.00	800.27	-734.77	1086.43	1086.43	Top Gas
5568.66	0.0000	0.00	5367.00	800.27	-734.77	1086.43	1086.43	TD at 5568.66