

T7S, R96W, 6th P.M.

WPX Energy Rocky Mountain, LLC

Well location, LANTZ SG 343-23, located as shown in the SE 1/4 SE 1/4 of Section 23, T7S, R96W, 6th P.M., Garfield County, Colorado.

BASIS OF ELEVATION

SPOT ELEVATION AT THE NORTHWEST CORNER OF SECTION 30, T5S, R95W, 6th P.M. TAKEN FROM THE FORKED GULCH QUADRANGLE, COLORADO, GARFIELD COUNTY, 7.5 MINUTE SERIES (TOPOGRAPHICAL MAP) PUBLISHED BY THE UNITED STATES DEPARTMENT OF THE INTERIOR, GEOLOGICAL SURVEY. SAID ELEVATION IS MARKED AS BEING 5966 FEET.

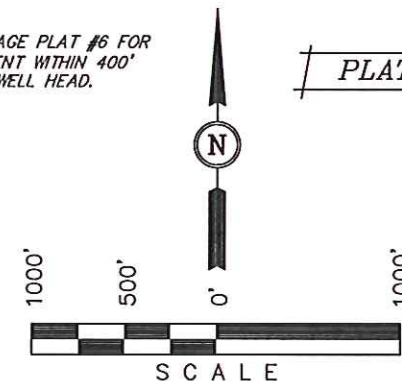
BASIS OF BEARINGS

BASIS OF BEARINGS IS A G.P.S. OBSERVATION.

NOTE:
SEE CURRENT FOOTAGE PLAT #6 FOR
EXISTING IMPROVEMENT WITHIN 400'
OF THE PROPOSED WELL HEAD.

PLAT #1

Position Re-Established
Mathematically Grant
Boundary Method (Not Set)



CERTIFICATE

THIS IS TO CERTIFY THAT THE ABOVE PLAT WAS PREPARED AND LOCATION AS SHOWN WAS STAKED ON THE GROUND FROM FIELD NOTES OF ACTUAL SURVEYS MADE BY ME OR UNDER MY SUPERVISION AND THAT THE SAME ARE TRUE AND CORRECT TO THE BEST OF MY KNOWLEDGE AND BELIEF.

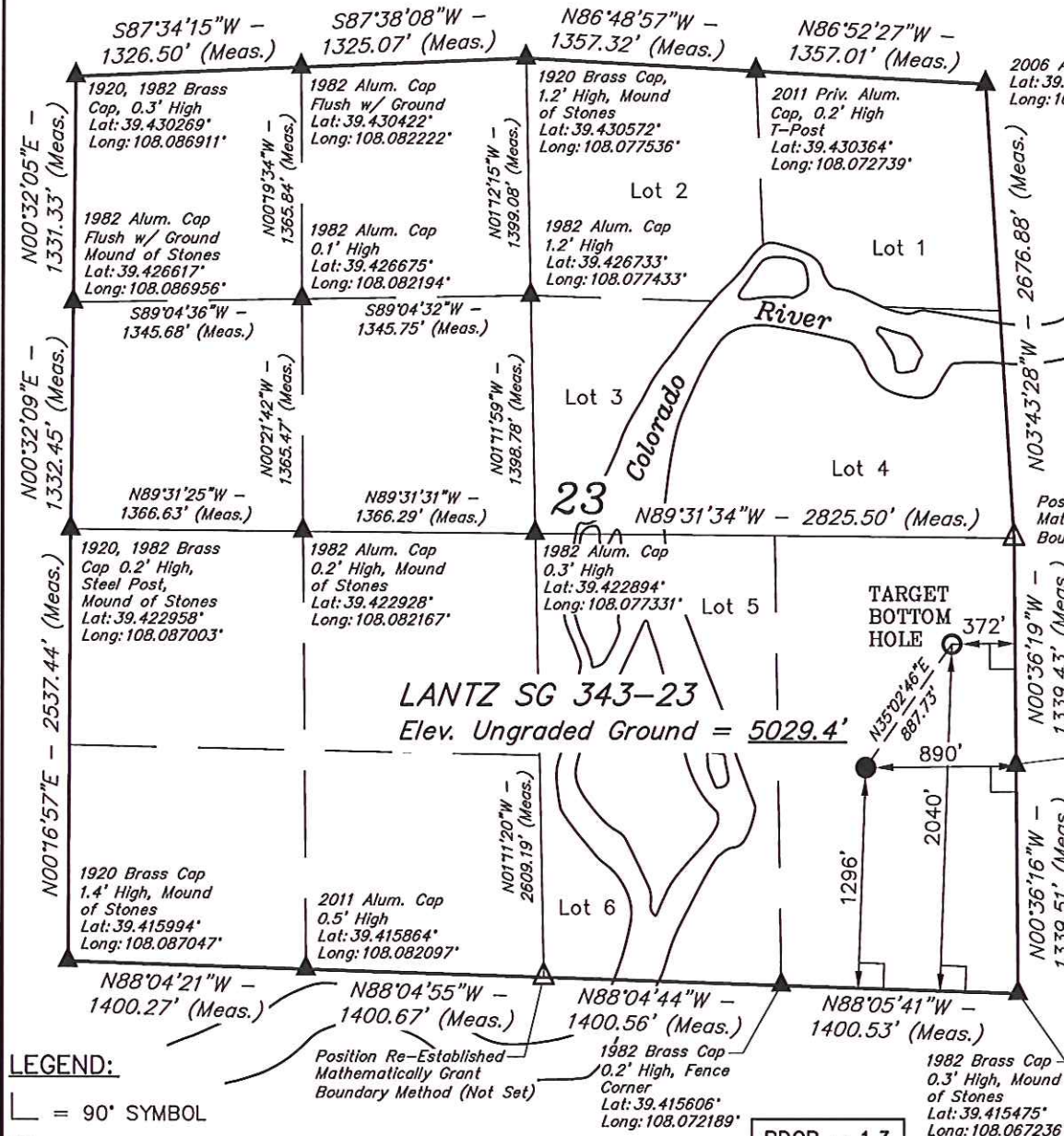
REGISTERED LAND SURVEYOR
REGISTRATION NO. 17492
STATE OF COLORADO
04-04-2012

UINTAH ENGINEERING & LAND SURVEYING

85 SOUTH 200 EAST - VERNAL, UTAH 84078

(435) 789-1017

SCALE 1" = 1000'	DATE SURVEYED: 03-02-12	DATE DRAWN: 04-02-12
PARTY B.J. B.B. D.R.B.	REFERENCES G.L.O. PLAT	
WEATHER WARM	FILE WPX Energy Rocky Mountain, LLC	



LEGEND:

- └─┘ = 90° SYMBOL
- = PROPOSED WELL HEAD.
- ▲ = SECTION CORNERS LOCATED.
- △ = SECTION CORNERS RE-ESTAB.
(NOT SET ON GROUND)

Position Re-Established
Mathematically Grant
Boundary Method (Not Set)

1982 Brass Cap
0.2' High, Fence
Corner
Lat: 39.415606°
Long: 108.072189°

1982 Brass Cap
0.3' High, Mound
of Stones
Lat: 39.415475°
Long: 108.067236°

PDOP = 1.3

NAD 83 (TARGET BOTTOM HOLE)

LATITUDE = 39°25'16.01" (39.421114)
LONGITUDE = 108°04'07.06" (108.068628)
STATE PLANE-(COLO. CENTRAL-NAD 83)
N = 1588528.300
E = 2274457.300

NAD 83 (SURFACE LOCATION)

LATITUDE = 39°25'08.83" (39.419119)
LONGITUDE = 108°04'13.56" (108.070433)
STATE PLANE-(COLO. CENTRAL-NAD 83)
N = 1587816.692
E = 2273927.045