

T7S, R96W, 6th P.M.

WPX Energy Rocky Mountain, LLC

Well location, LANTZ SG 544-23, located as shown in the SE 1/4 SE 1/4 of Section 23, T7S, R96W, 6th P.M., Garfield County, Colorado.

BASIS OF ELEVATION

SPOT ELEVATION AT THE NORTHWEST CORNER OF SECTION 30, T5S, R95W, 6th P.M. TAKEN FROM THE FORKED GULCH QUADRANGLE, COLORADO, GARFIELD COUNTY, 7.5 MINUTE SERIES (TOPOGRAPHICAL MAP) PUBLISHED BY THE UNITED STATES DEPARTMENT OF THE INTERIOR, GEOLOGICAL SURVEY. SAID ELEVATION IS MARKED AS BEING 5966 FEET.

BASIS OF BEARINGS

BASIS OF BEARINGS IS A G.P.S. OBSERVATION.

NOTE:  
SEE CURRENT FOOTAGE PLAT #6 FOR  
EXISTING IMPROVEMENT WITHIN 400'  
OF THE PROPOSED WELL HEAD.



PLAT #1



SCALE

CERTIFICATE

THIS IS TO CERTIFY THAT THE ABOVE PLAT WAS PREPARED AND LOCATION AS SHOWN WAS STAKED ON THE GROUND FROM FIELD NOTES OF ACTUAL SURVEYS MADE BY ME OR UNDER MY SUPERVISION AND THAT THE SAME ARE TRUE AND CORRECT TO THE BEST OF MY KNOWLEDGE AND BELIEF.

REGISTERED LAND SURVEYOR  
REGISTRATION NO. 17492  
STATE OF COLORADO

04-04-2012

UINTAH ENGINEERING & LAND SURVEYING

85 SOUTH 200 EAST - VERNAL, UTAH 84078

(435) 789-1017

SCALE  
1" = 1000'

DATE SURVEYED:  
03-02-12

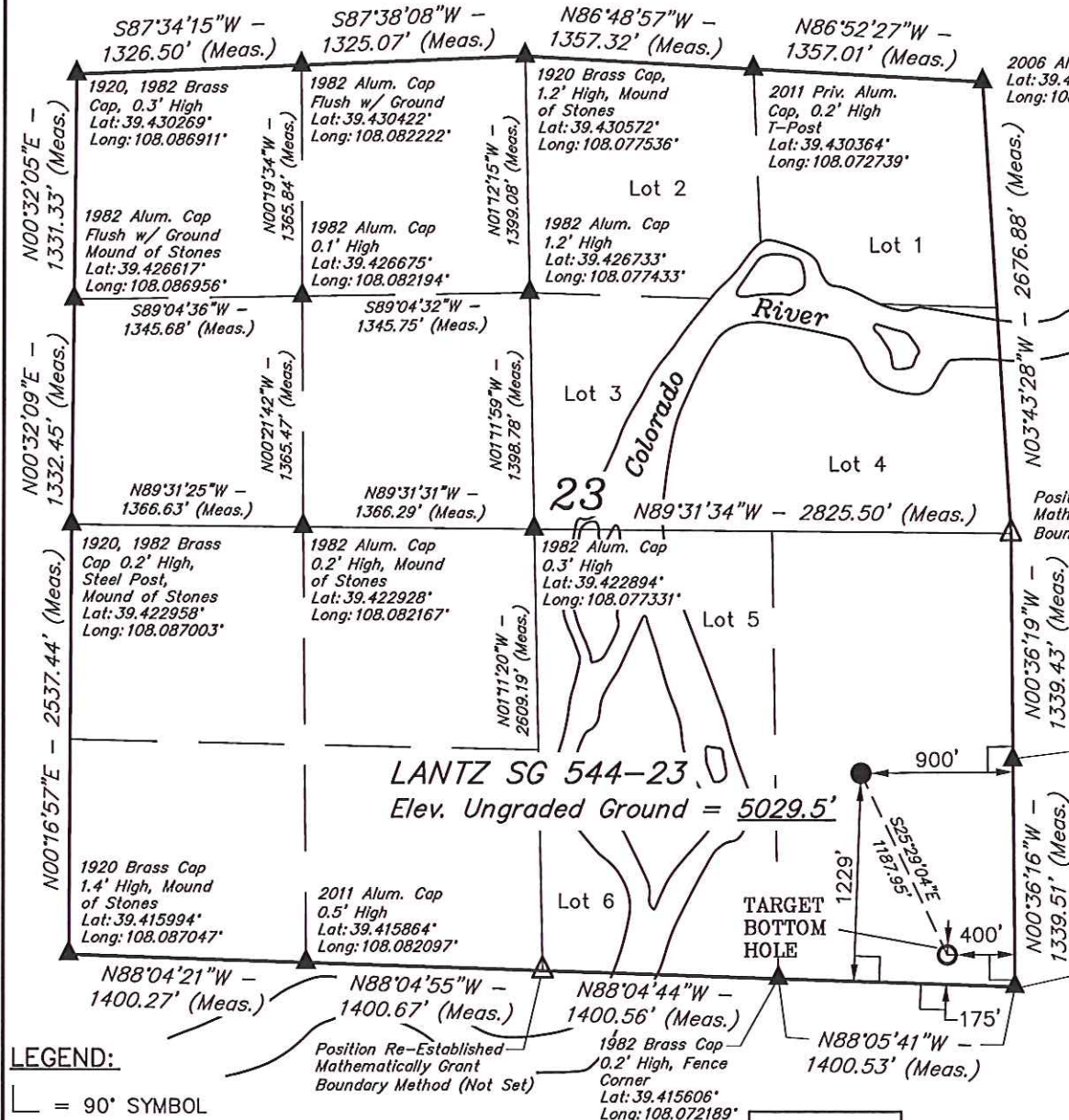
DATE DRAWN:  
04-02-12

PARTY  
B.J. B.B. D.R.B.

REFERENCES  
G.L.O. PLAT

WEATHER  
WARM

FILE  
WPX Energy Rocky Mountain, LLC



LEGEND:

- └─ = 90° SYMBOL
- = PROPOSED WELL HEAD.
- ▲ = SECTION CORNERS LOCATED.
- △ = SECTION CORNERS RE-ESTAB.  
(NOT SET ON GROUND)

Position Re-Established  
Mathematically Grant  
Boundary Method (Not Set)

1982 Brass Cap  
0.2' High, Fence  
Corner  
Lat: 39.415606°  
Long: 108.072189°

PDOP = 1.8

NAD 83 (TARGET BOTTOM HOLE)

LATITUDE = 39°24'57.57" (39.415992)  
LONGITUDE = 108°04'07.17" (108.068658)

STATE PLANE-(COLO. CENTRAL-NAD 83)

N = 1586664.000  
E = 2274396.000

NAD 83 (SURFACE LOCATION)

LATITUDE = 39°25'08.17" (39.418936)  
LONGITUDE = 108°04'13.68" (108.070467)

STATE PLANE-(COLO. CENTRAL-NAD 83)

N = 1587750.241  
E = 2273916.024