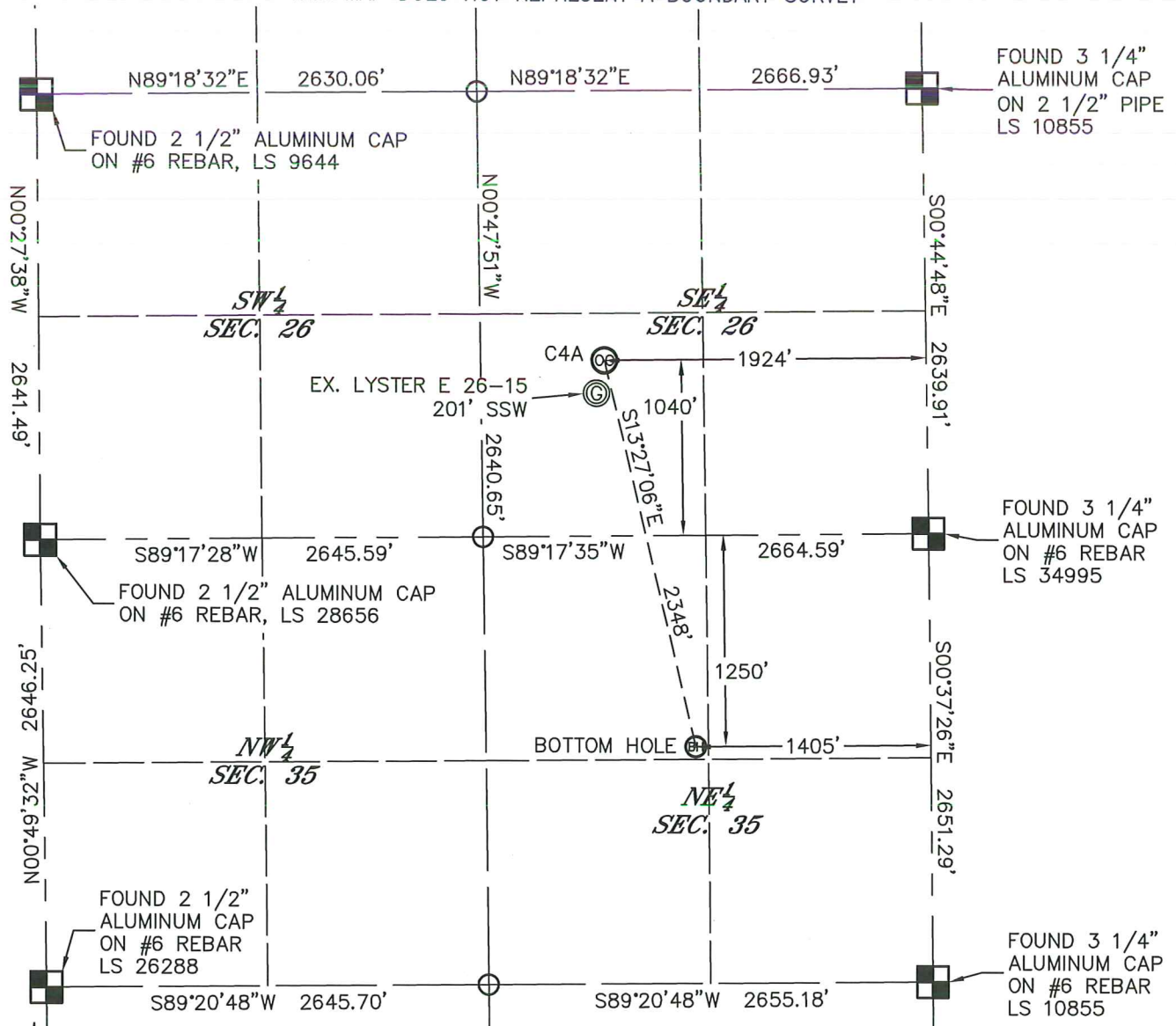


WELL LOCATION CERTIFICATE

C4A

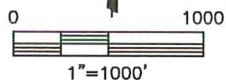
SECTION: 26
TOWNSHIP: 6N
RANGE: 65W

THIS MAP DOES NOT REPRESENT A BOUNDARY SURVEY



In accordance with a request from JIM GODDARD with HIGH SIERRA WATER SERVICES, LLC King Surveyors Inc. has determined the surface location of the C4A to be 1040' from the SOUTH line and 1924' from the EAST line, as measured at right angles, from the section lines of Section 26, Township 6 North, Range 65 West of the Sixth Principal Meridian and the bottom hole to be 1250' from the NORTH line and 1405' from the EAST line, as measured at right angles, from the section lines of Section 35, Township 6 North, Range 65 West of the Sixth Principal Meridian, County of Weld, State of Colorado.

I hereby state that this Well Location Certificate was prepared by me, or under my direct supervision, that the fieldwork was completed on 12-13-2011, for and on behalf of HIGH SIERRA WATER SERVICES, LLC. That this is not a Land Survey Plat or an Improvement Survey Plat, and that it is not to be relied upon for establishment of fence, building, or other future improvement lines.



NOTE:

- 1) Bearings shown are Grid Bearings of the Colorado State Plane Coordinate System, North Zone, North American Datum 1983/2007. The lineal dimensions as contained herein are based upon the "U.S. Survey Foot."
- 2) Ground elevations are based on an observed GPS elevation (NAVD 1988 DATUM).
- 3) NEAREST EXISTING WELL: LYSTER E 26-15 201' SSW
- 4) IMPROVEMENTS: See LOCATION DRAWING exhibit for all visible improvements within 400' of disturbed area.
- 5) SURFACE USE: CROP FIELD
- 6) FIELD OPERATOR: RON EDWARDS

LEGEND

- = FOUND ALIQUOT MONUMENT AS DESCRIBED
- = CALCULATED POSITION
- = SET ALIQUOT MONUMENT AS DESCRIBED

NOTE

According to Colorado law, you must commence any legal action based upon any defect in this W.L.C. within three years after you discover such defect. In no event, may any action based upon any defect in this survey be commenced more than ten years after the date of the certificate shown hereon. (13-80-105 C.R.S.)

SURFACE LOCATION
LATITUDE: 40.45253°N
LONGITUDE: 104.62766°W
PDOP: 2.1
ELEV: 4682'
1/4, 1/4: SW1/4SE1/4
NEAREST PROPERTY LINE: 422' SE

BOTTOM HOLE
LATITUDE: 40.44625°N
LONGITUDE: 104.62578°W

Michael Chad Bilka - On Behalf of King Surveyors, Inc.
Colorado Licensed Professional Land Surveyor #38106
6/14/2012
PROJECT#: 2005109