



Enseco Survey Report

27 June, 2012

Wexpro Company

Moffat County, Colorado

Sec 15, T11N, R97W, 6 PM

Powder Wash Government #15

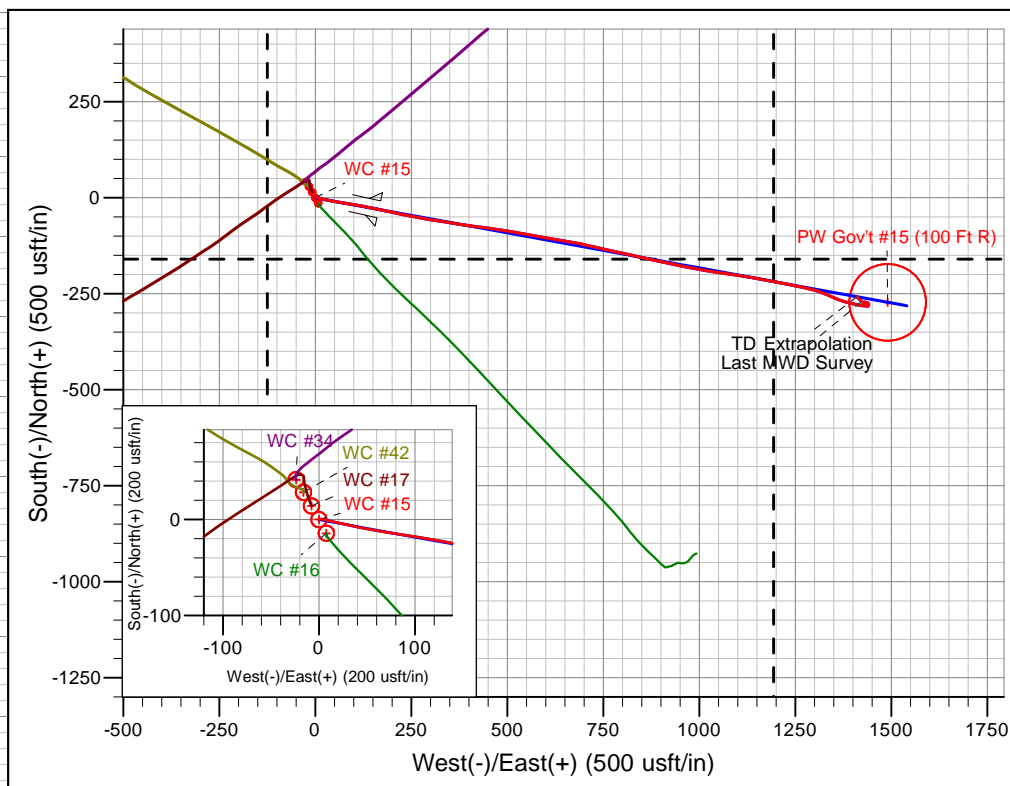
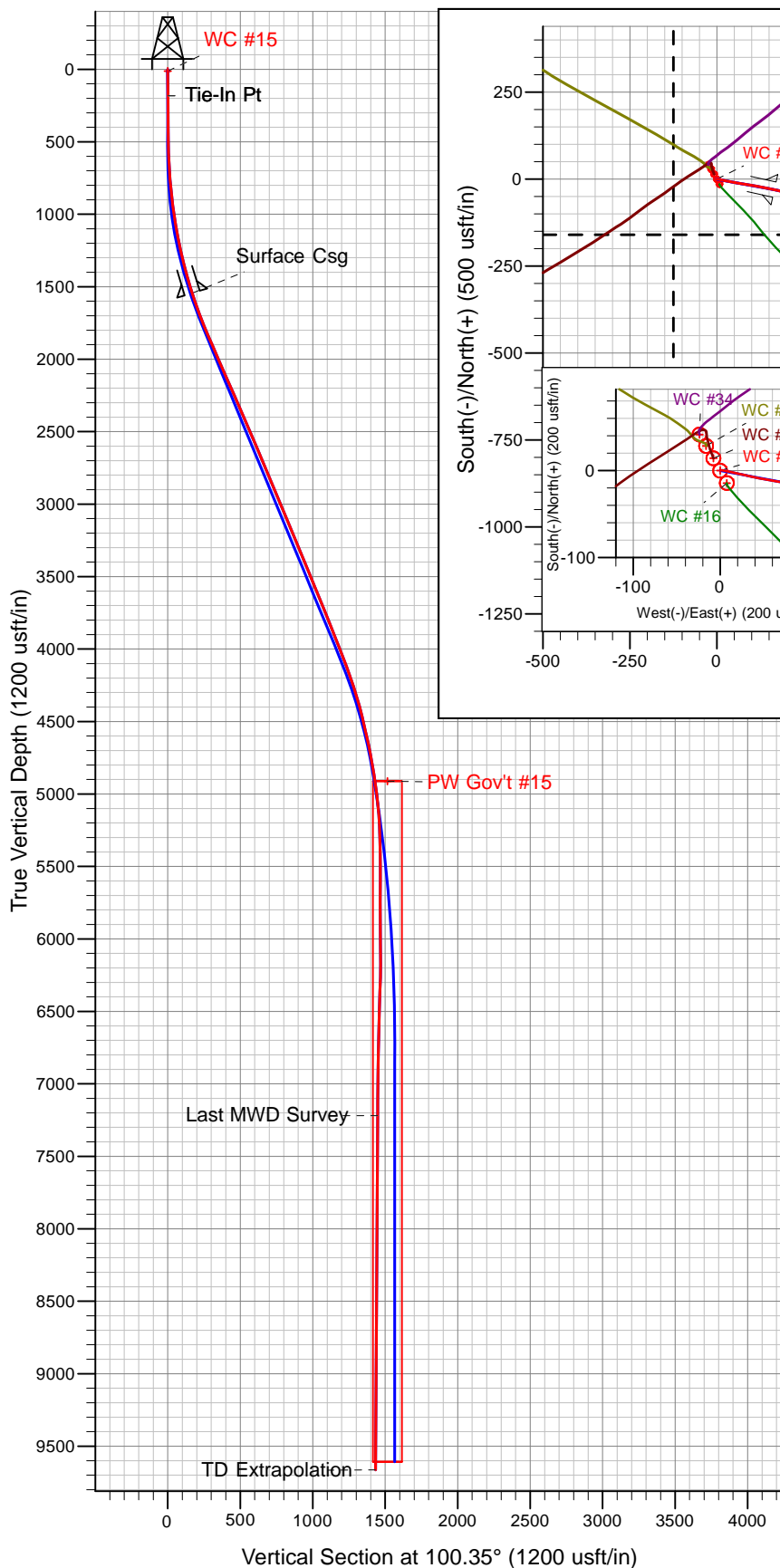
API #: 05-081-07628

Survey: Final Surveys to TD (9,921' MD)



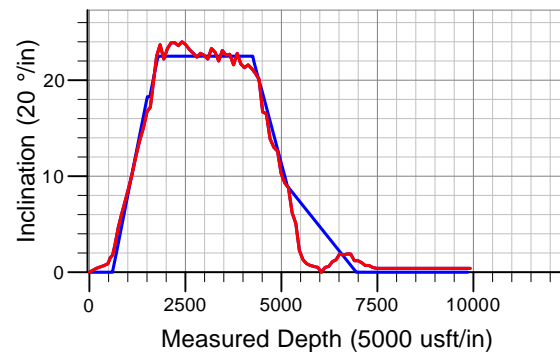


Wexpro Company
Project: Moffat County, Colorado
Site: Sec 15, T11N, R97W, 6 PM
Well: Powder Wash Government #15
Wellbore: API #: 05-081-07628
Design: Final Surveys (10554-159)



Ref Information: Well Center

Geodetic System: US State Plane 1983
 Ellipsoid: GRS 1980
 Zone: Colorado Northern Zone
 Northing: 1596026.55
 Easting: 2220959.67
 Latitude: 40° 56' 7.631 N
 Longitude: 108° 19' 11.690 W
 Ground Elevation: 7037.0
 KB Elevation: Field KB @ 7065.0usft (SST-88)



ANNOTATIONS

TVD	MD	Inc	Azi	Vsect	Annotation
183.0	183.0	0.40	69.10	0.5	Tie-In Pt
1545.1	1562.0	17.03	102.57	168.7	Surface Casing
7219.0	7476.0	0.40	315.70	1448.0	Last MWD Survey
9664.0	9921.0	0.40	315.70	1434.0	TD Extrapolation

Company:	Wexpro Company	Local Co-ordinate Reference:	Well Powder Wash Government #15
Project:	Moffat County, Colorado	Ground Level Elevation:	7,037.00usft
Site:	Sec 15, T11N, R97W, 6 PM	Wellhead Elevation:	Field KB @ 7065.0usft (SST-88)
Well:	Powder Wash Government #15	North Reference:	True
Wellbore:	API #: 05-081-07628	Survey Calculation Method:	Minimum Curvature
Design:	Final Surveys (10554-159)	Database:	EDM 5000.1 Single User Db

Project	Moffat County, Colorado		
Map System:	US State Plane 1983	System Datum:	Mean Sea Level
Geo Datum:	North American Datum 1983		
Map Zone:	Colorado Northern Zone		Using geodetic scale factor

Site	Sec 15, T11N, R97W, 6 PM		
Site Position:		Northing:	1,596,083.30 usft
From:	Map	Easting:	2,220,929.13usft
Position Uncertainty:	0.0usft	Slot Radius:	13-3/16"
		Latitude:	40° 56' 8.182 N
		Longitude:	108° 19' 12.112 W
		Grid Convergence:	-1.82°

Well	Powder Wash Government #15		
Well Position	+N/-S	-55.7 usft	Northing: 1,596,026.55 usft
	+E/-W	32.3 usft	Easting: 2,220,959.67 usft
Position Uncertainty	0.0 usft	Wellhead Elevation:	7,065.0 usft
		Latitude:	40° 56' 7.631 N
		Longitude:	108° 19' 11.690 W
		Ground Level:	7,037.0usft

Wellbore	API #: 05-081-07628				
Magnetics	Model Name	Sample Date	Declination (°)	Dip Angle (°)	Field Strength (nT)
	IGRF2010	28-Oct-2010	10.77	66.87	53,035

Design:	Final Surveys (10554-159)			Survey Error Model:	Standard ISCWSA MWD Tool
Audit Notes:					
Version:	1.0	Phase:	ACTUAL	Tie On Depth:	0.0
Vertical Section:	Depth From (TVD) (usft)	+N/-S (usft)	+E/-W (usft)	Direction (°)	
	0.0	0.0	0.0	100.35	

Company:	Wexpro Company	Local Co-ordinate Reference:	Well Powder Wash Government #15
Project:	Moffat County, Colorado	Ground Level Elevation:	7,037.00usft
Site:	Sec 15, T11N, R97W, 6 PM	Wellhead Elevation:	Field KB @ 7065.0usft (SST-88)
Well:	Powder Wash Government #15	North Reference:	True
Wellbore:	API #: 05-081-07628	Survey Calculation Method:	Minimum Curvature
Design:	Final Surveys (10554-159)	Database:	EDM 5000.1 Single User Db

Survey										
MD (usft)	Inc (°)	Azi (°)	TVD (usft)	SS (usft)	+N/-S (usft)	+E/-W (usft)	Vertical Section (usft)	Dogleg Rate (°/100usft)	Build Rate (°/100usft)	Turn Rate (°/100usft)
0.0	0.00	0.00	0.0	7,065.00	0.0	0.0	0.0	0.00	0.00	0.00
Tie-In Pt										
183.0	0.40	69.10	183.0	6,882.00	0.2	0.6	0.5	0.22	0.22	0.00
395.0	0.70	93.90	395.0	6,670.01	0.4	2.6	2.5	0.18	0.14	11.70
486.0	0.90	98.50	486.0	6,579.02	0.3	3.8	3.7	0.23	0.22	5.05
547.0	1.50	104.00	547.0	6,518.04	0.0	5.1	5.0	1.00	0.98	9.02
608.0	1.80	104.50	607.9	6,457.06	-0.4	6.8	6.8	0.49	0.49	0.82
669.0	2.80	101.20	668.9	6,396.11	-1.0	9.2	9.2	1.65	1.64	-5.41
759.0	4.70	102.10	758.7	6,306.31	-2.2	14.9	15.1	2.11	2.11	1.00
850.0	6.10	103.40	849.3	6,215.72	-4.1	23.3	23.6	1.54	1.54	1.43
941.0	7.50	100.20	939.6	6,125.36	-6.2	33.8	34.4	1.59	1.54	-3.52
1,032.0	8.90	102.40	1,029.7	6,035.29	-8.8	46.6	47.4	1.58	1.54	2.42
1,124.0	10.30	100.20	1,120.4	5,944.58	-11.8	61.6	62.7	1.57	1.52	-2.39
1,219.0	12.10	98.40	1,213.6	5,851.39	-14.7	79.8	81.2	1.93	1.89	-1.89
1,314.0	13.70	98.90	1,306.2	5,758.80	-17.9	100.8	102.4	1.69	1.68	0.53
1,410.0	15.00	99.90	1,399.2	5,665.79	-21.8	124.3	126.2	1.38	1.35	1.04
1,502.0	16.70	101.90	1,487.7	5,577.29	-26.6	148.9	151.3	1.94	1.85	2.17
Surface Casing										
1,562.0	17.03	102.57	1,545.1	5,519.87	-30.3	165.9	168.7	0.64	0.55	1.11
1,593.0	17.20	102.90	1,574.8	5,490.25	-32.3	174.8	177.8	0.64	0.55	1.08
1,751.0	22.50	101.30	1,723.3	5,341.69	-43.5	227.3	231.4	3.37	3.35	-1.01
1,847.0	23.70	100.60	1,811.6	5,253.39	-50.6	264.3	269.1	1.28	1.25	-0.73
1,942.0	22.20	99.80	1,899.1	5,165.91	-57.2	300.7	306.1	1.61	-1.58	-0.84
2,038.0	23.30	98.20	1,987.6	5,077.38	-63.0	337.4	343.2	1.31	1.15	-1.67
2,133.0	23.90	99.10	2,074.7	4,990.32	-68.7	375.0	381.2	0.74	0.63	0.95
2,228.0	23.90	97.40	2,161.5	4,903.47	-74.2	413.1	419.7	0.72	0.00	-1.79
2,324.0	23.60	96.80	2,249.4	4,815.60	-79.0	451.4	458.3	0.40	-0.31	-0.63
2,420.0	24.00	99.80	2,337.2	4,727.76	-84.6	489.8	497.0	1.33	0.42	3.13
2,515.0	23.70	100.00	2,424.1	4,640.87	-91.2	527.6	535.4	0.33	-0.32	0.21
2,610.0	23.20	100.40	2,511.3	4,553.72	-97.9	564.8	573.2	0.55	-0.53	0.42
2,706.0	22.80	99.50	2,599.6	4,465.35	-104.4	601.7	610.7	0.55	-0.42	-0.94
2,801.0	22.40	100.00	2,687.4	4,377.65	-110.6	637.7	647.2	0.47	-0.42	0.53
2,897.0	22.80	99.80	2,776.0	4,289.02	-116.9	674.1	684.1	0.42	0.42	-0.21
2,992.0	22.60	103.60	2,863.6	4,201.37	-124.3	710.0	720.7	1.56	-0.21	4.00
3,088.0	22.20	101.80	2,952.4	4,112.62	-132.4	745.6	757.3	0.83	-0.42	-1.88
3,183.0	23.30	102.90	3,040.0	4,025.01	-140.2	781.5	794.0	1.24	1.16	1.16
3,278.0	22.90	102.70	3,127.4	3,937.63	-148.5	817.9	831.2	0.43	-0.42	-0.21
3,374.0	22.00	101.60	3,216.1	3,848.90	-156.2	853.7	867.9	1.03	-0.94	-1.15
3,469.0	23.10	102.20	3,303.8	3,761.17	-163.7	889.3	904.3	1.18	1.16	0.63
3,565.0	22.60	102.70	3,392.3	3,672.70	-171.8	925.7	941.5	0.56	-0.52	0.52
3,660.0	22.70	101.20	3,480.0	3,585.03	-179.3	961.5	978.1	0.62	0.11	-1.58
3,756.0	21.60	100.00	3,568.9	3,496.11	-186.0	997.1	1,014.3	1.24	-1.15	-1.25
3,851.0	22.80	99.10	3,656.8	3,408.16	-192.0	1,032.5	1,050.2	1.31	1.26	-0.95
3,946.0	21.70	98.00	3,744.8	3,320.23	-197.3	1,068.1	1,086.1	1.24	-1.16	-1.16
4,042.0	21.30	97.60	3,834.1	3,230.91	-202.1	1,102.9	1,121.3	0.44	-0.42	-0.42
4,137.0	21.60	101.40	3,922.5	3,142.49	-207.8	1,137.2	1,156.0	1.50	0.32	4.00
4,233.0	21.20	100.30	4,011.9	3,053.11	-214.4	1,171.6	1,191.0	0.59	-0.42	-1.15
4,328.0	20.70	100.30	4,100.6	2,964.39	-220.5	1,205.0	1,225.0	0.53	-0.53	0.00
4,424.0	20.10	100.70	4,190.6	2,874.41	-226.6	1,237.9	1,258.5	0.64	-0.63	0.42
4,520.0	16.70	102.70	4,281.7	2,783.33	-232.7	1,267.6	1,288.8	3.60	-3.54	2.08
4,615.0	16.50	104.20	4,372.7	2,692.29	-239.0	1,294.0	1,315.9	0.50	-0.21	1.58
4,710.0	13.90	110.60	4,464.4	2,600.62	-246.3	1,317.7	1,340.5	3.25	-2.74	6.74

Company:	Wexpro Company	Local Co-ordinate Reference:	Well Powder Wash Government #15
Project:	Moffat County, Colorado	Ground Level Elevation:	7,037.00usft
Site:	Sec 15, T11N, R97W, 6 PM	Wellhead Elevation:	Field KB @ 7065.0usft (SST-88)
Well:	Powder Wash Government #15	North Reference:	True
Wellbore:	API #: 05-081-07628	Survey Calculation Method:	Minimum Curvature
Design:	Final Surveys (10554-159)	Database:	EDM 5000.1 Single User Db

Survey										
MD (usft)	Inc (°)	Azi (°)	TVD (usft)	SS (usft)	+N/-S (usft)	+E/-W (usft)	Vertical Section (usft)	Dogleg Rate (°/100usft)	Build Rate (°/100usft)	Turn Rate (°/100usft)
4,806.0	13.00	114.10	4,557.8	2,507.25	-254.8	1,338.4	1,362.4	1.26	-0.94	3.65
4,901.0	12.60	113.30	4,650.4	2,414.61	-263.3	1,357.7	1,382.9	0.46	-0.42	-0.84
4,997.0	10.30	106.20	4,744.5	2,320.52	-269.8	1,375.5	1,401.6	2.81	-2.40	-7.40
5,092.0	9.30	102.00	4,838.1	2,226.91	-273.8	1,391.2	1,417.7	1.29	-1.05	-4.42
5,188.0	8.80	103.00	4,932.9	2,132.10	-277.0	1,405.9	1,432.8	0.55	-0.52	1.04
5,283.0	6.20	104.50	5,027.1	2,037.93	-279.9	1,418.0	1,445.2	2.74	-2.74	1.58
5,378.0	5.10	88.50	5,121.6	1,943.38	-281.1	1,427.2	1,454.4	2.01	-1.16	-16.84
5,474.0	2.30	100.60	5,217.4	1,847.59	-281.4	1,433.3	1,460.6	3.01	-2.92	12.60
5,569.0	1.30	115.30	5,312.4	1,752.64	-282.2	1,436.2	1,463.5	1.15	-1.05	15.47
5,664.0	0.90	107.80	5,407.3	1,657.66	-282.9	1,437.9	1,465.3	0.45	-0.42	-7.89
5,760.0	0.70	43.10	5,503.3	1,561.67	-282.7	1,439.0	1,466.3	0.91	-0.21	-67.40
5,855.0	0.60	313.60	5,598.3	1,466.67	-281.9	1,439.0	1,466.2	0.97	-0.11	-94.21
5,951.0	0.50	337.80	5,694.3	1,370.68	-281.2	1,438.5	1,465.6	0.26	-0.10	25.21
6,046.0	0.00	221.90	5,789.3	1,275.68	-280.8	1,438.3	1,465.4	0.53	-0.53	0.00
6,142.0	0.50	62.30	5,885.3	1,179.68	-280.6	1,438.7	1,465.7	0.52	0.52	0.00
6,237.0	0.60	66.40	5,980.3	1,084.68	-280.2	1,439.5	1,466.4	0.11	0.11	4.32
6,332.0	1.10	61.10	6,075.3	989.69	-279.5	1,440.8	1,467.6	0.53	0.53	-5.58
6,428.0	1.30	5.90	6,171.3	893.71	-278.0	1,441.7	1,468.2	1.17	0.21	-57.50
6,523.0	1.90	323.70	6,266.3	798.75	-275.7	1,440.9	1,467.0	1.35	0.63	-44.42
6,619.0	1.80	286.80	6,362.2	702.79	-274.0	1,438.5	1,464.3	1.22	-0.10	-38.44
6,714.0	1.90	294.20	6,457.2	607.84	-272.9	1,435.6	1,461.3	0.27	0.11	7.79
6,809.0	1.90	282.40	6,552.1	512.90	-271.9	1,432.7	1,458.2	0.41	0.00	-12.42
6,905.0	1.20	252.50	6,648.1	416.93	-271.9	1,430.1	1,455.7	1.09	-0.73	-31.15
7,000.0	1.20	272.40	6,743.0	321.95	-272.1	1,428.2	1,453.8	0.44	0.00	20.95
7,094.0	1.00	278.00	6,837.0	227.97	-272.0	1,426.4	1,452.1	0.24	-0.21	5.96
7,190.0	0.70	285.00	6,933.0	131.98	-271.7	1,425.0	1,450.6	0.33	-0.31	7.29
7,285.0	0.70	303.20	7,028.0	36.99	-271.2	1,424.0	1,449.5	0.23	0.00	19.16
7,380.0	0.50	306.50	7,123.0	-58.01	-270.7	1,423.1	1,448.6	0.21	-0.21	3.47
Last MWD Survey										
7,476.0	0.40	315.70	7,219.0	-154.03	-270.2	1,422.6	1,448.0	0.13	-0.10	9.58
TD Extrapolation										
9,921.0	0.40	315.70	9,664.0	-2,598.97	-258.0	1,410.6	1,434.0	0.00	0.00	0.00

Casing Points					
MD (usft)	TVD (usft)	Name	Casing Diameter (")	Hole Diameter (")	
1,562.0	1,545.1	Surface Csg	0	0	

Survey Annotations				
MD (usft)	TVD (usft)	Local Coordinates		Comment
		+N/-S (usft)	+E/-W (usft)	
183.0	183.0	0.2	0.6	Tie-In Pt
1,562.0	1,545.1	-30.3	165.9	Surface Casing
7,476.0	7,219.0	-270.2	1,422.6	Last MWD Survey
9,921.0	9,664.0	-258.0	1,410.6	TD Extrapolation



Enseco Closure Report

27 June, 2012

Wexpro Company

Moffat County, Colorado

Sec 15, T11N, R97W, 6 PM

Powder Wash Government #15

API #: 05-081-07628

Survey: Final Surveys to TD (9,921' MD)



Company:	Wexpro Company	Local Co-ordinate Ref:	Well: Powder Wash Government #15
Project:	Moffat County, Colorado	Ground Level:	7,037.0 usft
Site:	Sec 15, T11N, R97W, 6 PM	Wellhead Elevation:	Field KB @ 7065.0usft (SST-88)
Well:	Powder Wash Government #15	North Reference:	True
Wellbore:	API #: 05-081-07628	Survey Calculation Method:	Minimum Curvature
Design:	Final Surveys (10554-159)	Database:	EDM 5000.1 Single User Db

Project	Moffat County, Colorado		
Map System:	US State Plane 1983	System Datum:	Mean Sea Level
Geo Datum:	North American Datum 1983		
Map Zone:	Colorado Northern Zone		Using geodetic scale factor

Site	Sec 15, T11N, R97W, 6 PM		
Site Position:		Northing:	1,596,083.30 usft
From:	Map	Easting:	2,220,929.13usft
Position Uncertainty:	0.0 usft	Slot Radius:	13-3/16"
		Latitude:	40° 56' 8.182 N
		Longitude:	108° 19' 12.112 W
		Grid Convergence:	-1.82°

Well	Powder Wash Government #15		
Well Position	+N/-S	-55.7 usft	Northing: 1,596,026.55 usft
	+E/-W	32.3 usft	Easting: 2,220,959.67 usft
Position Uncertainty	0.0 usft	Wellhead Elevation:	7,065.0 usft
		Latitude:	40° 56' 7.631 N
		Longitude:	108° 19' 11.690 W
		Ground Level:	7,037.0 usft

Wellbore	API #: 05-081-07628				
Magnetics	Model Name	Sample Date	Declination (°)	Dip Angle (°)	Field Strength (nT)
	IGRF2010	28-Oct-2010	10.77	66.87	53,035

Design	Final Surveys (10554-159)			Survey Error Model:	Standard ISCWSA MWD Tool
Audit Notes:					
Version:	1.0	Phase:	ACTUAL	Tie On Depth:	0.0
Vertical Section:	Depth From (TVD) (usft)	+N/-S (usft)	+E/-W (usft)	Direction (°)	
	0.0	0.0	0.0	100.35	

Company:	Wexpro Company	Local Co-ordinate Ref:	Well: Powder Wash Government #15
Project:	Moffat County, Colorado	Ground Level:	7,037.0 usft
Site:	Sec 15, T11N, R97W, 6 PM	Wellhead Elevation:	Field KB @ 7065.0usft (SST-88)
Well:	Powder Wash Government #15	North Reference:	True
Wellbore:	API #: 05-081-07628	Survey Calculation Method:	Minimum Curvature
Design:	Final Surveys (10554-159)	Database:	EDM 5000.1 Single User Db

Survey										
MD (usft)	Inc (°)	Azi (°)	TVD (usft)	SS (usft)	+N/-S (usft)	+E/-W (usft)	Dogleg Rate (°/100usft)	Vertical Section (usft)	Closure Distance (usft)	Closure Azimuth (°)
0.0	0.00	0.00	0.0	7,065.00	0.0	0.0	0.00	0.00	0.0	0.00
Tie-In Pt										
183.0	0.40	69.10	183.0	6,882.00	0.2	0.6	0.22	0.55	0.6	69.10
395.0	0.70	93.90	395.0	6,670.01	0.4	2.6	0.18	2.47	2.6	81.11
486.0	0.90	98.50	486.0	6,579.02	0.3	3.8	0.23	3.73	3.9	86.12
547.0	1.50	104.00	547.0	6,518.04	0.0	5.1	1.00	5.01	5.1	90.04
608.0	1.80	104.50	607.9	6,457.06	-0.4	6.8	0.49	6.76	6.8	93.68
669.0	2.80	101.20	668.9	6,396.11	-1.0	9.2	1.65	9.21	9.2	96.01
759.0	4.70	102.10	758.7	6,306.31	-2.2	14.9	2.11	15.09	15.1	98.25
850.0	6.10	103.40	849.3	6,215.72	-4.1	23.3	1.54	23.64	23.6	99.91
941.0	7.50	100.20	939.6	6,125.36	-6.2	33.8	1.59	34.41	34.4	100.45
1,032.0	8.90	102.40	1,029.7	6,035.29	-8.8	46.6	1.58	47.39	47.4	100.71
1,124.0	10.30	100.20	1,120.4	5,944.58	-11.8	61.6	1.57	62.72	62.7	100.83
1,219.0	12.10	98.40	1,213.6	5,851.39	-14.7	79.8	1.93	81.17	81.2	100.47
1,314.0	13.70	98.90	1,306.2	5,758.80	-17.9	100.8	1.69	102.37	102.4	100.09
1,410.0	15.00	99.90	1,399.2	5,665.79	-21.8	124.3	1.38	126.16	126.2	99.97
1,502.0	16.70	101.90	1,487.7	5,577.29	-26.6	148.9	1.94	151.28	151.3	100.13
Surface Casing										
1,562.0	17.03	102.57	1,545.1	5,519.87	-30.3	165.9	0.64	168.68	168.7	100.35
1,593.0	17.20	102.90	1,574.8	5,490.25	-32.3	174.8	0.64	177.79	177.8	100.47
1,751.0	22.50	101.30	1,723.3	5,341.69	-43.5	227.3	3.37	231.39	231.4	100.82
1,847.0	23.70	100.60	1,811.6	5,253.39	-50.6	264.3	1.28	269.05	269.1	100.84
1,942.0	22.20	99.80	1,899.1	5,165.91	-57.2	300.7	1.61	306.10	306.1	100.76
2,038.0	23.30	98.20	1,987.6	5,077.38	-63.0	337.4	1.31	343.21	343.2	100.57
2,133.0	23.90	99.10	2,074.7	4,990.32	-68.7	375.0	0.74	381.22	381.2	100.38
2,228.0	23.90	97.40	2,161.5	4,903.47	-74.2	413.1	0.72	419.68	419.7	100.19
2,324.0	23.60	96.80	2,249.4	4,815.60	-79.0	451.4	0.40	458.28	458.3	99.93
2,420.0	24.00	99.80	2,337.2	4,727.76	-84.6	489.8	1.33	496.98	497.0	99.80
2,515.0	23.70	100.00	2,424.1	4,640.87	-91.2	527.6	0.33	535.40	535.4	99.81
2,610.0	23.20	100.40	2,511.3	4,553.72	-97.9	564.8	0.55	573.20	573.2	99.83
2,706.0	22.80	99.50	2,599.6	4,465.35	-104.4	601.7	0.55	610.71	610.7	99.84
2,801.0	22.40	100.00	2,687.4	4,377.65	-110.6	637.7	0.47	647.21	647.2	99.83
2,897.0	22.80	99.80	2,776.0	4,289.02	-116.9	674.1	0.42	684.10	684.1	99.84
2,992.0	22.60	103.60	2,863.6	4,201.37	-124.3	710.0	1.56	720.74	720.8	99.93
3,088.0	22.20	101.80	2,952.4	4,112.62	-132.4	745.6	0.83	757.28	757.3	100.07
3,183.0	23.30	102.90	3,040.0	4,025.01	-140.2	781.5	1.24	794.00	794.0	100.17
3,278.0	22.90	102.70	3,127.4	3,937.63	-148.5	817.9	0.43	831.23	831.2	100.29
3,374.0	22.00	101.60	3,216.1	3,848.90	-156.2	853.7	1.03	867.87	867.9	100.37
3,469.0	23.10	102.20	3,303.8	3,761.17	-163.7	889.3	1.18	904.29	904.3	100.43
3,565.0	22.60	102.70	3,392.3	3,672.70	-171.8	925.7	0.56	941.54	941.5	100.51
3,660.0	22.70	101.20	3,480.0	3,585.03	-179.3	961.5	0.62	978.11	978.1	100.57
3,756.0	21.60	100.00	3,568.9	3,496.11	-186.0	997.1	1.24	1,014.30	1,014.3	100.57
3,851.0	22.80	99.10	3,656.8	3,408.16	-192.0	1,032.5	1.31	1,050.19	1,050.2	100.53
3,946.0	21.70	98.00	3,744.8	3,320.23	-197.3	1,068.1	1.24	1,086.15	1,086.1	100.47
4,042.0	21.30	97.60	3,834.1	3,230.91	-202.1	1,102.9	0.44	1,121.29	1,121.3	100.38
4,137.0	21.60	101.40	3,922.5	3,142.49	-207.8	1,137.2	1.50	1,156.01	1,156.0	100.36
4,233.0	21.20	100.30	4,011.9	3,053.11	-214.4	1,171.6	0.59	1,191.04	1,191.0	100.37
4,328.0	20.70	100.30	4,100.6	2,964.39	-220.5	1,205.0	0.53	1,225.01	1,225.0	100.37
4,424.0	20.10	100.70	4,190.6	2,874.41	-226.6	1,237.9	0.64	1,258.47	1,258.5	100.37
4,520.0	16.70	102.70	4,281.7	2,783.33	-232.7	1,267.6	3.60	1,288.75	1,288.8	100.40
4,615.0	16.50	104.20	4,372.7	2,692.29	-239.0	1,294.0	0.50	1,315.85	1,315.9	100.46
4,710.0	13.90	110.60	4,464.4	2,600.62	-246.3	1,317.7	3.25	1,340.55	1,340.6	100.59

Company:	Wexpro Company	Local Co-ordinate Ref:	Well: Powder Wash Government #15
Project:	Moffat County, Colorado	Ground Level:	7,037.0 usft
Site:	Sec 15, T11N, R97W, 6 PM	Wellhead Elevation:	Field KB @ 7065.0usft (SST-88)
Well:	Powder Wash Government #15	North Reference:	True
Wellbore:	API #: 05-081-07628	Survey Calculation Method:	Minimum Curvature
Design:	Final Surveys (10554-159)	Database:	EDM 5000.1 Single User Db

Survey										
MD (usft)	Inc (°)	Azi (°)	TVD (usft)	SS (usft)	+N/-S (usft)	+E/-W (usft)	Dogleg Rate (°/100usft)	Vertical Section (usft)	Closure Distance (usft)	Closure Azimuth (°)
4,806.0	13.00	114.10	4,557.8	2,507.25	-254.8	1,338.4	1.26	1,362.38	1,362.4	100.78
4,901.0	12.60	113.30	4,650.4	2,414.61	-263.3	1,357.7	0.46	1,382.86	1,382.9	100.97
4,997.0	10.30	106.20	4,744.5	2,320.52	-269.8	1,375.5	2.81	1,401.61	1,401.7	101.10
5,092.0	9.30	102.00	4,838.1	2,226.91	-273.8	1,391.2	1.29	1,417.73	1,417.9	101.13
5,188.0	8.80	103.00	4,932.9	2,132.10	-277.0	1,405.9	0.55	1,432.82	1,433.0	101.15
5,283.0	6.20	104.50	5,027.1	2,037.93	-279.9	1,418.0	2.74	1,445.20	1,445.3	101.17
5,378.0	5.10	88.50	5,121.6	1,943.38	-281.1	1,427.2	2.01	1,454.45	1,454.6	101.14
5,474.0	2.30	100.60	5,217.4	1,847.59	-281.4	1,433.3	3.01	1,460.55	1,460.7	101.11
5,569.0	1.30	115.30	5,312.4	1,752.64	-282.2	1,436.2	1.15	1,463.50	1,463.6	101.12
5,664.0	0.90	107.80	5,407.3	1,657.66	-282.9	1,437.9	0.45	1,465.28	1,465.4	101.13
5,760.0	0.70	43.10	5,503.3	1,561.67	-282.7	1,439.0	0.91	1,466.34	1,466.5	101.11
5,855.0	0.60	313.60	5,598.3	1,466.67	-281.9	1,439.0	0.97	1,466.24	1,466.4	101.08
5,951.0	0.50	337.80	5,694.3	1,370.68	-281.2	1,438.5	0.26	1,465.60	1,465.7	101.06
6,046.0	0.00	221.90	5,789.3	1,275.68	-280.8	1,438.3	0.53	1,465.37	1,465.5	101.05
6,142.0	0.50	62.30	5,885.3	1,179.68	-280.6	1,438.7	0.52	1,465.70	1,465.8	101.04
6,237.0	0.60	66.40	5,980.3	1,084.68	-280.2	1,439.5	0.11	1,466.44	1,466.5	101.01
6,332.0	1.10	61.10	6,075.3	989.69	-279.5	1,440.8	0.53	1,467.56	1,467.6	100.98
6,428.0	1.30	5.90	6,171.3	893.71	-278.0	1,441.7	1.17	1,468.19	1,468.3	100.91
6,523.0	1.90	323.70	6,266.3	798.75	-275.7	1,440.9	1.35	1,466.96	1,467.0	100.83
6,619.0	1.80	286.80	6,362.2	702.79	-274.0	1,438.5	1.22	1,464.30	1,464.3	100.78
6,714.0	1.90	294.20	6,457.2	607.84	-272.9	1,435.6	0.27	1,461.29	1,461.3	100.76
6,809.0	1.90	282.40	6,552.1	512.90	-271.9	1,432.7	0.41	1,458.19	1,458.2	100.75
6,905.0	1.20	252.50	6,648.1	416.93	-271.9	1,430.1	1.09	1,455.71	1,455.7	100.76
7,000.0	1.20	272.40	6,743.0	321.95	-272.1	1,428.2	0.44	1,453.85	1,453.9	100.79
7,094.0	1.00	278.00	6,837.0	227.97	-272.0	1,426.4	0.24	1,452.05	1,452.1	100.79
7,190.0	0.70	285.00	6,933.0	131.98	-271.7	1,425.0	0.33	1,450.63	1,450.7	100.79
7,285.0	0.70	303.20	7,028.0	36.99	-271.2	1,424.0	0.23	1,449.52	1,449.6	100.78
7,380.0	0.50	306.50	7,123.0	-58.01	-270.7	1,423.1	0.21	1,448.61	1,448.6	100.77
Last MWD Survey										
7,476.0	0.40	315.70	7,219.0	-154.03	-270.2	1,422.6	0.13	1,447.96	1,448.0	100.75
TD Extrapolation										
9,921.0	0.40	315.70	9,664.0	-2,598.97	-258.0	1,410.6	0.00	1,434.04	1,434.0	100.36

Casing Points					
MD (usft)	TVD (usft)	Name	Casing Diameter (")	Hole Diameter (")	
1,562.0	1,545.1	Surface Csg	0	0	

Survey Annotations					
MD (usft)	TVD (usft)	Local Coordinates		Comment	
		+N/-S (usft)	+E/-W (usft)		
183.0	183.0	0.2	0.6	Tie-In Pt	
1,562.0	1,545.1	-30.3	165.9	Surface Casing	
7,476.0	7,219.0	-270.2	1,422.6	Last MWD Survey	
9,921.0	9,664.0	-258.0	1,410.6	TD Extrapolation	