
WPX ENERGY ROCKY MOUNTAIN LLC-EBUS

**SG 533-27
GRAND VALLEY
Garfield County , Colorado**

Cement Surface Casing **12-May-2012**

Post Job Summary

The Road to Excellence Starts with Safety

Sold To #: 300721	Ship To #: 2925163	Quote #:	Sales Order #: 9488052
Customer: WPX ENERGY ROCKY MOUNTAIN LLC-EBUS	Customer Rep: Duniho, Al		
Well Name: SG	Well #: 533-27	API/UWI #: 05-045-21018	
Field: GRAND VALLEY	City (SAP): PARACHUTE	County/Parish: Garfield	State: Colorado
Lat: N 39.404 deg. OR N 39 deg. 24 min. 15.93 secs.	Long: W 108.099 deg. OR W -109 deg. 54 min. 5.209 secs.		
Contractor: NABORS 573	Rig/Platform Name/Num: NABORS 573		
Job Purpose: Cement Surface Casing			
Well Type: Development Well	Job Type: Cement Surface Casing		
Sales Person: MAYO, MARK	Srvc Supervisor: CHASTAIN, DERICK	MBU ID Emp #: 455848	

Job Personnel

HES Emp Name	Exp Hrs	Emp #	HES Emp Name	Exp Hrs	Emp #	HES Emp Name	Exp Hrs	Emp #
CHASTAIN, DERICK Allan	12.5	455848	MUHLESTEIN, RYAN Herrick	12.5	453609	PARKER, BRANDON	12.5	503646
WEAVER, CARLTON Russell	12.5	457698						

Equipment

HES Unit #	Distance-1 way	HES Unit #	Distance-1 way	HES Unit #	Distance-1 way	HES Unit #	Distance-1 way
10551730C	60 mile	10565341	60 mile	10784064	60 mile	10951250	60 mile
10973571	60 mile	11006314	60 mile	11057893	60 mile	11808841	60 mile

Job Hours

Date	On Location Hours	Operating Hours	Date	On Location Hours	Operating Hours	Date	On Location Hours	Operating Hours
5/12/2012	12.5	3						

TOTAL	Total is the sum of each column separately							
-------	--	--	--	--	--	--	--	--

Job

Formation Name										Date	Time	Time Zone
Formation Depth (MD)		Top			Bottom				Called Out	12 - May - 2012	04:30	MST
Form Type					BHST				On Location	12 - May - 2012	08:45	MST
Job depth MD		1532. ft			Job Depth TVD		1532. ft		Job Started	12 - May - 2012	19:26	MST
Water Depth					Wk Ht Above Floor		3. ft		Job Completed	12 - May - 2012	20:38	GMT
Perforation Depth (MD)		From			To				Departed Loc	12 - May - 2012	21:30	MST

Well Data

Description	New / Used	Max pressure psig	Size in	ID in	Weight lbm/ft	Thread	Grade	Top MD ft	Bottom MD ft	Top TVD ft	Bottom TVD ft
OPEN HOLE				13.5				.	1532.		
SURFACE CASING	Unknown		9.625	9.001	32.3		H-40	.	1536.8		

Sales/Rental/3rd Party (HES)

Description	Qty	Qty uom	Depth	Supplier
PLUG,CMTG,TOP,9 5/8,HWE,8.16 MIN/9.06 MA	1	EA		

Tools and Accessories

Type	Size	Qty	Make	Depth	Type	Size	Qty	Make	Depth	Type	Size	Qty	Make
Guide Shoe					Packer					Top Plug	9 5/8	1	HES
Float Shoe					Bridge Plug					Bottom Plug			
Float Collar					Retainer					SSR plug set			
Insert Float										Plug Container	9 5/8	1	HES
Stage Tool										Centralizers			

Miscellaneous Materials

Gelling Agt	Conc	Surfactant	Conc	Acid Type	Qty	Conc	%
Treatment Fld	Conc	Inhibitor	Conc	Sand Type	Size		Qty

Fluid Data

Stage/Plug #: 1

Fluid #	Stage Type	Fluid Name	Qty	Qty uom	Mixing Density lbm/gal	Yield ft ³ /sk	Mix Fluid Gal/sk	Rate bbl/min	Total Mix Fluid Gal/sk
1	Fresh Water		20.00	bbl	8.33	.0	.0	3	
2	VersaCem Lead Cement	VERSACEM (TM) SYSTEM (452010)	235.0	sacks	12.3	2.38	13.75	8	13.75
	13.75 Gal	FRESH WATER							
3	VersaCem Tail Cement	VERSACEM (TM) SYSTEM (452010)	160.0	sacks	12.8	2.11	11.75	8	11.75
	11.75 Gal	FRESH WATER							
4	Displacement Fluid		119.00	bbl	8.34	.0	.0	10	
Calculated Values		Pressures		Volumes					
Displacement	118.8	Shut In: Instant		Lost Returns	0	Cement Slurry	159.7	Pad	
Top Of Cement	SURF	5 Min		Cement Returns	32	Actual Displacement	118.8	Treatment	
Frac Gradient		15 Min		Spacers	20	Load and Breakdown		Total Job	299
Rates									
Circulating	12	Mixing	8	Displacement	10	Avg. Job	7		
Cement Left In Pipe	Amount	27.6 ft	Reason	Shoe Joint					
Frac Ring # 1 @	ID	Frac ring # 2 @	ID	Frac Ring # 3 @	ID	Frac Ring # 4 @	ID		
The Information Stated Herein Is Correct				Customer Representative Signature					

The Road to Excellence Starts with Safety

Sold To #: 300721	Ship To #: 2925163	Quote #:	Sales Order #: 9488052
Customer: WPX ENERGY ROCKY MOUNTAIN LLC-EBUS		Customer Rep: Dunihoo, Al	
Well Name: SG		Well #: 533-27	API/UWI #: 05-045-21018
Field: GRAND VALLEY	City (SAP): PARACHUTE	County/Parish: Garfield	State: Colorado
Legal Description:			
Lat: N 39.404 deg. OR N 39 deg. 24 min. 15.93 secs.		Long: W 108.099 deg. OR W -109 deg. 54 min. 5.209 secs.	
Contractor: NABORS 573		Rig/Platform Name/Num: NABORS 573	
Job Purpose: Cement Surface Casing			Ticket Amount:
Well Type: Development Well		Job Type: Cement Surface Casing	
Sales Person: MAYO, MARK		Srvc Supervisor: CHASTAIN, DERICK	MBU ID Emp #: 455848

Activity Description	Date/Time	Cht #	Rate bbl/min	Volume bbl		Pressure psig		Comments
				Stage	Total	Tubing	Casing	
Call Out	05/12/2012 04:30							
Pre-Convoy Safety Meeting	05/12/2012 07:15							WITH ALL HES PERSONNEL SAFE DRIVING PRACTICES AND TRAVEL ROUTE REVIEWED
Arrive at Location from Service Center	05/12/2012 08:45							RIG PULLING DRILL PIPE
Assessment Of Location Safety Meeting	05/12/2012 09:00							WITH ALL HES PERSONNEL
Circulate Well	05/12/2012 17:45							RIG PULLING DP, RIG CIRCULATES THROUGH HES CMT HEAD, CIRC. 0.5 HR, 12 BPM, 124 PSI. MUD REPORT 10.3 PPG
Pre-Rig Up Safety Meeting	05/12/2012 18:20							WITH ALL HES PERSONNEL
Rig-Up Equipment	05/12/2012 18:30							1 ELITE HT 400 PUMP, 2 660 BULK TRUCK, 1 F-450 PICK-UP, 1 PLUG CONTAINER, 2" IRON TO STAND PIPE, 1 IRON TRAILER REQUESTED BY CO REP.
Pre-Job Safety Meeting	05/12/2012 19:00							WITH ALL HES PERSONNEL, RIG CREW AND CO REP
Start Job	05/12/2012 19:26							TD 1532', TP 1536.8', FC 1509.2', SJ 27.6', OH 13.5", SURFACE CASING 9.625" 32.3# H-40.

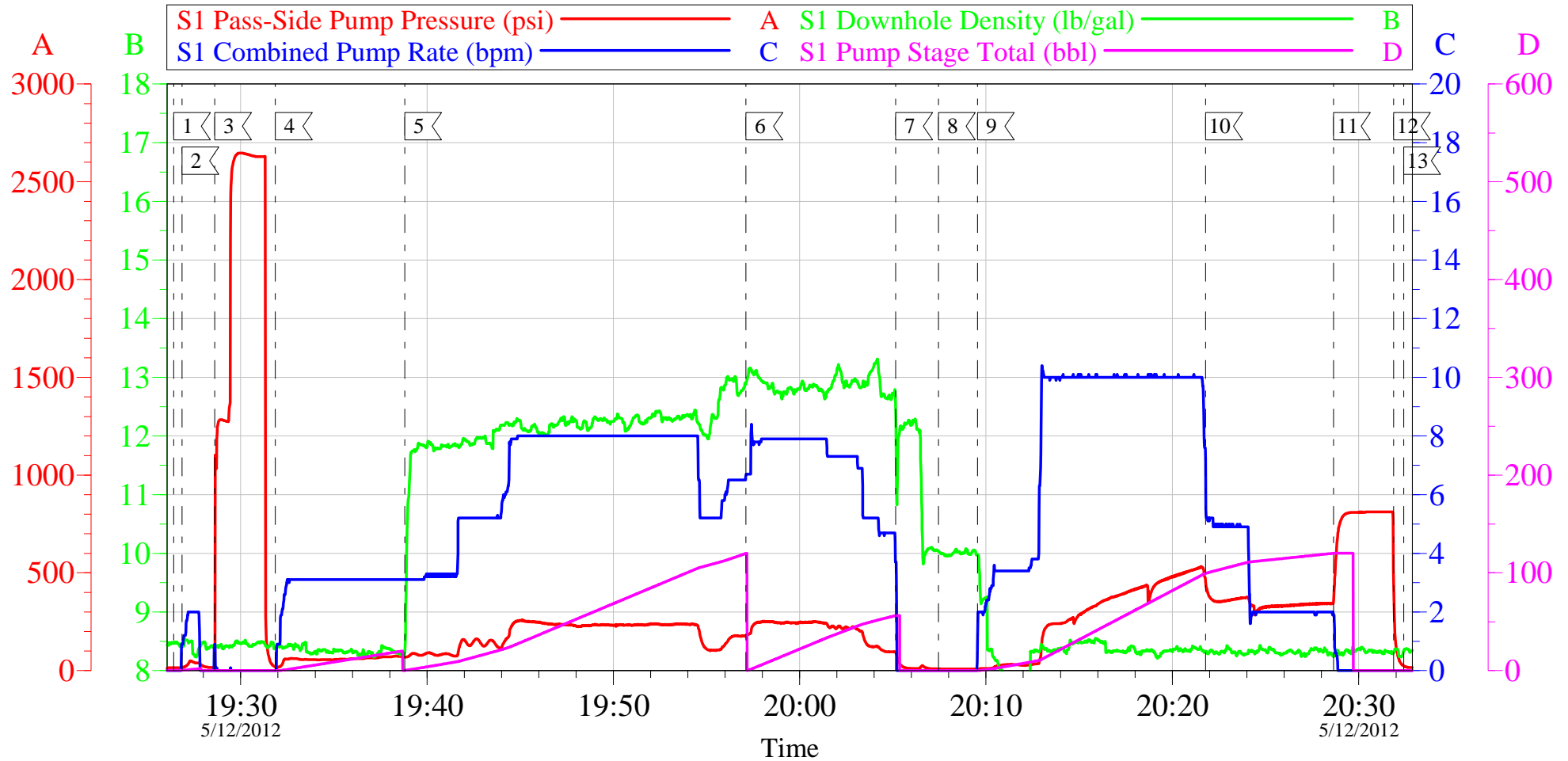
Activity Description	Date/Time	Cht #	Rate bbl/min	Volume bbl		Pressure psig		Comments
				Stage	Total	Tubing	Casing	
Pump Water	05/12/2012 19:26		2	2			48.0	FRESH H2O, TO PRIME LINES
Test Lines	05/12/2012 19:28							PUMPS STALLED AT 1260 PSI, THEN TESTED TO 2647 PSI. HELD PSI 2 MIN NO LEAKS
Pump Spacer 1	05/12/2012 19:31		3	20			75.0	FRESH H2O
Pump Lead Cement	05/12/2012 19:38		8	99.6			250.0	235 SKS 12.3 PPG 2.38 FT3/SK 13.75 GAL/SK WEIGHED VERIFIED VIA MUD SCALES WET AND DRY SAMPLES SUBMITTED. TUB WEIGHED UP FINE BUT WENT DOWNHOLE LIGHT. DOWN HOLE WAS AUTOCALED. ADC WOULD NOT MIX SO CEMENT WAS MIXED ON HAND.
Pump Tail Cement	05/12/2012 19:57		8	60.1			252.0	160 SKS 12.8 PPG 2.11 FT3/SK 11.75 GAL/SK WEIGHED VERIFIED VIA MUD SCALES WET AND DRY SAMPLES SUBMITTED. ADC WOULD NOT MIX SO CEMENT WAS MIXED ON HAND.
Shutdown	05/12/2012 20:05							WASH UP ON TOP OF PLUG
Drop Top Plug	05/12/2012 20:07							VERIFY PLUG LAUNCHED
Pump Displacement	05/12/2012 20:09		10	118.8			512.0	CMT RETURNS 88 BBLS INTO DIS, 32 BBLS TO SURFACE
Slow Rate	05/12/2012 20:21		2	109			325.0	SLOW RATE 10 BBLS PRIOR TO CALCULATED DISPLACEMENT
Bump Plug	05/12/2012 20:28		2	118.8			886.0	PLUG LANDED AT 325 PSI THEN BUMPED UP TO 886 PSI. HOLD 2 MINS
Activity Description	Date/Time	Cht	Rate bbl/min	Volume bbl		Pressure psig		Comments

Cementing Job Log

		#		Stage	Total	Tubing	Casing	
Check Floats	05/12/2012 20:31							FLOATS HOLDING, GOOD RETURNS THROUGHOUT JOB
End Job	05/12/2012 20:32							3 ADD HOURS CHARGED. NO DERRICK CHARGE. 100 LBS SUGAR USED
Pre-Rig Down Safety Meeting	05/12/2012 20:40							WITH ALL HES PERSONNEL
Rig-Down Equipment	05/12/2012 20:45							AREA FREE FROM DEBRIS
Pre-Convoy Safety Meeting	05/12/2012 21:15							WITH ALL HES PERSONNEL
Crew Leave Location	05/12/2012 21:30							THANK YOU FOR CHOOSING HALLIBURTON CEMENT. DERICK CHASTAIN AND CREW

WPX - SG 533-27

9 5/8" Surface Casing



Local Event Log

1 START JOB	19:26:24	2 FILL LINES	19:26:51	3 TEST LINES	19:28:36
4 PUMP H2O SPACER	19:31:52	5 PUMP LEAD CEMENT	19:38:48	6 PUMP TAIL CEMENT	19:57:07
7 SHUTDOWN	20:05:09	8 DROP TOP PLUG	20:07:27	9 PUMP DISPLACEMENT	20:09:32
10 SLOW RATE	20:21:47	11 BUMP PLUG	20:28:39	12 CHECK FLOATS	20:31:52
13 END JOB	20:32:25				

Customer: WPX
Well Description: SG 533-27
Company Rep: Al Duniho

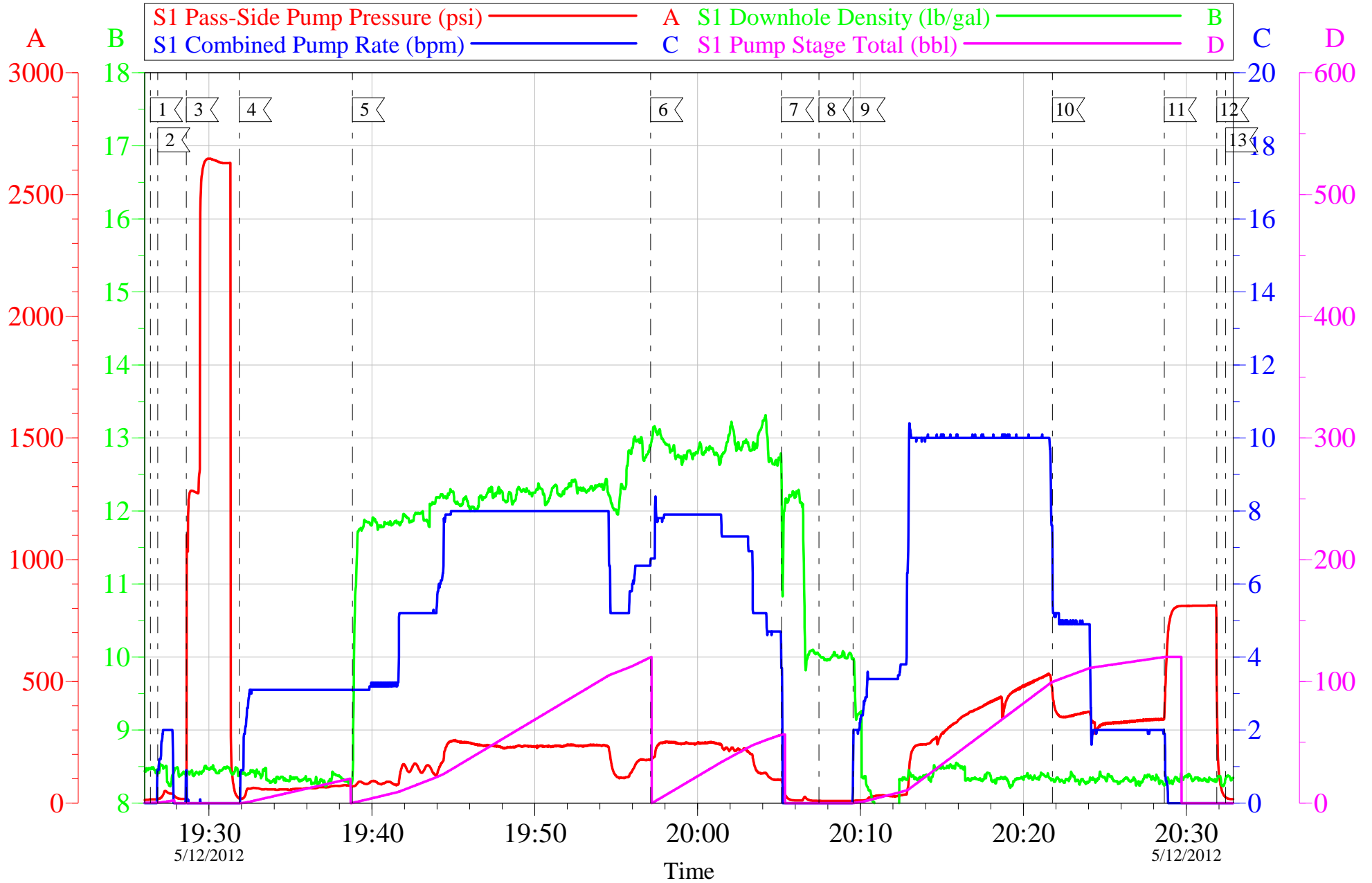
Job Date: 12-May-2012
Job Type: Surface Casing
Cement Supervisor: Derick Chastain

Sales Order #: 9488052
ADC Used: No
Elite #2: Ryan Muhlestein

OptiCem v6.4.10
12-May-12 20:45

WPX - SG 533-27

9 5/8" Surface Casing



Customer: WPX	Job Date: 12-May-2012	Sales Order #: 9488052
Well Description: SG 533-27	Job Type: Surface Casing	ADC Used: No
Company Rep: Al Duniho	Cement Supervisor: Derick Chastain	Elite #2: Ryan Muhlestein

OptiCem v6.4.10
12-May-12 20:45

HALLIBURTON

Water Analysis Report

Company: WPX
Submitted by: DERICK CHASTAIN
Attention: J. Trout
Lease SG
Well # 533-27

Date: 5/12/2012
Date Rec.: 5/12/2012
S.O.# 9488052
Job Type: SURFACE

Specific Gravity	<i>MAX</i>	1
pH	<i>8</i>	7
Potassium (K)	<i>5000</i>	0 Mg / L
Calcium (Ca)	<i>500</i>	0 Mg / L
Iron (FE2)	<i>300</i>	100 Mg / L
Chlorides (Cl)	<i>3000</i>	0 Mg / L
Sulfates (SO ₄)	<i>1500</i>	200 Mg / L
Chlorine (Cl ₂)		0 Mg / L
Temp	<i>40-80</i>	62 Deg
Total Dissolved Solids		180 Mg / L

Respectfully: DERICK CHASTAIN

Title: CEMENTING SUPERVISOR

Location: Grand Junction, CO

NOTICE:

This report is limited to the described sample tested. Any person using or relying on this report agrees that Halliburton shall not be liable for any loss or damage whether due to act or omission resulting from such report or its use

Sales Order #: 9488052	Line Item: 10	Survey Conducted Date: 5/12/2012
Customer: WPX ENERGY ROCKY MOUNTAIN LLC-EBUS		Job Type (BOM): CMT SURFACE CASING BOM
Customer Representative: AL DUNIHO		API / UWI: (leave blank if unknown) 05-045-21018
Well Name: SG		Well Number: 533-27
Well Type: Development Well	Well Country: United States of America	
H2S Present:	Well State: Colorado	Well County: Garfield

Dear Customer,

We hope that you were satisfied with the service quality of this job performed by Halliburton. It is the aim of our management and service personnel to deliver equipment and service of a standard unmatched in the service sector of the energy industry.

Please take the time to let us know if our performance met with your satisfaction. Please be as critical as possible to ensure we constantly improve our service. Your comments are of great value to us and are intended for the exclusive use of Halliburton.

CUSTOMER SATISFACTION SURVEY

CATEGORY	CUSTOMER SATISFACTION RESPONSE	
Survey Conducted Date	The date the survey was conducted	5/12/2012
Survey Interviewer	The survey interviewer is the person who initiated the survey.	DERICK CHASTAIN (HB23225)
Customer Participation	Did the customer participate in this survey? (Y/N)	Yes
Customer Representative	Enter the Customer representative name	AL DUNIHO
HSE	Was our HSE performance satisfactory? Circle Y or N	Yes
Equipment	Were you satisfied with our Equipment? Circle Y or N	Yes
Personnel	Were you satisfied with our people? Circle Y or N	Yes
Customer Comment	Customer's Comment	GOOD JOB MEN!

CUSTOMER SIGNATURE

Sales Order #: 9488052	Line Item: 10	Survey Conducted Date: 5/12/2012
Customer: WPX ENERGY ROCKY MOUNTAIN LLC-EBUS		Job Type (BOM): CMT SURFACE CASING BOM
Customer Representative: AL DUNIHO		API / UWI: (leave blank if unknown) 05-045-21018
Well Name: SG		Well Number: 533-27
Well Type: Development Well	Well Country: United States of America	
H2S Present:	Well State: Colorado	Well County: Garfield

KEY PERFORMANCE INDICATORS

General	
Survey Conducted Date	5/12/2012
The date the survey was conducted	

Cementing KPI Survey	
Type of Job	0
Select the type of job. (Cementing or Non-Cementing)	
Select the Maximum Deviation range for this Job	Vertical
What is the highest deviation for the job you just completed? This may not be the maximum well deviation.	
Total Operating Time (hours)	2
Total Operating Hours Including Rig-up, Pumping, Rig-down. Enter in decimal format.	
HSE Incident, Accident, Injury	No
HSE Incident, Accident, Injury. This should be recordable incidents only.	
Was the job purpose achieved?	Yes
Was the job delivered correctly as per customer agreed design?	
Operating Hours (Pumping Hours)	1
Total number of hours pumping fluid on this job. Enter in decimal format.	
Customer Non-Productive Rig Time (hrs)	0
Lost time due to Halliburton in the start, execution, or completion of an ordered service or product, or delays in a follow-on service. Enter in decimal format. 0 if none.	
Type of Rig Classification Job Was Performed	Drilling Rig (Portable)
Type Of Rig (classification) Job Was Performed On	
Number Of JSAs Performed	4
Number Of Jsas Performed	
Number of Unplanned Shutdowns	0
Unplanned shutdown is when injection stops for any period of time.	
Was this a Primary Cement Job (Yes / No)	Yes

Sales Order #: 9488052	Line Item: 10	Survey Conducted Date: 5/12/2012
Customer: WPX ENERGY ROCKY MOUNTAIN LLC-EBUS		Job Type (BOM): CMT SURFACE CASING BOM
Customer Representative: AL DUNIHO		API / UWI: (leave blank if unknown) 05-045-21018
Well Name: SG		Well Number: 533-27
Well Type: Development Well	Well Country: United States of America	
H2S Present:	Well State: Colorado	Well County: Garfield

Primary Cement Job= Casing job, Liner job, or Tie-back job.	
Did We Run Wiper Plugs? Did We Run Top And Bottom Casing Wiper Plugs?	Top
Mixing Density of Job Stayed in Designed Density Range (0-100%) Density Range defined as +/- .20 ppg. Calculation: Total BBLs cement mixed at designed density divided by total BBLs of cement multiplied by 100	90
Was Automated Density Control Used? Was Automated Density Control (ADC) Used ?	No
Pump Rate (percent) of Job Stayed At Designed Pump Rate Pump Rate range defined as +/- 1bbl/min. Calculation: Total BBLs of fluid pumped at the designed rate divided by Total BBLs of fluid pumped, multiplied by 100	90
Nbr of Remedial Sqz Jobs Rqd - Competition Number Of Remedial Squeeze Jobs Required After Primary Job Performed By Competition	0
Nbr of Remedial Plug Jobs Rqd - HES Number Of Remedial Plug Jobs Needed After Primary Plug Pumped By HES	0
Nbr of Remedial Sqz Jobs Rqd - HES Number Of Remedial Squeeze Jobs Required After Primary Job Performed By HES	0