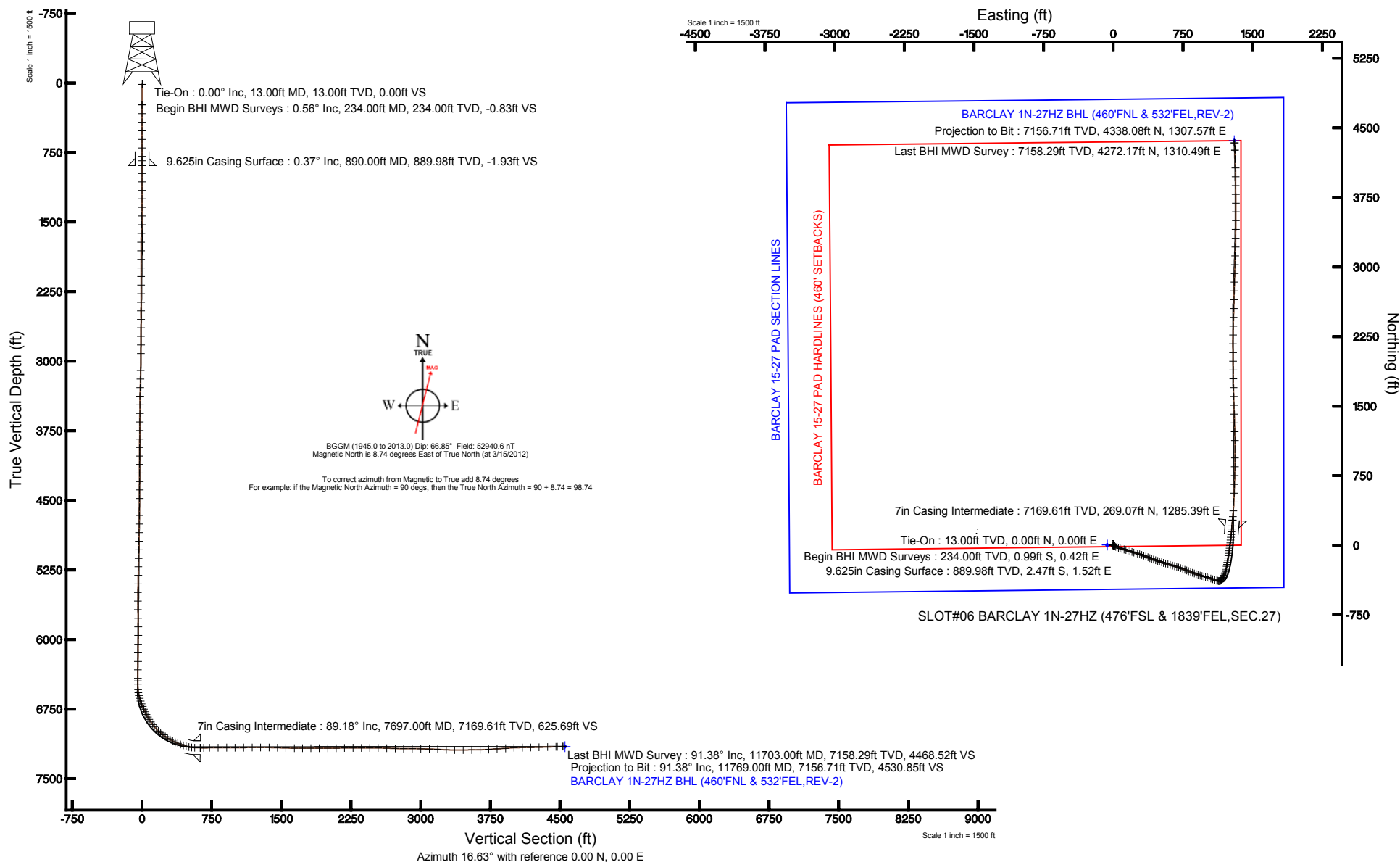


KERR-MCGEE OIL & GAS ONSHORE LP

Location: COLORADO Slot: SLOT#06 BARCLAY 1N-27HZ (476°FSL & 1839°FEL,SEC.27)
 Field: WELD COUNTY (KERR MCGEE) Well: BARCLAY 1N-27HZ
 Facility: SEC.27-T3N-R66W Wellbore: BARCLAY 1N-27HZ PWB

Plot reference wellpath is BARCLAY 1N-27HZ (REV-A.0) PWP	
True vertical depths are referenced to ENSIGN 145 (RKB)	Grid System: NAD83 / Lambert Colorado SP, Northern Zone (501), US feet
Measured depths are referenced to ENSIGN 145 (RKB)	North Reference: True north
ENSGN 145 (RKB) to Mean Sea Level: 4969 feet	Scale: True distance
Mean Sea Level to Mud line (At Slot: SLOT#06 BARCLAY 1N-27HZ (476°FSL & 1839°FEL,SEC.27)): 0 feet	Depths are in feet
Coordinates are in feet referenced to Slot	Created by: wilsjef02 on 4/30/2012





Actual Wellpath Report

BARCLAY 1N-27HZ AWP

Page 1 of 7



REFERENCE WELLPATH IDENTIFICATION

Operator	KERR-MCGEE OIL & GAS ONSHORE LP	Slot	SLOT#06 BARCLAY 1N-27HZ (476'FSL & 1839'FEL,SEC.27)
Area	COLORADO	Well	BARCLAY 1N-27HZ
Field	WELD COUNTY (KERR MCGEE)	Wellbore	BARCLAY 1N-27HZ AWB
Facility	SEC.27-T3N-R66W		

REPORT SETUP INFORMATION

Projection System	NAD83 / Lambert Colorado SP, Northern Zone (501), US feet	Software System	WellArchitect® 3.0.2
North Reference	True	User	Wilsjef02
Scale	0.999957	Report Generated	4/30/2012 at 09:22:53
Convergence at slot	0.48° East	Database/Source file	WellArchitectDB\BARCLAY_1N-27HZ_AWB.xml

WELLPATH LOCATION

	Local coordinates		Grid coordinates		Geographic coordinates	
	North[ft]	East[ft]	Easting[US ft]	Northing[US ft]	Latitude	Longitude
Slot Location	-4347.75	2857.80	3206634.96	1312996.10	40°11'24.738"N	104°45'37.264"W
Facility Reference Pt			3203741.63	1317320.00	40°12'07.704"N	104°46'14.088"W
Field Reference Pt			3197771.84	1268891.29	40°04'09.600"N	104°47'36.000"W

WELLPATH DATUM

Calculation method	Minimum curvature	ENSIGN 145 (RKB) to Facility Vertical Datum	4969.00ft
Horizontal Reference Pt	Slot	ENSIGN 145 (RKB) to Mean Sea Level	4969.00ft
Vertical Reference Pt	ENSIGN 145 (RKB)	ENSIGN 145 (RKB) to Mud Line at Slot (SLOT#06 BARCLAY 1N-27HZ (476'FSL & 1839'FEL,SEC.27))	4969.00ft
MD Reference Pt	ENSIGN 145 (RKB)	Section Origin	N 0.00, E 0.00 ft
Field Vertical Reference	Mean Sea Level	Section Azimuth	16.63°



Actual Wellpath Report

BARCLAY 1N-27HZ AWP

Page 2 of 7



REFERENCE WELLPATH IDENTIFICATION			
Operator	KERR-MCGEE OIL & GAS ONSHORE LP	Slot	SLOT#06 BARCLAY 1N-27HZ (476'FSL & 1839'FEL,SEC.27)
Area	COLORADO	Well	BARCLAY 1N-27HZ
Field	WELD COUNTY (KERR MCGEE)	Wellbore	BARCLAY 1N-27HZ AWB
Facility	SEC.27-T3N-R66W		

WELLPATH DATA (150 stations) † = interpolated/extrapolated station										
MD [ft]	Inclination [°]	Azimuth [°]	TVD [ft]	Vert Sect [ft]	North [ft]	East [ft]	Latitude	Longitude	DLS [°/100ft]	Comments
0.00†	0.000	156.860	0.00	0.00	0.00	0.00	40°11'24.738"N	104°45'37.264"W	0.00	
13.00	0.000	156.860	13.00	0.00	0.00	0.00	40°11'24.738"N	104°45'37.264"W	0.00	Tie-On
234.00	0.560	156.860	234.00	-0.83	-0.99	0.42	40°11'24.728"N	104°45'37.259"W	0.25	Begin BHI MWD Surveys
330.00	0.750	144.800	329.99	-1.58	-1.94	0.97	40°11'24.719"N	104°45'37.251"W	0.24	
422.00	0.570	145.730	421.98	-2.24	-2.81	1.58	40°11'24.710"N	104°45'37.244"W	0.20	
515.00	0.350	141.140	514.98	-2.69	-3.41	2.01	40°11'24.704"N	104°45'37.238"W	0.24	
607.00	0.180	48.160	606.98	-2.73	-3.53	2.30	40°11'24.703"N	104°45'37.234"W	0.44	
699.00	0.240	328.660	698.98	-2.48	-3.27	2.31	40°11'24.706"N	104°45'37.234"W	0.30	
791.00	0.500	300.860	790.98	-2.25	-2.90	1.86	40°11'24.709"N	104°45'37.240"W	0.34	
837.00	0.240	344.690	836.98	-2.12	-2.71	1.66	40°11'24.711"N	104°45'37.243"W	0.80	
974.00	0.640	305.160	973.97	-1.63	-1.99	0.96	40°11'24.718"N	104°45'37.252"W	0.35	
1065.00	0.620	320.150	1064.97	-1.20	-1.32	0.23	40°11'24.725"N	104°45'37.261"W	0.18	
1157.00	0.460	336.310	1156.96	-0.64	-0.60	-0.24	40°11'24.732"N	104°45'37.267"W	0.24	
1249.00	1.180	127.410	1248.96	-0.70	-0.84	0.37	40°11'24.730"N	104°45'37.259"W	1.74	
1341.00	3.250	119.270	1340.88	-1.60	-2.69	3.40	40°11'24.711"N	104°45'37.220"W	2.27	
1433.00	5.030	121.480	1432.64	-3.21	-6.07	9.11	40°11'24.678"N	104°45'37.147"W	1.94	
1528.00	6.790	123.770	1527.13	-5.93	-11.36	17.33	40°11'24.626"N	104°45'37.041"W	1.87	
1623.00	8.790	119.570	1621.25	-9.21	-18.07	28.31	40°11'24.559"N	104°45'36.899"W	2.19	
1718.00	9.230	110.920	1715.08	-11.41	-24.37	41.74	40°11'24.497"N	104°45'36.726"W	1.50	
1813.00	10.470	106.340	1808.68	-11.93	-29.52	57.15	40°11'24.446"N	104°45'36.528"W	1.54	
1908.00	12.290	107.620	1901.81	-12.06	-35.01	75.07	40°11'24.392"N	104°45'36.297"W	1.93	
2003.00	12.950	104.880	1994.52	-11.91	-40.80	94.99	40°11'24.335"N	104°45'36.040"W	0.94	
2098.00	13.860	106.090	2086.93	-11.48	-46.69	116.21	40°11'24.277"N	104°45'35.767"W	1.00	
2193.00	14.120	107.380	2179.11	-11.52	-53.31	138.20	40°11'24.211"N	104°45'35.483"W	0.43	
2288.00	12.940	109.480	2271.47	-12.20	-60.32	159.29	40°11'24.142"N	104°45'35.211"W	1.35	
2383.00	13.680	107.330	2363.92	-12.87	-67.21	180.04	40°11'24.074"N	104°45'34.944"W	0.94	
2478.00	14.110	107.720	2456.14	-13.23	-74.08	201.80	40°11'24.006"N	104°45'34.664"W	0.46	
2573.00	13.300	104.120	2548.44	-12.97	-80.27	223.43	40°11'23.945"N	104°45'34.385"W	1.24	
2667.00	12.570	110.290	2640.05	-13.15	-86.46	243.51	40°11'23.884"N	104°45'34.126"W	1.66	
2762.00	12.360	105.900	2732.82	-13.68	-92.83	262.98	40°11'23.821"N	104°45'33.875"W	1.02	
2857.00	13.670	105.350	2825.38	-13.30	-98.58	283.59	40°11'23.764"N	104°45'33.610"W	1.39	
2952.00	15.190	108.690	2917.38	-13.50	-105.54	306.20	40°11'23.695"N	104°45'33.318"W	1.82	
3047.00	15.210	111.210	3009.05	-14.94	-114.04	329.61	40°11'23.611"N	104°45'33.017"W	0.70	
3142.00	15.160	110.490	3100.74	-16.77	-122.90	352.86	40°11'23.524"N	104°45'32.717"W	0.21	
3237.00	13.060	113.710	3192.87	-18.93	-131.56	374.33	40°11'23.438"N	104°45'32.441"W	2.36	
3332.00	13.050	113.110	3285.41	-21.46	-140.09	394.02	40°11'23.354"N	104°45'32.187"W	0.14	
3427.00	13.240	110.340	3377.92	-23.38	-148.08	414.09	40°11'23.275"N	104°45'31.928"W	0.69	
3522.00	13.470	109.220	3470.36	-24.58	-155.50	434.74	40°11'23.201"N	104°45'31.662"W	0.36	
3617.00	14.490	108.720	3562.54	-25.51	-162.96	456.44	40°11'23.128"N	104°45'31.383"W	1.08	
3712.00	13.750	108.690	3654.67	-26.35	-170.39	478.39	40°11'23.054"N	104°45'31.100"W	0.78	
3807.00	13.590	109.100	3746.98	-27.24	-177.66	499.64	40°11'22.982"N	104°45'30.826"W	0.20	
3902.00	13.580	108.200	3839.32	-28.03	-184.80	520.78	40°11'22.912"N	104°45'30.554"W	0.22	
3997.00	14.640	107.170	3931.45	-28.44	-191.83	542.84	40°11'22.842"N	104°45'30.269"W	1.15	
4091.00	14.490	107.370	4022.43	-28.71	-198.84	565.42	40°11'22.773"N	104°45'29.978"W	0.17	
4186.00	15.740	106.720	4114.14	-28.88	-206.10	589.10	40°11'22.701"N	104°45'29.673"W	1.33	



Actual Wellpath Report

BARCLAY 1N-27HZ AWP

Page 3 of 7



REFERENCE WELLPATH IDENTIFICATION			
Operator	KERR-MCGEE OIL & GAS ONSHORE LP	Slot	SLOT#06 BARCLAY 1N-27HZ (476'FSL & 1839'FEL,SEC.27)
Area	COLORADO	Well	BARCLAY 1N-27HZ
Field	WELD COUNTY (KERR MCGEE)	Wellbore	BARCLAY 1N-27HZ AWB
Facility	SEC.27-T3N-R66W		

WELLPATH DATA (150 stations)

MD [ft]	Inclination [°]	Azimuth [°]	TVD [ft]	Vert Sect [ft]	North [ft]	East [ft]	Latitude	Longitude	DLS [°/100ft]	Comments
4282.00	15.880	105.280	4206.51	-28.59	-213.31	614.24	40°11'22.630"N	104°45'29.349"W	0.43	
4376.00	15.240	106.130	4297.07	-28.18	-220.13	638.52	40°11'22.563"N	104°45'29.037"W	0.72	
4471.00	14.100	106.670	4388.97	-28.08	-226.92	661.60	40°11'22.496"N	104°45'28.739"W	1.21	
4566.00	13.650	106.680	4481.20	-28.10	-233.45	683.42	40°11'22.431"N	104°45'28.458"W	0.47	
4661.00	14.030	108.460	4573.44	-28.48	-240.32	705.08	40°11'22.363"N	104°45'28.179"W	0.60	
4755.00	14.290	110.500	4664.58	-29.62	-247.99	726.76	40°11'22.287"N	104°45'27.900"W	0.60	
4850.00	14.410	112.210	4756.62	-31.56	-256.56	748.68	40°11'22.203"N	104°45'27.617"W	0.46	
4945.00	14.460	112.350	4848.62	-33.90	-265.54	770.59	40°11'22.114"N	104°45'27.335"W	0.06	
5040.00	13.700	110.690	4940.77	-35.87	-274.03	792.09	40°11'22.030"N	104°45'27.058"W	0.91	
5135.00	13.300	111.510	5033.14	-37.60	-282.01	812.78	40°11'21.951"N	104°45'26.791"W	0.47	
5230.00	13.660	112.080	5125.52	-39.59	-290.23	833.34	40°11'21.870"N	104°45'26.526"W	0.40	
5325.00	13.850	110.870	5217.80	-41.50	-298.50	854.36	40°11'21.788"N	104°45'26.255"W	0.36	
5419.00	12.890	111.030	5309.25	-43.14	-306.27	874.66	40°11'21.711"N	104°45'25.994"W	1.02	
5514.00	13.160	111.560	5401.81	-44.88	-314.05	894.61	40°11'21.634"N	104°45'25.737"W	0.31	
5609.00	13.700	109.930	5494.21	-46.46	-321.86	915.24	40°11'21.557"N	104°45'25.471"W	0.69	
5704.00	12.900	105.770	5586.66	-46.94	-328.57	936.02	40°11'21.491"N	104°45'25.203"W	1.31	
5799.00	12.140	102.180	5679.40	-46.01	-333.56	956.00	40°11'21.442"N	104°45'24.946"W	1.14	
5894.00	12.080	102.040	5772.29	-44.44	-337.74	975.48	40°11'21.400"N	104°45'24.695"W	0.07	
5989.00	12.110	103.070	5865.18	-43.03	-342.07	994.91	40°11'21.357"N	104°45'24.444"W	0.23	
6084.00	11.660	109.590	5958.15	-42.90	-347.54	1013.66	40°11'21.303"N	104°45'24.203"W	1.49	
6179.00	11.670	111.760	6051.19	-44.26	-354.32	1031.63	40°11'21.236"N	104°45'23.971"W	0.46	
6274.00	12.730	107.430	6144.04	-45.26	-361.02	1050.54	40°11'21.170"N	104°45'23.727"W	1.47	
6369.00	14.270	107.980	6236.41	-45.68	-367.77	1071.67	40°11'21.103"N	104°45'23.455"W	1.63	
6464.00	14.830	108.280	6328.37	-46.31	-375.20	1094.35	40°11'21.030"N	104°45'23.163"W	0.59	
6559.00	14.060	106.130	6420.36	-46.56	-382.22	1116.98	40°11'20.961"N	104°45'22.871"W	0.99	
6588.00	13.430	106.220	6448.53	-46.50	-384.14	1123.59	40°11'20.942"N	104°45'22.786"W	2.17	
6622.00	13.080	106.050	6481.63	-46.44	-386.30	1131.08	40°11'20.920"N	104°45'22.690"W	1.04	
6654.00	11.870	102.980	6512.87	-46.19	-388.04	1137.77	40°11'20.903"N	104°45'22.604"W	4.31	
6685.00	11.520	82.790	6543.24	-44.74	-388.37	1143.95	40°11'20.900"N	104°45'22.524"W	13.18	
6717.00	12.830	66.040	6574.53	-41.13	-386.53	1150.37	40°11'20.918"N	104°45'22.441"W	11.72	
6749.00	15.210	53.710	6605.58	-35.47	-382.60	1157.00	40°11'20.957"N	104°45'22.356"W	11.90	
6780.00	17.980	43.340	6635.29	-27.95	-376.71	1163.57	40°11'21.015"N	104°45'22.271"W	13.05	
6812.00	20.570	34.800	6665.50	-18.19	-368.50	1170.17	40°11'21.096"N	104°45'22.186"W	11.94	
6843.00	23.030	32.040	6694.29	-7.17	-358.88	1176.49	40°11'21.191"N	104°45'22.105"W	8.59	
6875.00	23.310	29.940	6723.71	5.03	-348.09	1182.97	40°11'21.298"N	104°45'22.021"W	2.73	
6907.00	23.590	27.680	6753.06	17.47	-336.94	1189.11	40°11'21.408"N	104°45'21.942"W	2.94	
6938.00	25.710	28.570	6781.24	30.14	-325.54	1195.21	40°11'21.521"N	104°45'21.863"W	6.94	
6970.00	28.160	25.710	6809.76	44.39	-312.63	1201.80	40°11'21.648"N	104°45'21.778"W	8.66	
7002.00	29.940	18.310	6837.75	59.84	-298.24	1207.59	40°11'21.790"N	104°45'21.704"W	12.52	
7033.00	33.000	13.290	6864.19	76.00	-282.68	1211.96	40°11'21.944"N	104°45'21.647"W	12.99	
7065.00	34.320	10.710	6890.82	93.68	-265.33	1215.64	40°11'22.116"N	104°45'21.600"W	6.08	
7097.00	36.130	9.990	6916.96	112.02	-247.17	1218.96	40°11'22.295"N	104°45'21.557"W	5.80	
7128.00	40.240	10.150	6941.32	131.06	-228.31	1222.31	40°11'22.482"N	104°45'21.514"W	13.26	
7160.00	42.970	9.720	6965.25	152.16	-207.38	1225.97	40°11'22.688"N	104°45'21.467"W	8.58	
7191.00	45.490	9.780	6987.46	173.62	-186.07	1229.63	40°11'22.899"N	104°45'21.420"W	8.13	



Actual Wellpath Report

BARCLAY 1N-27HZ AWP

Page 4 of 7



REFERENCE WELLPATH IDENTIFICATION

Operator	KERR-MCGEE OIL & GAS ONSHORE LP	Slot	SLOT#06 BARCLAY 1N-27HZ (476'FSL & 1839'FEL,SEC.27)
Area	COLORADO	Well	BARCLAY 1N-27HZ
Field	WELD COUNTY (KERR MCGEE)	Wellbore	BARCLAY 1N-27HZ AWB
Facility	SEC.27-T3N-R66W		

WELLPATH DATA (150 stations) † = interpolated/extrapolated station

MD [ft]	Inclination [°]	Azimuth [°]	TVD [ft]	Vert Sect [ft]	North [ft]	East [ft]	Latitude	Longitude	DLS [°/100ft]	Comments
7223.00	50.060	9.790	7008.96	197.15	-162.73	1233.66	40°11'23.130"N	104°45'21.368"W	14.28	
7255.00	52.860	9.300	7028.90	221.98	-138.05	1237.81	40°11'23.374"N	104°45'21.314"W	8.83	
7286.00	54.420	8.920	7047.28	246.73	-113.40	1241.76	40°11'23.617"N	104°45'21.263"W	5.13	
7318.00	58.310	8.680	7065.00	273.12	-87.07	1245.83	40°11'23.877"N	104°45'21.211"W	12.17	
7350.00	59.640	8.340	7081.49	300.26	-59.95	1249.89	40°11'24.145"N	104°45'21.159"W	4.25	
7381.00	61.960	7.370	7096.61	327.01	-33.15	1253.58	40°11'24.410"N	104°45'21.111"W	7.97	
7413.00	66.780	7.180	7110.45	355.47	-4.54	1257.24	40°11'24.693"N	104°45'21.064"W	15.07	
7444.00	69.850	6.800	7121.90	383.86	24.05	1260.74	40°11'24.975"N	104°45'21.019"W	9.97	
7476.00	70.560	6.840	7132.74	413.53	53.95	1264.32	40°11'25.271"N	104°45'20.973"W	2.22	
7508.00	70.890	6.460	7143.30	443.28	83.95	1267.81	40°11'25.567"N	104°45'20.928"W	1.52	
7539.00	73.260	6.290	7152.84	472.30	113.26	1271.09	40°11'25.857"N	104°45'20.885"W	7.66	
7571.00	78.030	5.170	7160.78	502.73	144.10	1274.18	40°11'26.162"N	104°45'20.846"W	15.29	
7603.00	83.730	5.520	7165.85	533.70	175.54	1277.12	40°11'26.472"N	104°45'20.808"W	17.85	
7634.00	88.030	4.990	7168.07	564.01	206.33	1279.95	40°11'26.777"N	104°45'20.771"W	13.98	
7697.00†	89.178	4.921	7169.61	625.69	269.07	1285.39	40°11'27.397"N	104°45'20.701"W	1.83	7" Casing Point
7735.00	89.870	4.880	7169.92	662.89	306.93	1288.64	40°11'27.771"N	104°45'20.659"W	1.83	
7798.00	91.170	4.700	7169.35	724.55	369.71	1293.90	40°11'28.391"N	104°45'20.591"W	2.08	
7893.00	90.830	2.390	7167.69	817.06	464.50	1299.77	40°11'29.328"N	104°45'20.516"W	2.46	
7988.00	89.530	1.930	7167.39	909.04	559.43	1303.35	40°11'30.266"N	104°45'20.469"W	1.45	
8083.00	90.180	1.730	7167.64	1000.89	654.38	1306.39	40°11'31.204"N	104°45'20.430"W	0.72	
8178.00	90.150	0.890	7167.36	1092.51	749.36	1308.56	40°11'32.143"N	104°45'20.402"W	0.88	
8273.00	90.860	1.100	7166.52	1183.99	844.34	1310.21	40°11'33.081"N	104°45'20.381"W	0.78	
8368.00	90.400	0.430	7165.48	1275.37	939.32	1311.48	40°11'34.020"N	104°45'20.364"W	0.86	
8463.00	88.390	359.860	7166.48	1366.45	1034.31	1311.72	40°11'34.959"N	104°45'20.361"W	2.20	
8557.00	88.520	359.130	7169.02	1456.25	1128.27	1310.89	40°11'35.887"N	104°45'20.372"W	0.79	
8652.00	88.520	358.870	7171.47	1546.76	1223.23	1309.23	40°11'36.826"N	104°45'20.393"W	0.27	
8748.00	89.380	358.580	7173.23	1638.09	1319.19	1307.10	40°11'37.774"N	104°45'20.421"W	0.95	
8842.00	90.000	358.100	7173.74	1727.34	1413.15	1304.37	40°11'38.702"N	104°45'20.456"W	0.83	
8937.00	89.870	357.870	7173.85	1817.35	1508.09	1301.03	40°11'39.641"N	104°45'20.499"W	0.28	
9032.00	89.840	358.900	7174.09	1907.58	1603.05	1298.35	40°11'40.579"N	104°45'20.533"W	1.08	
9127.00	90.210	358.230	7174.05	1997.89	1698.02	1295.98	40°11'41.517"N	104°45'20.564"W	0.81	
9222.00	91.070	358.810	7172.98	2088.18	1792.98	1293.52	40°11'42.456"N	104°45'20.595"W	1.09	
9317.00	91.450	0.200	7170.90	2178.94	1887.95	1292.70	40°11'43.394"N	104°45'20.606"W	1.52	
9412.00	89.780	359.170	7169.88	2269.81	1982.94	1292.18	40°11'44.333"N	104°45'20.612"W	2.07	
9507.00	89.750	358.970	7170.27	2360.38	2077.92	1290.64	40°11'45.272"N	104°45'20.632"W	0.21	
9601.00	90.030	359.810	7170.45	2450.16	2171.92	1289.64	40°11'46.201"N	104°45'20.645"W	0.94	
9696.00	89.010	1.410	7171.24	2541.46	2266.90	1290.65	40°11'47.139"N	104°45'20.632"W	2.00	
9791.00	88.150	2.150	7173.60	2633.26	2361.83	1293.60	40°11'48.077"N	104°45'20.594"W	1.19	
9886.00	88.210	1.630	7176.61	2725.08	2456.73	1296.73	40°11'49.015"N	104°45'20.553"W	0.55	
9981.00	89.380	1.220	7178.61	2816.74	2551.68	1299.09	40°11'49.953"N	104°45'20.523"W	1.30	
10076.00	90.120	1.300	7179.03	2908.34	2646.65	1301.18	40°11'50.892"N	104°45'20.496"W	0.78	
10171.00	88.730	1.850	7179.98	3000.07	2741.61	1303.79	40°11'51.830"N	104°45'20.462"W	1.57	
10266.00	88.140	1.220	7182.57	3091.75	2836.54	1306.33	40°11'52.768"N	104°45'20.429"W	0.91	
10360.00	87.100	1.250	7186.48	3182.30	2930.43	1308.36	40°11'53.696"N	104°45'20.403"W	1.11	
10455.00	87.380	1.890	7191.05	3273.93	3025.29	1310.96	40°11'54.634"N	104°45'20.370"W	0.73	



Actual Wellpath Report

BARCLAY 1N-27HZ AWP

Page 5 of 7



REFERENCE WELLPATH IDENTIFICATION

Operator	KERR-MCGEE OIL & GAS ONSHORE LP	Slot	SLOT#06 BARCLAY 1N-27HZ (476'FSL & 1839'FEL,SEC.27)
Area	COLORADO	Well	BARCLAY 1N-27HZ
Field	WELD COUNTY (KERR MCGEE)	Wellbore	BARCLAY 1N-27HZ AWB
Facility	SEC.27-T3N-R66W		

WELLPATH DATA (150 stations)

MD [ft]	Inclination [°]	Azimuth [°]	TVD [ft]	Vert Sect [ft]	North [ft]	East [ft]	Latitude	Longitude	DLS [°/100ft]	Comments
10550.00	89.750	2.180	7193.43	3365.83	3120.19	1314.33	40°11'55.571"N	104°45'20.326"W	2.51	
10645.00	90.920	1.690	7192.87	3457.72	3215.13	1317.54	40°11'56.510"N	104°45'20.285"W	1.34	
10740.00	90.240	0.310	7191.91	3549.20	3310.11	1319.20	40°11'57.448"N	104°45'20.263"W	1.62	
10835.00	91.230	0.890	7190.69	3640.50	3405.10	1320.19	40°11'58.387"N	104°45'20.250"W	1.21	
10930.00	93.140	0.700	7187.07	3731.82	3500.01	1321.51	40°11'59.325"N	104°45'20.233"W	2.02	
11025.00	93.690	359.820	7181.41	3822.81	3594.84	1321.94	40°12'00.262"N	104°45'20.228"W	1.09	
11120.00	94.220	359.150	7174.86	3913.37	3689.61	1321.09	40°12'01.198"N	104°45'20.239"W	0.90	
11215.00	92.430	359.750	7169.35	4003.97	3784.44	1320.18	40°12'02.135"N	104°45'20.250"W	1.99	
11309.00	90.460	359.710	7166.98	4093.88	3878.41	1319.73	40°12'03.064"N	104°45'20.256"W	2.10	
11404.00	91.230	359.400	7165.58	4184.68	3973.39	1319.00	40°12'04.003"N	104°45'20.265"W	0.87	
11499.00	91.390	358.780	7163.41	4275.24	4068.36	1317.49	40°12'04.941"N	104°45'20.285"W	0.67	
11594.00	91.530	357.850	7160.99	4365.40	4163.28	1314.70	40°12'05.879"N	104°45'20.321"W	0.99	
11689.00	91.320	357.770	7158.62	4455.29	4258.18	1311.07	40°12'06.817"N	104°45'20.367"W	0.24	
11703.00	91.380	357.470	7158.29	4468.52	4272.17	1310.49	40°12'06.955"N	104°45'20.375"W	2.18	Last BHI MWD Survey
11769.00	91.380	357.470	7156.71	4530.85	4338.08	1307.57	40°12'07.607"N	104°45'20.412"W	0.00	Projection to Bit

HOLE & CASING SECTIONS - Ref Wellbore: BARCLAY 1N-27HZ AWB Ref Wellpath: BARCLAY 1N-27HZ AWP

String/Diameter	Start MD [ft]	End MD [ft]	Interval [ft]	Start TVD [ft]	End TVD [ft]	Start N/S [ft]	Start E/W [ft]	End N/S [ft]	End E/W [ft]
13.5in Open Hole	13.00	890.00	877.00	13.00	889.98	0.00	0.00	-2.47	1.52
9.625in Casing Surface	13.00	890.00	877.00	13.00	889.98	0.00	0.00	-2.47	1.52
8.75in Open Hole	890.00	7703.00	6813.00	889.98	7169.69	-2.47	1.52	275.05	1285.91
7in Casing Intermediate	13.00	7697.00	7684.00	13.00	7169.61	0.00	0.00	269.07	1285.39
6.125in Open Hole	7697.00	11769.00	4072.00	7169.61	7156.71	269.07	1285.39	4338.08	1307.57



Actual Wellpath Report

BARCLAY 1N-27HZ AWP

Page 6 of 7



REFERENCE WELLPATH IDENTIFICATION

Operator	KERR-MCGEE OIL & GAS ONSHORE LP	Slot	SLOT#06 BARCLAY 1N-27HZ (476'FSL & 1839'FEL,SEC.27)
Area	COLORADO	Well	BARCLAY 1N-27HZ
Field	WELD COUNTY (KERR MCGEE)	Wellbore	BARCLAY 1N-27HZ AWB
Facility	SEC.27-T3N-R66W		

TARGETS

Name	MD [ft]	TVD [ft]	North [ft]	East [ft]	Grid East [US ft]	Grid North [US ft]	Latitude	Longitude	Shape
BARCLAY 15-27 PAD SECTION LINES		0.00	0.73	-64.23	3206570.73	1312996.29	40°11'24.745"N	104°45'38.092"W	polygon
BARCLAY 1N-27HZ BHL (460'FNL & 532'FEL,REV-2)		7157.00	4363.63	1303.36	3207901.82	1317370.25	40°12'07.859"N	104°45'20.467"W	point
BARCLAY 1N-27HZ BHL ON PLAT (460'FNL & 547'FEL,REV-1)		7157.00	4363.63	1288.36	3207886.82	1317370.13	40°12'07.859"N	104°45'20.660"W	point
BARCLAY 15-27 PAD HARDLINES (460' SETBACKS)		7417.00	0.73	-64.23	3206570.73	1312996.29	40°11'24.745"N	104°45'38.092"W	polygon

WELLPATH COMPOSITION - Ref Wellbore: BARCLAY 1N-27HZ AWB Ref Wellpath: BARCLAY 1N-27HZ AWP

Start MD [ft]	End MD [ft]	Positional Uncertainty Model	Log Name/Comment	Wellbore
13.00	837.00	NaviTrak (Standard)	BHI MWD SURVEYS 13 1/2" HOLE <234-837>	BARCLAY 1N-27HZ AWB
837.00	7634.00	NaviTrak (Standard)	BHI MWD SURVEYS 8 3/4" HOLE <974-7634>	BARCLAY 1N-27HZ AWB
7634.00	11703.00	NaviTrak (Standard)	BHI MWD SURVEYS 6 1/8" HOLE <7735-11703>	BARCLAY 1N-27HZ AWB
11703.00	11769.00	Blind Drilling (std)	Projection to bit	BARCLAY 1N-27HZ AWB



Actual Wellpath Report

BARCLAY 1N-27HZ AWP

Page 7 of 7



REFERENCE WELLPATH IDENTIFICATION			
Operator	KERR-MCGEE OIL & GAS ONSHORE LP	Slot	SLOT#06 BARCLAY 1N-27HZ (476'FSL & 1839'FEL,SEC.27)
Area	COLORADO	Well	BARCLAY 1N-27HZ
Field	WELD COUNTY (KERR MCGEE)	Wellbore	BARCLAY 1N-27HZ AWB
Facility	SEC.27-T3N-R66W		

WELLPATH COMMENTS				
MD [ft]	Inclination [°]	Azimuth [°]	TVD [ft]	Comment
13.00	0.000	156.860	13.00	Tie-On
234.00	0.560	156.860	234.00	Begin BHI MWD Surveys
7697.00	89.178	4.921	7169.61	7" Casing Point
11703.00	91.380	357.470	7158.29	Last BHI MWD Survey
11769.00	91.380	357.470	7156.71	Projection to Bit