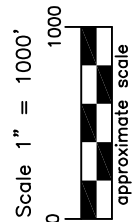
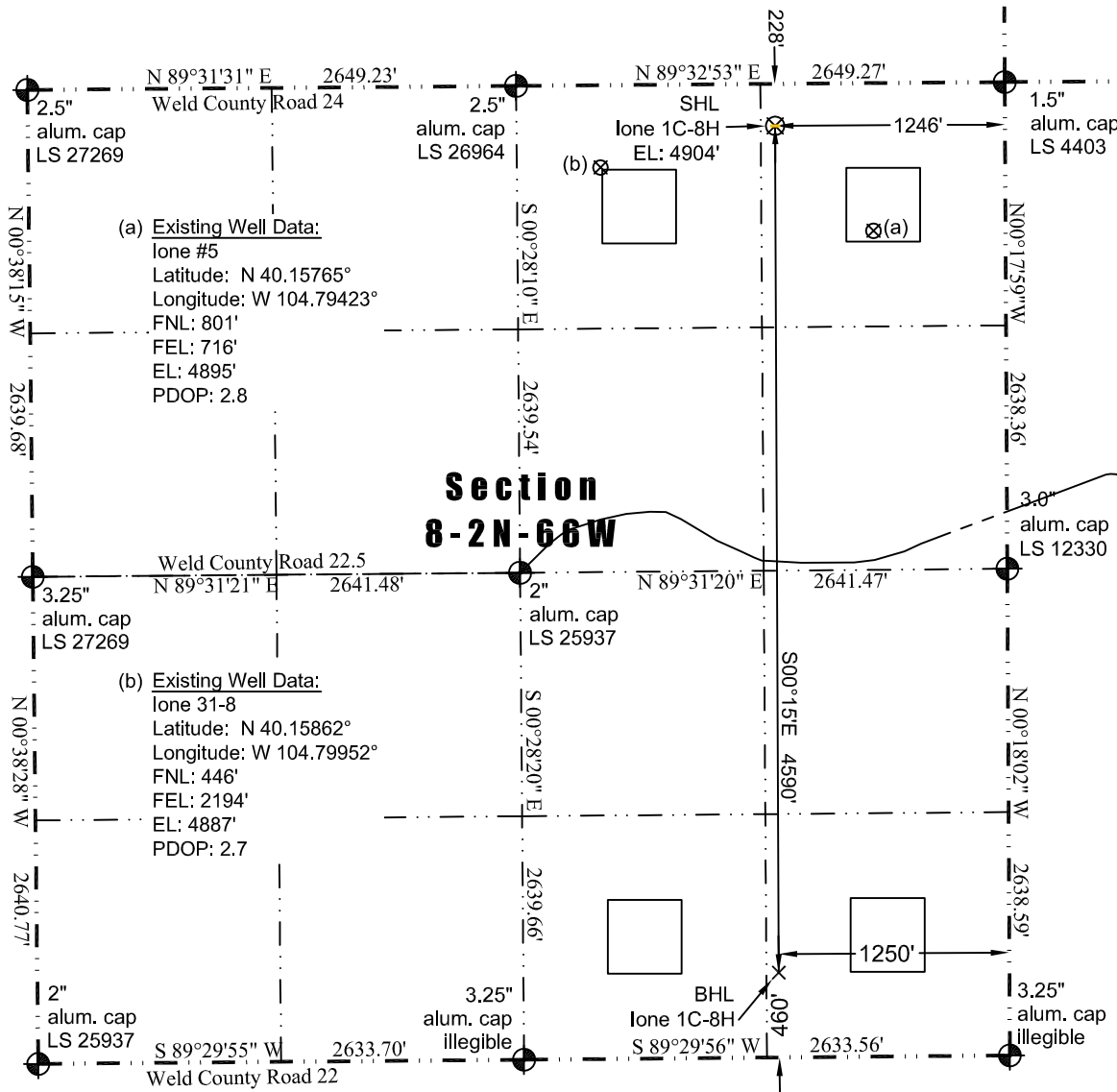


JR Land Surveying, LLC

8114 Northstar Drive
Windsor, Colorado 80528
P. 970-576-4641

WELL LOCATION CERTIFICATE

THIS MAP DOES NOT REPRESENT A BOUNDARY SURVEY



LEGEND
 — found survey monument
 — calculated dimension
 (c)

In accordance with a request from Jay Knutson of EnCana Oil & Gas (USA) Inc., JR Land Surveying, LLC has determined the location of the **lone 1C-8H** well site to be SHL: 228' FNL and 1246' FEL, (BHL 460' FSL and 1250' FEL), as measured at ninety (90) degrees from the section lines of Section 8, Township 2 North, Range 66 West of the 6th Principal Meridian, Weld County Colorado.

Proposed Surface Hole Data:

Latitude: N 40.15922° (BHL 40.14662°)
 Longitude: W 104.79612° (BHL 104.79618°)
 PDOP: 1.9

Nearest:

Building: 3,152' northeast
 Public Road: 1,955' northwest
 Property Line: 228' north
 Existing Well: Lone #5, 780' southeast

Above Ground Utility: 1,413' west
 Railroad: 4,657' southwest
 Well Window: SHL is 448' outside

Notes:

- 1) Bearings and distances based on NAD 83 Colorado North State Plane Coordinates using RTK GPS observations taken 5/16/12 by operator J.R. McGehee.
- 2) Conversion factor to ground (1.000275398).
- 3) Elevations based on NAVD 88 GPS heights and Geoid 2003 corrections.
- 4) See Location Drawing for visible improvements within 400 feet of pad site.
- 5) The surface use is agricultural field.

NOTICE: According to Colorado law you must commence any legal action based upon any defect in this W.L.C. within three years after you first discover such defect. In no event may any action based upon any defect in this W.L.C. be commenced more than ten years from this said date of the certification shown hereon.

I hereby certify that this Well Location Certificate was prepared by me or under my direct supervision on 5/17/2012 for and on behalf of EnCana Oil & Gas (USA) Inc. That it is not a Land Survey Plat or an Improvement Survey Plat and that it is not to be relied upon for establishment of fences, buildings, or other future improvement lines.

John Robert McGehee LS#38219
 Well: Lone 1C-8H WLC