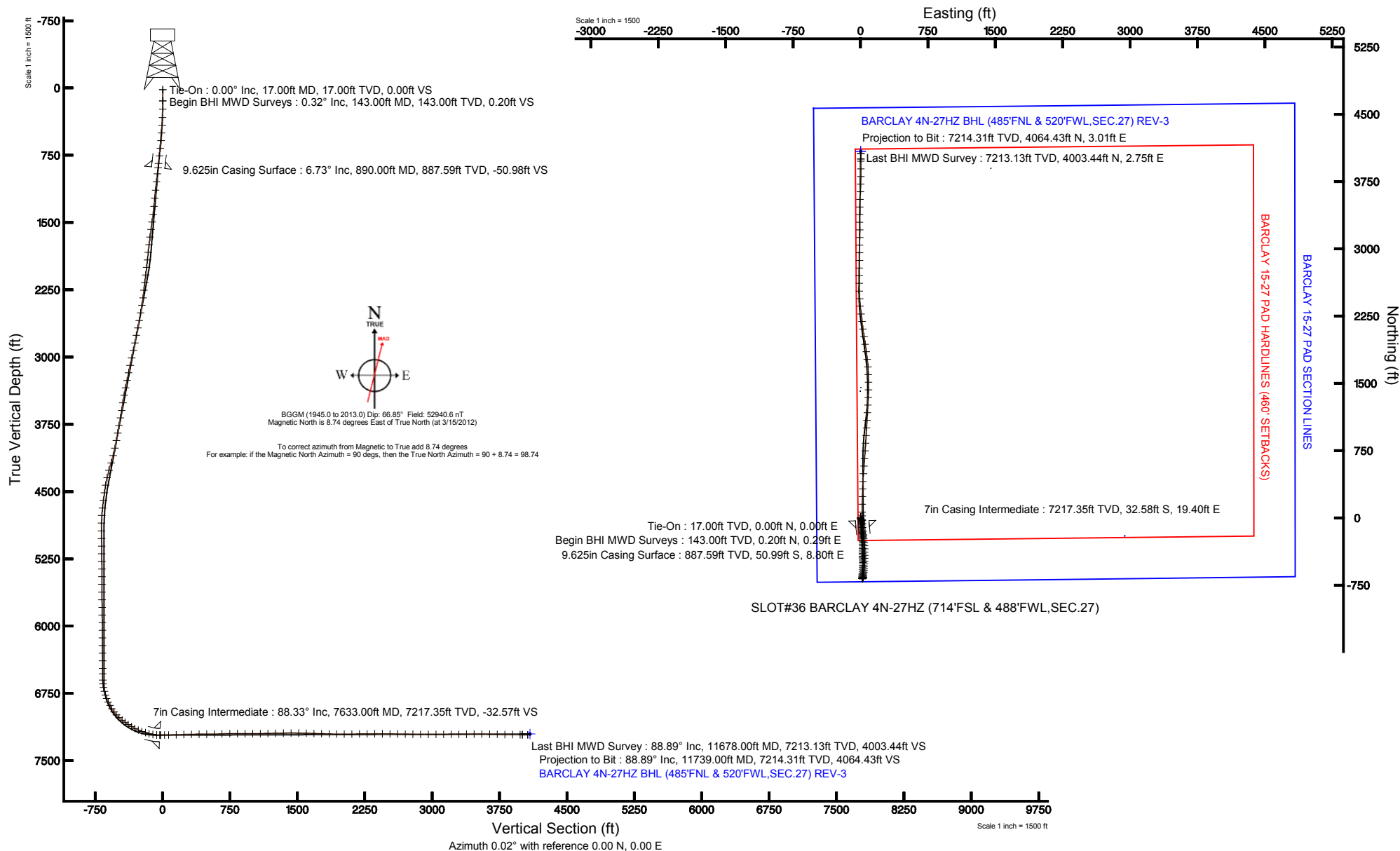


# KERR-MCGEE OIL & GAS ONSHORE LP

Location: COLORADO Slot: SLOT#36 BARCLAY 4N-27HZ (714'FSL & 488'FWL,SEC.27)  
 Field: WELD COUNTY (KERR MCGEE) Well: BARCLAY 4N-27HZ  
 Facility: SEC.27-T3N-R66W Wellbore: BARCLAY 4N-27HZ PWB

Plot reference wellpath is BARCLAY 4N-27HZ (REV B.0) PWP	
True vertical depths are referenced to XTREME 8 (RKB)	Grid System: NAD83 / Lambert Colorado SP, Northern Zone (501), US feet
Measured depths are referenced to XTREME 8 (RKB)	North Reference: True north
XTREME 8 (RKB) to Mean Sea Level: 4981 feet	Scale: True distance
Mean Sea Level to Mud line (At Slot: SLOT#36 BARCLAY 4N-27HZ (714'FSL & 488'FWL,SEC.27)): 0 feet	Depths are in feet
Coordinates are in feet referenced to Slot	Created by: wilsje02 on 4/30/2012





# Actual Wellpath Report

BARCLAY 4N-27HZ AWP

Page 1 of 7



## REFERENCE WELLPATH IDENTIFICATION

Operator	KERR-MCGEE OIL & GAS ONSHORE LP	Slot	SLOT#36 BARCLAY 4N-27HZ (714'FSL & 488'FWL,SEC.27)
Area	COLORADO	Well	BARCLAY 4N-27HZ
Field	WELD COUNTY (KERR MCGEE)	Wellbore	BARCLAY 4N-27HZ AWB
Facility	SEC.27-T3N-R66W		

## REPORT SETUP INFORMATION

Projection System	NAD83 / Lambert Colorado SP, Northern Zone (501), US feet	Software System	WellArchitect® 3.0.2
North Reference	True	User	Wilsjef02
Scale	0.999957	Report Generated	4/30/2012 at 10:06:05
Convergence at slot	0.47° East	Database/Source file	WellArchitectDB\BARCLAY_4N-27HZ_AWB.xml

## WELLPATH LOCATION

	Local coordinates		Grid coordinates		Geographic coordinates	
	North[ft]	East[ft]	Easting[US ft]	Northing[US ft]	Latitude	Longitude
Slot Location	-4144.31	-143.34	3203632.39	1313174.84	40°11'26.750"N	104°46'15.935"W
Facility Reference Pt			3203741.63	1317320.00	40°12'07.704"N	104°46'14.088"W
Field Reference Pt			3197771.84	1268891.29	40°04'09.600"N	104°47'36.000"W

## WELLPATH DATUM

Calculation method	Minimum curvature	XTREME 8 (RKB) to Facility Vertical Datum	4981.00ft
Horizontal Reference Pt	Slot	XTREME 8 (RKB) to Mean Sea Level	4981.00ft
Vertical Reference Pt	XTREME 8 (RKB)	XTREME 8 (RKB) to Mud Line at Slot (SLOT#36 BARCLAY 4N-27HZ (714'FSL & 488'FWL,SEC.27))	4981.00ft
MD Reference Pt	XTREME 8 (RKB)	Section Origin	N 0.00, E 0.00 ft
Field Vertical Reference	Mean Sea Level	Section Azimuth	0.02°



# Actual Wellpath Report

BARCLAY 4N-27HZ AWP

Page 2 of 7



## REFERENCE WELLPATH IDENTIFICATION

Operator	KERR-MCGEE OIL & GAS ONSHORE LP	Slot	SLOT#36 BARCLAY 4N-27HZ (714'FSL & 488'FWL,SEC.27)
Area	COLORADO	Well	BARCLAY 4N-27HZ
Field	WELD COUNTY (KERR MCGEE)	Wellbore	BARCLAY 4N-27HZ AWB
Facility	SEC.27-T3N-R66W		

## WELLPATH DATA (153 stations) † = interpolated/extrapolated station

MD [ft]	Inclination [°]	Azimuth [°]	TVD [ft]	Vert Sect [ft]	North [ft]	East [ft]	Latitude	Longitude	DLS [°/100ft]	Comments
0.00†	0.000	55.590	0.00	0.00	0.00	0.00	40°11'26.750"N	104°46'15.935"W	0.00	
17.00	0.000	55.590	17.00	0.00	0.00	0.00	40°11'26.750"N	104°46'15.935"W	0.00	Tie-On
143.00	0.320	55.590	143.00	0.20	0.20	0.29	40°11'26.752"N	104°46'15.931"W	0.25	Begin BHI MWD Surveys
235.00	0.820	142.480	235.00	-0.18	-0.18	0.90	40°11'26.748"N	104°46'15.923"W	0.94	
328.00	1.810	160.380	327.97	-2.09	-2.09	1.80	40°11'26.729"N	104°46'15.912"W	1.14	
416.00	3.180	177.190	415.89	-5.84	-5.84	2.39	40°11'26.692"N	104°46'15.904"W	1.75	
501.00	4.140	168.600	500.71	-11.20	-11.20	3.11	40°11'26.639"N	104°46'15.895"W	1.30	
586.00	5.420	177.600	585.42	-18.22	-18.22	3.88	40°11'26.570"N	104°46'15.885"W	1.74	
672.00	6.000	171.860	670.99	-26.72	-26.73	4.69	40°11'26.486"N	104°46'15.875"W	0.95	
757.00	6.490	169.490	755.49	-35.84	-35.85	6.20	40°11'26.396"N	104°46'15.855"W	0.65	
842.00	6.690	170.960	839.92	-45.46	-45.46	7.85	40°11'26.301"N	104°46'15.834"W	0.31	
959.00	6.800	167.520	956.11	-58.95	-58.95	10.42	40°11'26.167"N	104°46'15.801"W	0.36	
1050.00	6.790	178.060	1046.48	-69.59	-69.59	11.76	40°11'26.062"N	104°46'15.783"W	1.37	
1141.00	6.120	183.540	1136.90	-79.80	-79.81	11.65	40°11'25.961"N	104°46'15.785"W	1.00	
1232.00	5.070	187.460	1227.47	-88.63	-88.64	10.83	40°11'25.874"N	104°46'15.796"W	1.23	
1323.00	5.770	170.080	1318.07	-97.13	-97.13	11.09	40°11'25.790"N	104°46'15.792"W	1.95	
1413.00	7.350	171.470	1407.47	-107.28	-107.28	12.73	40°11'25.690"N	104°46'15.771"W	1.76	
1499.00	7.620	172.040	1492.74	-118.36	-118.37	14.33	40°11'25.580"N	104°46'15.750"W	0.33	
1584.00	7.760	175.450	1576.98	-129.66	-129.67	15.57	40°11'25.469"N	104°46'15.734"W	0.56	
1669.00	7.290	175.560	1661.25	-140.76	-140.77	16.44	40°11'25.359"N	104°46'15.723"W	0.55	
1754.00	6.670	175.150	1745.61	-151.06	-151.06	17.27	40°11'25.257"N	104°46'15.712"W	0.73	
1840.00	6.240	175.070	1831.07	-160.69	-160.70	18.10	40°11'25.162"N	104°46'15.702"W	0.50	
1925.00	6.490	174.460	1915.55	-170.07	-170.08	18.96	40°11'25.069"N	104°46'15.691"W	0.30	
2010.00	6.350	162.210	2000.02	-179.33	-179.34	20.86	40°11'24.978"N	104°46'15.666"W	1.62	
2095.00	7.110	165.740	2084.43	-188.90	-188.91	23.59	40°11'24.883"N	104°46'15.631"W	1.02	
2180.00	6.950	171.230	2168.79	-199.08	-199.09	25.67	40°11'24.783"N	104°46'15.604"W	0.81	
2266.00	6.430	182.800	2254.21	-209.04	-209.04	26.23	40°11'24.684"N	104°46'15.597"W	1.68	
2351.00	7.550	186.280	2338.58	-219.34	-219.35	25.39	40°11'24.582"N	104°46'15.608"W	1.41	
2436.00	9.420	186.780	2422.64	-231.80	-231.81	23.95	40°11'24.459"N	104°46'15.626"W	2.20	
2521.00	10.070	181.720	2506.42	-246.14	-246.14	22.91	40°11'24.318"N	104°46'15.640"W	1.26	
2607.00	10.660	175.120	2591.02	-261.58	-261.59	23.36	40°11'24.165"N	104°46'15.634"W	1.54	
2692.00	11.130	179.900	2674.49	-277.61	-277.62	24.04	40°11'24.007"N	104°46'15.625"W	1.20	
2777.00	10.520	182.170	2757.97	-293.57	-293.58	23.76	40°11'23.849"N	104°46'15.629"W	0.88	
2863.00	11.450	180.190	2842.40	-309.96	-309.96	23.44	40°11'23.687"N	104°46'15.633"W	1.17	
2948.00	12.110	180.180	2925.61	-327.31	-327.32	23.38	40°11'23.515"N	104°46'15.634"W	0.78	
3033.00	12.160	183.940	3008.71	-345.16	-345.16	22.74	40°11'23.339"N	104°46'15.642"W	0.93	
3118.00	11.930	179.410	3091.84	-362.87	-362.88	22.21	40°11'23.164"N	104°46'15.649"W	1.14	
3204.00	11.130	178.570	3176.10	-380.06	-380.07	22.51	40°11'22.994"N	104°46'15.645"W	0.95	
3289.00	11.330	181.560	3259.48	-396.61	-396.61	22.49	40°11'22.831"N	104°46'15.645"W	0.72	
3374.00	11.620	181.050	3342.78	-413.51	-413.52	22.11	40°11'22.664"N	104°46'15.650"W	0.36	
3459.00	9.720	176.890	3426.31	-429.24	-429.25	22.34	40°11'22.508"N	104°46'15.647"W	2.41	
3545.00	8.730	178.320	3511.19	-443.01	-443.02	22.92	40°11'22.372"N	104°46'15.640"W	1.18	
3630.00	9.570	176.620	3595.11	-456.51	-456.52	23.53	40°11'22.239"N	104°46'15.632"W	1.04	
3715.00	10.740	175.980	3678.78	-471.47	-471.47	24.50	40°11'22.091"N	104°46'15.619"W	1.38	
3801.00	9.500	174.970	3763.44	-486.53	-486.54	25.69	40°11'21.942"N	104°46'15.604"W	1.46	



# Actual Wellpath Report

BARCLAY 4N-27HZ AWP

Page 3 of 7



## REFERENCE WELLPATH IDENTIFICATION

Operator	KERR-MCGEE OIL & GAS ONSHORE LP	Slot	SLOT#36 BARCLAY 4N-27HZ (714'FSL & 488'FWL,SEC.27)
Area	COLORADO	Well	BARCLAY 4N-27HZ
Field	WELD COUNTY (KERR MCGEE)	Wellbore	BARCLAY 4N-27HZ AWB
Facility	SEC.27-T3N-R66W		

## WELLPATH DATA (153 stations)

MD [ft]	Inclination [°]	Azimuth [°]	TVD [ft]	Vert Sect [ft]	North [ft]	East [ft]	Latitude	Longitude	DLS [°/100ft]	Comments
3886.00	9.320	176.610	3847.29	-500.39	-500.40	26.71	40°11'21.805"N	104°46'15.591"W	0.38	
3971.00	11.030	184.220	3930.96	-515.37	-515.38	26.52	40°11'21.657"N	104°46'15.593"W	2.55	
4057.00	12.330	185.350	4015.18	-532.72	-532.73	25.05	40°11'21.486"N	104°46'15.612"W	1.53	
4142.00	14.560	184.980	4097.84	-552.40	-552.41	23.28	40°11'21.291"N	104°46'15.635"W	2.63	
4227.00	15.850	182.170	4179.86	-574.65	-574.65	21.91	40°11'21.071"N	104°46'15.653"W	1.75	
4313.00	15.550	181.810	4262.66	-597.90	-597.91	21.10	40°11'20.841"N	104°46'15.663"W	0.37	
4398.00	12.840	184.800	4345.05	-618.71	-618.71	19.95	40°11'20.636"N	104°46'15.678"W	3.30	
4483.00	9.810	183.700	4428.39	-635.35	-635.36	18.70	40°11'20.471"N	104°46'15.694"W	3.57	
4569.00	7.860	182.550	4513.36	-648.54	-648.54	17.96	40°11'20.341"N	104°46'15.704"W	2.28	
4654.00	7.410	179.270	4597.61	-659.82	-659.83	17.77	40°11'20.230"N	104°46'15.706"W	0.74	
4740.00	6.170	173.150	4683.01	-669.96	-669.96	18.39	40°11'20.129"N	104°46'15.698"W	1.67	
4825.00	4.030	159.600	4767.67	-677.29	-677.30	19.98	40°11'20.057"N	104°46'15.678"W	2.87	
4910.00	0.940	151.830	4852.58	-680.71	-680.71	21.35	40°11'20.023"N	104°46'15.660"W	3.65	
4996.00	0.390	0.900	4938.58	-681.04	-681.04	21.69	40°11'20.020"N	104°46'15.656"W	1.51	
5081.00	0.510	354.450	5023.57	-680.37	-680.38	21.66	40°11'20.027"N	104°46'15.656"W	0.15	
5166.00	0.500	332.260	5108.57	-679.67	-679.67	21.45	40°11'20.033"N	104°46'15.659"W	0.23	
5252.00	0.940	329.150	5194.56	-678.73	-678.74	20.91	40°11'20.043"N	104°46'15.666"W	0.51	
5337.00	0.880	322.000	5279.55	-677.62	-677.62	20.15	40°11'20.054"N	104°46'15.675"W	0.15	
5422.00	0.670	298.760	5364.54	-676.86	-676.87	19.31	40°11'20.061"N	104°46'15.686"W	0.44	
5508.00	0.770	283.580	5450.54	-676.49	-676.49	18.31	40°11'20.065"N	104°46'15.699"W	0.25	
5593.00	0.550	281.490	5535.53	-676.27	-676.28	17.36	40°11'20.067"N	104°46'15.711"W	0.26	
5679.00	0.610	287.820	5621.53	-676.05	-676.05	16.52	40°11'20.069"N	104°46'15.722"W	0.10	
5764.00	0.860	30.280	5706.52	-675.36	-675.36	16.41	40°11'20.076"N	104°46'15.724"W	1.36	
5849.00	1.310	49.870	5791.51	-674.18	-674.19	17.47	40°11'20.088"N	104°46'15.710"W	0.68	
5935.00	1.110	43.640	5877.49	-672.94	-672.95	18.80	40°11'20.100"N	104°46'15.693"W	0.28	
6020.00	1.110	57.720	5962.47	-671.91	-671.92	20.06	40°11'20.110"N	104°46'15.676"W	0.32	
6105.00	1.440	82.720	6047.45	-671.33	-671.34	21.82	40°11'20.116"N	104°46'15.654"W	0.75	
6191.00	1.140	87.560	6133.43	-671.16	-671.17	23.75	40°11'20.118"N	104°46'15.629"W	0.37	
6276.00	0.950	77.100	6218.42	-670.97	-670.97	25.28	40°11'20.119"N	104°46'15.609"W	0.32	
6361.00	0.810	64.770	6303.41	-670.55	-670.56	26.51	40°11'20.124"N	104°46'15.593"W	0.28	
6447.00	0.850	57.440	6389.40	-669.95	-669.96	27.59	40°11'20.129"N	104°46'15.579"W	0.13	
6532.00	0.720	51.920	6474.39	-669.28	-669.29	28.55	40°11'20.136"N	104°46'15.567"W	0.18	
6592.00	0.500	57.750	6534.39	-668.91	-668.92	29.06	40°11'20.140"N	104°46'15.560"W	0.38	
6660.00	1.590	24.490	6602.37	-667.89	-667.90	29.71	40°11'20.150"N	104°46'15.552"W	1.77	
6703.00	6.140	3.960	6645.27	-665.05	-665.06	30.11	40°11'20.178"N	104°46'15.547"W	10.89	
6745.00	10.510	1.730	6686.81	-658.98	-658.99	30.38	40°11'20.238"N	104°46'15.543"W	10.43	
6788.00	14.700	1.600	6728.77	-649.60	-649.61	30.65	40°11'20.331"N	104°46'15.540"W	9.74	
6831.00	18.350	4.800	6769.99	-637.40	-637.41	31.37	40°11'20.451"N	104°46'15.531"W	8.75	
6873.00	21.690	8.240	6809.44	-623.12	-623.13	33.04	40°11'20.592"N	104°46'15.509"W	8.43	
6916.00	25.140	7.670	6848.90	-606.20	-606.21	35.40	40°11'20.759"N	104°46'15.479"W	8.04	
6959.00	27.920	7.000	6887.37	-587.15	-587.17	37.84	40°11'20.948"N	104°46'15.447"W	6.50	
7001.00	32.440	5.690	6923.66	-566.17	-566.19	40.16	40°11'21.155"N	104°46'15.418"W	10.87	
7044.00	36.850	4.230	6959.03	-541.82	-541.84	42.26	40°11'21.396"N	104°46'15.391"W	10.44	
7086.00	41.870	3.850	6991.49	-515.26	-515.28	44.13	40°11'21.658"N	104°46'15.366"W	11.97	
7129.00	46.740	1.980	7022.26	-485.28	-485.29	45.63	40°11'21.954"N	104°46'15.347"W	11.72	



# Actual Wellpath Report

## BARCLAY 4N-27HZ AWP

Page 4 of 7



### REFERENCE WELLPATH IDENTIFICATION

Operator	KERR-MCGEE OIL & GAS ONSHORE LP	Slot	SLOT#36 BARCLAY 4N-27HZ (714'FSL & 488'FWL,SEC.27)
Area	COLORADO	Well	BARCLAY 4N-27HZ
Field	WELD COUNTY (KERR MCGEE)	Wellbore	BARCLAY 4N-27HZ AWB
Facility	SEC.27-T3N-R66W		

### WELLPATH DATA (153 stations) † = interpolated/extrapolated station

MD [ft]	Inclination [°]	Azimuth [°]	TVD [ft]	Vert Sect [ft]	North [ft]	East [ft]	Latitude	Longitude	DLS [°/100ft]	Comments
7172.00	51.930	0.870	7050.27	-452.68	-452.70	46.43	40°11'22.276"N	104°46'15.337"W	12.23	
7214.00	55.710	359.730	7075.06	-418.79	-418.80	46.60	40°11'22.611"N	104°46'15.335"W	9.26	
7257.00	56.110	359.160	7099.16	-383.18	-383.19	46.26	40°11'22.963"N	104°46'15.339"W	1.44	
7300.00	57.910	358.070	7122.57	-347.12	-347.14	45.38	40°11'23.320"N	104°46'15.350"W	4.69	
7342.00	62.900	356.040	7143.31	-310.67	-310.68	43.49	40°11'23.680"N	104°46'15.375"W	12.60	
7385.00	68.500	354.760	7161.00	-271.62	-271.64	40.34	40°11'24.066"N	104°46'15.415"W	13.30	
7428.00	70.120	354.750	7176.19	-231.57	-231.58	36.66	40°11'24.462"N	104°46'15.463"W	3.77	
7470.00	72.600	354.870	7189.61	-191.94	-191.95	33.06	40°11'24.853"N	104°46'15.509"W	5.91	
7513.00	75.320	354.090	7201.49	-150.81	-150.82	29.08	40°11'25.260"N	104°46'15.560"W	6.56	
7555.00	80.710	353.530	7210.21	-109.98	-109.99	24.65	40°11'25.663"N	104°46'15.617"W	12.90	
7598.00	85.370	356.530	7215.42	-67.48	-67.48	20.96	40°11'26.083"N	104°46'15.665"W	12.86	
7633.00†	88.329	358.334	7217.35	-32.57	-32.58	19.40	40°11'26.428"N	104°46'15.685"W	9.90	7" Casing Point
7644.00	89.260	358.900	7217.58	-21.57	-21.58	19.13	40°11'26.537"N	104°46'15.688"W	9.90	
7687.00	91.450	359.500	7217.31	21.42	21.41	18.53	40°11'26.962"N	104°46'15.696"W	5.28	
7730.00	92.000	0.160	7216.02	64.40	64.39	18.41	40°11'27.386"N	104°46'15.698"W	2.00	
7816.00	91.740	1.820	7213.21	150.34	150.33	19.89	40°11'28.236"N	104°46'15.679"W	1.95	
7901.00	91.750	1.420	7210.62	235.26	235.26	22.29	40°11'29.075"N	104°46'15.648"W	0.47	
7986.00	91.040	0.780	7208.55	320.22	320.21	23.92	40°11'29.914"N	104°46'15.627"W	1.12	
8071.00	90.270	3.460	7207.58	405.15	405.14	27.07	40°11'30.754"N	104°46'15.586"W	3.28	
8157.00	89.690	3.920	7207.61	490.97	490.96	32.60	40°11'31.602"N	104°46'15.515"W	0.86	
8242.00	91.660	4.180	7206.61	575.75	575.74	38.61	40°11'32.439"N	104°46'15.438"W	2.34	
8327.00	92.150	3.930	7203.78	660.50	660.48	44.61	40°11'33.277"N	104°46'15.360"W	0.65	
8413.00	91.070	4.390	7201.37	746.24	746.22	50.85	40°11'34.124"N	104°46'15.280"W	1.36	
8498.00	90.120	4.110	7200.49	831.00	830.98	57.15	40°11'34.962"N	104°46'15.199"W	1.17	
8584.00	89.410	2.840	7200.84	916.84	916.82	62.36	40°11'35.810"N	104°46'15.131"W	1.69	
8669.00	89.750	3.090	7201.46	1001.72	1001.70	66.76	40°11'36.649"N	104°46'15.075"W	0.50	
8754.00	90.890	3.430	7200.99	1086.59	1086.56	71.59	40°11'37.487"N	104°46'15.012"W	1.40	
8840.00	91.230	3.510	7199.40	1172.41	1172.39	76.79	40°11'38.336"N	104°46'14.945"W	0.41	
8925.00	91.490	3.320	7197.38	1257.24	1257.21	81.86	40°11'39.174"N	104°46'14.880"W	0.38	
9011.00	90.950	2.510	7195.55	1343.11	1343.08	86.23	40°11'40.022"N	104°46'14.824"W	1.13	
9096.00	89.900	0.770	7194.92	1428.07	1428.04	88.66	40°11'40.862"N	104°46'14.792"W	2.39	
9181.00	89.130	359.290	7195.64	1513.06	1513.03	88.71	40°11'41.702"N	104°46'14.792"W	1.96	
9266.00	88.520	358.300	7197.38	1598.03	1598.00	86.92	40°11'42.541"N	104°46'14.815"W	1.37	
9352.00	88.250	356.140	7199.80	1683.88	1683.86	82.75	40°11'43.390"N	104°46'14.869"W	2.53	
9437.00	88.580	353.240	7202.16	1768.47	1768.45	74.89	40°11'44.226"N	104°46'14.970"W	3.43	
9522.00	88.210	352.500	7204.54	1852.78	1852.76	64.34	40°11'45.059"N	104°46'15.106"W	0.97	
9607.00	89.130	351.350	7206.51	1936.91	1936.89	52.40	40°11'45.890"N	104°46'15.260"W	1.73	
9693.00	90.060	350.800	7207.12	2021.86	2021.85	39.06	40°11'46.730"N	104°46'15.432"W	1.26	
9778.00	91.040	353.220	7206.30	2106.02	2106.01	27.25	40°11'47.562"N	104°46'15.584"W	3.07	
9863.00	90.760	353.010	7204.97	2190.39	2190.39	17.06	40°11'48.395"N	104°46'15.715"W	0.41	
9948.00	90.830	352.740	7203.79	2274.72	2274.72	6.52	40°11'49.229"N	104°46'15.851"W	0.33	
10034.00	90.330	354.790	7202.92	2360.20	2360.20	-2.82	40°11'50.074"N	104°46'15.971"W	2.45	
10119.00	89.380	356.650	7203.13	2444.96	2444.96	-9.16	40°11'50.911"N	104°46'16.053"W	2.46	
10204.00	89.100	358.270	7204.26	2529.86	2529.87	-12.93	40°11'51.750"N	104°46'16.102"W	1.93	
10290.00	89.230	359.900	7205.51	2615.84	2615.84	-14.30	40°11'52.600"N	104°46'16.119"W	1.90	



# Actual Wellpath Report

BARCLAY 4N-27HZ AWP

Page 5 of 7



## REFERENCE WELLPATH IDENTIFICATION

Operator	KERR-MCGEE OIL & GAS ONSHORE LP	Slot	SLOT#36 BARCLAY 4N-27HZ (714'FSL & 488'FWL,SEC.27)
Area	COLORADO	Well	BARCLAY 4N-27HZ
Field	WELD COUNTY (KERR MCGEE)	Wellbore	BARCLAY 4N-27HZ AWB
Facility	SEC.27-T3N-R66W		

## WELLPATH DATA (153 stations)

MD [ft]	Inclination [°]	Azimuth [°]	TVD [ft]	Vert Sect [ft]	North [ft]	East [ft]	Latitude	Longitude	DLS [°/100ft]	Comments
10375.00	88.950	359.940	7206.86	2700.83	2700.83	-14.42	40°11'53.440"N	104°46'16.121"W	0.33	
10460.00	89.350	0.940	7208.12	2785.82	2785.82	-13.77	40°11'54.279"N	104°46'16.112"W	1.27	
10545.00	89.470	1.090	7209.00	2870.80	2870.80	-12.26	40°11'55.119"N	104°46'16.093"W	0.23	
10631.00	89.630	0.710	7209.67	2956.79	2956.79	-10.91	40°11'55.969"N	104°46'16.076"W	0.48	
10716.00	90.330	0.400	7209.70	3041.78	3041.78	-10.09	40°11'56.809"N	104°46'16.065"W	0.90	
10801.00	90.210	0.280	7209.30	3126.78	3126.78	-9.58	40°11'57.649"N	104°46'16.059"W	0.20	
10886.00	90.330	359.820	7208.90	3211.78	3211.78	-9.51	40°11'58.489"N	104°46'16.058"W	0.56	
10972.00	90.000	358.760	7208.65	3297.77	3297.77	-10.58	40°11'59.339"N	104°46'16.071"W	1.29	
11057.00	90.830	0.890	7208.04	3382.76	3382.76	-10.84	40°12'00.178"N	104°46'16.075"W	2.69	
11142.00	90.240	2.220	7207.24	3467.72	3467.73	-8.53	40°12'01.018"N	104°46'16.045"W	1.71	
11227.00	89.870	2.480	7207.16	3552.65	3552.66	-5.04	40°12'01.857"N	104°46'16.000"W	0.53	
11313.00	89.130	2.500	7207.91	3638.57	3638.57	-1.31	40°12'02.706"N	104°46'15.952"W	0.86	
11398.00	88.550	1.970	7209.63	3723.49	3723.49	2.01	40°12'03.545"N	104°46'15.909"W	0.92	
11483.00	89.810	359.930	7210.85	3808.46	3808.46	3.41	40°12'04.385"N	104°46'15.891"W	2.82	
11568.00	89.380	359.930	7211.45	3893.46	3893.46	3.31	40°12'05.225"N	104°46'15.892"W	0.51	
11653.00	88.980	359.410	7212.67	3978.45	3978.45	2.82	40°12'06.065"N	104°46'15.899"W	0.77	
11678.00	88.890	0.250	7213.13	4003.44	4003.44	2.75	40°12'06.312"N	104°46'15.900"W	3.38	Last BHI MWD Survey
11739.00	88.890	0.250	7214.31	4064.43	4064.43	3.01	40°12'06.915"N	104°46'15.896"W	0.00	Projection to Bit

## HOLE & CASING SECTIONS - Ref Wellbore: BARCLAY 4N-27HZ AWB Ref Wellpath: BARCLAY 4N-27HZ AWP

String/Diameter	Start MD [ft]	End MD [ft]	Interval [ft]	Start TVD [ft]	End TVD [ft]	Start N/S [ft]	Start E/W [ft]	End N/S [ft]	End E/W [ft]
13.5in Open Hole	17.00	890.00	873.00	17.00	887.59	0.00	0.00	-50.99	8.80
9.625in Casing Surface	17.00	890.00	873.00	17.00	887.59	0.00	0.00	-50.99	8.80
8.75in Open Hole	890.00	7653.00	6763.00	887.59	7217.66	-50.99	8.80	-12.58	18.97
7in Casing Intermediate	17.00	7633.00	7616.00	17.00	7217.35	0.00	0.00	-32.58	19.40
6.125in Open Hole	7633.00	11739.00	4106.00	7217.35	7214.31	-32.58	19.40	4064.43	3.01



# Actual Wellpath Report

BARCLAY 4N-27HZ AWP

Page 6 of 7



## REFERENCE WELLPATH IDENTIFICATION

Operator	KERR-MCGEE OIL & GAS ONSHORE LP	Slot	SLOT#36 BARCLAY 4N-27HZ (714'FSL & 488'FWL,SEC.27)
Area	COLORADO	Well	BARCLAY 4N-27HZ
Field	WELD COUNTY (KERR MCGEE)	Wellbore	BARCLAY 4N-27HZ AWB
Facility	SEC.27-T3N-R66W		

## TARGETS

Name	MD [ft]	TVD [ft]	North [ft]	East [ft]	Grid East [US ft]	Grid North [US ft]	Latitude	Longitude	Shape
BARCLAY 15-27 PAD SECTION LINES		12.00	-202.70	2936.91	3206570.73	1312996.29	40°11'24.745"N	104°45'38.092"W	polygon
BARCLAY 4N-27HZ BHL (485'FNL & 520'FWL,SEC.27) REV-2		7195.00	4089.05	1.40	3203600.18	1317263.58	40°12'07.158"N	104°46'15.917"W	point
BARCLAY 4N-27HZ BHL ON PLAT (460'FNL & 520'FWL,SEC.27) REV-1		7195.00	4114.05	1.40	3203599.97	1317288.58	<b>40°12'07.405"N</b>	<b>104°46'15.917"W</b>	point
BARCLAY 4N-27HZ BHL (485'FNL & 520'FWL,SEC.27) REV-3		7205.00	4089.05	1.40	3203600.18	1317263.58	40°12'07.158"N	104°46'15.917"W	point
BARCLAY 15-27 PAD HARDLINES (460' SETBACKS)		7429.00	-202.70	2936.91	3206570.73	1312996.29	40°11'24.745"N	104°45'38.092"W	polygon

## WELLPATH COMPOSITION - Ref Wellbore: BARCLAY 4N-27HZ AWB Ref Wellpath: BARCLAY 4N-27HZ AWP

Start MD [ft]	End MD [ft]	Positional Uncertainty Model	Log Name/Comment	Wellbore
17.00	842.00	NaviTrak (Standard)	BHI MWD SURVEYS 13 1/2" HOLE <143-842>	BARCLAY 4N-27HZ AWB
842.00	7598.00	NaviTrak (Standard)	BHI MWD SURVEYS 8 3/4" HOLE <959-7598>	BARCLAY 4N-27HZ AWB
7598.00	11678.00	OnTrak (Standard)	BHI MWD SURVEYS 6 1/8" HOLE <7644-11678>	BARCLAY 4N-27HZ AWB
11678.00	11739.00	Blind Drilling (std)	Projection to bit	BARCLAY 4N-27HZ AWB



# Actual Wellpath Report

BARCLAY 4N-27HZ AWP

Page 7 of 7



## REFERENCE WELLPATH IDENTIFICATION

Operator	KERR-MCGEE OIL & GAS ONSHORE LP	Slot	SLOT#36 BARCLAY 4N-27HZ (714'FSL & 488'FWL,SEC.27)
Area	COLORADO	Well	BARCLAY 4N-27HZ
Field	WELD COUNTY (KERR MCGEE)	Wellbore	BARCLAY 4N-27HZ AWB
Facility	SEC.27-T3N-R66W		

## WELLPATH COMMENTS

MD [ft]	Inclination [°]	Azimuth [°]	TVD [ft]	Comment
17.00	0.000	55.590	17.00	Tie-On
143.00	0.320	55.590	143.00	Begin BHI MWD Surveys
7633.00	88.329	358.334	7217.35	7" Casing Point
11678.00	88.890	0.250	7213.13	Last BHI MWD Survey
11739.00	88.890	0.250	7214.31	Projection to Bit