
OXY GRAND JUNCTION EBUSINESS

**Shell 797-03-13A
GRAND VALLEY
Garfield County , Colorado**

Cement Surface Casing
24-May-2012

Post Job Summary

The Road to Excellence Starts with Safety

Sold To #: 344034	Ship To #: 2929190	Quote #:	Sales Order #: 9537376
Customer: OXY GRAND JUNCTION EBUSINESS	Customer Rep: Clark, Darryl		
Well Name: Shell	Well #: 797-03-13A	API/UWI #: 05-045-21442	
Field: GRAND VALLEY	City (SAP): PARACHUTE	County/Parish: Garfield	State: Colorado
Lat: N 39.48 deg. OR N 39 deg. 28 min. 46.499 secs.	Long: W 108.202 deg. OR W -109 deg. 47 min. 52.39 secs.		
Contractor: H&P 330	Rig/Platform Name/Num: H&P 330		
Job Purpose: Cement Surface Casing			
Well Type: Development Well	Job Type: Cement Surface Casing		
Sales Person: HIMES, JEFFREY	Srvc Supervisor: CHASTAIN, DERICK	MBU ID Emp #: 455848	

Job Personnel

HES Emp Name	Exp Hrs	Emp #	HES Emp Name	Exp Hrs	Emp #	HES Emp Name	Exp Hrs	Emp #
BROWN, TRAVIS A	24	396848	CHASTAIN, DERICK Allan	29	455848	LINN, PAUL Andrew	24	479143

Equipment

HES Unit #	Distance-1 way	HES Unit #	Distance-1 way	HES Unit #	Distance-1 way	HES Unit #	Distance-1 way
10297346	60 mile	10951251	60 mile	11071559	60 mile	11542767	60 mile
11808835	60 mile						

Job Hours

Date	On Location Hours	Operating Hours	Date	On Location Hours	Operating Hours	Date	On Location Hours	Operating Hours
5/23/2011	3	0	5/24/2012	24	2	5/25/2012	2	1

TOTAL Total is the sum of each column separately

Job

Formation Name					Date				Time		Time Zone		
Formation Depth (MD)		Top		Bottom		Called Out							
Form Type				BHST		On Location							
Job depth MD		1060. ft		Job Depth TVD		1060. ft		Job Started		24 - May - 2012		23:30	
Water Depth				Wk Ht Above Floor		. ft		Job Completed		24 - May - 2012		01:03	
Perforation Depth (MD)		From		To		Departed Loc				25 - May - 2012		02:00	

Well Data

Description	New / Used	Max pressure psig	Size in	ID in	Weight lbm/ft	Thread	Grade	Top MD ft	Bottom MD ft	Top TVD ft	Bottom TVD ft
OPEN HOLE				12.25				.	1060.	.	1060.
SURFACE CASING	Unknown		9.625	8.921	36.		J-55	.	1009.9	.	1009.9

Sales/Rental/3rd Party (HES)

Description	Qty	Qty uom	Depth	Supplier
PLUG,CMTG,TOP,9 5/8,HWE,8.16 MIN/9.06 MA	1	EA		
R/A DENSOMETER W/CHART RECORDER,/JOB,ZI	1	JOB		
PORT. DATA ACQUIS. W/OPTICEM RT W/HES	1	EA		
ADC (AUTO DENSITY CTRL) SYS, /JOB,ZI	1	JOB		

Tools and Accessories

Type	Size	Qty	Make	Depth	Type	Size	Qty	Make	Depth	Type	Size	Qty	Make
Guide Shoe					Packer					Top Plug	9 5/8	1	HES
Float Shoe					Bridge Plug					Bottom Plug			
Float Collar					Retainer					SSR plug set			
Insert Float										Plug Container	9 5/8	1	HES
Stage Tool										Centralizers			

Miscellaneous Materials

Gelling Agt	Conc	Surfactant	Conc	Acid Type	Qty	Conc	%
Treatment Fld	Conc	Inhibitor	Conc	Sand Type	Size	Qty	

Fluid Data

Stage/Plug #: 1

Fluid #	Stage Type	Fluid Name	Qty	Qty uom	Mixing Density lbm/gal	Yield ft ³ /sk	Mix Fluid Gal/sk	Rate bbl/min	Total Mix Fluid Gal/sk
1	Fresh Water Spacer		10.00	bbl	8.33	.0	.0	4	
2	Gel Water Spacer		20.00	bbl	8.34	.0	.0	4	
0.25 gal/bbl		LGC-36 UC, BULK (101582749)							
3	Fresh Water Spacer		10.00	bbl	8.33	.0	.0	6	
4	VersaCem Lead Cement	VERSACEM (TM) SYSTEM (452010)	158.0	sacks	12.3	2.38	13.77	6	13.77
13.77 Gal		FRESH WATER							
5	SwiftCem Tail Cement	SWIFTCM (TM) SYSTEM (452990)	126.0	sacks	14.2	1.43	6.85	6	6.85
6.85 Gal		FRESH WATER							
6	Fresh Water Displacement		75.00	bbl	8.34	.0	.0	6	
Calculated Values		Pressures		Volumes					
Displacement	74.8	Shut In: Instant		Lost Returns	0	Cement Slurry	99.1	Pad	
Top Of Cement	SURFACE	5 Min		Cement Returns	39	Actual Displacement	74.8	Treatment	
Frac Gradient		15 Min		Spacers	40	Load and Breakdown		Total Job	220
Rates									
Circulating	6	Mixing	6	Displacement	6	Avg. Job	5		
Cement Left In Pipe	Amount	42.7 ft	Reason	Shoe Joint					
Frac Ring # 1 @	ID	Frac ring # 2 @	ID	Frac Ring # 3 @	ID	Frac Ring # 4 @	ID		
The Information Stated Herein Is Correct				Customer Representative Signature					

The Road to Excellence Starts with Safety

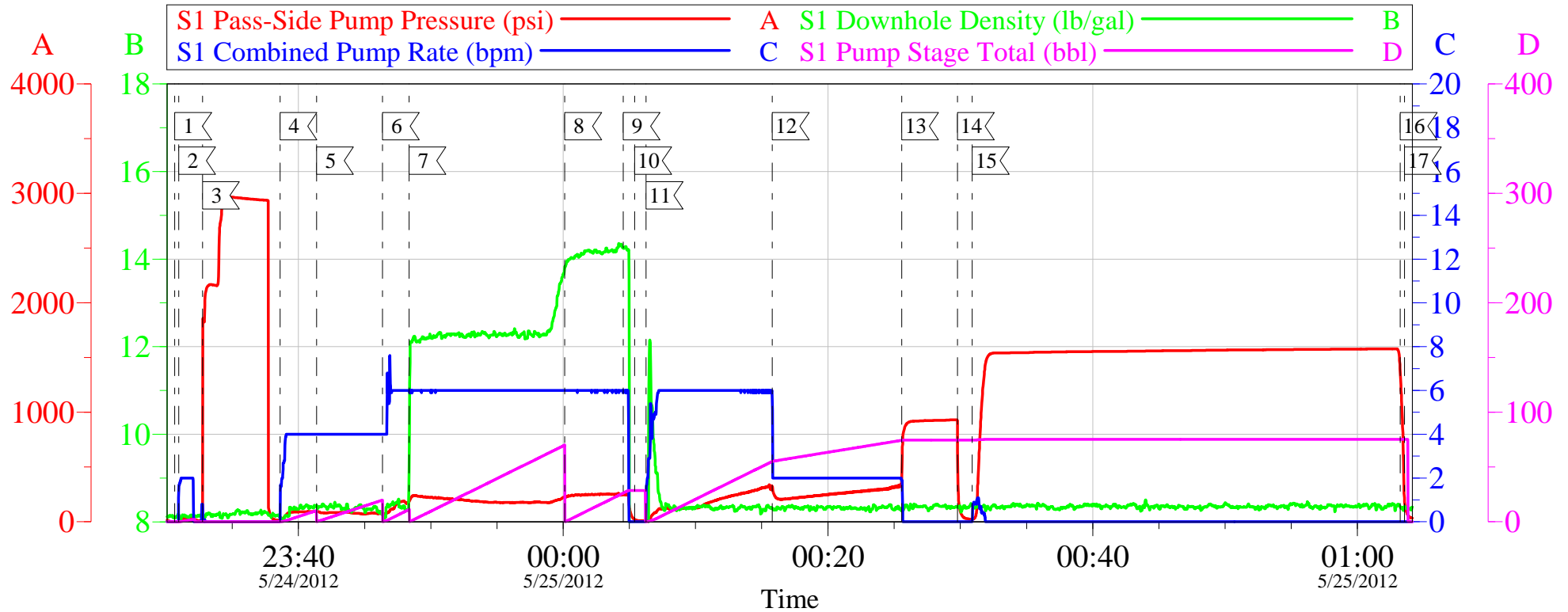
Sold To #: 344034		Ship To #: 2929190		Quote #:		Sales Order #: 9537376	
Customer: OXY GRAND JUNCTION EBUSINESS				Customer Rep: Clark, Darryl			
Well Name: Shell			Well #: 797-03-13A			API/UWI #: 05-045-21442	
Field: GRAND VALLEY		City (SAP): PARACHUTE		County/Parish: Garfield		State: Colorado	
Legal Description:							
Lat: N 39.48 deg. OR N 39 deg. 28 min. 46.499 secs.				Long: W 108.202 deg. OR W -109 deg. 47 min. 52.39 secs.			
Contractor: H&P 330			Rig/Platform Name/Num: H&P 330				
Job Purpose: Cement Surface Casing						Ticket Amount:	
Well Type: Development Well			Job Type: Cement Surface Casing				
Sales Person: HIMES, JEFFREY			Srv Supervisor: CHASTAIN, DERICK			MBU ID Emp #: 455848	

Activity Description	Date/Time	Cht #	Rate bbl/min	Volume bbl		Pressure psig		Comments
				Stage	Total	Tubing	Casing	
Call Out	05/24/2012 09:00							ON LOCATION FROM PREVIOUS JOB
Other	05/24/2012 21:00							SPOT BULK TRUCK
Pre-Rig Up Safety Meeting	05/24/2012 21:45							WITH ALL HES PERSONNEL
Rig-Up Equipment	05/24/2012 22:00							1 ELITE PUMP TRUCK, 1 660 BULK TRUCK, 1 F-450 PICKUP. IRON RUN FROM PUMP TRUCK TO OFF LINE 9 5/8" PLUG CONTAINER. 2 H2O UPRIGHTS.
Pre-Job Safety Meeting	05/24/2012 23:00							WITH ALL PERSONNEL ON LOCATION
Start Job	05/24/2012 23:30							TD: 1060', TP: 1009.9', SJ: 42.7', FC: 967.2', CSG: 9.625" 36# J-55, OH: 12 1/4", MUD: PPG: 9.2, TEMP: 98, PV: 16, YP: 18
Other	05/24/2012 23:30		2	2			36.0	FILL LINES
Test Lines	05/24/2012 23:32							STAGED TEST AT 2140 PSI, THEN TESTED TO 2967 PSI. HELD PRESSURE FOR 2 MIN, NO LEAKS.
Pump Spacer 1	05/24/2012 23:38		4	10			95.0	FRESH H2O SPACER
Pump Spacer 1	05/24/2012 23:41		4	20			72.0	GEL SPACER, 5 GAL PER 20 BBL
Pump Spacer 1	05/24/2012 23:46		6	10			175.0	FRESH H2O SPACER.

Activity Description	Date/Time	Cht #	Rate bbl/min	Volume bbl		Pressure psig		Comments
				Stage	Total	Tubing	Casing	
Pump Lead Cement	05/24/2012 23:48		6	67			227.0	158 SKS, 12.3 LB/GAL, 2.38 FT3/SK, 13.77 GAL/SK.
Pump Tail Cement	05/25/2012 00:00		6	32.1			250.0	126 SKS, 14.2 LB/GAL, 1.43 FT3/SK, 6.85 GAL/SK
Shutdown	05/25/2012 00:04							
Drop Top Plug	05/25/2012 00:05							VERIFY PLUG LAUNCHED
Pump Displacement	05/25/2012 00:06		6	74.8			310.0	FRESH H2O DISPLACEMENT. CEMENT TO SURFACE @ 35.8 BBL GONE OF DISPLACEMENT.
Slow Rate	05/25/2012 00:15		2	55			340.0	SLOW RATE 20 BBLS PRIOR TO CALCULATED DISPLACEMENT
Bump Plug	05/25/2012 00:25		2	74.8			920.0	PLUG BUMPED
Check Floats	05/25/2012 00:29							FLOATS HOLDING
Pressure Up	05/25/2012 00:30			0.75			1580.0	TEST CASING AT 1500 PSI FOR 30 MIN.
Release Casing Pressure	05/25/2012 01:03							
End Job	05/25/2012 01:03							GOOD RETURNS THROUGHOUT JOB. 39 BBLS CEMENT TO SURFACE. 40 LBS SUGAR USED, NO ADD HOURS CHARGED, NO DERRICK CHARGE.
Pre-Rig Down Safety Meeting	05/25/2012 01:15							WITH ALL HES PERSONNEL
Rig-Down Equipment	05/25/2012 01:30							
Pre-Convoy Safety Meeting	05/25/2012 01:55							WITH ALL HES PERSONNEL
Crew Leave Location	05/25/2012 02:00							LEFT LOCATION FREE OF DEBRESS
Comment	05/25/2012 02:00							THANK YOU FOR CHOOSING HALLIBURTON. DERICK CHASTAIN AND CREW

OXY - SHELL 797-03-13A

9 5/8" SURFACE CASING



Customer: OXY
Well Description: SHELL 797-03-13A
Company Rep: DARRYL CLARK

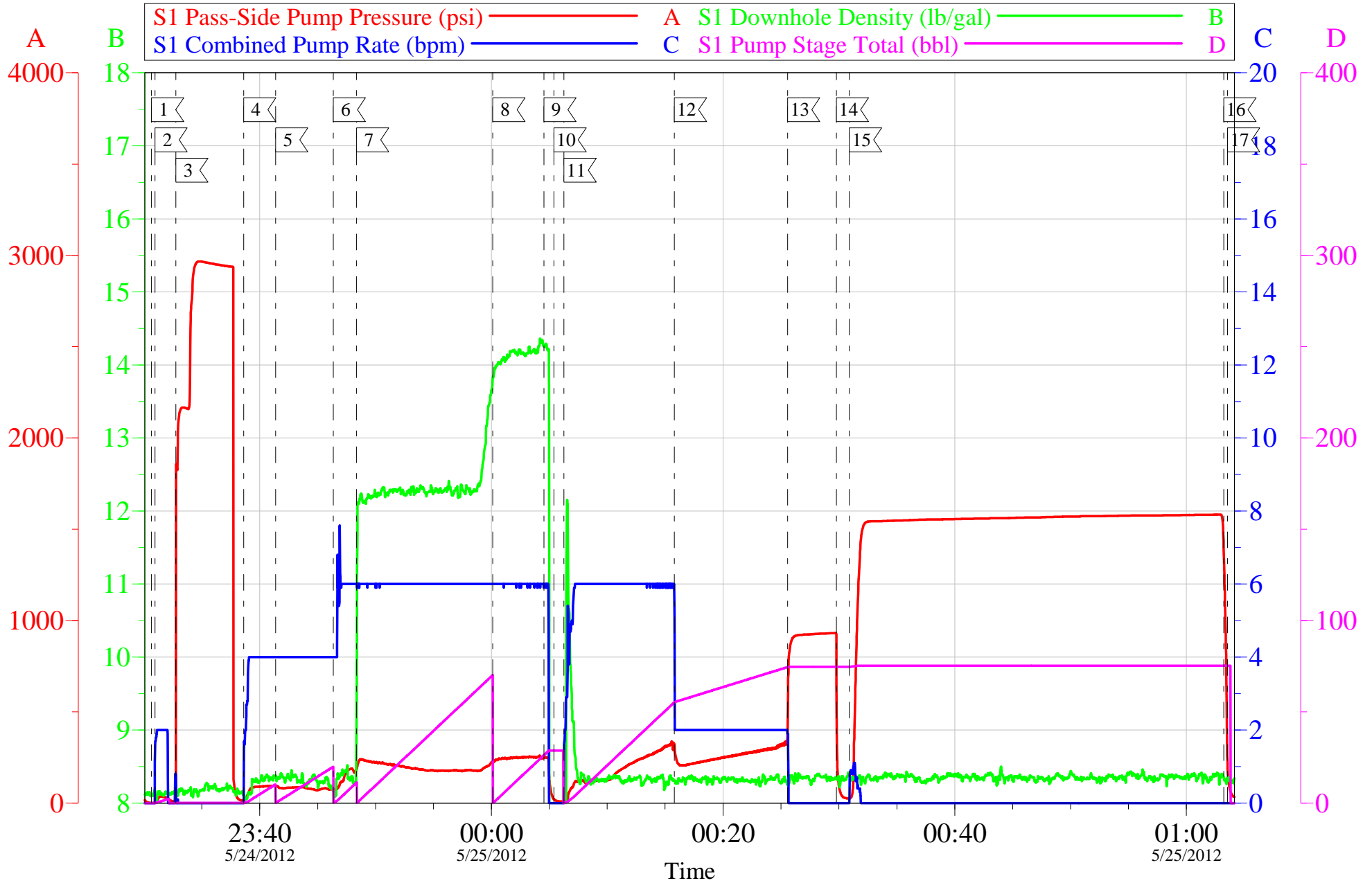
Job Date: 24-May-2012
Job Type: SURFACE
Cement Supervisor: DERICK CHASTAIN

Sales Order #: 9537376
ADC Used: YES
Elite #1: TRAVIS BROWN

OptiCem v6.4.10
25-May-12 01:46

OXY - SHELL 797-03-13A

9 5/8" SURFACE CASING



Customer: OXY
Well Description: SHELL 797-03-13A
Company Rep: DARRYL CLARK

Job Date: 24-May-2012
Job Type: SURFACE
Cement Supervisor: DERICK CHASTAIN

Sales Order #: 9537376
ADC Used: YES
Elite #1: TRAVIS BROWN

OptiCem v6.4.10
25-May-12 01:46

HALLIBURTON

Water Analysis Report

Company: OXY
Submitted by: DERICK CHASTAIN
Attention: J. Trout
Lease: SHELL
Well #: 797-03-13A

Date: 5/24/2012
Date Rec.: 5/24/2012
S.O.#: 9537376
Job Type: SURFACE

Specific Gravity	<i>MAX</i>	1
pH	<i>8</i>	7
Potassium (K)	<i>5000</i>	0 Mg / L
Calcium (Ca)	<i>500</i>	0 Mg / L
Iron (FE2)	<i>300</i>	0 Mg / L
Chlorides (Cl)	<i>3000</i>	0 Mg / L
Sulfates (SO ₄)	<i>1500</i>	<200 Mg / L
Chlorine (Cl ₂)		0 Mg / L
Temp	<i>40-80</i>	55 Deg
Total Dissolved Solids		260 Mg / L

Respectfully: DERICK CHASTAIN

Title: CEMENTING SUPERVISOR

Location: Grand Junction, CO

NOTICE:

This report is limited to the described sample tested. Any person using or relying on this report agrees that Halliburton shall not be liable for any loss or damage whether due to act or omission resulting from such report or its use

Sales Order #: 9537376	Line Item: 10	Survey Conducted Date: 5/25/2012
Customer: OXY GRAND JUNCTION EBUSINESS		Job Type (BOM): CMT SURFACE CASING BOM
Customer Representative: GRAHM FLAGG		API / UWI: (leave blank if unknown) 05-045-21442
Well Name: Shell		Well Number: 797-03-13A
Well Type: Development Well	Well Country: United States of America	
H2S Present: No	Well State: Colorado	Well County: Garfield

Dear Customer,

We hope that you were satisfied with the service quality of this job performed by Halliburton. It is the aim of our management and service personnel to deliver equipment and service of a standard unmatched in the service sector of the energy industry.

Please take the time to let us know if our performance met with your satisfaction. Please be as critical as possible to ensure we constantly improve our service. Your comments are of great value to us and are intended for the exclusive use of Halliburton.

CUSTOMER SATISFACTION SURVEY

CATEGORY	CUSTOMER SATISFACTION RESPONSE	
Survey Conducted Date	The date the survey was conducted	5/25/2012
Survey Interviewer	The survey interviewer is the person who initiated the survey.	DERICK CHASTAIN (HB23225)
Customer Participation	Did the customer participate in this survey? (Y/N)	Yes
Customer Representative	Enter the Customer representative name	GRAHM FLAGG
HSE	Was our HSE performance satisfactory? Circle Y or N	Yes
Equipment	Were you satisfied with our Equipment? Circle Y or N	Yes
Personnel	Were you satisfied with our people? Circle Y or N	Yes
Customer Comment	Customer's Comment	

CUSTOMER SIGNATURE

Sales Order #: 9537376	Line Item: 10	Survey Conducted Date: 5/25/2012
Customer: OXY GRAND JUNCTION EBUSINESS		Job Type (BOM): CMT SURFACE CASING BOM
Customer Representative: GRAHM FLAGG		API / UWI: (leave blank if unknown) 05-045-21442
Well Name: Shell		Well Number: 797-03-13A
Well Type: Development Well	Well Country: United States of America	
H2S Present: No	Well State: Colorado	Well County: Garfield

KEY PERFORMANCE INDICATORS

General	
Survey Conducted Date The date the survey was conducted	5/25/2012

Cementing KPI Survey	
Type of Job Select the type of job. (Cementing or Non-Cementing)	0
Select the Maximum Deviation range for this Job What is the highest deviation for the job you just completed? This may not be the maximum well deviation.	Vertical
Total Operating Time (hours) Total Operating Hours Including Rig-up, Pumping, Rig-down. Enter in decimal format.	3
HSE Incident, Accident, Injury HSE Incident, Accident, Injury. This should be recordable incidents only.	No
Was the job purpose achieved? Was the job delivered correctly as per customer agreed design?	Yes
Operating Hours (Pumping Hours) Total number of hours pumping fluid on this job. Enter in decimal format.	1
Customer Non-Productive Rig Time (hrs) Lost time due to Halliburton in the start, execution, or completion of an ordered service or product, or delays in a follow-on service. Enter in decimal format. 0 if none.	0
Type of Rig Classification Job Was Performed Type Of Rig (classification) Job Was Performed On	Drilling Rig (Portable)
Number Of JSAs Performed Number Of Jsas Performed	7
Number of Unplanned Shutdowns Unplanned shutdown is when injection stops for any period of time.	0
Was this a Primary Cement Job (Yes / No)	Yes

Sales Order #: 9537376	Line Item: 10	Survey Conducted Date: 5/25/2012
Customer: OXY GRAND JUNCTION EBUSINESS		Job Type (BOM): CMT SURFACE CASING BOM
Customer Representative: GRAHM FLAGG		API / UWI: (leave blank if unknown) 05-045-21442
Well Name: Shell		Well Number: 797-03-13A
Well Type: Development Well	Well Country: United States of America	
H2S Present: No	Well State: Colorado	Well County: Garfield

Primary Cement Job= Casing job, Liner job, or Tie-back job.	
Did We Run Wiper Plugs? Did We Run Top And Bottom Casing Wiper Plugs?	Top
Mixing Density of Job Stayed in Designed Density Range (0-100%) Density Range defined as +/- .20 ppg. Calculation: Total BBLs cement mixed at designed density divided by total BBLs of cement multiplied by 100	99
Was Automated Density Control Used? Was Automated Density Control (ADC) Used ?	Yes
Pump Rate (percent) of Job Stayed At Designed Pump Rate Pump Rate range defined as +/- 1bbl/min. Calculation: Total BBLs of fluid pumped at the designed rate divided by Total BBLs of fluid pumped, multiplied by 100	99
Nbr of Remedial Sqz Jobs Rqd - Competition Number Of Remedial Squeeze Jobs Required After Primary Job Performed By Competition	0
Nbr of Remedial Plug Jobs Rqd - HES Number Of Remedial Plug Jobs Needed After Primary Plug Pumped By HES	0
Nbr of Remedial Sqz Jobs Rqd - HES Number Of Remedial Squeeze Jobs Required After Primary Job Performed By HES	0