
OXY GRAND JUNCTION EBUSINESS

**SHELL 797-03-13
GRAND VALLEY
Garfield County , Colorado**

Cement Surface Casing
18-May-2012

Post Job Summary

The Road to Excellence Starts with Safety

Sold To #: 344034	Ship To #: 344034	Quote #:	Sales Order #: 9502963
Customer: OXY GRAND JUNCTION EBUSINESS	Customer Rep: VILLEGAS, ALEX		
Well Name: SHELL	Well #: 797-03-13	API/UWI #: 05-045-21285	
Field: GRAND VALLEY	City (SAP): ADDISON	County/Parish: Garfield	State: Colorado
Lat: N 39.48 deg. OR N 39 deg. 28 min. 46.589 secs.	Long: W 108.202 deg. OR W -109 deg. 47 min. 52.379 secs.		
Contractor: WORKOVER	Rig/Platform Name/Num: WORK OVER		
Job Purpose: Cement Surface Casing			
Well Type: Development Well	Job Type: Cement Surface Casing		
Sales Person: HIMES, JEFFREY	Srv Supervisor: DEUSSEN, EDWARD	MBU ID Emp #: 485182	

Job Personnel

HES Emp Name	Exp Hrs	Emp #	HES Emp Name	Exp Hrs	Emp #	HES Emp Name	Exp Hrs	Emp #
ARNOLD, EDWARD John	4.0	439784	BRENNECKE, ANDREW Bailey	4.0	486345	DEUSSEN, EDWARD Eric	4.0	485182
VANALSTYNE, TROY L	4.0	420256						

Equipment

HES Unit #	Distance-1 way	HES Unit #	Distance-1 way	HES Unit #	Distance-1 way	HES Unit #	Distance-1 way
10783493	120 mile	10822007	120 mile	11259882	120 mile	11542767	120 mile
11808835	120 mile						

Job Hours

Date	On Location Hours	Operating Hours	Date	On Location Hours	Operating Hours	Date	On Location Hours	Operating Hours
5/18/2012	4.0	1.5						

TOTAL	Total is the sum of each column separately							
-------	--	--	--	--	--	--	--	--

Job

Formation Name	Top	Bottom	Called Out	Date	Time	Time Zone
Formation Depth (MD)			On Location	17 - May - 2012	20:00	MST
Form Type		BHST	Job Started	17 - May - 2012	22:00	MST
Job depth MD	1041. ft	Job Depth TVD	Job Completed	18 - May - 2012	07:51	MST
Water Depth		Wk Ht Above Floor	Deparated Loc	18 - May - 2012	09:23	MST
Perforation Depth (MD)	From	To		18 - May - 2012	10:30	MST

Well Data

Description	New / Used	Max pressure psig	Size in	ID in	Weight lbm/ft	Thread	Grade	Top MD ft	Bottom MD ft	Top TVD ft	Bottom TVD ft
-------------	------------	-------------------	---------	-------	---------------	--------	-------	-----------	--------------	------------	---------------

Tools and Accessories

Type	Size	Qty	Make	Depth	Type	Size	Qty	Make	Depth	Type	Size	Qty	Make
Guide Shoe					Packer					Top Plug			
Float Shoe					Bridge Plug					Bottom Plug			
Float Collar					Retainer					SSR plug set			
Insert Float										Plug Container			
Stage Tool										Centralizers			

Miscellaneous Materials

Gelling Agt		Conc		Surfactant		Conc		Acid Type		Qty		Conc	%
Treatment Fld		Conc		Inhibitor		Conc		Sand Type		Size		Qty	

Fluid Data

Stage/Plug #: 1													
Fluid #	Stage Type	Fluid Name	Qty	Qty uom	Mixing Density lbm/gal	Yield ft3/sk	Mix Fluid Gal/sk	Rate bbl/min	Total Mix Fluid Gal/sk				

Stage/Plug #: 1													
Fluid #	Stage Type	Fluid Name	Qty	Qty uom	Mixing Density lbm/gal	Yield ft3/sk	Mix Fluid Gal/sk	Rate bbl/min	Total Mix Fluid Gal/sk				

Stage/Plug #: 1									
1	Fresh Water Spacer		10.00	bbl	8.33	.0	.0	.0	
2	Gel Water Spacer		20.00	bbl	8.34	.0	.0	.0	
0.25 gal/bbl		LGC-36 UC, BULK (101582749)							
3	Fresh Water Spacer		10.00	bbl	8.33	.0	.0	.0	
4	Lead Cement	VERSACEM (TM) SYSTEM (452010)	158.0	sacks	12.3	2.38	13.77		13.77
5	Tail Cement	SWIFTCES (TM) SYSTEM (452990)	126.0	sacks	14.2	1.43	6.85		6.85
6.85 Gal		FRESH WATER							
6	Fresh Water Displacement		74.00	bbl	8.34	.0	.0	.0	
Calculated Values		Pressures		Volumes					
Displacement	74.3	Shut In: Instant		Lost Returns	0	Cement Slurry	99.1	Pad	
Top Of Cement		5 Min		Cement Returns	32	Actual Displacement	74.3	Treatment	
Frac Gradient		15 Min		Spacers		Load and Breakdown		Total Job	210
Rates									
Circulating		Mixing	6	Displacement	6	Avg. Job	6		
Cement Left In Pipe	Amount	44.13 ft	Reason	Shoe Joint					
Frac Ring # 1 @	ID	Frac ring # 2 @	ID	Frac Ring # 3 @	ID	Frac Ring # 4 @	ID		
The Information Stated Herein Is Correct				Customer Representative Signature					

The Road to Excellence Starts with Safety

Sold To #: 344034		Ship To #: 344034		Quote #:		Sales Order #: 9502963	
Customer: OXY GRAND JUNCTION EBUSINESS				Customer Rep: VILLEGAS, ALEX			
Well Name: SHELL			Well #: 797-03-13			API/UWI #: 05-045-21285	
Field: GRAND VALLEY		City (SAP): ADDISON		County/Parish: Garfield			State: Colorado
Legal Description:							
Lat: N 39.48 deg. OR N 39 deg. 28 min. 46.589 secs.				Long: W 108.202 deg. OR W -109 deg. 47 min. 52.379 secs.			
Contractor: WORKOVER			Rig/Platform Name/Num: WORK OVER				
Job Purpose: Cement Surface Casing						Ticket Amount:	
Well Type: Development Well			Job Type: Cement Surface Casing				
Sales Person: HIMES, JEFFREY			Srvc Supervisor: DEUSSEN, EDWARD			MBU ID Emp #: 485182	

Activity Description	Date/Time	Cht #	Rate bbl/min	Volume bbl		Pressure psig		Comments
				Stage	Total	Tubing	Casing	
Call Out	05/17/2012 20:00							Crew already on location
Assessment Of Location Safety Meeting	05/18/2012 07:00							
Pre-Rig Up Safety Meeting	05/18/2012 07:05							Including entire cement crew.
Rig-Up Equipment	05/18/2012 07:10							1 Elite #1; 1 660 bulk truck; 1 hard line to cellar; 2 lines to uprights; 9.625" compact head.
Rig-Up Completed	05/18/2012 07:15							
Pre-Job Safety Meeting	05/18/2012 07:30							Including everyone on location.
Start Job	05/18/2012 07:51							TD 1061 ; TP 1041 ; SJ 44.13 ; OH 12 1/4" ; Casing 9.625" 36#; Mud 9.2ppg.
Pump Water	05/18/2012 07:52		2	2			26.0	Fill lines with fresh water.
Test Lines	05/18/2012 07:53					3283.0		Good pressure test, no leaks.
Pump Spacer 1	05/18/2012 07:59		4	10			84.0	10 BBL fresh water spacer.
Pump Spacer 2	05/18/2012 08:01		4	20			71.0	20 BBL Gel spacer
Pump Spacer 1	05/18/2012 08:06		4	10			99.0	10 BBL fresh water spacer
Pump Lead Cement	05/18/2012 08:09		6	67			209.0	158 sks Lead Cement, 12.3 ppg, 2.38 cf3, 13.77 gal/sk.
Pump Tail Cement	05/18/2012 08:21		6	32.1			238.0	126 sks Tail Cement, 14.2 ppg, 1.43 cf3, 6.85 gal/sk.
Shutdown	05/18/2012 08:26						235.0	

Sold To # : 344034

Ship To # :344034

Quote # :

Sales Order # :

9502963

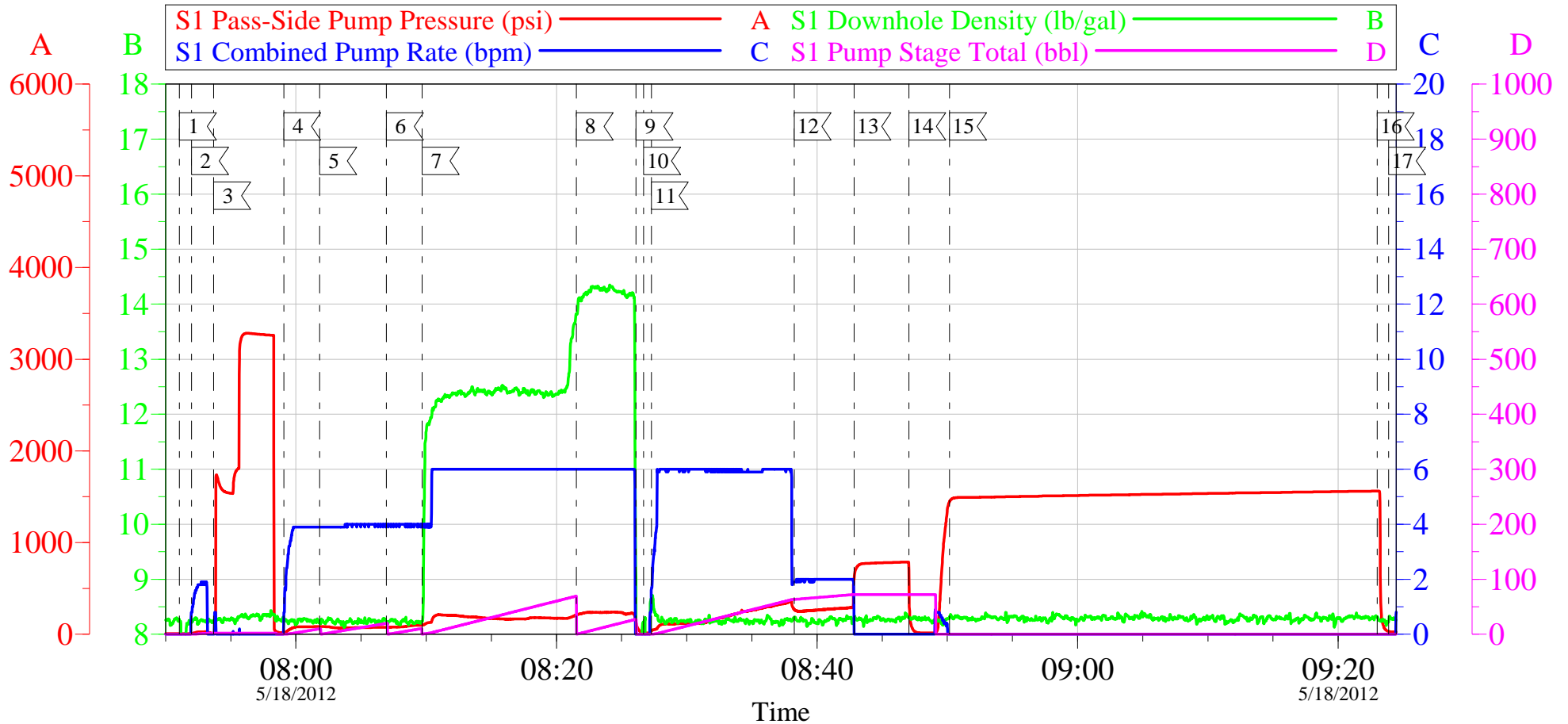
SUMMIT Version: 7.3.0021

Friday, May 18, 2012 10:05:00

Activity Description	Date/Time	Cht #	Rate bbl/ min	Volume bbl		Pressure psig		Comments
				Stage	Total	Tubing	Casing	
Drop Plug	05/18/2012 08:26							Plug left container.
Pump Displacement	05/18/2012 08:27		6	64			334.0	Fresh water displacement.
Slow Rate	05/18/2012 08:38		2	10			264.0	Slow rate 10 BBL's prior to bumping the plug.
Bump Plug	05/18/2012 08:42						270.0	Bumped plug, took 500 PSI over.
Check Floats	05/18/2012 08:47							Floats held, BBL back
Pressure Test	05/18/2012 08:50						1518.0	Casing test to 1500 psi for 1/2 hour
End Job	05/18/2012 09:23							
Pre-Rig Down Safety Meeting	05/18/2012 09:25							Including entire cement crew.
Rig-Down Equipment	05/18/2012 09:26							
Rig-Down Completed	05/18/2012 09:45							
Pre-Convoy Safety Meeting	05/18/2012 10:15							Including entire cement crew.
Crew Leave Location	05/18/2012 10:30							Crew leave location for Service Center or another location.
Other	05/18/2012 10:31							Thank You for using Halliburton. Ed Arnold and Crew.

OXY SHELL 797-03-13

9 5/8" SURFACE CASING



Local Event Log

1 START JOB	07:51:04	2 FILL LINES	07:52:00	3 PRESSURE TEST	07:53:42
4 PUMP WATER SPACER	07:59:05	5 PUMP GEL SPACER	08:01:50	6 PUMP WATER SPACER	08:06:57
7 PUMP LEAD CEMENT	08:09:42	8 PUMP TAIL CEMENT	08:21:31	9 SHUT DOWN	08:26:07
10 DROP PLUG	08:26:42	11 PUMP DISPLACEMENT	08:27:17	12 SLOW RATE	08:38:15
13 BUMP PLUG	08:42:50	14 CHECK FLOATS	08:47:02	15 CASING PRESSURE TEST	08:50:10
16 RELEASE PRESSURE	09:23:00	17 END JOB	09:23:52		

Customer: OXY
Well Description: SHELL 797-03-13
Company Rep: ALEX VILLEGAS

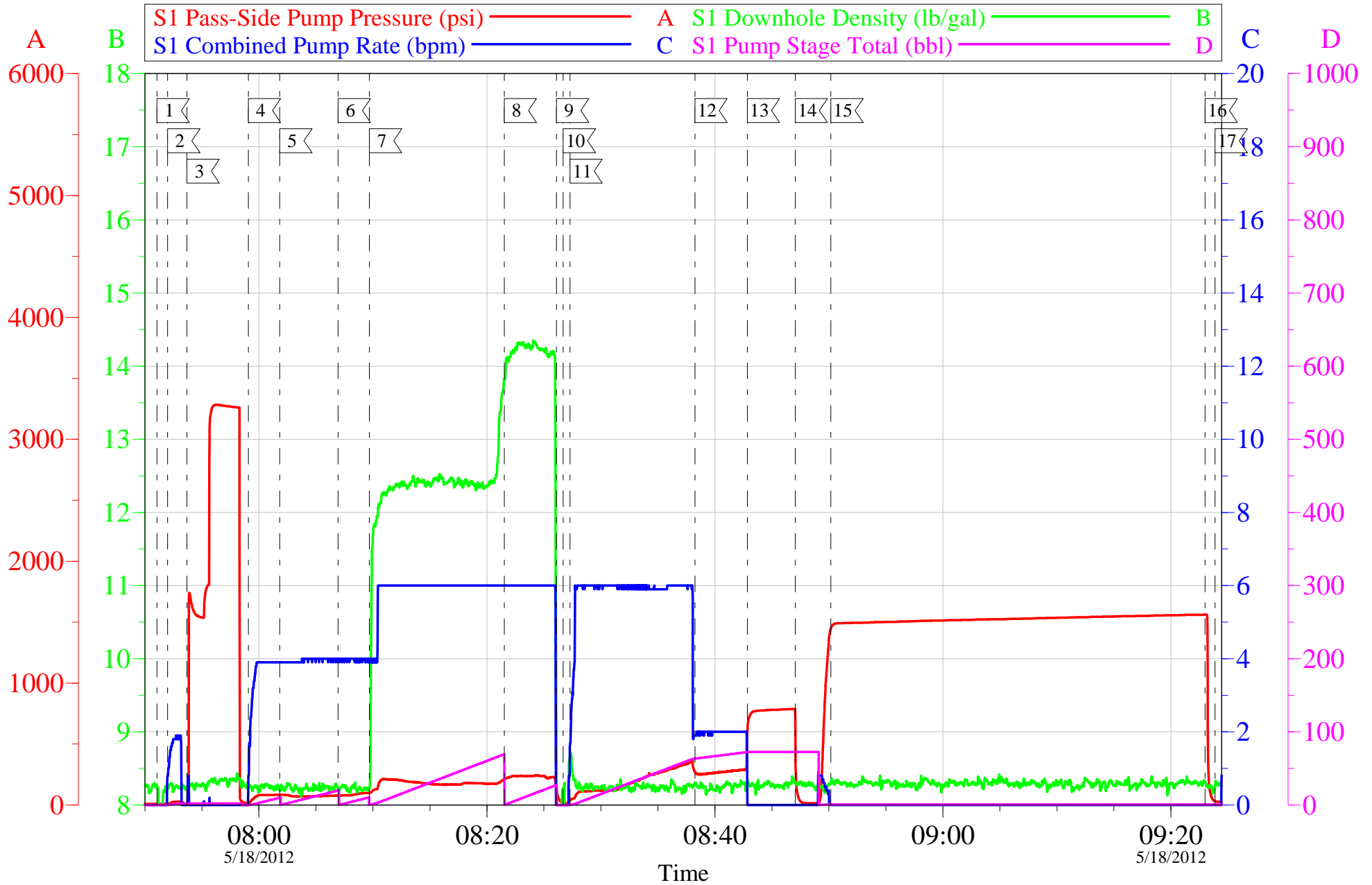
Job Date: 18-May-2012
Job Type: SURFACE
Cement Supervisor: ED DEUSSEN

Sales Order #: 9502963
ADC Used: YES
Elite #1 TROY VANALSTYNE

OptiCem v6.4.10
18-May-12 09:41

OXY SHELL 797-03-13

9 5/8" SURFACE CASING



Customer: OXY	Job Date: 18-May-2012	Sales Order #: 9502963
Well Description: SHELL 797-03-13	Job Type: SURFACE	ADC Used: YES
Company Rep: ALEX VILLEGAS	Cement Supervisor: ED DEUSSEN	Elite #1 TROY VANALSTYNE

OptiCem v6.4.10
18-May-12 09:42

Sales Order #: 9502963	Line Item: 10	Survey Conducted Date: 5/18/2012
Customer: OXY GRAND JUNCTION EBUSINESS		Job Type (BOM): CMT SURFACE CASING BOM
Customer Representative: ALEX VILLEGAS		API / UWI: (leave blank if unknown) 05-045-21285
Well Name: SHELL		Well Number: 797-03-13
Well Type: Development Well	Well Country: United States of America	
H2S Present:	Well State: Colorado	Well County: Garfield

Dear Customer,

We hope that you were satisfied with the service quality of this job performed by Halliburton. It is the aim of our management and service personnel to deliver equipment and service of a standard unmatched in the service sector of the energy industry.

Please take the time to let us know if our performance met with your satisfaction. Please be as critical as possible to ensure we constantly improve our service. Your comments are of great value to us and are intended for the exclusive use of Halliburton.

CUSTOMER SATISFACTION SURVEY

CATEGORY	CUSTOMER SATISFACTION RESPONSE	
Survey Conducted Date	The date the survey was conducted	5/18/2012
Survey Interviewer	The survey interviewer is the person who initiated the survey.	EDWARD DEUSSEN (HB57194)
Customer Participation	Did the customer participate in this survey? (Y/N)	Yes
Customer Representative	Enter the Customer representative name	ALEX VILLEGAS
HSE	Was our HSE performance satisfactory? Circle Y or N	Yes
Equipment	Were you satisfied with our Equipment? Circle Y or N	Yes
Personnel	Were you satisfied with our people? Circle Y or N	Yes
Customer Comment	Customer's Comment	GREAT JOB

CUSTOMER SIGNATURE

Sales Order #: 9502963	Line Item: 10	Survey Conducted Date: 5/18/2012
Customer: OXY GRAND JUNCTION EBUSINESS		Job Type (BOM): CMT SURFACE CASING BOM
Customer Representative: ALEX VILLEGAS		API / UWI: (leave blank if unknown) 05-045-21285
Well Name: SHELL		Well Number: 797-03-13
Well Type: Development Well	Well Country: United States of America	
H2S Present:	Well State: Colorado	Well County: Garfield

KEY PERFORMANCE INDICATORS

General	
Survey Conducted Date	5/18/2012
The date the survey was conducted	

Cementing KPI Survey	
Type of Job	0
Select the type of job. (Cementing or Non-Cementing)	
Select the Maximum Deviation range for this Job	Vertical
What is the highest deviation for the job you just completed? This may not be the maximum well deviation.	
Total Operating Time (hours)	2.5
Total Operating Hours Including Rig-up, Pumping, Rig-down. Enter in decimal format.	
HSE Incident, Accident, Injury	No
HSE Incident, Accident, Injury. This should be recordable incidents only.	
Was the job purpose achieved?	Yes
Was the job delivered correctly as per customer agreed design?	
Operating Hours (Pumping Hours)	1.5
Total number of hours pumping fluid on this job. Enter in decimal format.	
Customer Non-Productive Rig Time (hrs)	0
Lost time due to Halliburton in the start, execution, or completion of an ordered service or product, or delays in a follow-on service. Enter in decimal format. 0 if none.	
Type of Rig Classification Job Was Performed	Drilling Rig (Portable)
Type Of Rig (classification) Job Was Performed On	
Number Of JSAs Performed	5
Number Of Jsas Performed	
Number of Unplanned Shutdowns	0
Unplanned shutdown is when injection stops for any period of time.	
Was this a Primary Cement Job (Yes / No)	Yes

Sales Order #: 9502963	Line Item: 10	Survey Conducted Date: 5/18/2012
Customer: OXY GRAND JUNCTION EBUSINESS		Job Type (BOM): CMT SURFACE CASING BOM
Customer Representative: ALEX VILLEGAS		API / UWI: (leave blank if unknown) 05-045-21285
Well Name: SHELL		Well Number: 797-03-13
Well Type: Development Well	Well Country: United States of America	
H2S Present:	Well State: Colorado	Well County: Garfield

Primary Cement Job= Casing job, Liner job, or Tie-back job.	
Did We Run Wiper Plugs? Did We Run Top And Bottom Casing Wiper Plugs?	Top
Mixing Density of Job Stayed in Designed Density Range (0-100%) Density Range defined as +/- .20 ppg. Calculation: Total BBLs cement mixed at designed density divided by total BBLs of cement multiplied by 100	99
Was Automated Density Control Used? Was Automated Density Control (ADC) Used ?	Yes
Pump Rate (percent) of Job Stayed At Designed Pump Rate Pump Rate range defined as +/- 1bbl/min. Calculation: Total BBLs of fluid pumped at the designed rate divided by Total BBLs of fluid pumped, multiplied by 100	6
Nbr of Remedial Sqz Jobs Rqd - Competition Number Of Remedial Squeeze Jobs Required After Primary Job Performed By Competition	0
Nbr of Remedial Plug Jobs Rqd - HES Number Of Remedial Plug Jobs Needed After Primary Plug Pumped By HES	0
Nbr of Remedial Sqz Jobs Rqd - HES Number Of Remedial Squeeze Jobs Required After Primary Job Performed By HES	0