



Lat40°, Inc. 1635 Foxtrail Drive, Suite 325 Loveland, CO 970-776-3321

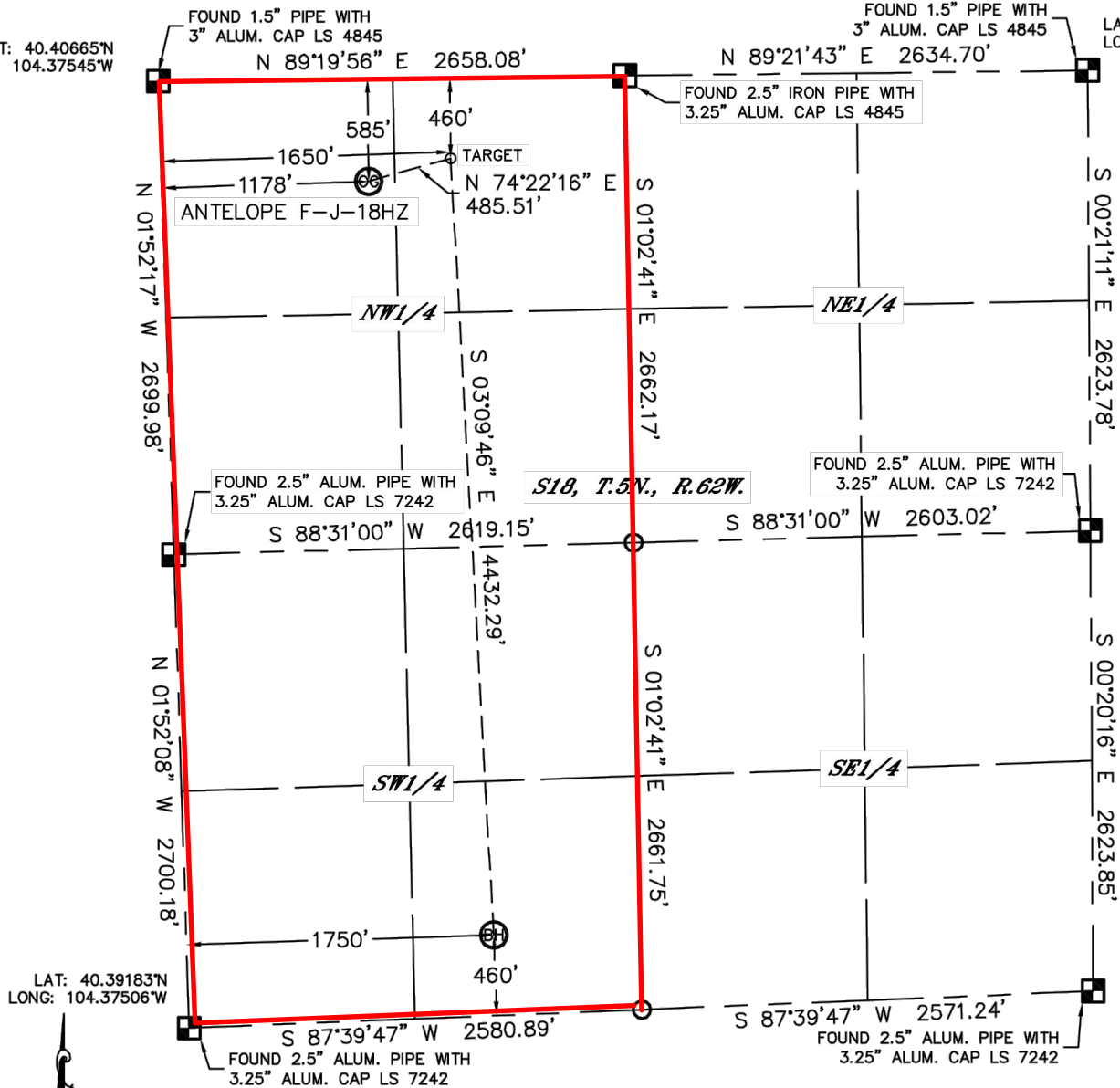
WELL LOCATION CERTIFICATE

THIS MAP DOES NOT REPRESENT A BOUNDARY SURVEY

SECTION: 18
TOWNSHIP: 5N
RANGE: 62W

LAT: 40.40665°N
LONG: 104.37545°W

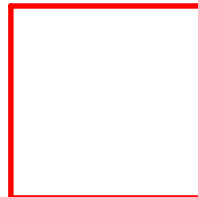
LAT: 40.40663°N
LONG: 104.35645°W



LAT: 40.39183°N
LONG: 104.37506°W

LAT: 40.39222°N
LONG: 104.35657°W

In accordance with a request from Keith Caplan with BONANZA CREEK ENERGY, INC., Lat40°, Inc. has determined the surface location of the ANTELOPE F-J-18HZ to be 585' from the NORTH line and 1178' from the WEST line and the bottom hole to be 460' from the SOUTH line and 1750' from



Wellbore Spacing Unit Outline



Wellbore Spacing Unit Map

08 June 2012 ksc

Antelope F-J-18HZ
W/2 Sec 18 T5N R62W 6th PM
Weld County, Colorado