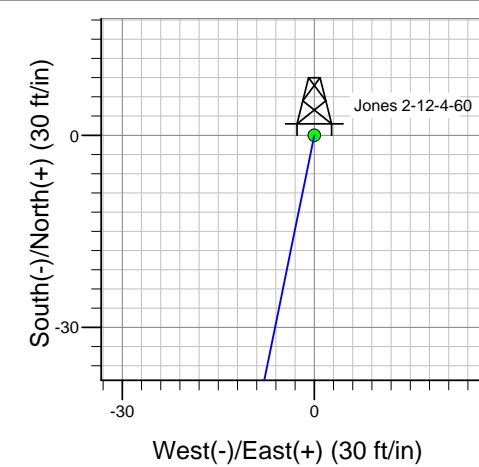
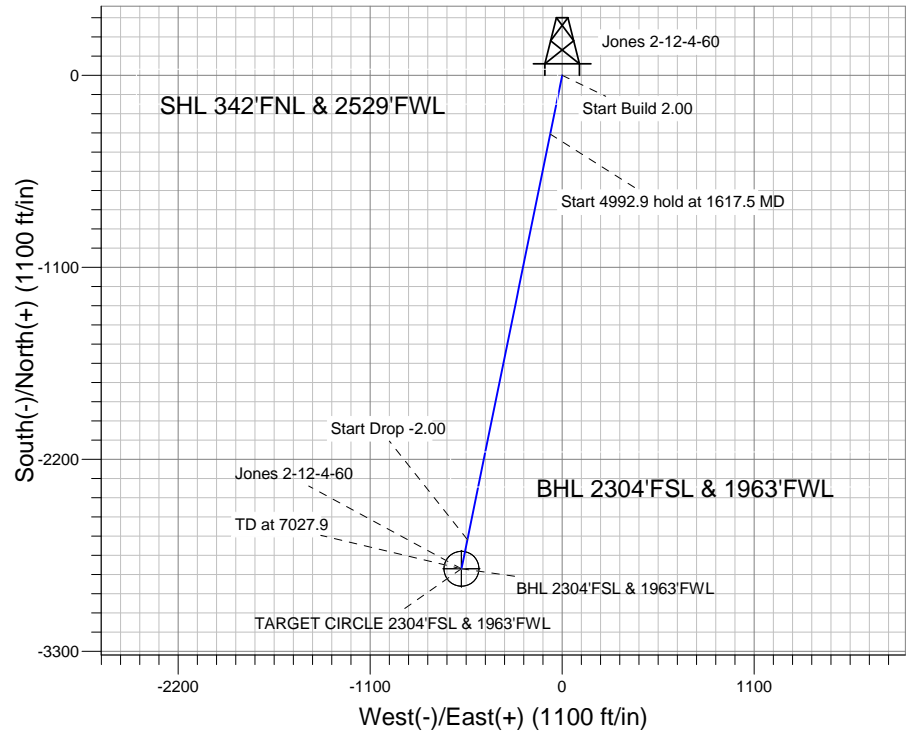
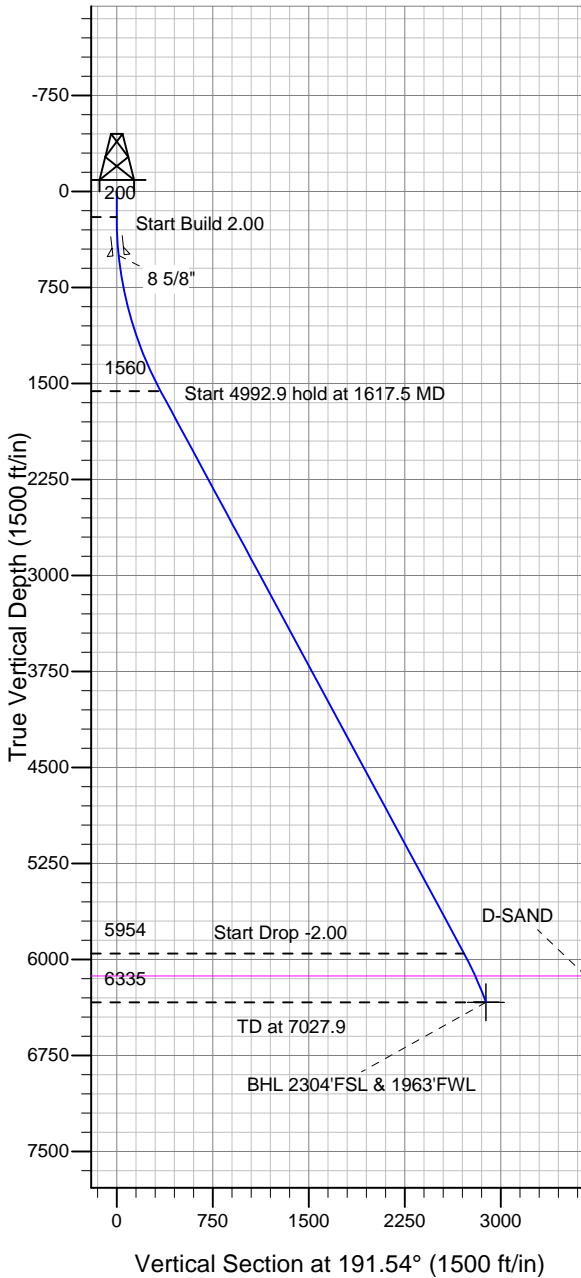


Well Name: Jones 2-12-4-60

Surface Location: Jones 2-12-4-60 Pad Sec.2-T4N-R60W
 North American Datum 1983 US State Plane 1983 Colorado Northern Zone
 Ground Elevation: 4381.0
 +N/-S +E/-W Northing Easting Latitude Longitude Slot
 0.0 0.0 1373122.86 3399949.88 40.348740 -104.064990
 EST KB 13' RKB @ 4394.0ft (EST KB 13')

Firststrike Energy



Jones 2-12-4-60 Pad Sec.2-T4N-R60W
 Jones 2-12-4-60
 Plan #4 (6-21-12)
 11:30, June 21 2012



Azimuths to True North
 Magnetic North: 8.34°

Magnetic Field
 Strength: 53074.2snT
 Dip Angle: 67.09°
 Date: 6/21/2012
 Model: IGRF2010

WELLBORE TARGET DETAILS (LAT/LONG)

Name	TVD	+N/-S	+E/-W	Latitude	Longitude	Shape
BHL 2304'FSL & 1963'FWL	6335.0	-2827.0	-577.0	40.340980	-104.067060	Point
TARGET CIRCLE 2304'FSL & 1963'FWL	6335.0	-2827.0	-577.0	40.340980	-104.067060	Circle (Radius: 100.0)

SECTION DETAILS

Sec	MD	Inc	Azi	TVD	+N/-S	+E/-W	DLeg	TFace	VSec	Target
1	0.0	0.00	0.00	0.0	0.0	0.0	0.00	0.00	0.0	
2	200.0	0.00	0.00	200.0	0.0	0.0	0.00	0.00	0.0	
3	1617.5	28.35	191.54	1560.4	-336.7	-68.7	2.00	191.54	343.6	
4	6610.4	28.35	191.54	5954.5	-2659.7	-542.9	0.00	0.00	2714.5	
5	7027.9	20.00	191.54	6335.0	-2827.0	-577.0	2.00	180.00	2885.3	BHL 2304'FSL & 1963'FWL



Directional

Firststrike Energy

SEC.2-T4N-R60W

Jones 2-12-4-60 Pad Sec.2-T4N-R60W

Jones 2-12-4-60

Wellbore #1

Plan: Plan #4 (6-21-12)

Standard Planning Report

21 June, 2012

Plan Sections										
Measured Depth (ft)	Inclination (°)	Azimuth (°)	Vertical Depth (ft)	+N/-S (ft)	+E/-W (ft)	Dogleg Rate (°/100ft)	Build Rate (°/100ft)	Turn Rate (°/100ft)	TFO (°)	Target
0.0	0.00	0.00	0.0	0.0	0.0	0.00	0.00	0.00	0.00	
200.0	0.00	0.00	200.0	0.0	0.0	0.00	0.00	0.00	0.00	
1,617.5	28.35	191.54	1,560.4	-336.7	-68.7	2.00	2.00	0.00	191.54	
6,610.4	28.35	191.54	5,954.5	-2,659.7	-542.9	0.00	0.00	0.00	0.00	
7,027.9	20.00	191.54	6,335.0	-2,827.0	-577.0	2.00	-2.00	0.00	180.00	BHL 2304'FSL & 19

Database:	Landmark	Local Co-ordinate Reference:	Well Jones 2-12-4-60
Company:	Firststrike Energy	TVD Reference:	RKB @ 4394.0ft (EST KB 13')
Project:	SEC.2-T4N-R60W	MD Reference:	RKB @ 4394.0ft (EST KB 13')
Site:	Jones 2-12-4-60 Pad Sec.2-T4N-R60W	North Reference:	True
Well:	Jones 2-12-4-60	Survey Calculation Method:	Minimum Curvature
Wellbore:	Wellbore #1		
Design:	Plan #4 (6-21-12)		

Planned Survey									
Measured Depth (ft)	Inclination (°)	Azimuth (°)	Vertical Depth (ft)	+N/-S (ft)	+E/-W (ft)	Vertical Section (ft)	Dogleg Rate (°/100ft)	Build Rate (°/100ft)	Turn Rate (°/100ft)
0.0	0.00	0.00	0.0	0.0	0.0	0.0	0.00	0.00	0.00
40.0	0.00	0.00	40.0	0.0	0.0	0.0	0.00	0.00	0.00
80.0	0.00	0.00	80.0	0.0	0.0	0.0	0.00	0.00	0.00
120.0	0.00	0.00	120.0	0.0	0.0	0.0	0.00	0.00	0.00
160.0	0.00	0.00	160.0	0.0	0.0	0.0	0.00	0.00	0.00
200.0	0.00	0.00	200.0	0.0	0.0	0.0	0.00	0.00	0.00
240.0	0.80	191.54	240.0	-0.3	-0.1	0.3	2.00	2.00	0.00
280.0	1.60	191.54	280.0	-1.1	-0.2	1.1	2.00	2.00	0.00
320.0	2.40	191.54	320.0	-2.5	-0.5	2.5	2.00	2.00	0.00
360.0	3.20	191.54	359.9	-4.4	-0.9	4.5	2.00	2.00	0.00
400.0	4.00	191.54	399.8	-6.8	-1.4	7.0	2.00	2.00	0.00
440.0	4.80	191.54	439.7	-9.8	-2.0	10.0	2.00	2.00	0.00
480.0	5.60	191.54	479.6	-13.4	-2.7	13.7	2.00	2.00	0.00
500.6	6.01	191.54	500.0	-15.4	-3.2	15.8	2.00	2.00	0.00
8 5/8"									
520.0	6.40	191.54	519.3	-17.5	-3.6	17.9	2.00	2.00	0.00
560.0	7.20	191.54	559.1	-22.1	-4.5	22.6	2.00	2.00	0.00
600.0	8.00	191.54	598.7	-27.3	-5.6	27.9	2.00	2.00	0.00
640.0	8.80	191.54	638.3	-33.0	-6.7	33.7	2.00	2.00	0.00
680.0	9.60	191.54	677.8	-39.3	-8.0	40.1	2.00	2.00	0.00
720.0	10.40	191.54	717.1	-46.1	-9.4	47.1	2.00	2.00	0.00
760.0	11.20	191.54	756.4	-53.5	-10.9	54.6	2.00	2.00	0.00
800.0	12.00	191.54	795.6	-61.3	-12.5	62.6	2.00	2.00	0.00
840.0	12.80	191.54	834.7	-69.8	-14.2	71.2	2.00	2.00	0.00
880.0	13.60	191.54	873.6	-78.7	-16.1	80.3	2.00	2.00	0.00
920.0	14.40	191.54	912.4	-88.2	-18.0	90.0	2.00	2.00	0.00
960.0	15.20	191.54	951.1	-98.2	-20.0	100.2	2.00	2.00	0.00
1,000.0	16.00	191.54	989.6	-108.7	-22.2	111.0	2.00	2.00	0.00
1,040.0	16.80	191.54	1,028.0	-119.8	-24.5	122.3	2.00	2.00	0.00
1,080.0	17.60	191.54	1,066.2	-131.4	-26.8	134.1	2.00	2.00	0.00
1,120.0	18.40	191.54	1,104.3	-143.5	-29.3	146.5	2.00	2.00	0.00
1,160.0	19.20	191.54	1,142.1	-156.1	-31.9	159.3	2.00	2.00	0.00
1,200.0	20.00	191.54	1,179.8	-169.3	-34.6	172.8	2.00	2.00	0.00
1,240.0	20.80	191.54	1,217.3	-182.9	-37.3	186.7	2.00	2.00	0.00
1,280.0	21.60	191.54	1,254.6	-197.1	-40.2	201.2	2.00	2.00	0.00
1,320.0	22.40	191.54	1,291.7	-211.8	-43.2	216.2	2.00	2.00	0.00
1,360.0	23.20	191.54	1,328.6	-227.0	-46.3	231.7	2.00	2.00	0.00
1,400.0	24.00	191.54	1,365.2	-242.7	-49.5	247.7	2.00	2.00	0.00
1,440.0	24.80	191.54	1,401.6	-258.9	-52.8	264.2	2.00	2.00	0.00
1,480.0	25.60	191.54	1,437.8	-275.6	-56.2	281.2	2.00	2.00	0.00
1,520.0	26.40	191.54	1,473.8	-292.7	-59.8	298.8	2.00	2.00	0.00
1,560.0	27.20	191.54	1,509.5	-310.4	-63.4	316.8	2.00	2.00	0.00
1,600.0	28.00	191.54	1,544.9	-328.6	-67.1	335.3	2.00	2.00	0.00
1,617.5	28.35	191.54	1,560.4	-336.7	-68.7	343.6	2.00	2.00	0.00
1,640.0	28.35	191.54	1,580.2	-347.1	-70.9	354.3	0.00	0.00	0.00
1,680.0	28.35	191.54	1,615.4	-365.7	-74.7	373.3	0.00	0.00	0.00
1,720.0	28.35	191.54	1,650.6	-384.3	-78.5	392.3	0.00	0.00	0.00
1,760.0	28.35	191.54	1,685.8	-403.0	-82.2	411.3	0.00	0.00	0.00
1,800.0	28.35	191.54	1,721.0	-421.6	-86.0	430.3	0.00	0.00	0.00
1,840.0	28.35	191.54	1,756.2	-440.2	-89.8	449.2	0.00	0.00	0.00
1,880.0	28.35	191.54	1,791.4	-458.8	-93.6	468.2	0.00	0.00	0.00
1,920.0	28.35	191.54	1,826.6	-477.4	-97.4	487.2	0.00	0.00	0.00
1,960.0	28.35	191.54	1,861.8	-496.0	-101.2	506.2	0.00	0.00	0.00
2,000.0	28.35	191.54	1,897.0	-514.6	-105.0	525.2	0.00	0.00	0.00

Database:	Landmark	Local Co-ordinate Reference:	Well Jones 2-12-4-60
Company:	Firststrike Energy	TVD Reference:	RKB @ 4394.0ft (EST KB 13')
Project:	SEC.2-T4N-R60W	MD Reference:	RKB @ 4394.0ft (EST KB 13')
Site:	Jones 2-12-4-60 Pad Sec.2-T4N-R60W	North Reference:	True
Well:	Jones 2-12-4-60	Survey Calculation Method:	Minimum Curvature
Wellbore:	Wellbore #1		
Design:	Plan #4 (6-21-12)		

Planned Survey									
Measured Depth (ft)	Inclination (°)	Azimuth (°)	Vertical Depth (ft)	+N/-S (ft)	+E/-W (ft)	Vertical Section (ft)	Dogleg Rate (°/100ft)	Build Rate (°/100ft)	Turn Rate (°/100ft)
2,040.0	28.35	191.54	1,932.2	-533.2	-108.8	544.2	0.00	0.00	0.00
2,080.0	28.35	191.54	1,967.4	-551.8	-112.6	563.2	0.00	0.00	0.00
2,120.0	28.35	191.54	2,002.6	-570.4	-116.4	582.2	0.00	0.00	0.00
2,160.0	28.35	191.54	2,037.8	-589.1	-120.2	601.2	0.00	0.00	0.00
2,200.0	28.35	191.54	2,073.0	-607.7	-124.0	620.2	0.00	0.00	0.00
2,240.0	28.35	191.54	2,108.2	-626.3	-127.8	639.2	0.00	0.00	0.00
2,280.0	28.35	191.54	2,143.4	-644.9	-131.6	658.2	0.00	0.00	0.00
2,320.0	28.35	191.54	2,178.6	-663.5	-135.4	677.2	0.00	0.00	0.00
2,360.0	28.35	191.54	2,213.8	-682.1	-139.2	696.2	0.00	0.00	0.00
2,400.0	28.35	191.54	2,249.0	-700.7	-143.0	715.2	0.00	0.00	0.00
2,440.0	28.35	191.54	2,284.2	-719.3	-146.8	734.2	0.00	0.00	0.00
2,480.0	28.35	191.54	2,319.4	-737.9	-150.6	753.2	0.00	0.00	0.00
2,520.0	28.35	191.54	2,354.6	-756.6	-154.4	772.1	0.00	0.00	0.00
2,560.0	28.35	191.54	2,389.8	-775.2	-158.2	791.1	0.00	0.00	0.00
2,600.0	28.35	191.54	2,425.0	-793.8	-162.0	810.1	0.00	0.00	0.00
2,640.0	28.35	191.54	2,460.2	-812.4	-165.8	829.1	0.00	0.00	0.00
2,680.0	28.35	191.54	2,495.4	-831.0	-169.6	848.1	0.00	0.00	0.00
2,720.0	28.35	191.54	2,530.6	-849.6	-173.4	867.1	0.00	0.00	0.00
2,760.0	28.35	191.54	2,565.8	-868.2	-177.2	886.1	0.00	0.00	0.00
2,800.0	28.35	191.54	2,601.0	-886.8	-181.0	905.1	0.00	0.00	0.00
2,840.0	28.35	191.54	2,636.2	-905.4	-184.8	924.1	0.00	0.00	0.00
2,880.0	28.35	191.54	2,671.4	-924.0	-188.6	943.1	0.00	0.00	0.00
2,920.0	28.35	191.54	2,706.6	-942.7	-192.4	962.1	0.00	0.00	0.00
2,960.0	28.35	191.54	2,741.9	-961.3	-196.2	981.1	0.00	0.00	0.00
3,000.0	28.35	191.54	2,777.1	-979.9	-200.0	1,000.1	0.00	0.00	0.00
3,040.0	28.35	191.54	2,812.3	-998.5	-203.8	1,019.1	0.00	0.00	0.00
3,080.0	28.35	191.54	2,847.5	-1,017.1	-207.6	1,038.1	0.00	0.00	0.00
3,120.0	28.35	191.54	2,882.7	-1,035.7	-211.4	1,057.1	0.00	0.00	0.00
3,160.0	28.35	191.54	2,917.9	-1,054.3	-215.2	1,076.1	0.00	0.00	0.00
3,200.0	28.35	191.54	2,953.1	-1,072.9	-219.0	1,095.0	0.00	0.00	0.00
3,240.0	28.35	191.54	2,988.3	-1,091.5	-222.8	1,114.0	0.00	0.00	0.00
3,280.0	28.35	191.54	3,023.5	-1,110.1	-226.6	1,133.0	0.00	0.00	0.00
3,320.0	28.35	191.54	3,058.7	-1,128.8	-230.4	1,152.0	0.00	0.00	0.00
3,360.0	28.35	191.54	3,093.9	-1,147.4	-234.2	1,171.0	0.00	0.00	0.00
3,400.0	28.35	191.54	3,129.1	-1,166.0	-238.0	1,190.0	0.00	0.00	0.00
3,440.0	28.35	191.54	3,164.3	-1,184.6	-241.8	1,209.0	0.00	0.00	0.00
3,480.0	28.35	191.54	3,199.5	-1,203.2	-245.6	1,228.0	0.00	0.00	0.00
3,520.0	28.35	191.54	3,234.7	-1,221.8	-249.4	1,247.0	0.00	0.00	0.00
3,560.0	28.35	191.54	3,269.9	-1,240.4	-253.2	1,266.0	0.00	0.00	0.00
3,600.0	28.35	191.54	3,305.1	-1,259.0	-257.0	1,285.0	0.00	0.00	0.00
3,640.0	28.35	191.54	3,340.3	-1,277.6	-260.8	1,304.0	0.00	0.00	0.00
3,680.0	28.35	191.54	3,375.5	-1,296.3	-264.6	1,323.0	0.00	0.00	0.00
3,720.0	28.35	191.54	3,410.7	-1,314.9	-268.4	1,342.0	0.00	0.00	0.00
3,760.0	28.35	191.54	3,445.9	-1,333.5	-272.2	1,361.0	0.00	0.00	0.00
3,800.0	28.35	191.54	3,481.1	-1,352.1	-276.0	1,380.0	0.00	0.00	0.00
3,840.0	28.35	191.54	3,516.3	-1,370.7	-279.8	1,399.0	0.00	0.00	0.00
3,880.0	28.35	191.54	3,551.5	-1,389.3	-283.6	1,417.9	0.00	0.00	0.00
3,920.0	28.35	191.54	3,586.7	-1,407.9	-287.4	1,436.9	0.00	0.00	0.00
3,960.0	28.35	191.54	3,621.9	-1,426.5	-291.2	1,455.9	0.00	0.00	0.00
4,000.0	28.35	191.54	3,657.1	-1,445.1	-295.0	1,474.9	0.00	0.00	0.00
4,040.0	28.35	191.54	3,692.3	-1,463.7	-298.8	1,493.9	0.00	0.00	0.00
4,080.0	28.35	191.54	3,727.5	-1,482.4	-302.6	1,512.9	0.00	0.00	0.00
4,120.0	28.35	191.54	3,762.7	-1,501.0	-306.4	1,531.9	0.00	0.00	0.00
4,160.0	28.35	191.54	3,797.9	-1,519.6	-310.2	1,550.9	0.00	0.00	0.00

Database:	Landmark	Local Co-ordinate Reference:	Well Jones 2-12-4-60
Company:	Firststrike Energy	TVD Reference:	RKB @ 4394.0ft (EST KB 13')
Project:	SEC.2-T4N-R60W	MD Reference:	RKB @ 4394.0ft (EST KB 13')
Site:	Jones 2-12-4-60 Pad Sec.2-T4N-R60W	North Reference:	True
Well:	Jones 2-12-4-60	Survey Calculation Method:	Minimum Curvature
Wellbore:	Wellbore #1		
Design:	Plan #4 (6-21-12)		

Planned Survey									
Measured Depth (ft)	Inclination (°)	Azimuth (°)	Vertical Depth (ft)	+N/-S (ft)	+E/-W (ft)	Vertical Section (ft)	Dogleg Rate (°/100ft)	Build Rate (°/100ft)	Turn Rate (°/100ft)
4,200.0	28.35	191.54	3,833.1	-1,538.2	-314.0	1,569.9	0.00	0.00	0.00
4,240.0	28.35	191.54	3,868.3	-1,556.8	-317.8	1,588.9	0.00	0.00	0.00
4,280.0	28.35	191.54	3,903.5	-1,575.4	-321.6	1,607.9	0.00	0.00	0.00
4,320.0	28.35	191.54	3,938.7	-1,594.0	-325.4	1,626.9	0.00	0.00	0.00
4,360.0	28.35	191.54	3,973.9	-1,612.6	-329.2	1,645.9	0.00	0.00	0.00
4,400.0	28.35	191.54	4,009.1	-1,631.2	-333.0	1,664.9	0.00	0.00	0.00
4,440.0	28.35	191.54	4,044.3	-1,649.8	-336.8	1,683.9	0.00	0.00	0.00
4,480.0	28.35	191.54	4,079.6	-1,668.5	-340.6	1,702.9	0.00	0.00	0.00
4,520.0	28.35	191.54	4,114.8	-1,687.1	-344.4	1,721.9	0.00	0.00	0.00
4,560.0	28.35	191.54	4,150.0	-1,705.7	-348.2	1,740.8	0.00	0.00	0.00
4,600.0	28.35	191.54	4,185.2	-1,724.3	-352.0	1,759.8	0.00	0.00	0.00
4,640.0	28.35	191.54	4,220.4	-1,742.9	-355.8	1,778.8	0.00	0.00	0.00
4,680.0	28.35	191.54	4,255.6	-1,761.5	-359.6	1,797.8	0.00	0.00	0.00
4,720.0	28.35	191.54	4,290.8	-1,780.1	-363.4	1,816.8	0.00	0.00	0.00
4,760.0	28.35	191.54	4,326.0	-1,798.7	-367.2	1,835.8	0.00	0.00	0.00
4,800.0	28.35	191.54	4,361.2	-1,817.3	-370.9	1,854.8	0.00	0.00	0.00
4,840.0	28.35	191.54	4,396.4	-1,836.0	-374.7	1,873.8	0.00	0.00	0.00
4,880.0	28.35	191.54	4,431.6	-1,854.6	-378.5	1,892.8	0.00	0.00	0.00
4,920.0	28.35	191.54	4,466.8	-1,873.2	-382.3	1,911.8	0.00	0.00	0.00
4,960.0	28.35	191.54	4,502.0	-1,891.8	-386.1	1,930.8	0.00	0.00	0.00
5,000.0	28.35	191.54	4,537.2	-1,910.4	-389.9	1,949.8	0.00	0.00	0.00
5,040.0	28.35	191.54	4,572.4	-1,929.0	-393.7	1,968.8	0.00	0.00	0.00
5,080.0	28.35	191.54	4,607.6	-1,947.6	-397.5	1,987.8	0.00	0.00	0.00
5,120.0	28.35	191.54	4,642.8	-1,966.2	-401.3	2,006.8	0.00	0.00	0.00
5,160.0	28.35	191.54	4,678.0	-1,984.8	-405.1	2,025.8	0.00	0.00	0.00
5,200.0	28.35	191.54	4,713.2	-2,003.4	-408.9	2,044.8	0.00	0.00	0.00
5,240.0	28.35	191.54	4,748.4	-2,022.1	-412.7	2,063.7	0.00	0.00	0.00
5,280.0	28.35	191.54	4,783.6	-2,040.7	-416.5	2,082.7	0.00	0.00	0.00
5,320.0	28.35	191.54	4,818.8	-2,059.3	-420.3	2,101.7	0.00	0.00	0.00
5,360.0	28.35	191.54	4,854.0	-2,077.9	-424.1	2,120.7	0.00	0.00	0.00
5,400.0	28.35	191.54	4,889.2	-2,096.5	-427.9	2,139.7	0.00	0.00	0.00
5,440.0	28.35	191.54	4,924.4	-2,115.1	-431.7	2,158.7	0.00	0.00	0.00
5,480.0	28.35	191.54	4,959.6	-2,133.7	-435.5	2,177.7	0.00	0.00	0.00
5,520.0	28.35	191.54	4,994.8	-2,152.3	-439.3	2,196.7	0.00	0.00	0.00
5,560.0	28.35	191.54	5,030.0	-2,170.9	-443.1	2,215.7	0.00	0.00	0.00
5,600.0	28.35	191.54	5,065.2	-2,189.6	-446.9	2,234.7	0.00	0.00	0.00
5,640.0	28.35	191.54	5,100.4	-2,208.2	-450.7	2,253.7	0.00	0.00	0.00
5,680.0	28.35	191.54	5,135.6	-2,226.8	-454.5	2,272.7	0.00	0.00	0.00
5,720.0	28.35	191.54	5,170.8	-2,245.4	-458.3	2,291.7	0.00	0.00	0.00
5,760.0	28.35	191.54	5,206.0	-2,264.0	-462.1	2,310.7	0.00	0.00	0.00
5,800.0	28.35	191.54	5,241.2	-2,282.6	-465.9	2,329.7	0.00	0.00	0.00
5,840.0	28.35	191.54	5,276.4	-2,301.2	-469.7	2,348.7	0.00	0.00	0.00
5,880.0	28.35	191.54	5,311.6	-2,319.8	-473.5	2,367.7	0.00	0.00	0.00
5,920.0	28.35	191.54	5,346.8	-2,338.4	-477.3	2,386.6	0.00	0.00	0.00
5,960.0	28.35	191.54	5,382.0	-2,357.0	-481.1	2,405.6	0.00	0.00	0.00
6,000.0	28.35	191.54	5,417.3	-2,375.7	-484.9	2,424.6	0.00	0.00	0.00
6,040.0	28.35	191.54	5,452.5	-2,394.3	-488.7	2,443.6	0.00	0.00	0.00
6,080.0	28.35	191.54	5,487.7	-2,412.9	-492.5	2,462.6	0.00	0.00	0.00
6,120.0	28.35	191.54	5,522.9	-2,431.5	-496.3	2,481.6	0.00	0.00	0.00
6,160.0	28.35	191.54	5,558.1	-2,450.1	-500.1	2,500.6	0.00	0.00	0.00
6,200.0	28.35	191.54	5,593.3	-2,468.7	-503.9	2,519.6	0.00	0.00	0.00
6,240.0	28.35	191.54	5,628.5	-2,487.3	-507.7	2,538.6	0.00	0.00	0.00
6,280.0	28.35	191.54	5,663.7	-2,505.9	-511.5	2,557.6	0.00	0.00	0.00
6,320.0	28.35	191.54	5,698.9	-2,524.5	-515.3	2,576.6	0.00	0.00	0.00

Database:	Landmark	Local Co-ordinate Reference:	Well Jones 2-12-4-60
Company:	Firststrike Energy	TVD Reference:	RKB @ 4394.0ft (EST KB 13')
Project:	SEC.2-T4N-R60W	MD Reference:	RKB @ 4394.0ft (EST KB 13')
Site:	Jones 2-12-4-60 Pad Sec.2-T4N-R60W	North Reference:	True
Well:	Jones 2-12-4-60	Survey Calculation Method:	Minimum Curvature
Wellbore:	Wellbore #1		
Design:	Plan #4 (6-21-12)		

Planned Survey									
Measured Depth (ft)	Inclination (°)	Azimuth (°)	Vertical Depth (ft)	+N/-S (ft)	+E/-W (ft)	Vertical Section (ft)	Dogleg Rate (°/100ft)	Build Rate (°/100ft)	Turn Rate (°/100ft)
6,360.0	28.35	191.54	5,734.1	-2,543.1	-519.1	2,595.6	0.00	0.00	0.00
6,400.0	28.35	191.54	5,769.3	-2,561.8	-522.9	2,614.6	0.00	0.00	0.00
6,440.0	28.35	191.54	5,804.5	-2,580.4	-526.7	2,633.6	0.00	0.00	0.00
6,480.0	28.35	191.54	5,839.7	-2,599.0	-530.5	2,652.6	0.00	0.00	0.00
6,520.0	28.35	191.54	5,874.9	-2,617.6	-534.3	2,671.6	0.00	0.00	0.00
6,560.0	28.35	191.54	5,910.1	-2,636.2	-538.1	2,690.6	0.00	0.00	0.00
6,600.0	28.35	191.54	5,945.3	-2,654.8	-541.9	2,709.5	0.00	0.00	0.00
6,610.4	28.35	191.54	5,954.5	-2,659.7	-542.9	2,714.5	0.00	0.00	0.00
6,640.0	27.76	191.54	5,980.6	-2,673.3	-545.7	2,728.4	2.00	-2.00	0.00
6,680.0	26.96	191.54	6,016.1	-2,691.3	-549.3	2,746.8	2.00	-2.00	0.00
6,720.0	26.16	191.54	6,051.9	-2,708.8	-552.9	2,764.7	2.00	-2.00	0.00
6,760.0	25.36	191.54	6,087.9	-2,725.9	-556.4	2,782.1	2.00	-2.00	0.00
6,800.0	24.56	191.54	6,124.2	-2,742.4	-559.8	2,798.9	2.00	-2.00	0.00
6,805.3	24.45	191.54	6,129.0	-2,744.6	-560.2	2,801.1	2.00	-2.00	0.00
D-SAND									
6,840.0	23.76	191.54	6,160.7	-2,758.4	-563.0	2,815.3	2.00	-2.00	0.00
6,880.0	22.96	191.54	6,197.4	-2,774.0	-566.2	2,831.2	2.00	-2.00	0.00
6,920.0	22.16	191.54	6,234.3	-2,789.0	-569.3	2,846.5	2.00	-2.00	0.00
6,960.0	21.36	191.54	6,271.5	-2,803.5	-572.2	2,861.3	2.00	-2.00	0.00
7,000.0	20.56	191.54	6,308.8	-2,817.5	-575.1	2,875.6	2.00	-2.00	0.00
7,027.9	20.00	191.54	6,335.0	-2,827.0	-577.0	2,885.3	2.00	-2.00	0.00

Casing Points					
Measured Depth (ft)	Vertical Depth (ft)	Name	Casing Diameter (")	Hole Diameter (")	
500.6	500.0	8 5/8"	8-5/8	12-1/4	

Formations					
Measured Depth (ft)	Vertical Depth (ft)	Name	Lithology	Dip (°)	Dip Direction (°)
6,805.3	6,129.0	D-SAND		0.00	