

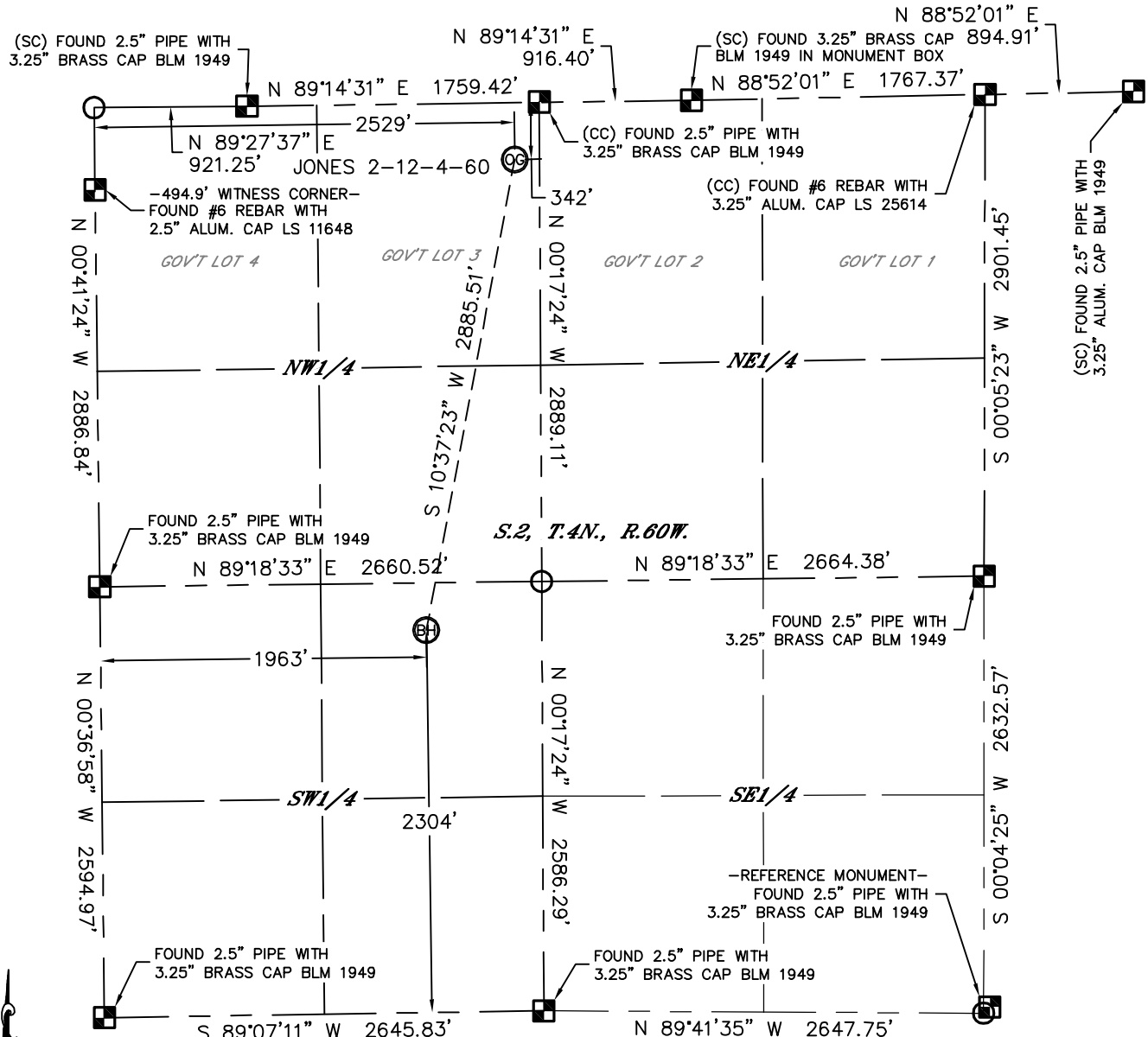


Lat40°, Inc. 1635 Foxtrail Drive, Suite 325 Loveland, CO 970-776-3321

# WELL LOCATION CERTIFICATE

THIS MAP DOES NOT REPRESENT A BOUNDARY SURVEY

SECTION: 2  
TOWNSHIP: 4N  
RANGE: 60W



In accordance with a request from Duane Russell with JAMES C KARO ASSOCIATES Lat40°, Inc. has determined the surface location of the JONES 2-12-4-60 to be 342' from the NORTH line and 2529' from the WEST line and the bottom hole to be 2304' from the SOUTH line and 1963' from the WEST line as measured at right angles from the section lines of Section 2, Township 4 North, Range 60 West of the Sixth Principal Meridian, County of Morgan, State of Colorado.

I hereby state that this Well Location Certificate was prepared by me, or under my direct supervision, that the fieldwork was completed on 1/20/12, for and on behalf of JAMES C KARO ASSOCIATES. That this is not a Land Survey Plat or an Improvement Survey Plat, and that it is not to be relied upon for establishment of fence, building, or other future improvement lines.

## NOTE:

- 1) Bearings shown are Grid Bearings of the Colorado State Plane Coordinate System, North Zone, North American Datum 1983/2007. The lineal dimensions as contained herein are based upon the "U.S. Survey Foot."
- 2) Ground elevations are based on an observed GPS elevation (NAVD 1988 DATUM).
- 3) IMPROVEMENTS: See LOCATION DRAWING for all visible improvements within 400' of disturbed area.
- 4) SURFACE USE: PASTURE
- 5) INSTRUMENT OPERATOR: ADAM KELLY

## SURFACE LOCATION

LATITUDE: 40.34874°N  
LONGITUDE: 104.06499°W  
PDOP: 1.2  
ELEV: 4381'  
1/4,1/4: NE1/4NW1/4 (GOV'T LOT 3)  
NEAREST PROPERTY LINE: 150' E

## BOTTOM HOLE

LATITUDE: 40.34098°N  
LONGITUDE: 104.06706°W

## NOTE

According to Colorado law, you must commence any legal action based upon any defect in this W.L.C. within three years after you discover such defect. In no event, may any action based upon any defect in this survey be commenced more than ten years after the date of the certificate shown hereon. (13-80-105 C.R.S.)

## LEGEND

- = ALIQUOT MONUMENT AS DESCRIBED
- = CALCULATED POSITION

Brian T. Brinkman—On behalf of Lat40°, Inc.  
Colorado Licensed Professional  
Land Surveyor No. 38175  
DATE: rev 3/26/2012  
PROJECT#: 2012015

