

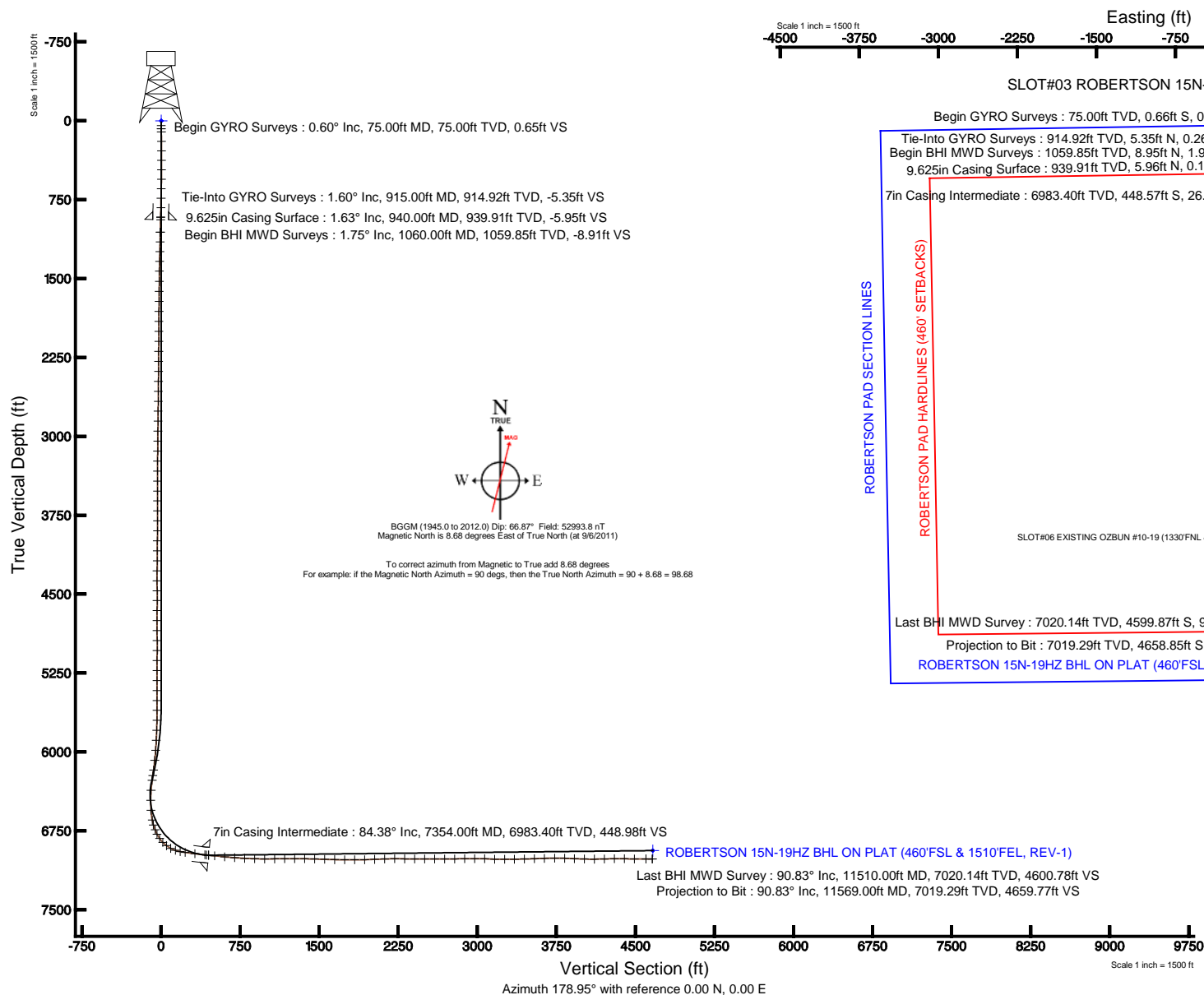
Anadarko
Petroleum Corporation



Plot reference wellpath is ROBERTSON 15N-19HZ (REV-D.0) PWP

True vertical depths are referenced to XTREME 6 (RKB)	Grid System: NAD83 / Lambert Colorado SP, Northern Zone (501), US feet
Measured depths are referenced to XTREME 6 (RKB)	North Reference: True north
XTREME 6 (RKB) to Mean Sea Level: 4952 feet	Scale: True distance
Mean Sea Level to Mud line (At Slot: SLOT#03 ROBERTSON 15N-19HZ (151FNL & 1544FEL, SEC.19): 0 foot	Depths are in feet
Coordinates are in feet referenced to Slot	Created by: wlsjef02 on 1/5/2012

PvA





Actual Wellpath Report

ROBERTSON 15N-19HZ AWP

Page 1 of 5



REFERENCE WELLPATH IDENTIFICATION

Operator	ANADARKO E&P COMPANY LP	Slot	SLOT#03 ROBERTSON 15N-19HZ (151'FNL & 1544'FEL, SEC.19)
Area	COLORADO	Well	ROBERTSON 15N-19HZ
Field	WELD COUNTY (KERR MCGEE)	Wellbore	ROBERTSON 15N-19HZ AWB
Facility	SEC.19-T2N-R64W		

REPORT SETUP INFORMATION

Projection System	NAD83 / Lambert Colorado SP, Northern Zone (501), US feet	Software System	WellArchitect® 3.0.0
North Reference	True	User	Wilsjef02
Scale	0.999959	Report Generated	1/6/2012 at 8:46:00 AM
Convergence at slot	0.59° East	Database/Source file	WA_ANADARKO/ROBERTSON_15N-19HZ_AWB.xml

WELLPATH LOCATION

	Local coordinates		Grid coordinates		Geographic coordinates	
	North[ft]	East[ft]	Easting[US ft]	Northing[US ft]	Latitude	Longitude
Slot Location	-0.20	-60.01	3254383.29	1291784.58	40°07'50.736"N	104°35'24.814"W
Facility Reference Pt			3254443.30	1291785.40	40°07'50.738"N	104°35'24.041"W
Field Reference Pt			3197771.84	1268891.29	40°04'09.600"N	104°47'36.000"W

WELLPATH DATUM

Calculation method	Minimum curvature	XTREME 6 (RKB) to Facility Vertical Datum	4952.00ft
Horizontal Reference Pt	Slot	XTREME 6 (RKB) to Mean Sea Level	4952.00ft
Vertical Reference Pt	XTREME 6 (RKB)	XTREME 6 (RKB) to Mud Line at Slot (SLOT#03 ROBERTSON 15N-19HZ (151'FNL & 1544'FEL, SEC.19))	4952.00ft
MD Reference Pt	XTREME 6 (RKB)	Section Origin	N 0.00, E 0.00 ft
Field Vertical Reference	Mean Sea Level	Section Azimuth	178.95°



Actual Wellpath Report

ROBERTSON 15N-19HZ AWP

Page 2 of 5



REFERENCE WELLPATH IDENTIFICATION

Operator	ANADARKO E&P COMPANY LP	Slot	SLOT#03 ROBERTSON 15N-19HZ (151'FNL & 1544'FEL, SEC.19)
Area	COLORADO	Well	ROBERTSON 15N-19HZ
Field	WELD COUNTY (KERR MCGEE)	Wellbore	ROBERTSON 15N-19HZ AWB
Facility	SEC.19-T2N-R64W		

WELLPATH DATA (121 stations)

MD [ft]	Inclination [°]	Azimuth [°]	TVD [ft]	Vert Sect [ft]	North [ft]	East [ft]	Latitude	Longitude	DLS [°/100ft]	Comments
915.00	1.600	30.110	914.92	-5.35	5.35	-0.26	40°07'50.789"N	104°35'24.817"W	0.67	Tie-Into GYRO Surveys
1060.00	1.750	33.470	1059.85	-8.91	8.95	1.98	40°07'50.824"N	104°35'24.788"W	0.12	Begin BHI MWD Surveys
1152.00	1.320	25.140	1151.82	-11.02	11.08	3.21	40°07'50.845"N	104°35'24.772"W	0.53	
1245.00	1.380	22.590	1244.79	-13.01	13.08	4.09	40°07'50.865"N	104°35'24.761"W	0.09	
1337.00	1.450	24.640	1336.77	-15.07	15.16	5.00	40°07'50.886"N	104°35'24.749"W	0.09	
1429.00	0.800	15.740	1428.75	-16.73	16.84	5.66	40°07'50.902"N	104°35'24.741"W	0.73	
1528.00	0.880	6.450	1527.74	-18.15	18.26	5.93	40°07'50.916"N	104°35'24.737"W	0.16	
1623.00	0.980	8.640	1622.73	-19.67	19.79	6.14	40°07'50.932"N	104°35'24.735"W	0.11	
1718.00	0.900	294.780	1717.72	-20.80	20.91	5.58	40°07'50.943"N	104°35'24.742"W	1.19	
1813.00	0.890	299.020	1812.70	-21.49	21.58	4.26	40°07'50.949"N	104°35'24.759"W	0.07	
1908.00	0.740	307.330	1907.69	-22.25	22.31	3.13	40°07'50.956"N	104°35'24.773"W	0.20	
2002.00	0.650	298.400	2001.69	-22.88	22.93	2.18	40°07'50.963"N	104°35'24.786"W	0.15	
2098.00	0.560	305.170	2097.68	-23.43	23.46	1.31	40°07'50.968"N	104°35'24.797"W	0.12	
2192.00	0.600	324.310	2191.68	-24.11	24.12	0.65	40°07'50.974"N	104°35'24.805"W	0.21	
2287.00	0.710	307.460	2286.67	-24.88	24.88	-0.11	40°07'50.982"N	104°35'24.815"W	0.23	
2382.00	0.660	317.220	2381.66	-25.66	25.64	-0.95	40°07'50.989"N	104°35'24.826"W	0.13	
2477.00	0.760	314.840	2476.66	-26.52	26.49	-1.76	40°07'50.998"N	104°35'24.836"W	0.11	
2572.00	1.050	300.490	2571.65	-27.42	27.37	-2.96	40°07'51.007"N	104°35'24.852"W	0.39	
2667.00	1.060	300.890	2666.63	-28.34	28.27	-4.46	40°07'51.015"N	104°35'24.871"W	0.01	
2762.00	0.880	335.960	2761.62	-29.48	29.38	-5.52	40°07'51.026"N	104°35'24.885"W	0.64	
2857.00	0.680	329.600	2856.61	-30.64	30.54	-6.10	40°07'51.038"N	104°35'24.892"W	0.23	
2952.00	0.680	332.880	2951.60	-31.64	31.53	-6.64	40°07'51.048"N	104°35'24.899"W	0.04	
3047.00	0.740	353.560	3046.59	-32.76	32.64	-6.97	40°07'51.059"N	104°35'24.903"W	0.28	
3141.00	1.050	72.350	3140.59	-33.61	33.50	-6.21	40°07'51.067"N	104°35'24.894"W	1.24	
3236.00	1.400	53.840	3235.56	-34.53	34.45	-4.45	40°07'51.076"N	104°35'24.871"W	0.55	
3331.00	1.540	75.170	3330.53	-35.50	35.46	-2.28	40°07'51.086"N	104°35'24.843"W	0.59	
3426.00	1.440	101.820	3425.50	-35.54	35.54	0.13	40°07'51.087"N	104°35'24.812"W	0.73	
3521.00	0.220	128.480	3520.49	-35.15	35.19	1.44	40°07'51.084"N	104°35'24.795"W	1.31	
3615.00	0.100	104.580	3614.49	-35.02	35.05	1.66	40°07'51.082"N	104°35'24.792"W	0.14	
3710.00	0.190	94.410	3709.49	-34.98	35.02	1.90	40°07'51.082"N	104°35'24.789"W	0.10	
3805.00	0.280	23.810	3804.49	-35.17	35.22	2.15	40°07'51.084"N	104°35'24.786"W	0.30	
3900.00	0.430	30.480	3899.49	-35.69	35.74	2.42	40°07'51.089"N	104°35'24.782"W	0.16	
3995.00	0.500	24.300	3994.48	-36.37	36.42	2.77	40°07'51.096"N	104°35'24.778"W	0.09	
4090.00	0.670	39.910	4089.48	-37.16	37.23	3.30	40°07'51.104"N	104°35'24.771"W	0.24	
4184.00	0.670	40.280	4183.47	-37.99	38.07	4.01	40°07'51.112"N	104°35'24.762"W	0.00	
4279.00	0.870	39.190	4278.46	-38.96	39.05	4.82	40°07'51.122"N	104°35'24.752"W	0.21	
4374.00	0.330	153.370	4373.46	-39.26	39.37	5.40	40°07'51.125"N	104°35'24.744"W	1.10	
4469.00	0.440	143.130	4468.46	-38.72	38.83	5.74	40°07'51.120"N	104°35'24.740"W	0.14	
4563.00	0.570	70.580	4562.46	-38.57	38.70	6.40	40°07'51.118"N	104°35'24.731"W	0.65	
4658.00	0.560	41.540	4657.45	-39.06	39.20	7.15	40°07'51.123"N	104°35'24.722"W	0.30	
4753.00	0.220	267.450	4752.45	-39.40	39.54	7.28	40°07'51.127"N	104°35'24.720"W	0.77	
4848.00	0.610	251.430	4847.45	-39.24	39.37	6.62	40°07'51.125"N	104°35'24.728"W	0.42	
4943.00	0.990	250.510	4942.44	-38.83	38.94	5.36	40°07'51.121"N	104°35'24.745"W	0.40	
5038.00	1.080	276.500	5037.42	-38.69	38.76	3.70	40°07'51.119"N	104°35'24.766"W	0.50	
5133.00	1.130	299.910	5132.41	-39.29	39.33	2.00	40°07'51.125"N	104°35'24.788"W	0.47	
5228.00	0.300	330.310	5227.40	-39.99	40.02	1.06	40°07'51.131"N	104°35'24.800"W	0.93	
5323.00	0.230	258.150	5322.40	-40.17	40.19	0.75	40°07'51.133"N	104°35'24.804"W	0.33	
5418.00	0.100	258.530	5417.40	-40.12	40.14	0.49	40°07'51.133"N	104°35'24.807"W	0.14	
5513.00	0.250	181.570	5512.40	-39.90	39.91	0.40	40°07'51.130"N	104°35'24.808"W	0.26	
5607.00	0.130	338.190	5606.40	-39.79	39.81	0.35	40°07'51.129"N	104°35'24.809"W	0.40	
5702.00	1.030	9.940	5701.39	-40.73	40.75	0.46	40°07'51.139"N	104°35'24.808"W	0.97	
5797.00	1.720	9.470	5796.36	-42.97	43.00	0.84	40°07'51.161"N	104°35'24.803"W	0.73	
5892.00	3.050	4.970	5891.28	-46.89	46.92	1.30	40°07'51.200"N	104°35'24.797"W	1.41	
5987.00	4.410	6.080	5986.07	-53.03	53.07	1.90	40°07'51.260"N	104°35'24.789"W	1.43	
6082.00	5.940	7.420	6080.68	-61.51	61.58	2.92	40°07'51.345"N	104°35'24.776"W	1.62	
6177.00	7.690	4.280	6175.01	-72.70	72.79	4.03	40°07'51.455"N	104°35'24.762"W	1.88	
6229.00	8.430	3.610	6226.50	-79.97	80.06	4.53	40°07'51.527"N	104°35'24.755"W	1.43	
6275.00	8.220	2.810	6272.01	-86.61	86.71	4.91	40°07'51.593"N	104°35'24.750"W	0.52	
6370.00	4.300	24.600	6366.44	-96.60	96.74	6.72	40°07'51.692"N	104°35'24.727"W	4.75	
6465.00	0.190	219.720	6461.35	-99.69	99.86	8.11	40°07'51.723"N	104°35'24.709"W	4.72	



Actual Wellpath Report

ROBERTSON 15N-19HZ AWP

Page 3 of 5



REFERENCE WELLPATH IDENTIFICATION

Operator	ANADARKO E&P COMPANY LP	Slot	SLOT#03 ROBERTSON 15N-19HZ (151'FNL & 1544'FEL, SEC.19)
Area	COLORADO	Well	ROBERTSON 15N-19HZ
Field	WELD COUNTY (KERR MCGEE)	Wellbore	ROBERTSON 15N-19HZ AWB
Facility	SEC.19-T2N-R64W		

WELLPATH DATA (121 stations) † = interpolated/extrapolated station

MD [ft]	Inclination [°]	Azimuth [°]	TVD [ft]	Vert Sect [ft]	North [ft]	East [ft]	Latitude	Longitude	DLS [°/100ft]	Comments
6560.00	3.100	166.320	6556.30	-97.07	97.24	8.61	40°07'51.697"N	104°35'24.703"W	3.15	
6655.00	11.480	166.310	6650.45	-85.32	85.54	11.46	40°07'51.581"N	104°35'24.666"W	8.82	
6702.00	17.400	167.950	6695.95	-73.84	74.11	14.04	40°07'51.468"N	104°35'24.633"W	12.62	
6750.00	21.200	169.250	6741.24	-58.24	58.56	17.16	40°07'51.315"N	104°35'24.593"W	7.97	
6797.00	27.090	168.350	6784.11	-39.33	39.71	20.91	40°07'51.128"N	104°35'24.544"W	12.56	
6845.00	35.120	170.120	6825.18	-14.90	15.37	25.49	40°07'50.888"N	104°35'24.485"W	16.84	
6893.00	44.500	172.440	6862.01	15.53	-14.98	30.08	40°07'50.588"N	104°35'24.426"W	19.78	
6940.00	52.750	176.260	6893.06	50.65	-50.04	33.48	40°07'50.241"N	104°35'24.383"W	18.58	
6987.00	61.960	180.900	6918.39	90.16	-89.55	34.37	40°07'49.851"N	104°35'24.371"W	21.28	
7035.00	70.930	182.250	6937.56	134.07	-133.48	33.15	40°07'49.417"N	104°35'24.387"W	18.86	
7082.00	80.090	182.580	6949.30	179.44	-178.90	31.23	40°07'48.968"N	104°35'24.412"W	19.50	
7130.00	81.670	182.650	6956.91	226.74	-226.24	29.07	40°07'48.500"N	104°35'24.439"W	3.29	
7225.00	82.920	181.350	6969.65	320.74	-320.32	25.78	40°07'47.571"N	104°35'24.482"W	1.89	
7320.00	84.400	178.380	6980.14	415.14	-414.73	26.01	40°07'46.638"N	104°35'24.479"W	3.48	
7334.00	84.610	179.730	6981.48	429.07	-428.66	26.24	40°07'46.500"N	104°35'24.476"W	9.72	
7354.00†	84.382	179.697	6983.40	448.98	-448.57	26.34	40°07'46.303"N	104°35'24.475"W	1.15	7" Casing Point
7413.00	83.710	179.600	6989.52	507.65	-507.25	26.70	40°07'45.723"N	104°35'24.470"W	1.15	
7508.00	84.210	178.970	6999.52	602.12	-601.72	27.88	40°07'44.790"N	104°35'24.455"W	0.84	
7603.00	85.670	177.410	7007.90	696.74	-696.29	30.87	40°07'43.855"N	104°35'24.416"W	2.24	
7698.00	87.440	178.970	7013.60	791.55	-791.07	33.86	40°07'42.919"N	104°35'24.378"W	2.48	
7793.00	87.970	177.730	7017.41	886.47	-885.95	36.60	40°07'41.981"N	104°35'24.342"W	1.42	
7888.00	90.030	180.450	7019.07	981.44	-980.91	38.10	40°07'41.043"N	104°35'24.323"W	3.59	
7983.00	90.800	179.650	7018.38	1076.42	-1075.90	38.02	40°07'40.104"N	104°35'24.324"W	1.17	
8078.00	89.690	177.540	7017.97	1171.41	-1170.87	40.35	40°07'39.165"N	104°35'24.294"W	2.51	
8173.00	90.460	180.790	7017.85	1266.40	-1265.84	41.73	40°07'38.227"N	104°35'24.276"W	3.52	
8268.00	89.290	180.510	7018.05	1361.35	-1360.84	40.66	40°07'37.288"N	104°35'24.290"W	1.27	
8363.00	88.240	179.710	7020.10	1456.31	-1455.81	40.47	40°07'36.350"N	104°35'24.293"W	1.39	
8458.00	88.150	181.510	7023.09	1551.22	-1550.76	39.46	40°07'35.411"N	104°35'24.306"W	1.90	
8553.00	88.580	180.840	7025.81	1646.11	-1645.70	37.51	40°07'34.473"N	104°35'24.331"W	0.84	
8648.00	89.350	178.620	7027.52	1741.08	-1740.67	37.96	40°07'33.534"N	104°35'24.325"W	2.47	
8743.00	90.060	178.560	7028.01	1836.07	-1835.64	40.30	40°07'32.596"N	104°35'24.295"W	0.75	
8838.00	91.970	178.440	7026.33	1931.05	-1930.59	42.79	40°07'31.658"N	104°35'24.263"W	2.01	
8933.00	91.900	177.920	7023.12	2025.99	-2025.49	45.80	40°07'30.720"N	104°35'24.224"W	0.55	
9027.00	92.100	177.540	7019.84	2119.91	-2119.36	49.52	40°07'29.792"N	104°35'24.176"W	0.46	
9122.00	90.090	176.670	7018.02	2214.84	-2214.21	54.32	40°07'28.855"N	104°35'24.114"W	2.31	
9217.00	89.250	175.640	7018.57	2309.72	-2308.99	60.69	40°07'27.918"N	104°35'24.032"W	1.40	
9312.00	89.320	175.850	7019.76	2404.56	-2403.73	67.74	40°07'26.982"N	104°35'23.942"W	0.23	
9407.00	90.860	176.960	7019.61	2499.46	-2498.53	73.69	40°07'26.045"N	104°35'23.865"W	2.00	
9502.00	90.120	179.020	7018.80	2594.44	-2593.47	77.03	40°07'25.107"N	104°35'23.822"W	2.30	
9597.00	89.460	178.620	7019.14	2689.44	-2688.45	78.98	40°07'24.169"N	104°35'23.797"W	0.81	
9692.00	90.910	175.190	7018.84	2784.36	-2783.29	84.11	40°07'23.231"N	104°35'23.731"W	3.92	
9787.00	90.500	176.590	7017.67	2879.22	-2878.04	90.92	40°07'22.295"N	104°35'23.643"W	1.54	
9882.00	90.520	177.810	7016.82	2974.17	-2972.92	95.56	40°07'21.357"N	104°35'23.583"W	1.28	
9977.00	87.960	177.740	7018.08	3069.13	-3067.83	99.25	40°07'20.419"N	104°35'23.536"W	2.70	
10072.00	87.940	178.360	7021.48	3164.06	-3162.71	102.48	40°07'19.482"N	104°35'23.494"W	0.65	
10167.00	90.180	182.740	7023.04	3258.98	-3257.67	101.56	40°07'18.543"N	104°35'23.506"W	5.18	
10261.00	91.000	180.860	7022.07	3352.85	-3351.61	98.61	40°07'17.615"N	104°35'23.544"W	2.18	
10356.00	91.440	180.580	7020.05	3447.79	-3446.58	97.42	40°07'16.677"N	104°35'23.560"W	0.55	
10451.00	92.330	181.580	7016.92	3542.67	-3541.51	95.63	40°07'15.738"N	104°35'23.583"W	1.41	
10546.00	91.410	179.990	7013.82	3637.56	-3636.45	94.33	40°07'14.800"N	104°35'23.599"W	1.93	
10641.00	90.860	178.680	7011.94	3732.54	-3731.42	95.43	40°07'13.862"N	104°35'23.585"W	1.50	
10736.00	87.660	179.660	7013.17	3827.52	-3826.39	96.81	40°07'12.923"N	104°35'23.567"W	3.52	
10830.00	87.930	179.500	7016.79	3921.44	-3920.31	97.50	40°07'11.995"N	104°35'23.559"W	0.33	
10925.00	87.920	181.590	7020.23	4016.34	-4015.24	96.59	40°07'11.057"N	104°35'23.570"W	2.20	
11020.00	90.890	181.700	7021.21	4111.22	-4110.19	93.87	40°07'10.119"N	104°35'23.605"W	3.13	
11115.00	91.230	182.740	7019.45	4206.05	-4205.10	90.19	40°07'09.181"N	104°35'23.653"W	1.15	
11210.00	91.320	181.220	7017.34	4300.89	-4300.02	86.91	40°07'08.243"N	104°35'23.695"W	1.60	
11305.00	88.270	179.850	7017.68	4395.84	-4395.00	86.02	40°07'07.304"N	104°35'23.706"W	3.52	
11400.00	88.980	177.400	7019.96	4490.80	-4489.94	88.30	40°07'06.366"N	104°35'23.677"W	2.68	
11510.00	90.830	178.780	7020.14	4600.78	-4599.87	91.96	40°07'05.280"N	104°35'23.630"W	2.10	Last BHI MWD Survey



Actual Wellpath Report

ROBERTSON 15N-19HZ AWP

Page 4 of 5



REFERENCE WELLPATH IDENTIFICATION

Operator	ANADARKO E&P COMPANY LP	Slot	SLOT#03 ROBERTSON 15N-19HZ (151'FNL & 1544'FEL, SEC.19)
Area	COLORADO	Well	ROBERTSON 15N-19HZ
Field	WELD COUNTY (KERR MCGEE)	Wellbore	ROBERTSON 15N-19HZ AWB
Facility	SEC.19-T2N-R64W		

WELLPATH DATA (121 stations)

MD [ft]	Inclination [°]	Azimuth [°]	TVD [ft]	Vert Sect [ft]	North [ft]	East [ft]	Latitude	Longitude	DLS [°/100ft]	Comments
11569.00	90.830	178.780	7019.29	4659.77	-4658.85	93.22	40°07'04.697"N	104°35'23.614"W	0.00	Projection to Bit

HOLE & CASING SECTIONS - Ref Wellbore: ROBERTSON 15N-19HZ AWB Ref Wellpath: ROBERTSON 15N-19HZ AWP

String/Diameter	Start MD [ft]	End MD [ft]	Interval [ft]	Start TVD [ft]	End TVD [ft]	Start N/S [ft]	Start E/W [ft]	End N/S [ft]	End E/W [ft]
12.25in Open Hole	16.00	940.00	924.00	16.00	939.91	-0.37	-0.22	5.96	0.10
9.625in Casing Surface	16.00	940.00	924.00	16.00	939.91	-0.37	-0.22	5.96	0.10
8.75in Open Hole	940.00	7385.00	6445.00	939.91	6986.53	5.96	0.10	-479.41	26.52
7in Casing Intermediate	16.00	7354.00	7338.00	16.00	6983.40	-0.37	-0.22	-448.57	26.34
6.125in Open Hole	7354.00	11569.00	4215.00	6983.40	7019.29	-448.57	26.34	-4658.85	93.22

TARGETS

Name	MD [ft]	TVD [ft]	North [ft]	East [ft]	Grid East [US ft]	Grid North [US ft]	Latitude	Longitude	Shape
ROBERTSON PAD SECTION LINES		0.00	0.36	60.12	3254443.40	1291785.56	40°07'50.740"N	104°35'24.040"W	polygon
ROBERTSON PAD HARDLINES (460' SETBACKS)		6935.00	0.36	60.12	3254443.40	1291785.56	40°07'50.740"N	104°35'24.040"W	polygon
ROBERTSON 15N-19HZ BHL ON PLAT (460'FSL & 1510'FEL, REV-1)		6940.00	-4664.79	85.27	3254516.41	1287121.11	40°07'04.638"N	104°35'23.716"W	point

WELLPATH COMPOSITION - Ref Wellbore: ROBERTSON 15N-19HZ AWB Ref Wellpath: ROBERTSON 15N-19HZ AWP

Start MD [ft]	End MD [ft]	Positional Uncertainty Model	Log Name/Comment	Wellbore
45.00	915.00	Gyrodata relative depth - Drop gyro or Multi-shot	GYRODATA SURVEYS <75-915>	ROBERTSON 15N-19HZ AWB
915.00	7334.00	NaviTrak (Standard)	BHI MWD SURVEYS 8 3/4" HOLE <1060-7334>	ROBERTSON 15N-19HZ AWB
7334.00	11510.00	NaviTrak (Standard)	BHI MWD SURVEY 6 1/8" HOLE <7413-11510>	ROBERTSON 15N-19HZ AWB
11510.00	11569.00	Blind Drilling (std)	Projection to bit	ROBERTSON 15N-19HZ AWB



Actual Wellpath Report

ROBERTSON 15N-19HZ AWP

Page 5 of 5



REFERENCE WELLPATH IDENTIFICATION

Operator	ANADARKO E&P COMPANY LP	Slot	SLOT#03 ROBERTSON 15N-19HZ (151'FNL & 1544'FEL, SEC.19)
Area	COLORADO	Well	ROBERTSON 15N-19HZ
Field	WELD COUNTY (KERR MCGEE)	Wellbore	ROBERTSON 15N-19HZ AWB
Facility	SEC.19-T2N-R64W		

WELLPATH COMMENTS

MD [ft]	Inclination [°]	Azimuth [°]	TVD [ft]	Comment
75.00	0.600	203.810	75.00	Begin GYRO Surveys
915.00	1.600	30.110	914.92	Tie-Into GYRO Surveys
1060.00	1.750	33.470	1059.85	Begin BHI MWD Surveys
7354.00	84.382	179.697	6983.40	7" Casing Point
11510.00	90.830	178.780	7020.14	Last BHI MWD Survey
11569.00	90.830	178.780	7019.29	Projection to Bit