
OXY GRAND JUNCTION EBUSINESS

**CC 697-05-67B
GRAND VALLEY
Garfield County , Colorado**

Cement Surface Casing
05-May-2012

Post Job Summary

The Road to Excellence Starts with Safety

Sold To #: 344034	Ship To #: 344034	Quote #:	Sales Order #: 9487258
Customer: OXY GRAND JUNCTION EBUSINESS	Customer Rep: VILLEGAS, ALEX		
Well Name: CC	Well #: 697-05-67B	API/UWI #: 05-045-20960	
Field: GRAND VALLEY	City (SAP): ADDISON	County/Parish: Garfield	State: Colorado
Lat: N 39.544 deg. OR N 39 deg. 32 min. 37.356 secs.	Long: W 108.246 deg. OR W -109 deg. 45 min. 12.852 secs.		
Contractor: H&P 353	Rig/Platform Name/Num: H&P 353		
Job Purpose: Cement Surface Casing			
Well Type: Development Well	Job Type: Cement Surface Casing		
Sales Person: HIMES, JEFFREY	Srv Supervisor: NICKLE, RYON	MBU ID Emp #: 454759	

Job Personnel

HES Emp Name	Exp Hrs	Emp #	HES Emp Name	Exp Hrs	Emp #	HES Emp Name	Exp Hrs	Emp #
BURKE, BRENDAN Patrick	13	487782	GOWEN, WESLEY M	13	496205	NICKLE, RYON	13	454759
WADE, LOGAN D	13	488896						

Equipment

HES Unit #	Distance-1 way	HES Unit #	Distance-1 way	HES Unit #	Distance-1 way	HES Unit #	Distance-1 way
10744549	120 mile	10744648C	120 mile	10867531	120 mile	10951249	120 mile
10989685	120 mile	10995027	120 mile	11808845	120 mile		

Job Hours

Date	On Location Hours	Operating Hours	Date	On Location Hours	Operating Hours	Date	On Location Hours	Operating Hours
5/4/12	8	1	5/5/12	5	3.5			

TOTAL	Total is the sum of each column separately							
-------	--	--	--	--	--	--	--	--

Job

Formation Name	Formation Depth (MD)	Top	Bottom	Job Type	Job depth MD	Water Depth	Perforation Depth (MD)	From	To
		0	2725	BHST	2725. ft				

Job Times

Date	Time	Time Zone
04 - May - 2012	11:30	MST
04 - May - 2012	16:00	MST
04 - May - 2012	23:01	MST
05 - May - 2012	03:24	MST
05 - May - 2012	05:00	MST

Well Data

Description	New / Used	Max pressure psig	Size in	ID in	Weight lbm/ft	Thread	Grade	Top MD ft	Bottom MD ft	Top TVD ft	Bottom TVD ft
-------------	------------	-------------------	---------	-------	---------------	--------	-------	-----------	--------------	------------	---------------

Sales/Rental/3rd Party (HES)

Description	Qty	Qty uom	Depth	Supplier
R/A DENSOMETER W/CHART RECORDER,/JOB,ZI	1	JOB		
PORT. DATA ACQUIS. W/OPTICEM RT W/HES	1	EA		
ADC (AUTO DENSITY CTRL) SYS, /JOB,ZI	1	JOB		
PLUG,CMTG,TOP,9 5/8,HWE,8.16 MIN/9.06 MA	1	EA		

Tools and Accessories

Type	Size	Qty	Make	Depth	Type	Size	Qty	Make	Depth	Type	Size	Qty	Make
Guide Shoe					Packer					Top Plug	9.625	1	HES
Float Shoe					Bridge Plug					Bottom Plug			
Float Collar					Retainer					SSR plug set			
Insert Float										Plug Container	9.625	1	HES
Stage Tool										Centralizers			

Miscellaneous Materials

Gelling Agt	Conc	Surfactant	Conc	Acid Type	Qty	Conc	%
Treatment Fld	Conc	Inhibitor	Conc	Sand Type	Size	Qty	

Fluid Data

Stage/Plug #: 1

Fluid #	Stage Type	Fluid Name	Qty	Qty uom	Mixing Density lbm/gal	Yield ft ³ /sk	Mix Fluid Gal/sk	Rate bbl/min	Total Mix Fluid Gal/sk
1	Fresh Water Spacer		10.00	bbl	8.33	.0	.0	2	
2	Gel Water Spacer		20.00	bbl	8.34	.0	.0	3	
0.25 gal/bbl		LGC-36 UC, BULK (101582749)							
3	Fresh Water Spacer		10.00	bbl	8.33	.0	.0	3	
4	HalCem Lead Cement	HALCEM (TM) SYSTEM (452986)	1160.0	sacks	12.3	2.15	11.83	6	11.83
11.83 Gal		FRESH WATER							
5	VariCem Tail Cement	VARICEM (TM) CEMENT (452009)	160.0	sacks	12.8	2.07	10.67	6	10.67
10.67 Gal		FRESH WATER							
6	Fresh Water Displacement		205.00	bbl	8.34	.0	.0	6	
Calculated Values		Pressures		Volumes					
Displacement	205.4	Shut In: Instant		Lost Returns		Cement Slurry	503	Pad	
Top Of Cement		5 Min		Cement Returns	50	Actual Displacement	205.4	Treatment	
Frac Gradient		15 Min		Spacers	40	Load and Breakdown		Total Job	748.4
Rates									
Circulating	RIG	Mixing	6	Displacement	6	Avg. Job	6		
Cement Left In Pipe	Amount	46 ft	Reason	Shoe Joint					
Frac Ring # 1 @	ID	Frac ring # 2 @	ID	Frac Ring # 3 @	ID	Frac Ring # 4 @	ID		
The Information Stated Herein Is Correct				Customer Representative Signature					

The Road to Excellence Starts with Safety

Sold To #: 344034		Ship To #: 344034		Quote #:		Sales Order #: 9487258	
Customer: OXY GRAND JUNCTION EBUSINESS				Customer Rep: VILLEGAS, ALEX			
Well Name: CC			Well #: 697-05-67B			API/UWI #: 05-045-20960	
Field: GRAND VALLEY		City (SAP): ADDISON		County/Parish: Garfield		State: Colorado	
Legal Description:							
Lat: N 39.544 deg. OR N 39 deg. 32 min. 37.356 secs.				Long: W 108.246 deg. OR W -109 deg. 45 min. 12.852 secs.			
Contractor: H&P 353			Rig/Platform Name/Num: H&P 353				
Job Purpose: Cement Surface Casing						Ticket Amount:	
Well Type: Development Well			Job Type: Cement Surface Casing				
Sales Person: HIMES, JEFFREY			Srv Supervisor: NICKLE, RYON			MBU ID Emp #: 454759	

Activity Description	Date/Time	Cht #	Rate bbl/min	Volume bbl		Pressure psig		Comments
				Stage	Total	Tubing	Casing	
Call Out	05/04/2012 11:30							
Pre-Convoy Safety Meeting	05/04/2012 13:45							ALL HES PERSONEL
Crew Leave Yard	05/04/2012 14:00							
Arrive At Loc	05/04/2012 16:00							RIG PREPARING TO RUN CASING, SPOKE WITH SAFETY SUPERVISOR ON LOCATION, OBTAINED PROPPER OXY SAFETY PERMITS, EMPLOYEE DISPOSITION SHEET AND OXY STOP CARDS.
Assessment Of Location Safety Meeting	05/04/2012 16:15							ALL HES PERSONEL
Other	05/04/2012 16:30							SPOT EQUIPMENT; 1 CEMENTERS PICKUP F-450, 1 ELITE PUMPING UNIT, 2 660 CF BULK TRANSPORTS
Pre-Rig Up Safety Meeting	05/04/2012 16:45							ALL HES PERSONELL
Rig-Up Equipment	05/04/2012 17:00							
Pre-Job Safety Meeting	05/04/2012 22:15							ALL HES PERSONEL, RIG CREW AND THIRD PARTY CONTRACTORS
Activity Description	Date/Time	Cht #	Rate bbl/min	Volume bbl		Pressure psig		Comments
				Stage	Total	Tubing	Casing	

Sold To # : 344034

Ship To # :344034

Quote # :

Sales Order # :

9487258

SUMMIT Version: 7.3.0021

Saturday, May 05, 2012 03:37:00

Start Job	05/04/2012 23:01							TP: 2725' TD: 2704' FC: 2658' SHOE: 46' OH 14.75" CASING: 9.625" 36# MUD: 9.3# **OFFLINE CEMENT JOB
Other	05/04/2012 23:01		2	2			15.0	FILL LINES
Pressure Test	05/04/2012 23:03							ALL LINES HELD PRESSURE, STALL OUT TO 1612 PSI HELD FOR APPX 30 SEC, PRESSURED UP TO 4682 PSI HELD 3 MINUTES, PRESSURE FELL TO 4636 PSI
Pump Spacer 1	05/04/2012 23:13		3	10			17.0	FRESH WATER
Pump Spacer 2	05/04/2012 23:17		3	20			68.0	GEL SPACER, 5 GAL LGC TO 20 BBLS H2O
Pump Spacer 1	05/04/2012 23:26		3	10			97.0	FRESH WATER
Pump Lead Cement	05/04/2012 23:29		6	444.1			173.0	1160 SKS, 12.3 PPG, 2.15 FT3/ SK, 11.83 GAL/SK, 7 BOXES TUFF FIBER ADDED THROUGHOUT
Pump Tail Cement	05/05/2012 01:19		6	58.9			129.0	160 SKS, 12.8 PPG, 2.07 FT3/ SK, 10.67 GAL/SK
Shutdown	05/05/2012 01:34							WASH UP ON TOP OF PLUG
Drop Top Plug	05/05/2012 01:37							UNSURE IF PLUG DROPPED, SHUTDOWN TO BREAK OFF TOP OF PLUG CONTAINER TO CHECK, COMPANY REP VERIFIED THAT PLUG DROPPED
Pump Displacement	05/05/2012 01:37		6	160			540.0	FRESH WATER
Slow Rate	05/05/2012 02:09		5	35.4			645.0	PER CO REP SLOW RATE TO 5 BBLS / MIN
Slow Rate	05/05/2012 02:15		2	10			580.0	PER CO REP, BUMP PLUG AT 2 BBLS / MIN
Bump Plug	05/05/2012 02:20						1099. 0	PLUG LANDED
Check Floats	05/05/2012 02:26							FLOATS HELD, 1.1 BBL H2O BACK
Activity Description	Date/Time	Cht #	Rate bbl/ min	Volume bbl		Pressure psig		Comments
				Stage	Total	Tubing	Casing	

Sold To # : 344034

Ship To # :344034

Quote # :

Sales Order # :

9487258

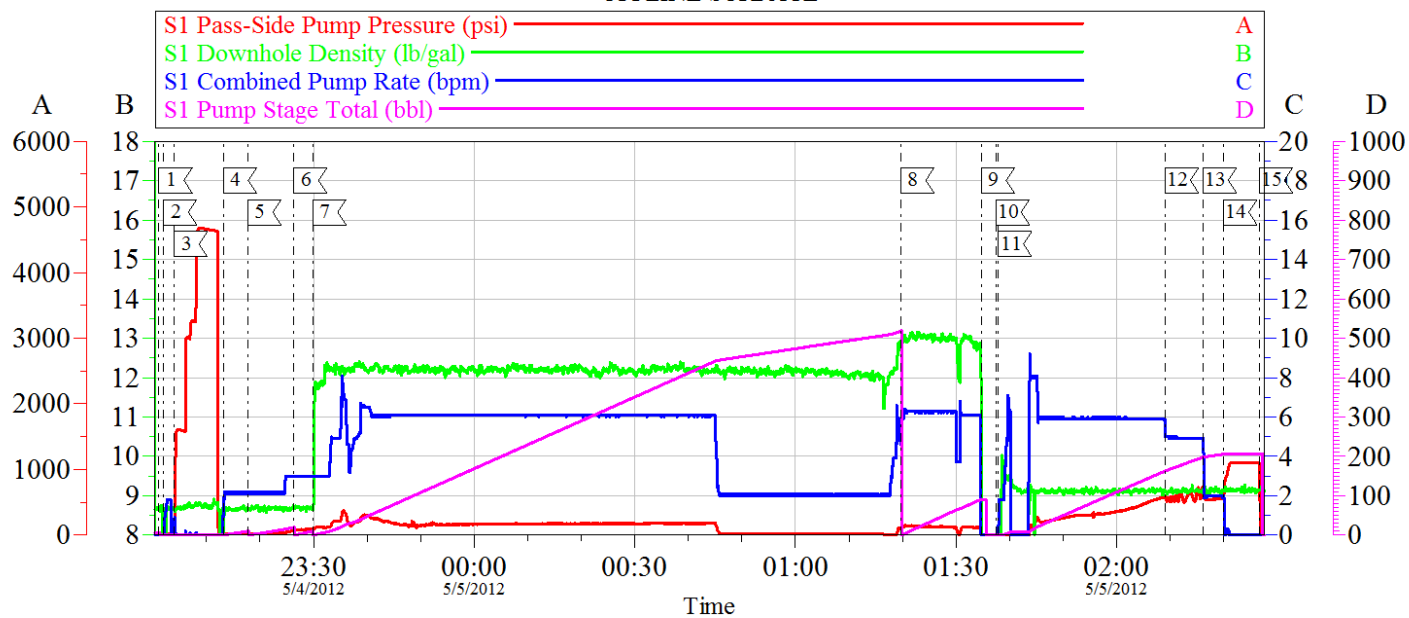
SUMMIT Version: 7.3.0021

Saturday, May 05, 2012 03:37:00

Pressure Up	05/05/2012 02:28						1596.0	CASING TEST; PRESSURE UP CASING TO 1596 PSI HOLD FOR 30 MINUTES
Release Casing Pressure	05/05/2012 03:04							
Pump Water	05/05/2012 03:15		1.5	10			238.0	PUMP TO CLEAR PARASITE LINE, 10# SUGAR MIXED WITH 10 BBLS H2O
Shutdown	05/05/2012 03:23							
End Job	05/05/2012 03:24							RETURNS 250 BBLS INTO LEAD CEMENT, GOOD RETURNS THROUGH REMAINDER OF CEMENT AND 100 BBLS INTO DISPLACEMENT, LOST RETURNS UNTIL FINAL 60 BBLS DISPLACEMENT, OFFLINE CEMENT JOB, 50 BBLS CEMENT TO SURFACE
Post-Job Safety Meeting (Pre Rig-Down)	05/05/2012 03:25							ALL HES PERSONEL
Rig-Down Equipment	05/05/2012 03:40							
Depart Location Safety Meeting	05/05/2012 04:45							ALL HES PERSONEL
Crew Leave Location	05/05/2012 05:00							THANK YOU FOR USING HALLIBURTON, RYON NICKLE AND CREW

OXY - CC 697-05-67B

OFFLINE SURFACE



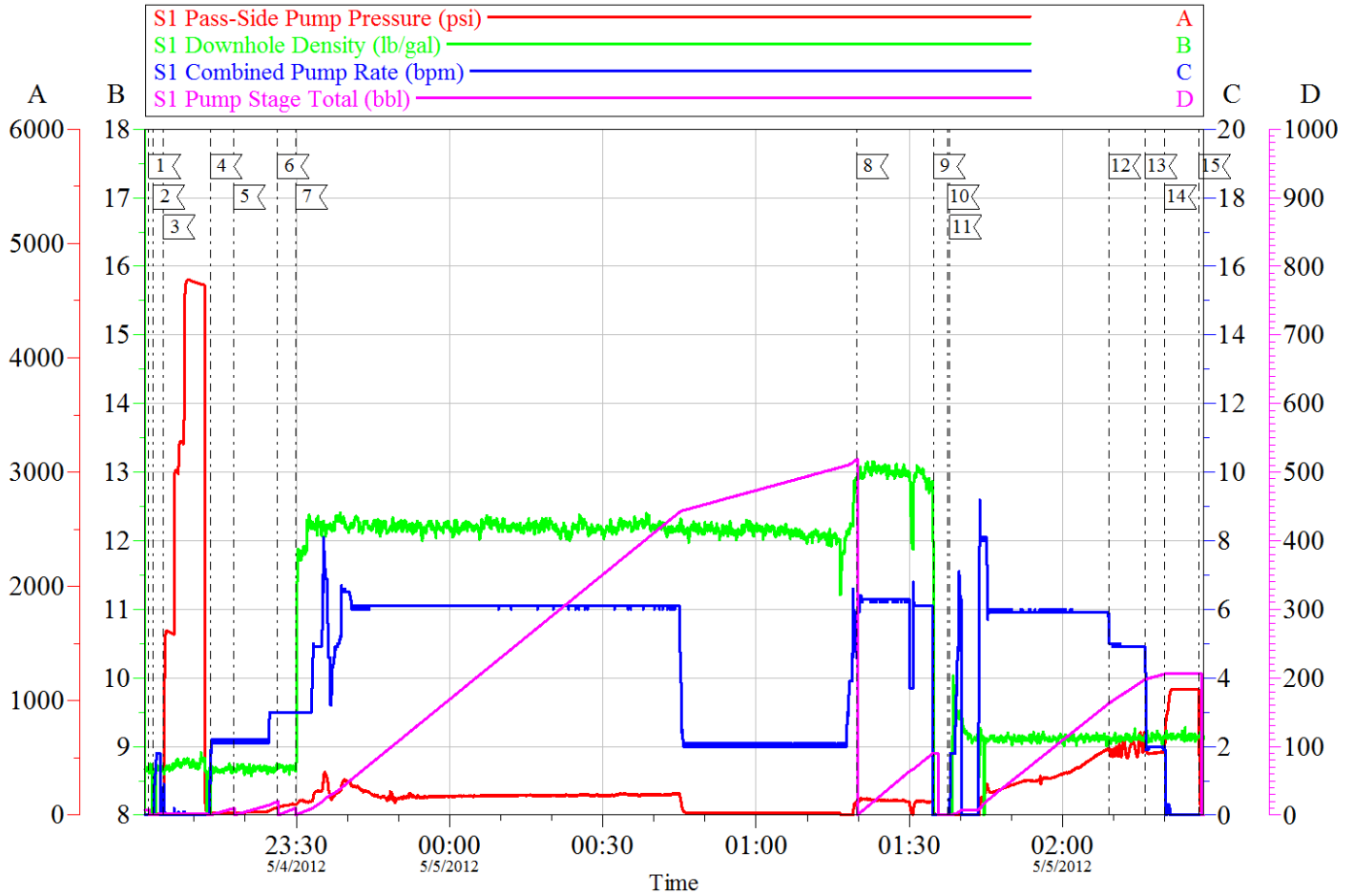
Local Event Log					
1	START JOB	5/4/2012 23:01:08	2	FILL LINES	5/4/2012 23:01:59
3	PRESSURE TEST	5/4/2012 23:03:58	4	PUMP H2O SPACER	5/4/2012 23:13:09
5	PUMP GEL SPACER	5/4/2012 23:17:43	6	PUMP H2O SPACER	5/4/2012 23:26:17
7	PUMP LEAD CEMENT	5/4/2012 23:29:51	8	PUMP TAIL CEMENT	5/5/2012 01:19:41
9	SHUTDOWN	5/5/2012 01:34:42	10	DROP TOP PLUG	5/5/2012 01:37:29
11	PUMP DISPLACEMENT	5/5/2012 01:37:55	12	SLOW RATE	5/5/2012 02:09:04
13	SLOW RATE	5/5/2012 02:16:11	14	BUMP PLUG	5/5/2012 02:20:00
15	CHECK FLOATS	5/5/2012 02:26:38			

Customer:	OXY GRAND JUNCTION EBUSINESS	Job Date:	04-May-2012	Sales Order #:	9487258
Well Description:	CC 697-05-67B	Job Type:	OFFLINE SURFACE	ADC Used:	YES
Company Rep:	TERRY ROSSER	Cement Supervisor:	RYON NICKLE	Elite # / Operator:	E6 / LOGAN WADE

OptiCem v6.4.10
05-May-12 02:39

OXY - CC 697-05-67B

OFFLINE SURFACE

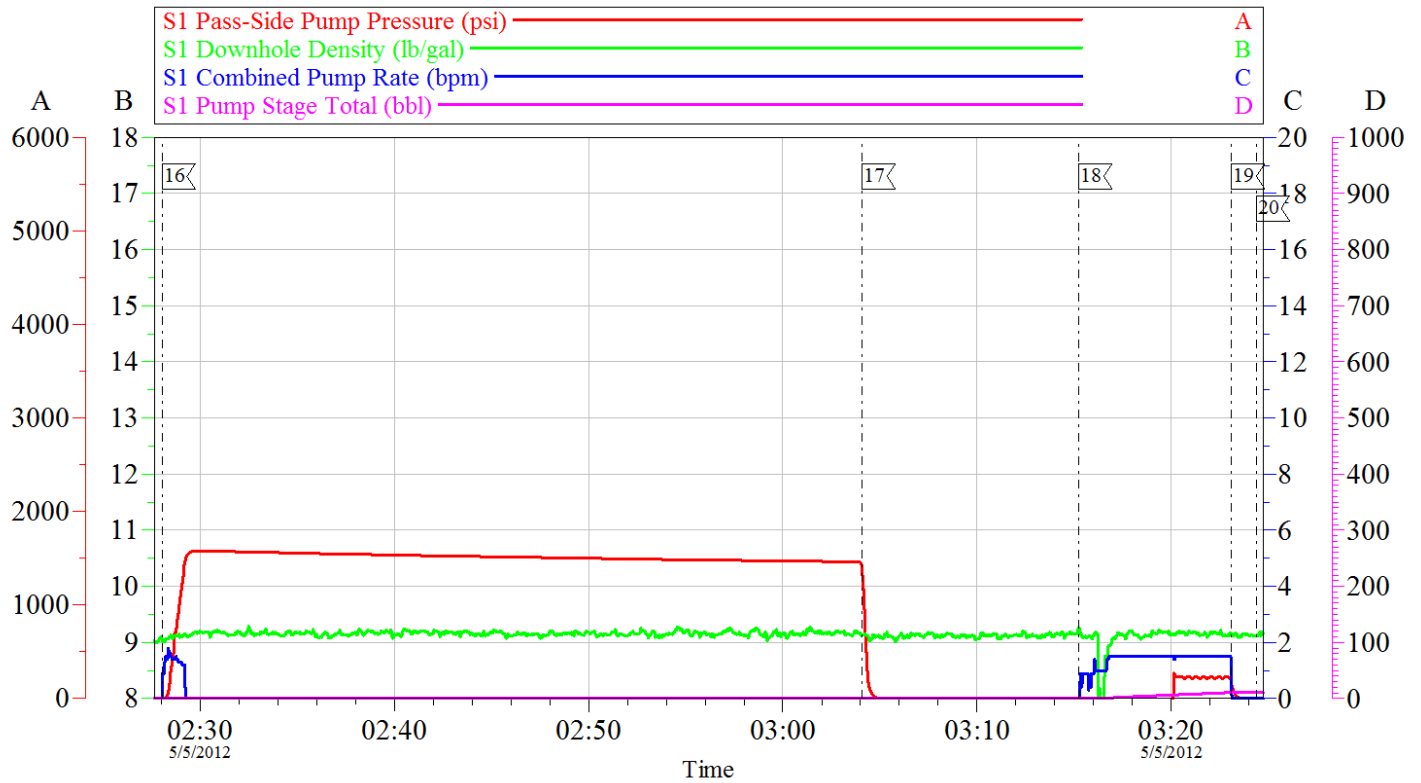


Customer:	OXY GRAND JUNCTION EBUSINESS	Job Date:	04-May-2012	Sales Order #:	9487258
Well Description:	CC 697-05-67B	Job Type:	OFFLINE SURFACE	ADC Used:	YES
Company Rep:	TERRY ROSSER	Cement Supervisor:	RYON NICKLE	Elite # / Operator:	E6 / LOGAN WADE

OptiCem v6.4.10
05-May-12 02:40

OXY - CC 697-05-67B

OFFLINE SURFACE



Local Event Log			
16<	PRESSURE UP CASING	02:28:02	17< RELEASE CASING PRESSURE 03:04:05
18<	PUMP TO CLEAR PARASITE	03:15:15	19< SHUTDOWN 03:23:06
20<	END JOB	03:24:22	

Customer:	OXY GRAND JUNCTION EBUSINESS	Job Date:	04-May-2012	Sales Order #:	9487258
Well Description:	CC 697-05-67B	Job Type:	OFFLINE SURFACE	ADC Used:	YES
Company Rep:	TERRY ROSSER	Cement Supervisor:	RYON NICKLE	Elite # / Operator:	E6 / LOGAN WADE

OptiCem v6.4.10
05-May-12 03:26

Sales Order #: 9487258	Line Item: 10	Survey Conducted Date: 5/5/2012
Customer: OXY GRAND JUNCTION EBUSINESS		Job Type (BOM): CMT SURFACE CASING BOM
Customer Representative: DONALDO		API / UWI: (leave blank if unknown) 05-045-20960
Well Name: CC		Well Number: 697-05-67B
Well Type: Development Well	Well Country: United States of America	
H2S Present:	Well State: Colorado	Well County: Garfield

Dear Customer,

We hope that you were satisfied with the service quality of this job performed by Halliburton. It is the aim of our management and service personnel to deliver equipment and service of a standard unmatched in the service sector of the energy industry.

Please take the time to let us know if our performance met with your satisfaction. Please be as critical as possible to ensure we constantly improve our service. Your comments are of great value to us and are intended for the exclusive use of Halliburton.

CUSTOMER SATISFACTION SURVEY

CATEGORY	CUSTOMER SATISFACTION RESPONSE	
Survey Conducted Date	The date the survey was conducted	5/5/2012
Survey Interviewer	The survey interviewer is the person who initiated the survey.	RYON NICKLE (HB22175)
Customer Participation	Did the customer participate in this survey? (Y/N)	Yes
Customer Representative	Enter the Customer representative name	DONALDO
HSE	Was our HSE performance satisfactory? Circle Y or N	Yes
Equipment	Were you satisfied with our Equipment? Circle Y or N	Yes
Personnel	Were you satisfied with our people? Circle Y or N	Yes
Customer Comment	Customer's Comment	

CUSTOMER SIGNATURE

Sales Order #: 9487258	Line Item: 10	Survey Conducted Date: 5/5/2012
Customer: OXY GRAND JUNCTION EBUSINESS		Job Type (BOM): CMT SURFACE CASING BOM
Customer Representative: DONALDO		API / UWI: (leave blank if unknown) 05-045-20960
Well Name: CC		Well Number: 697-05-67B
Well Type: Development Well	Well Country: United States of America	
H2S Present:	Well State: Colorado	Well County: Garfield

KEY PERFORMANCE INDICATORS

General	
Survey Conducted Date The date the survey was conducted	5/5/2012

Cementing KPI Survey	
Type of Job Select the type of job. (Cementing or Non-Cementing)	0
Select the Maximum Deviation range for this Job What is the highest deviation for the job you just completed? This may not be the maximum well deviation.	Vertical
Total Operating Time (hours) Total Operating Hours Including Rig-up, Pumping, Rig-down. Enter in decimal format.	6
HSE Incident, Accident, Injury HSE Incident, Accident, Injury. This should be recordable incidents only.	No
Was the job purpose achieved? Was the job delivered correctly as per customer agreed design?	Yes
Operating Hours (Pumping Hours) Total number of hours pumping fluid on this job. Enter in decimal format.	4.5
Customer Non-Productive Rig Time (hrs) Lost time due to Halliburton in the start, execution, or completion of an ordered service or product, or delays in a follow-on service. Enter in decimal format. 0 if none.	0
Type of Rig Classification Job Was Performed Type Of Rig (classification) Job Was Performed On	Drilling Rig (Portable)
Number Of JSAs Performed Number Of Jsas Performed	5
Number of Unplanned Shutdowns Unplanned shutdown is when injection stops for any period of time.	0
Was this a Primary Cement Job (Yes / No)	Yes

Sales Order #: 9487258	Line Item: 10	Survey Conducted Date: 5/5/2012
Customer: OXY GRAND JUNCTION EBUSINESS		Job Type (BOM): CMT SURFACE CASING BOM
Customer Representative: DONALDO		API / UWI: (leave blank if unknown) 05-045-20960
Well Name: CC		Well Number: 697-05-67B
Well Type: Development Well	Well Country: United States of America	
H2S Present:	Well State: Colorado	Well County: Garfield

Primary Cement Job= Casing job, Liner job, or Tie-back job.	
Did We Run Wiper Plugs? Did We Run Top And Bottom Casing Wiper Plugs?	Top
Mixing Density of Job Stayed in Designed Density Range (0-100%) Density Range defined as +/- .20 ppg. Calculation: Total BBLs cement mixed at designed density divided by total BBLs of cement multiplied by 100	95
Was Automated Density Control Used? Was Automated Density Control (ADC) Used ?	Yes
Pump Rate (percent) of Job Stayed At Designed Pump Rate Pump Rate range defined as +/- 1bbl/min. Calculation: Total BBLs of fluid pumped at the designed rate divided by Total BBLs of fluid pumped, multiplied by 100	95
Nbr of Remedial Sqz Jobs Rqd - Competition Number Of Remedial Squeeze Jobs Required After Primary Job Performed By Competition	0
Nbr of Remedial Plug Jobs Rqd - HES Number Of Remedial Plug Jobs Needed After Primary Plug Pumped By HES	0
Nbr of Remedial Sqz Jobs Rqd - HES Number Of Remedial Squeeze Jobs Required After Primary Job Performed By HES	0