
OXY GRAND JUNCTION EBUSINESS

CC 697-05-74B
GRAND VALLEY
Garfield County , Colorado

Cement Surface Casing
23-Apr-2012

Post Job Summary

The Road to Excellence Starts with Safety

Sold To #: 344034		Ship To #: 344034		Quote #:		Sales Order #: 9410065	
Customer: OXY GRAND JUNCTION EBUSINESS				Customer Rep: Vallegas, Alex			
Well Name: CC			Well #: 697-05-74B			API/UWI #: 05-045-20964	
Field: GRAND VALLEY		City (SAP): ADDISON		County/Parish: Garfield		State: Colorado	
Lat: N 39.544 deg. OR N 39 deg. 32 min. 37.32 secs.				Long: W 108.246 deg. OR W -109 deg. 45 min. 12.744 secs.			
Contractor: H&P 353			Rig/Platform Name/Num: H&P 353				
Job Purpose: Cement Surface Casing							
Well Type: Development Well			Job Type: Cement Surface Casing				
Sales Person: HIMES, JEFFREY			Srvc Supervisor: YOUNG, JEREMY			MBU ID Emp #: 418013	

Job Personnel

HES Emp Name	Exp Hrs	Emp #	HES Emp Name	Exp Hrs	Emp #	HES Emp Name	Exp Hrs	Emp #
ANDREWS, ANTHONY Michael	2	321604	BURKE, BRENDAN Patrick	10	487782	GOWEN, WESLEY M	10	496205
KUKUS, CARLTON Dean	10	458577	YOUNG, JEREMY R	10	418013			

Equipment

HES Unit #	Distance-1 way	HES Unit #	Distance-1 way	HES Unit #	Distance-1 way	HES Unit #	Distance-1 way
	120 mile	10867423	120 mile	10938658	120 mile	11259881	120 mile
11360881	120 mile	11560046	120 mile	11562538	120 mile	11808833	120 mile
11808839	120 mile	4901	120 mile	6543	120 mile		

Job Hours

Date	On Location Hours	Operating Hours	Date	On Location Hours	Operating Hours	Date	On Location Hours	Operating Hours
04/23/2012	9	7	04/24/1012	1	1			

TOTAL Total is the sum of each column separately

Job

Formation Name	Top	Bottom	Called Out	Date	Time	Time Zone
Formation Depth (MD)			On Location	23 - Apr - 2012	08:30	MST
Form Type		BHST	Job Started	23 - Apr - 2012	15:00	MST
Job depth MD	2690. ft	Job Depth TVD	Job Completed	23 - Apr - 2012	18:03	MST
Water Depth		Wk Ht Above Floor	Departed Loc	23 - Apr - 2012	23:33	MST
Perforation Depth (MD)	From	To		24 - Apr - 2012	01:00	MST

Well Data

Description	New / Used	Max pressure psig	Size in	ID in	Weight lbm/ft	Thread	Grade	Top MD ft	Bottom MD ft	Top TVD ft	Bottom TVD ft
14 3/4" OPEN HOLE				14.75				.	2740.		
9 5/8" SURFACE CASING	Unknown		9.625	8.921	36.		J-55	.	2689.4		

Sales/Rental/3rd Party (HES)

Description	Qty	Qty uom	Depth	Supplier
PLUG,CMTG,TOP,9 5/8,HWE,8.16 MIN/9.06 MA	1	EA		

Tools and Accessories

Type	Size	Qty	Make	Depth	Type	Size	Qty	Make	Depth	Type	Size	Qty	Make
Guide Shoe					Packer					Top Plug	9.625	1	HES
Float Shoe					Bridge Plug					Bottom Plug			
Float Collar					Retainer					SSR plug set			
Insert Float										Plug Container	9.625	1	HES
Stage Tool										Centralizers			

Miscellaneous Materials

Gelling Agt	Conc	Surfactant	Conc	Acid Type	Qty	Conc	%
Treatment Fld	Conc	Inhibitor	Conc	Sand Type	Size		Qty

Fluid Data

Stage/Plug #: 1									
Fluid #	Stage Type	Fluid Name	Qty	Qty uom	Mixing Density lbm/gal	Yield ft ³ /sk	Mix Fluid Gal/sk	Rate bbl/min	Total Mix Fluid Gal/sk
1	Fresh Water Spacer	FRESH WATER	10.00	bbl	8.33	.0	.0	2	
2	Gel Water Spacer	GEL WATER	20.00	bbl	8.34	.0	.0	4	
0.25 gal/bbl		LGC-36 UC, BULK (10158274)							
3	Fresh Water Spacer	FRESH WATER	10.00	bbl	8.33	.0	.0	4	
4	Lead Cement	HALCEM (TM) SYSTEM (452986)	1160.0	sacks	12.3	2.15	11.83	6	11.83
11.83 Gal		FRESH WATER							
5	Tail Cement	VERSACEM (TM) SYSTEM (452010)	160.0	sacks	12.8	2.07	10.67	6	10.67
10.67 Gal		FRESH WATER							
6	Fresh Water Displacement	FRESH WATER	204.10	bbl	8.34	.0	.0	6	
7	Top Out Cement	HALCEM (TM) SYSTEM (452986)	94.00	sacks	12.5	1.97	10.96	3	10.96
10.96 Gal		FRESH WATER							
Calculated Values		Pressures		Volumes					
Displacement	204.1	Shut In: Instant		Lost Returns	YES	Cement Slurry	536.2	Pad	
Top Of Cement	SURFACE	5 Min		Cement Returns	2	Actual Displacement	204.1	Treatment	
Frac Gradient		15 Min		Spacers	40	Load and Breakdown		Total Job	781.3
Rates									
Circulating		Mixing	6	Displacement	6	Avg. Job	6		
Cement Left In Pipe	Amount	48.49 ft	Reason	Shoe Joint					
Frac Ring # 1 @	ID	Frac ring # 2 @	ID	Frac Ring # 3 @	ID	Frac Ring # 4 @	ID		
The Information Stated Herein Is Correct				Customer Representative Signature					

The Road to Excellence Starts with Safety

Sold To #: 344034	Ship To #: 344034	Quote #:	Sales Order #: 9410065
Customer: OXY GRAND JUNCTION EBUSINESS		Customer Rep: Vallegas, Alex	
Well Name: CC	Well #: 697-05-74B	API/UWI #: 05-045-20964	
Field: GRAND VALLEY	City (SAP): ADDISON	County/Parish: Garfield	State: Colorado
Legal Description:			
Lat: N 39.544 deg. OR N 39 deg. 32 min. 37.32 secs.		Long: W 108.246 deg. OR W -109 deg. 45 min. 12.744 secs.	
Contractor: H&P 353		Rig/Platform Name/Num: H&P 353	
Job Purpose: Cement Surface Casing			Ticket Amount:
Well Type: Development Well		Job Type: Cement Surface Casing	
Sales Person: HIMES, JEFFREY		Srvc Supervisor: YOUNG, JEREMY	MBU ID Emp #: 418013

Activity Description	Date/Time	Cht #	Rate bbl/min	Volume bbl		Pressure psig		Comments
				Stage	Total	Tubing	Casing	
Call Out	04/23/2012 08:30							
Pre-Convoy Safety Meeting	04/23/2012 11:50							WITH ALL HES PERSONNEL
Crew Leave Yard	04/23/2012 12:00							
Arrive At Loc	04/23/2012 15:00							RIG WAS RUNNING CASING UPON HES ARRIVAL
Assessment Of Location Safety Meeting	04/23/2012 16:30							WITH ALL HES PERSONNEL
Other	04/23/2012 16:40							SPOT EQUIPMENT
Pre-Rig Up Safety Meeting	04/23/2012 16:50							WITH ALL HES PERSONNEL
Rig-Up Equipment	04/23/2012 17:00							
Pre-Job Safety Meeting	04/23/2012 17:50							WITH ALL PERSONNEL ON LOCATION
Start Job	04/23/2012 18:03							TD 2740 FT, TP 2689.42 FT, SHOE 48.49 FT, HOLE 14 3/4 IN, MUD WT 9.5 PPG, CSG 9 5/8 IN 36 LB/FT J-55
Other	04/23/2012 18:04		2	2			58.0	FILL LINES WITH FRESH WATER
Test Lines	04/23/2012 18:06							TEST LINES TO 3600 PSI. PRESSURE HOLDING
Pump Spacer 1	04/23/2012 18:14		2	10			62.0	FRESH WATER
Pump Spacer 2	04/23/2012 18:20		4	20			120.0	GEL WATER
Pump Spacer 1	04/23/2012 18:29		4	10			130.0	FRESH WATER

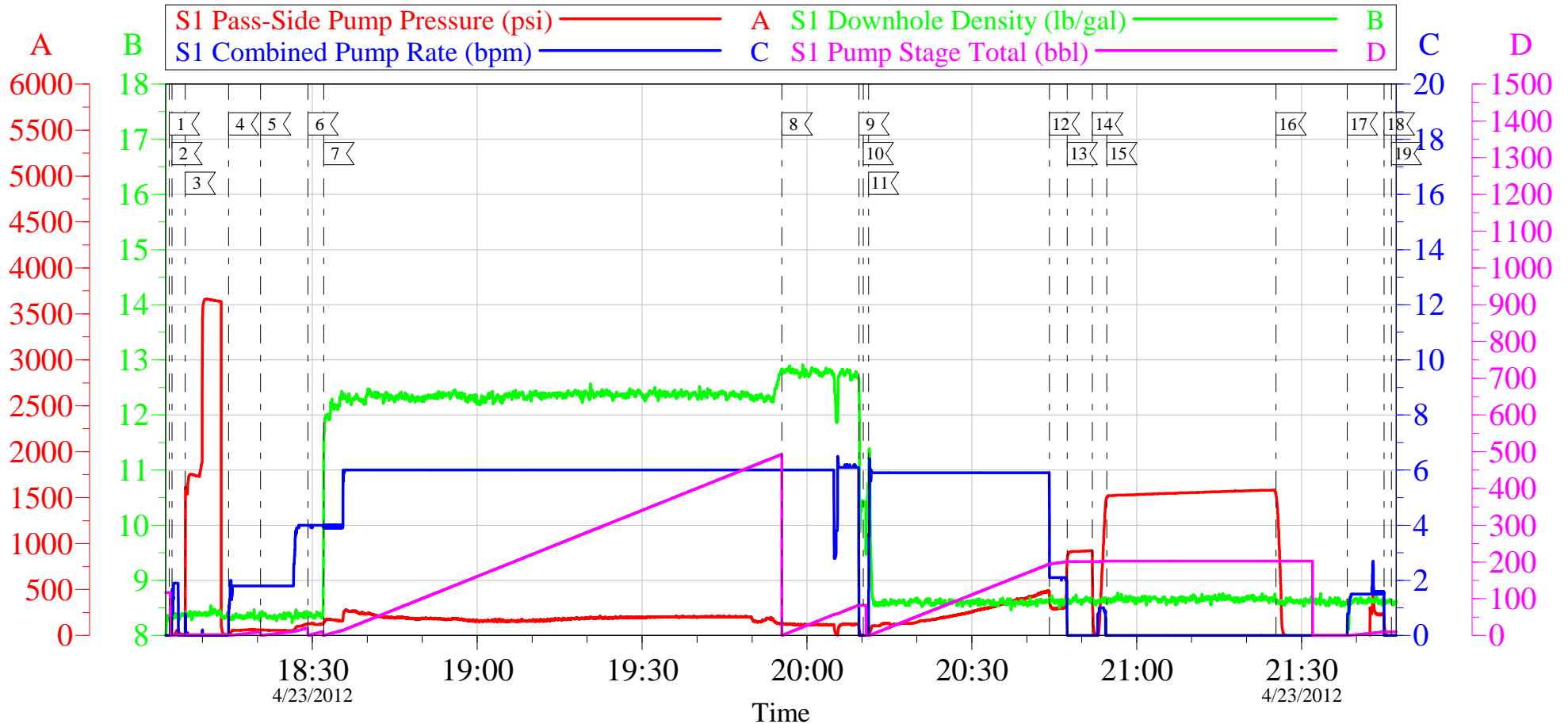
Activity Description	Date/Time	Cht #	Rate bbl/min	Volume bbl		Pressure psig		Comments
				Stage	Total	Tubing	Casing	
Pump Lead Cement	04/23/2012 18:32		6	444.2			200.0	1160 SKS AT 12.3 PPG, 2.15 FT3/SK, 11.83 GAL/SK
Pump Tail Cement	04/23/2012 19:55		6	59			130.0	160 SKS AT 12.8 PPG, 2.07 FT3/SK, 10.67 GAL/SK
Shutdown	04/23/2012 20:09							
Drop Top Plug	04/23/2012 20:10							PLUG LAUNCHED
Pump Displacement	04/23/2012 20:11		6	194.1			480.0	FRESH WATER
Slow Rate	04/23/2012 20:44		2	10			335.0	SLOW RATE 10 BBLS PRIOR TO CALCULATED DISPLACEMENT
Bump Plug	04/23/2012 20:47		2		204.1		900.0	PLUG BUMPED
Check Floats	04/23/2012 20:51							FLOATS HOLDING. RETURNED 1 BBL H2O TO PUMP
Pressure Test	04/23/2012 20:54						1500.0	PRESSURE TEST CASING TO 1500 PSI FOR 30 MIN AS PER COMAPNY REP
Other	04/23/2012 21:25							RELEASE PRESSURE
Pump Water	04/23/2012 21:38		1.5	10		300.0		PUMP SUGAR WATER DOWN PARASITE STRING
Shutdown	04/23/2012 21:45							
End Job	04/23/2012 21:46							JOB PUMPED OFFLINE THROUGH PLUG CONTAINER WITH QUICK LATCH. PIPE WAS STATIC DURING JOB. GOOD CIRCULATION UNTIL 150 BBL LEAD CMT AWAY WHEN CIRCULATION WAS LOST. HES RETURNED NO CEMENT TO SURFACE
Start Job	04/23/2012 22:57							TOPOUT #1
Activity Description	Date/Time	Cht	Rate bbl/min	Volume bbl		Pressure psig		Comments

Cementing Job Log

		#		Stage	Total	Tubing	Casing	
Pump Water	04/23/2012 22:58		1	1		.0		PUMP WATER AHEAD TO ENSURE LINES ARE CLEAR
Shutdown	04/23/2012 22:59							SHUTDOWN TO MIX UP CEMENT
Pump Cement	04/23/2012 23:04		3	33		82.0		94 SKS AT 12.5 PPG, 1.97 FT3/SK, 10.96 GAL/SK
Shutdown	04/23/2012 23:32							HESITATED CEMENT 3 TIMES UNTIL CEMENT WAS NO LONGER FALLING BACK FROM SURFACE
End Job	04/23/2012 23:33							HES RETURNED 2 BBL CEMENT TO SURFACE
Pre-Rig Down Safety Meeting	04/23/2012 23:40							WITH ALL HES PERSONNEL
Rig-Down Equipment	04/23/2012 23:50							
Pre-Convoy Safety Meeting	04/24/2012 00:50							WITH ALL HES PERSONNEL
Crew Leave Location	04/24/2012 01:00							
Comment	04/24/2012 01:01							THANK YOU FOR USING HALLIBURTON CEMENT DEPARTMENT. JEREMY YOUNG AND CREW.

OXY - CC 697-05-74B

9 5/8 SURFACE



Local Event Log

1 START JOB	18:03:56	2 FILL LINES	18:04:27	3 TEST LINES	18:06:51
4 PUMP H2O SPACER 1	18:14:45	5 PUMP GEL SPACER	18:20:34	6 PUMP H2O SPACER 2	18:29:12
7 PUMP LEAD CEMENT	18:32:05	8 PUMP TAIL CEMENT	19:55:27	9 SHUTDOWN	20:09:27
10 DROP TOP PLUG	20:10:15	11 PUMP DISPLACEMENT	20:11:12	12 SLOW RATE	20:44:08
13 BUMP PLUG	20:47:21	14 CHECK FLOATS	20:51:57	15 PRESSURE TEST CASING	20:54:34
16 RELEASE PRESSURE	21:25:22	17 PUMP DOWN PARASITE STRING	21:38:21	18 SHUTDOWN	21:45:03
19 END JOB	21:46:21				

Customer: OXY
Well Description: CC 697-05-74B
Company Rep: ALEX VALLEGAS

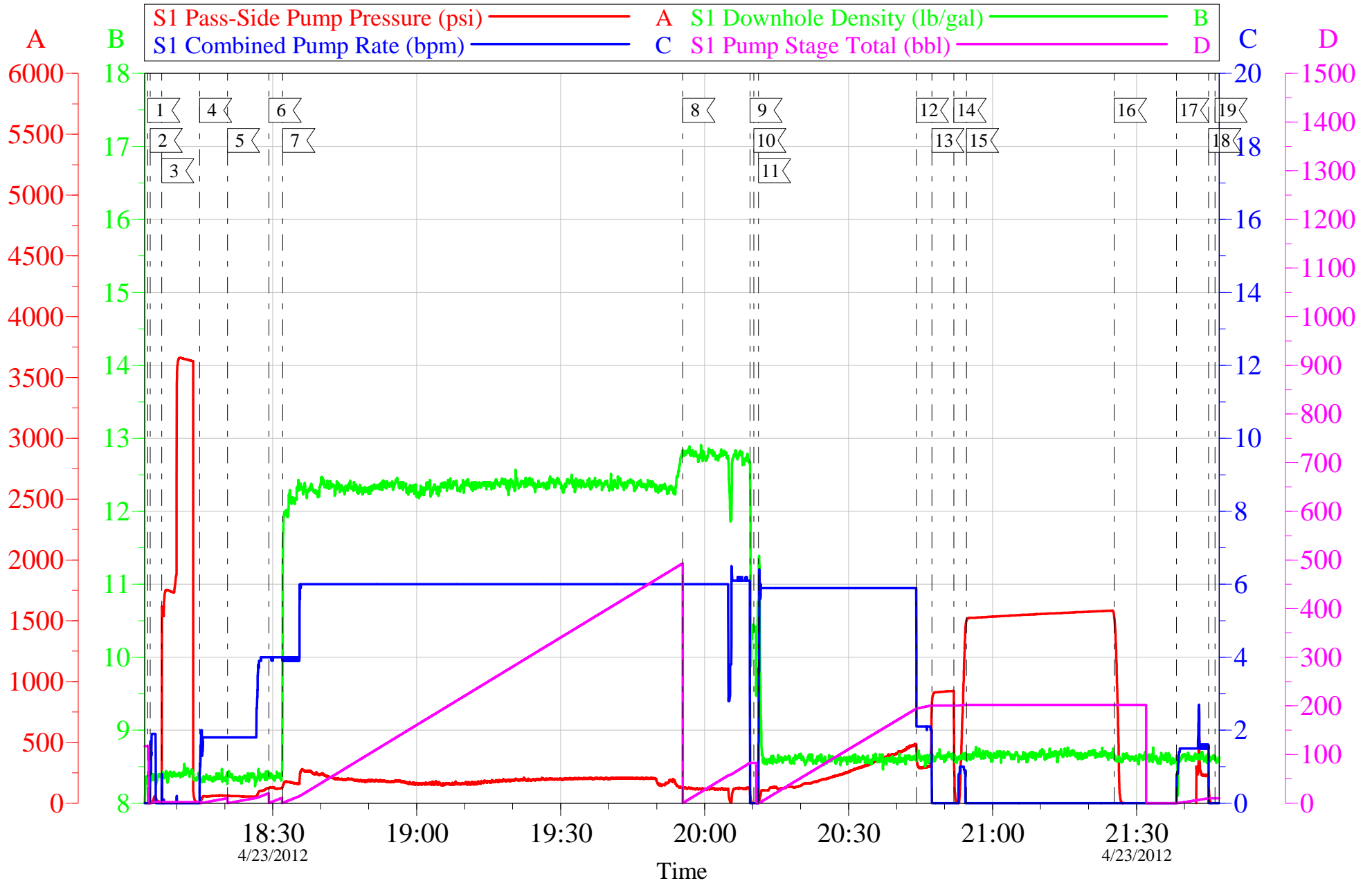
Job Date: 23-Apr-2012
Job Type: SURFACE
Cement Supervisor: JEREMY YOUNG

Sales Order #: 9410065
ADC Used: YES
Elite #5: BRENDAN BURKE

OptiCem v6.4.10
23-Apr-12 21:59

OXY - CC 697-05-74B

9 5/8 SURFACE

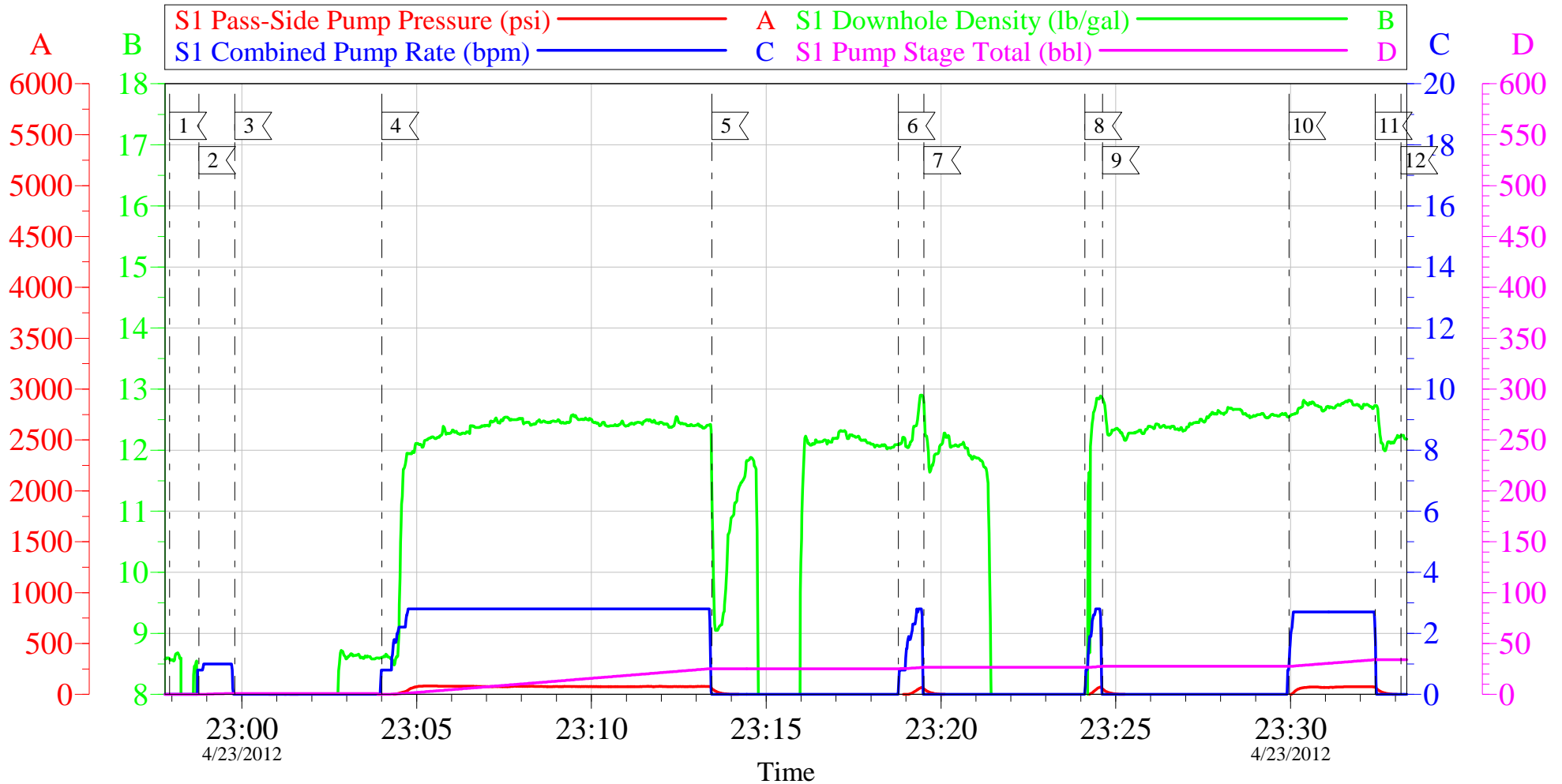


Customer: OXY	Job Date: 23-Apr-2012	Sales Order #: 9410065
Well Description: CC 697-05-74B	Job Type: SURFACE	ADC Used: YES
Company Rep: ALEX VALLEGAS	Cement Supervisor: JEREMY YOUNG	Elite #5: BRENDAN BURKE

OptiCem v6.4.10
23-Apr-12 21:57

OXY - CC 697-05-74B

TOPOUT #1



Local Event Log

1 START JOB	22:57:56	2 PUMP WATER AHEAD	22:58:46	3 SHUTDOWN	22:59:48
4 PUMP CEMENT	23:04:00	5 SHUTDOWN	23:13:27	6 RESUME PUMPING	23:18:47
7 SHUTDOWN	23:19:31	8 RESUME PUMPING	23:24:07	9 SHUTDOWN	23:24:37
10 RESUME PUMPING	23:29:57	11 SHUTDOWN	23:32:25	12 END JOB	23:33:10

Customer: OXY
Well Description: CC 697-05-74B
Company Rep: ALEX VALLEGAS

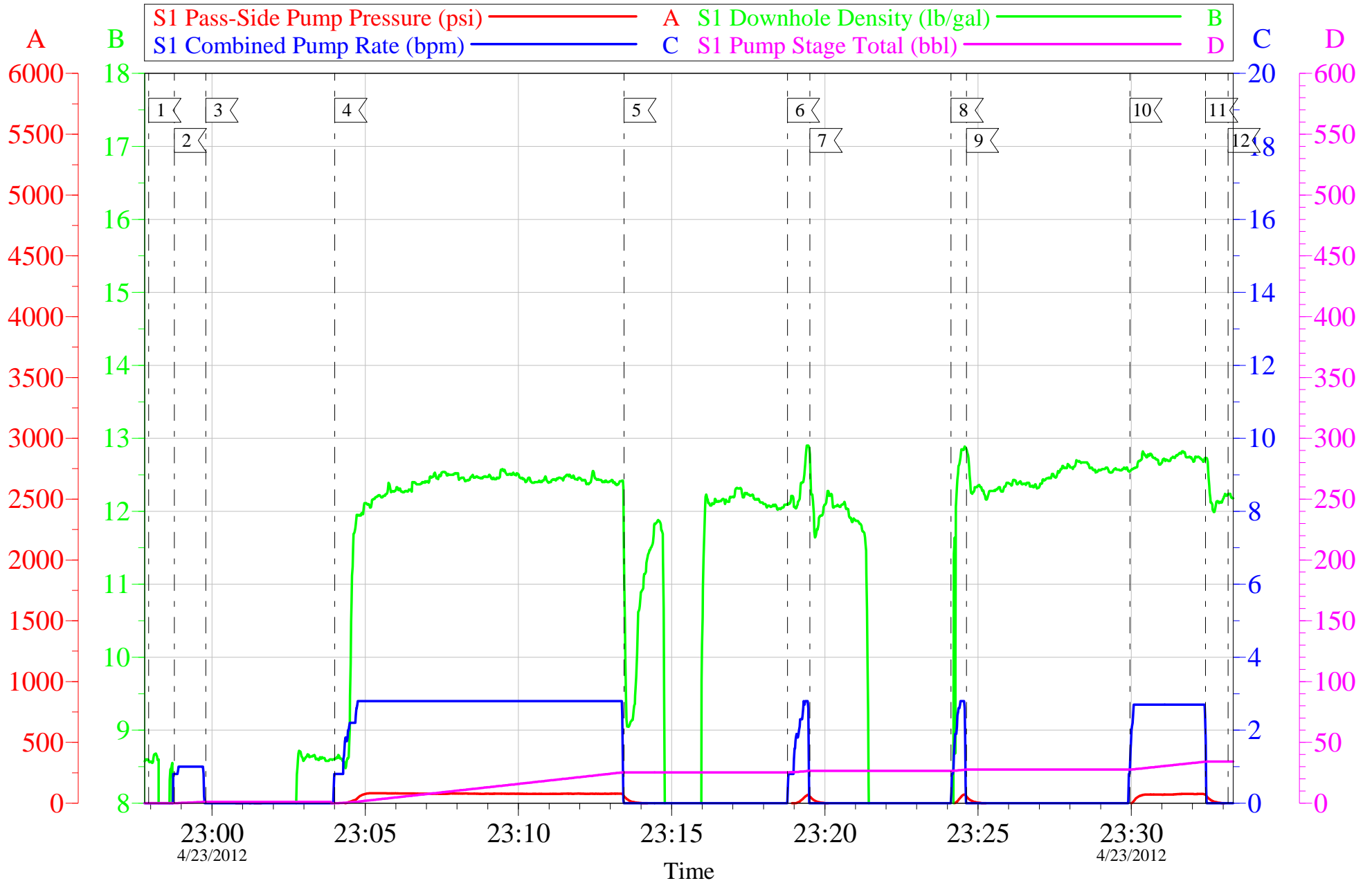
Job Date: 23-Apr-2012
Job Type: TOPOUT #1
Cement Supervisor: JEREMY YOUNG

Sales Order #: 9410065
ADC Used: YES
Elite #5: BRENDAN BURKE

OptiCem v6.4.10
23-Apr-12 23:39

OXY - CC 697-05-74B

TOPOUT #1



Customer: OXY	Job Date: 23-Apr-2012	Sales Order #: 9410065
Well Description: CC 697-05-74B	Job Type: TOPOUT #1	ADC Used: YES
Company Rep: ALEX VALLEGAS	Cement Supervisor: JEREMY YOUNG	Elite #5: BRENDAN BURKE

OptiCem v6.4.10
23-Apr-12 23:39

HALLIBURTON

Water Analysis Report

Company: OXY

Submitted by: JEREMY YOUNG

Attention: LAB

Lease CC

Well # 697-05-74B

Date: 4/23/2012

Date Rec.:

S.O.# 9410065

Job Type: SURFACE

Specific Gravity	<i>MAX</i>	1
pH	<i>8</i>	7
Potassium (K)	<i>5000</i>	200 Mg / L
Calcium (Ca)	<i>500</i>	250 Mg / L
Iron (FE2)	<i>300</i>	0 Mg / L
Chlorides (Cl)	<i>3000</i>	0 Mg / L
Sulfates (SO ₄)	<i>1500</i>	UNDER 200 Mg / L
Chlorine (Cl ₂)		0 Mg / L
Temp	<i>40-80</i>	68 Deg
Total Dissolved Solids		570 Mg / L

Respectfully: JEREMY YOUNG

Title: CEMENTING SUPERVISOR

Location: Grand Junction, CO

NOTICE:

This report is limited to the described sample tested. Any person using or relying on this report agrees that Halliburton shall not be liable for any loss or damage whether due to act or omission resulting from such report or its use.

Sales Order #: 9410065	Line Item: 10	Survey Conducted Date: 4/24/2012
Customer: OXY GRAND JUNCTION EBUSINESS		Job Type (BOM): CMT SURFACE CASING BOM
Customer Representative: ALEX VALLEGAS		API / UWI: (leave blank if unknown) 05-045-20964
Well Name: CC		Well Number: 697-05-74B
Well Type: Development Well	Well Country: United States of America	
H2S Present:	Well State: Colorado	Well County: Garfield

Dear Customer,

We hope that you were satisfied with the service quality of this job performed by Halliburton. It is the aim of our management and service personnel to deliver equipment and service of a standard unmatched in the service sector of the energy industry.

Please take the time to let us know if our performance met with your satisfaction. Please be as critical as possible to ensure we constantly improve our service. Your comments are of great value to us and are intended for the exclusive use of Halliburton.

CUSTOMER SATISFACTION SURVEY

CATEGORY	CUSTOMER SATISFACTION RESPONSE	
Survey Conducted Date	The date the survey was conducted	4/23/2012
Survey Interviewer	The survey interviewer is the person who initiated the survey.	JEREMY YOUNG (HX37077)
Customer Participation	Did the customer participate in this survey? (Y/N)	Yes
Customer Representative	Enter the Customer representative name	ALEX VALLEGAS
HSE	Was our HSE performance satisfactory? Circle Y or N	Yes
Equipment	Were you satisfied with our Equipment? Circle Y or N	Yes
Personnel	Were you satisfied with our people? Circle Y or N	Yes
Customer Comment	Customer's Comment	

CUSTOMER SIGNATURE

Sales Order #: 9410065	Line Item: 10	Survey Conducted Date: 4/24/2012
Customer: OXY GRAND JUNCTION EBUSINESS		Job Type (BOM): CMT SURFACE CASING BOM
Customer Representative: ALEX VALLEGAS		API / UWI: (leave blank if unknown) 05-045-20964
Well Name: CC		Well Number: 697-05-74B
Well Type: Development Well	Well Country: United States of America	
H2S Present:	Well State: Colorado	Well County: Garfield

KEY PERFORMANCE INDICATORS

General	
Survey Conducted Date The date the survey was conducted	4/24/2012

Cementing KPI Survey	
Type of Job Select the type of job. (Cementing or Non-Cementing)	0
Select the Maximum Deviation range for this Job What is the highest deviation for the job you just completed? This may not be the maximum well deviation.	Vertical
Total Operating Time (hours) Total Operating Hours Including Rig-up, Pumping, Rig-down. Enter in decimal format.	7
HSE Incident, Accident, Injury HSE Incident, Accident, Injury. This should be recordable incidents only.	No
Was the job purpose achieved? Was the job delivered correctly as per customer agreed design?	Yes
Operating Hours (Pumping Hours) Total number of hours pumping fluid on this job. Enter in decimal format.	5
Customer Non-Productive Rig Time (hrs) Lost time due to Halliburton in the start, execution, or completion of an ordered service or product, or delays in a follow-on service. Enter in decimal format. 0 if none.	0
Type of Rig Classification Job Was Performed Type Of Rig (classification) Job Was Performed On	Drilling Rig (Portable)
Number Of JSAs Performed Number Of Jsas Performed	8
Number of Unplanned Shutdowns Unplanned shutdown is when injection stops for any period of time.	0
Was this a Primary Cement Job (Yes / No)	Yes

Sales Order #: 9410065	Line Item: 10	Survey Conducted Date: 4/24/2012
Customer: OXY GRAND JUNCTION EBUSINESS		Job Type (BOM): CMT SURFACE CASING BOM
Customer Representative: ALEX VALLEGAS		API / UWI: (leave blank if unknown) 05-045-20964
Well Name: CC		Well Number: 697-05-74B
Well Type: Development Well	Well Country: United States of America	
H2S Present:	Well State: Colorado	Well County: Garfield

Primary Cement Job= Casing job, Liner job, or Tie-back job.	
Did We Run Wiper Plugs? Did We Run Top And Bottom Casing Wiper Plugs?	Top
Mixing Density of Job Stayed in Designed Density Range (0-100%) Density Range defined as +/- .20 ppg. Calculation: Total BBLs cement mixed at designed density divided by total BBLs of cement multiplied by 100	95
Was Automated Density Control Used? Was Automated Density Control (ADC) Used ?	Yes
Pump Rate (percent) of Job Stayed At Designed Pump Rate Pump Rate range defined as +/- 1bbl/min. Calculation: Total BBLs of fluid pumped at the designed rate divided by Total BBLs of fluid pumped, multiplied by 100	98
Nbr of Remedial Sqz Jobs Rqd - Competition Number Of Remedial Squeeze Jobs Required After Primary Job Performed By Competition	0
Nbr of Remedial Plug Jobs Rqd - HES Number Of Remedial Plug Jobs Needed After Primary Plug Pumped By HES	0
Nbr of Remedial Sqz Jobs Rqd - HES Number Of Remedial Squeeze Jobs Required After Primary Job Performed By HES	0