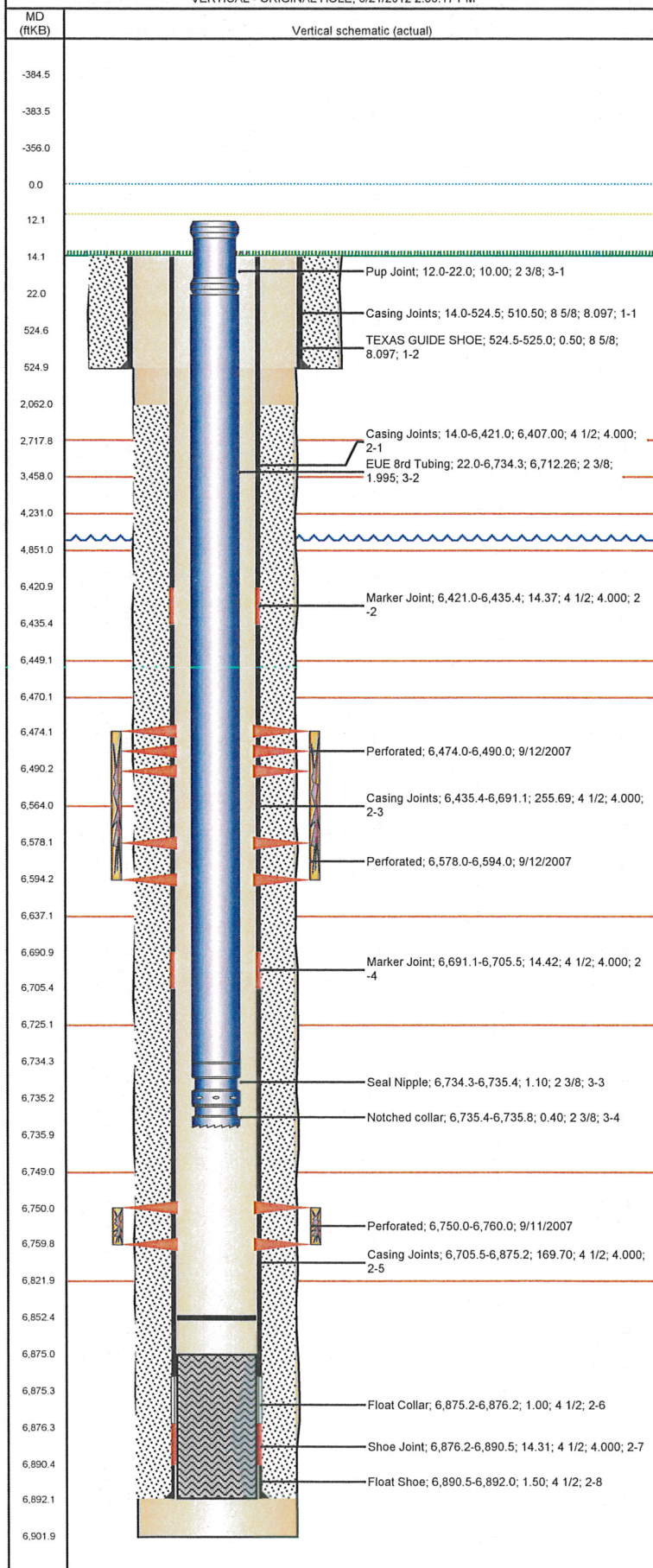


Well Name: BASHOR STATE AA16-13

VERTICAL - ORIGINAL HOLE, 6/21/2012 2:55:17 PM



Well Header

API	Business Unit	District	Well Config
05-123-26127	WATTENBERG	15	VERTICAL
Original KB Elevation (ft)	KB - GL / MSL (ftKB)	Spud Date	P & A Date
4,694.00	14.00	8/18/2007	
Comment			

Directions To Well
WCR 68 & 67, WEST 7/10, NORTH 1/10, WEST INTO

Current PBTD (ftKB)
ORIGINAL HOLE - 6,852.2

Surface Location (Congressional)

Quarter 1	Quarter 2	Quarter 3	Quarter 4	Section	Township	Twnshp N...	Range	Rng E/W Dir
		SW	SW	16	6 N		63	W

Bottom Hole Location

North-South Distance (ft)	From N or S Line	East-West Distance (ft)	From E or W Line

Plug Back Total Depths

Date	Depth (ftKB)	Method	Com
8/21/2007	6,875.2	CASING TALLY	FLOAT COLLAR
9/10/2007	6,835.0	CASED HOLE LOG	DEPTH LOGGER

Wellbore Sections

Section Des	Size (in)	Act Top (ftKB)	Act Btm (ftKB)
SURFACE	12 1/4	14.0	525.0
PRODUCTION	7 7/8	525.0	6,902.0

Zone Statuses

Zone Name	Status Date	Status	Job
CODELL	10/25/2007	PR	DRILLING/COMPLETION - ORIGINAL, 8/18/2007 00:00
CODELL	11/18/2011	PR	RE-FRAC, 10/7/2011 06:00
NIOBRARA	10/25/2007	PR	DRILLING/COMPLETION - ORIGINAL, 8/18/2007 00:00

Casing Strings

Csg Des	Run Date	OD (in)	W/Len (lb/ft)	Grade	Top (ftKB)	Set Depth (ftKB)
Surface	8/19/2007	8 5/8	24.00	J-55	14.0	525.0
Production	8/21/2007	4 1/2	11.60	M-80	14.0	6,892.0

Cement

Des	Top (ftKB)	Btm (ftKB)
SURFACE CASING CEMENT	14.0	525.0
PRODUCTION CASING CEMENT	2,062.0	6,892.0

Tubing Components

Item Des	OD (in)	Wt (lb/ft)	Grade	Jts	Len (ft)
Pup Joint	2 3/8		L-80	1	10.00
EUE 8rd Tubing	2 3/8	4.70	J-55	217	6,712.26
Seal Nipple	2 3/8			1	1.10
Notched collar	2 3/8			1	0.40

Perforation Data

Zone	Bnch/St g	Entered Shot Total	Top (ftKB)	Btm (ftKB)	Date
NIOBRARA, ORIGINAL HOLE		64	6,474.0	6,490.0	9/12/2007
NIOBRARA, ORIGINAL HOLE		64	6,578.0	6,594.0	9/12/2007
CODELL, ORIGINAL HOLE		40	6,750.0	6,760.0	9/11/2007

Stimulations & Treatments

Bnch/Stg	Date	Zone	Primary Job Type
	9/13/2007	NIOBRARA, ORIGINAL HOLE	DRILLING/COMPLETION - ORIGINAL
Comment			

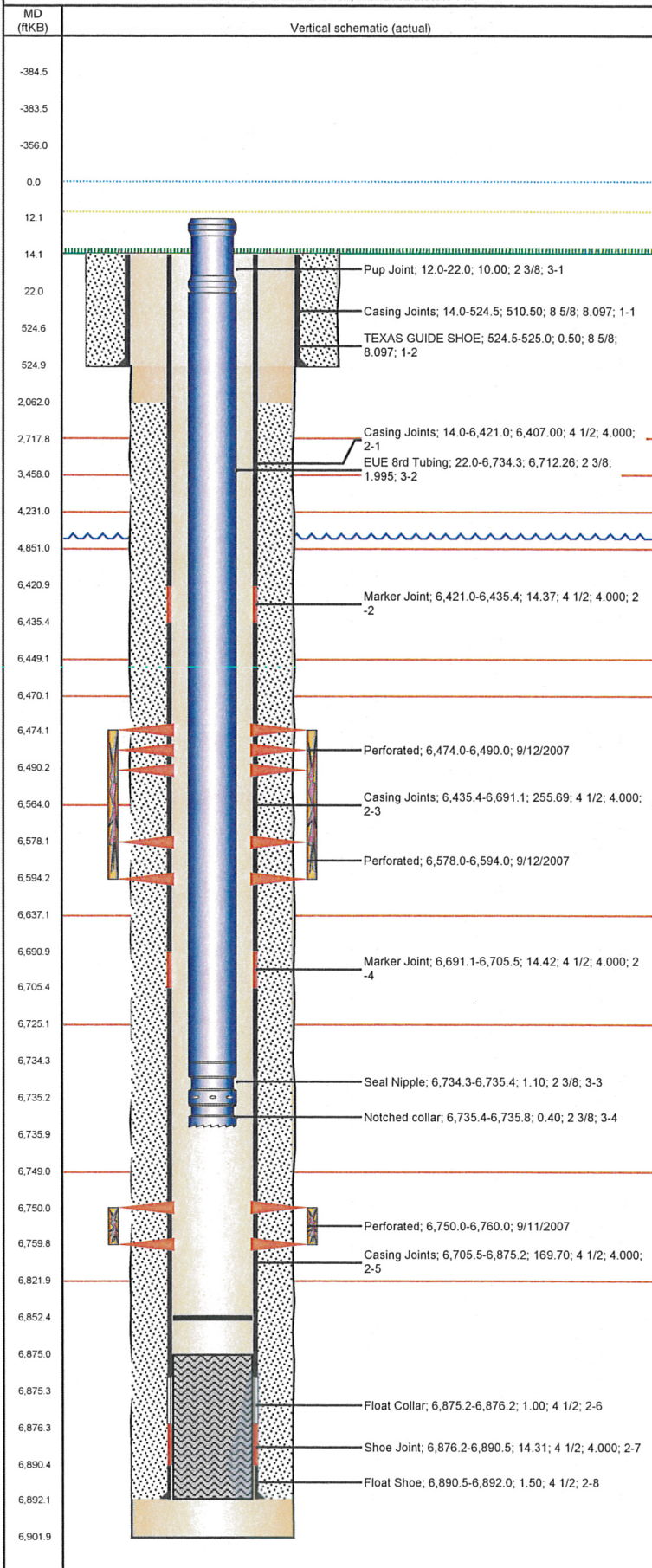
Total Add Amount	Total Clean Volume...	Vol Slurry Tot (gal)	Vol Gas Tot (MCF)
Proppant 250080 lb		172578.00	
Avg Treat Pressure (psi)	Max Treat Pressure (psi)	Avg Treat Rate (bbl/min)	Max Treat Rate (bbl/min)
4,691.0	4,999.0	52.30	57.80

Bnch/Stg	Date	Zone	Primary Job Type
	9/13/2007	CODELL, ORIGINAL HOLE	DRILLING/COMPLETION - ORIGINAL
Comment			

Total Add Amount	Total Clean Volume...	Vol Slurry Tot (gal)	Vol Gas Tot (MCF)
Proppant Ottawa 270740 lb		128772.00	
Avg Treat Pressure (psi)	Max Treat Pressure (psi)	Avg Treat Rate (bbl/min)	Max Treat Rate (bbl/min)
3,509.0	4,232.0	22.70	22.90

Well Name: BASHOR STATE AA16-13

VERTICAL - ORIGINAL HOLE, 6/21/2012 2:55:17 PM



Stimulations & Treatments

Bnch/Stg	Date	Zone	Primary Job Type	
	10/25/2011	CODELL, ORIGINAL HOLE	RE-FRAC	
Comment				
SWEDGE NOT HOLDING PRESSURE. REPLCD. BCKSIDE P BUILD TO 3015. BLEED OFF- LINED OUT 2282#				
Total Add Amount		Total Clean Volume...	Vol Slurry Tot (gal)	Vol Gas Tot (MCF)
Ottawa 0 lb		129841.74	140969.22	
Avg Treat Pressure (psi)	Max Treat Pressure (psi)	Avg Treat Rate (bbl/min)	Max Treat Rate (bbl/min)	
4,413.0	4,726.0	14.30	15.10	

Other In Hole

Run Date	Des	OD (in)	Top (ftKB)	Btm (ftKB)

Logs

Date	Type	Top (ftKB)	Btm (ftKB)
8/21/2007	COMPENSATED DENSITY	2,650.0	6,875.0
8/21/2007	INDUCTION	725.0	6,895.0
9/10/2007	CBL/CCL/GR	1,960.0	6,828.0