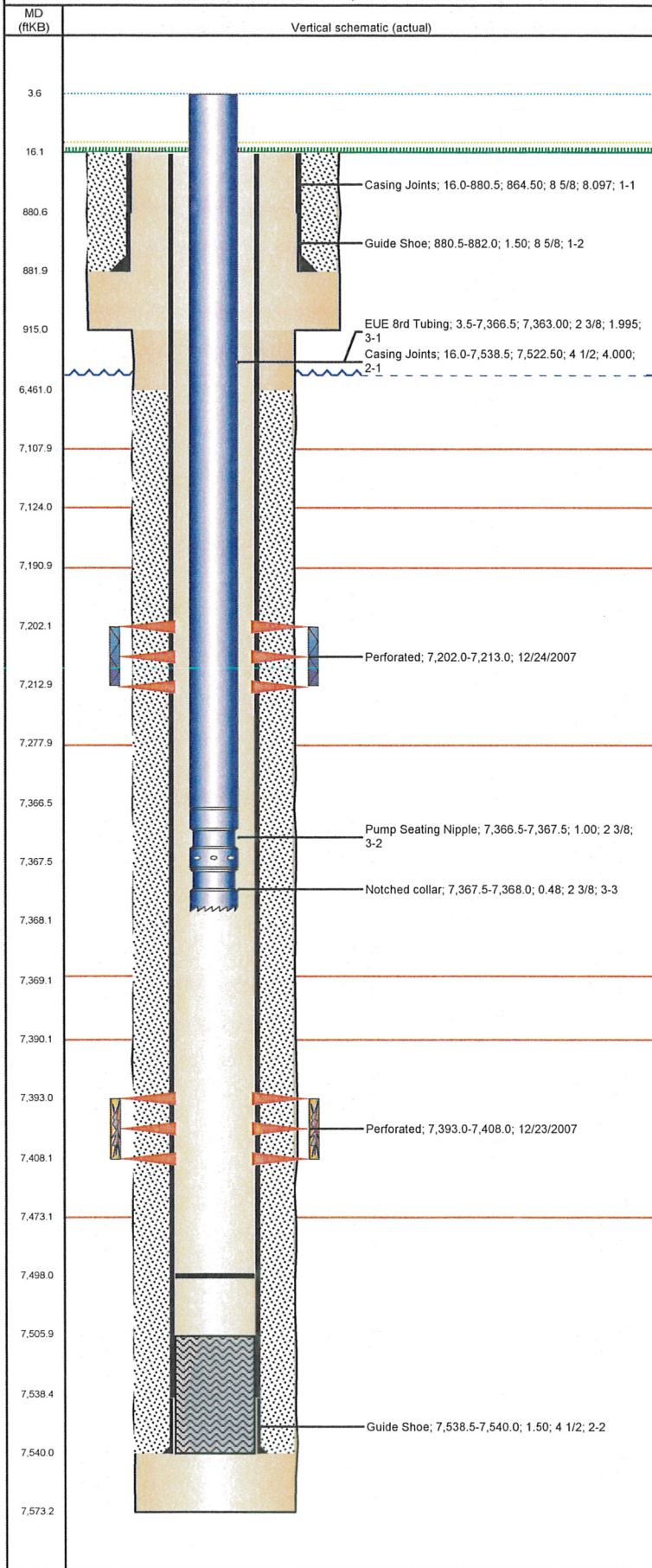


Frac Wellbore Schematic Report

Well Name: HOLLAR 30-34

VERTICAL - ORIGINAL HOLE, 6/21/2012 2:35:09 PM



Well Header

API 05-123-26060	Business Unit WATTENBERG	District 15	Well Config VERTICAL
Original KB Elevation (ft) 4,943.00	KB - GL / MSL (ftKB) 16.00	Spud Date 9/29/2007	P & A Date

Comment

Directions To Well

WCR 76 & WCR 23, EAST 1.5 MILES, NORTH & NORTHWEST 0.1 MILES, EAST 300' INTO

Current PBTD (ftKB)

ORIGINAL HOLE - 7,498.0

Surface Location (Congressional)

Quarter 1	Quarter 2	Quarter 3	Quarter 4	Section	Township	Twnshp N...	Range	Rng E/W Dir
		SE	SW	30	7	N	66	W

Bottom Hole Location

North-South Distance (ft)	From N or S Line	East-West Distance (ft)	From E or W Line

Plug Back Total Depths

Date	Depth (ftKB)	Method	Com
10/3/2007	7,522.0	CASING TALLY	SHOE
10/4/2007	7,506.0	CASED HOLE LOG	DEPT LOGGER ON CBL

Wellbore Sections

Section Des	Size (in)	Act Top (ftKB)	Act Btm (ftKB)
SURFACE	12 1/4	16.0	915.0
PRODUCTION	7 7/8	915.0	7,573.0

Zone Statuses

Zone Name	Status Date	Status	Job
CODELL	1/22/2008	PR	DRILLING/COMPLETION - ORIGINAL, 9/29/2007 00:00
CODELL	1/9/2012	PR	RE-FRAC, 11/22/2011 00:00
NIOBRARA	1/22/2008	PR	DRILLING/COMPLETION - ORIGINAL, 9/29/2007 00:00

Casing Strings

Csg Des	Run Date	OD (in)	Wt/Len (lb/ft)	Grade	Top (ftKB)	Set Depth (ftKB)
Surface	9/29/2007	8 5/8	24.00	I-80	16.0	882.0
Production	10/3/2007	4 1/2	11.60	N-80	16.0	7,540.0

Cement

Des	Top (ftKB)	Btm (ftKB)
SURFACE CASING CEMENT	16.0	882.0
PRODUCTION CASING CEMENT	6,461.0	7,540.0

Tubing Components

Item Des	OD (in)	Wt (lb/ft)	Grade	Jts	Len (ft)
EUE 8rd Tubing	2 3/8	4.70	J-55	239	7,363.00
Pump Seating Nipple	2 3/8			1	1.00
Notched collar	2 3/8			1	0.48

Perforation Data

Zone	Bnch/St g	Entered Shot Total	Top (ftKB)	Btm (ftKB)	Date
NIOBRARA, ORIGINAL HOLE	B	44	7,202.0	7,213.0	12/24/2007
CODELL, ORIGINAL HOLE		60	7,393.0	7,408.0	12/23/2007

Stimulations & Treatments

Bnch/Stg	Date	Zone	Primary Job Type
	12/24/2007	CODELL, ORIGINAL HOLE	DRILLING/COMPLETION - ORIGINAL

Comment

Total Add Amount Proppant 258531 lb	Total Clean Volume...	Vol Slurry Tot (gal) 85428.00	Vol Gas Tot (MCF)
Avg Treat Pressure (psi) 4,120.0	Max Treat Pressure (psi) 4,566.0	Avg Treat Rate (bbl/min) 26.80	Max Treat Rate (bbl/min)

Bnch/Stg	Date	Zone	Primary Job Type
B	12/24/2007	NIOBRARA, ORIGINAL HOLE	DRILLING/COMPLETION - ORIGINAL

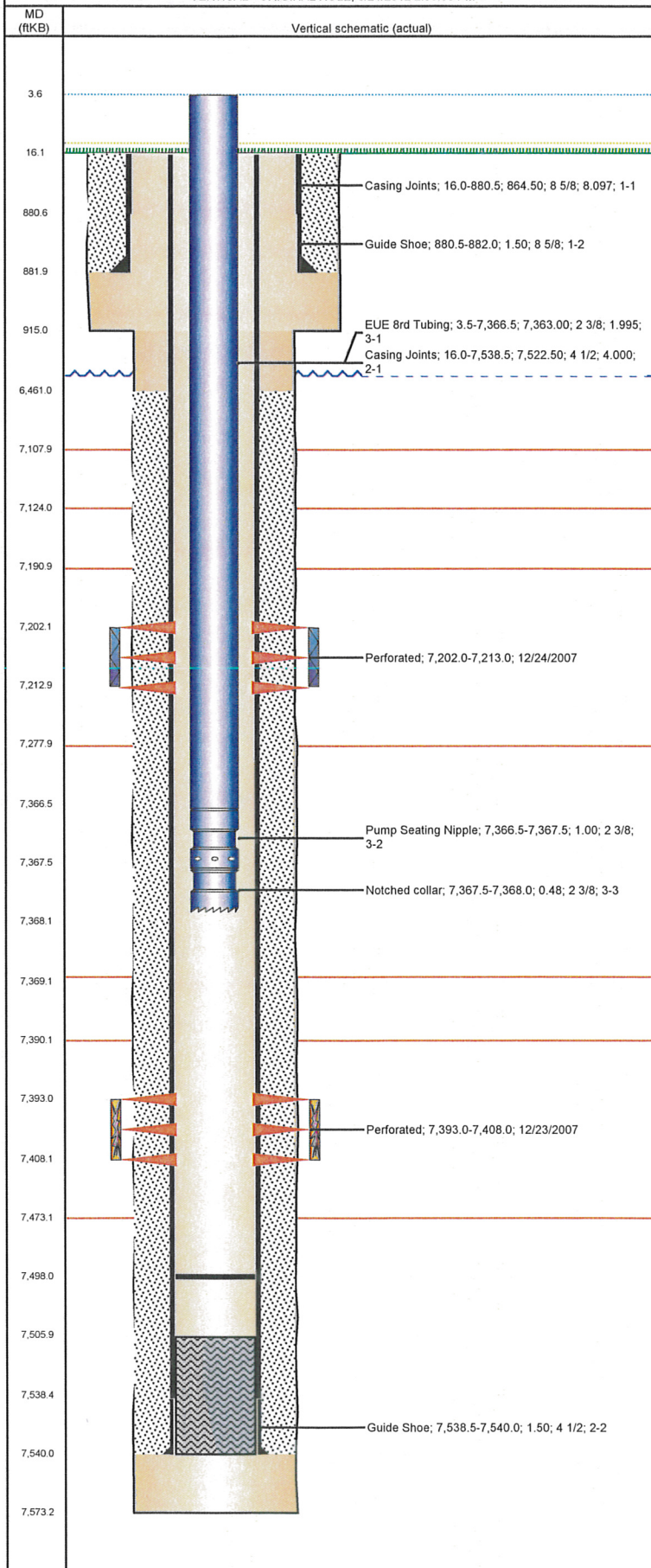
Comment

UNABLE TO BREAK FORMATION NIO FRAC ABORTED

Total Add Amount	Total Clean Volume...	Vol Slurry Tot (gal) 1008.00	Vol Gas Tot (MCF)
Avg Treat Pressure (psi)	Max Treat Pressure (psi)	Avg Treat Rate (bbl/min)	Max Treat Rate (bbl/min)

Well Name: HOLLAR 30-34

VERTICAL - ORIGINAL HOLE, 6/21/2012 2:35:09 PM



Stimulations & Treatments

Bnch/Stg	Date	Zone	Primary Job Type
	11/22/2011	CODELL, ORIGINAL HOLE	RE-FRAC
Comment			
(CODELL REFRAC): 5 min SI 3888 JOB WENT AS PLANNED			
Total Add Amount	Total Clean Volume...	Vol Slurry Tot (gal)	Vol Gas Tot (MCF)
	130757.76	141689.10	
Avg Treat Pressure (psi)	Max Treat Pressure (psi)	Avg Treat Rate (bbl/min)	Max Treat Rate (bbl/min)
5,112.0	6,421.0	14.66	15.02

Other In Hole

Run Date	Des	OD (in)	Top (ftKB)	Btm (ftKB)

Logs

Date	Type	Top (ftKB)	Btm (ftKB)
10/4/2007	COMPENSATED DENSITY	3,750.0	7,553.0
10/4/2007	INDUCTION	16.0	7,573.0
12/20/2007	SONIC	6,300.0	7,504.0