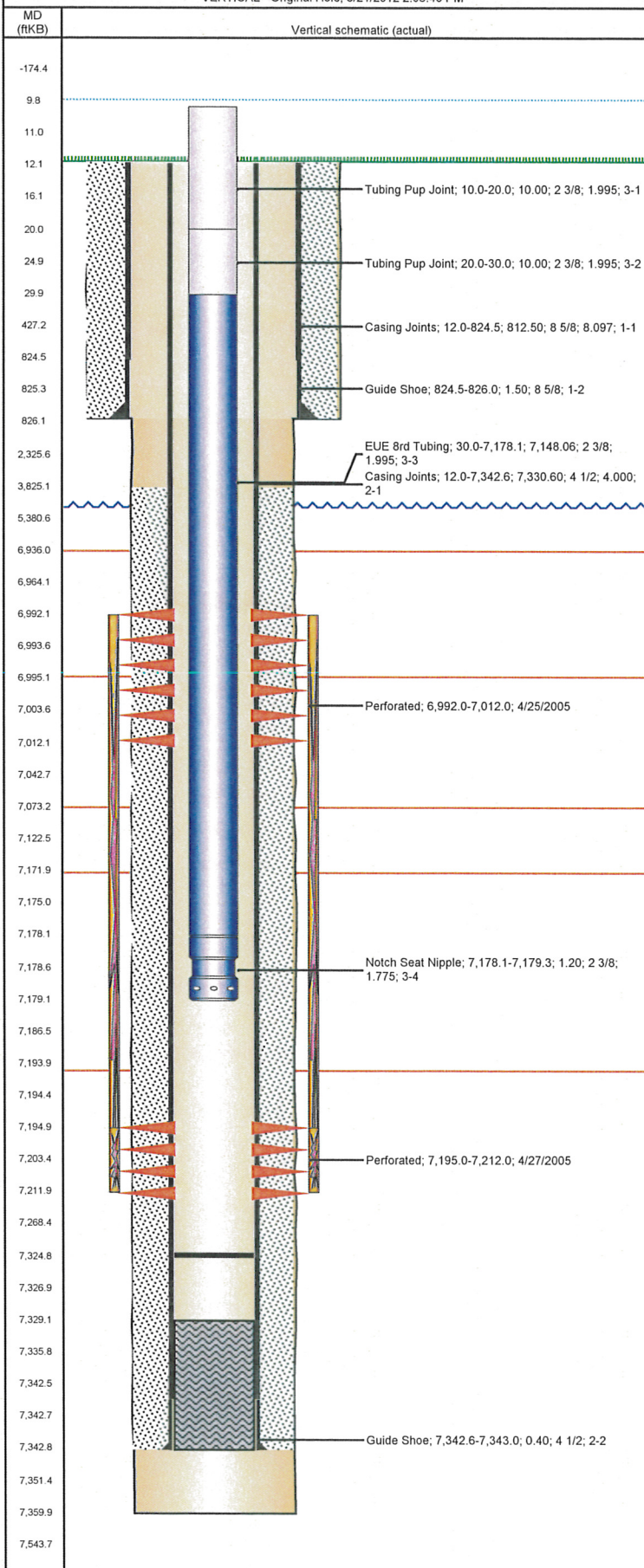


Well Name: DUNBAR 18-34

VERTICAL - Original Hole, 6/21/2012 2:06:40 PM



Well Header

API 05-123-22745	Business Unit WATTENBERG	District 15	Well Config VERTICAL
Original KB Elevation (ft) 4,827.00	KB - GL / MSL (ftKB) 12.00	Spud Date 4/5/2005	P & A Date
Comment			

Directions To Well

HWY 392 & WCR 25, NORTH 2/10, EAST 4/10, SOUTH 1/10 INTO.

Current PBTD (ftKB)

Original Hole - 7,324.7

Surface Location (Congressional)

Quarter 1	Quarter 2	Quarter 3	Quarter 4	Section	Township	Twnshp N...	Range	Rng E/W Dir
		SE	SW	18	6	N	66	W

Bottom Hole Location

North-South Distance (ft)	From N or S Line	East-West Distance (ft)	From E or W Line

Plug Back Total Depths

Date	Depth (ftKB)	Method	Com
4/10/2005	7,324.0	CASED HOLE LOG	DEPTH LOGGER ON CBL
4/10/2005	7,329.0	CASING TALLY	SHOE JOINT

Wellbore Sections

Section Des	Size (in)	Act Top (ftKB)	Act Btm (ftKB)
SURFACE	12 1/4	12.0	826.0
PRODUCTION	7 7/8	826.0	7,360.0

Zone Statuses

Zone Name	Status Date	Status	Job
NIOBRARA	6/15/2005	PR	DRILLING/COMPLETION - ORIGINAL, 4/5/2005 00:00
CODELL	6/15/2005	PR	DRILLING/COMPLETION - ORIGINAL, 4/5/2005 00:00
CODELL	11/28/2011	PR	RE-FRAC, 10/19/2011 08:00

Casing Strings

Csg Des	Run Date	OD (in)	Wt/Len (lb/ft)	Grade	Top (ftKB)	Set Depth (ftKB)
Surface	4/5/2005	8 5/8	24.00	?	12.0	826.0
Production	4/10/2005	4 1/2	11.60	M-80	12.0	7,343.0

Cement

Des	Top (ftKB)	Btm (ftKB)
SURFACE CASING CEMENT	12.0	826.0
PRODUCTION CASING CEMENT	3,825.0	7,343.0

Tubing Components

Item Des	OD (in)	Wt (lb/ft)	Grade	Jts	Len (ft)
Tubing Pup Joint	2 3/8	4.70	J-55	1	10.00
Tubing Pup Joint	2 3/8	4.70	J-55	1	10.00
EUE 8rd Tubing	2 3/8	4.70	J-55	237	7,148.06
Notch Seat Nipple	2 3/8	4.70	N-80	1	1.20

Perforation Data

Zone	Bnch/St g	Entered Shot Total	Top (ftKB)	Btm (ftKB)	Date
NIOBRARA, Original Hole	B	80	6,992.0	7,012.0	4/25/2005
CODELL, Original Hole		68	7,195.0	7,212.0	4/27/2005

Stimulations & Treatments

Bnch/Stg	Date	Zone	Primary Job Type
	4/26/2005	NIOBRARA, Original Hole	DRILLING/COMPLETION - ORIGINAL
Comment			

Total Add Amount	Total Clean Volume...	Vol Slurry Tot (gal) 1008.00	Vol Gas Tot (MCF)
Avg Treat Pressure (psi)	Max Treat Pressure (psi)	Avg Treat Rate (bbl/min)	Max Treat Rate (bbl/min)

Bnch/Stg	Date	Zone	Primary Job Type
	4/28/2005	NIOBRARA-CODELL, Original Hole	DRILLING/COMPLETION - ORIGINAL
Comment			

CDL/NIO FRAC'D W/O ISOLATION BTWN FORMATIONS

Total Add Amount	Total Clean Volume...	Vol Slurry Tot (gal) 200970.01	Vol Gas Tot (MCF)
Proppant Ottawa 350040 lb			
Avg Treat Pressure (psi) 4,337.0	Max Treat Pressure (psi) 5,080.0	Avg Treat Rate (bbl/min) 50.50	Max Treat Rate (bbl/min)

Well Name: DUNBAR 18-34

VERTICAL - Original Hole, 6/21/2012 2:06:40 PM

Stimulations & Treatments

Bnch/Stg	Date	Zone	Primary Job Type
	10/19/2011	CODELL, Original Hole	RE-FRAC
Comment (CODELL RF): ISIP 3122. 5 MIN 1464. JOB PUMPED PER DESIGN. WELLS AVERAGES: VISC 23.4 CP, PH 10.25, TEMP 71.58 F. POST 5MIN 3394 PSI.CODELL RF			
Total Add Amount		Total Clean Volume...	Vol Slurry Tot (gal)
Ottawa 0		138343.80	134698.21
Avg Treat Pressure (psi)	Max Treat Pressure (psi)	Avg Treat Rate (bbl/min)	Max Treat Rate (bbl/min)
4,817.0	5,145.0	4,817.00	5,145.00

Other In Hole

Run Date	Des	OD (in)	Top (ftKB)	Btm (ftKB)

Logs

Date	Type	Top (ftKB)	Btm (ftKB)
4/10/2005	COMPENSATED DENSITY	3,500.0	7,337.0
4/10/2005	INDUCTION	801.0	7,357.0
4/26/2005	CBL/CCL/GR	3,700.0	7,322.0

