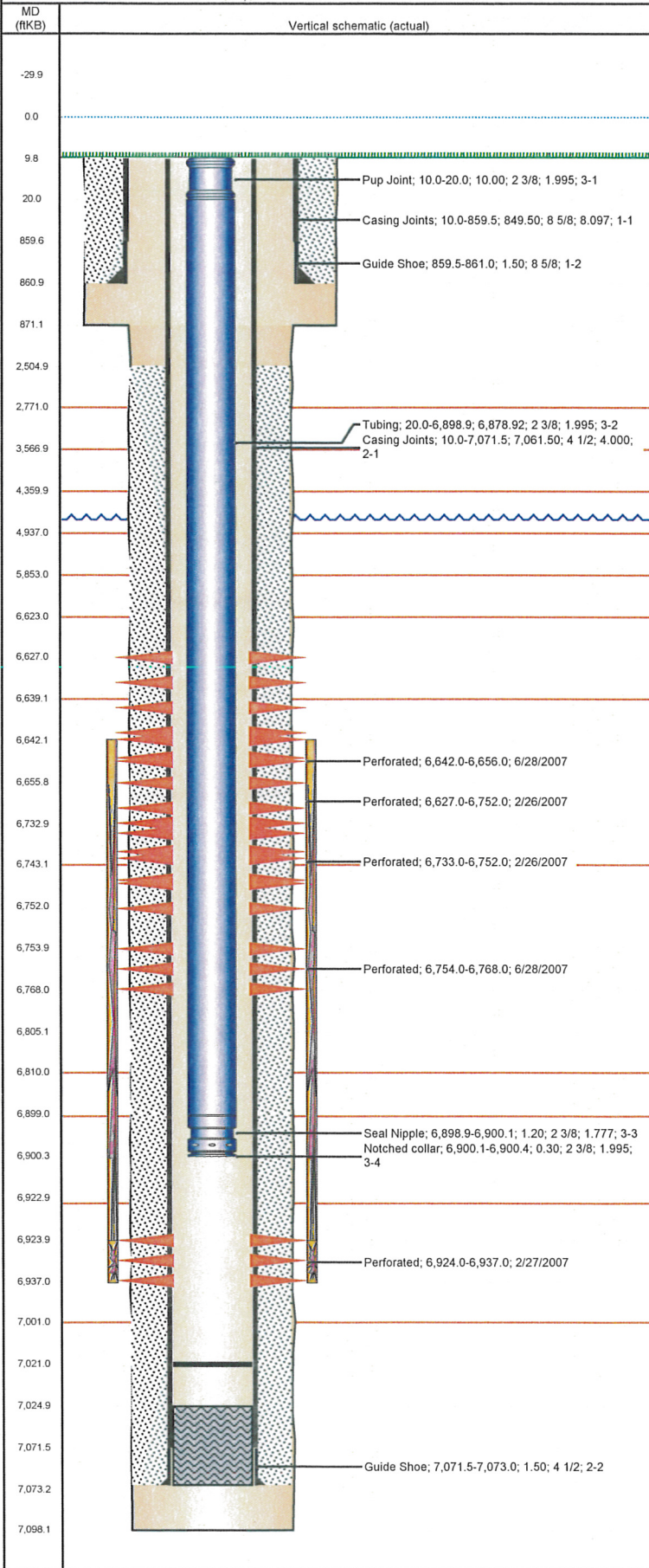


Frac Wellbore Schematic Report

Well Name: COCKROFT USX A11-02

VERTICAL - ORIGINAL HOLE, 6/21/2012 1:49:27 PM



Well Header

API 05-123-24709	Business Unit WATTENBERG	District 15	Well Config VERTICAL
Original KB Elevation (ft) 4,749.00	KB - GL / MSL (ftKB) 10.00	Spud Date 2/8/2007	P & A Date

Comment

THE CBL USED TO PERF NIO WAS INCORRECT - DISCREPANCY IN FILE ON WHICH ARE CORRECT

Directions To Well

CR 57 & CR 72, EAST 6/10 THS MILE, SOUTH 1/10 THS INTO LOC.

Current PBTD (ftKB)

ORIGINAL HOLE - 7,021.0

Surface Location (Congressional)

Quarter 1	Quarter 2	Quarter 3	Quarter 4	Section	Township	Twnshp N...	Range	Rng E/W Dir
		NW	NE	11	6	N	64	W

Bottom Hole Location

North-South Distance (ft)	From N or S Line	East-West Distance (ft)	From E or W Line

Plug Back Total Depths

Date	Depth (ftKB)	Method	Com
2/11/2007	7,056.0	CASING TALLY	FLOAT COLLAR
2/27/2007	7,025.0	CASED HOLE LOG	DEPTH LOGGER ON CBL

Wellbore Sections

Section Des	Size (in)	Act Top (ftKB)	Act Btm (ftKB)
SURFACE	12 1/4	10.0	871.0
PRODUCTION	7 7/8	871.0	7,098.0

Zone Statuses

Zone Name	Status Date	Status	Job
NIOBRARA	3/7/2007	PR	DRILLING/COMPLETION - ORIGINAL, 2/8/2007 00:00
CODELL	3/7/2007	PR	DRILLING/COMPLETION - ORIGINAL, 2/8/2007 00:00
CODELL	1/17/2012	PR	RE-FRAC, 12/1/2011 06:00

Casing Strings

Csg Des	Run Date	OD (in)	Wt/Len (lb/ft)	Grade	Top (ftKB)	Set Depth (ftKB)
Surface	2/8/2007	8 5/8	?		10.0	861.0
Production	2/12/2007	4 1/2	11.60	M-80	10.0	7,073.0

Cement

Des	Top (ftKB)	Btm (ftKB)
SURFACE CASING CEMENT	10.0	861.0
PRODUCTION CASING CEMENT	2,505.0	7,073.0

Tubing Components

Item Des	OD (in)	Wt (lb/ft)	Grade	Jts	Len (ft)
Pup Joint	2 3/8	4.70	J-55	1	10.00
Tubing	2 3/8	4.70	J-55	212	6,878.92
Seal Nipple	2 3/8	4.70	N-80	1	1.20
Notched collar	2 3/8	4.70	J-55	1	0.30

Perforation Data

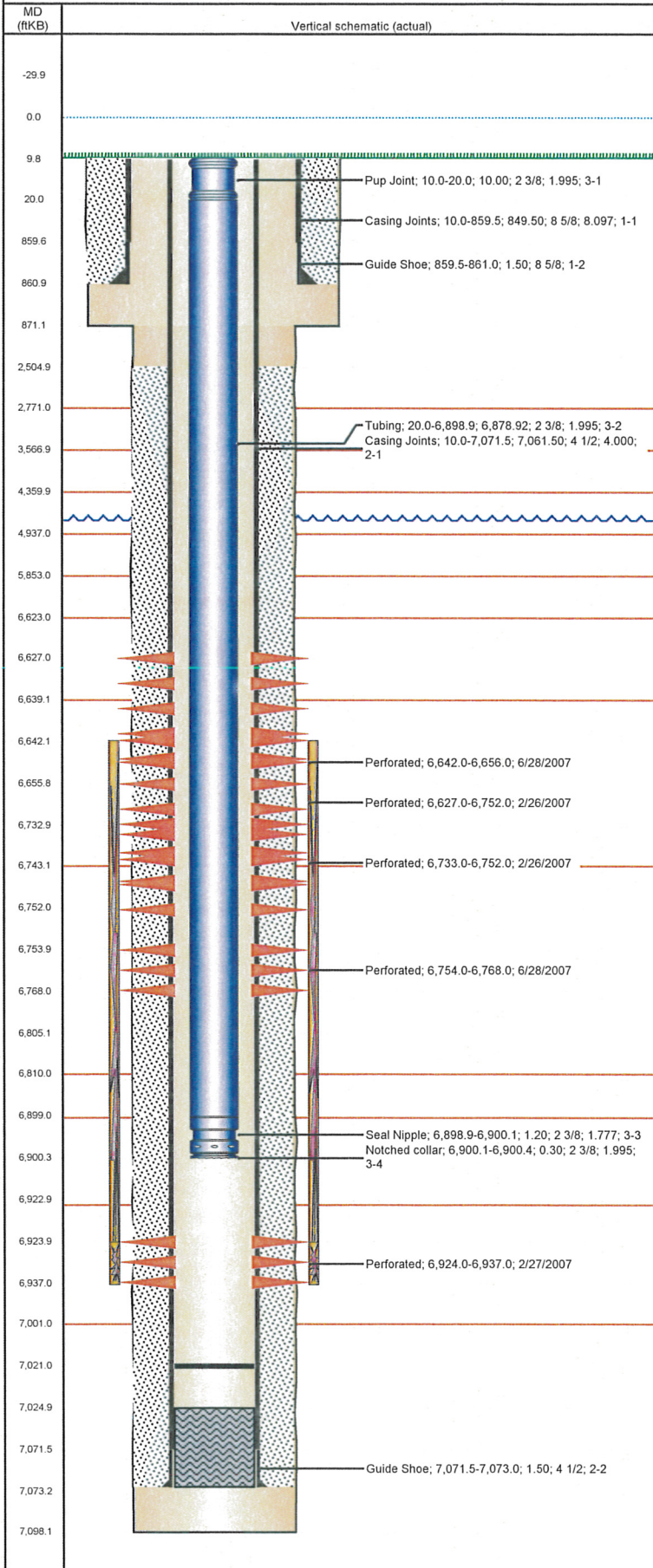
Zone	Bnch/St g	Entered Shot Total	Top (ftKB)	Btm (ftKB)	Date
NIOBRARA, ORIGINAL HOLE		56	6,627.0	6,752.0	2/26/2007
NIOBRARA, ORIGINAL HOLE		48	6,642.0	6,656.0	6/28/2007
NIOBRARA, ORIGINAL HOLE		72	6,733.0	6,752.0	2/26/2007
NIOBRARA, ORIGINAL HOLE		56	6,754.0	6,768.0	6/28/2007
CODELL, ORIGINAL HOLE		52	6,924.0	6,937.0	2/27/2007

Simulations & Treatments

Bnch/Stg	Date	Zone	Primary Job Type
	3/7/2007	NIOBRARA-CODELL, ORIGINAL HOLE	
Comment TRIPLE ENTRY FRAC (ONLY FRAC'D FROM 6642' - 6937' SIMULTANEOUSLY).			
Total Add Amount Proppant Ottawa 350060 lb	Total Clean Volume...	Vol Slurry Tot (gal) 162582.01	Vol Gas Tot (MCF)
Avg Treat Pressure (psi) 4,775.0	Max Treat Pressure (psi) 4,877.0	Avg Treat Rate (bbl/min) 22.70	Max Treat Rate (bbl/min) 24.20

Well Name: COCKROFT USX A11-02

VERTICAL - ORIGINAL HOLE, 6/21/2012 1:49:27 PM



Stimulations & Treatments

Brnch/Stg	Date	Zone	Primary Job Type
	12/14/2011	CODELL, ORIGINAL HOLE	RE-FRAC
<p>Comment (CODELL) OPEN WELL WITH 58 PSI, BACKSIDE WITH 17 PSI, FORMATION BREAK 2912 PSI. PRE-TREATMENT ISIP= 2679 PSI, 5 MIN= 1840 PSI, FRAC GRAD= .82 PSI/FT. POST-TREATMENT ISIP= 3543 PSI, 5 MIN= 3456 PSI, AVGS: VISC= 24.3 CP, PH= 10.23, TEMP= 69.3 F, PRESS= 4657 PSI, RATE= 15.1 BPM, MAXIMUM: PRESS= 5180 PSI, RATE= 15.4 BPM. JOB WENT WELL.</p>			
Total Add Amount	Total Clean Volume...	Vol Slurry Tot (gal)	Vol Gas Tot (MCF)
Ottawa 249019.5 lb	133543.20	144799.21	
Avg Treat Pressure (psi)	Max Treat Pressure (psi)	Avg Treat Rate (bbl/min)	Max Treat Rate (bbl/min)
4,657.0	5,180.0	15.10	15.40

Other In Hole

Run Date	Des	OD (in)	Top (ftKB)	Btm (ftKB)

Logs

Date	Type	Top (ftKB)	Btm (ftKB)
2/12/2007	COMPENSATED DENSITY	2,640.0	7,078.0
2/12/2007	INDUCTION	10.0	7,098.0
2/27/2007	CEMENT BOND	2,369.0	7,023.0