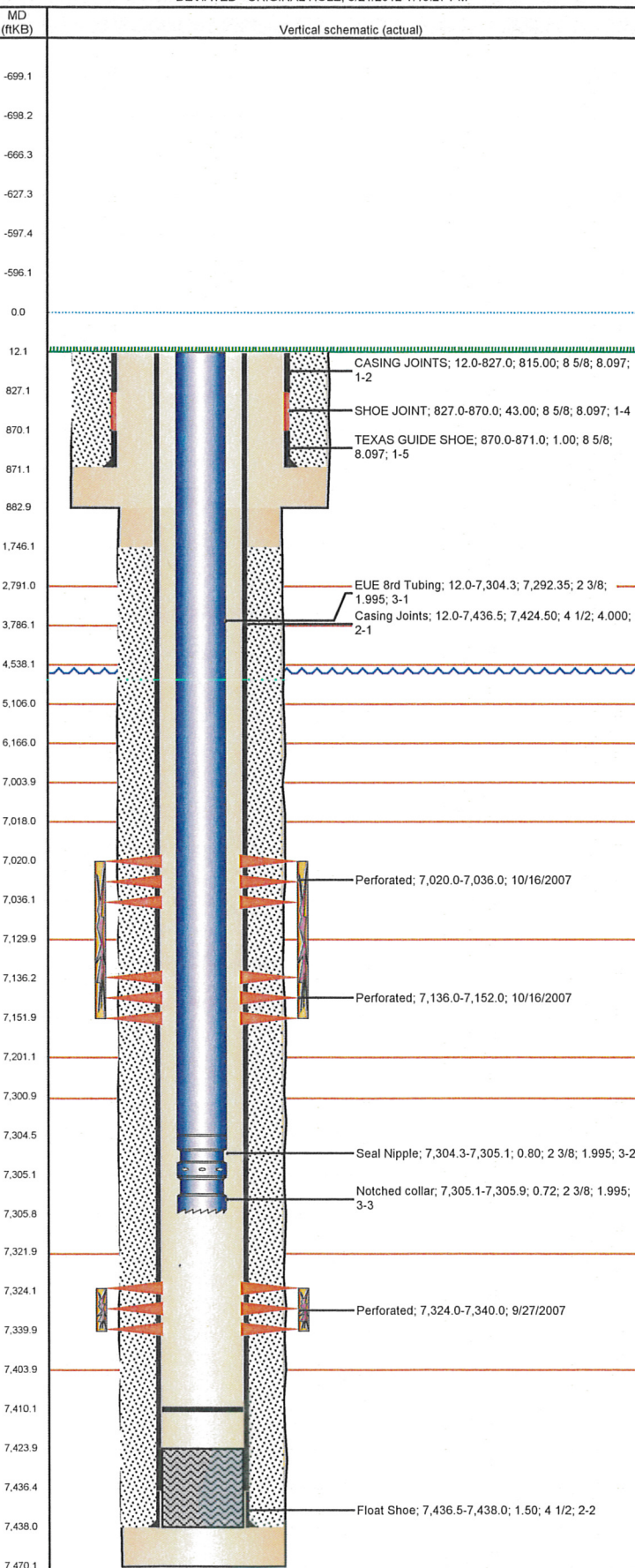


# Frac Wellbore Schematic Report

Well Name: ATREYU G02-30

DEVIATED - ORIGINAL HOLE, 6/21/2012 1:40:27 PM



## Well Header

API	Business Unit	District	Well Config
05-123-25235	WATTENBERG	15	DEVIATED
Original KB Elevation (ft)	KB - GL / MSL (ftKB)	Spud Date	P & A Date
4,672.00	12.00	8/6/2007	

Comment  
BHL: NWNW SEC 2-4N-65W

Directions To Well  
CR 43/50,N.5/10,E.7/10 TO CG.,SW.2/10 INTO LOC.

Current PBTD (ftKB)  
ORIGINAL HOLE - 7,410.0

## Surface Location (Congressional)

Quarter 1	Quarter 2	Quarter 3	Quarter 4	Section	Township	Twnshp N...	Range	Rng E/W Dir
		NE	SE	34	5	N	65	W

## Bottom Hole Location

North-South Distance (ft)	From N or S Line	East-West Distance (ft)	From E or W Line
112.0	FNL	85.0	FWL

## Plug Back Total Depths

Date	Depth (ftKB)	Method	Com
8/11/2007	7,421.0	CASING TALLY	FLOAT COLLAR
9/11/2007	7,424.0	CASED HOLE LOG	DEPTH LOGGER ON CBL

## Wellbore Sections

Section Des	Size (in)	Act Top (ftKB)	Act Btm (ftKB)
SURFACE	12 1/4	12.0	883.0
PRODUCTION	7 7/8	883.0	7,470.0

## Zone Statuses

Zone Name	Status Date	Status	Job
CODELL	11/5/2007	PR	DRILLING/COMPLETION - ORIGINAL, 8/6/2007 00:00
CODELL	11/22/2011	PR	RE-FRAC, 9/27/2011 06:00
NIOBRARA	11/5/2007	PR	DRILLING/COMPLETION - ORIGINAL, 8/6/2007 00:00

## Casing Strings

Csg Des	Run Date	OD (in)	Wt/Len (lb/ft)	Grade	Top (ftKB)	Set Depth (ftKB)
Surface	8/6/2007	8 5/8	24.00	J-55	12.0	871.0
Production	8/11/2007	4 1/2	11.60	M-80	12.0	7,438.0

## Cement

Des	Top (ftKB)	Btm (ftKB)
	12.0	871.0
Production Casing Cement	1,746.0	7,438.0

## Tubing Components

Item Des	OD (in)	Wt (lb/ft)	Grade	Jts	Len (ft)
EUE 8rd Tubing	2 3/8	4.70	J-55	234	7,292.35
Seal Nipple	2 3/8	4.70	J-55	1	0.80
Notched collar	2 3/8	4.70	J-55	1	0.72

## Perforation Data

Zone	Bnch/St g	Entered Shot Total	Top (ftKB)	Btm (ftKB)	Date
NIOBRARA, ORIGINAL HOLE			7,020.0	7,036.0	10/16/2007
NIOBRARA, ORIGINAL HOLE			7,136.0	7,152.0	10/16/2007
CODELL, ORIGINAL HOLE			7,324.0	7,340.0	9/27/2007

## Stimulations & Treatments

Bnch/Stg Date	Zone	Primary Job Type
10/16/2007	CODELL, ORIGINAL HOLE	DRILLING/COMPLETION - ORIGINAL

Total Add Amount	Total Clean Volume...	Vol Slurry Tot (gal)	Vol Gas Tot (MCF)
Proppant 269800 lb		127901.76	
Avg Treat Pressure (psi)	Max Treat Pressure (psi)	Avg Treat Rate (bbl/min)	Max Treat Rate (bbl/min)
3,880.0	4,517.0	25.80	26.80

Bnch/Stg Date	Zone	Primary Job Type
10/16/2007	NIOBRARA, ORIGINAL HOLE	DRILLING/COMPLETION - ORIGINAL

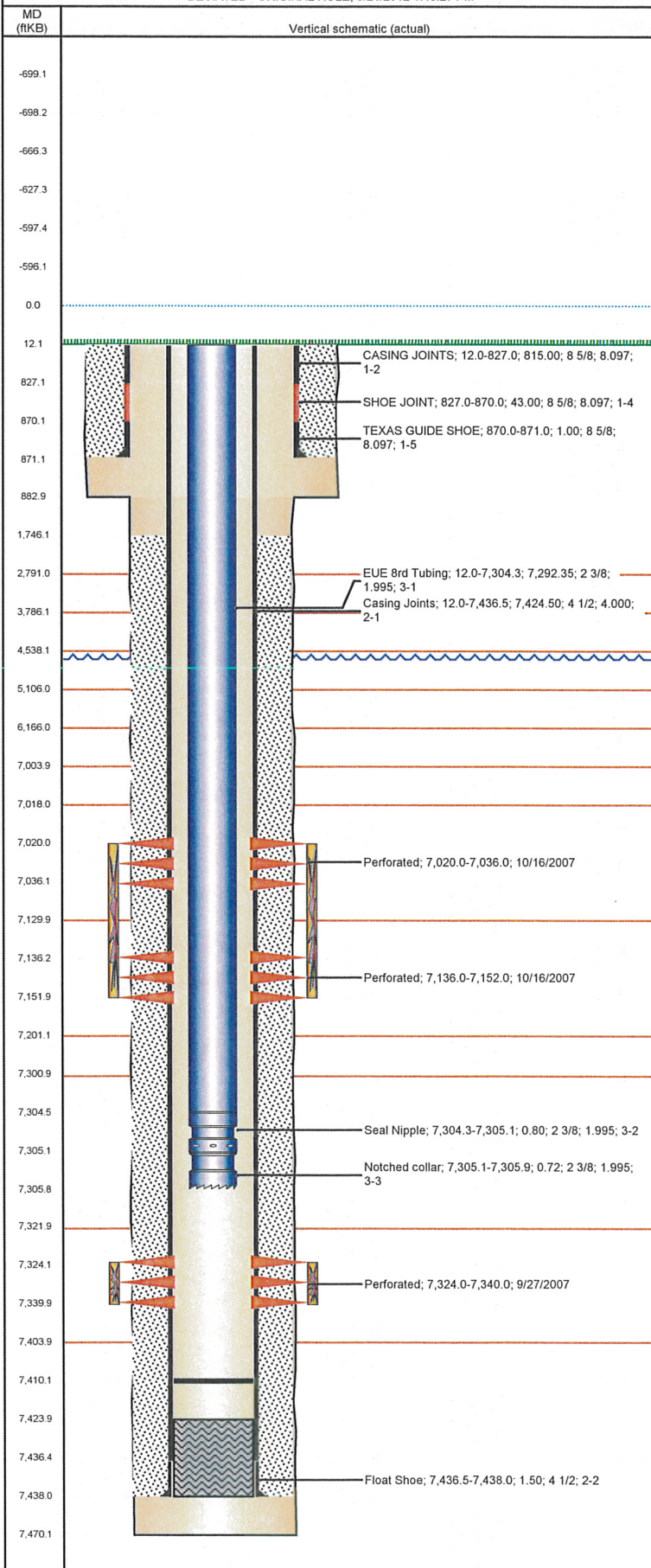
Comment  
LOST FLOW METER 99 BBLS INTO THE FLUSH; ESTIMATED THE REMAINDER OF THE FLUSH

Total Add Amount	Total Clean Volume...	Vol Slurry Tot (gal)	Vol Gas Tot (MCF)
Proppant 249520 lb		170669.94	
Avg Treat Pressure (psi)	Max Treat Pressure (psi)	Avg Treat Rate (bbl/min)	Max Treat Rate (bbl/min)
4,217.0	4,733.0	39.50	51.20



**Well Name: ATREYU G02-30**

DEVIATED - ORIGINAL HOLE, 6/21/2012 1:40:27 PM



## Stimulations & Treatments

Bnch/Stg	Date	Zone	Primary Job Type
CODELL	10/14/2011	NIOBRARA, ORIGINAL HOLE	RE-FRAC
Comment (CODELL RF) ISIP 2465, 5 MIN 1405. JOB WENT WELL WITH NO ISSUES. AVERAGES: PRESSURE 4644, RATE 14.4, VISC 24.42, pH 10.19, TEMP 68.2. POST ISIP 3570, POST 5 MIN 3004, NOLTE POSITIVE.			
Total Add Amount	Total Clean Volume...	Vol Slurry Tot (gal)	Vol Gas Tot (MCF)
Proppant Ottawa 251673 lb	131539.80	142959.60	
Avg Treat Pressure (psi)	Max Treat Pressure (psi)	Avg Treat Rate (bbl/min)	Max Treat Rate (bbl/min)
4,644.0	4,931.0	14.40	14.70

## Other In Hole

Run Date	Des	OD (in)	Top (ftKB)	Btm (ftKB)

## Logs

Date	Type	Top (ftKB)	Btm (ftKB)
9/11/2007	CBL/CCL/GR	12.5	7,419.0
9/12/2007	PULSED NEUTRON	871.0	7,420.0