

Well Name: **WELLS RANCH 42-31**

DEVIATED - ORIGINAL HOLE, 6/21/2012 1:31:29 PM

## Well Header

API 05-123-23415	Business Unit WATTENBERG	District 15	Well Config DEVIATED
Original KB Elevation (ft) 4,642.00	KB - GL / MSL (ftKB) 14.00	Spud Date 4/5/2006	P & A Date

Comment  
Poor bond 4750-6000, 7/21/06 DRILLED UP PLUG & C/O TO 6881'

Directions To Well  
WCR 67 & WCR 68, E 0.2, S 2.3, NW 0.4, W 2.2, S 0.3 INTO LOCATION.

Current PBTD (ftKB)  
ORIGINAL HOLE - 6,880.0

## Surface Location (Congressional)

Quarter 1	Quarter 2	Quarter 3	Quarter 4	Section	Township	Twnshp N...	Range	Rng E/W Dir
	SE	NE		31	6	N	63	W

## Bottom Hole Location

North-South Distance (ft)	From N or S Line	East-West Distance (ft)	From E or W Line

## Plug Back Total Depths

Date	Depth (ftKB)	Method	Com
4/11/2006	6,873.0	CASING TALLY	FLOAT SHOE
4/17/2006	6,863.0	CASED HOLE LOG	DEPTH-LOGGER/CBL

## Wellbore Sections

Section Des	Size (in)	Act Top (ftKB)	Act Btm (ftKB)
SURFACE	12 1/4	14.0	686.0
PRODUCTION	7 7/8	686.0	6,900.0

## Zone Statuses

Zone Name	Status Date	Status	Job
NIOBRARA	6/21/2006	PR	DRILLING/COMPLETION - ORIGINAL, 4/1/2006 00:00
CODELL	6/21/2006	PR	DRILLING/COMPLETION - ORIGINAL, 4/1/2006 00:00
CODELL	10/21/2011	PR	RE-FRAC, 9/14/2011 06:00

## Casing Strings

Csg Des	Run Date	OD (in)	Wt/Len (lb/ft)	Grade	Top (ftKB)	Set Depth (ftKB)
SURFACE	4/5/2006	8 5/8	24.00	J-55	14.0	676.0
PRODUCTION	4/10/2006	4 1/2	11.60	M-80	14.0	6,890.0

## Cement

Des	Top (ftKB)	Btm (ftKB)
Surface Casing Cement	14.0	676.0
Production Casing Cement	3,000.0	6,890.0

## Tubing Components

Item Des	OD (in)	Wt (lb/ft)	Grade	Jts	Len (ft)
Pup Joint	2 3/8	4.70	J-55	1	10.00
EUE 8rd Tubing	2 3/8	4.70	J-55	204	6,693.59
Seal Nipple	2 3/8	4.70	N-80	1	1.10
Notched collar	2 3/8	4.70	J-55	1	0.40

## Perforation Data

Zone	Bnch/St g	Entered Shot Total	Top (ftKB)	Btm (ftKB)	Date
NIOBRARA, ORIGINAL HOLE	A	84	6,460.0	6,474.0	6/19/2006
NIOBRARA, ORIGINAL HOLE	B	84	6,566.0	6,580.0	6/19/2006
CODELL, ORIGINAL HOLE		44	6,735.0	6,746.0	4/20/2006

## Stimulations & Treatments

Bnch/Stg	Date	Zone	Primary Job Type
	6/19/2006	NIOBRARA, ORIGINAL HOLE	DRILLING/COMPLETION - ORIGINAL

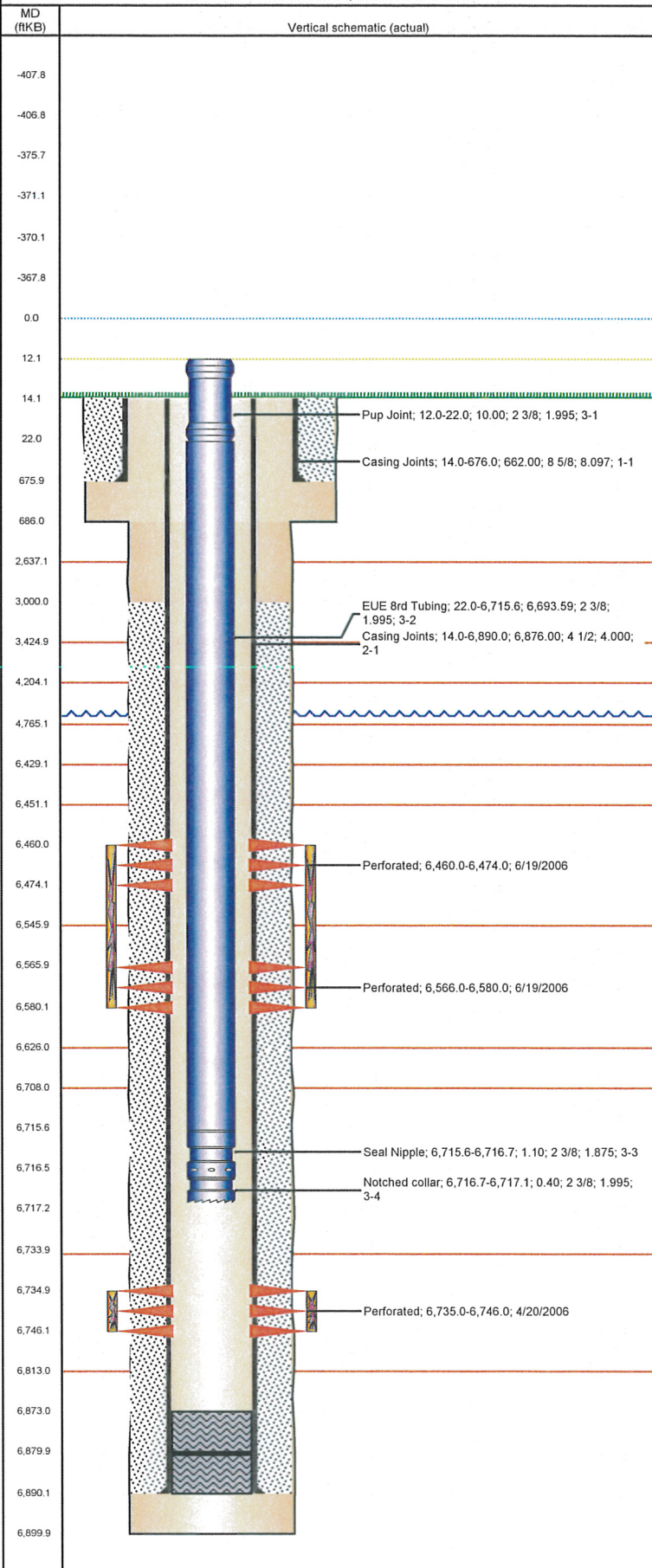
Total Add Amount Proppant 238080 lb; Proppant SB Excel 12000 lb	Total Clean Volume...	Vol Slurry Tot (gal) 170058.01	Vol Gas Tot (MCF)
Avg Treat Pressure (psi) 4,534.0	Max Treat Pressure (psi) 4,933.0	Avg Treat Rate (bbl/min) 51.00	Max Treat Rate (bbl/min) 51.67

Bnch/Stg	Date	Zone	Primary Job Type
	6/19/2006	CODELL, ORIGINAL HOLE	DRILLING/COMPLETION - ORIGINAL

Total Add Amount Proppant Ottawa 271220 lb	Total Clean Volume...	Vol Slurry Tot (gal) 129318.00	Vol Gas Tot (MCF)
Avg Treat Pressure (psi) 3,684.0	Max Treat Pressure (psi) 4,052.0	Avg Treat Rate (bbl/min) 18.70	Max Treat Rate (bbl/min) 19.10

**Well Name: WELLS RANCH 42-31**

DEVIATED - ORIGINAL HOLE, 6/21/2012 1:31:30 PM



Stimulations & Treatments				
Bnch/Stg	Date	Zone	Primary Job Type	
	10/15/2011	CODELL, ORIGINAL HOLE	RE-FRAC	
Comment				
(CODELL RF): HAD TO WAIT ON SAND TO BE DELEIVERED TO LOC. OPERATIONALLY ONCE WE GOT GOING, JOB WENT WELL WITH NO ISSUES TO REPORT. AVG VISC=21.8, PH=10.2, TEMP=67.8, PRESSURE=4912, RATE=14.8.				
Total Add Amount		Total Clean Volume...	Vol Slurry Tot (gal)	Vol Gas Tot (MCF)
Proppant Ottawa 251542 lb		130754.40	142136.40	
Avg Treat Pressure (psi)	Max Treat Pressure (psi)	Avg Treat Rate (bbl/min)	Max Treat Rate (bbl/min)	
4,912.0	5,175.0	14.80	15.30	
Other In Hole				
Run Date	Des		OD (in)	Top (ftKB)
				Btm (ftKB)
Logs				
Date	Type		Top (ftKB)	Btm (ftKB)
4/17/2006	CBL/CCL/GR		4,989.0	6,861.0