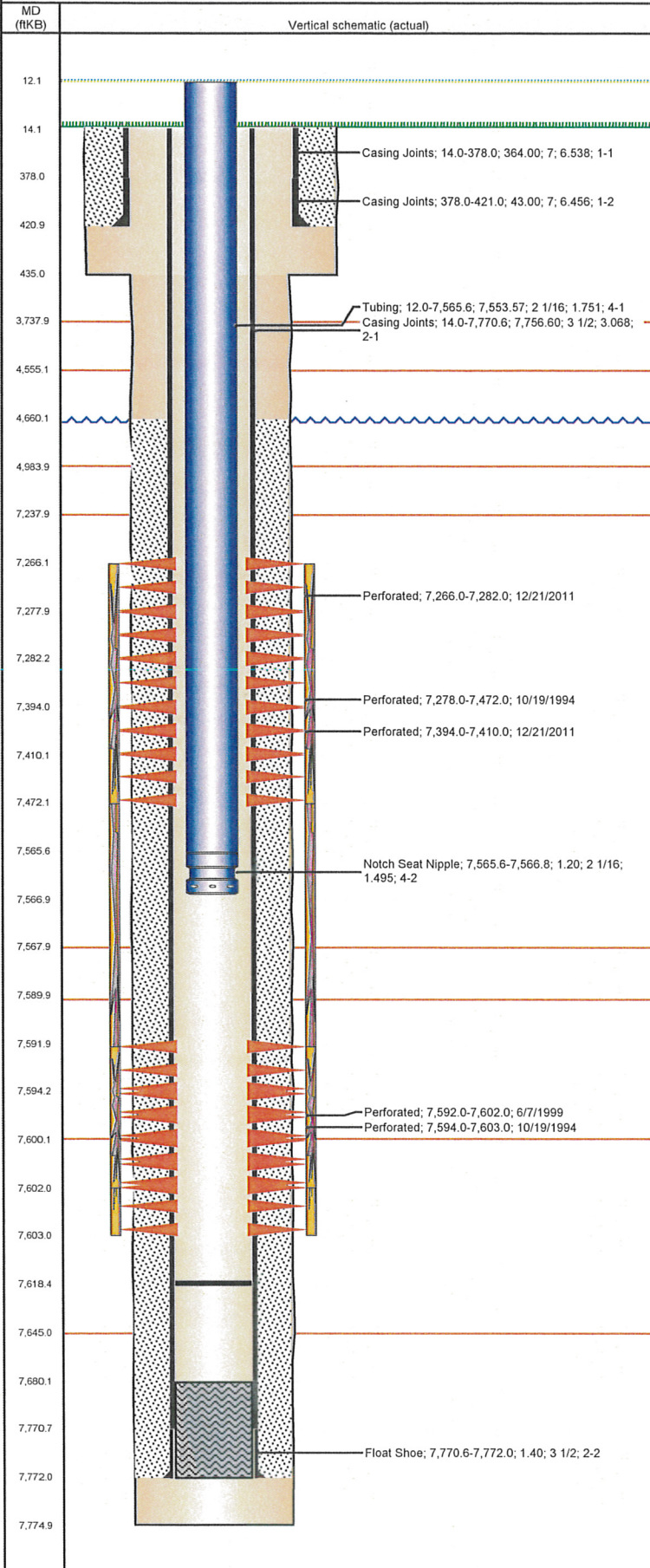


**Well Name: DOS RIOS 34-07H6**

DEVIATED - ORIGINAL HOLE, 6/21/2012 11:58:11 AM

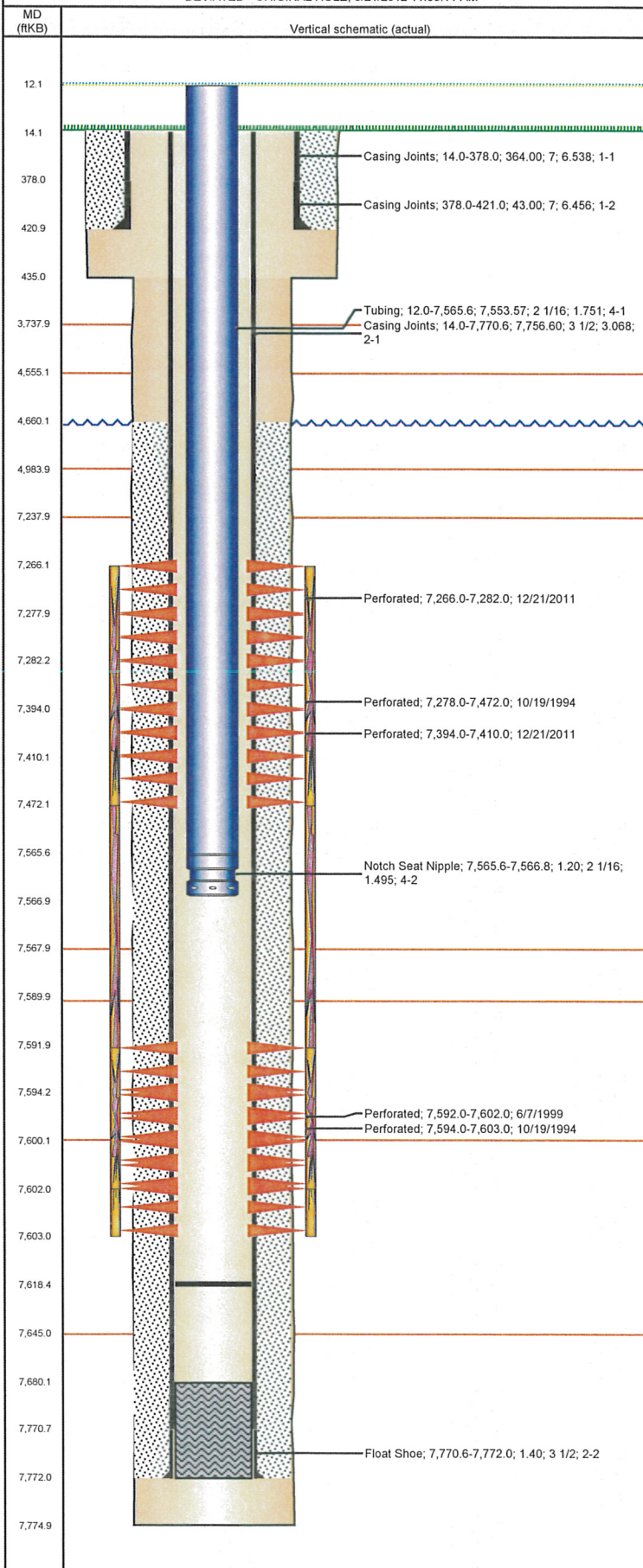


Well Header													
API 05-123-18376		Business Unit WATTENBERG		District 15		Well Config DEVIATED							
Original KB Elevation (ft) 4,684.00		KB - GL / MSL (ftKB) 14.00		Spud Date 9/25/1994		P & A Date							
Comment POSSIBLE COLLAPSED CASING 7588' TO 7603' (IN CODELL PERFS) NOTED DURING 2006 TRIFRAC													
Directions To Well RDS 394 & 33 1/4, NORTH TO T, WEST 3/10, NORTH INTO.													
Current PBTD (ftKB) ORIGINAL HOLE - 7,618.3													
Surface Location (Congressional)													
Quarter 1	Quarter 2	Quarter 3 NE	Quarter 4 SE	Section 34	Township 5 N	Twship N...	Range 66 Rng E/W Dir W						
Bottom Hole Location													
North-South Distance (ft) 2,042.0		From N or S Line FNL		East-West Distance (ft) 2,034.0		From E or W Line FEL							
Plug Back Total Depths													
Date		Depth (ftKB)		Method		Com							
10/14/1994		7,680.0		TAG		GUIDE SHOE							
10/19/1994		7,614.0		CASED HOLE LOG		DEPTH LOGGER							
Wellbore Sections													
Section Des			Size (in)		Act Top (ftKB)		Act Btm (ftKB)						
SURFACE			9 7/8		14.0		435.0						
PRODUCTION			6 1/4		435.0		7,775.0						
Zone Statuses													
Zone Name		Status Date		Status		Job							
CODELL		11/2/1994		PR		DRILLING/COMPLETION - ORIGINAL, 9/25/1994 00:00							
CODELL		6/15/1999		PR		RE-FRAC, 6/3/1999 00:00							
CODELL		11/16/2006		PR		TRI-FRAC, 9/25/2006 00:00							
NIOBRARA		11/2/1994		PR		DRILLING/COMPLETION - ORIGINAL, 9/25/1994 00:00							
NIOBRARA		1/26/2012		PR		RE-FRAC, 12/19/2011 11:00							
Casing Strings													
Csg Des		Run Date		OD (in)		Wt/Len (lb/ft)		Grade		Top (ftKB)		Set Depth (ftKB)	
Surface		9/25/1994		7		17.00		H-40		14.0		421.0	
Production		10/14/1994		3 1/2		7.70		M-70		14.0		7,772.0	
Cement													
Des								Top (ftKB)			Btm (ftKB)		
SURFACE CASING CEMENT								14.0			421.0		
PRODUCTION CASING CEMENT								4,660.0			7,772.0		
Tubing Components													
Item Des				OD (in)		Wt (lb/ft)		Grade		Jts		Len (ft)	
Tubing				2 1/16		3.25		J-55		234		7,553.57	
Notch Seat Nipple				2 1/16		3.25		N-80		1		1.20	
Perforation Data													
Zone			Bnch/St g		Entered Shot Total		Top (ftKB)		Btm (ftKB)		Date		
NIOBRARA, ORIGINAL HOLE			A		64		7,266.0		7,282.0		12/21/2011		
NIOBRARA, ORIGINAL HOLE					8		7,278.0		7,472.0		10/19/1994		
NIOBRARA, ORIGINAL HOLE			B		64		7,394.0		7,410.0		12/21/2011		
CODELL, ORIGINAL HOLE					40		7,592.0		7,602.0		6/7/1999		
CODELL, ORIGINAL HOLE					9		7,594.0		7,603.0		10/19/1994		
Stimulations & Treatments													
Bnch/Stg		Date		Zone				Primary Job Type					
		10/21/1994		NIOBRARA-CODELL, ORIGINAL HOLE				DRILLING/COMPLETION - ORIGINAL					
Comment LIMITED ENTRY FRAC													
Total Add Amount Proppant 416000 lb				Total Clean Volume...				Vol Slurry Tot (gal) 105504.00				Vol Gas Tot (MCF)	
Avg Treat Pressure (psi)			Max Treat Pressure (psi)			Avg Treat Rate (bbl/min)			Max Treat Rate (bbl/min)				



**Well Name: DOS RIOS 34-07H6**

DEVIATED - ORIGINAL HOLE, 6/21/2012 11:58:11 AM



## Stimulations & Treatments

Bnch/Stg	Date	Zone	Primary Job Type	
	6/9/1999	CODELL, ORIGINAL HOLE	RE-FRAC	
Comment				
Total Add Amount		Total Clean Volume...	Vol Slurry Tot (gal)	Vol Gas Tot (MCF)
Proppant Ottawa 245800 lb			134988.00	
Avg Treat Pressure (psi)	Max Treat Pressure (psi)	Avg Treat Rate (bbl/min)	Max Treat Rate (bbl/min)	
6,767.0	7,219.0	14.00	14.40	
Bnch/Stg	Date	Zone	Primary Job Type	
	10/6/2006	CODELL, ORIGINAL HOLE	TRI-FRAC	
Comment				
10/5/06 ABORTED FRAC, PKR FAILED REFRACED 10/6/06				
Total Add Amount		Total Clean Volume...	Vol Slurry Tot (gal)	Vol Gas Tot (MCF)
Proppant Ottawa 245600 lb			128940.00	
Avg Treat Pressure (psi)	Max Treat Pressure (psi)	Avg Treat Rate (bbl/min)	Max Treat Rate (bbl/min)	
7,475.0	7,815.0	14.40	14.70	
Bnch/Stg	Date	Zone	Primary Job Type	
	1/5/2012	NIOBRARA, ORIGINAL HOLE	RE-FRAC	
Comment				
( NIOBRARA ) SHUT DOWN FOR 2 HOURS AT STARTUP TO REPLACE BLENDER DUE TO OIL LEAK .CHEM TRUCK RAN OUT OF FUEL AND WE WENT TO FLUSH WITH 150 BBLS LEFT IN STAGE 6 .FLUSHED TO PERFS AND SHUT DOWN FOR 5 MIN TO RESTART CHEM TRUCK .PUMPED 50 BBLS GELLED FLUID THEN STARTED BACK ON 2 PPG SAND . RESUMED NORMAL SCHEDULE . FINAL ISIP =3750 , FINAL 5 MIN = 3338 , FINAL F.G. = 0.945				
Total Add Amount		Total Clean Volume...	Vol Slurry Tot (gal)	Vol Gas Tot (MCF)
Proppant Ottawa 241331 lb		149100.00	159642.00	
Avg Treat Pressure (psi)	Max Treat Pressure (psi)	Avg Treat Rate (bbl/min)	Max Treat Rate (bbl/min)	
6,997.0	7,605.0	15.30	18.20	

## Other In Hole

Run Date	Des	OD (in)	Top (ftKB)	Btm (ftKB)

## Logs

Date	Type	Top (ftKB)	Btm (ftKB)
10/15/1994	INDUCTION	429.0	7,772.0
10/19/1994	CEMENT BOND	4,500.0	7,609.0