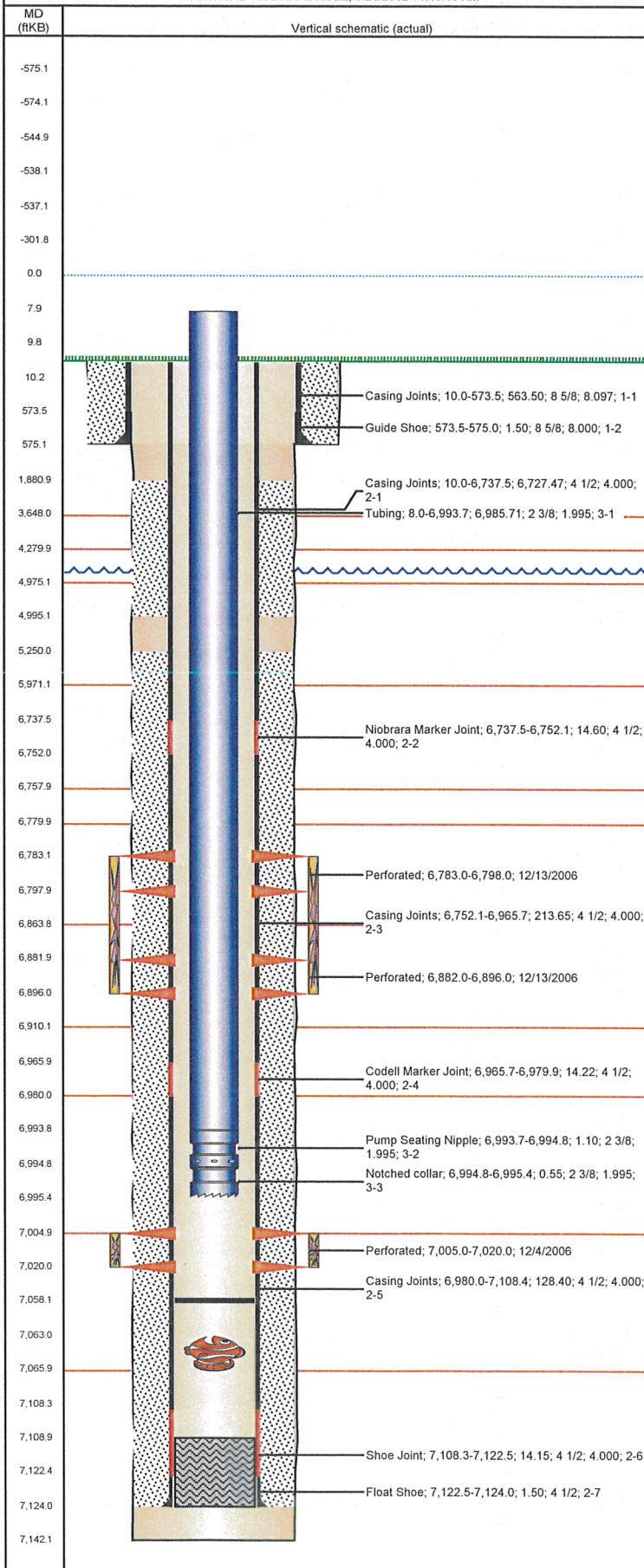


Well Name: GEHRING C08-10X

VERTICAL - ORIGINAL HOLE, 6/21/2012 11:49:19 AM



## Well Header

API	Business Unit	District	Well Config
05-123-27307	WATTENBERG	15	VERTICAL
Original KB Elevation (ft)	KB - GL / MSL (ftKB)	Spud Date	P & A Date
4,766.00	10.00	11/12/2006	

Comment  
PUSH FP TO 7063' C/O CFTP AFTER FRAC HAS BEEN COMPLETED.(RIH HOLE W/ CONE BIT / BURN SHOE) C/O DN TO PBD 7101'

Directions To Well  
WCR 46 & WCR 53, N .4, W .4, S INTO

Current PBD (ftKB)  
ORIGINAL HOLE - 7,058.0

## Surface Location (Congressional)

Quarter 1	Quarter 2	Quarter 3	Quarter 4	Section	Township	Twnshp N...	Range	Rng E/W Dir
		NW	SE	8	4	N	64	W

## Bottom Hole Location

North-South Distance (ft)	From N or S Line	East-West Distance (ft)	From E or W Line

## Plug Back Total Depths

Date	Depth (ftKB)	Method	Com
4/18/2006	7,063.0	TAG	PLUG REMNANTS
11/16/2006	7,109.0	TAG	FLOAT SHOE

## Wellbore Sections

Section Des	Size (in)	Act Top (ftKB)	Act Btm (ftKB)
SURFACE	12 1/4	10.0	575.0
PRODUCTION	7 7/8	575.0	7,142.0

## Zone Statuses

Zone Name	Status Date	Status	Job
CODELL	12/14/2006	PR	DRILLING/COMPLETION - ORIGINAL, 11/11/2006 00:00
CODELL	1/17/2012	PR	RE-FRAC, 1/4/2012 03:00
NIOBRARA	12/14/2006	PR	DRILLING/COMPLETION - ORIGINAL, 11/11/2006 00:00

## Casing Strings

Csg Des	Run Date	OD (in)	Wt/Len (lb/ft)	Grade	Top (ftKB)	Set Depth (ftKB)
Surface	11/12/2006	8 5/8	24.00	J-55	10.0	575.0
Production	11/16/2006	4 1/2	11.60	M-80	10.0	7,124.0

## Cement

Des	Top (ftKB)	Btm (ftKB)
SURFACE CASING CEMENT	10.0	575.0
PRODUCTION CASING CEMENT	1,881.0	4,995.0
PRODUCTION CASING CEMENT	5,250.0	7,124.0

## Tubing Components

Item Des	OD (in)	Wt (lb/ft)	Grade	Jts	Len (ft)
Tubing	2 3/8	4.70	J-55	226	6,985.71
Pump Seating Nipple	2 3/8	4.70	J-55	1	1.10
Notched collar	2 3/8	4.70	J-55	1	0.55

## Perforation Data

Zone	Bnch/St g	Entered Shot Total	Top (ftKB)	Btm (ftKB)	Date
NIOBRARA, ORIGINAL HOLE		90	6,783.0	6,798.0	12/13/2006
NIOBRARA, ORIGINAL HOLE		84	6,882.0	6,896.0	12/13/2006
CODELL, ORIGINAL HOLE		60	7,005.0	7,020.0	12/4/2006

## Stimulations & Treatments

Bnch/Stg	Date	Zone	Primary Job Type
	12/13/2006	CODELL, ORIGINAL HOLE	DRILLING/COMPLETION - ORIGINAL

Total Add Amount		Total Clean Volume...	Vol Slurry Tot (gal)	Vol Gas Tot (MCF)
Proppant Ottawa 271580 lb			129150.01	
Avg Treat Pressure (psi)	Max Treat Pressure (psi)	Avg Treat Rate (bbl/min)	Max Treat Rate (bbl/min)	
3,615.0	4,109.0	18.50	19.10	

Bnch/Stg	Date	Zone	Primary Job Type
	12/13/2006	NIOBRARA, ORIGINAL HOLE	DRILLING/COMPLETION - ORIGINAL

Total Add Amount		Total Clean Volume...	Vol Slurry Tot (gal)	Vol Gas Tot (MCF)
Proppant Ottawa 238100 lb;			170142.00	
Proppant SB Excel 12000 lb				
Avg Treat Pressure (psi)	Max Treat Pressure (psi)	Avg Treat Rate (bbl/min)	Max Treat Rate (bbl/min)	
4,730.0	4,995.0	46.50	47.60	



**Well Name: GEHRING C08-10X**

VERTICAL - ORIGINAL HOLE, 6/21/2012 11:49:19 AM

## Stimulations & Treatments

Bnch/Stg	Date	Zone	Primary Job Type
	1/4/2012	CODELL, ORIGINAL HOLE	RE-FRAC
<b>Comment</b> 54 BBLS TO LOAD CASING. OPEN WELLHEAD @ 60 PSI. PUMP 49 BBLS DOWN TUBING PACKER LOOKS GOOD, SHUT DOWN AND GEL UP. ISIP 2354, 5 MIN 1566. PH PROBE NOT READING CORRECTLY, PRESSURE GUAGE ON ANNULUS PUMP NOT WORKING. HAD TO SWITCH GEL TANKS DUE TO VISC DROPPING OFF. HAD ISSUES LINING OUT THE BF-9L. NO ISSUES WITH ANNULUS. PRESSURE MAINTAINED THROUGHT OUT JO AROUND 150-250 PSI. ISIP 4107, 5 MIN 4035, MAX PSI 5121, RATE 15.3, AVERAGE PSI 4922, RATE 14.8, PH 10.23, TEMP 65.5.			
Total Add Amount		Total Clean Volume...	Vol Slurry Tot (gal)
Proppant Ottawa 240403 lb		129330.60	140208.60
Avg Treat Pressure (psi)	Max Treat Pressure (psi)	Avg Treat Rate (bbl/min)	Max Treat Rate (bbl/min)
4,922.0	5,121.0	14.80	15.30

## Other In Hole

Run Date	Des	OD (in)	Top (ftKB)	Btm (ftKB)
4/18/2007	DRILLED UP CIPF	2.99	7,063.0	7,066.0

## Logs

Date	Type	Top (ftKB)	Btm (ftKB)
11/15/2006	COMPENSATED DENSITY	2,790.0	7,122.0
11/15/2006	INDUCTION	585.0	7,142.0
11/29/2006	CBL/CCL/GR	1,726.0	7,099.0
8/25/2011	GYRO	10.0	6,900.0

