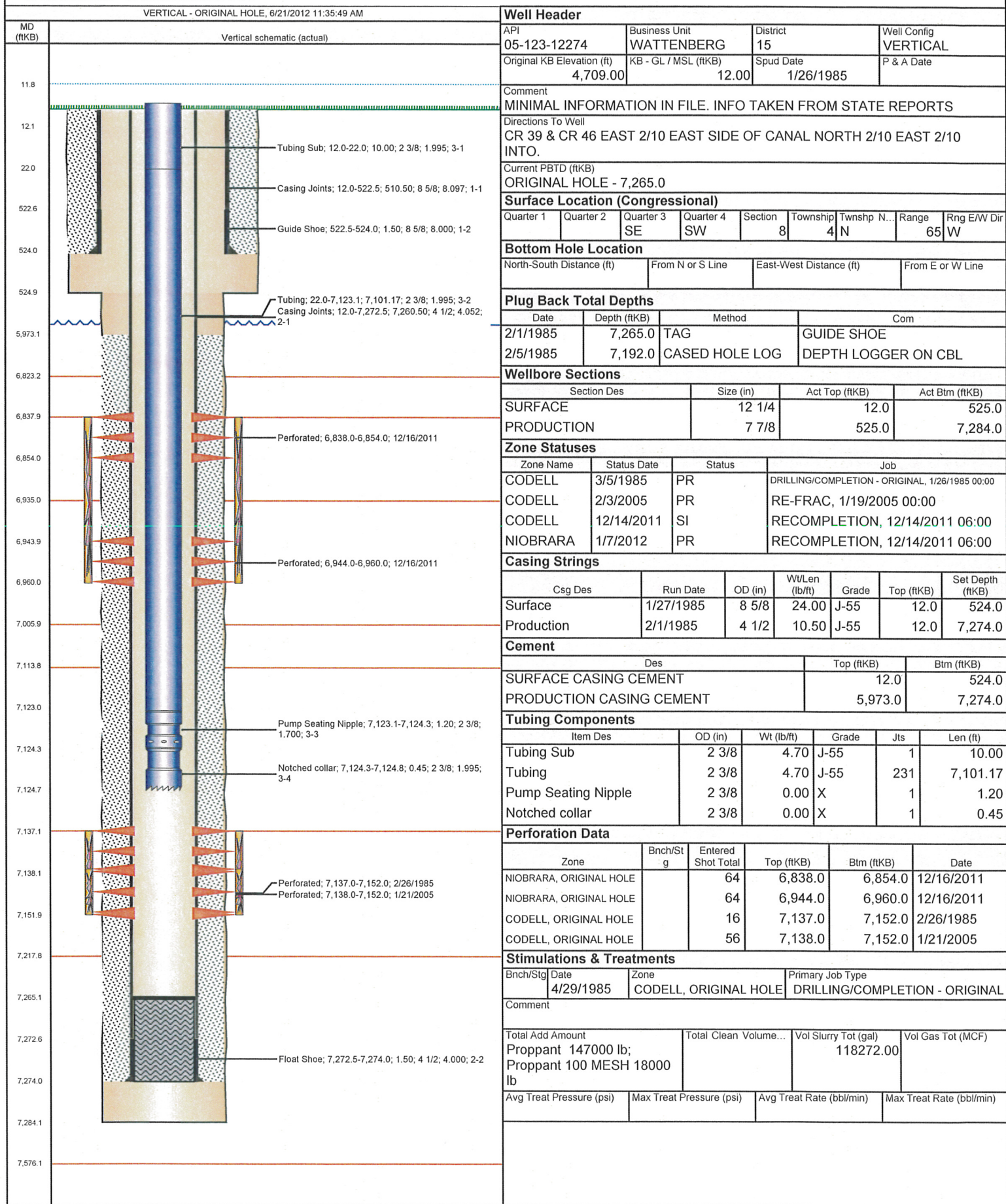
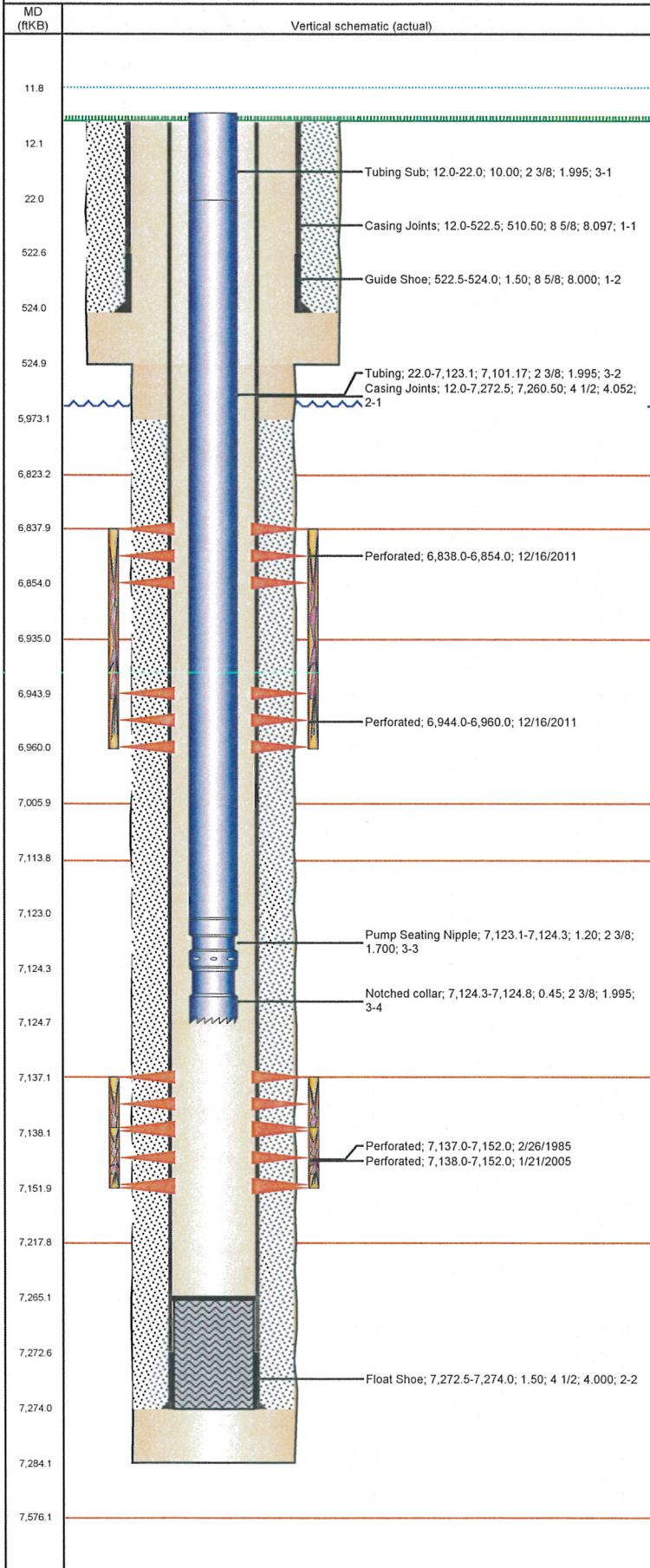


Well Name: BOHLENDER 04



Well Name: BOHLENDER 04

VERTICAL - ORIGINAL HOLE, 6/21/2012 11:35:49 AM



Stimulations & Treatments

Bnch/Stg	Date	Zone	Primary Job Type	
	1/28/2005	CODELL, ORIGINAL HOLE	RE-FRAC	
Comment				
Total Add Amount		Total Clean Volume...	Vol Slurry Tot (gal)	Vol Gas Tot (MCF)
Proppant Ottawa 245800 lb			131754.01	
Avg Treat Pressure (psi)		Max Treat Pressure (psi)	Avg Treat Rate (bbl/min)	Max Treat Rate (bbl/min)
4,859.0		5,254.0	17.90	18.20
Bnch/Stg	Date	Zone	Primary Job Type	
A&B	1/4/2012	NIOBRARA, ORIGINAL HOLE	RECOMPLETION	
Comment				
(NIOBRARA A&B RC) SD FOR 5 MIN TO LET ACID SOAK ON PERFS. ISIP 3388. PUMP KICKED DUE TO BUFFER ISSUE, NOT BEING PUMPED, OUT DURING 3.0 PSA STAGE. PUMP KICKED DUE TO BUFFER ISSUE AGAIN, OUT DURING 4.0 PSA STAGE. JOB WENT WELL. AVERAGES: VISC 18.3, TEMP 69.6, PH 10.4, NOLTE +0.20. POST ISIP 3840. POST 5 MIN 3480.				
Total Add Amount		Total Clean Volume...	Vol Slurry Tot (gal)	Vol Gas Tot (MCF)
Proppant Ottawa 249316.505 lb		153179.46	164489.22	
Avg Treat Pressure (psi)		Max Treat Pressure (psi)	Avg Treat Rate (bbl/min)	Max Treat Rate (bbl/min)
6,867.0		7,602.0	25.60	26.80

Other In Hole

Run Date	Des	OD (in)	Top (ftKB)	Btm (ftKB)

Logs

Date	Type	Top (ftKB)	Btm (ftKB)
2/1/1985	COMPENSATED DENSITY	4,300.0	7,282.0
2/1/1985	INDUCTION	524.0	7,283.0
2/5/1985	CEMENT BOND	5,818.0	7,189.0