

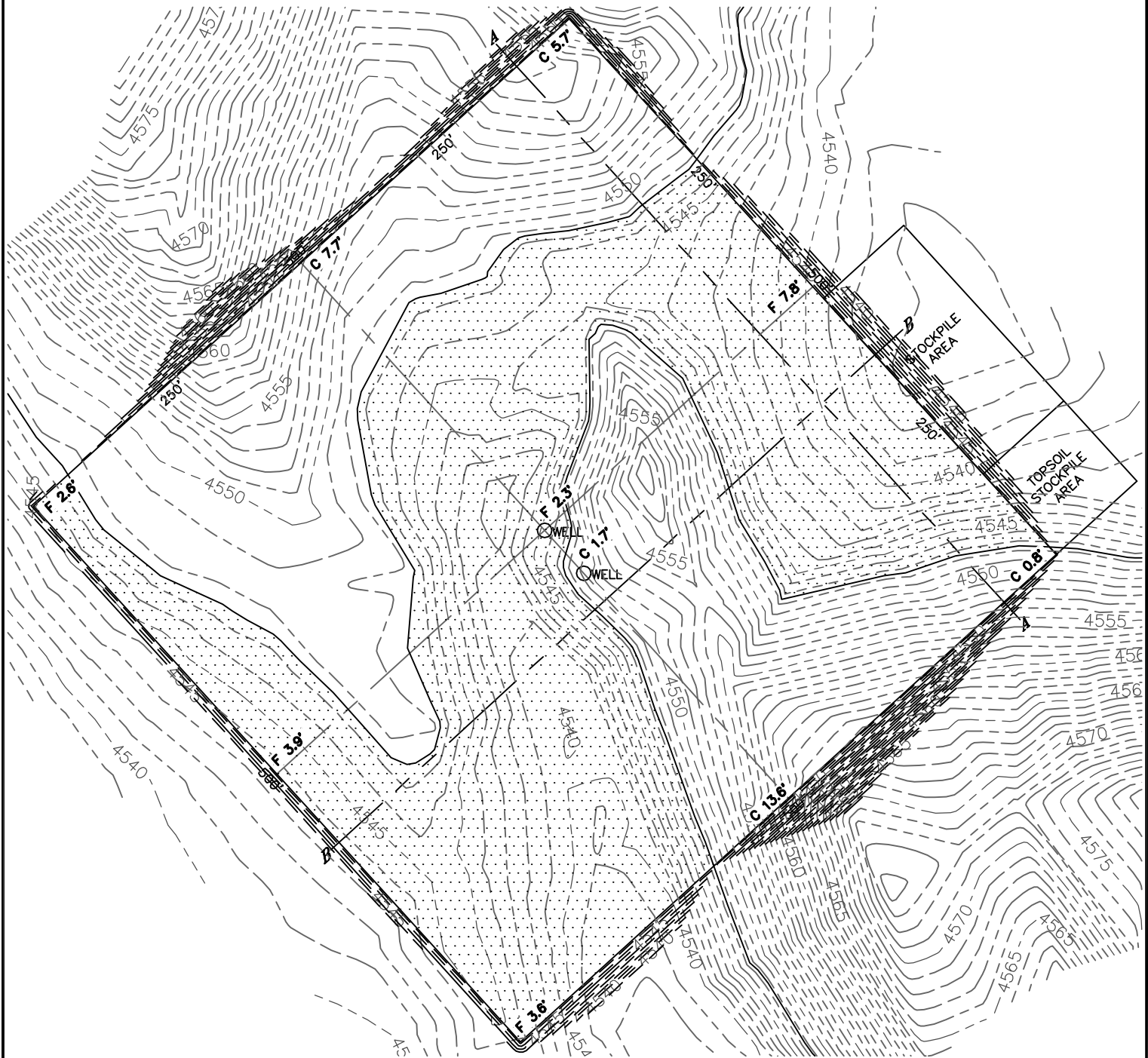


Lat40°, Inc. 1635 Foxtrail Drive, Suite 325 Loveland, CO 970-776-3321

CUT & FILL DIAGRAM

LATHAM 41-1 PAD

SECTION: 1
TOWNSHIP: 4N
RANGE: 63W



OPERATOR: BONANZA CREEK ENERGY, INC.

LOCATION: 661' FNL, 545' FEL

EXISTING ELEV= 4545.0'

PROPOSED ELEV= 4547.6'

DISTURBANCE= 6.3 ACRES

ESTIMATED EARTHWORK:

TOPSOIL= 9,259 CY

CUT= 20,670 CY

FILL= 20,660 CY

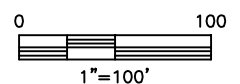
EXCESS= 10 CY

NOTE:

- 1) Ground elevations are based on an observed GPS elevation (NAVD 1988 DATUM).
- 2) No allowance has been made for soil expansion or compaction
- 3) Proposed elevation does not account for top soil removal.
- 4) Top soil volume assumes 12" depth across entire location.
- 5) Fill slopes 2:1
- 6) Cut slopes 1.5:1

LEGEND

EX. CONTOUR	---
PRO. CONTOUR	---
FILL AREA	



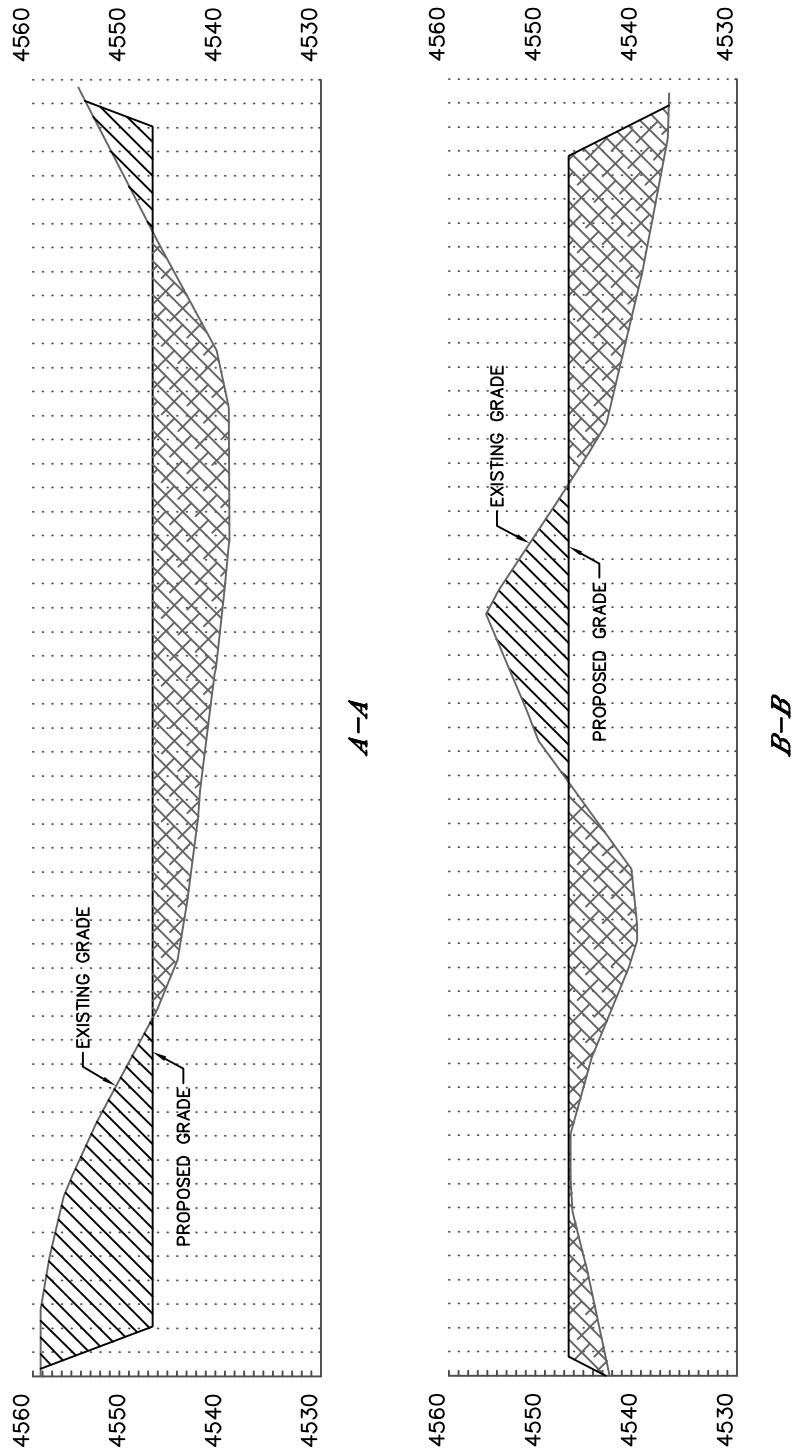
DATE: 6/6/2012
PROJECT#: 2011338



CROSS SECTION DIAGRAM

LATHAM 41-1 PAD

SECTION: 1
TOWNSHIP: 4N
RANGE: 63W



HORIZONTAL SCALE: 1"=80', VERTICAL SCALE: 1"=20'