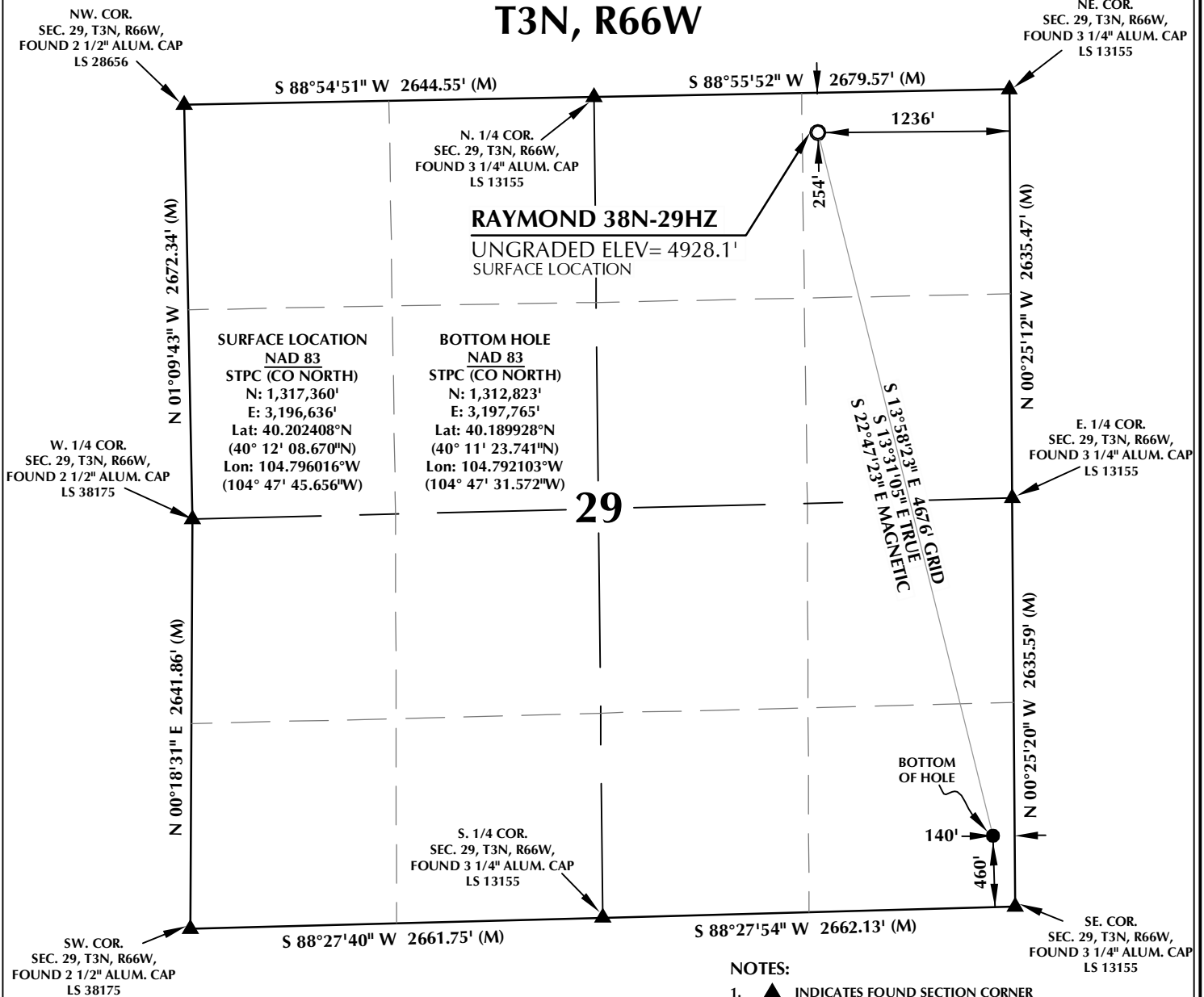


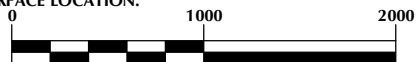
# T3N, R66W



29

## NOTES:

- ▲ INDICATES FOUND SECTION CORNER
- INDICATES CALCULATED CORNER
- ELEVATION BASED ON NAVD88 (GEOID09)
- BASIS OF BEARING DERIVED FROM COLORADO COORDINATE SYSTEM 1983 NORTH ZONE UNLESS OTHERWISE NOTED.
- ALL MEASURED DISTANCES ARE GRID. COMBINED SCALE FACTOR: .99972326
- OPERATOR: ROB WILSON / PDOP = 1.3
- SURFACE USE OF LOCATION IS RANGELAND.
- SEE ADDENDUM TO WELL LOCATION CERTIFICATE FOR EXISTING IMPROVEMENTS WITHIN 400' OF THE WELL PAD.
- WELL FOOTAGES ARE MEASURED AT RIGHT ANGLES TO THE SECTION LINES.
- THE BOTTOM OF HOLE BEARS S13°58'23"E 4676' FROM THE SURFACE LOCATION.



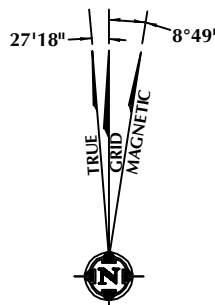
SCALE: 1" = 1000'

## CERTIFICATE OF SURVEYOR:

THIS IS TO CERTIFY THAT THE ABOVE PLAT WAS PREPARED FROM FIELD NOTES OF ACTUAL SURVEY MADE BY ME OR UNDER MY SUPERVISION AND THAT THE SAME ARE TRUE AND CORRECT TO THE BEST OF MY KNOWLEDGE AND BELIEF. THIS CERTIFICATE DOES NOT REPRESENT A LAND SURVEY PLAT OR IMPROVEMENT SURVEY PLAT AS DEFINED BY C.S. 38-51-102 AND CANNOT BE RELIED UPON TO DETERMINE OWNERSHIP.

*Benjamin J. Reenders*  
 BENJAMIN J. REENDERS  
 PROFESSIONAL LAND SURVEYOR  
 COLORADO REGISTRATION NUMBER 48365  
 2/22/12

NOTICE: ACCORDING TO COLORADO STATE LAW YOU MUST COMMENCE ANY LEGAL ACTION BASED UPON ANY DEFECT IN THIS SURVEY WITHIN THREE YEARS AFTER YOU FIRST DISCOVER SUCH DEFECT. IN NO EVENT MAY ANY ACTION BASED UPON ANY DEFECT IN THIS SURVEY BE COMMENCED MORE THAN TEN YEARS FROM THE DATE ON THE CERTIFICATION SHOWN HEREON.



NOTE: MAGNETIC NORTH IS CURRENT AS OF 2/22/2012. MAGNETIC NORTH CHANGES WEST 0°08' PER YEAR.

## WELL PAD - RAYMOND 4 PAD NENE

RAYMOND 38N-29HZ  
 WELL LOCATION CERTIFICATE  
 254' FNL & 1236' FEL NENE (SURFACE)  
 460' FSL & 140' FEL SESE (BOTTOM)  
 LOCATED IN SECTION 29  
 T3N, R66W, 6TH P.M.  
 WELD COUNTY, COLORADO

Kerr-McGee Oil &  
 Gas Onshore L.P.  
 1099 18th Street  
 Denver, Colorado 80202



## CONSULTING, LLC

2155 North Main Street  
 Sheridan, Wyoming 82801  
 Phone 307-674-0609  
 Fax 307-674-0182

DRAFTED BY: APF	CHECKED BY: BJR
DATE DRAFTED: 9/2/11	DATE SURVEYED: 2/21/12
REVISED: 2/22/12	FILE NAME: 11-58