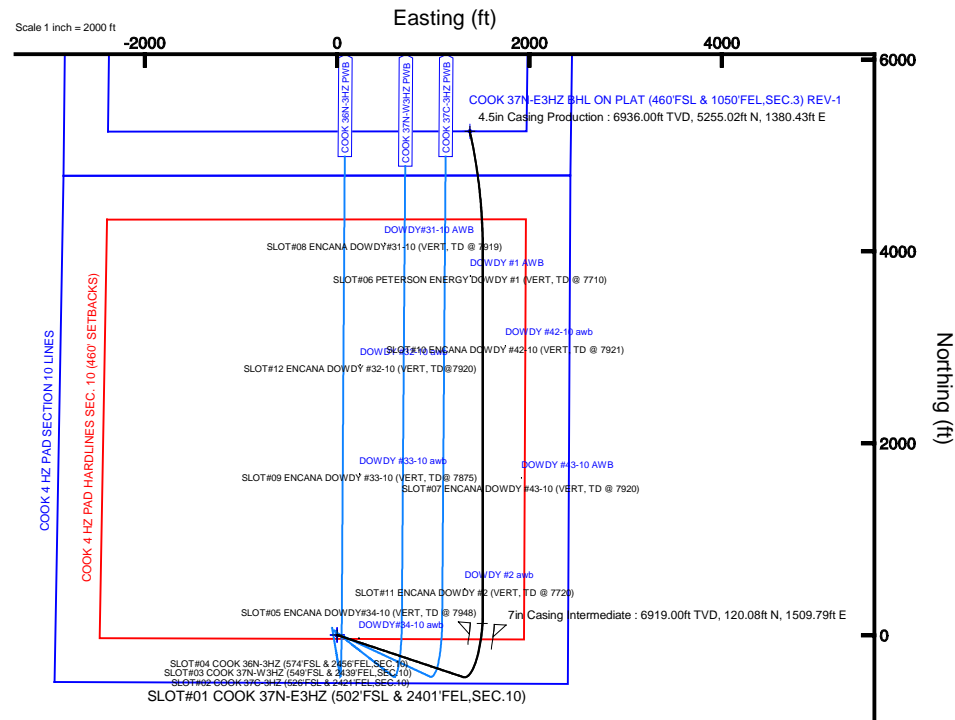
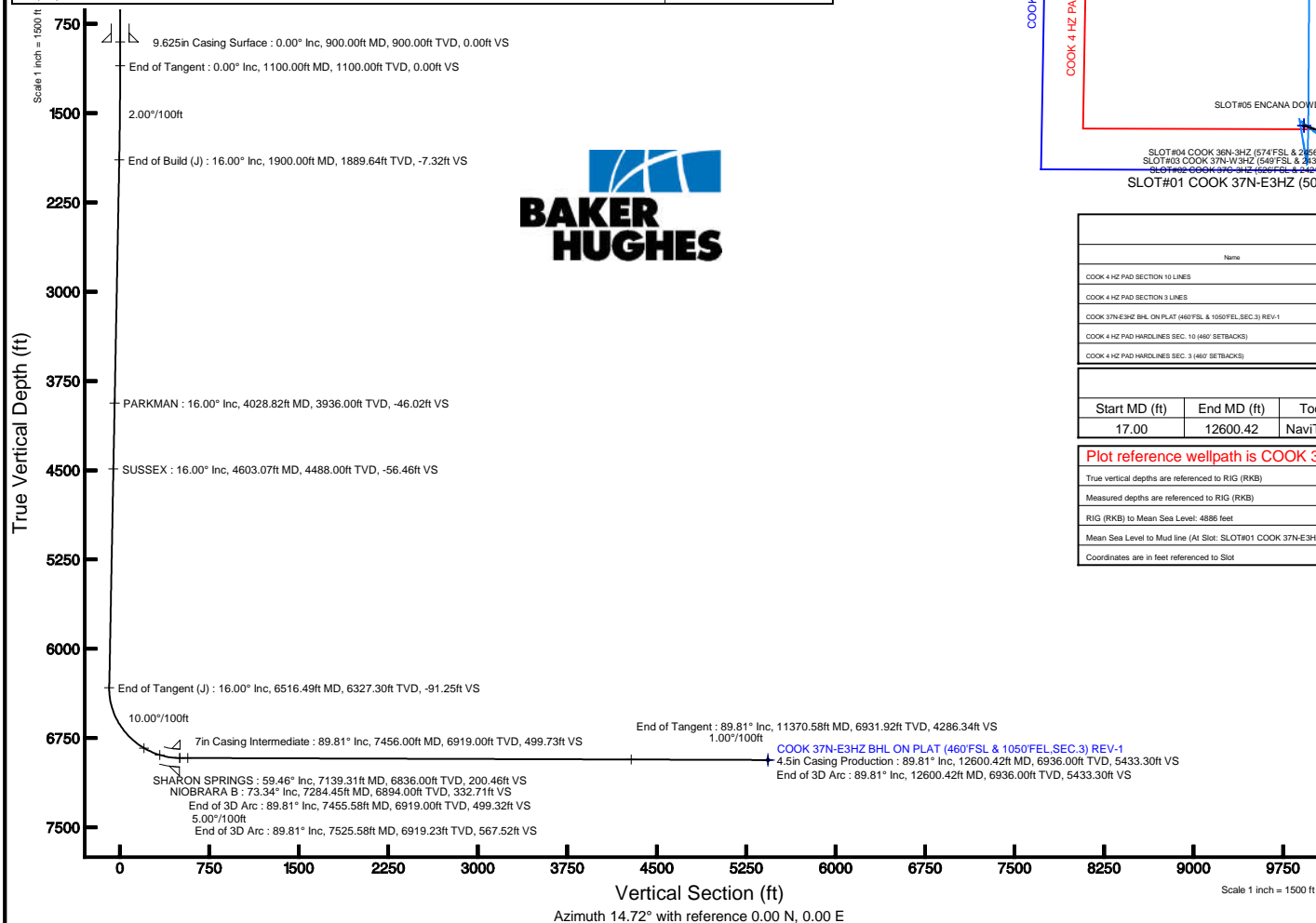


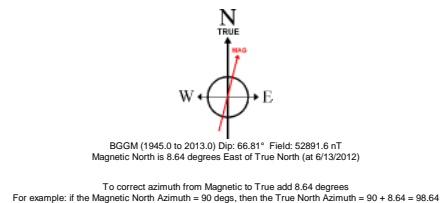
Location:	COLORADO	Slot:	SLOT#01 COOK 37N-E3HZ (502'FSL & 2401'FEL, SEC.10)
Field:	WELD COUNTY (KERR MCGEE)	Well:	COOK 37N-E3HZ
Facility:	SEC.10-T2N-R65W	Wellbore:	COOK 37N-E3HZ PWB

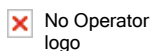
Well Profile Data								
Design Comment	MD (ft)	Inc (°)	Az (°)	TVD (ft)	Local N (ft)	Local E (ft)	DLS (°/100ft)	VS (ft)
Tie On	17.00	0.000	108.500	17.00	0.00	0.00	0.00	0.00
End of Tangent	1100.00	0.000	108.500	1100.00	0.00	0.00	0.00	0.00
End of Build (J)	1900.00	16.000	108.500	1889.64	-35.21	105.24	2.00	-7.32
End of Tangent (J)	6516.49	16.000	108.500	6327.30	-438.98	1311.96	0.00	-91.25
End of 3D Arc	7455.58	89.811	3.500	6919.00	119.67	1509.76	10.00	499.32
End of 3D Arc	7525.58	89.811	0.000	6919.23	189.62	1511.90	5.00	567.52
End of Tangent	11370.58	89.811	0.000	6931.92	4034.60	1511.90	0.00	4286.34
End of 3D Arc	12600.42	89.810	347.703	6936.00	5255.02	1380.43	1.00	5433.30

Location Information							
Facility Name			Grid East (US ft)	Grid North (US ft)	Latitude	Longitude	
SEC.10-T2N-R65W			3237856.502	1297686.335	40°08'50.402"N	104°38'56.857"W	
Slot		Local N (ft)	Local E (ft)	Grid East (US ft)	Grid North (US ft)	Latitude	Longitude
SLOT#01 COOK 37N-E3HZ (502FSL & 2401 FSL SEC.10)		0.00		3237856.502	1297686.335	40°08'50.402"N	104°38'56.857"W
RIG (RKB) to Mud line (At Slot: SLOT#01 COOK 37N-E3HZ (502FSL & 2401 FSL SEC.10))						4866ft	
Mean Sea Level to Mud line (At Slot: SLOT#01 COOK 37N-E3HZ (502FSL & 2401 FSL SEC.10))						0ft	
RIG (RKB) to Mean Sea Level						4866ft	



Targets								
Name	MD (ft)	TVD (ft)	Local N (ft)	Local E (ft)	Grid East (US ft)	Grid North (US ft)	Latitude	Longitude
COOK 4 HZ PAD SECTION 15 LINES		0.00	0.04	-0.02	3237656.49	1237668.38	40°08'50.402"N	104°38'56.853"W
COOK 4 HZ PAD SECTION 3 LINES		0.00	0.04	-0.02	3237656.49	1237668.38	40°08'50.402"N	104°38'56.853"W
COOK 37N-E3HZ INH. ON PLAT (460FSL & 1050FEL-SEC.13) REV.1	12600.42	6936.00	5265.02	1380.43	3239196.38	1302926.13	40°09'42.332"N	104°38'59.077"W
COOK 4 HZ PAD HAD LINES SEC. 10 (460 SETBACKS)		7100.00	0.04	-0.02	3237656.49	1237668.38	40°08'50.402"N	104°38'56.853"W
COOK 4 HZ PAD HAD LINES SEC. 3 (460 SETBACKS)		7100.00	0.04	-0.02	3237656.49	1237668.38	40°08'50.402"N	104°38'56.853"W





Planned Wellpath Report

COOK 37N-E3HZ (REVISED PERMIT-3) PWP

Page 1 of 6



REFERENCE WELLPATH IDENTIFICATION

Operator	KERR-MCGEE OIL & GAS ONSHORE LP	Slot	SLOT#01 COOK 37N-E3HZ (502'FSL & 2401'FEL,SEC.10)
Area	COLORADO	Well	COOK 37N-E3HZ
Field	WELD COUNTY (KERR MCGEE)	Wellbore	COOK 37N-E3HZ PWB
Facility	SEC.10-T2N-R65W		

REPORT SETUP INFORMATION

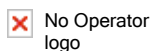
Projection System	NAD83 / Lambert Colorado SP, Northern Zone (501), US feet	Software System	WellArchitect® 4.0.0
North Reference	True	User	Cookdanm
Scale	0.999958	Report Generated	6/14/2012 at 2:41:52 PM
Convergence at slot	0.55° East	Database/Source file	WA_ANADARKO/COOK_37N-E3HZ_PWB.xml

WELLPATH LOCATION

	Local coordinates		Grid coordinates		Geographic coordinates	
	North[ft]	East[ft]	Easting[US ft]	Northing[US ft]	Latitude	Longitude
Slot Location	0.00	0.00	3237856.50	1297658.34	40°08'50.402"N	104°38'56.857"W
Facility Reference Pt			3237856.50	1297658.34	40°08'50.402"N	104°38'56.857"W
Field Reference Pt			3197771.84	1268891.29	40°04'09.600"N	104°47'36.000"W

WELLPATH DATUM

Calculation method	Minimum curvature	RIG (RKB) to Facility Vertical Datum	4886.00ft
Horizontal Reference Pt	Slot	RIG (RKB) to Mean Sea Level	4886.00ft
Vertical Reference Pt	RIG (RKB)	RIG (RKB) to Mud Line at Slot (SLOT#01 COOK 37N-E3HZ (502'FSL & 2401'FEL,SEC.10))	4886.00ft
MD Reference Pt	RIG (RKB)	Section Origin	N 0.00, E 0.00 ft
Field Vertical Reference	Mean Sea Level	Section Azimuth	14.72°

No Operator
logo

Planned Wellpath Report

COOK 37N-E3HZ (REVISED PERMIT-3) PWP

Page 2 of 6

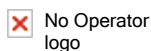


REFERENCE WELLPATH IDENTIFICATION

Operator	KERR-MCGEE OIL & GAS ONSHORE LP	Slot	SLOT#01 COOK 37N-E3HZ (502'FSL & 2401'FEL,SEC.10)
Area	COLORADO	Well	COOK 37N-E3HZ
Field	WELD COUNTY (KERR MCGEE)	Wellbore	COOK 37N-E3HZ PWB
Facility	SEC.10-T2N-R65W		

WELLPATH DATA (138 stations) † = interpolated/extrapolated station

MD [ft]	Inclination [°]	Azimuth [°]	TVD [ft]	Vert Sect [ft]	North [ft]	East [ft]	DLS [°/100ft]	Comments
0.00†	0.000	108.500	0.00	0.00	0.00	0.00	0.00	
17.00	0.000	108.500	17.00	0.00	0.00	0.00	0.00	
117.00†	0.000	108.500	117.00	0.00	0.00	0.00	0.00	
217.00†	0.000	108.500	217.00	0.00	0.00	0.00	0.00	
317.00†	0.000	108.500	317.00	0.00	0.00	0.00	0.00	
417.00†	0.000	108.500	417.00	0.00	0.00	0.00	0.00	
517.00†	0.000	108.500	517.00	0.00	0.00	0.00	0.00	
617.00†	0.000	108.500	617.00	0.00	0.00	0.00	0.00	
717.00†	0.000	108.500	717.00	0.00	0.00	0.00	0.00	
817.00†	0.000	108.500	817.00	0.00	0.00	0.00	0.00	
917.00†	0.000	108.500	917.00	0.00	0.00	0.00	0.00	
1017.00†	0.000	108.500	1017.00	0.00	0.00	0.00	0.00	
1100.00	0.000	108.500	1100.00	0.00	0.00	0.00	0.00	
1117.00†	0.340	108.500	1117.00	0.00	-0.02	0.05	2.00	
1217.00†	2.340	108.500	1216.97	-0.16	-0.76	2.27	2.00	
1317.00†	4.340	108.500	1316.79	-0.54	-2.61	7.79	2.00	
1417.00†	6.340	108.500	1416.35	-1.16	-5.56	16.62	2.00	
1517.00†	8.340	108.500	1515.53	-2.00	-9.61	28.73	2.00	
1617.00†	10.340	108.500	1614.20	-3.07	-14.76	44.12	2.00	
1717.00†	12.340	108.500	1712.24	-4.37	-21.00	62.77	2.00	
1817.00†	14.340	108.500	1809.54	-5.89	-28.32	84.65	2.00	
1900.00	16.000	108.500	1889.64	-7.32	-35.21	105.24	2.00	
1917.00†	16.000	108.500	1905.98	-7.63	-36.70	109.69	0.00	
2017.00†	16.000	108.500	2002.11	-9.45	-45.45	135.83	0.00	
2117.00†	16.000	108.500	2098.24	-11.26	-54.19	161.96	0.00	
2217.00†	16.000	108.500	2194.36	-13.08	-62.94	188.10	0.00	
2317.00†	16.000	108.500	2290.49	-14.90	-71.68	214.24	0.00	
2417.00†	16.000	108.500	2386.62	-16.72	-80.43	240.38	0.00	
2517.00†	16.000	108.500	2482.74	-18.54	-89.18	266.52	0.00	
2617.00†	16.000	108.500	2578.87	-20.35	-97.92	292.66	0.00	
2717.00†	16.000	108.500	2674.99	-22.17	-106.67	318.80	0.00	
2817.00†	16.000	108.500	2771.12	-23.99	-115.42	344.94	0.00	
2917.00†	16.000	108.500	2867.25	-25.81	-124.16	371.08	0.00	
3017.00†	16.000	108.500	2963.37	-27.63	-132.91	397.22	0.00	
3117.00†	16.000	108.500	3059.50	-29.44	-141.65	423.36	0.00	
3217.00†	16.000	108.500	3155.62	-31.26	-150.40	449.50	0.00	
3317.00†	16.000	108.500	3251.75	-33.08	-159.15	475.64	0.00	
3417.00†	16.000	108.500	3347.88	-34.90	-167.89	501.78	0.00	
3517.00†	16.000	108.500	3444.00	-36.72	-176.64	527.92	0.00	
3617.00†	16.000	108.500	3540.13	-38.53	-185.38	554.05	0.00	
3717.00†	16.000	108.500	3636.26	-40.35	-194.13	580.19	0.00	
3817.00†	16.000	108.500	3732.38	-42.17	-202.88	606.33	0.00	
3917.00†	16.000	108.500	3828.51	-43.99	-211.62	632.47	0.00	
4017.00†	16.000	108.500	3924.63	-45.81	-220.37	658.61	0.00	
4028.82†	16.000	108.500	3936.00	-46.02	-221.40	661.70	0.00	PARKMAN



Planned Wellpath Report

COOK 37N-E3HZ (REVISED PERMIT-3) PWP

Page 3 of 6

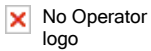


REFERENCE WELLPATH IDENTIFICATION

Operator	KERR-MCGEE OIL & GAS ONSHORE LP	Slot	SLOT#01 COOK 37N-E3HZ (502'FSL & 2401'FEL,SEC.10)
Area	COLORADO	Well	COOK 37N-E3HZ
Field	WELD COUNTY (KERR MCGEE)	Wellbore	COOK 37N-E3HZ PWB
Facility	SEC.10-T2N-R65W		

WELLPATH DATA (138 stations) † = interpolated/extrapolated station

MD [ft]	Inclination [°]	Azimuth [°]	TVD [ft]	Vert Sect [ft]	North [ft]	East [ft]	DLS [°/100ft]	Comments
4117.00†	16.000	108.500	4020.76	-47.62	-229.11	684.75	0.00	
4217.00†	16.000	108.500	4116.89	-49.44	-237.86	710.89	0.00	
4317.00†	16.000	108.500	4213.01	-51.26	-246.61	737.03	0.00	
4417.00†	16.000	108.500	4309.14	-53.08	-255.35	763.17	0.00	
4517.00†	16.000	108.500	4405.26	-54.90	-264.10	789.31	0.00	
4603.07†	16.000	108.500	4488.00	-56.46	-271.63	811.81	0.00	SUSSEX
4617.00†	16.000	108.500	4501.39	-56.71	-272.85	815.45	0.00	
4717.00†	16.000	108.500	4597.52	-58.53	-281.59	841.59	0.00	
4817.00†	16.000	108.500	4693.64	-60.35	-290.34	867.73	0.00	
4917.00†	16.000	108.500	4789.77	-62.17	-299.08	893.87	0.00	
5017.00†	16.000	108.500	4885.90	-63.99	-307.83	920.01	0.00	
5117.00†	16.000	108.500	4982.02	-65.80	-316.58	946.14	0.00	
5217.00†	16.000	108.500	5078.15	-67.62	-325.32	972.28	0.00	
5317.00†	16.000	108.500	5174.27	-69.44	-334.07	998.42	0.00	
5417.00†	16.000	108.500	5270.40	-71.26	-342.81	1024.56	0.00	
5517.00†	16.000	108.500	5366.53	-73.07	-351.56	1050.70	0.00	
5617.00†	16.000	108.500	5462.65	-74.89	-360.31	1076.84	0.00	
5717.00†	16.000	108.500	5558.78	-76.71	-369.05	1102.98	0.00	
5817.00†	16.000	108.500	5654.90	-78.53	-377.80	1129.12	0.00	
5917.00†	16.000	108.500	5751.03	-80.35	-386.54	1155.26	0.00	
6017.00†	16.000	108.500	5847.16	-82.16	-395.29	1181.40	0.00	
6117.00†	16.000	108.500	5943.28	-83.98	-404.04	1207.54	0.00	
6217.00†	16.000	108.500	6039.41	-85.80	-412.78	1233.68	0.00	
6317.00†	16.000	108.500	6135.54	-87.62	-421.53	1259.82	0.00	
6417.00†	16.000	108.500	6231.66	-89.44	-430.27	1285.96	0.00	
6516.49	16.000	108.500	6327.30	-91.25	-438.98	1311.96	0.00	
6517.00†	15.987	108.322	6327.79	-91.25	-439.02	1312.10	10.00	
6617.00†	16.554	72.129	6424.03	-84.43	-438.98	1338.80	10.00	
6717.00†	22.081	46.493	6518.53	-60.72	-421.62	1366.06	10.00	
6817.00†	29.934	32.191	6608.42	-20.84	-387.48	1393.05	10.00	
6917.00†	38.720	23.653	6690.97	34.00	-337.59	1418.96	10.00	
7017.00†	47.924	17.925	6763.67	102.12	-273.47	1442.99	10.00	
7117.00†	57.339	13.672	6824.31	181.46	-197.06	1464.41	10.00	
7139.31†	59.457	12.851	6836.00	200.46	-178.57	1468.77	10.00	SHARON SPRINGS
7217.00†	66.870	10.241	6871.05	269.62	-110.69	1482.58	10.00	
7284.45†	73.337	8.202	6894.00	332.71	-48.12	1492.72	10.00	NIOBRARA B
7317.00†	76.465	7.270	6902.48	363.90	-16.99	1496.95	10.00	
7417.00†	86.093	4.531	6917.62	461.44	81.21	1507.06	10.00	
7455.58	89.811	3.500	6919.00	499.32	119.67	1509.76	10.00	
7517.00†	89.811	0.429	6919.21	559.22	181.04	1511.87	5.00	
7525.58	89.811	0.000	6919.23	567.52	189.62	1511.90	5.00	
7617.00†	89.811	0.000	6919.54	655.94	281.04	1511.90	0.00	
7717.00†	89.811	0.000	6919.86	752.66	381.04	1511.90	0.00	
7817.00†	89.811	0.000	6920.19	849.38	481.04	1511.90	0.00	
7917.00†	89.811	0.000	6920.52	946.10	581.04	1511.90	0.00	



Planned Wellpath Report

COOK 37N-E3HZ (REVISED PERMIT-3) PWP

Page 4 of 6

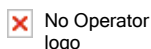


REFERENCE WELLPATH IDENTIFICATION

Operator	KERR-MCGEE OIL & GAS ONSHORE LP	Slot	SLOT#01 COOK 37N-E3HZ (502'FSL & 2401'FEL,SEC.10)
Area	COLORADO	Well	COOK 37N-E3HZ
Field	WELD COUNTY (KERR MCGEE)	Wellbore	COOK 37N-E3HZ PWB
Facility	SEC.10-T2N-R65W		

WELLPATH DATA (138 stations) † = interpolated/extrapolated station

MD [ft]	Inclination [°]	Azimuth [°]	TVD [ft]	Vert Sect [ft]	North [ft]	East [ft]	DLS [°/100ft]	Comments
8017.00†	89.811	0.000	6920.85	1042.82	681.04	1511.90	0.00	
8117.00†	89.811	0.000	6921.18	1139.53	781.04	1511.90	0.00	
8217.00†	89.811	0.000	6921.51	1236.25	881.04	1511.90	0.00	
8317.00†	89.811	0.000	6921.84	1332.97	981.04	1511.90	0.00	
8417.00†	89.811	0.000	6922.17	1429.69	1081.04	1511.90	0.00	
8517.00†	89.811	0.000	6922.50	1526.41	1181.04	1511.90	0.00	
8617.00†	89.811	0.000	6922.83	1623.13	1281.04	1511.90	0.00	
8717.00†	89.811	0.000	6923.16	1719.84	1381.04	1511.90	0.00	
8817.00†	89.811	0.000	6923.49	1816.56	1481.03	1511.90	0.00	
8917.00†	89.811	0.000	6923.82	1913.28	1581.03	1511.90	0.00	
9017.00†	89.811	0.000	6924.15	2010.00	1681.03	1511.90	0.00	
9117.00†	89.811	0.000	6924.48	2106.72	1781.03	1511.90	0.00	
9217.00†	89.811	0.000	6924.81	2203.43	1881.03	1511.90	0.00	
9317.00†	89.811	0.000	6925.14	2300.15	1981.03	1511.90	0.00	
9417.00†	89.811	0.000	6925.47	2396.87	2081.03	1511.90	0.00	
9517.00†	89.811	0.000	6925.80	2493.59	2181.03	1511.90	0.00	
9617.00†	89.811	0.000	6926.13	2590.31	2281.03	1511.90	0.00	
9717.00†	89.811	0.000	6926.46	2687.02	2381.03	1511.90	0.00	
9817.00†	89.811	0.000	6926.79	2783.74	2481.03	1511.90	0.00	
9917.00†	89.811	0.000	6927.12	2880.46	2581.03	1511.90	0.00	
10017.00†	89.811	0.000	6927.45	2977.18	2681.03	1511.90	0.00	
10117.00†	89.811	0.000	6927.78	3073.90	2781.03	1511.90	0.00	
10217.00†	89.811	0.000	6928.11	3170.62	2881.03	1511.90	0.00	
10317.00†	89.811	0.000	6928.44	3267.33	2981.03	1511.90	0.00	
10417.00†	89.811	0.000	6928.77	3364.05	3081.03	1511.90	0.00	
10517.00†	89.811	0.000	6929.10	3460.77	3181.03	1511.90	0.00	
10617.00†	89.811	0.000	6929.43	3557.49	3281.03	1511.90	0.00	
10717.00†	89.811	0.000	6929.76	3654.21	3381.02	1511.90	0.00	
10817.00†	89.811	0.000	6930.09	3750.92	3481.02	1511.90	0.00	
10917.00†	89.811	0.000	6930.42	3847.64	3581.02	1511.90	0.00	
11017.00†	89.811	0.000	6930.75	3944.36	3681.02	1511.90	0.00	
11117.00†	89.811	0.000	6931.08	4041.08	3781.02	1511.90	0.00	
11217.00†	89.811	0.000	6931.41	4137.80	3881.02	1511.90	0.00	
11317.00†	89.811	0.000	6931.74	4234.51	3981.02	1511.90	0.00	
11370.58	89.811	0.000	6931.92	4286.34	4034.60	1511.90	0.00	
11417.00†	89.811	359.536	6932.07	4331.18	4081.02	1511.71	1.00	
11517.00†	89.810	358.536	6932.40	4427.46	4181.00	1510.03	1.00	
11617.00†	89.810	357.536	6932.73	4523.25	4280.94	1506.60	1.00	
11717.00†	89.810	356.536	6933.06	4618.52	4380.81	1501.43	1.00	
11817.00†	89.810	355.536	6933.40	4713.25	4480.57	1494.52	1.00	
11917.00†	89.809	354.536	6933.73	4807.41	4580.19	1485.87	1.00	
12017.00†	89.809	353.536	6934.06	4900.96	4679.65	1475.48	1.00	
12117.00†	89.809	352.536	6934.39	4993.89	4778.91	1463.35	1.00	
12217.00†	89.809	351.536	6934.73	5086.15	4877.94	1449.50	1.00	
12317.00†	89.809	350.537	6935.06	5177.73	4976.72	1433.92	1.00	



Planned Wellpath Report

COOK 37N-E3HZ (REVISED PERMIT-3) PWP

Page 5 of 6



REFERENCE WELLPATH IDENTIFICATION

Operator	KERR-MCGEE OIL & GAS ONSHORE LP	Slot	SLOT#01 COOK 37N-E3HZ (502'FSL & 2401'FEL,SEC.10)
Area	COLORADO	Well	COOK 37N-E3HZ
Field	WELD COUNTY (KERR MCGEE)	Wellbore	COOK 37N-E3HZ PWB
Facility	SEC.10-T2N-R65W		

WELLPATH DATA (138 stations) † = interpolated/extrapolated station

MD [ft]	Inclination [°]	Azimuth [°]	TVD [ft]	Vert Sect [ft]	North [ft]	East [ft]	DLS [°/100ft]	Comments
12417.00†	89.810	349.537	6935.39	5268.59	5075.21	1416.62	1.00	
12517.00†	89.810	348.537	6935.72	5358.71	5173.38	1397.60	1.00	
12600.42	89.810	347.703	6936.00 ¹	5433.30	5255.02	1380.43	1.00	

HOLE & CASING SECTIONS - Ref Wellbore: COOK 37N-E3HZ PWB Ref Wellpath: COOK 37N-E3HZ (REVISED PERMIT-3) PWP

String/Diameter	Start MD [ft]	End MD [ft]	Interval [ft]	Start TVD [ft]	End TVD [ft]	Start N/S [ft]	Start E/W [ft]	End N/S [ft]	End E/W [ft]
13.5in Open Hole	17.00	900.00	883.00	17.00	900.00	0.00	0.00	0.00	0.00
9.625in Casing Surface	17.00	900.00	883.00	17.00	900.00	0.00	0.00	0.00	0.00
8.75in Open Hole	900.00	7456.00	6556.00	900.00	6919.00	0.00	0.00	120.08	1509.79
7in Casing Intermediate	17.00	7456.00	7439.00	17.00	6919.00	0.00	0.00	120.08	1509.79
6.125in Open Hole	7456.00	12600.42	5144.42	6919.00	6936.00	120.08	1509.79	5255.02	1380.43
4.5in Casing Production	17.00	12600.42	12583.42	17.00	6936.00	0.00	0.00	5255.02	1380.43

TARGETS

Name	MD [ft]	TVD [ft]	North [ft]	East [ft]	Grid East [US ft]	Grid North [US ft]	Latitude	Longitude	Shape
COOK 4 HZ PAD SECTION 10 LINES		0.00	0.04	-0.02	3237856.49	1297658.38	40°08'50.402"N	104°38'56.857"W	polygon
COOK 4 HZ PAD SECTION 3 LINES		0.00	0.04	-0.02	3237856.49	1297658.38	40°08'50.402"N	104°38'56.857"W	polygon
1) COOK 37N-E3HZ BHL ON PLAT (460'FSL & 1050'FEL,SEC.3) REV-1	12600.42	6936.00	5255.02	1380.43	3239186.38	1302926.13	40°09'42.332"N	104°38'39.077"W	point
COOK 4 HZ PAD HARDLINES SEC. 10 (460' SETBACKS)		7100.00	0.04	-0.02	3237856.49	1297658.38	40°08'50.402"N	104°38'56.857"W	polygon
COOK 4 HZ PAD HARDLINES SEC. 3 (460' SETBACKS)		7100.00	0.04	-0.02	3237856.49	1297658.38	40°08'50.402"N	104°38'56.857"W	polygon

SURVEY PROGRAM - Ref Wellbore: COOK 37N-E3HZ PWB Ref Wellpath: COOK 37N-E3HZ (REVISED PERMIT-3) PWP

Start MD [ft]	End MD [ft]	Positional Uncertainty Model	Log Name/Comment	Wellbore
17.00	12600.42	NaviTrak (Standard)		COOK 37N-E3HZ PWB

☒ No Operator
logo

Planned Wellpath Report

COOK 37N-E3HZ (REVISED PERMIT-3) PWP

Page 6 of 6



REFERENCE WELLPATH IDENTIFICATION

Operator	KERR-MCGEE OIL & GAS ONSHORE LP	Slot	SLOT#01 COOK 37N-E3HZ (502'FSL & 2401'FEL,SEC.10)
Area	COLORADO	Well	COOK 37N-E3HZ
Field	WELD COUNTY (KERR MCGEE)	Wellbore	COOK 37N-E3HZ PWB
Facility	SEC.10-T2N-R65W		

WELLPATH COMMENTS

MD [ft]	Inclination [°]	Azimuth [°]	TVD [ft]	Comment
4028.82	16.000	108.500	3936.00	PARKMAN
4603.07	16.000	108.500	4488.00	SUSSEX
7139.31	59.457	12.851	6836.00	SHARON SPRINGS
7284.45	73.337	8.202	6894.00	NIOBRARA B