



## Kerr-McGee Oil & Gas Onshore LP

1099 18th Street, Suite 1800  
Denver, CO 80202-1918  
P.O. Box 173779  
Denver, CO 80217-3779  
720-929-6000

March 5, 2012

Department of Natural Resources  
Oil and Gas Conservation Commission  
The Chancery Building  
1120 Lincoln St., Suite 801  
Denver, CO 80203

Re: **30 Day Certification Letter - 318A-e**  
COOK 37N-W3HZ  
Township 2 North, Range 65 West, Section 10: SW/4SE/4  
Unit Spacing: 02N-65W- Sec 3 S/2SE/4; Sec 10 E/2  
Weld County, Colorado

Ladies/Gentlemen:

Kerr-McGee Oil and Gas Onshore LP ("KMG") hereby certifies to the Director that a thirty (30) day notice has been given by certified mail to all owners in the proposed wellbore spacing unit. We have not received any objections to such well location, proposed spacing unit, or additional producing formation. KMG hereby requests the Director to approve the boundary well.

If you have any questions or issues regarding this permit, please contact Cheryl Light at (720) 929-6461.

Very truly yours,

**KERR-McGEE OIL AND GAS ONSHORE LP**

A handwritten signature in blue ink that reads 'Rebecca Heim'.

**Rebecca Heim**  
**Regulatory Analyst II**

# WELL LOCATION CERTIFICATE: COOK 37N-W3HZ

SECTION 10, TOWNSHIP 2 NORTH, RANGE 65 WEST, 6TH P.M.

## NOTES:

BH LOCATION PROVIDED BY CLIENT.  
LAND SURFACE USE-IRRIGATION CROP  
EXISTING FOOTAGES  
SEE ATTACHED MAP FOR ADDITIONAL  
IMPROVEMENTS WITHIN 400'.

PDOP=1.5

GPS OPERATOR:OWEN McKEE

## SURFACE LOCATION

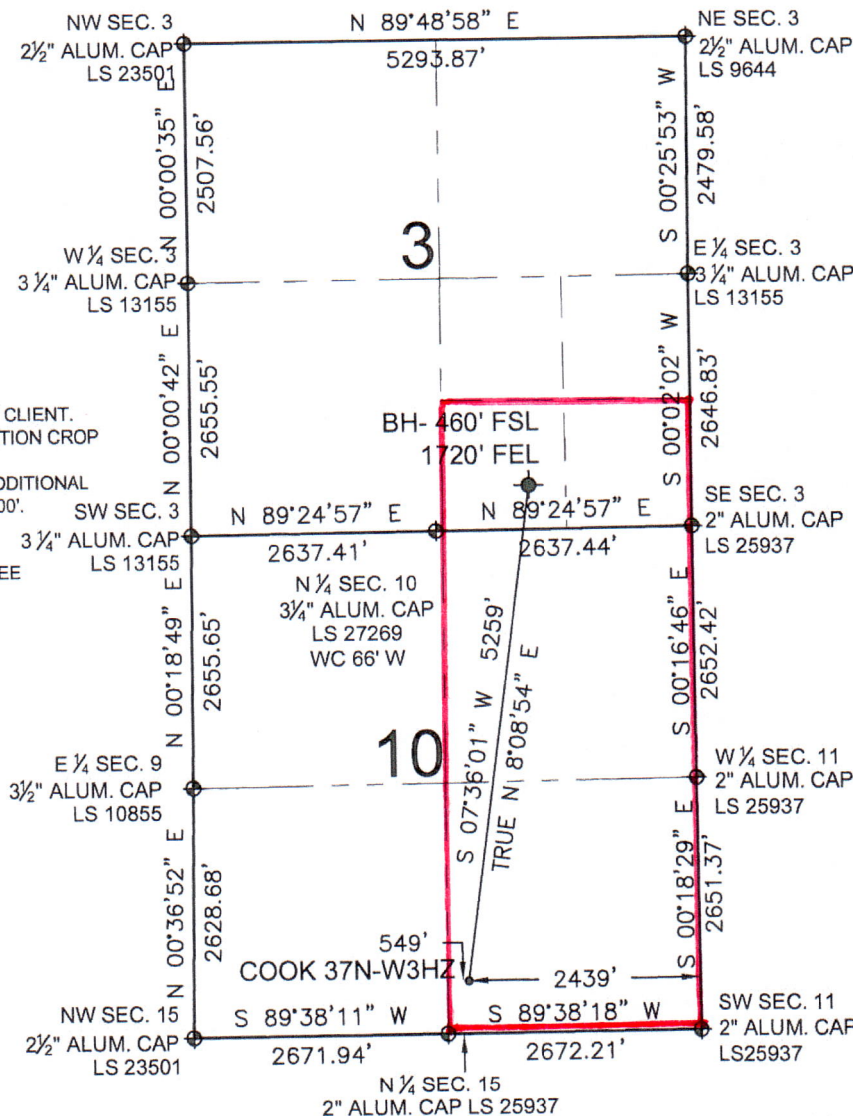
GROUND ELEVATION= 4869'  
NAD83  
LATITUDE= 40.147467°  
LONGITUDE= 104.649253°

LATITUDE= 40°08'50.882"  
LONGITUDE= 104°38'57.311"

## BOTTOM HOLE LOCATION

NAD83  
LATITUDE= 40.161758°  
LONGITUDE= 104.646586°

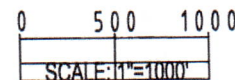
LATITUDE= 40°09'42.327"  
LONGITUDE= 104°38'47.708"



## LEGEND

- = EXISTING MONUMENT
- ◆ = BOTTOM HOLE
- BH = BOTTOM HOLE
- = PROPOSED WELL
- ◆ = EXISTING WELL

WELL COOK 37N-W3HZ TO BE LOCATED 549' FSL AND 2439' FEL

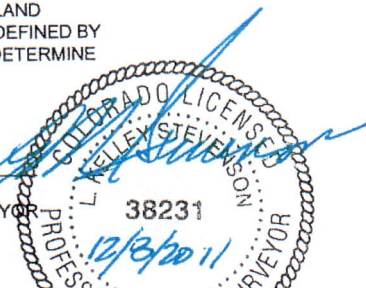


## NOTES:

- THIS FIELD SURVEY CONFORMS TO THE MINIMUM STANDARDS SET BY THE C.O.G.C.C., RULE NO. 215
- HORIZONTAL POSITIONS AND ORTHOMETRIC ELEVATIONS SHOWN AT THE WELL HEAD, ARE BASED ON GPS-RTK POSITIONS DERIVED FROM MINIMUM 2-HOUR STATIC OBSERVATIONS CORRECTED BY THE NATIONAL GEODETIC SURVEY ONLINE POSITIONING USER SERVICE, O.P.U.S.  
DATUM: HORIZONTAL = NAD83/2007, VERTICAL = NAVD88
- THE BASIS OF BEARINGS ARE STATE PLANE COORDINATE SYSTEM GRID BEARINGS SHOWN HEREON BETWEEN THE DESCRIBED THE MONUMENTS SHOWN HEREON.
- GRID DISTANCES ARE SHOWN, AS MEASURED IN THE FIELD, WITH TIES TO WELLS MEASURED PERPENDICULAR TO SECTION LINES.

I, L. KELLEY STEVENSON, A LICENSED PROFESSIONAL LAND SURVEYOR IN THE STATE OF COLORADO DO HEREBY CERTIFY TO KERR-MCGEE OIL & GAS ONSHORE LP, THAT THE SURVEY AND WELL LOCATION CERTIFICATE SHOWN HEREON WERE DONE BY ME OR UNDER MY DIRECT SUPERVISION AND THAT THE DRAWING SHOWN HEREON ACCURATELY DEPICTS THE PROPOSED LOCATION OF THE WELL. THIS CERTIFICATE DOES NOT REPRESENT A LAND SURVEY PLAT OR IMPROVEMENT SURVEY PLAT AS DEFINED BY C.R.S. 38-51-102 AND CANNOT BE RELIED UPON TO DETERMINE OWNERSHIP.

L. KELLEY STEVENSON, PLS 38231  
COLORADO LICENSED PROFESSIONAL LAND SURVEYOR  
FOR AND ON BEHALF OF P.F.S., LLC



NOTICE: ACCORDING TO COLORADO LAW YOU MUST COMMENCE ANY LEGAL ACTION BASED UPON ANY DEFECT IN THIS SURVEY WITHIN THREE YEARS AFTER YOU FIRST DISCOVER SUCH DEFECT. IN NO EVENT MAY ANY ACTION BASED UPON ANY DEFECT IN THIS SURVEY BE COMMENCED MORE THAN TEN YEARS FROM THIS SAID DATE OF THIS CERTIFICATION SHOWN HEREON.

PREPARED BY:



FIELD DATE:

11-21-11

DRAWING DATE:

12-07-11

BY:

SDL

SURFACE LOCATION:

SW 1/4 SE 1/4,

SEC.10, T2N, R65W, 6TH P.M.

WELD COUNTY, COLORADO